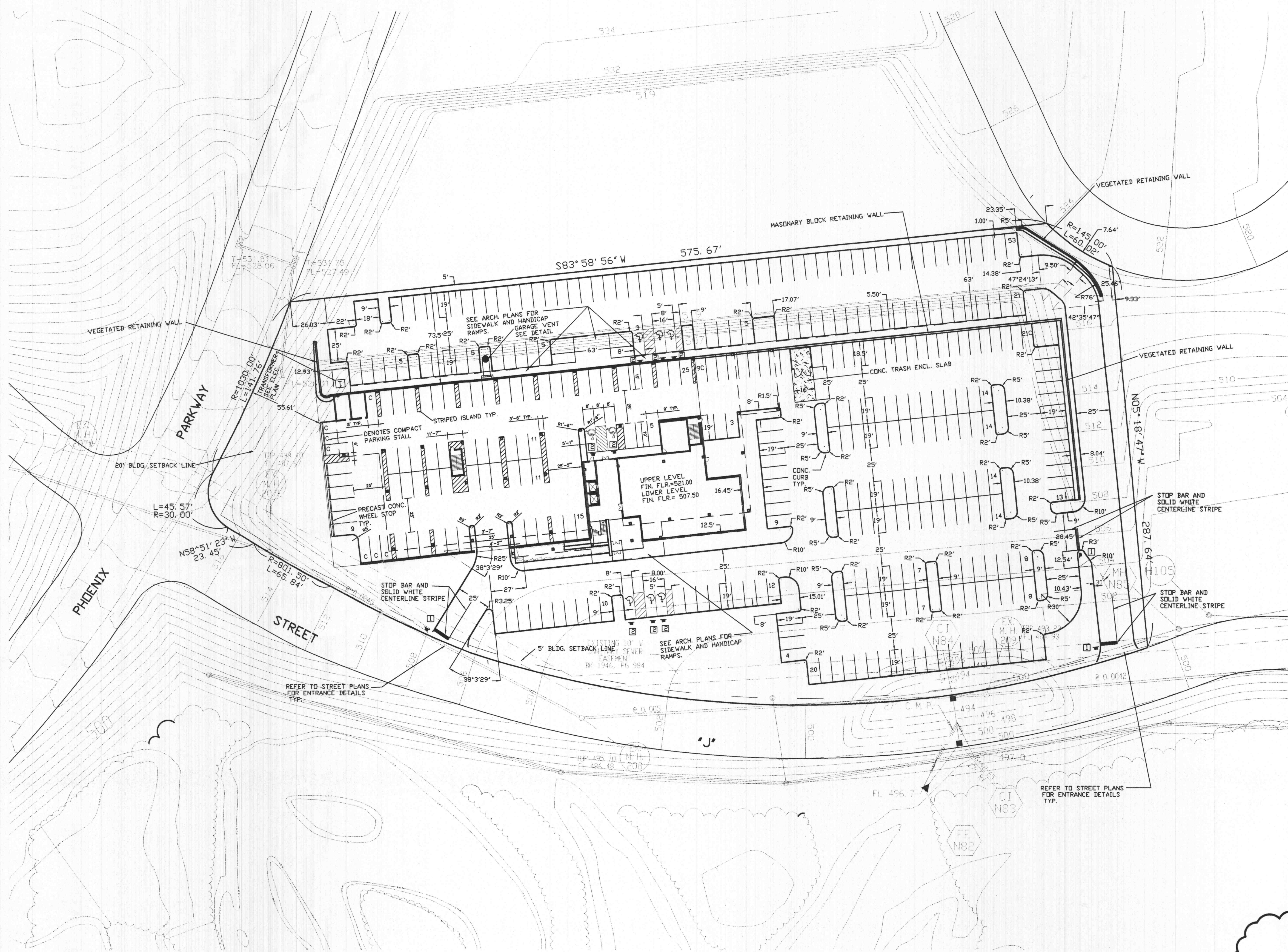




SCALE: 1"=40'



- LEGEND**
- 1 DENOTES STOP SIGN
  - 2 DENOTES HANDICAP SIGN
  - DENOTES CONCRETE PAVEMENT

- GENERAL NOTES:**
1. ALL DIMENSIONS READ TO FACE OF CURB OR TO FACE OF BUILDING.
  2. ALL PAVING AND STRIPING PER CITY OF O'FALLON AND ST. CHARLES COUNTY HIGHWAY DEPT. STANDARDS AND SPECIFICATIONS.
  3. CONTRACTOR SHALL COORDINATE THE LOCATION OF THE HANDICAP RAMPS WITH ARCH. BUILDING PLANS.
  4. SEE ARCHITECTURAL PLANS FOR SIDEWALK WIDTH, SIDEWALK DETAILS AND HANDICAP RAMP DETAILS.
  5. CONTRACTOR SHALL COORDINATE THE CONCRETE TRASH ENCLOSURE AREA WITH THE ARCHITECTS PLANS.
  6. IT SHALL BE THE CONTRACTORS RESPONSIBILITY TO FIELD VERIFY THE EXACT HORIZONTAL AND VERTICAL LOCATIONS AND SIZES OF ALL EXISTING UTILITIES, WHETHER SHOWN OR NOT SHOWN ON THIS PLAN, PRIOR TO THE START OF ANY CONSTRUCTION. TOPOGRAPHICAL INFORMATION SHOWN ON THIS PLAN WERE TAKEN FROM SURVEY INFORMATION AND EXISTING RECORDS AND UTILITY MAPS MADE AVAILABLE TO THE ENGINEER. THEREFORE THE LOCATIONS AND SIZES SHALL BE CONSIDERED APPROXIMATE ONLY. OTHER UTILITIES NOT SHOWN ON THIS DRAWING MAY EXIST ON OR NEAR THE SITE.

**PARKING CALCULATIONS:**  
 REQUIRED:  
 1 SPACE FOR EACH 300 SQUARE FEET OF FLOOR AREA EXCLUSIVE OF BASEMENT OR OTHER INTERIOR SPACE USED FOR MECHANICAL SERVICES AND AREAS WITHIN THE BUILDING USED FOR PARKING CARS.

38,512 SQ. FT. BLDG. AREA / 300 SQ. FT. = 129 PARKING SPACES REQUIRED

PROVIDED:  
 316 REGULAR 9' X 19' SPACES (INCLUDES 8 H.C SPACES)  
 37 COMPACT 8' X 18.5' SPACES  
 353 TOTAL SPACES

Family of Companies

**BOARDWALK CORPORATE CENTER**

O'Fallon, Missouri

Village K

Phase III

**WINGHAVEN®**

Revisions NUMBER	DATE	DESCRIPTION SHEET SIZE CITY REV.
1	2/21/01	

DAVID PAUL WEHMEYER  
 NUMBER E-15763  
 2/21/01

Date Job Number 00-107  
 Drawn By JF  
 Drawing File PAVPLN.DWG  
 Plot Scale 1=1

**C3.0**  
 PAVING PLAN

The Professional, whose signature and personal seal appear hereon, assumes responsibility only for what appears on this page, and disclaims (pursuant to Section 327.411 RSMo) any responsibility for all other plans, specifications, estimates, reports, or other documents or instruments not sealed by the undersigned Professional relating to, or intended to be used for, any part or parts of the project to which this page refers.