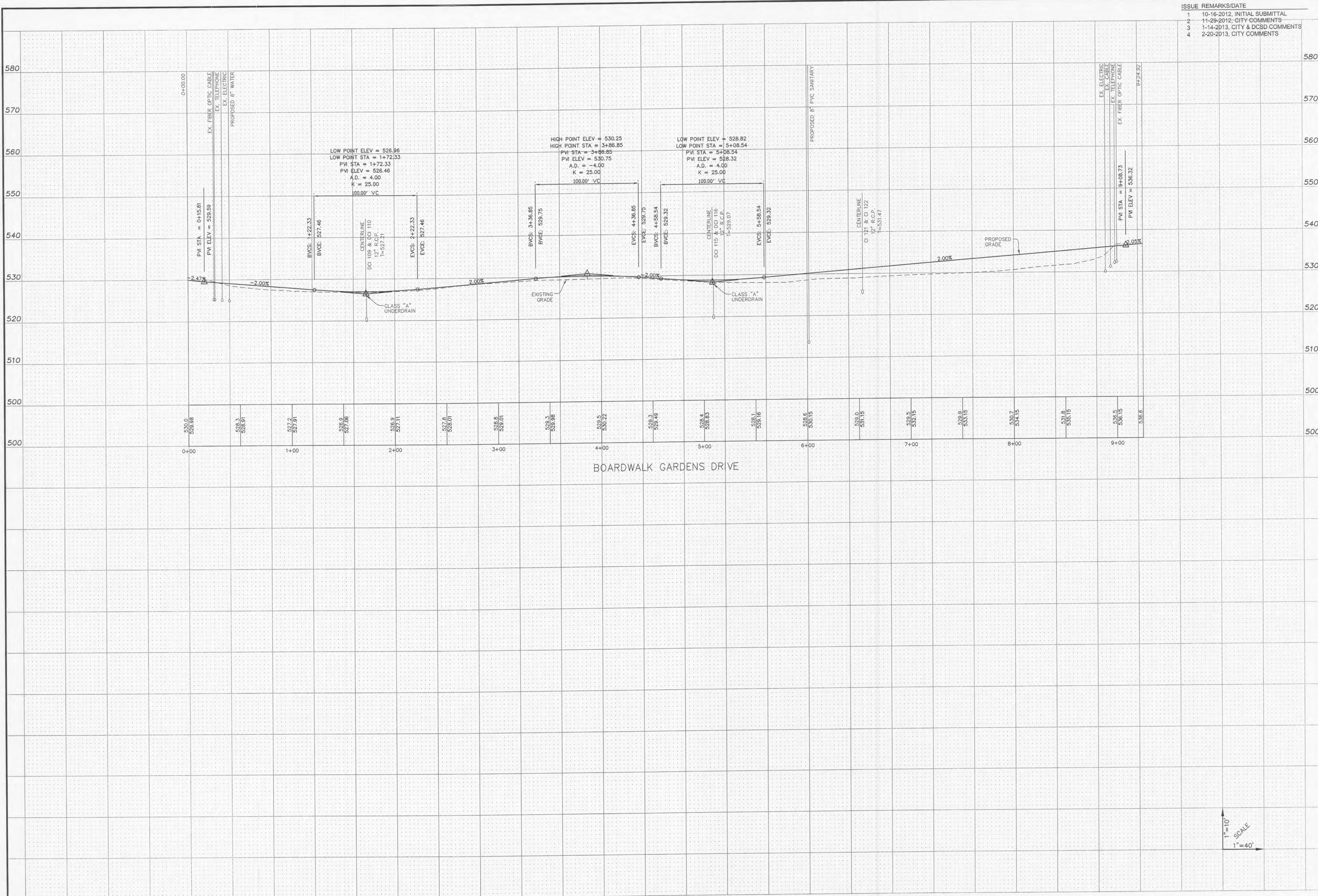


ISSUE	REMARKS/DATE
1	10-16-2012, INITIAL SUBMITTAL
2	11-29-2012, CITY COMMENTS
3	1-14-2013, CITY & DCSD COMMENTS
4	2-20-2013, CITY COMMENTS



PROJECT TITLE

BOARDWALK GARDENS
OFALLON, MISSOURI

THE STERLING CO.
ENGINEERS & SURVEYORS
5055 New Baumgartner Road
St. Louis, Missouri 63129
Ph 314-487-0440 Fax 314-487-8444
www.sterling-eng-sur.com
Corporate Certificate of Authority #001348

The Professional Engineer's seal and signature shall be placed on this sheet only in the material and items shown on this sheet. All drawings, instruments or other documents not exhibiting this seal and signature shall not be considered prepared by the engineer and the engineer expressly disclaims any responsibility for any such drawings or documents not exhibiting this seal and signature.



Date: 2/20/13
MICHAEL G. BOERING
License No. E-28643
Civil Engineer

MCBRIDE RED HAWK, LLC
16001 SWINGLEY RIDGE ROAD, SUITE 300
CHESTERFIELD, MISSOURI 63017
PH: 636-537-2000
Contact: Jeff Boland

STREET PROFILES

P+Z No. 9831.34.09.01
City No.
Date: OCT.16, 2012
Job No. 12-05-128
Page No.

6.1

IMP

1"=10'
SCALE
1"=40'