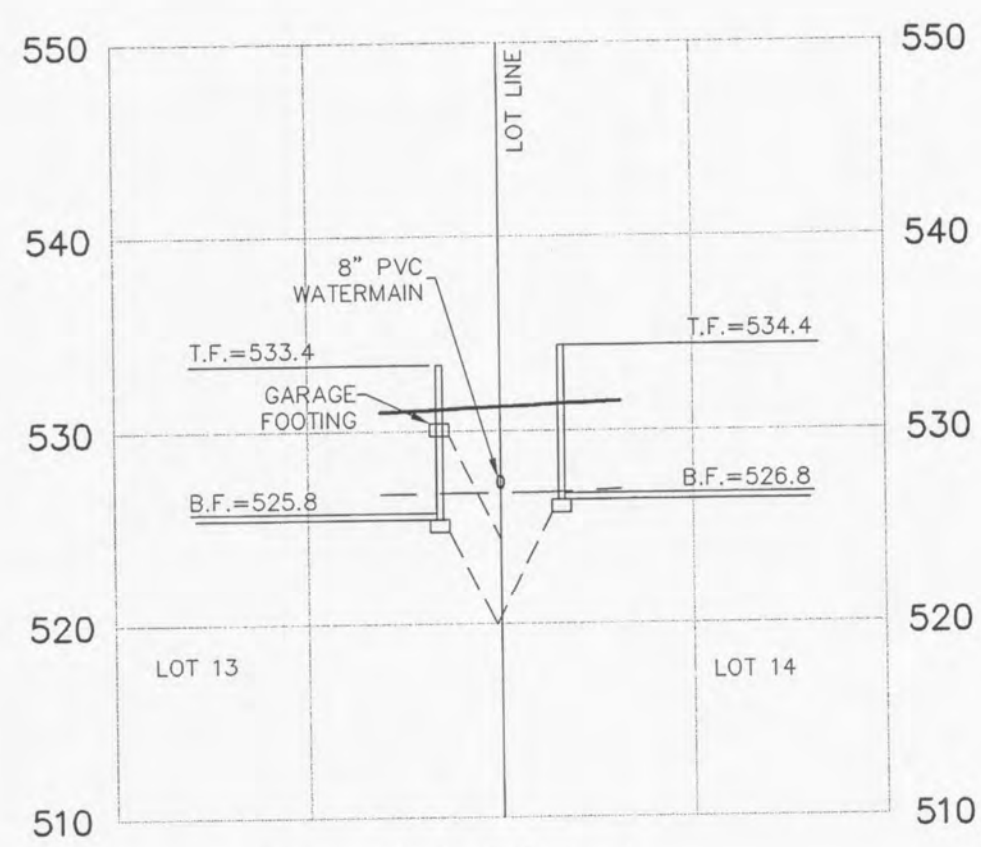
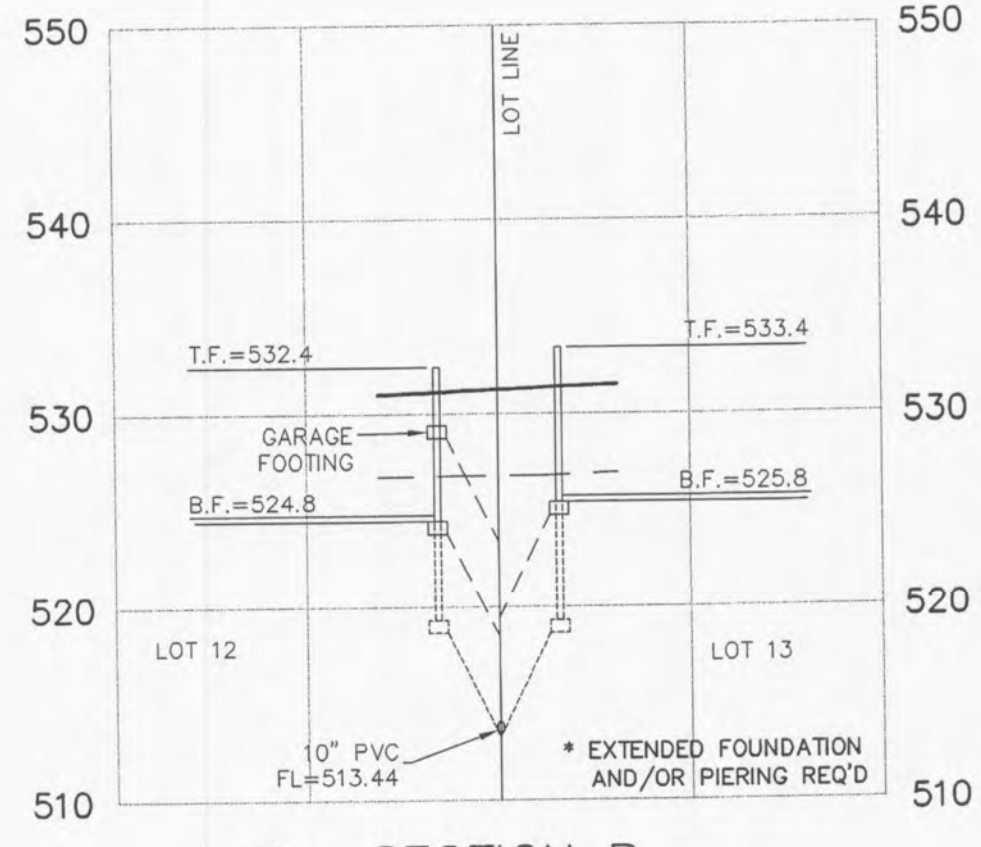


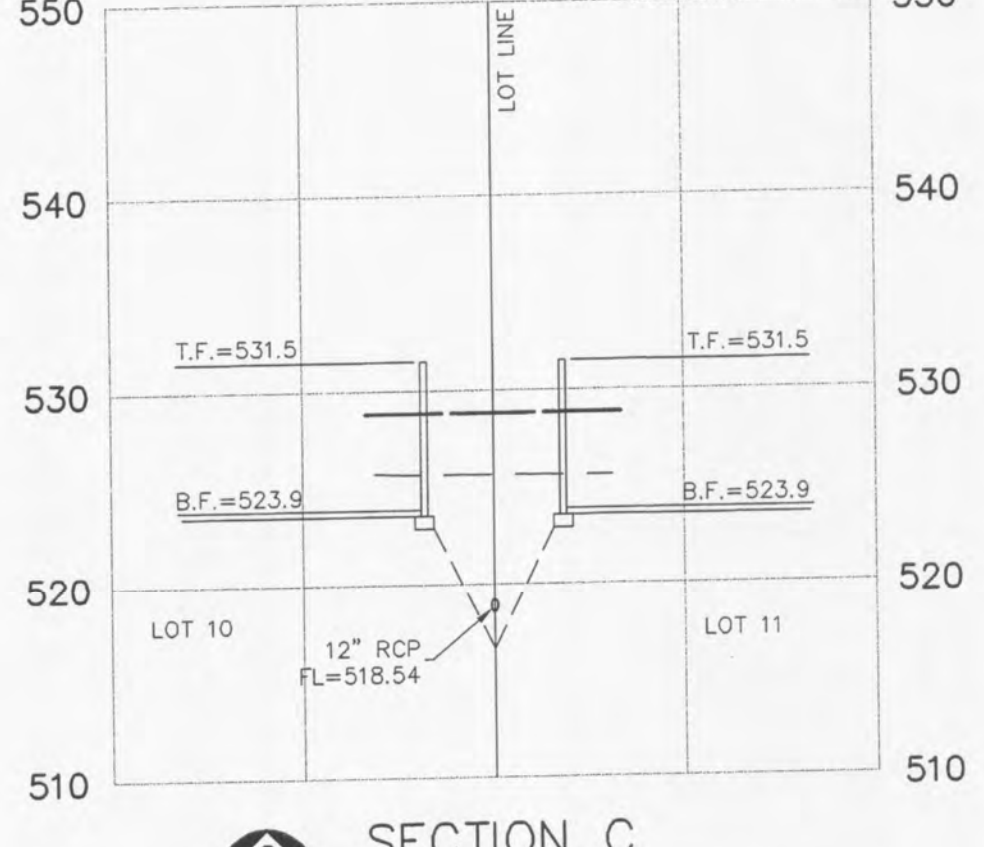
| ISSUE | REMARKS/DATE |
|-------|---------------------------------|
| 1 | 10-16-2012, INITIAL SUBMITTAL |
| 2 | 11-29-2012, CITY COMMENTS |
| 3 | 1-14-2013, CITY & DCSD COMMENTS |
| 4 | 2-20-2013, CITY COMMENTS |



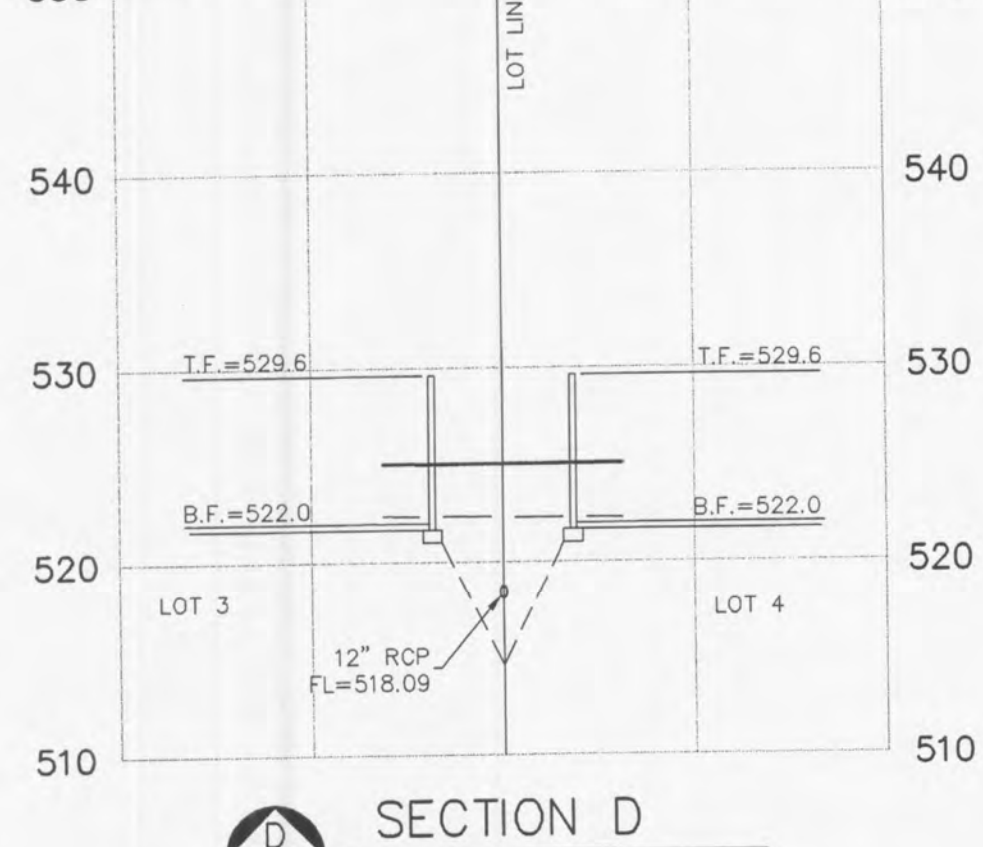
A
14.1
SECTION A
ZONE OF INFLUENCE
AT LOTS 13 & 14



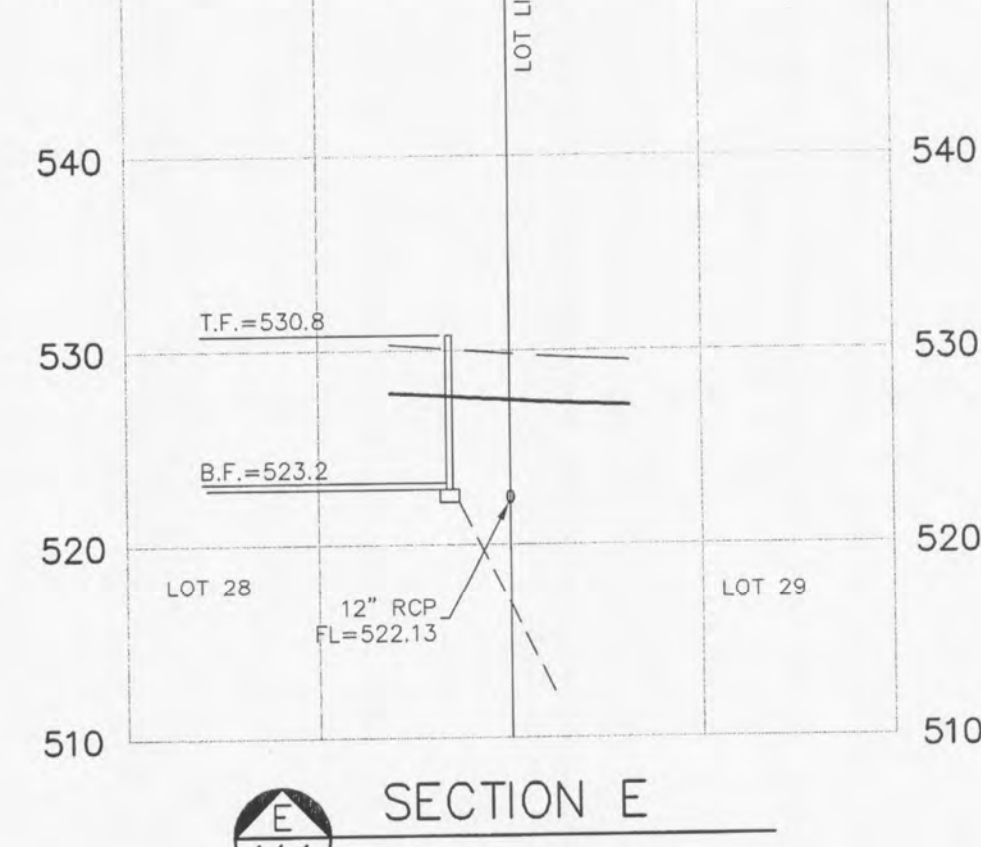
B
14.1
SECTION B
ZONE OF INFLUENCE
AT LOTS 12 & 13



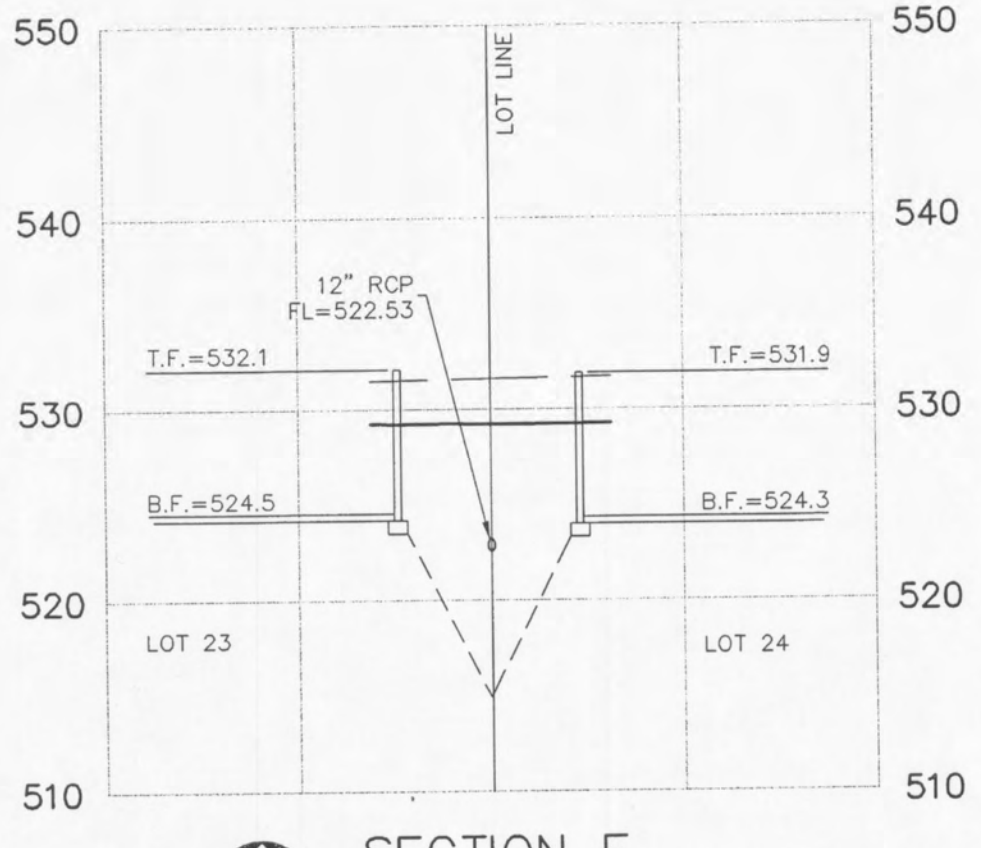
C
14.1
SECTION C
ZONE OF INFLUENCE
AT LOTS 10 & 11



D
14.1
SECTION D
ZONE OF INFLUENCE
AT LOTS 3 & 4



E
14.1
SECTION E
ZONE OF INFLUENCE
AT LOTS 28 & 29



F
14.1
SECTION F
ZONE OF INFLUENCE
AT LOTS 23 & 24

PROJECT TITLE

**BOARDWALK
GARDENS**
OF FALLON, MISSOURI

THE STERLING CO.
ENGINEERS & SURVEYORS
5055 New Baumgartner Road
St. Louis, Missouri 63129
Ph 314-487-0440 Fax 314-487-8944
www.sterling-eng-sur.com
Corporate Certificate of Authority #001346

The Professional Engineer's seal and signature without to this sheet applies only to the material and items shown on this sheet. All drawings, instruments or other documents not exhibiting this seal and signature shall not be construed as approved by this engineer, and the engineer expressly disclaims any and all responsibility for such drawings or documents not exhibiting this seal and signature.



Date: 2/20/2013
MICHAEL G. BOERDING
License No. E-28643
Civil Engineer

MCBRIDE RED HAWK, LLC
16091 SWINGLEY RIDGE ROAD, SUITE 300
CHESTERFIELD, MISSOURI 63017
PH. 636-537-2000
Contact: Jeff Boland

ZONE OF INFLUENCE SECTIONS

P+Z No. 9831.34.09.01
City No.
Date: OCT.16, 2012
Job No. 12-05-128
Page No.

14.1

IMP