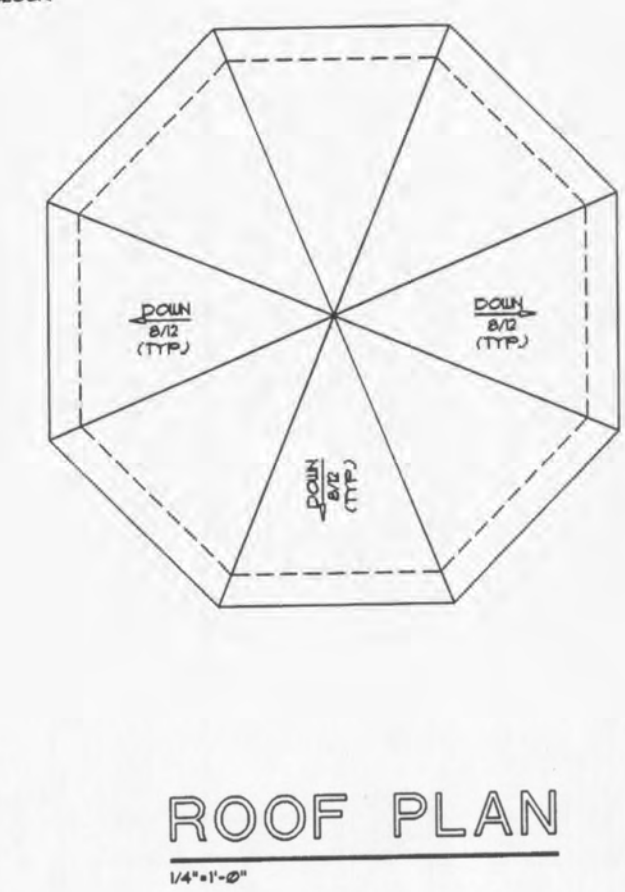
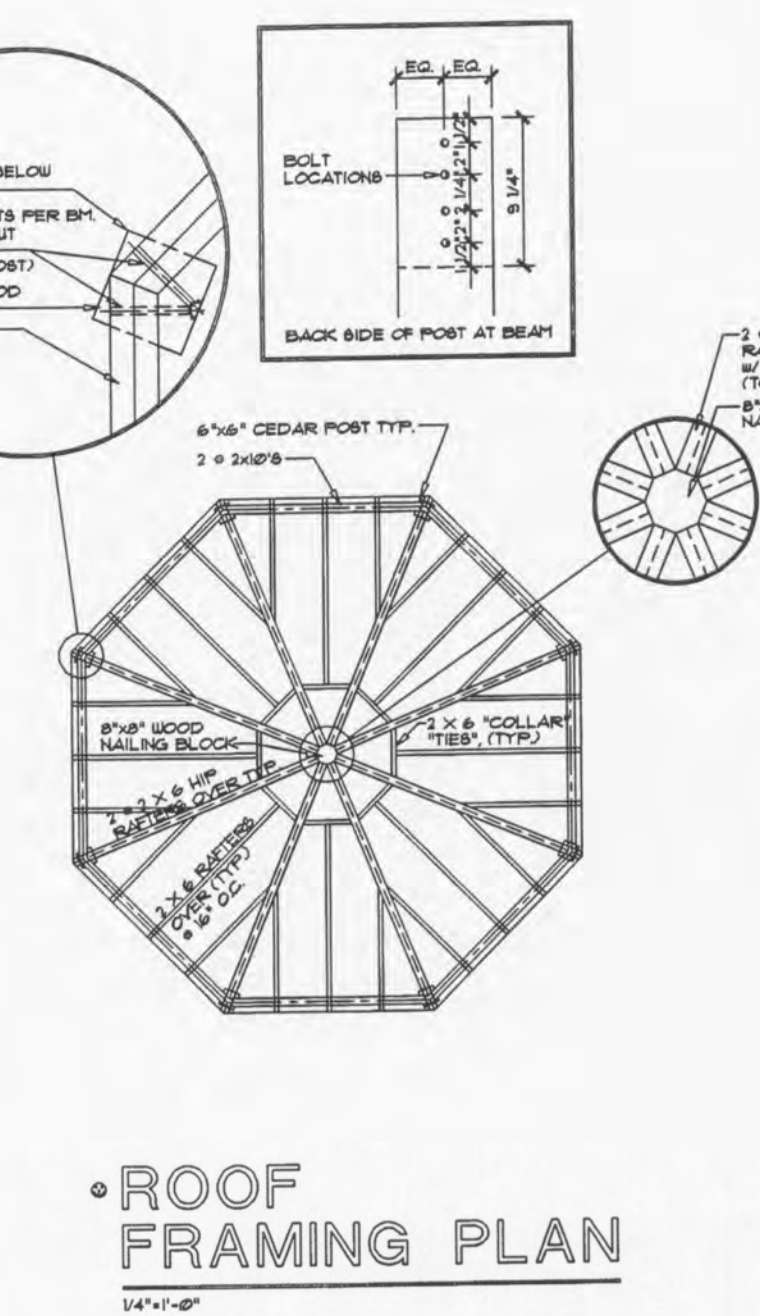
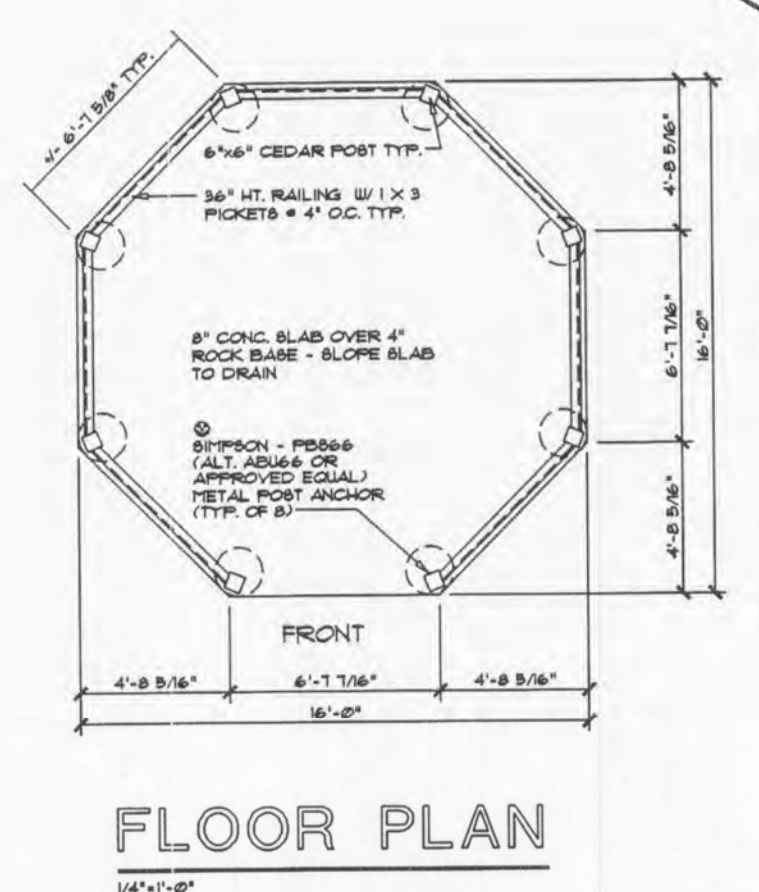
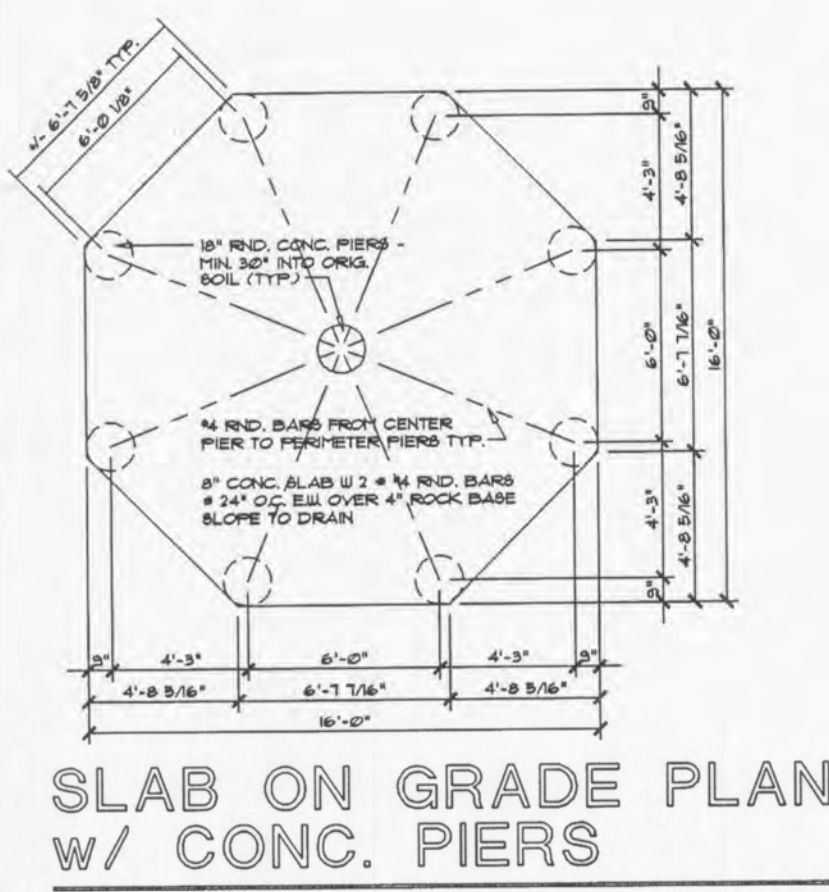
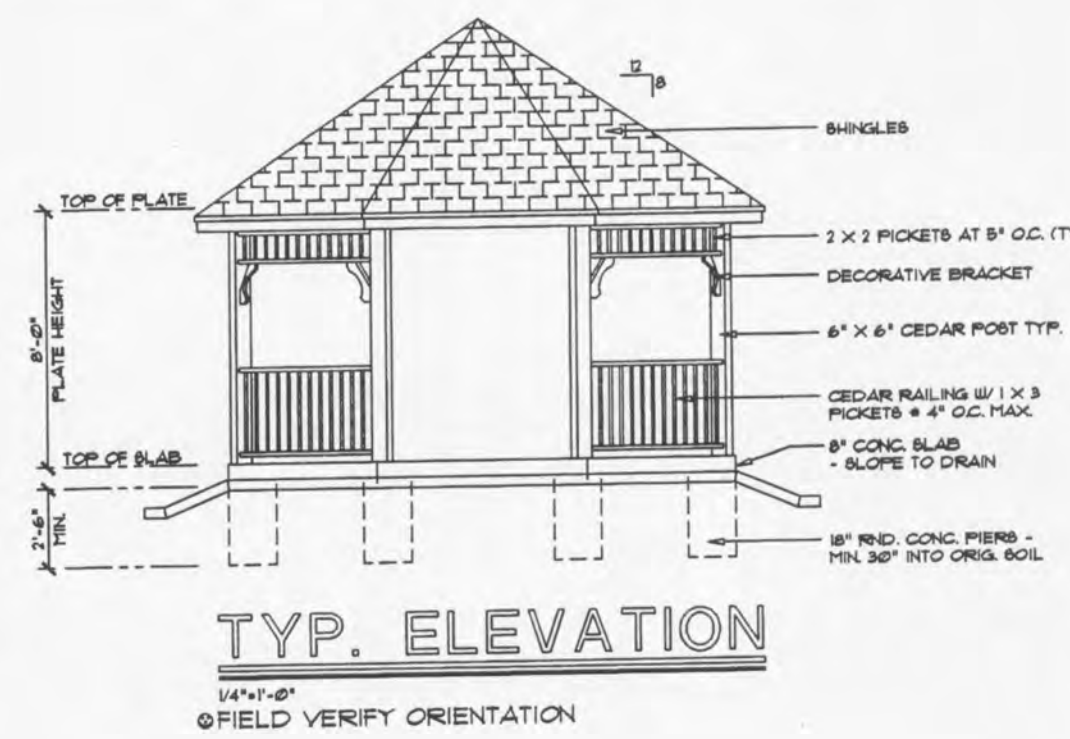
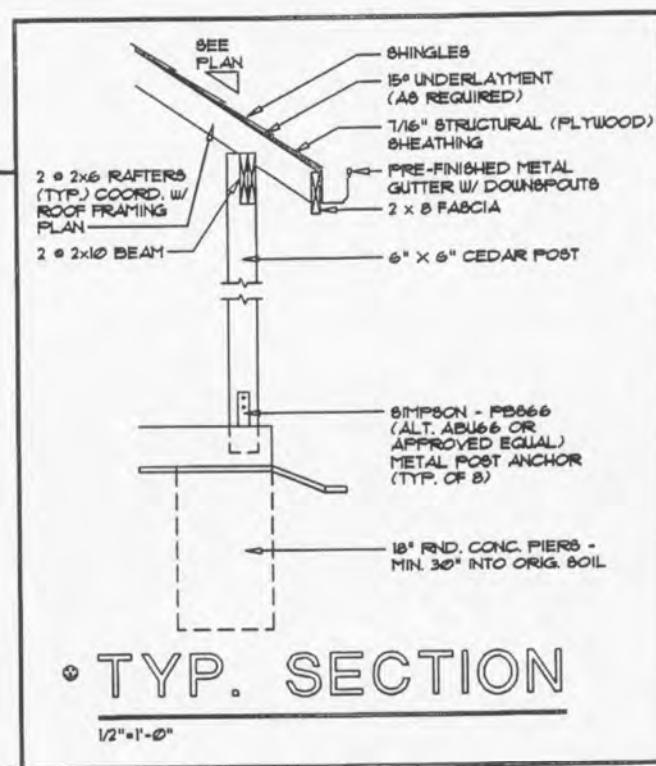


ISSUE	REMARKS/DATE
1	10-16-2012, INITIAL SUBMITTAL
2	11-29-2012, CITY COMMENTS
3	1-14-2013, CITY & DCSD COMMENTS
4	2-20-2013, CITY COMMENTS

**GLANTZ & ASSOCIATES ARCHITECTS**  
 501 NORTH UNDERBUSH BLVD.  
 ST. LOUIS, MO 63141  
 (314) 993-2160 - PHONE  
 (314) 993-2370 - FAX  
 COMPUTER DRAFTING BY:  
 GLANTZ CAD SERVICES, L.P.

BUILDING ELEMENT	NAIL SIZE & TYPE	NUMBER & LOCATION
ROOF SHEATHING	SD COPPON	4" O.C. DIRECT EDGES 4" O.C. INTERMED.
RUFER TO CAP PLATE	SD COPPON	SD COPPON
BULK STAIL SCOT OR RUFER TO TOP PLATE	SD COPPON	3 TOE-NAIL
RUFER TO TOP PLATE	SD COPPON	3 TOE-NAIL
BUILT-UP GIRDERS 4 BAY 2" LIPPER LAYERS	SD COPPON	NAIL EACH LAYER AS FOLLOWS: 3" O.C. + 7" S, 1 STAGGERED. TWO WAYS & END AND WALK OFF PLICE
RR. RETRS TO RIDGE, VALLEY, OR HIP RETRS.	SD COPPON	4 TOE-NAIL
	SD COPPON	3 PAGE NAIL

FASTENING SCHEDULE  
 (TABLE R6@2.3(1))



PROJECT TITLE

**BOARDWALK GARDENS**  
 OTTALON, MISSOURI

**THE STERLING CO.**  
 ENGINEERS & SURVEYORS  
 5055 New Baumgartner Road  
 St. Louis, MO 63112  
 PH: 314.877.4400 FAX: 314.877.8844  
 www.sterling-eng.com  
 Corporate Certificate of Authority #001348

The Professional Engineer's seal and signature shall be on this sheet and shall be in the center of the sheet and shall not be obscured by any other markings and shall not be considered a part of the contract documents unless it is signed and sealed by the engineer, and the engineer's responsibility shall not be limited by this seal and signature.

Date: 2/20/13  
 MICHAEL G. BOERDING  
 License No. E-28643  
 Civil Engineer

**MCBRIDE RED HAWK, LLC**  
 16091 SWINGLEY RIDGE ROAD, SUITE 300  
 CHESTERFIELD, MISSOURI 63017  
 PH: 636-537-2000  
 Contact: Jeff Boland

CONSTRUCTION DETAILS

P+Z No. 9831.34.09.01  
 City No.  
 Date: OCT.16, 2012  
 Job No. 12-05-128  
 Page No.

**Gazebo Construction Note:**  
 A SEPARATE PERMIT SHALL BE REQUIRED PRIOR TO CONSTRUCTION OF THE PROPOSED GAZEBO.

DTL-16  
 IMP