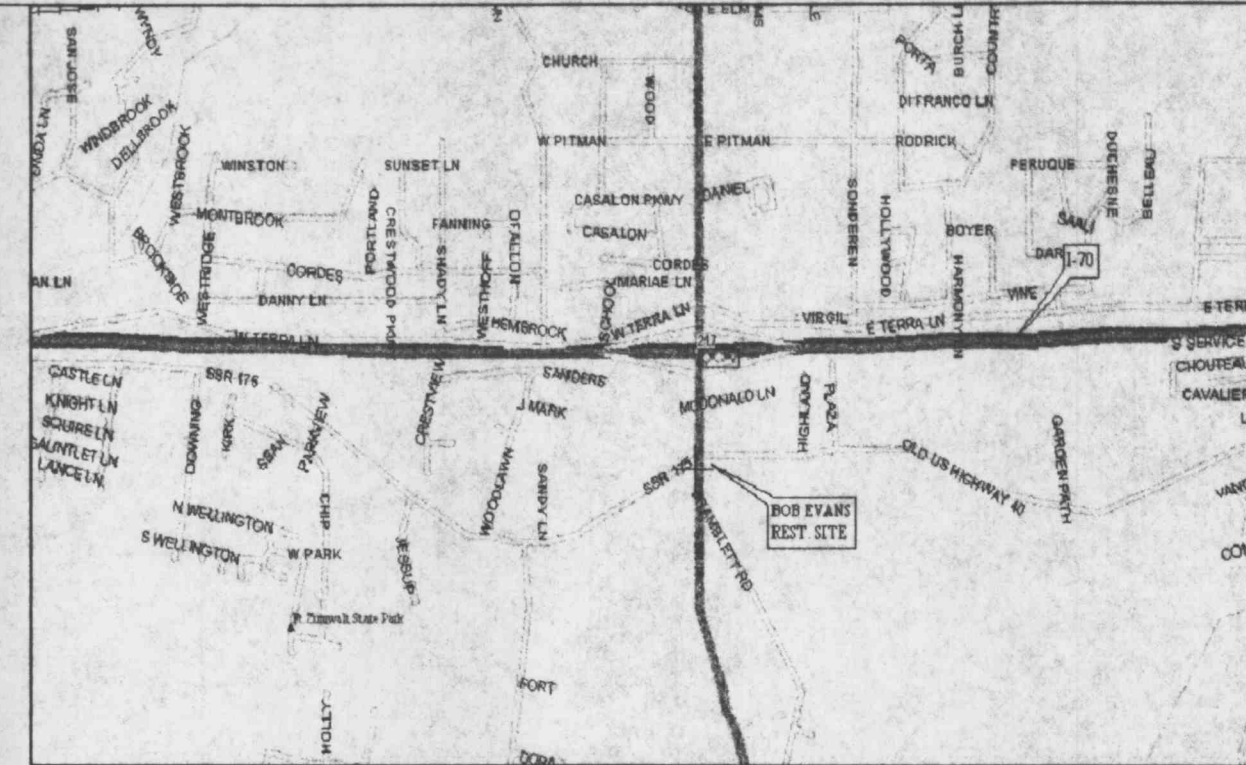


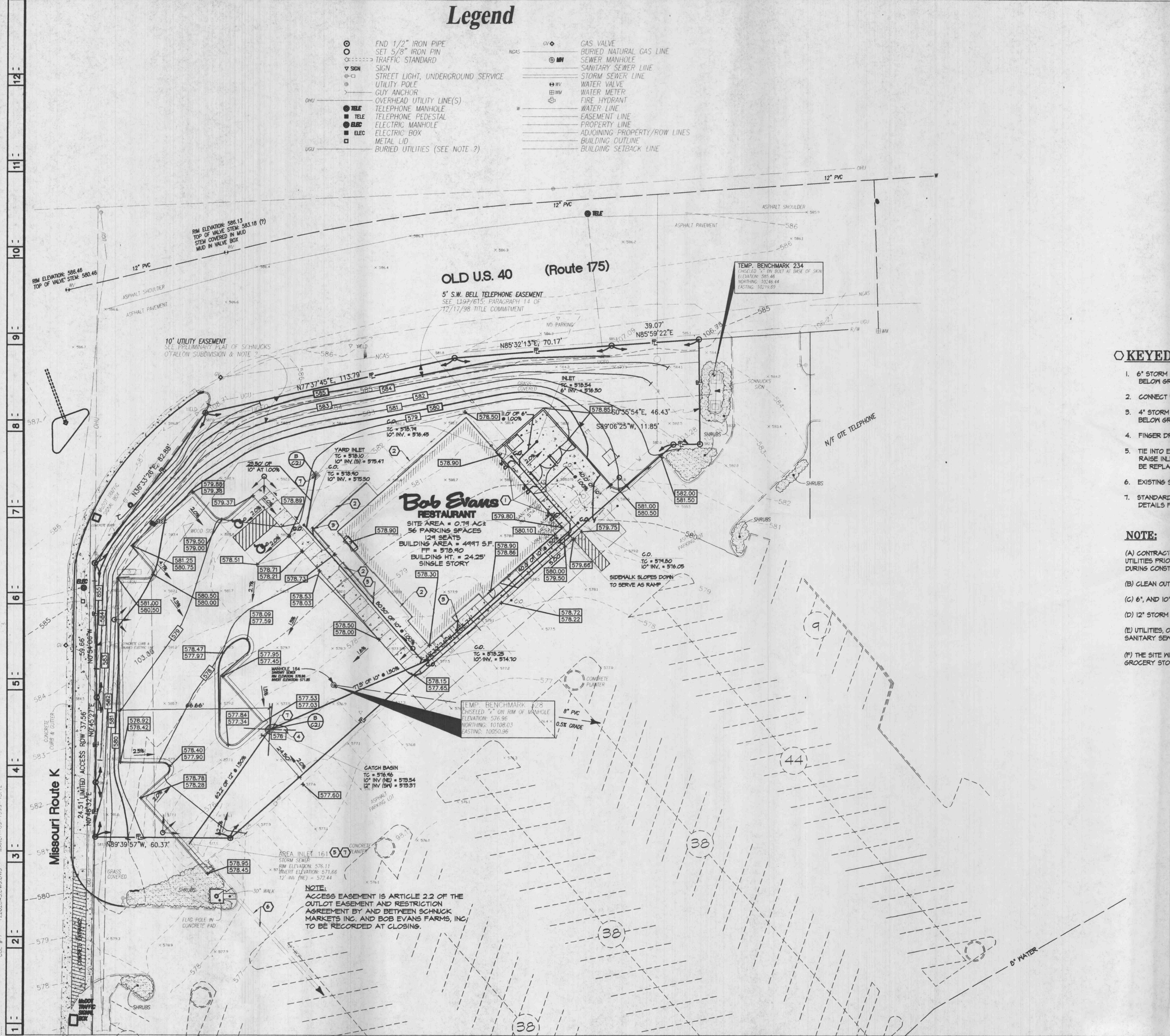
Legend

- | | | | |
|---|-----------------------------------|---|------------------------------|
| ○ | FND 1/2" IRON PIPE | ○ | GAS VALVE |
| ○ | SET 5/8" IRON PIN | ○ | BURIED NATURAL GAS LINE |
| ○ | TRAFFIC STANDARD | ○ | SEWER MANHOLE |
| ▽ | SIGN | ○ | SANITARY SEWER LINE |
| ○ | STREET LIGHT, UNDERGROUND SERVICE | ○ | STORM SEWER LINE |
| ○ | UTILITY POLE | ○ | WATER VALVE |
| ○ | GUY ANCHOR | ○ | FIRE HYDRANT |
| ○ | OVERHEAD UTILITY LINE(S) | ○ | WATER LINE |
| ○ | TELEPHONE MANHOLE | ○ | EASEMENT LINE |
| ○ | TELEPHONE PEDSTAL | ○ | PROPERTY LINE |
| ○ | ELECTRIC MANHOLE | ○ | ADJOINING PROPERTY/ROW LINES |
| ○ | ELECTRIC BOX | ○ | BUILDING OUTLINE |
| ○ | METAL LID | ○ | BUILDING SETBACK LINE |
| ○ | BURIED UTILITIES (SEE NOTE ?) | | |



REVISIONS	DATE	DESCRIPTION
1	2 MARCH 1991	REVISED PROP. MASTER
2		
3		
4		
5		

PRELIMINARY SITE SUBMITTAL
 18 DEC 1998
 FINAL SITE SUBMITTAL
 11 JAN 1999
 HEALTH DEPARTMENT SUBMITTAL
 BLDG. DEPARTMENT SUBMITTAL
 BID DOCUMENTS/CONSTRUCTION



KEYED NOTES

- 6" STORM LINE FROM ROOF SCUPPERS. USE CAST IRON BOOT AND CAST IRON PIPE TO BELOW GRADE. EXTEND TO STORM LINE. 2.0% SLOPE MIN. SEE DETAIL E/G2.1.
- CONNECT PERIMETER DRAIN TO PROPOSED STORM. SEE DETAIL E/G2.1.
- 4" STORM LINE FROM DOWNSPOUTS. USE CAST IRON BOOT AND CAST IRON PIPE TO BELOW GRADE. EXTEND P.V.C. PIPE TO STORM LINE.
- FINGER DRAINS PER DETAIL G/2.1.
- TIE INTO EXISTING AREA INLET STRUCTURE AS PER CITY OF OFALLON STANDARDS. RAISE INLET STRUCTURE TO MATCH PROPOSED GRADE. EXISTING STRUCTURE SHALL BE REPLACED WITH HEAVY DUTY MANHOLE LID ABLE TO HANDLE TRUCK TRAFFIC.
- EXISTING STORM PIPE AND INLET TO REMAIN.
- STANDARD INLET SEDIMENT FILTER AS PER THE SPECIFICATIONS AND STANDARD DETAILS FOR SILT AND EROSION CONTROL. SEE DETAIL ON SHEET G2.3.

NOTE:

- (A) CONTRACTOR IS RESPONSIBLE FOR LOCATING & VERIFYING ALL EXISTING UNDERGROUND UTILITIES PRIOR TO CONSTRUCTION, AND IS RESPONSIBLE FOR ANY DAMAGE TO THEM DURING CONSTRUCTION.
- (B) CLEAN OUT LOCATIONS MARKED C.O. ON PLAN, SEE DETAIL D/G2.1.
- (C) 6", AND 10" STORM CONDUIT IS P.V.C. ASTM D-3034 AND SDR-35.
- (D) 12" STORM CONDUIT IS REINFORCED CONCRETE PIPE ASTM C-76, CLASS II, WALL B.
- (E) UTILITIES, OTHER THAN STORM SEWER, ARE SHOWN HERE FOR REFERENCE ONLY. COORDINATE SANITARY SEWER, GAS LINE, AND WATER LINE WORK WITH SITE UTILITIES PLAN (G3).
- (F) THE SITE WILL DRAIN TO THE EXISTING DETENTION BASIN SOUTH EAST OF THE SCHNUCK'S GROCERY STORE.

Prepared By
ms consultants, inc.
 engineers, architects, planners
 6500 Birch Boulevard, Suite 233, Columbus, Ohio 43229
 (614) 846-0726 FAX: (614) 846-0311

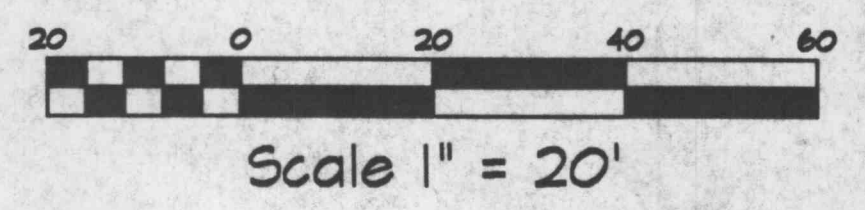
100 E. OLD HWY. 40
 OFALLON, MO

Bob Evans
 RESTAURANT
 SITE GRADING PLAN



PROJECT NUMBER:
12202.306

C2



COL. #17 12202BAS.DWG.DWG. MARCH-09-1999-13.12