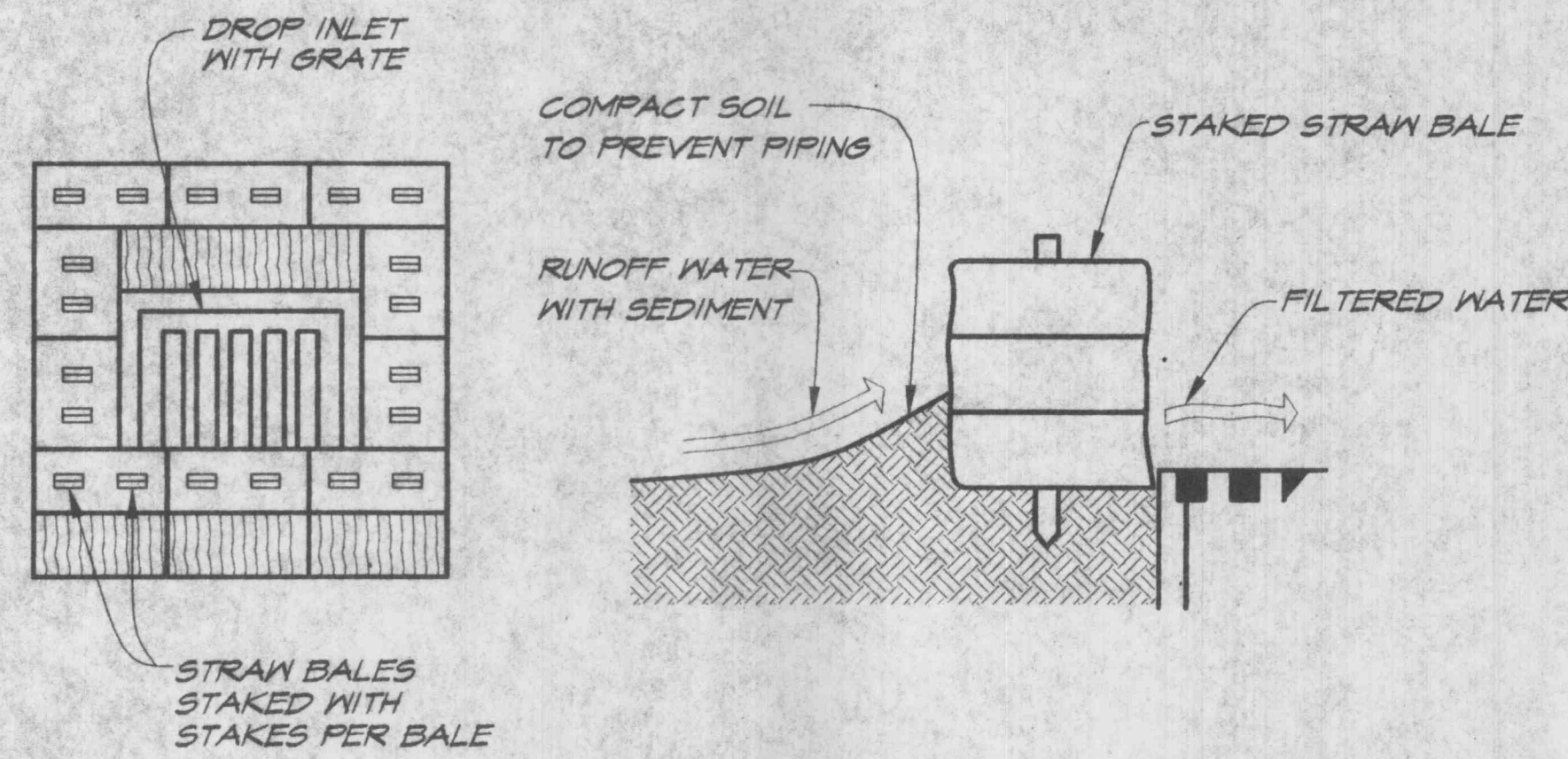


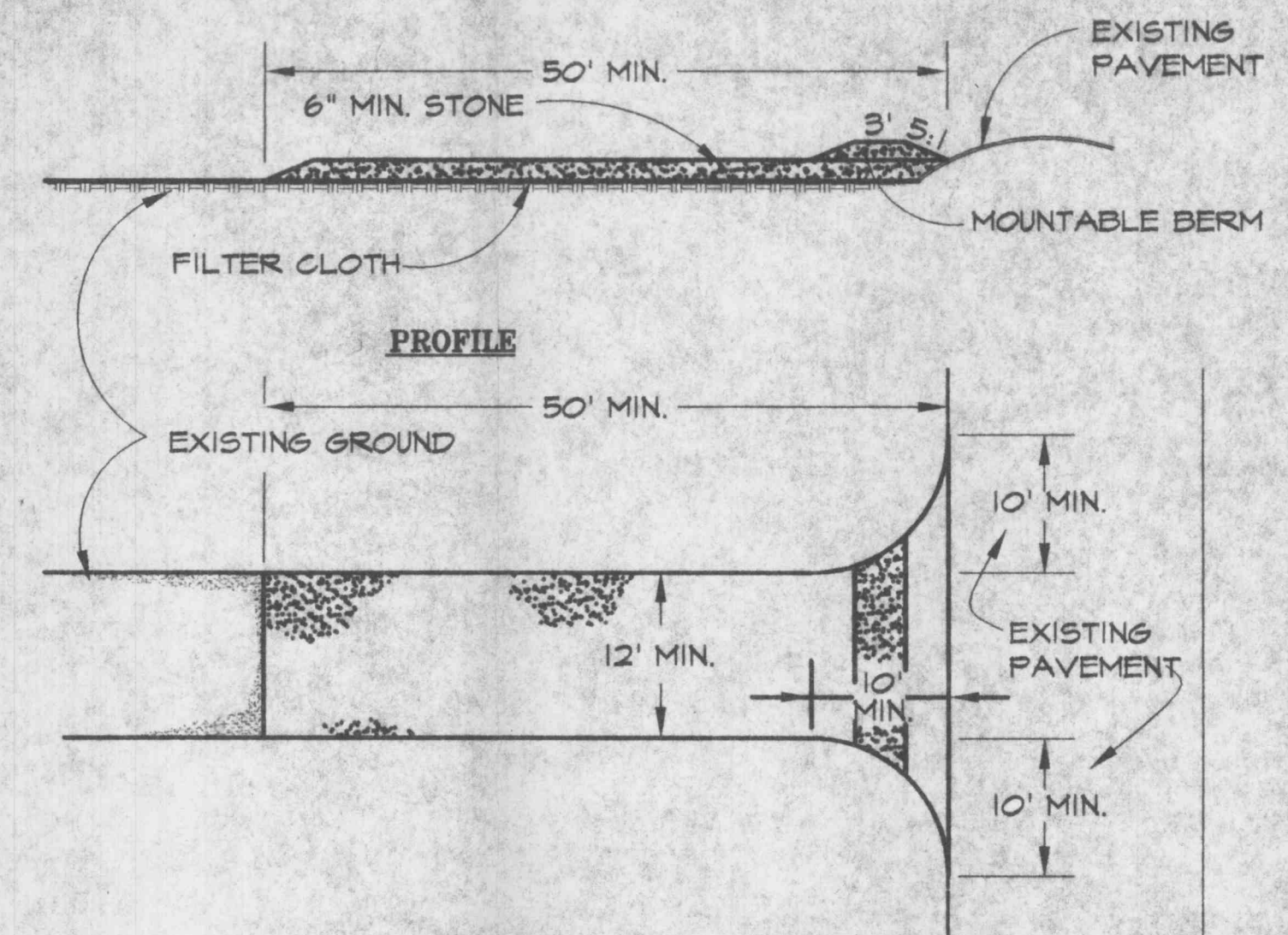
STRAW BALE BARRIER DETAIL

N.T.S.



STRAW BALE DROP INLET SEDIMENT FILTER

N.T.S.

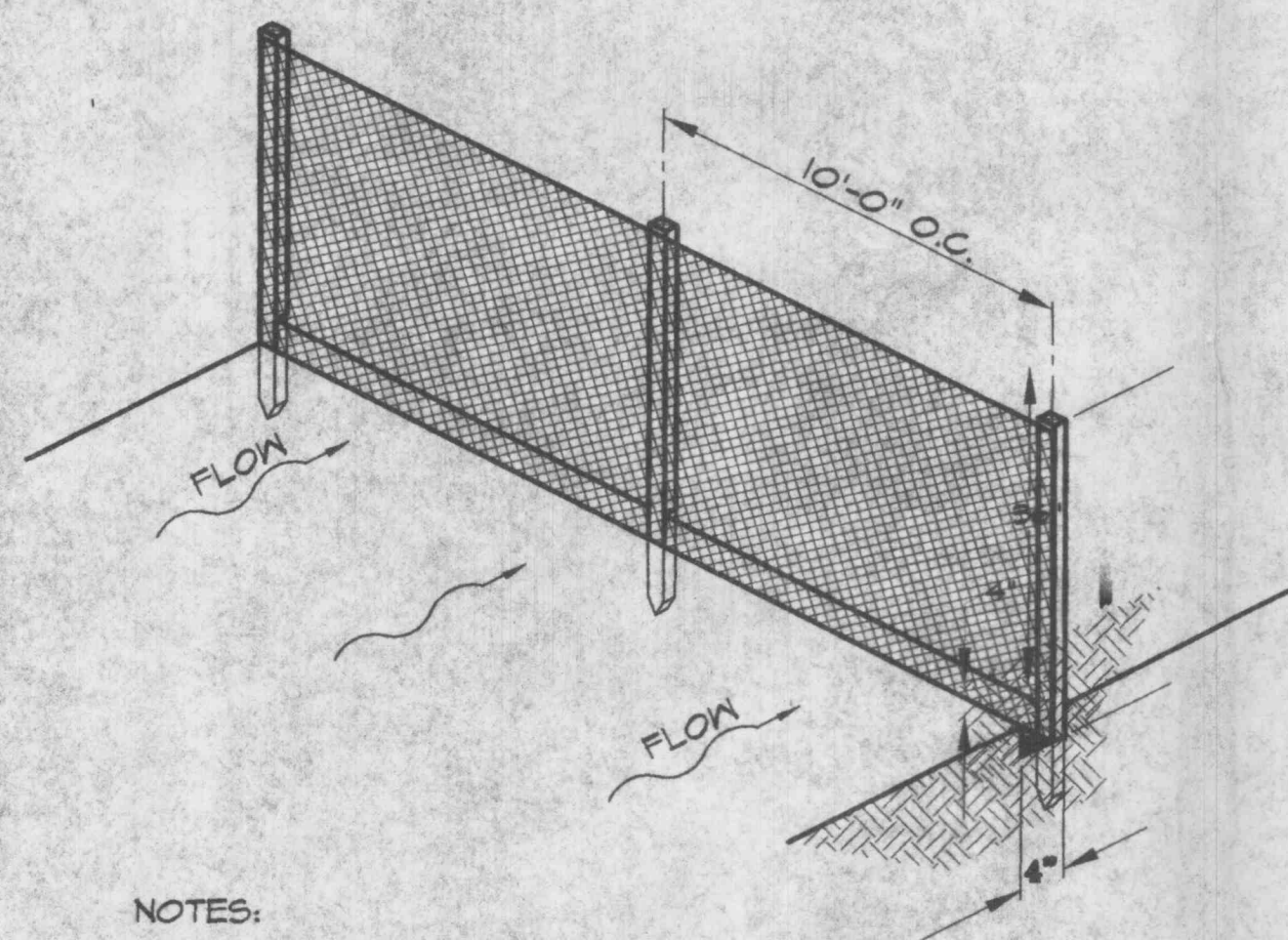


PLAN VIEW

N.T.S.

STABILIZED CONSTRUCTION ENTRANCE

1. STONE SIZE - USE 2" STONE, OR RECLAIMED OR RECYCLED CONCRETE EQUIVALENT.
2. LENGTH - AS REQUIRED, BUT NOT LESS THAN 50 FEET.
3. THICKNESS - NOT LESS THAN SIX (6) INCHES.
4. WIDTH - TEN (10) FOOT MINIMUM, BUT NOT LESS THAN THE FULL WIDTH AT POINTS WHERE INGRESS OR EGRESS OCCURS.
5. FILTER CLOTH - WILL BE PLACED OVER THE ENTIRE AREA PRIOR TO PLACING OF STONE.
6. SURFACE WATER - ALL SURFACE WATER FLOWING OR DIVERTED TOWARD CONSTRUCTION ENTRANCES SHALL BE PIPED ACROSS THE ENTRANCE. IF PIPING IS IMPRACTICAL, A MOUNTABLE BERM WITH 5:1 SLOPES WILL BE PERMITTED.
7. MAINTENANCE - THE ENTRANCE SHALL BE MAINTAINED IN A CONDITION WHICH WILL PREVENT TRACK OR FLOWING OF SEDIMENT ONTO PUBLIC RIGHTS-OF-WAY. THIS MAY REQUIRE PERIODIC TOP DRESSING WITH ADDITIONAL STONE AS CONDITIONS DEMAND AND REPAIR AND/OR CLEANOUT ANY MEASURES USED TO TRAP SEDIMENT. ALL SEDIMENT SPILLED, DROPPED, WASHED OR TRACKED ONTO PUBLIC RIGHTS-OF-WAY MUST BE REMOVED IMMEDIATELY.
8. WASHING - WHEELS SHALL BE CLEANED TO REMOVED SEDIMENT PRIOR TO ENTRANCE ONTO PUBLIC RIGHTS-OF-WAY. WHEN WASHING IS REQUIRED, IT SHALL BE DONE ON AN AREA STABILIZED WITH STONE AND WHICH DRAINS INTO AN APPROVED SEDIMENT TRAPPING DEVICE.
9. PERIODIC INSPECTION AND NEEDED MAINTENANCE SHALL BE PROVIDED AFTER EACH RAIN.

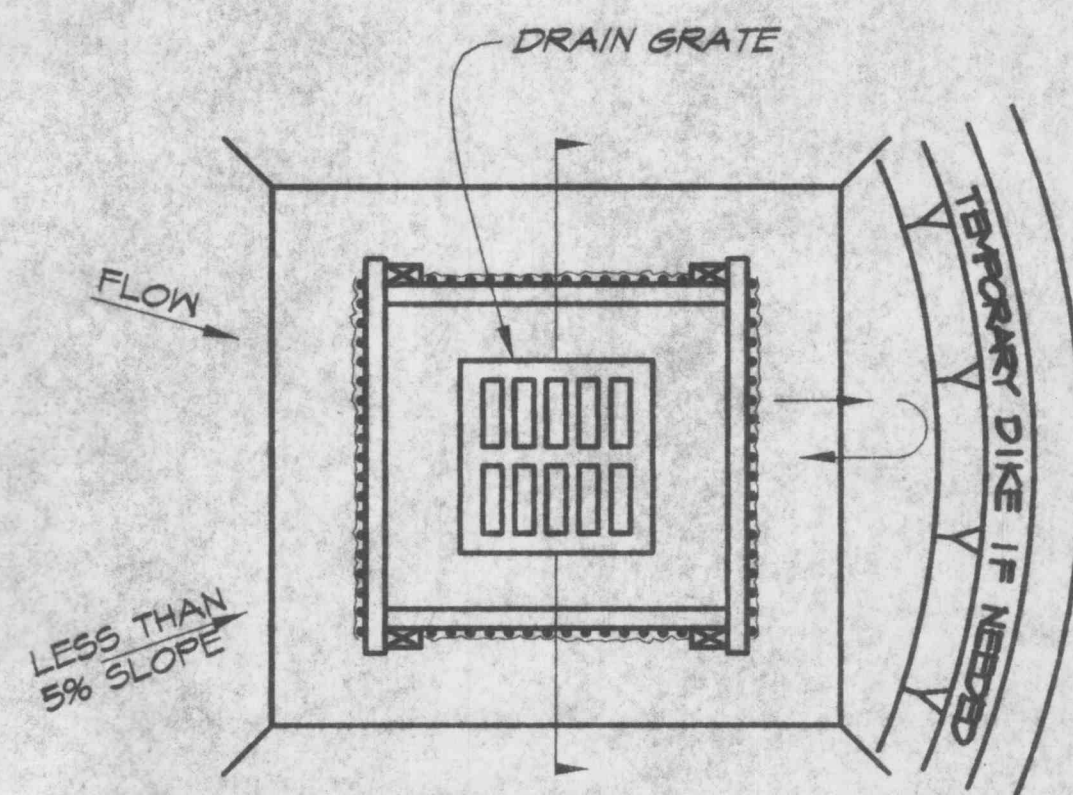


NOTES:

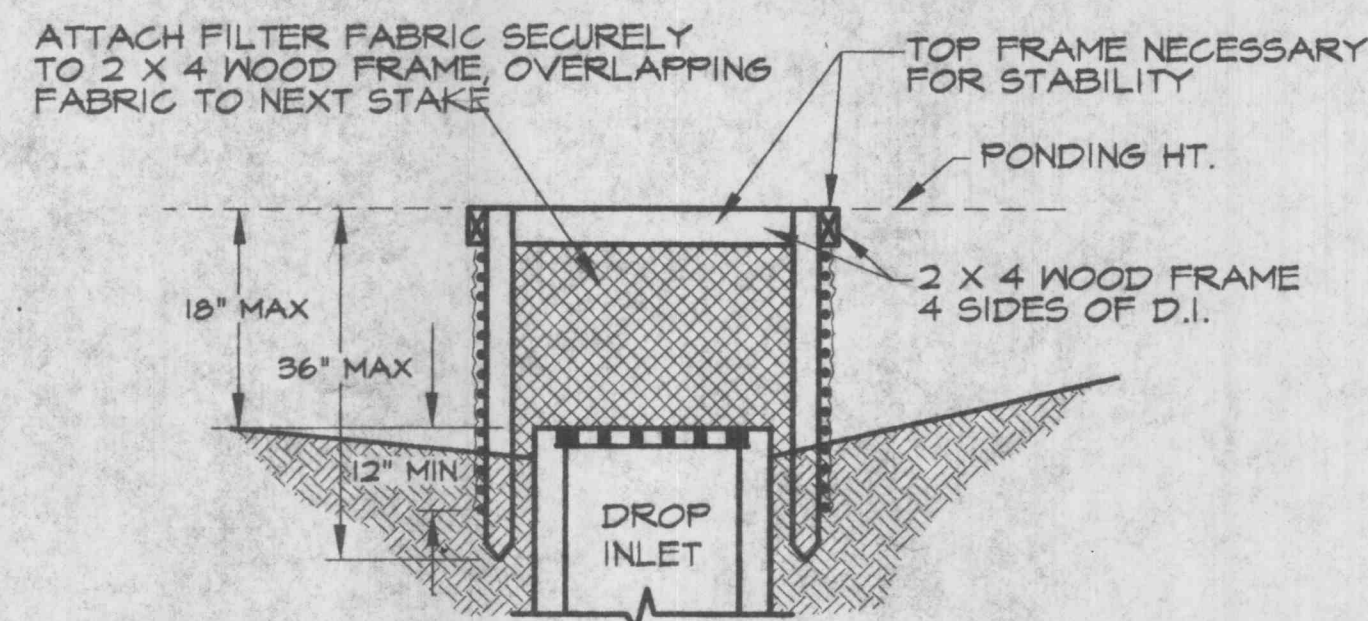
1. WIRE MESH TO BE BENT, LAID FLAT ON BOTTOM OF TRENCH AND BACKFILLED.
2. POSTS TO BE DRIVEN A MIN. OF TWO FEET (2') INTO GROUND.

FILTER FABRIC FENCE DETAIL

N.T.S.



PLAN VIEW



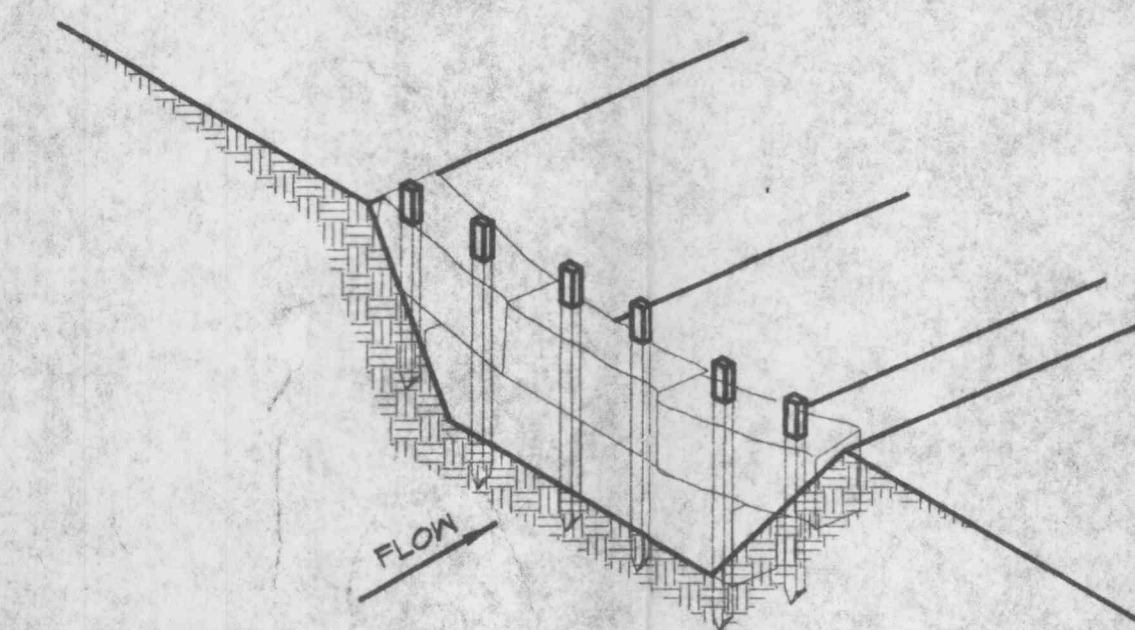
SECTION VIEW

NOTES:

1. DROP INLET SEDIMENT BARRIERS ARE TO BE USED FOR SMALL, NEARLY LEVEL DRAINAGE AREAS. (LESS THAN 5%)
2. USE 2" X 4" WOOD OR EQUIVALENT METAL STAKES, 3' MINIMUM LENGTH.
3. INSTALL 2" X 4" WOOD TOP FRAME TO INSURE STABILITY.
4. THE TOP OF THE FRAME (PONDING HEIGHT) MUST BE WELL BELOW THE GROUND ELEVATION DOWNSLOPE TO PREVENT RUNOFF FROM BYPASSING THE INLET. A TEMPORARY DIKE MAY BE NECESSARY ON THE DOWNSLOPE SIDE OF THE STRUCTURE.

SILT FENCE DROP INLET SEDIMENT BARRIER

N.T.S.



STRAW BALE DITCH BARRIER DETAIL

N.T.S.

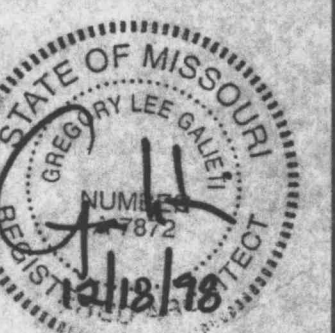
REVISIONS

PRELIMINARY SITE SUBMITTAL 18 DEC 1998
FINAL SITE SUBMITTAL
HEALTH DEPARTMENT SUBMITTAL
BLDG. DEPARTMENT SUBMITTAL
BID DOCUMENTS/CONSTRUCTION - 15 FEB 1999

Prepared By:
ms consultants, inc.
engineers, architects, planners
1000 South Buchanan, Suite 300, Columbia, Mo. 65202
(644) 846-8725 FAX (644) 846-8711

Bob Evans
RESTAURANT
OLD RT. 40 AND MO. HIGHWAY K
OF FALLON, MO

Bob Evans
RESTAURANT
SEDIMENT CONTROL DETAILS & NOTES



PROJECT NUMBER
12202306

C2.3