

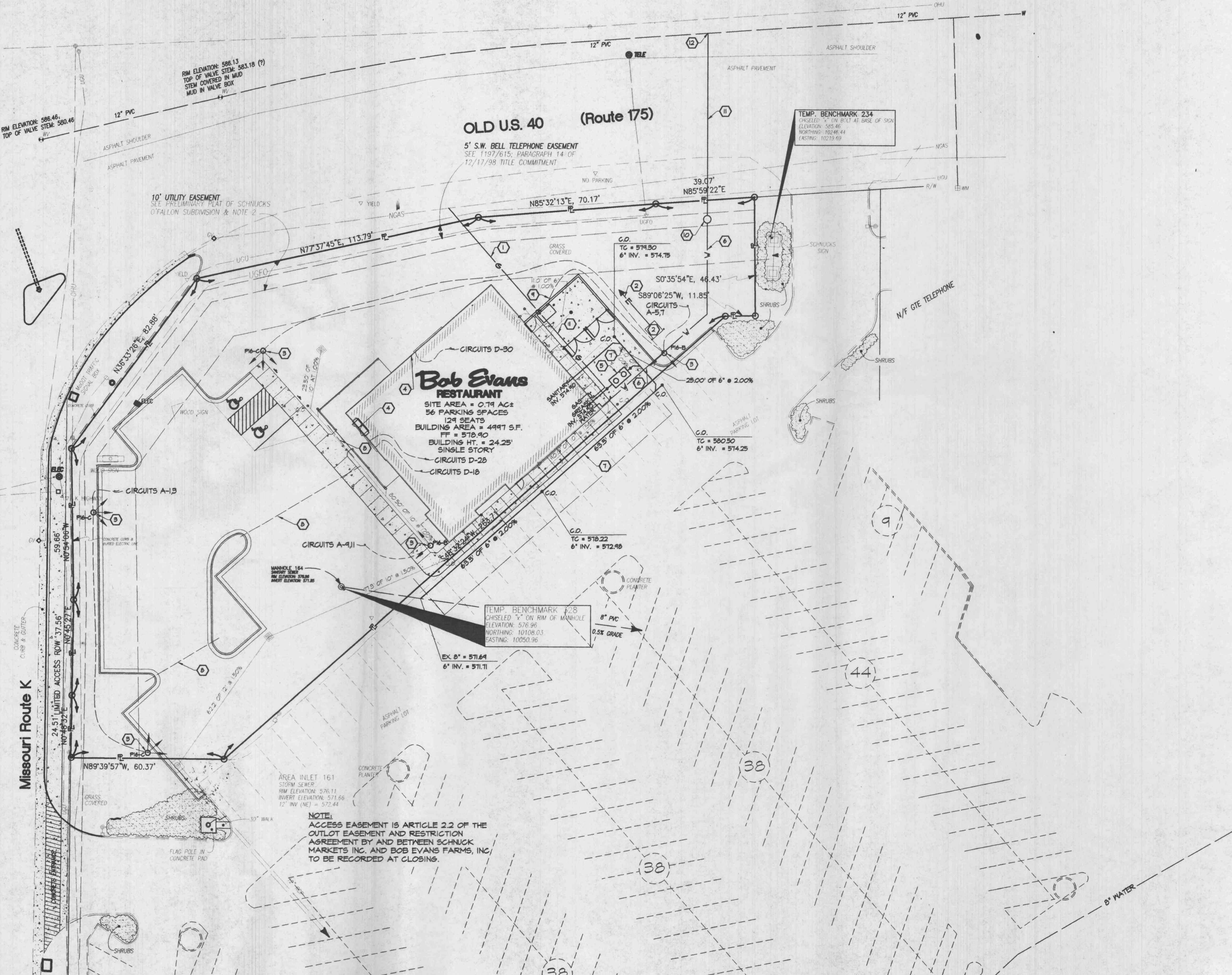
Legend

- | | | | |
|---|-----------------------------------|---|------------------------------|
| ○ | FND 1/2" IRON PIPE | ○ | GAS VALVE |
| ○ | SET 5/8" IRON PIN | ○ | BURIED NATURAL GAS LINE |
| ○ | TRAFFIC STANDARD | ○ | SEWER MANHOLE |
| ▽ | SIGN | ○ | SANITARY SEWER LINE |
| ○ | STREET LIGHT, UNDERGROUND SERVICE | ○ | STORM SEWER LINE |
| ○ | UTILITY POLE | ○ | WATER VALVE |
| ○ | GOY ANCHOR | ○ | WATER METER |
| ○ | OVERHEAD UTILITY LINE(S) | ○ | FIRE HYDRANT |
| ○ | TELEPHONE MANHOLE | ○ | WATER LINE |
| ○ | TELEPHONE PEDESTAL | ○ | EASEMENT LINE |
| ○ | ELECTRIC MANHOLE | ○ | PROPERTY LINE |
| ○ | ELECTRIC BOX | ○ | ADJOINING PROPERTY/ROW LINES |
| ○ | METAL LID | ○ | BUILDING OUTLINE |
| ○ | BURIED UTILITIES (SEE NOTE ?) | ○ | BUILDING SETBACK LINE |



REVISIONS	
NO.	DESCRIPTION
1	2 MARCH 1998 REVISED PROOF MATTER
2	
3	
4	
5	

12
11
10
9
8
7
6
5
4
3
2
1

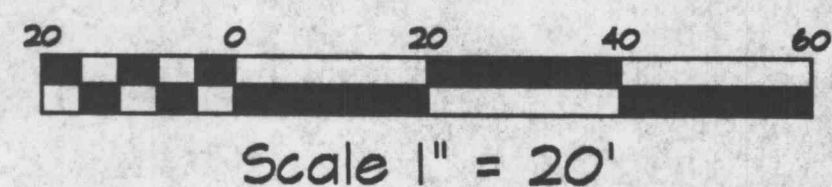


KEYED NOTES

- GAS LINE TO BE SIZED BY GAS COMPANY. RUN LINE FROM METER TO EXISTING GAS MAIN PER RECOMMENDATIONS OF GAS COMPANY. ALL MATERIALS AND INSTALLATION ARE TO BE IN ACCORDANCE WITH ALL STATE AND LOCAL CODES AND N.F.P.A. STANDARDS. INCLUDE TWO GUARD POSTS AT METER LOCATION.
- UNDERGROUND ELECTRICAL SERVICE FROM POWER COMPANY SOURCE. PAD MOUNTED TRANSFORMER AND THE PRIMARY SERVICE CONDUCTORS BY THE POWER COMPANY. CONTRACTOR SHALL PROVIDE THE PRIMARY CONDUITS (QUANTITY, SIZE, TYPE, ETC.) AS REQUIRED FROM THE POWER COMPANY. ELECTRICAL SERVICE SOURCE (EITHER EXISTING OR NEW) TO THE PAD MOUNTED TRANSFORMER. CONTRACTOR SHALL INSTALL GUARD POSTS AND CONCRETE PAD PER ALL STATE AND LOCAL CODES, POWER COMPANY, N.F.P.A., AND N.E.C. STANDARDS. (AS APPLICABLE). CONTRACTOR SHALL COORDINATE WITH THE POWER COMPANY AND VERIFY THE TRANSFORMER LOCATION, PAD SIZE, ORIGIN OF SERVICE, AND ALL STANDARDS FOR WORK. ELECTRICAL CONTRACTOR SHALL PROVIDE SECONDARY SERVICE FEEDERS AS PER THE ELECTRICAL RISER DIAGRAM. SEE SWITCHBOARD ELEVATION AND RISER DIAGRAM ON SHEET E4.
- SITE LIGHT. PROVIDE 1" P.V.C. CONDUIT BACK TO PANEL "A". SEE DETAIL. CIRCUITS AS SHOWN, DO NOT LOOP CIRCUITS.
- BUILDING SIGNS, CIRCUITS AS SHOWN, DO NOT LOOP CIRCUITS.
- INSTALL GREASE INTERCEPTOR PER ALL GOVERNING CODES. SET LID FLUSH WITH GRADE. SEE DETAIL A/P.2.
- 2" COMBINATION SERVICE LINE FOR DOMESTIC WATER, PER ALL GOVERNING CODES. CONTRACTOR MUST VERIFY REQUIREMENTS OF LOCAL CODES, UTILITY COMPANY AND GOVERNING OFFICIALS. INCLUDE IN BASE BID ALL ADDITIONAL VALVES, PIPING, STRUCTURE, ETC., THAT WILL BE REQUIRED. INCLUDE GATE VALVE AND WELL AT MAIN LINE TAP LOCATION. WATER PRESSURE AT BUILDING CAN BE NO LESS THAN 45 P.S.I. IF SO A PUMP (OF OWNER'S CHOICE) MUST BE INSTALLED TO MAINTAIN A MINIMUM PRESSURE OF 40 P.S.I..
- 6" P.V.C. SANITARY SEWER. ASTM D-3034, SCHEDULE 35 OR 40.
- 3" SCHEDULE 40 P.V.C. SLEEVE FOR IRRIGATION LINE. CONTRACTOR TO FLAG ENDS OF SLEEVES.
- RUN 1" CONDUIT FROM NEAREST SITE LIGHT TO THE TRASH ENCLOSURE AND PROVIDE A J-BOX AT THE BACK INSIDE WALL OF THE ENCLOSURE, 24" ABOVE SLAB.
- CONTRACTOR SHALL PROVIDE A 2" METER PIT, 36"x36" RING AND TOUCH READ LID, WITH 2" METER SETTER AND BYPASS AND A 2" TOUCH READ METER. ALL WORK SHALL BE COMPLETED PER CITY ORDINANCE AND INSPECTED BY THE CITY.
- CONTRACTOR SHALL BORE UNDER OLD U.S. 40, AVOIDING ALL EXISTING TELEPHONE LINES AND OTHER UTILITIES. PROVIDE A 3" WELL CASING OR STEEL LINER WITH 2" CLASS 200 PVC AND SDR-21 TRACER WIRE FROM CORPORATION STOP TO METER PIT. ALL WORK SHALL BE COMPLETED PER CITY ORDINANCE AND INSPECTED BY THE CITY.
- CONTRACTOR SHALL PROVIDE 12"x2" SADDLE (MUELLER) FOR P.V.C. CORPORATION STOP AND VALVE FOR CORPORATION STOP, PER CITY ORDINANCE AND INSPECTED BY THE CITY.

NOTES:

- ALL EXISTING UTILITIES, AS TAKEN FROM SURVEY BY ELGIN SURVEYING & ENGINEERING, INC. AND PART FROM RECORDS OF RESPECTIVE UTILITY COMPANIES AND DO NOT NECESSARILY REPRESENT ALL UNDERGROUND UTILITIES ADJACENT TO OR UPON PREMISES SHOWN ON PLAN.
- CONTRACTOR RESPONSIBLE FOR MAINTAINING A MIN. COVER OF 4.0' GRADE OVER PROPOSED WATER LINE.
- CONTRACTOR IS RESPONSIBLE FOR LOCATING & VERIFYING ALL EXISTING UNDERGROUND UTILITIES PRIOR TO CONSTRUCTION, AND IS RESPONSIBLE FOR ANY DAMAGE TO THEM DURING CONSTRUCTION.
- SANITARY SERVICE TIE IN AS PER PLAN, TO BE FIELD VERIFIED BY CONTRACTOR.
- CLEAN OUT LOCATIONS MARKED C.O. ON PLAN, SEE DETAIL D/G.2.1.
- STORM SEWER SHOWN HERE FOR REFERENCE ONLY COORDINATE WITH SITE GRADING PLAN (G.2).



ms consultants, inc.
engineers, architects, planners
6000 Bush Boulevard, Suite 233, Columbus, Ohio 43229
(614) 848-6726 FAX: (614) 848-6311

100 E. OLD HWY. 40
OFALLON, MO

Bob Evans
RESTAURANT
SITE UTILITIES PLAN



PROJECT NUMBER:
12202306

C3

C:\12202306\DWG\MARCH-09-1999-13.15