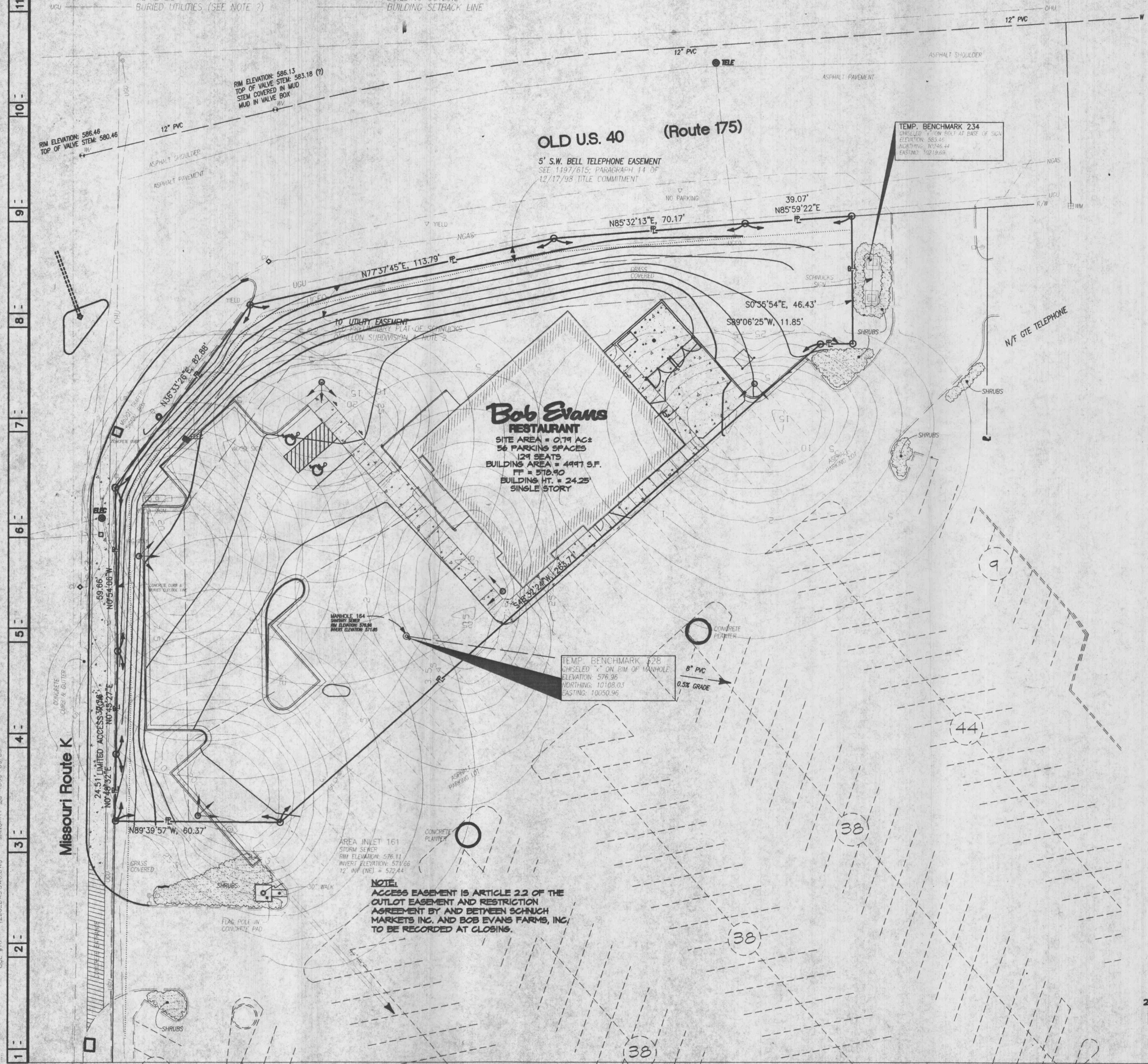


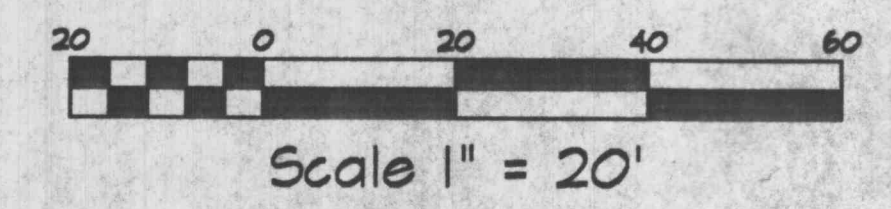
Legend

- FND 1/2" IRON PIPE
- SET 5/8" IRON PIN
- TRAFFIC STANDARD
- ▽ SIGN
- STREET LIGHT, UNDERGROUND SERVICE
- UTILITY POLE
- CUY ANCHOR
- OVERHEAD UTILITY LINE(S)
- TELE TELEPHONE MANHOLE
- TELE TELEPHONE PEDESTAL
- ELEC ELECTRIC MANHOLE
- ELEC ELECTRIC BOX
- METAL LID
- BURIED UTILITIES (SEE NOTE ?)

- GAS VALVE
- BURIED NATURAL GAS LINE
- SEWER MANHOLE
- SANITARY SEWER LINE
- STORM SEWER LINE
- WATER VALVE
- WATER METER
- FIRE HYDRANT
- WATER LINE
- EASEMENT LINE
- PROPERTY LINE
- ADJOINING PROPERTY/ROW LINES
- BUILDING OUTLINE
- BUILDING SETBACK LINE



NOTE:
ACCESS EASEMENT IS ARTICLE 2.2 OF THE
OUTLOT EASEMENT AND RESTRICTION
AGREEMENT BY AND BETWEEN SCHNICH
MARKETS INC. AND BOB EVANS FARMS, INC.
TO BE RECORDED AT CLOSING.

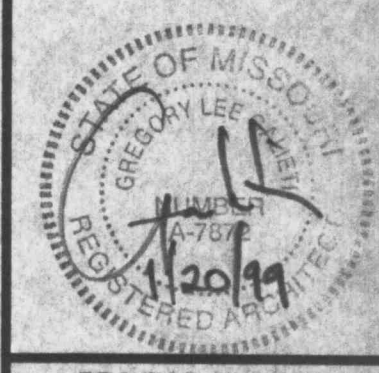


REVISIONS	DATE	BY	DESCRIPTION
1	12 DEC 1998		PRELIMINARY SITE SUBMITTAL
2	11 JAN 1999		FINAL SITE SUBMITTAL
3			HEALTH DEPARTMENT SUBMITTAL
4			BLDG. DEPARTMENT SUBMITTAL
5			END DOCUMENTS/CONSTRUCTION

Prepared By:
ms consultants, inc.
engineers, architects, planners
6500 Bush Boulevard, Suite 233, Columbus, Ohio 43229
(614) 848-6726 FAX: (614) 848-4311

OLD U.S. 40 + MO. ROUTE K
OF FALLON, MO

Bob Evans
RESTAURANT
SITE LIGHTING PLAN



PROJECT NUMBER:
12202.306

C4

12202.306.DWG
 JANUARY 20, 1999 - 09:25