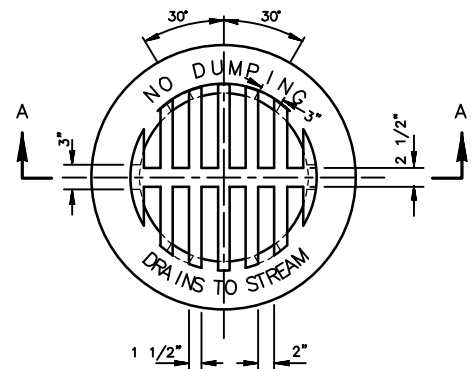
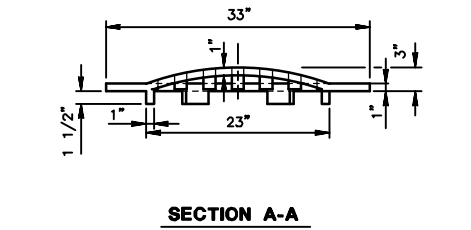
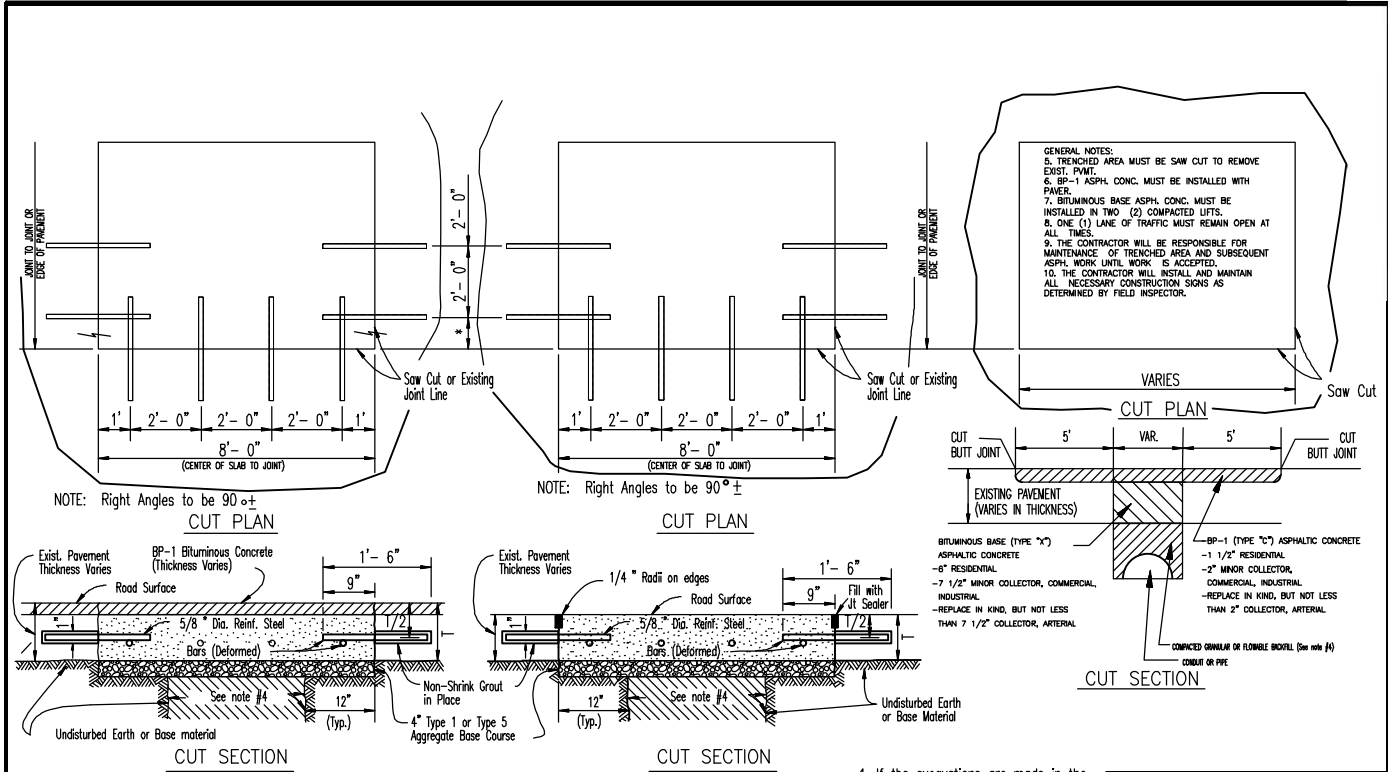


48" PRECAST INLET DETAIL



CAST GRATE
NEENAH R-4340-B

BEEHIVE STORM SEWER GRATE



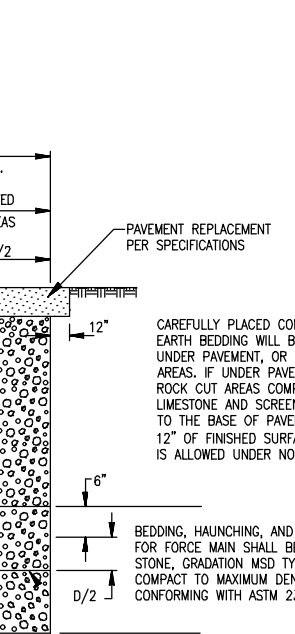
GENERAL NOTES

- If a permit is issued to replace the existing asphaltic concrete pavement with full depth bituminous concrete pavement and concrete pavement is found under the existing asphaltic concrete pavement, the applicant will be required to follow the Detail for Bituminous Concrete over Concrete Pavement Cut. The applicant will use Duracrete or equivalent to replace the existing concrete and use 4" Type 1 or Type 5 Aggregate over Granular Backfill or Pugmill as a subbase. Duracrete sets up in approximately 4 hours at which time the BP-1 Bituminous Concrete Overlay can be applied to the base course.
- If Bituminous Concrete over Concrete Pavement or Concrete Pavement is broken before sawcutting the pavement full concrete slab replacement will be required.
- Minimum Thickness for Pavement Replacement is:

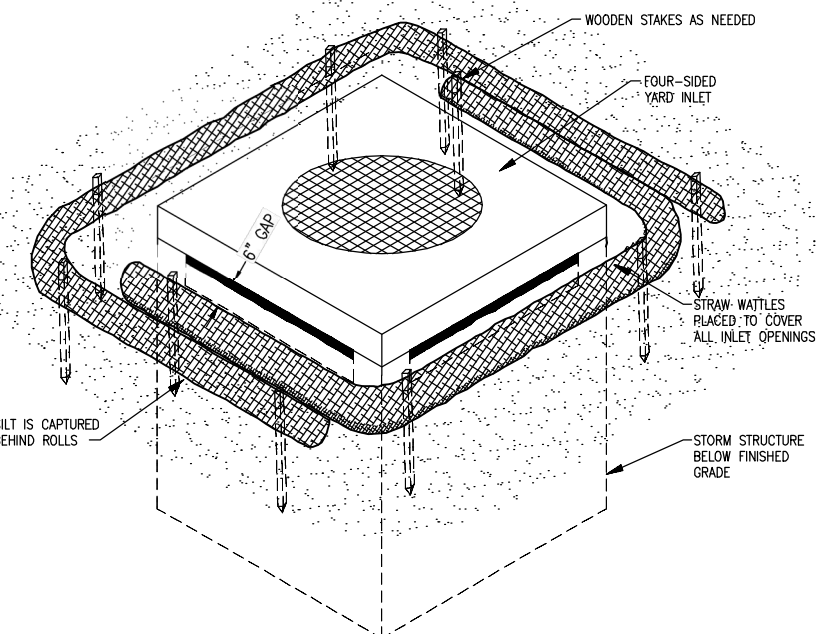
CONCRETE (1)	BITUMINOUS (1)
All Residential Minor and Local Streets Residential Collector, All County and Non-Residential Streets All Arterial Streets	6" 7 1/2"
Pavement replacement will require 4" Type 1 or Type 5 Aggregate Base Course, Granular Backfill and Base will be compacted by mechanical tamping methods in lifts no greater than 6 inches.	7" 9 1/2"
- If the excavations are made in the improved portion of the ROW, twelve inches of granular backfill will be placed over exposed facilities and controlled low strength material (CLSM) also flowable fill will fill the hole within eight inches of the finished surface for concrete pavement. There will be a plastic membrane placed between the rock base and the CLSM to prevent the material from bleeding into the rock base. The remaining eight inches will be restored by placing a twenty eight day minimum strength, four thousand psi concrete mix.

**CITY OF O'FALLON
ENGINEERING DEPARTMENT
O'FALLON, MISSOURI**

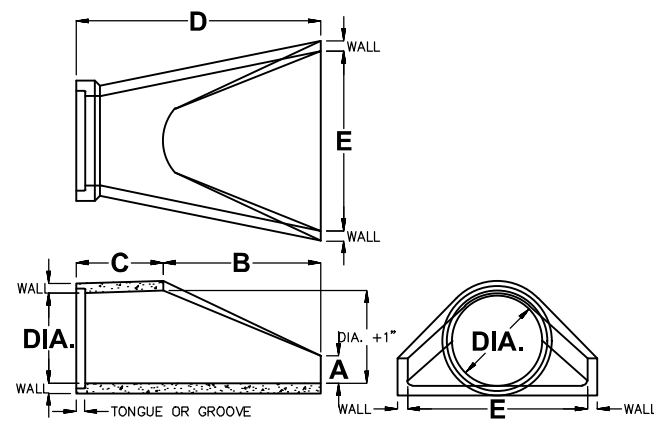
**DETAILS OF TEMPORARY
OPENINGS IN
ROADWAY PAVEMENT**



TRENCH DETAIL



AREA INLET SEDIMENT PROTECTION



FLARED END SECTION DETAIL

DIA.	WALL	TONGUE OR GROOVE	WEIGHT	A	B	C	D	E
15"	2-1/4"	1-3/4"	970	6"	27"	46"	73"	30"
18"	2-1/2"	1-3/4"	1340	9"	27"	46"	73"	36"
24"	3"	1-3/4"	1820	9-1/2"	43-1/2"	30"	73-1/2"	48"
30"	4-1/4"	3-7/8"	2400	12"	54"	19-3/4"	73-3/4"	60"
36"	4-3/4"	3-7/8"	5500	15"	63"	34-3/4"	97-3/4"	72"

REINFORCED CONCRETE PIPE CONFORMS TO ASTM C-76, ASTM-C-443, AASHTO M-170, AND AASHTO M-198.

SELECT AGGREGATE GRANULAR BACKFILL MSD TYPE 1 INSTALLATION PER ASTM F2648 FOR FLEXIBLE PIPE OR COMPACTED EXCAVATED MATERIAL FOR RIGID PIPE

NOTES:

- INSTALLATION TO BE COMPLETED IN ACCORDANCE WITH MANUFACTURER'S SPECIFICATIONS.
- FIBER ROLLS SHOULD BE INSPECTED AFTER EVERY SIGNIFICANT STORM EVENT TO CLEAR AND DISPOSE OF SEDIMENT AND DEBRIS.

SPECIFICATIONS:

WATTLES SHALL BE A STRAW-FILLED TUBE OF FLEXIBLE NETTING MATERIAL. IT SHALL BE A MACHINE PRODUCED TUBE OF COMPACTED RICE STRAW THAT IS CERTIFIED WEED FREE FORAGE, BY A MANUFACTURER WHOSE PRINCIPAL BUSINESS IS WATTLE MANUFACTURING. THE NETTING SHALL CONSIST OF SEAMLESS, HIGH DENSITY POLYETHYLENE, AND ETHYL VINYL ACETATE AND CONTAIN ULTRAVIOLET LIGHT INHIBITORS. THE WATTLE SHALL HAVE A MINIMUM MASS PER UNIT WEIGHT OF 1.6 LBS./FT., A MINIMUM DIAMETER OF 8.0 - 9.0 INCHES, A MINIMUM NET STRAND THICKNESS OF 0.03 INCHES, A MINIMUM NET KNOT THICKNESS OF 0.055 INCHES AND A MINIMUM NETTING UNIT WEIGHT OF 0.35 OUNCES/FOOT. THE SEDIMENT RETENTION CAPACITY OF THE WATTLE SHALL BE 30 LBS./FOOT. FIBRE CONTENT SHALL BE 100 PERCENT CERTIFIED RICE STRAW WITH A MINIMUM LENGTH OF 3.0.



CHAD D. ROSS
ENGINEER NO# PE-2011024027

DATE PREPARED
03/06/18

ROUTE MU
DISTRICT SHEET NO. 5

COUNTY ST. CHARLES

JOB NO. M29160608

CONTRACT ID. PO #17-0040

PROJECT NAME BOYER ST. STORM

SHEET NAME
DETAIL STORM SEWER - EROSION CONTROL

DATE	DESCRIPTION

CITY OF O'FALLON, MO
PUBLIC WORKS DEPARTMENT
100 NORTH MAIN STREET
O'FALLON, MO 63366
636.379.5566



ST. CHARLES OFFICE
700 N. 5TH STREET, SUITE 101
ST. CHARLES, MISSOURI 63301
TEL (636) 724-8304
FAX (636) 724-8304
stchar@tww-inc.com

PROFESSIONAL REGISTRATIONS: LICENSED MISSOURI PROFESSIONAL ENGR. CORP. NO. 001028 MISSOURI SURVEYORS & PLANNERS INCORPORATED MISSOURI LAND SURVEYING CORP. NO. 000346

