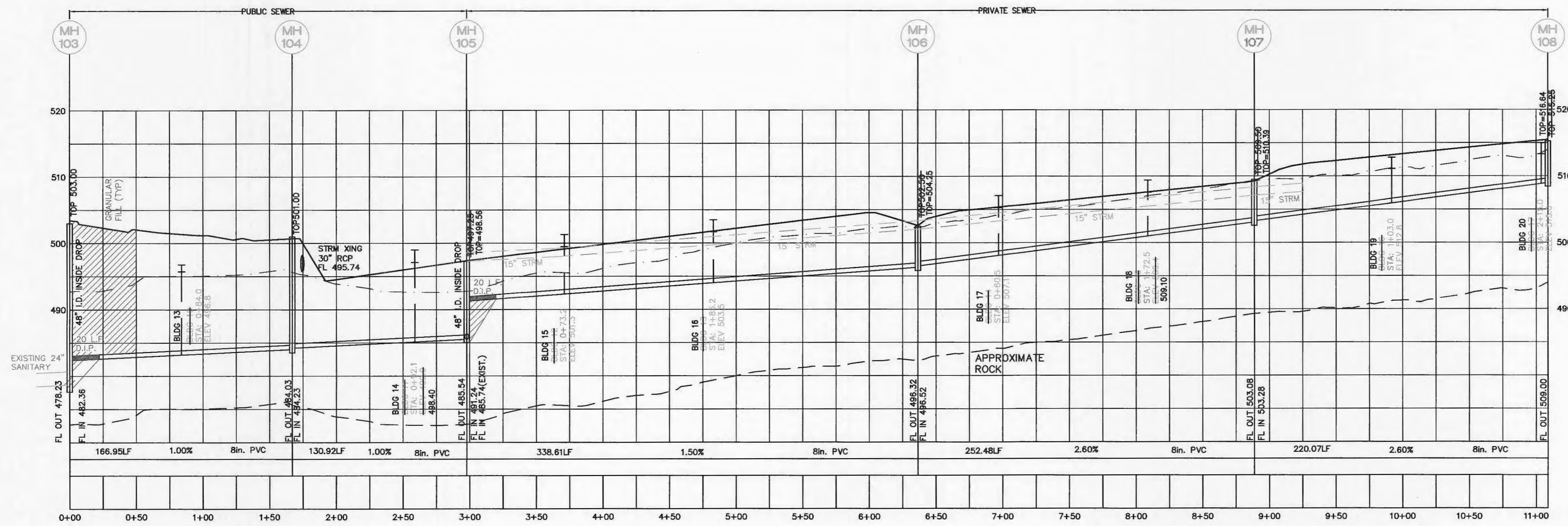


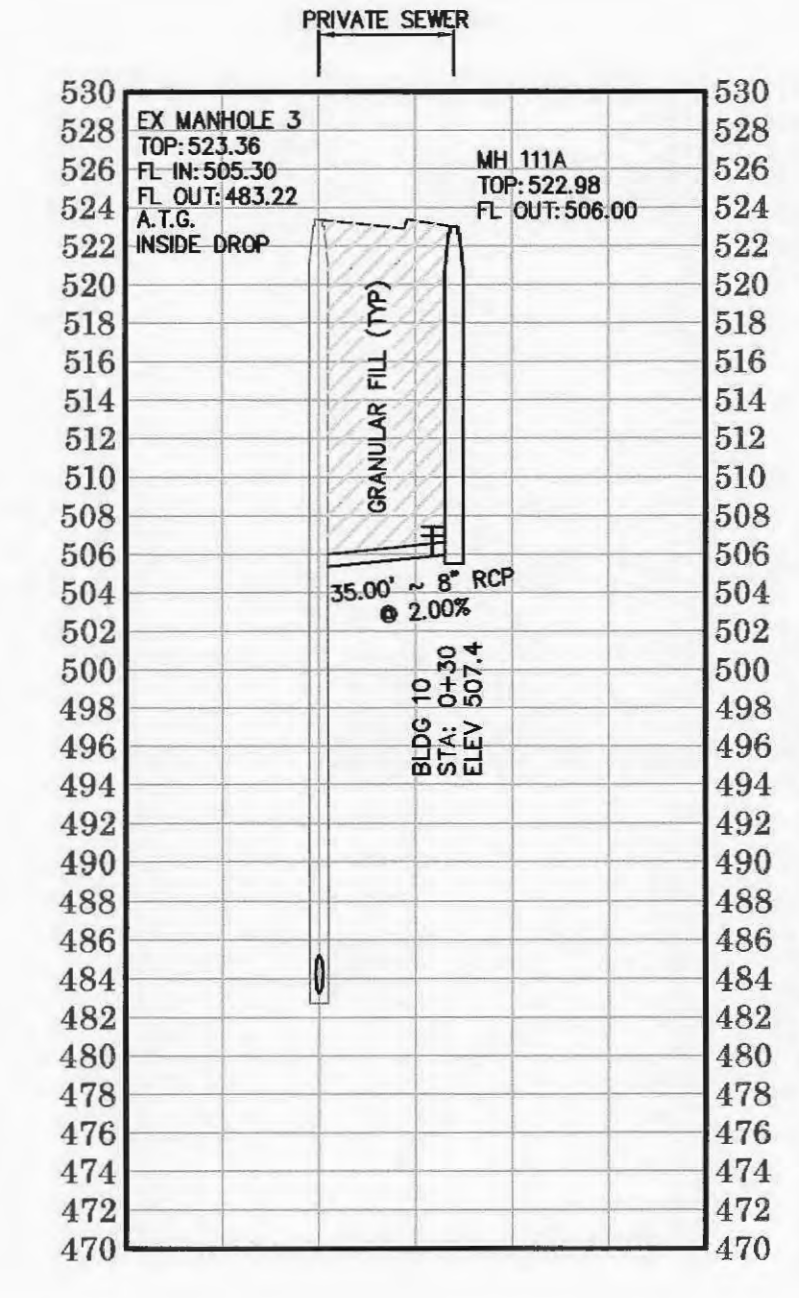
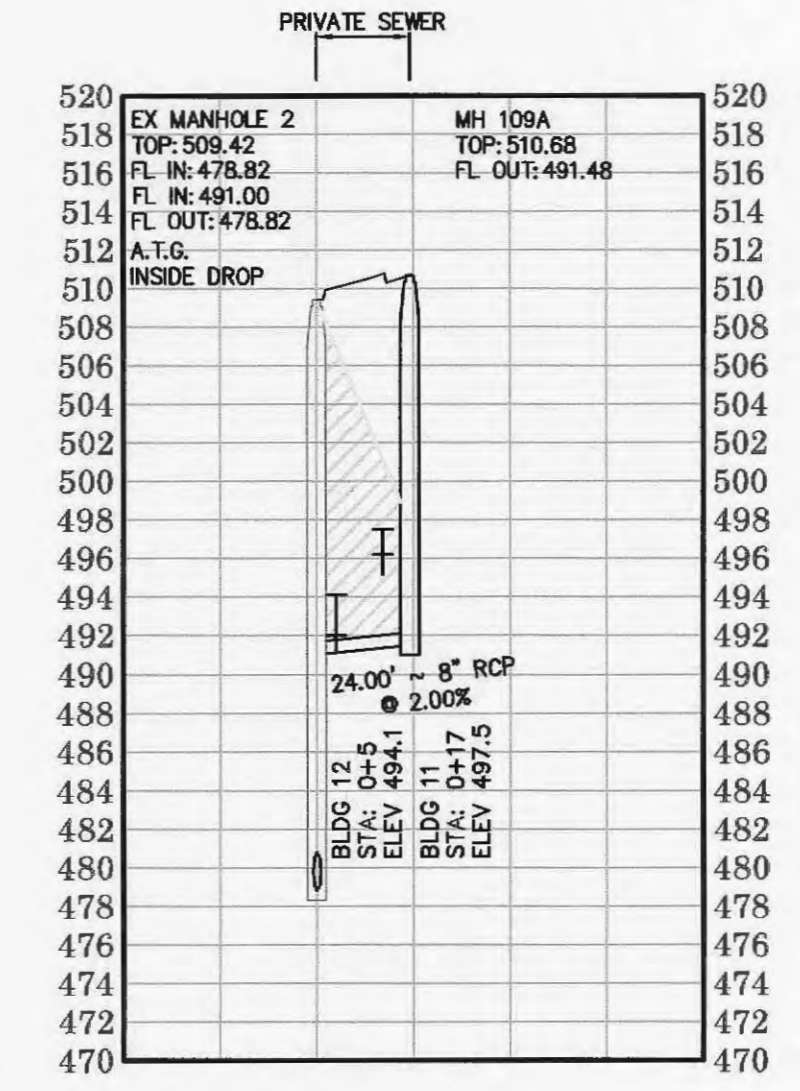
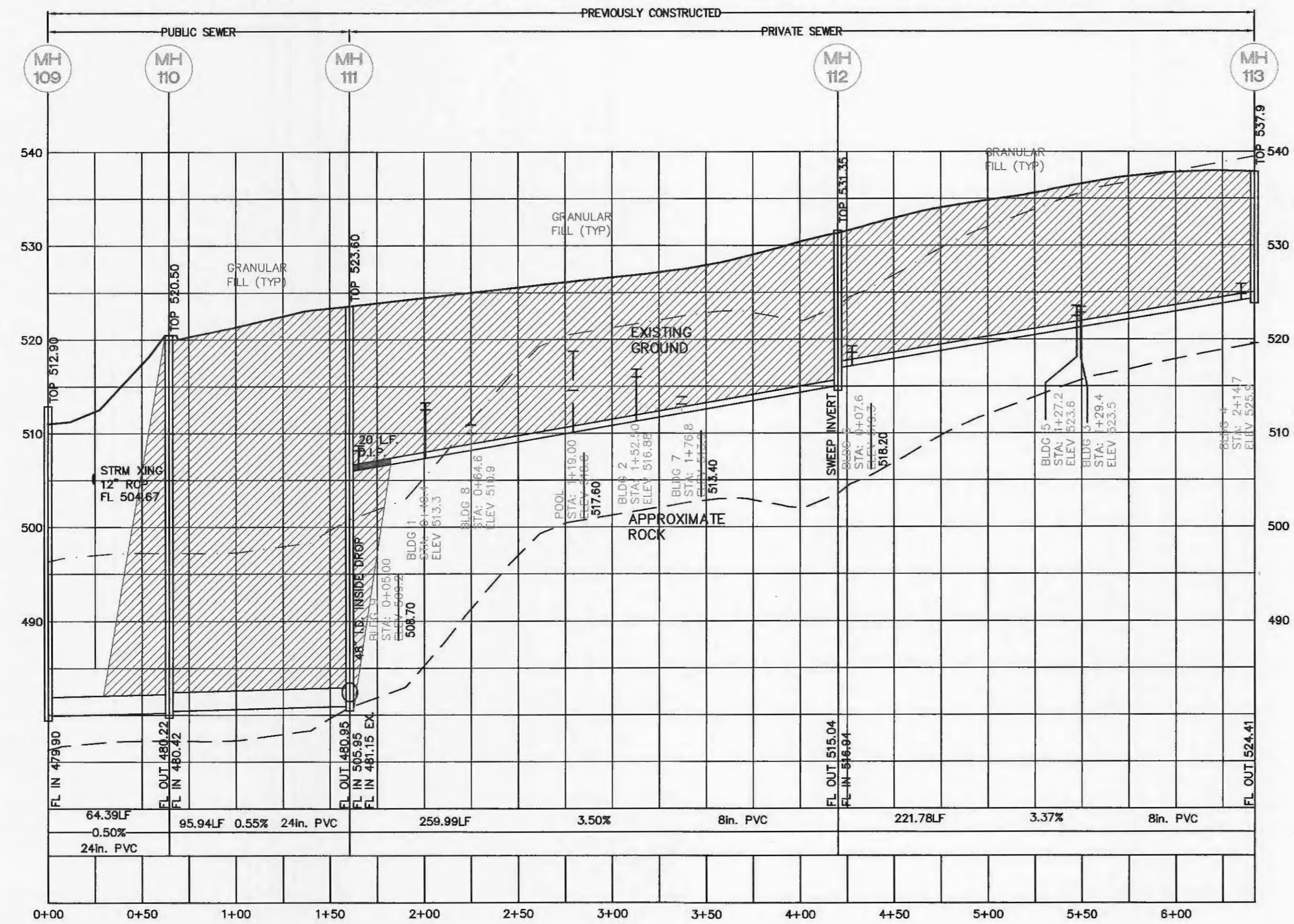
THIS SEWER PROFILE DESIGNED BY OTHERS AND ARE SHOWN PER THE APPROVED SET OF PLANS ON FILE AT THE CITY STAMPED APPROVED 03-12-09 (REVISIONS TO PREVIOUSLY APPROVED DESIGN ARE NOTED BELOW)



- SANITARY NOTES:
1. A minimum of 6" diameter pipe shall be used for sanitary laterals.
 2. A minimum of 8" diameter pipe shall be used for sanitary sewers.
 3. Sewer grease traps and cleanouts required on sanitary laterals as shown.
 4. Inside drop manholes must be a minimum of 48" in diameter.
 5. Sanitary sewer line placement shall be a minimum of 10' from any proposed structures.
 6. All manholes are to have a minimum 0.20' drop across the structure.
 7. For drop structures, compacted rock backfill is required in the disturbed ground around the structure.
 8. A concrete cradle for RCP and encasement for HDPE will be required for all storm sewer lines when crossing less than 18" above the sanitary lines.

VERT. SCALE: 1"=10'
HORIZ. SCALE: 1"=50'

THIS SEWER PROFILE DESIGNED BY OTHERS AND ARE SHOWN PER THE APPROVED SET OF PLANS ON FILE AT THE CITY STAMPED APPROVED 03-12-09 (REVISIONS TO PREVIOUSLY APPROVED DESIGN ARE NOTED BELOW)



PROJECT TITLE

THD DESIGN GROUP, INC.

Developer / Owner Information:
Michael Towerman
Towerman Construction

P+Z No:
Approval
City No.

Page No