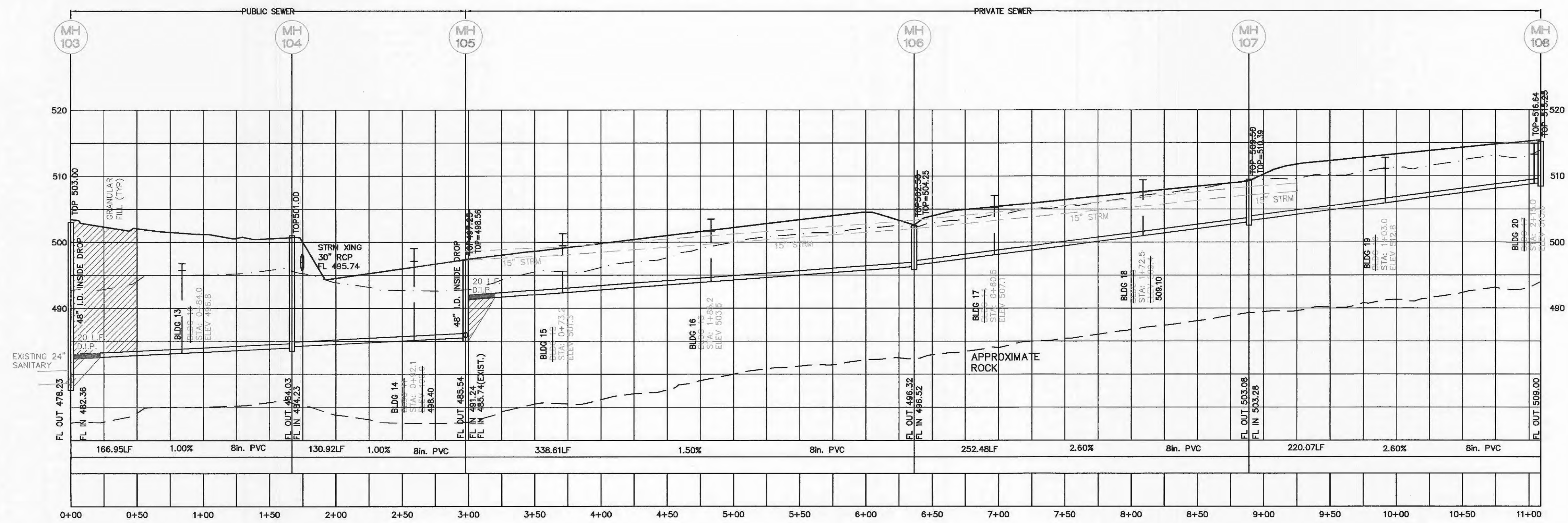


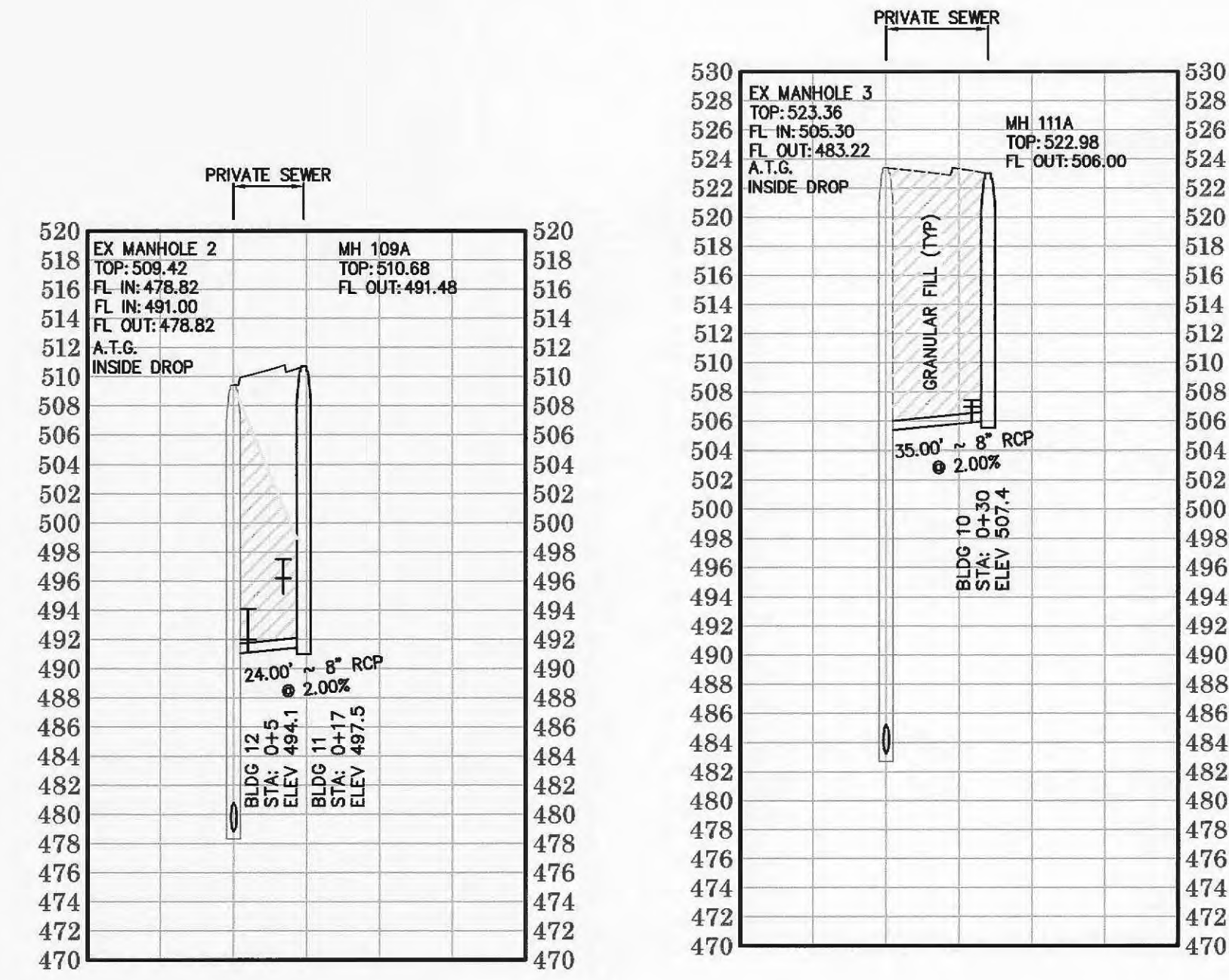
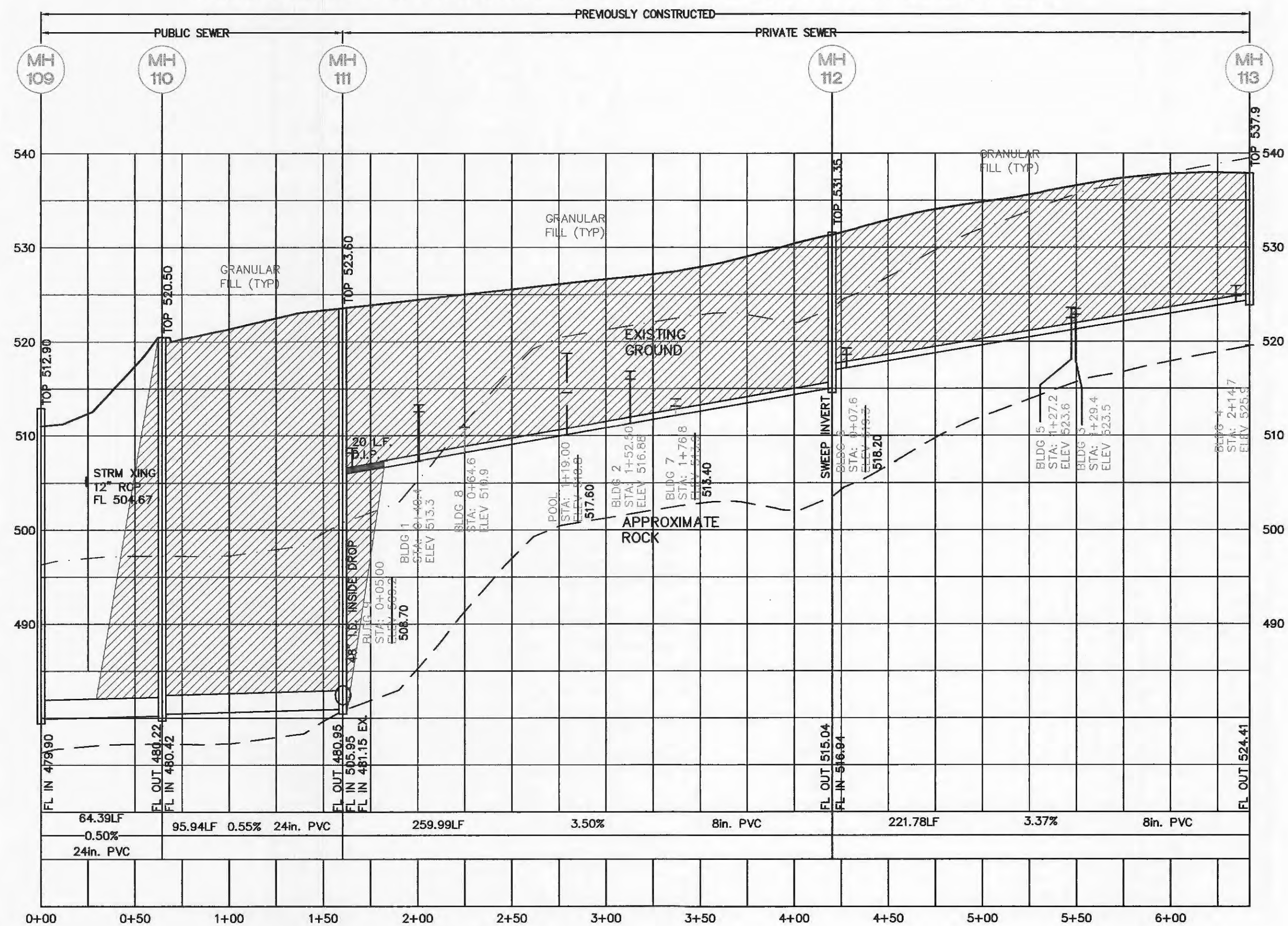
THIS SEWER PROFILE DESIGNED BY OTHERS AND ARE SHOWN PER THE APPROVED SET OF PLANS ON FILE AT THE CITY STAMPED APPROVED 03-12-09 (REVISIONS TO PREVIOUSLY APPROVED DESIGN ARE NOTED BELOW)



- SANITARY NOTES:
1. A minimum of 6" diameter pipe shall be used for sanitary laterals.
 2. A minimum of 8" diameter pipe shall be used for sanitary sewers.
 3. Sewer grease traps and cleanouts required on sanitary laterals as shown.
 4. Inside drop manholes must be a minimum of 48" in diameter.
 5. Sanitary sewer line placement shall be a minimum of 10' from any proposed structures.
 6. All manholes are to have a minimum 0.20' drop across the structure.
 7. For drop structures, compacted rock backfill is required in the disturbed ground around the structure.
 8. A concrete cradle for RCP and encasement for HDPE will be required for all storm sewer lines when crossing less than 18" above the sanitary lines.

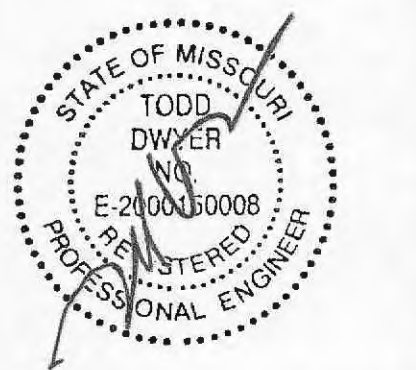
VERT. 1"=10'
HORIZ. 1"=50'
SCALE:

THIS SEWER PROFILE DESIGNED BY OTHERS AND ARE SHOWN PER THE APPROVED SET OF PLANS ON FILE AT THE CITY STAMPED APPROVED 03-12-09 (REVISIONS TO PREVIOUSLY APPROVED DESIGN ARE NOTED BELOW)



PROJECT TITLE
BRAMBLETT HILLS APARTMENTS

THD DESIGN GROUP, INC.
"your solution for engineering and surveying"
COPYRIGHT 2011
148 CHESTERFIELD INDUSTRIAL BLVD, CHESTERFIELD, MO 63005
TEL: 636-594-9272
FAX: 636-594-9277
WEB: THDDESIGNGROUP.COM



Developer / Owner Information:
Michael Towerman
TriStar Properties
13397 Lakefront Drive
Earth City, MO 63045

Sanitary Sewer Profiles

P+Z No: 3805.05.02
Approval Date: 02/05/2015

City No.

Page No.
13 OF 28