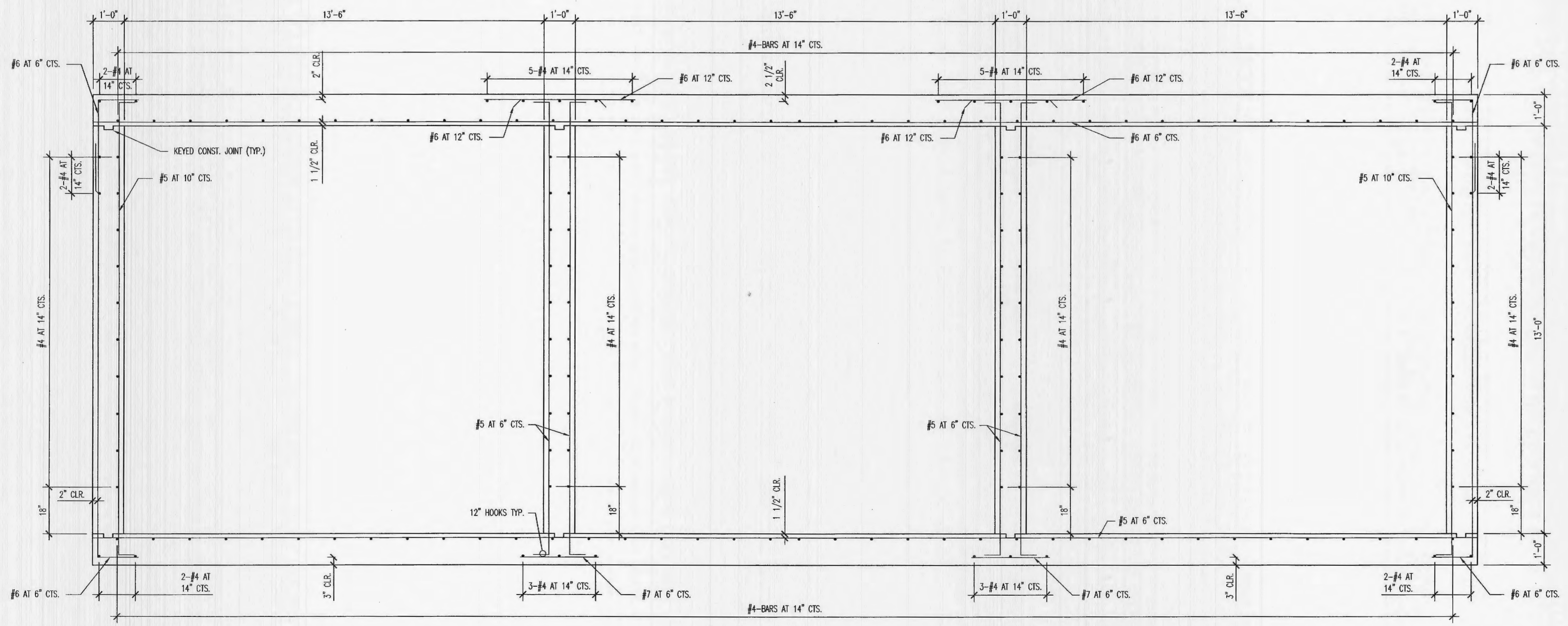
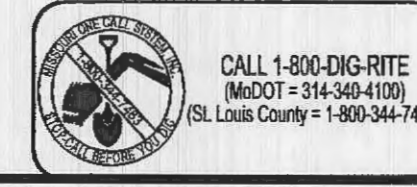


SECTION THRU WINGS  
SCALE: 1/2" = 1'-0"



SECTION THRU BOX  
SCALE: 1/2" = 1'-0"



**NOTES:**  
CONTRACTOR TO COMPLY WITH ALL GOVERNING REGULATIONS AND REQUIREMENTS, INCLUDING OSHA REGULATIONS 29 CFR PART 1926 FOR CONSTRUCTION INDUSTRY.

**NOTES:**  
THE STRUCTURAL ENGINEER OF RECORD IS NOT RESPONSIBLE FOR MEANS AND METHODS OF CONSTRUCTION INCLUDING FABRICATION, TECHNIQUES, AND SAFETY AT THE CONSTRUCTION SITE. THE CONTRACTOR IS RESPONSIBLE FOR DESIGN AND INSTALLATION OF ALL TEMPORARY SHORING, BRACING, BOLTING, WELDING, LUGS, SEAT ANGLES, ETC., TO SAFELY CONSTRUCT THE PROJECT. THE CONTRACTOR IS TO COORDINATE BETWEEN DISCIPLINES AND BRING ANY DISCREPANCY TO THE ATTENTION OF THE ENGINEER PRIOR TO CONSTRUCTION.

**NOTES:**  
THE STRUCTURAL DRAWINGS ARE NOT A SET OF STAND ALONE CONSTRUCTION DOCUMENTS. THESE STRUCTURAL DRAWINGS MUST ONLY BE USED IN CONJUNCTION WITH OTHER RELATED DISCIPLINES. CONTRACTOR TO VERIFY EXISTING CONDITIONS AND COORDINATE BETWEEN DISCIPLINES. ANY DISCREPANCY BETWEEN THE DRAWINGS MUST BE BROUGHT TO THE ENGINEER'S ATTENTION FOR RESOLUTION PRIOR TO FABRICATION OR CONSTRUCTING THAT PORTION OF THE STRUCTURE.

**NOTES:**  
FEMA BENCHMARK:  
BENCH - ELEVATION (INCH) 480.00 2-INCH CUT SQUARE IN CENTER OF NORTH END OF MAINWAY AT THE NORTHEAST CORNER OF BELLEAU CREEK ROAD BRIDGE OVER BELLEAU CREEK  
SITE BENCHMARK:  
ELEV. -488.07 TOP OF EXISTING MANHOLE ON EASTERN PROPERTY LINE

DATE:	1/4/2008
CHECKED:	S.R.M.
DRAWN:	A.P. & N.J.M.
SCALE:	noted:

PRELIMINARY  
**BOX CULVERT ON BRAMBLETT ROAD**  
BRAMBLETT DEVELOPMENT LLC  
913 LAFAYETTE LANDING PLACE  
St. CHARLES, MO 63303 PHONE: 314-452-5000

SHEET NO. **S2**  
3 OF 3

**FRONTENAC ENGINEERING GROUP**  
CIVIL / STRUCTURAL / LAND SURVEYING  
2725 SUTTON BLVD.  
ST. LOUIS, MISSOURI 63143  
PHONE: (314) 644-2200 FAX: (314) 644-0645  
www.frontenacengineering.com



NO.	DATE	REMARKS	ISSUE / REVISION DESCRIPTIONS



THE PROFESSIONAL SEAL AND SIGNATURE APPLY ONLY TO THIS DRAWING. THE ENGINEER OF RECORD IS NOT RESPONSIBLE FOR MEANS AND METHODS OF CONSTRUCTION INCLUDING FABRICATION, TECHNIQUES, AND SAFETY AT THE CONSTRUCTION SITE. THE CONTRACTOR IS RESPONSIBLE FOR DESIGN AND INSTALLATION OF ALL TEMPORARY SHORING, BRACING, BOLTING, WELDING, LUGS, SEAT ANGLES, ETC., TO SAFELY CONSTRUCT THE PROJECT. THE CONTRACTOR IS TO COORDINATE BETWEEN DISCIPLINES AND BRING ANY DISCREPANCY TO THE ATTENTION OF THE ENGINEER PRIOR TO CONSTRUCTION.