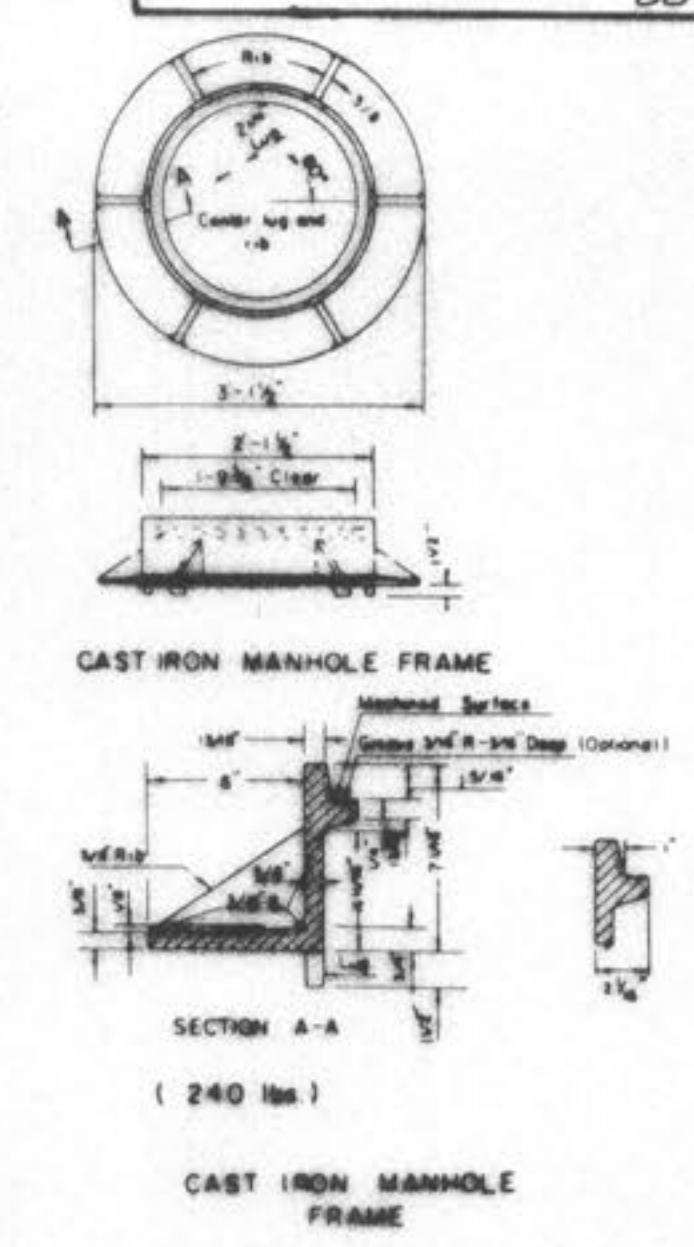


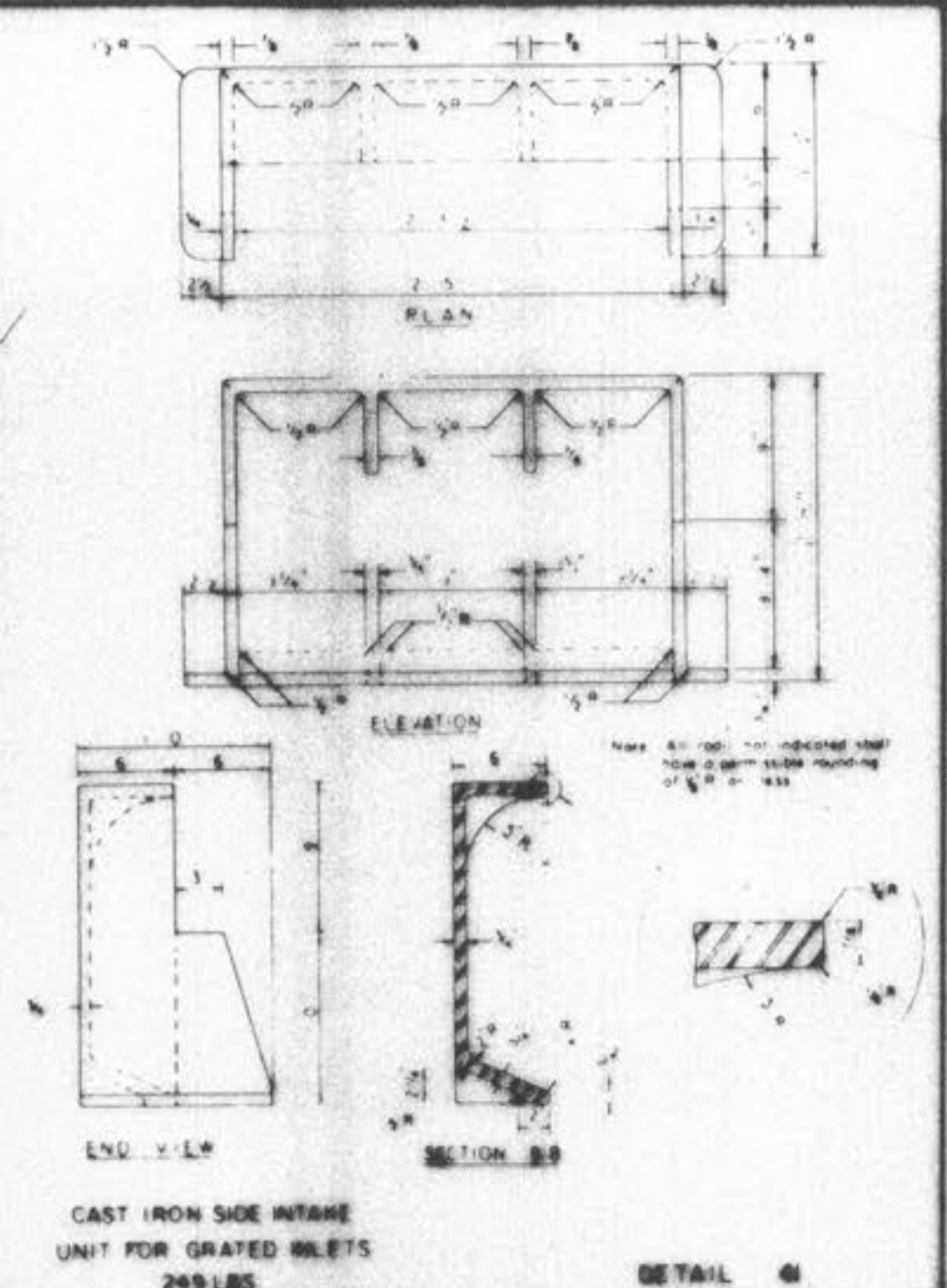
DETAIL 42



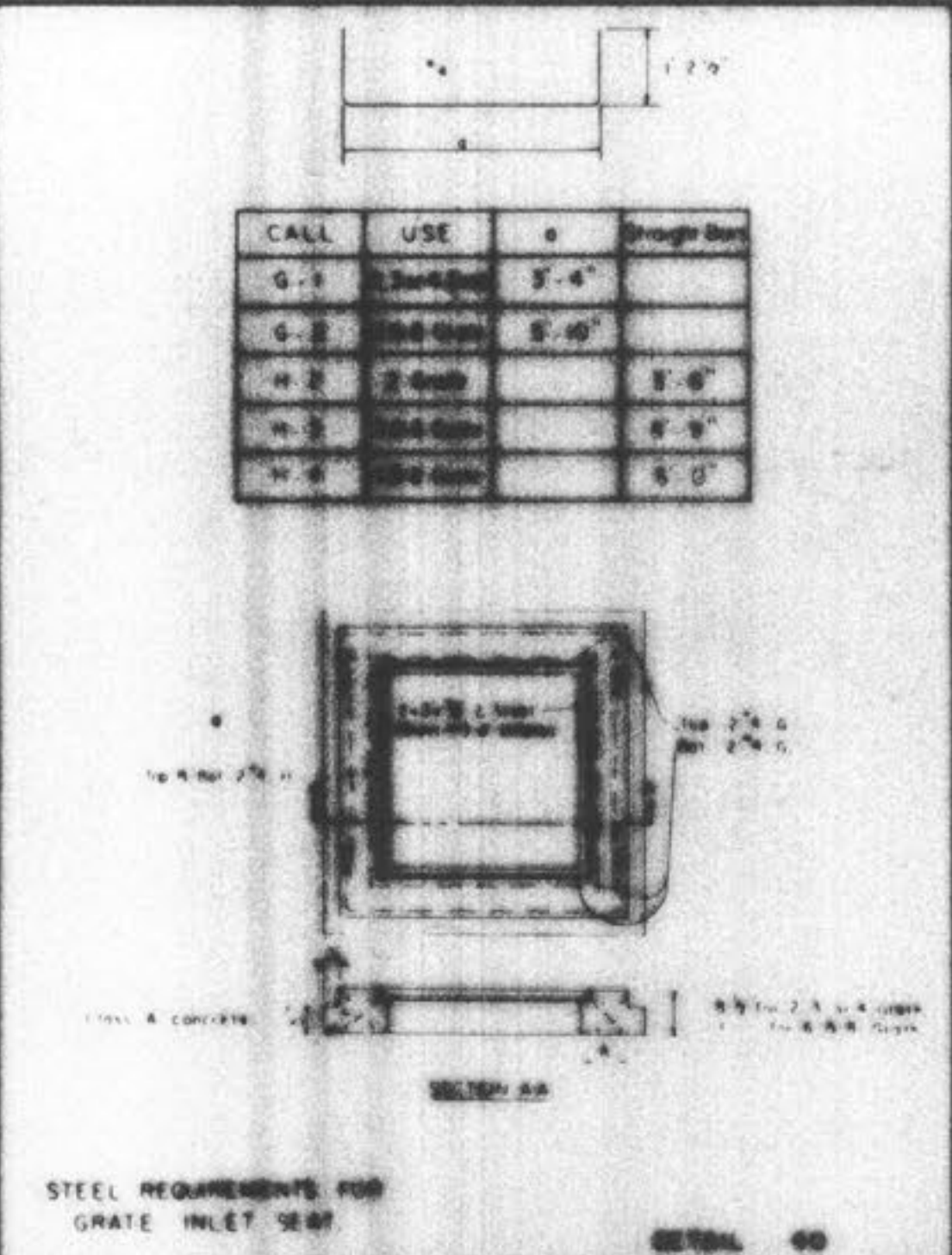
CAST IRON MANHOLE FRAME

(240 lbs)

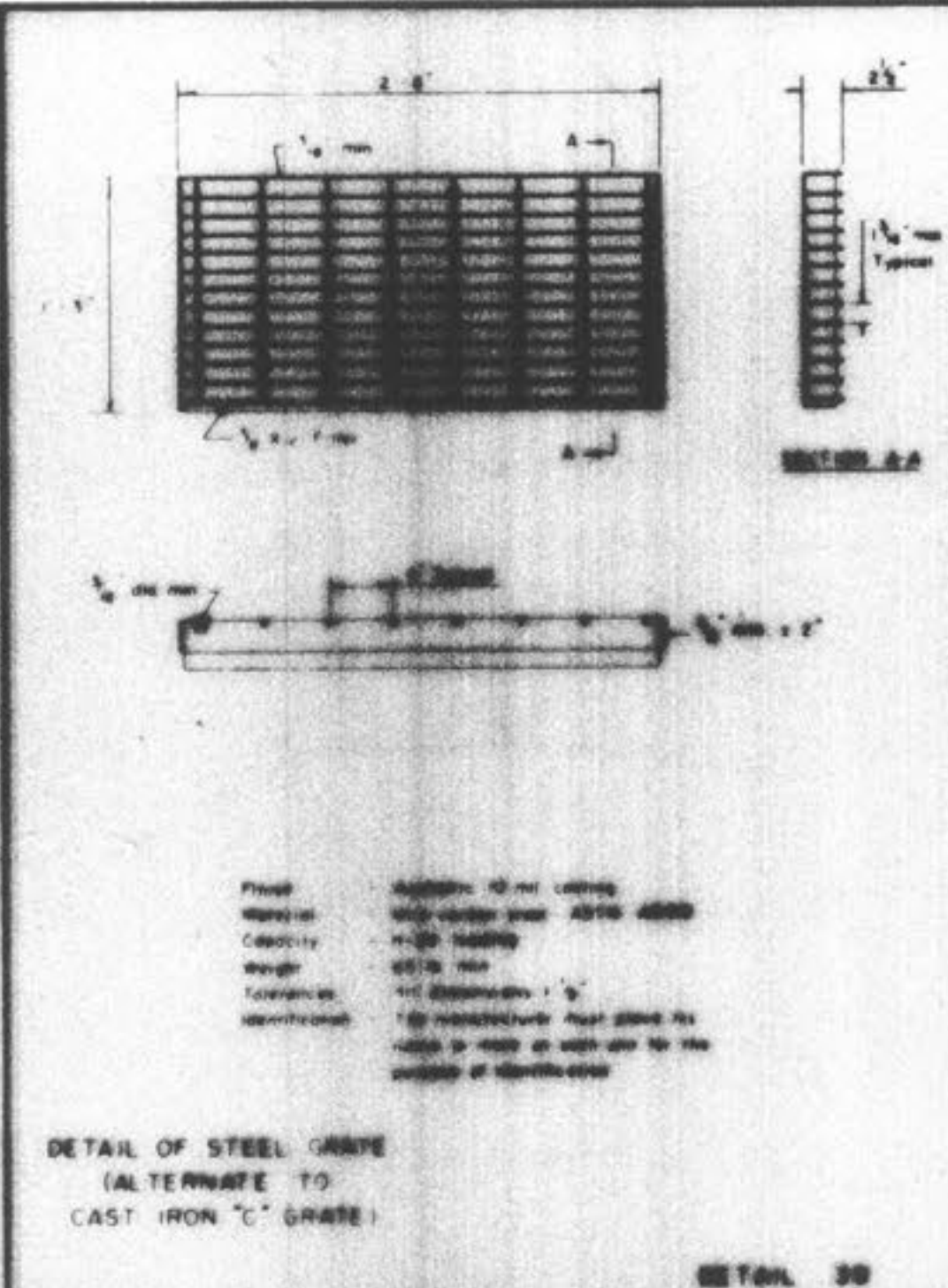
CAST IRON MANHOLE FRAME



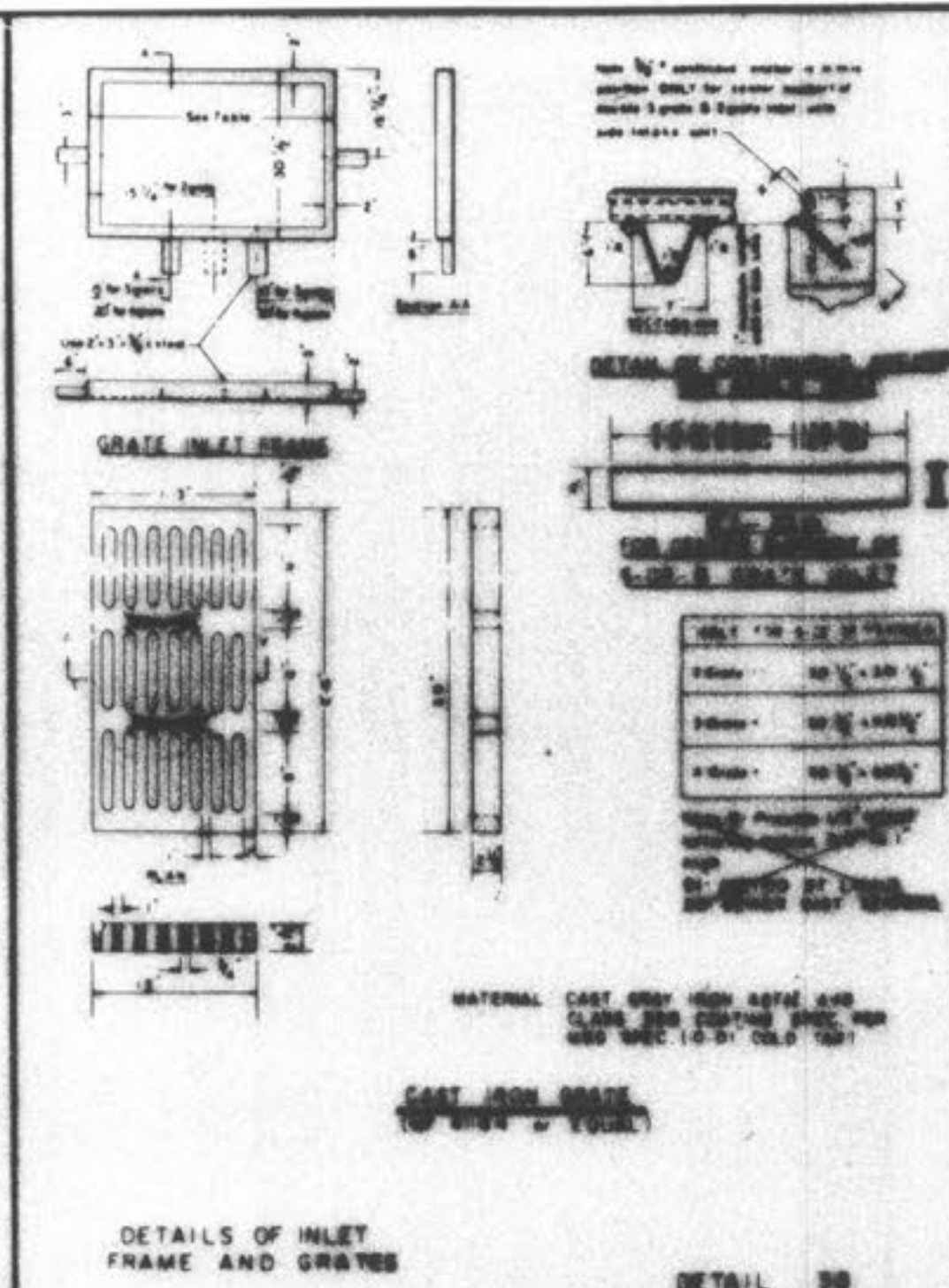
CAST IRON SIDE INTAKE UNIT FOR GRATED INLETS  
245 LBS



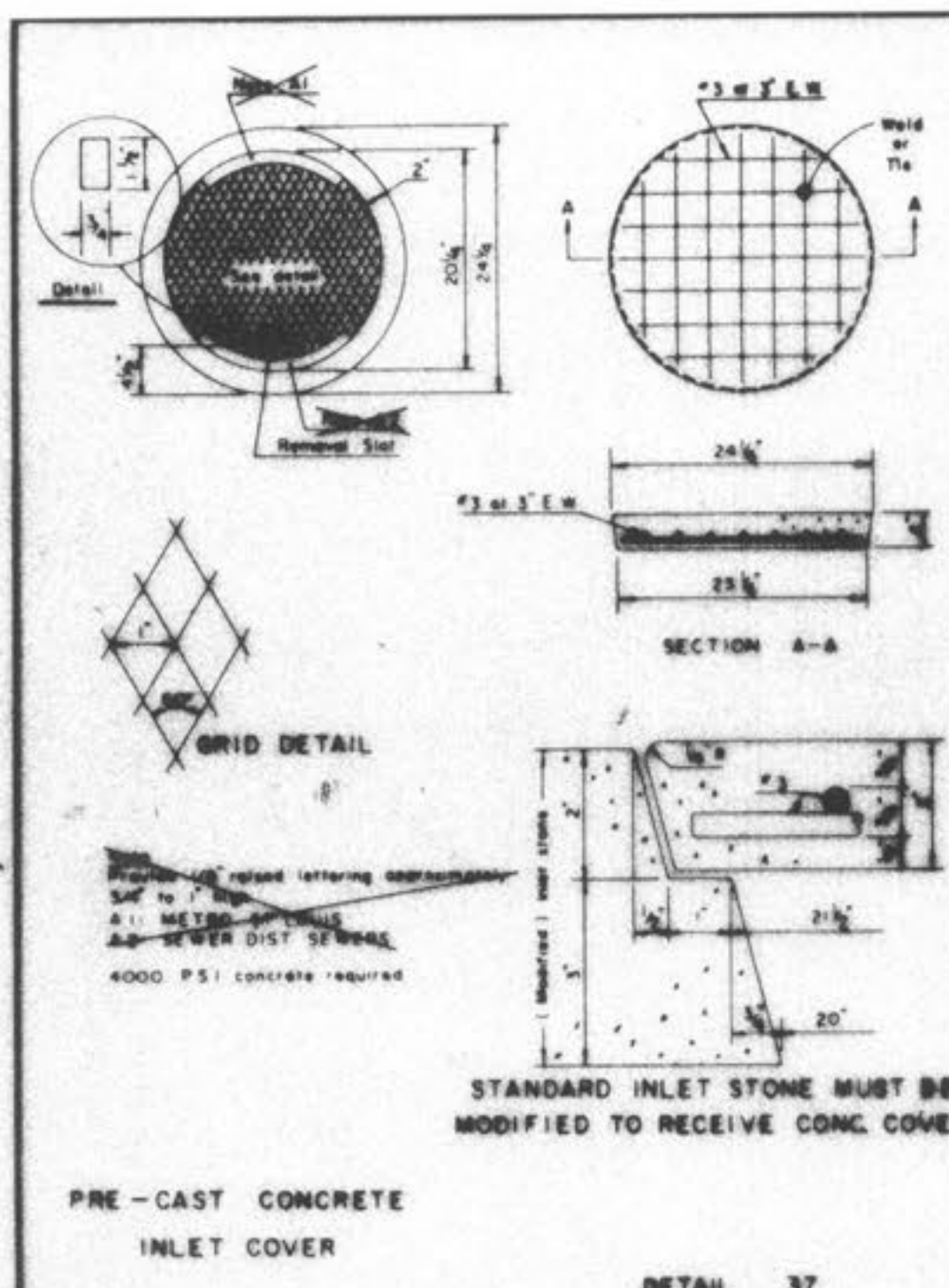
STEEL REQUIREMENTS FOR GRATE INLET SEBT



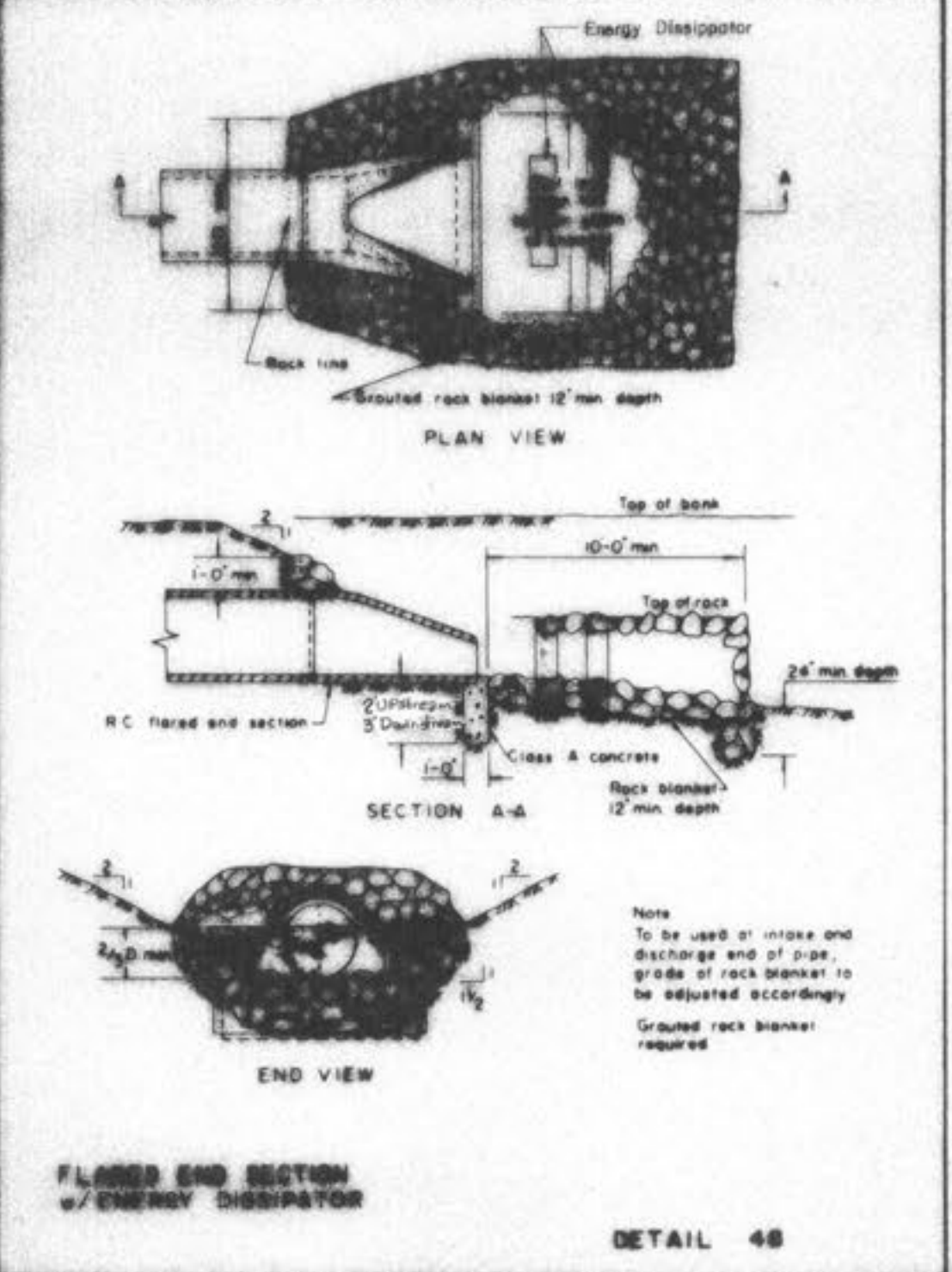
DETAIL OF STEEL GRATE (ALTERNATE TO CAST IRON 'C' GRATE)



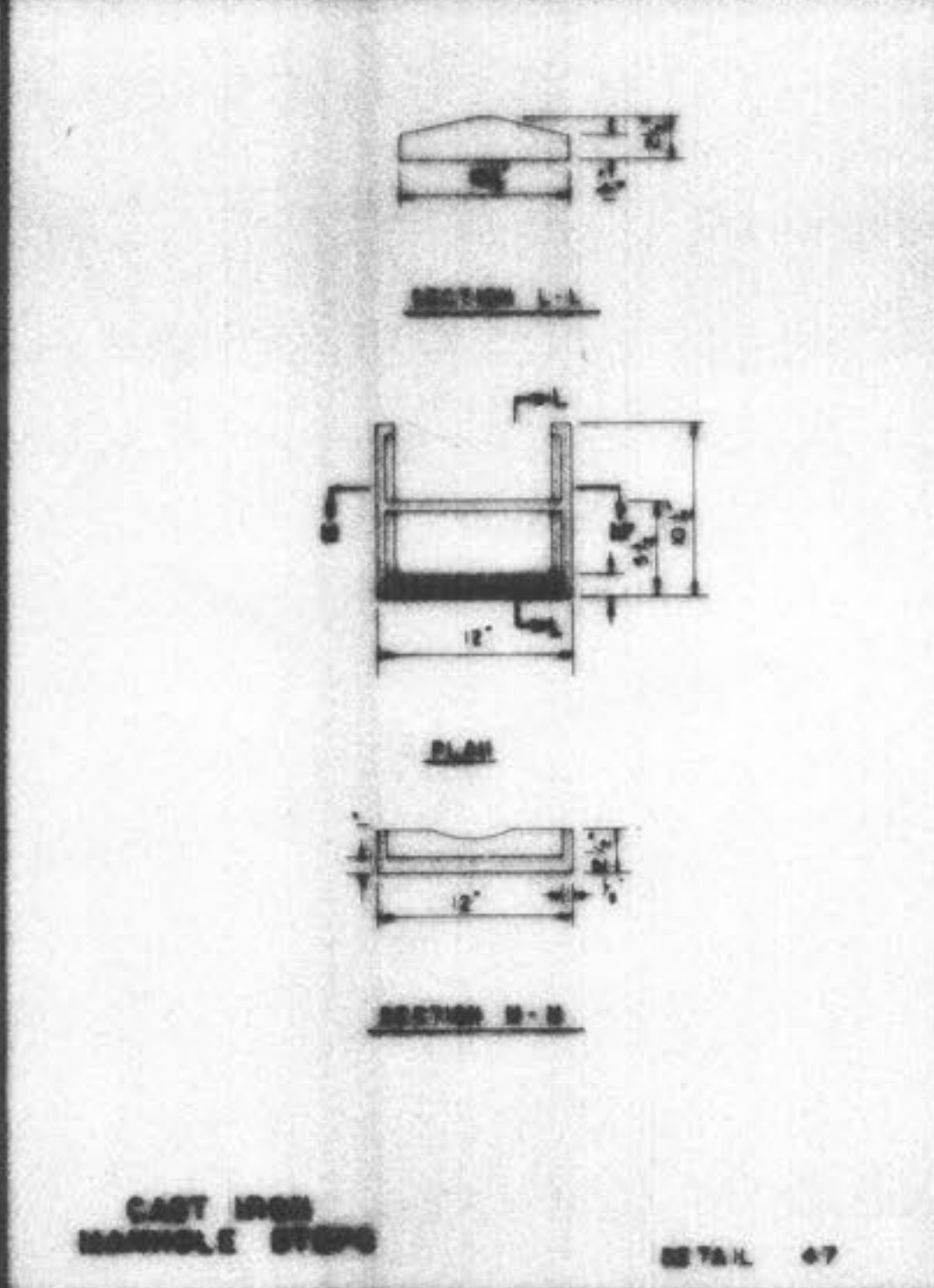
DETAILS OF INLET FRAME AND GRATES



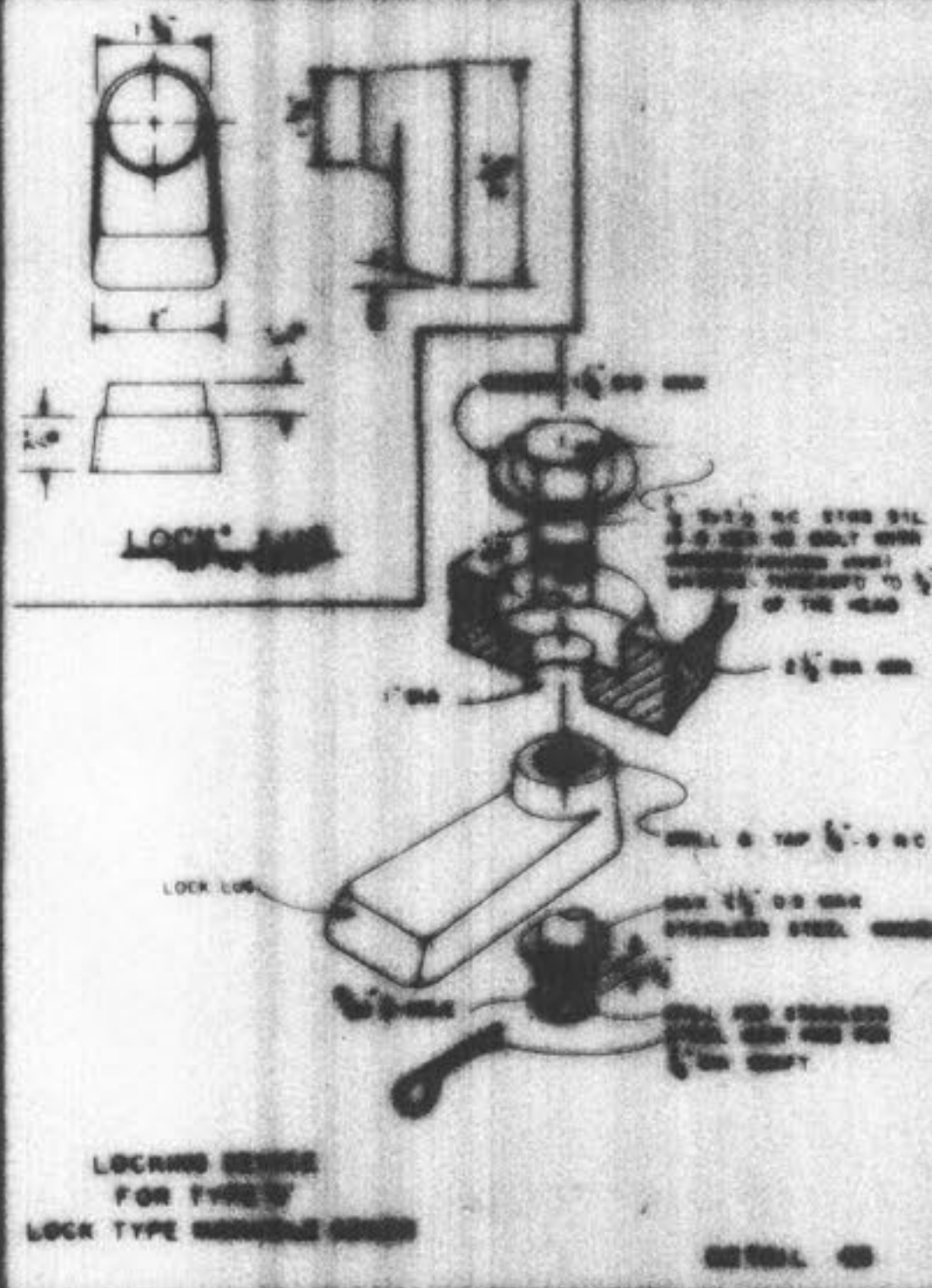
PRE-CAST CONCRETE INLET COVER



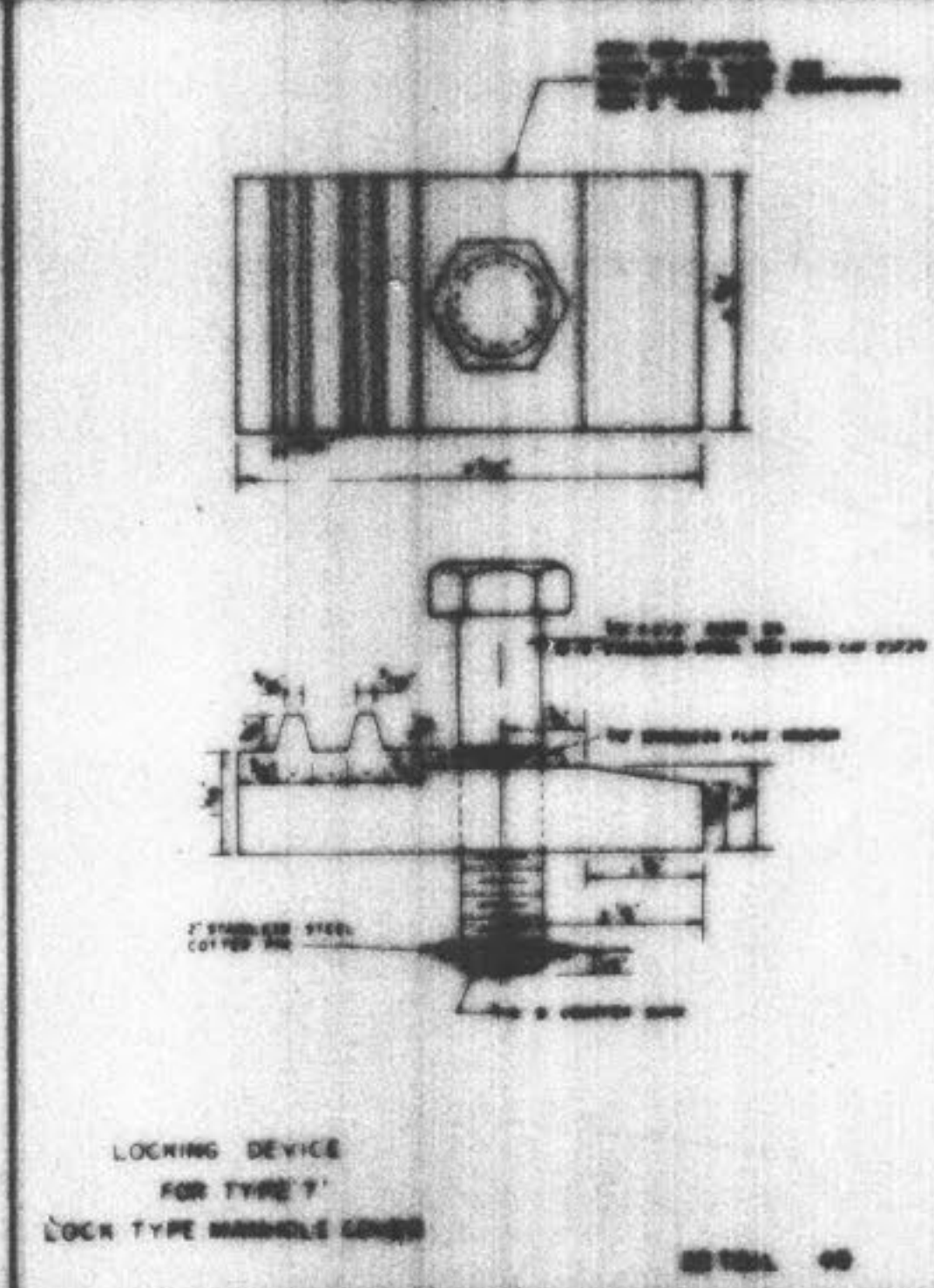
FLOOR END SECTION w/ ENERGY DISSIPATOR



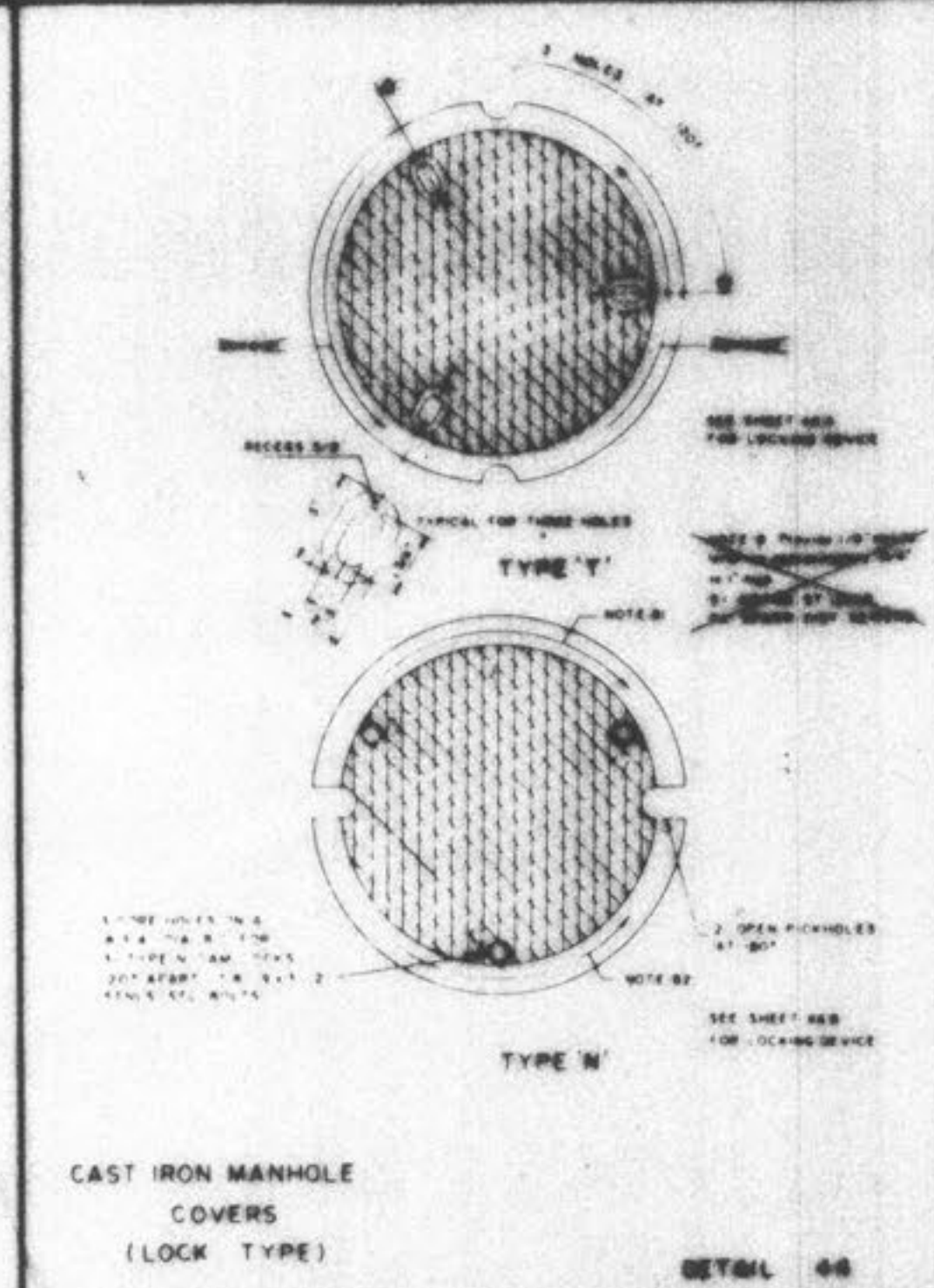
CAST IRON MANHOLE STEPS



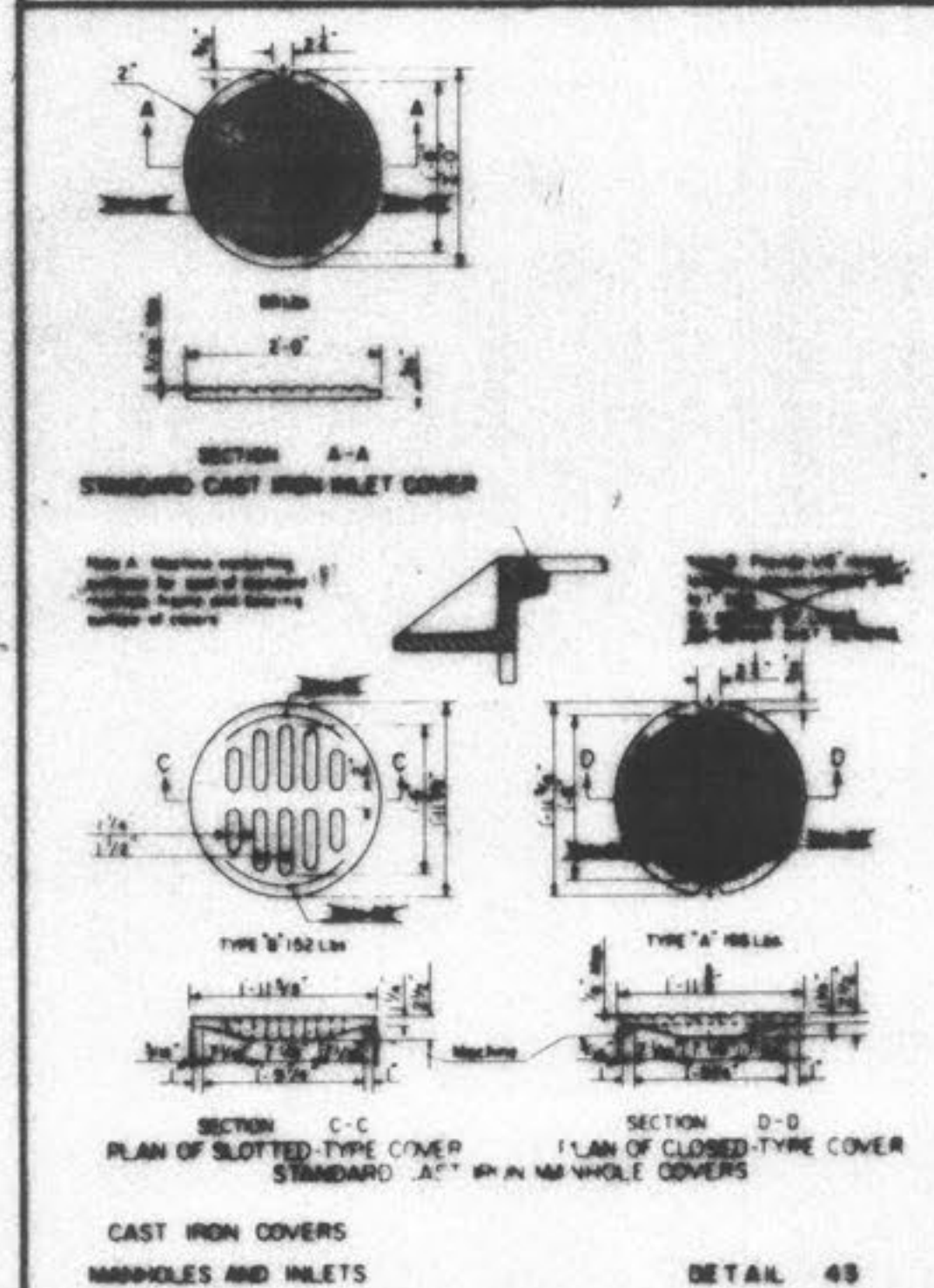
LOCKING DEVICE FOR TYPE 'Y' LOCK TYPE MANHOLE COVER



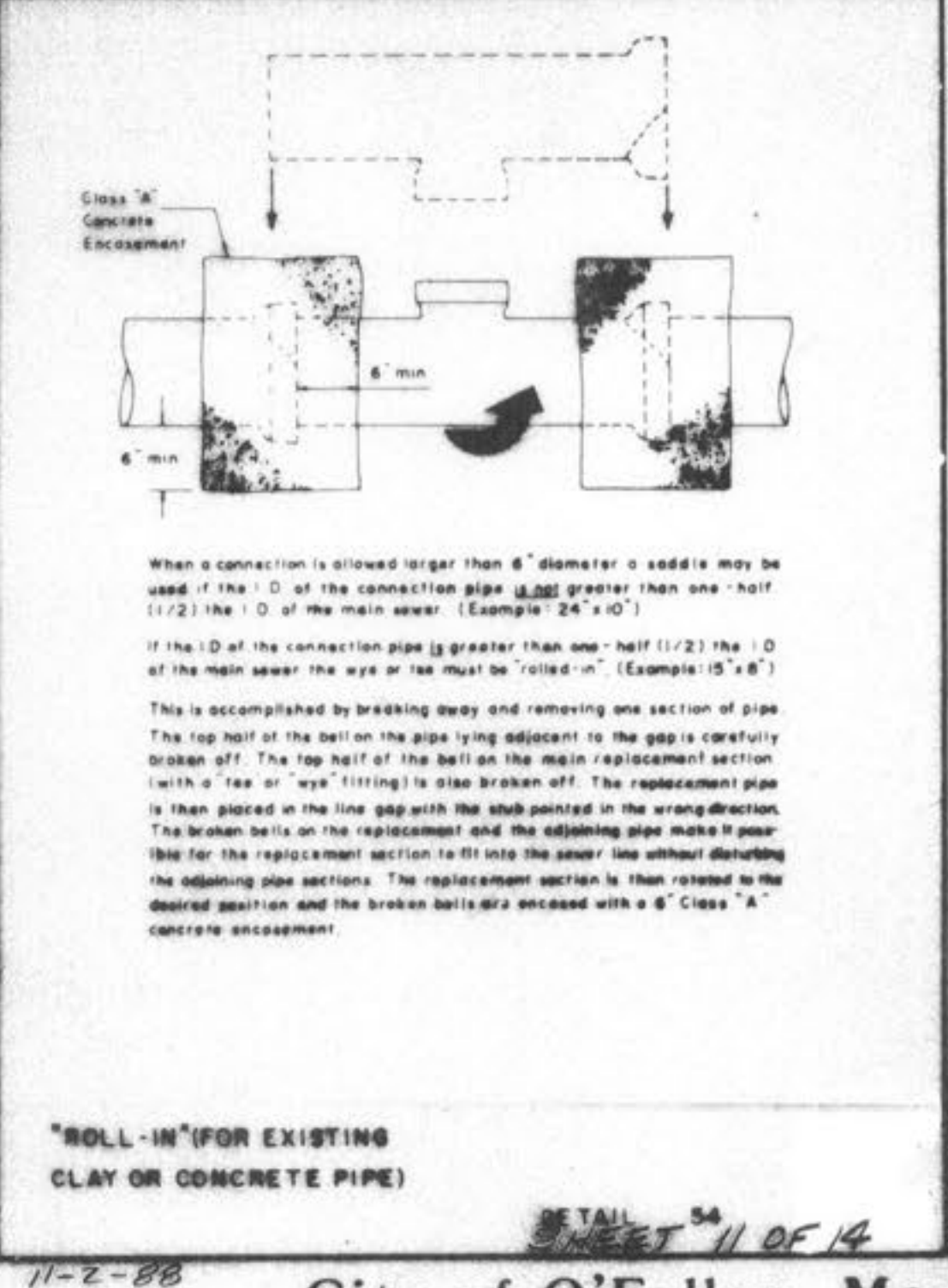
CAST IRON MANHOLE COVERS (LOCK TYPE)



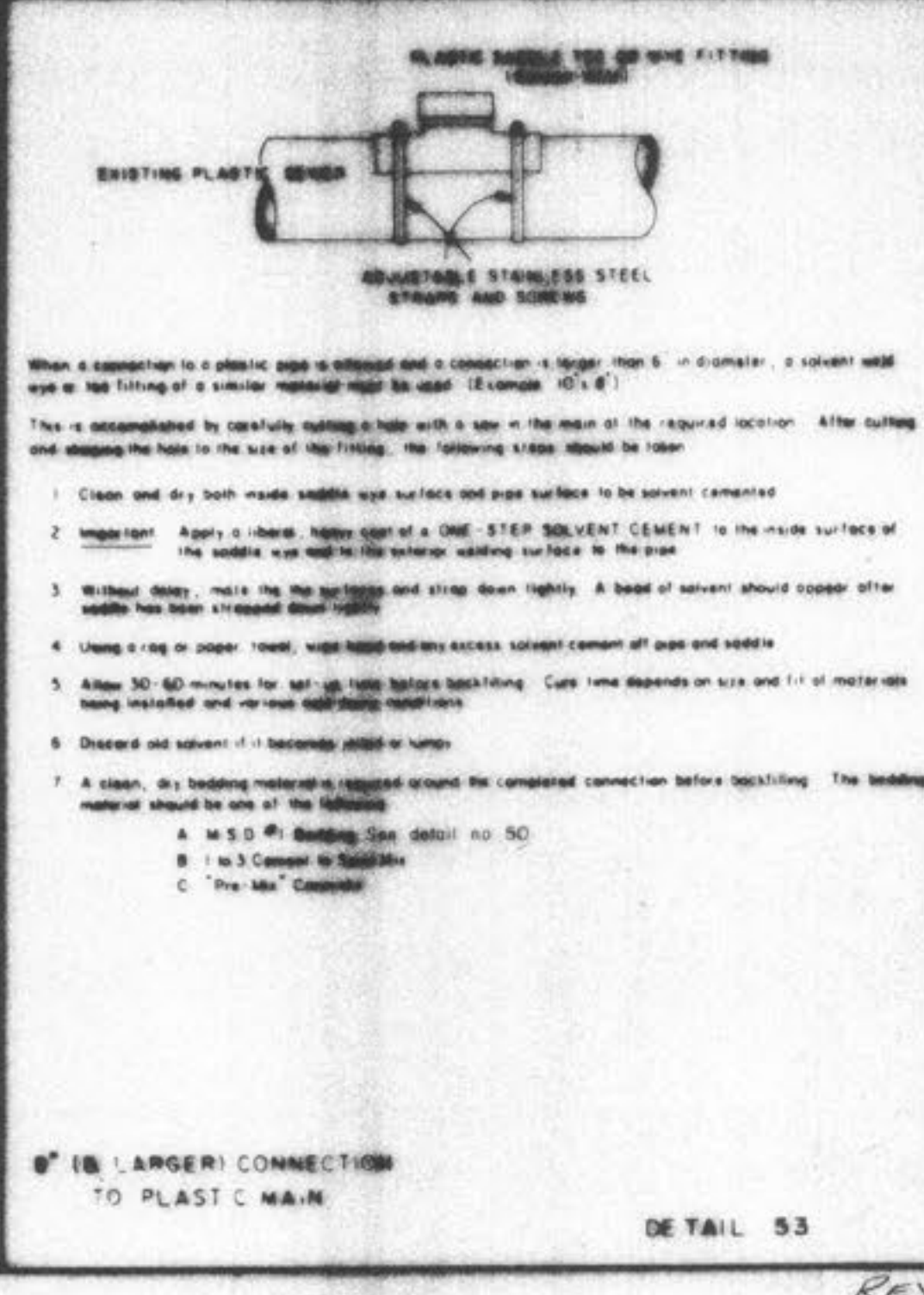
STANDARD CAST IRON INLET COVER



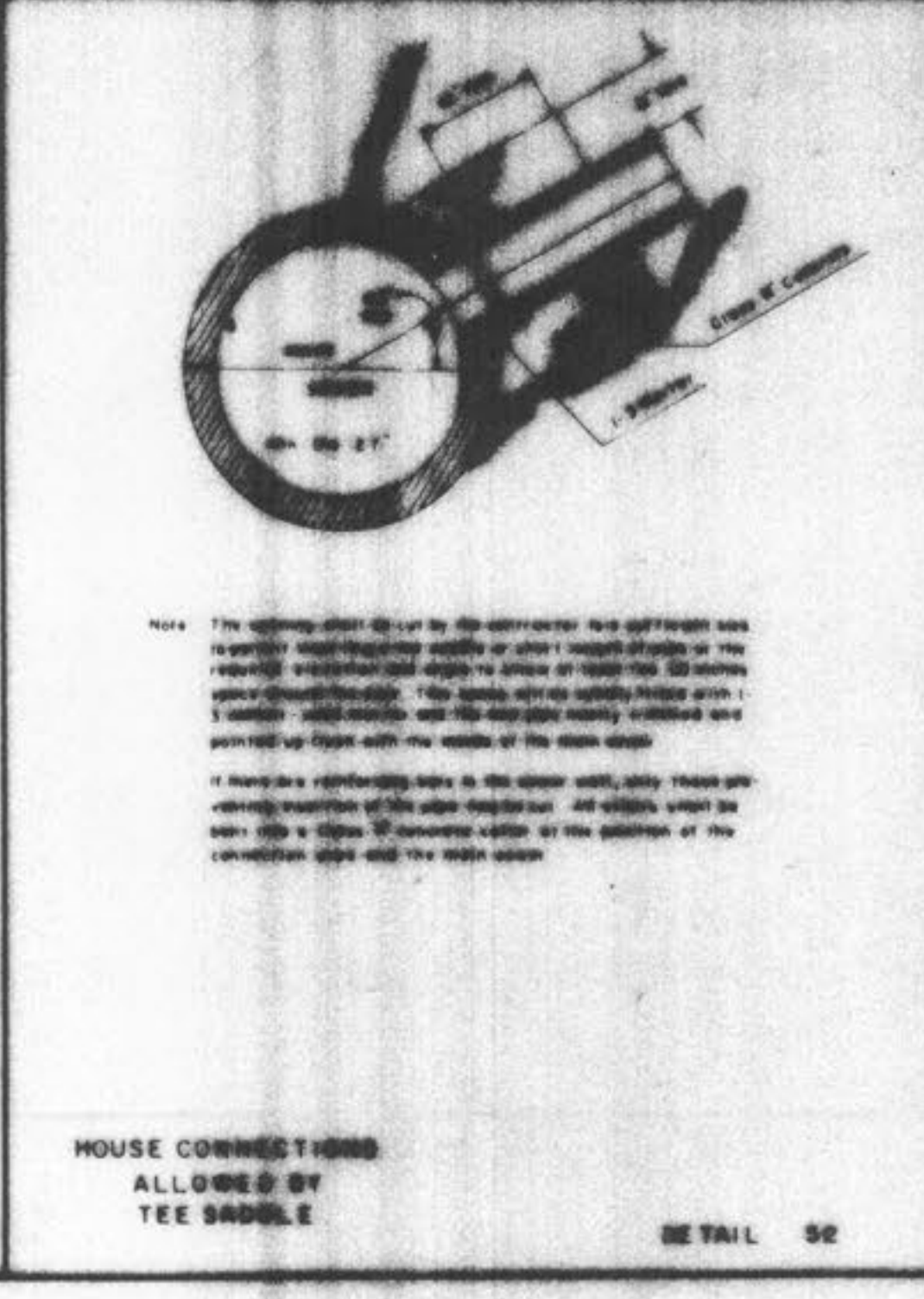
CAST IRON COVERS, MANHOLES AND INLETS



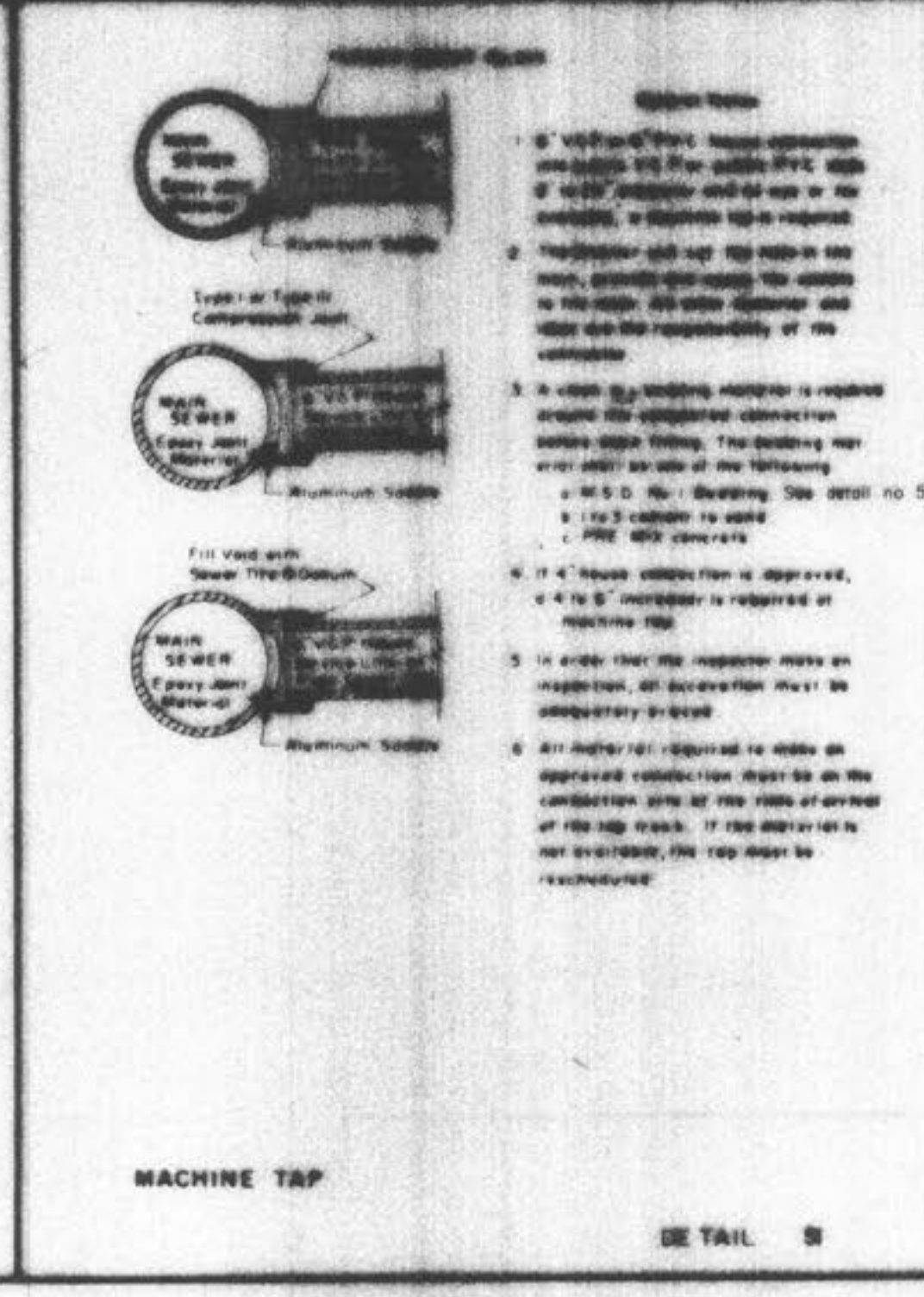
'ROLL-IN' FOR EXISTING CLAY OR CONCRETE PIPE



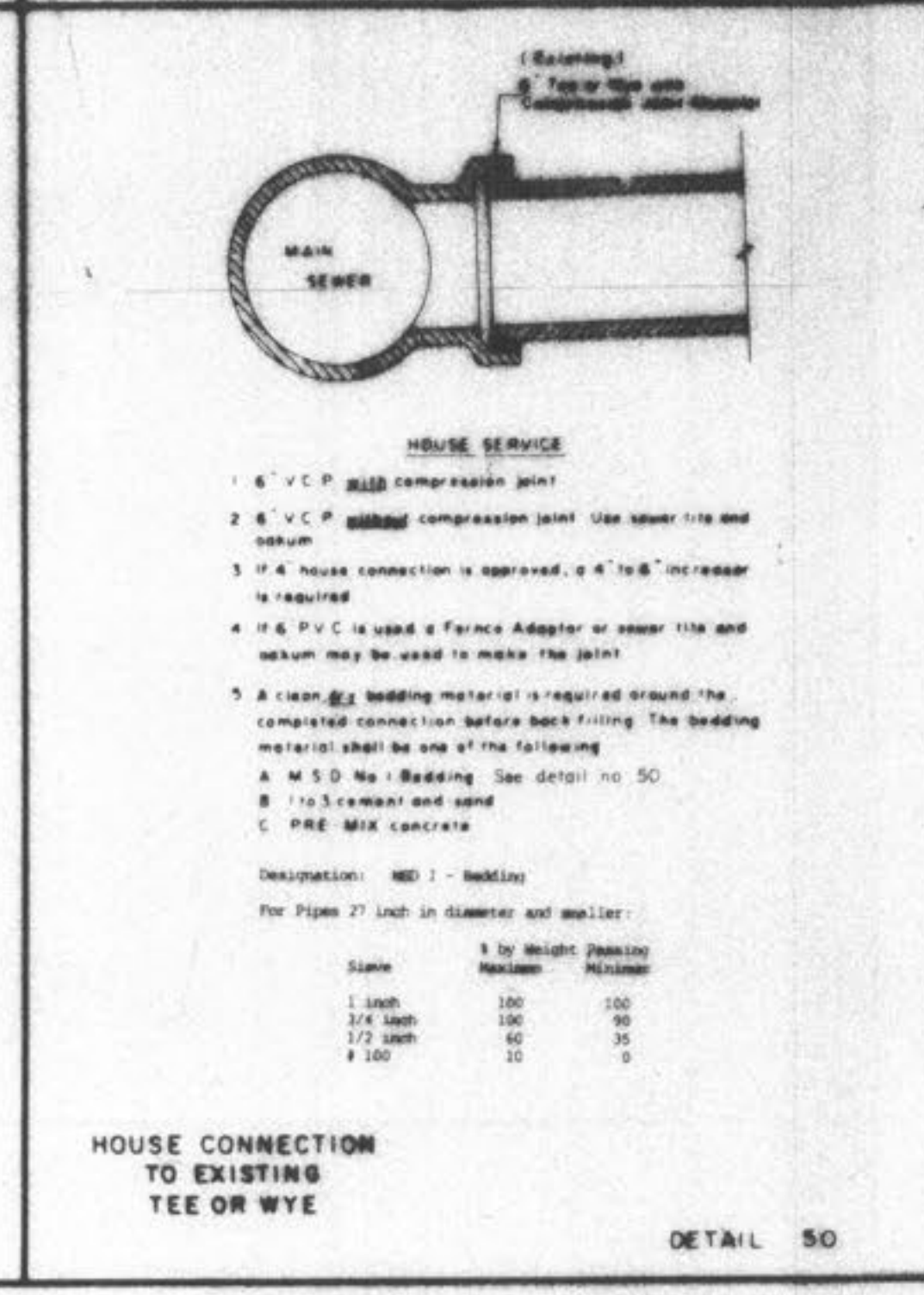
6" (6" LARGER) CONNECTION TO PLASTIC MAIN



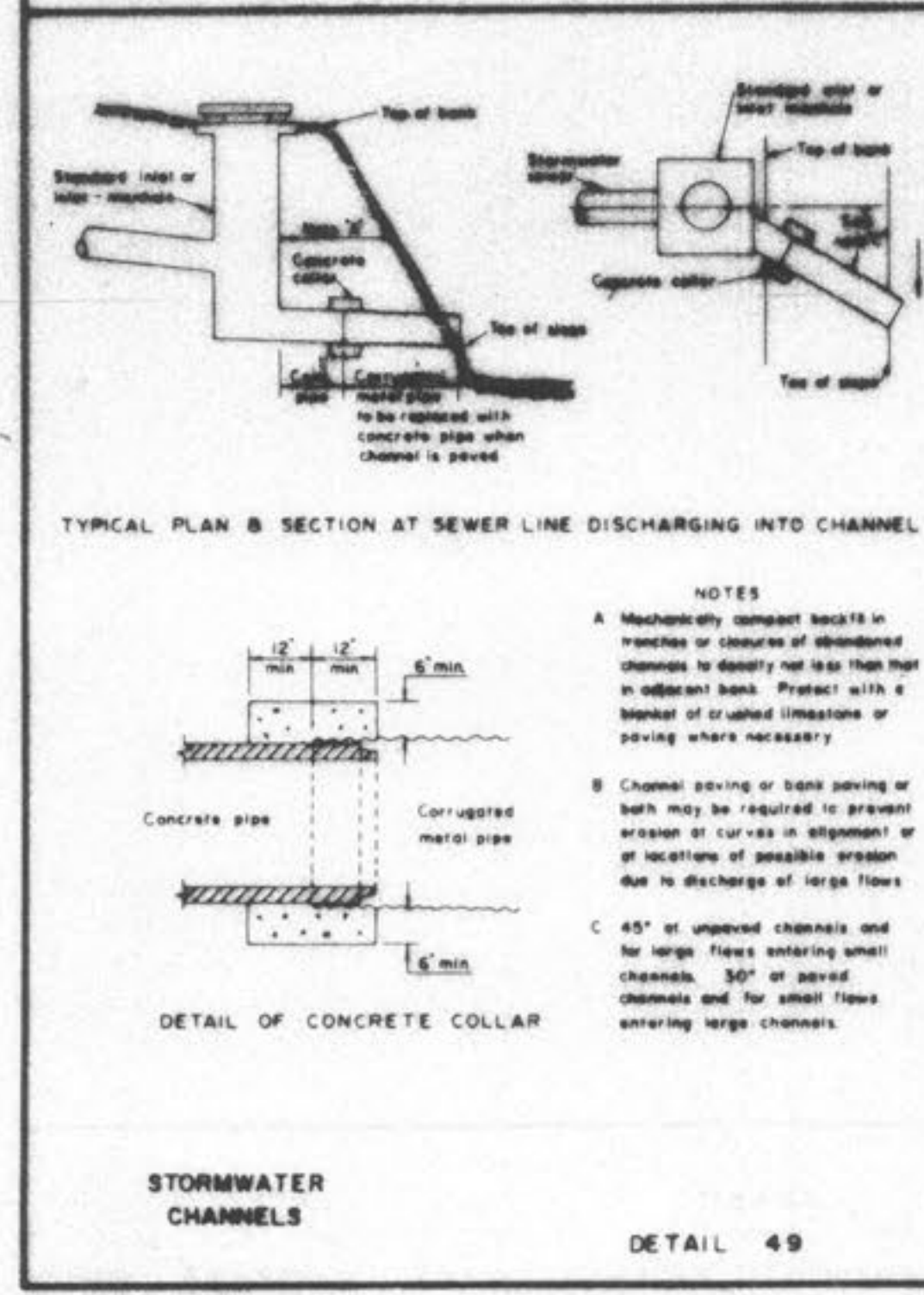
HOUSE CONNECTIONS ALLOWED BY TEE SADDLE



MACHINE TAP



HOUSE CONNECTION TO EXISTING TEE OR WYE



STORMWATER CHANNELS