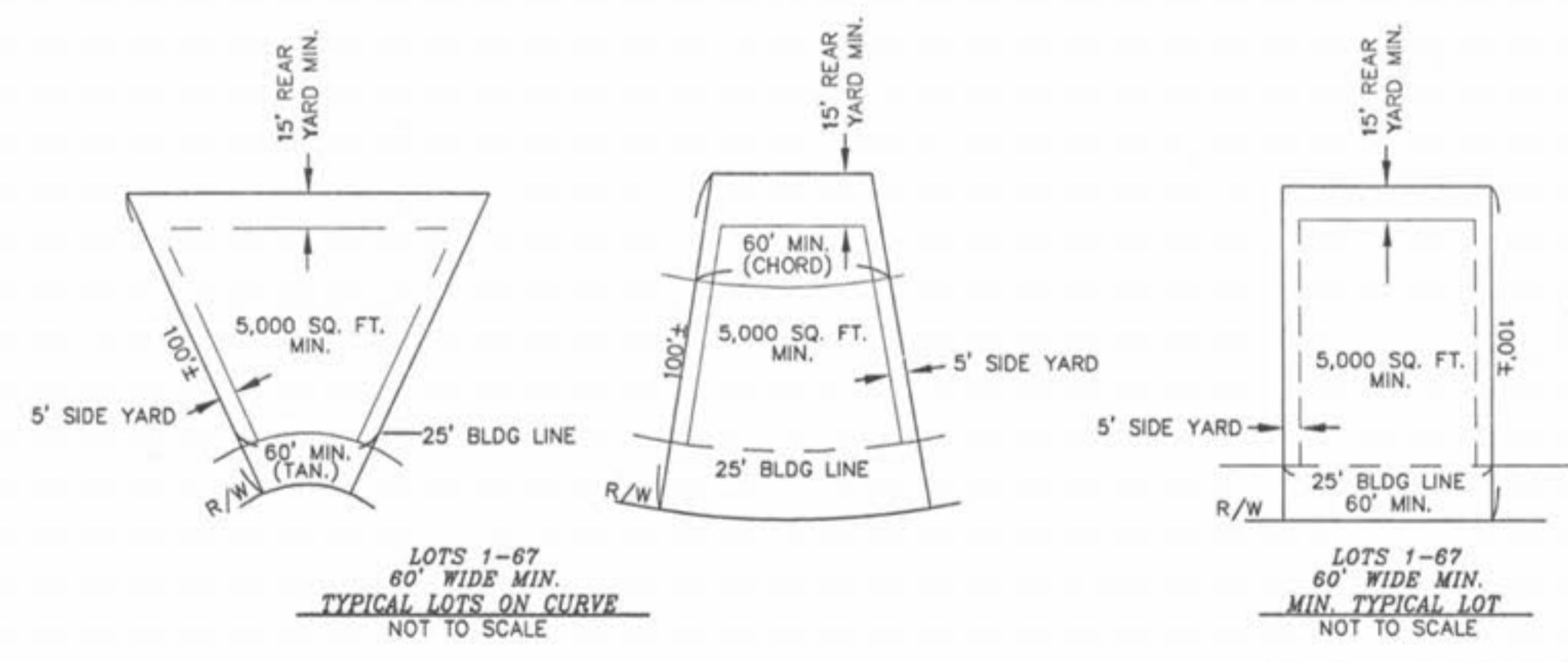
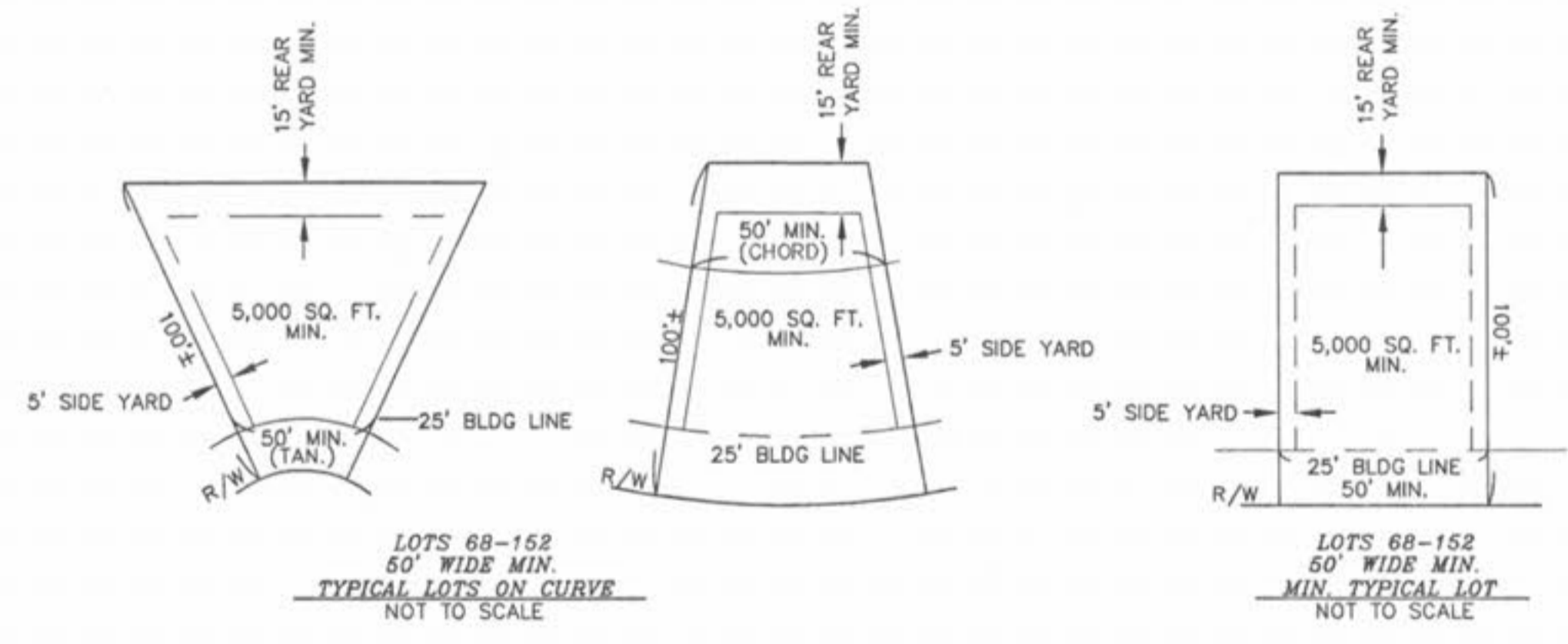
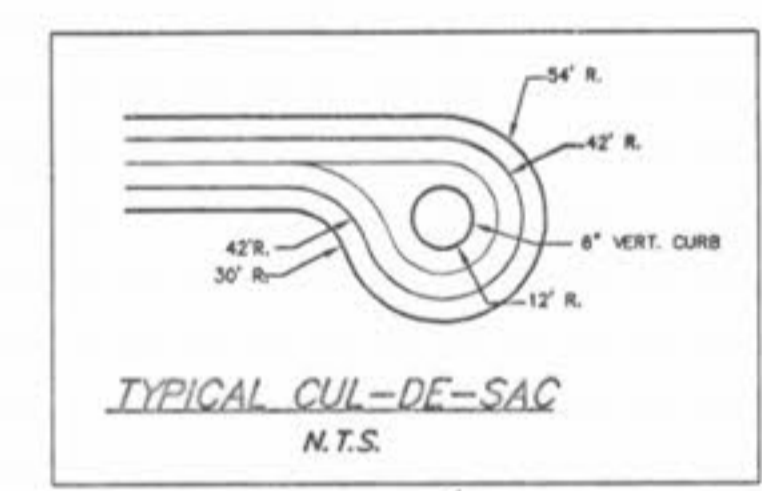
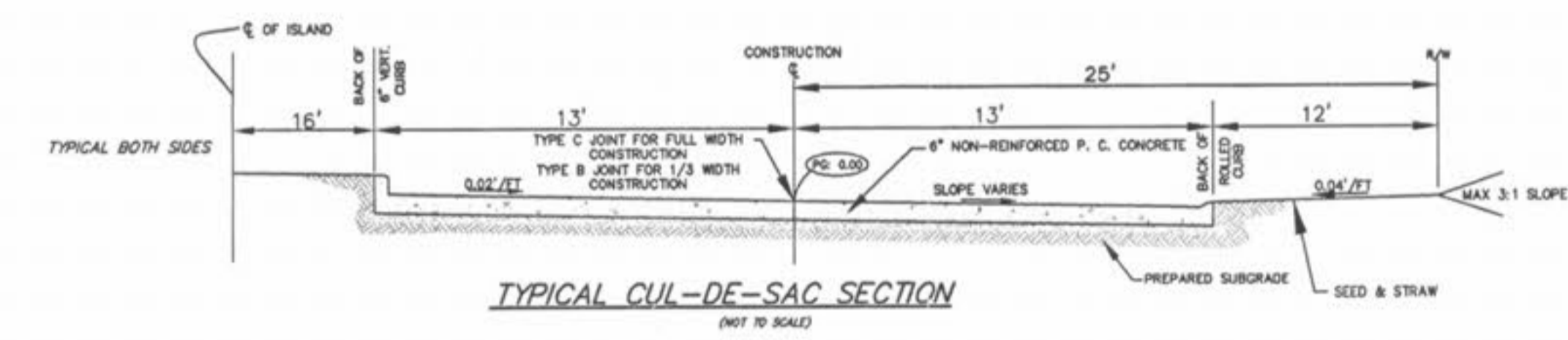
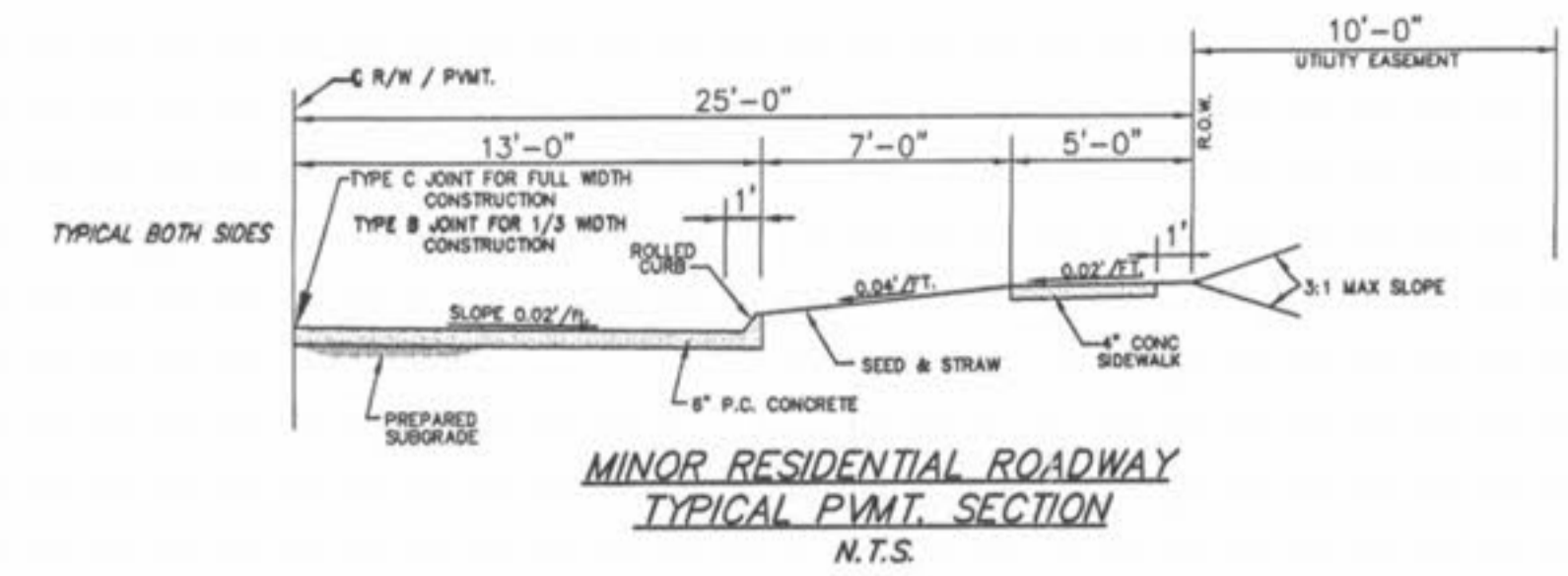
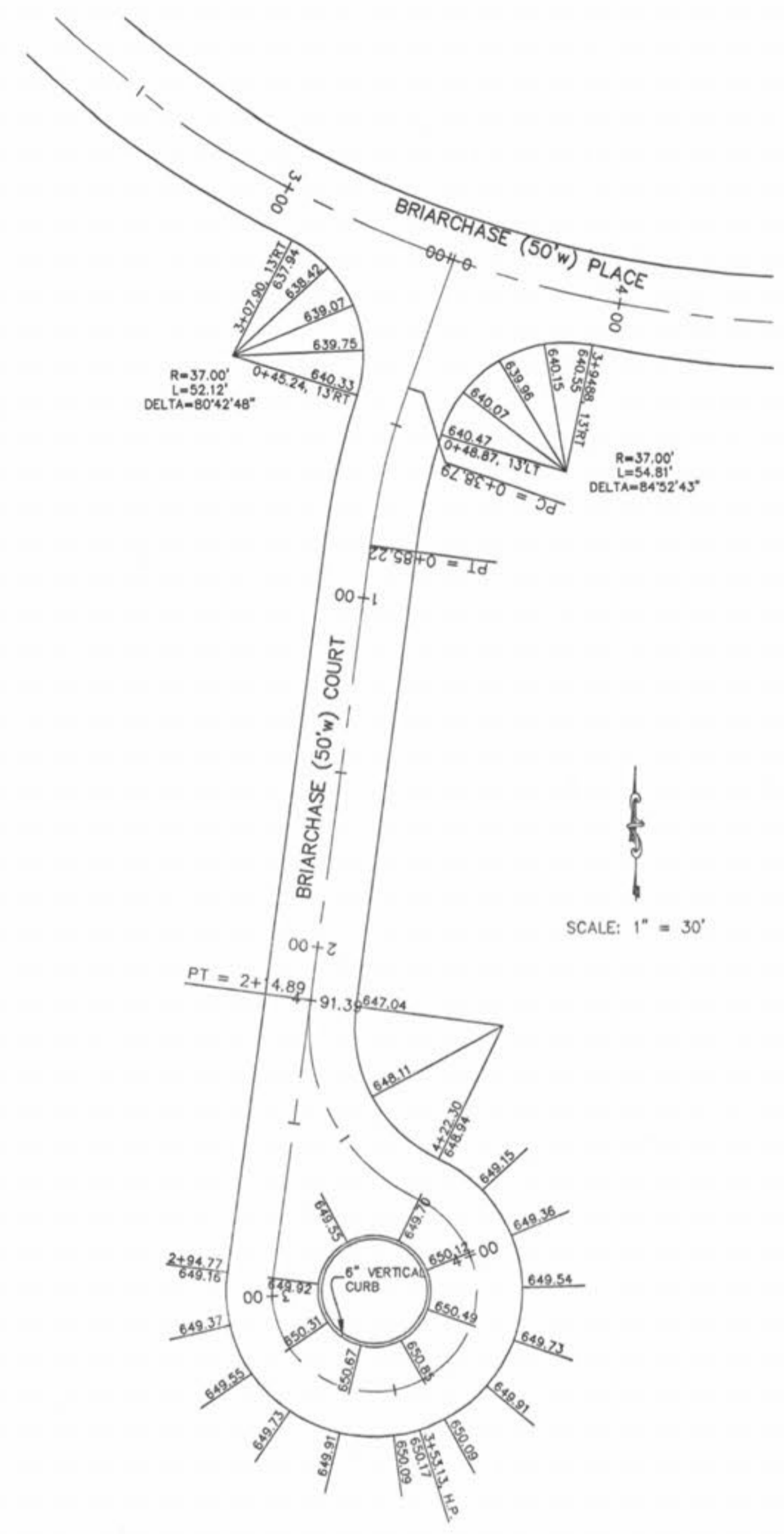
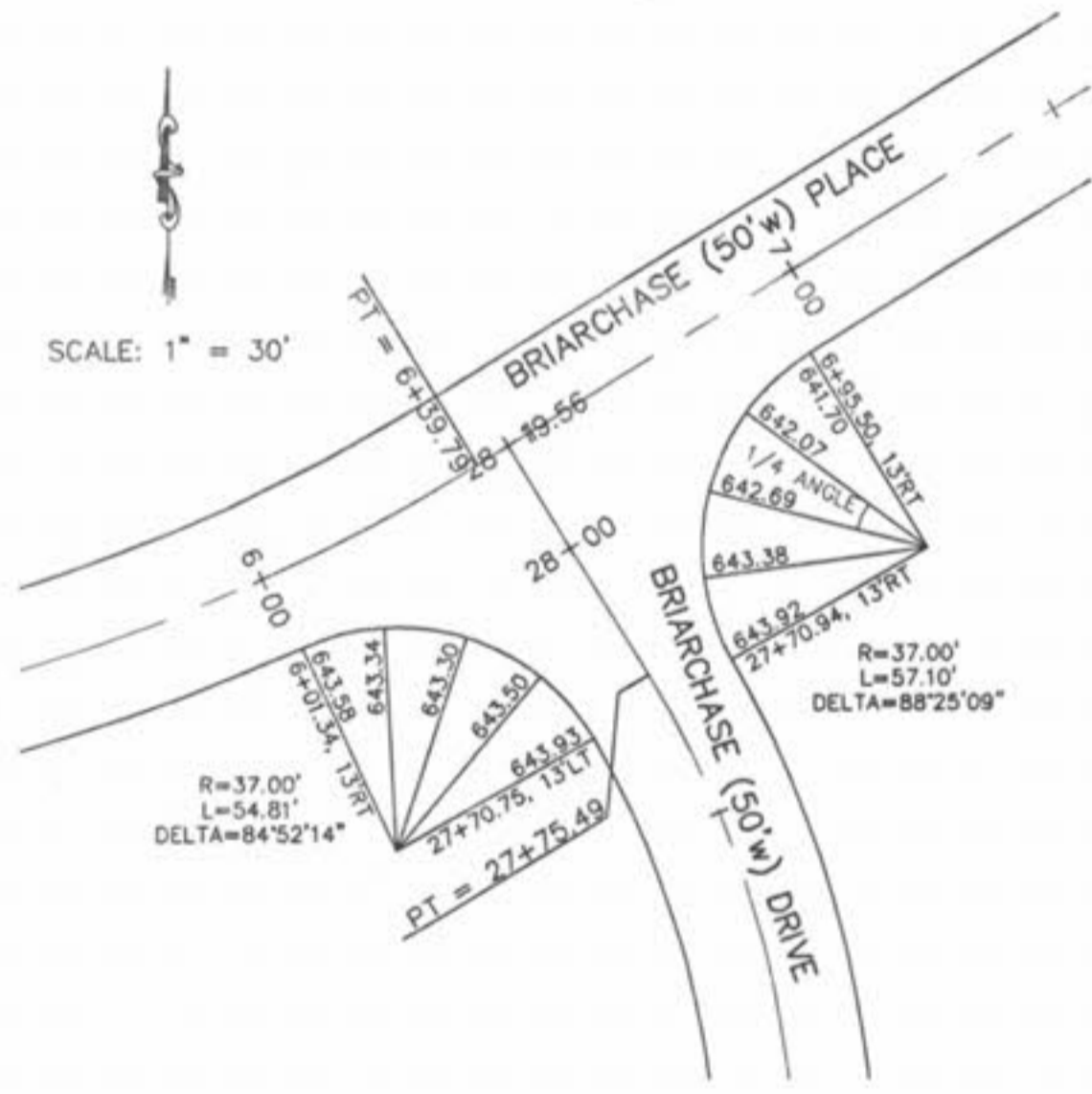
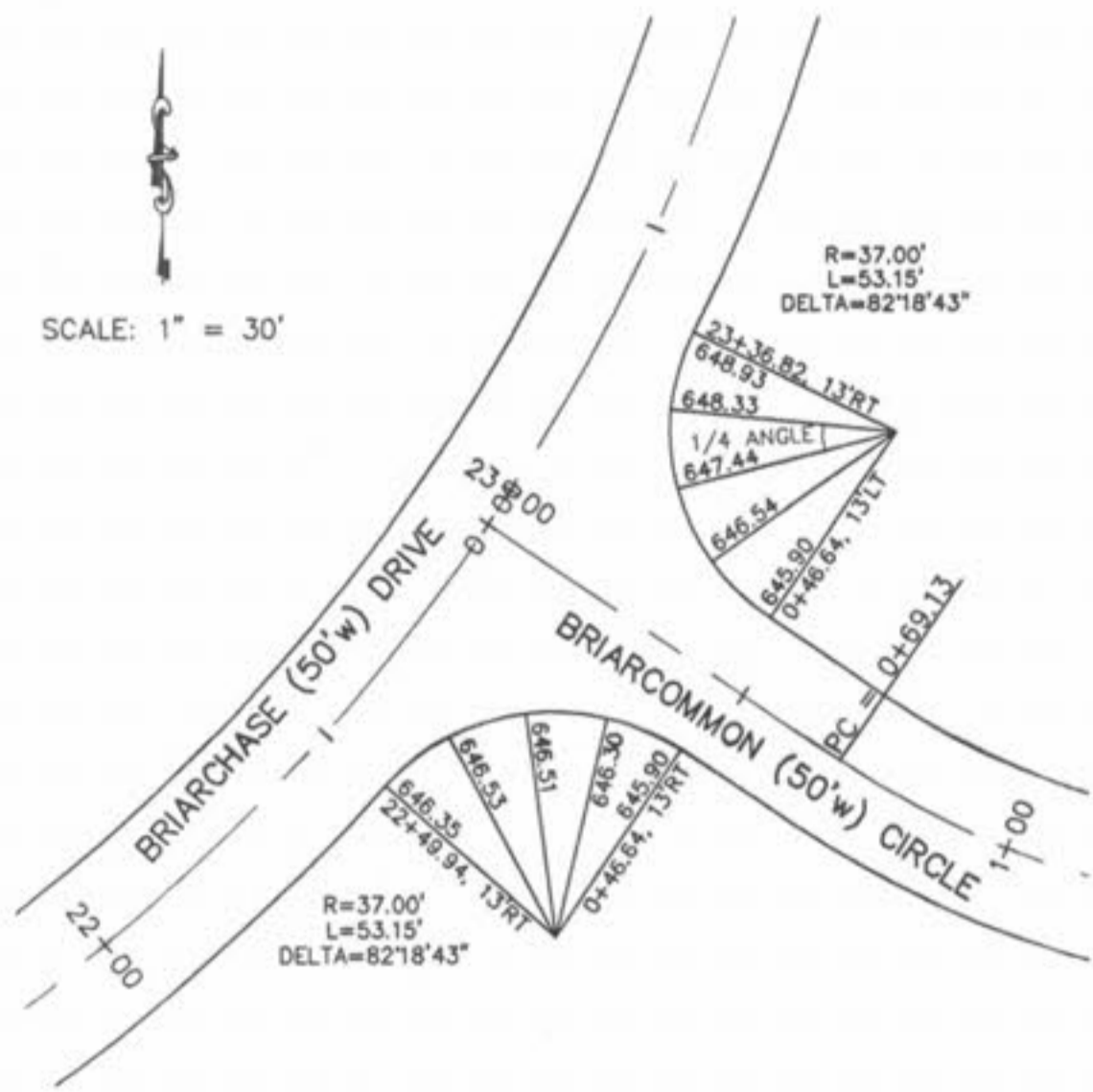


Drawing name: K:\D\0203043 HWY N (McBride)\IMPROVEMENTS 02-26-03\3043_warb.dwg Plotted on: Nov 19, 2004 - 11:03am Plotted by: juetkenhaus



THE UNDERGROUND UTILITIES SHOWN HEREON WERE PLOTTED FROM AVAILABLE INFORMATION AND DO NOT NECESSARILY REFLECT THE ACTUAL EXISTENCE, NONEXISTENCE, SIZE, TYPE, NUMBER OR LOCATION OF THESE OR OTHER UTILITIES. THE GENERAL CONTRACTOR SHALL BE RESPONSIBLE FOR VERIFYING THE ACTUAL LOCATION OF ALL UNDERGROUND UTILITIES, SHOWN OR NOT SHOWN, AND SAID UTILITIES SHALL BE LOCATED IN THE FIELD PRIOR TO ANY GRADING, EXCAVATION OR CONSTRUCTION OF IMPROVEMENTS. THESE PROVISIONS SHALL IN NO WAY ABSOLVE ANY PARTY FROM COMPLYING WITH THE UNDERGROUND FACILITY SAFETY AND DAMAGE PREVENTION ACT, CHAPTER 319, RSMo

ISSUE	REMARKS/DATE
1	05-14-03 1st Submittal
2	06-24-03 City of O'Fallon Comments
3	07-15-03 City of O'Fallon Comments
4	11-19-04 Client Comments

PREPARED FOR:
McBride & Son Homes, Inc.
#1 McBride & Son Center Drive
Chesterfield, Missouri 63005
(636) 537-2000

PREPARED BY:
THE STERLING CO.
ENGINEERS & SURVEYORS
5055 NEW BAUMGARTNER ROAD
ST. LOUIS, MISSOURI 63129
(314)-487-0440 FAX 487-8944
E-Mail: Sterling@sterling-eng-sur.com

PROJECT:	DESIGNED		CHECKED:
	DRAWN:		
NO.	02 03 043		SHEET
	M.S.D.		
P#	CD7		OF
	DIGITAL FILE LOCATION		
SHEET TITLE: BRIARCHASE PHASE TWO WARPING DETAILS			