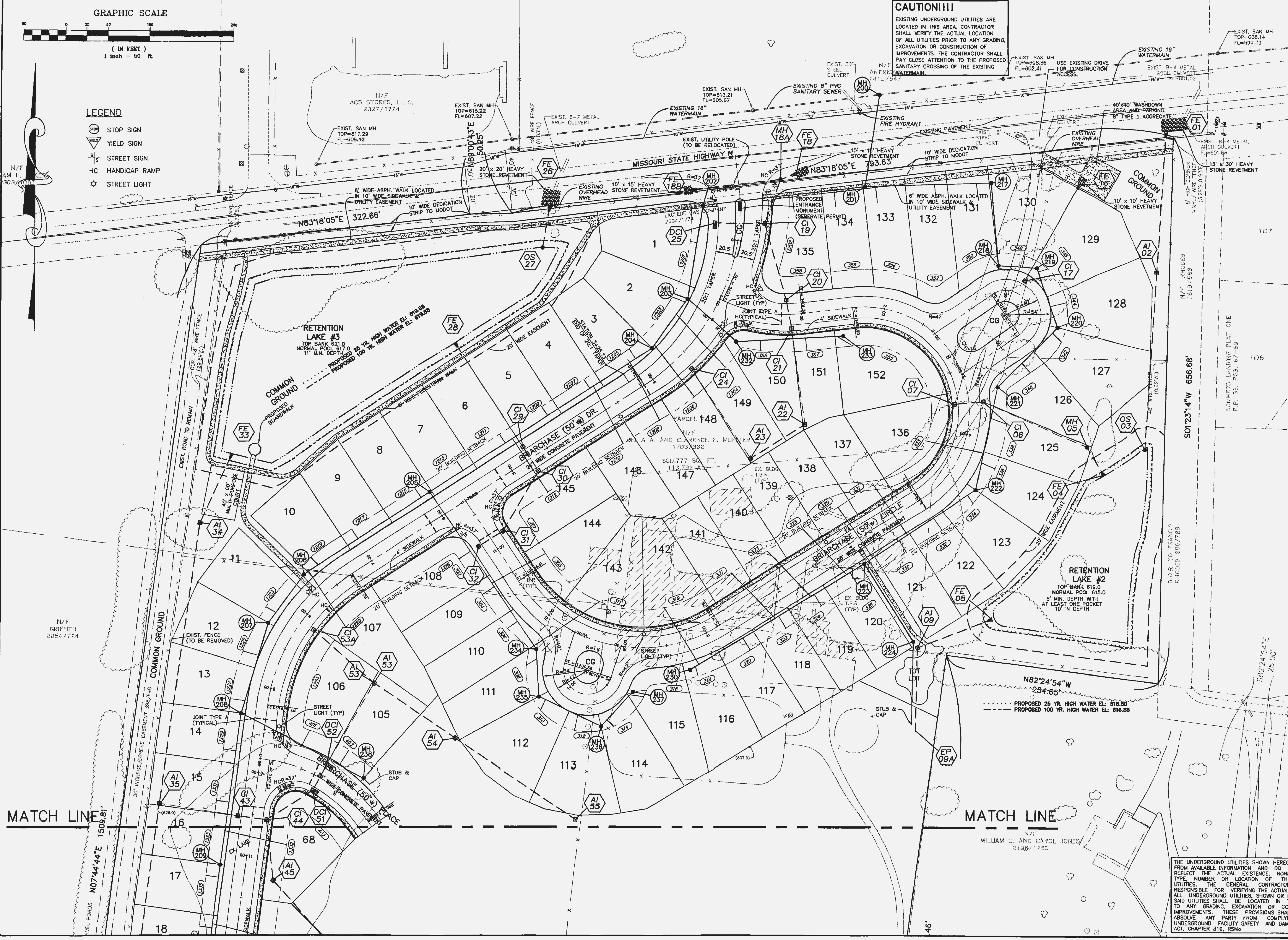


**LEGEND**

- STOP SIGN
- YIELD SIGN
- STREET SIGN
- HANDICAP RAMP
- STREET LIGHT

**CAUTION!!!!**  
 EXISTING UNDERGROUND UTILITIES ARE LOCATED IN THIS AREA. CONTRACTOR SHALL VERIFY THE ACTUAL LOCATION OF ALL UTILITIES PRIOR TO ANY GRADING, EXCAVATION OR CONSTRUCTION OF IMPROVEMENTS. THE CONTRACTOR SHALL PAY CLOSE ATTENTION TO THE PROPOSED SANITARY CROSSING OF THE EXISTING WATERMAIN.

Drawing name: K:\D\203043 HWY N (McBride)\IMPROVEMENTS 02-26-03\3043imp.dwg Plotted on: Apr 17, 2003 12:59pm Plotted by: ramold



THE UNDERGROUND UTILITIES SHOWN HEREON WERE PLACED FROM AVAILABLE INFORMATION AND DO NOT NECESSARILY REFLECT THE ACTUAL EXISTENCE, NONEXISTENCE, TYPE, NUMBER OR LOCATION OF THESE OR OTHER UTILITIES. THE CONTRACTOR SHALL BE RESPONSIBLE FOR VERIFYING THE ACTUAL LOCATION OF ALL UNDERGROUND UTILITIES, SHOWN OR NOT SHOWN, SAID UTILITIES SHALL BE LOCATED IN THE FIELD PRIOR TO ANY GRADING, EXCAVATION OR CONSTRUCTION IMPROVEMENTS. THESE PROVISIONS SHALL IN NO WAY ABSOLVE ANY PARTY FROM COMPLYING WITH UNDERGROUND FACILITY SAFETY AND DAMAGE PREVENTION ACT, CHAPTER 319, RSMo.