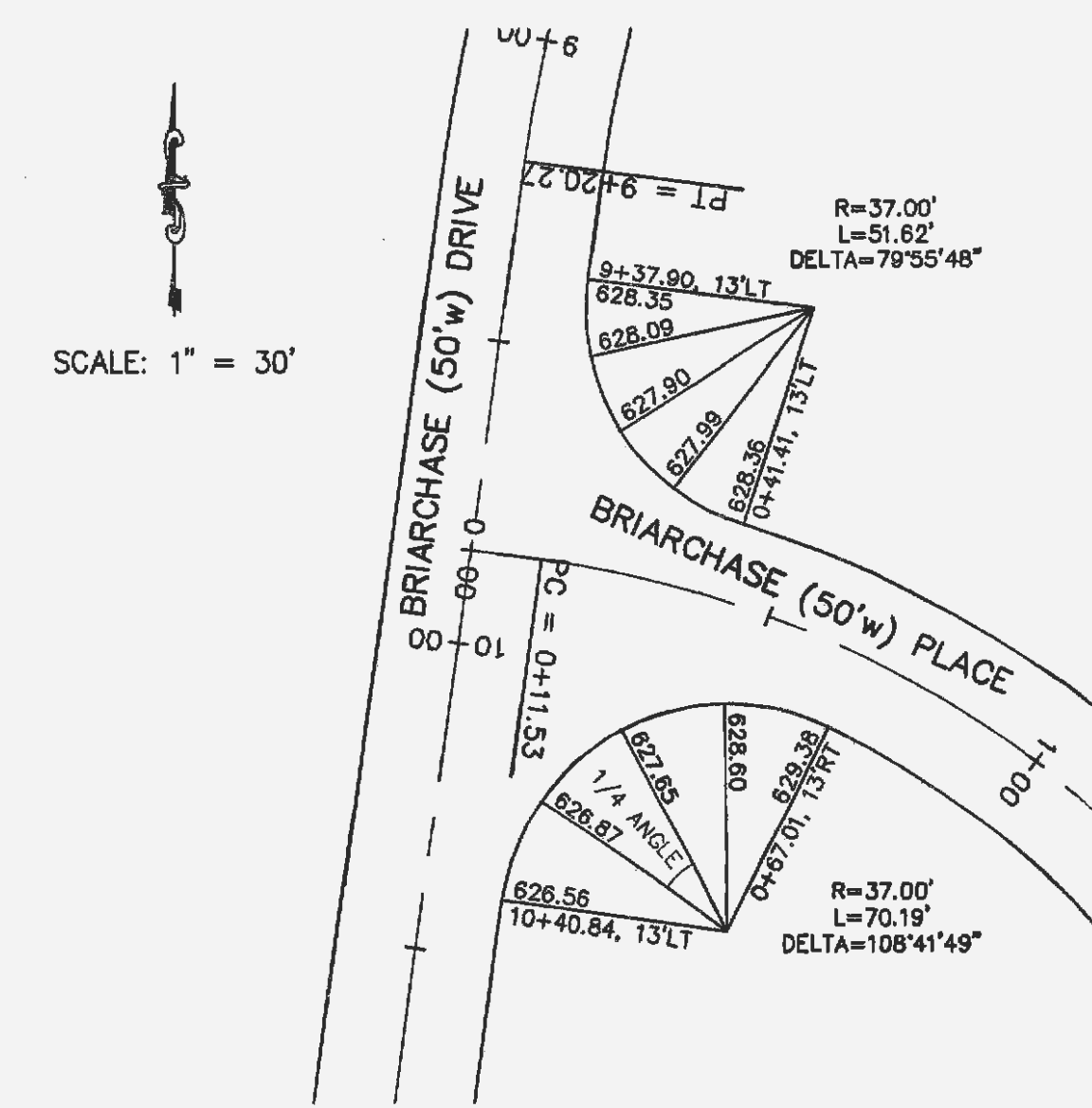
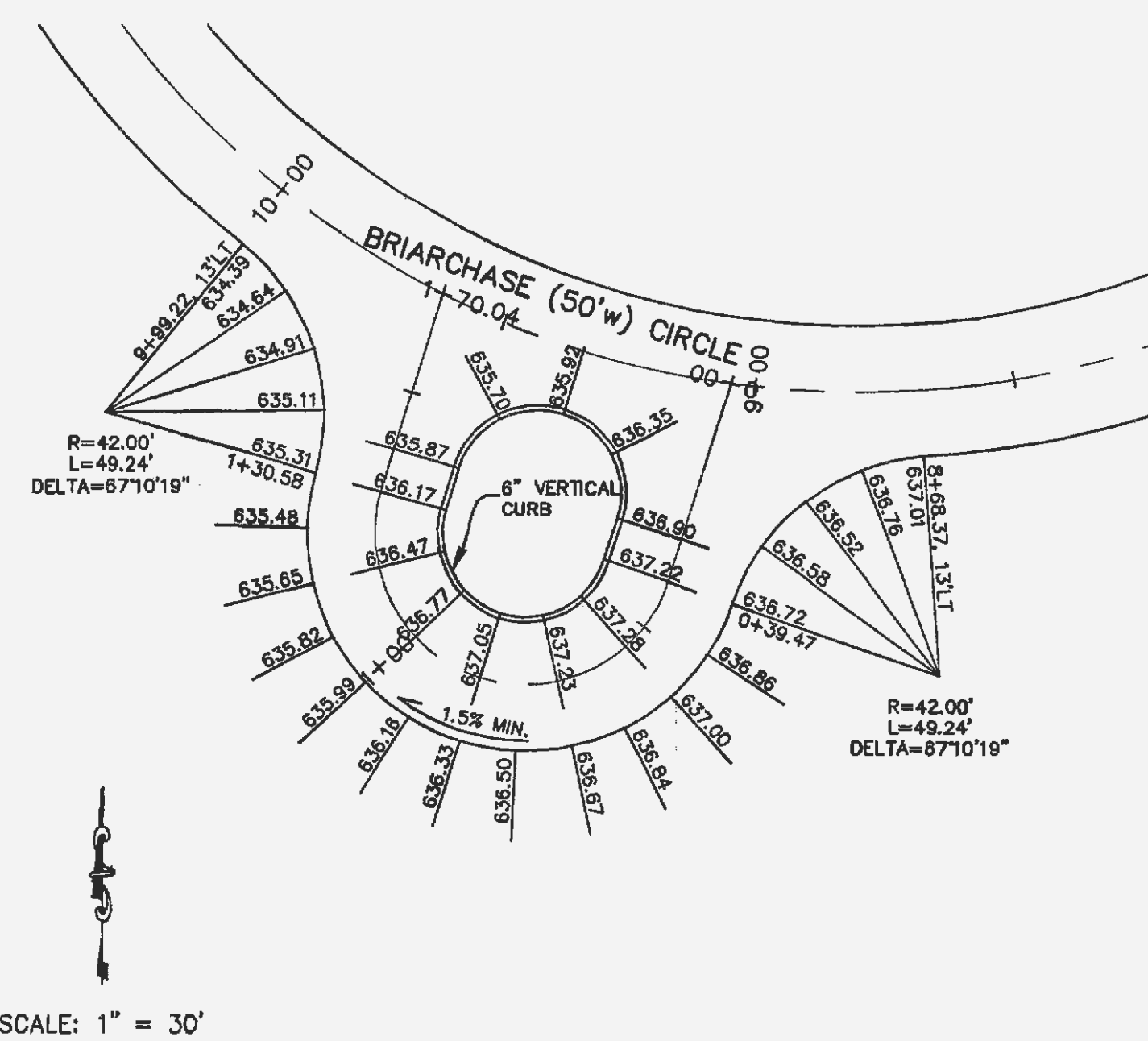
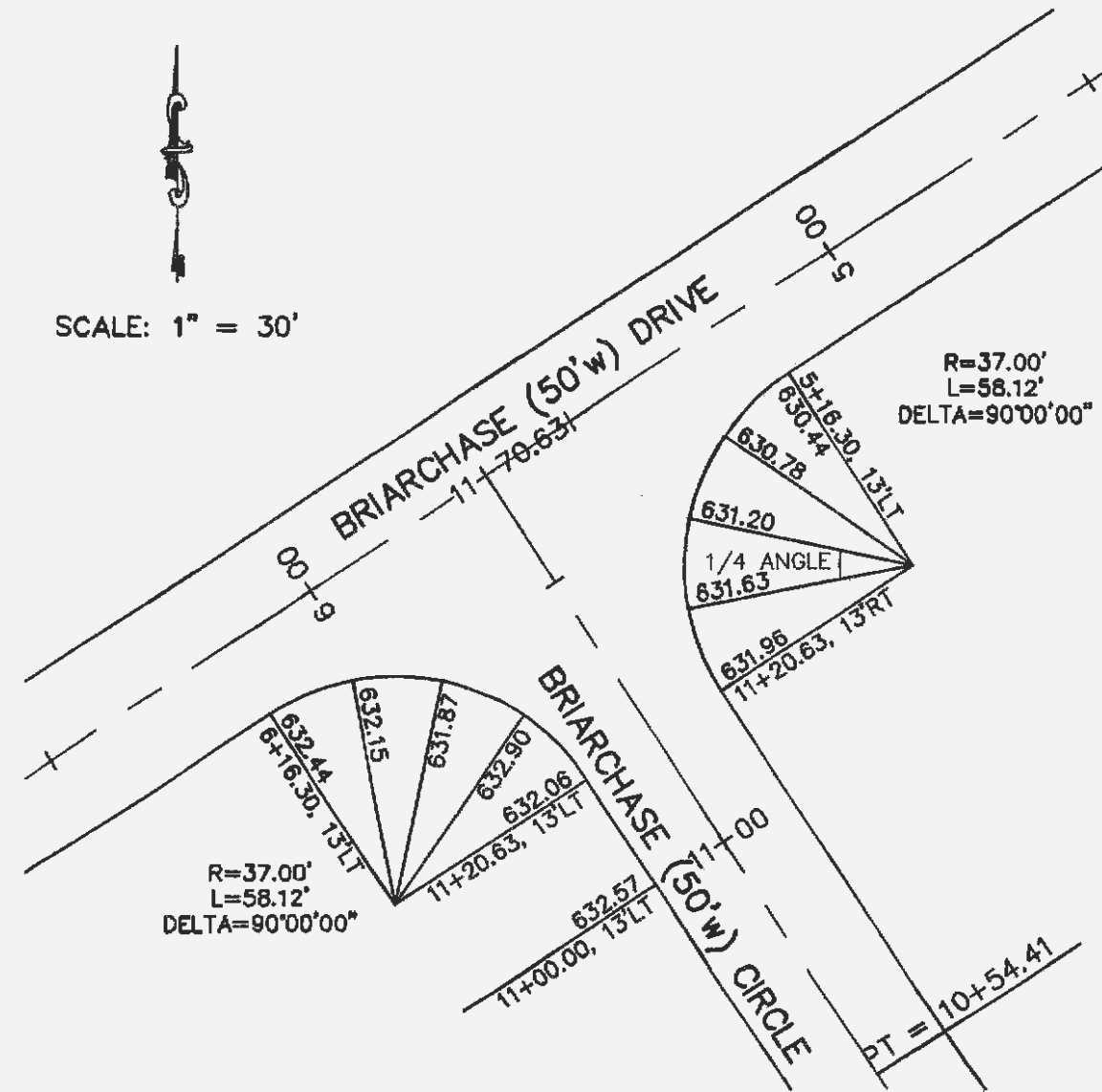
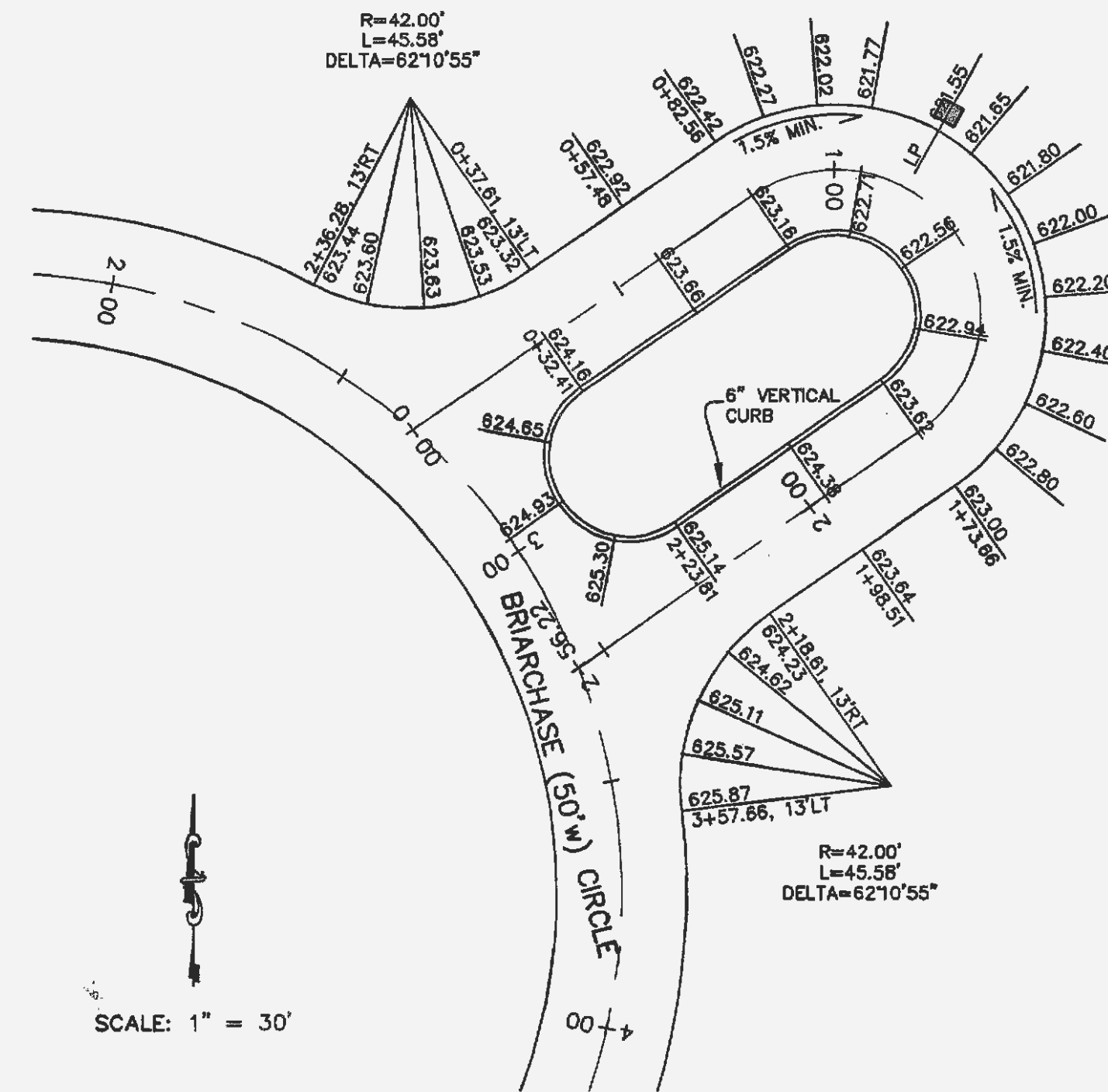
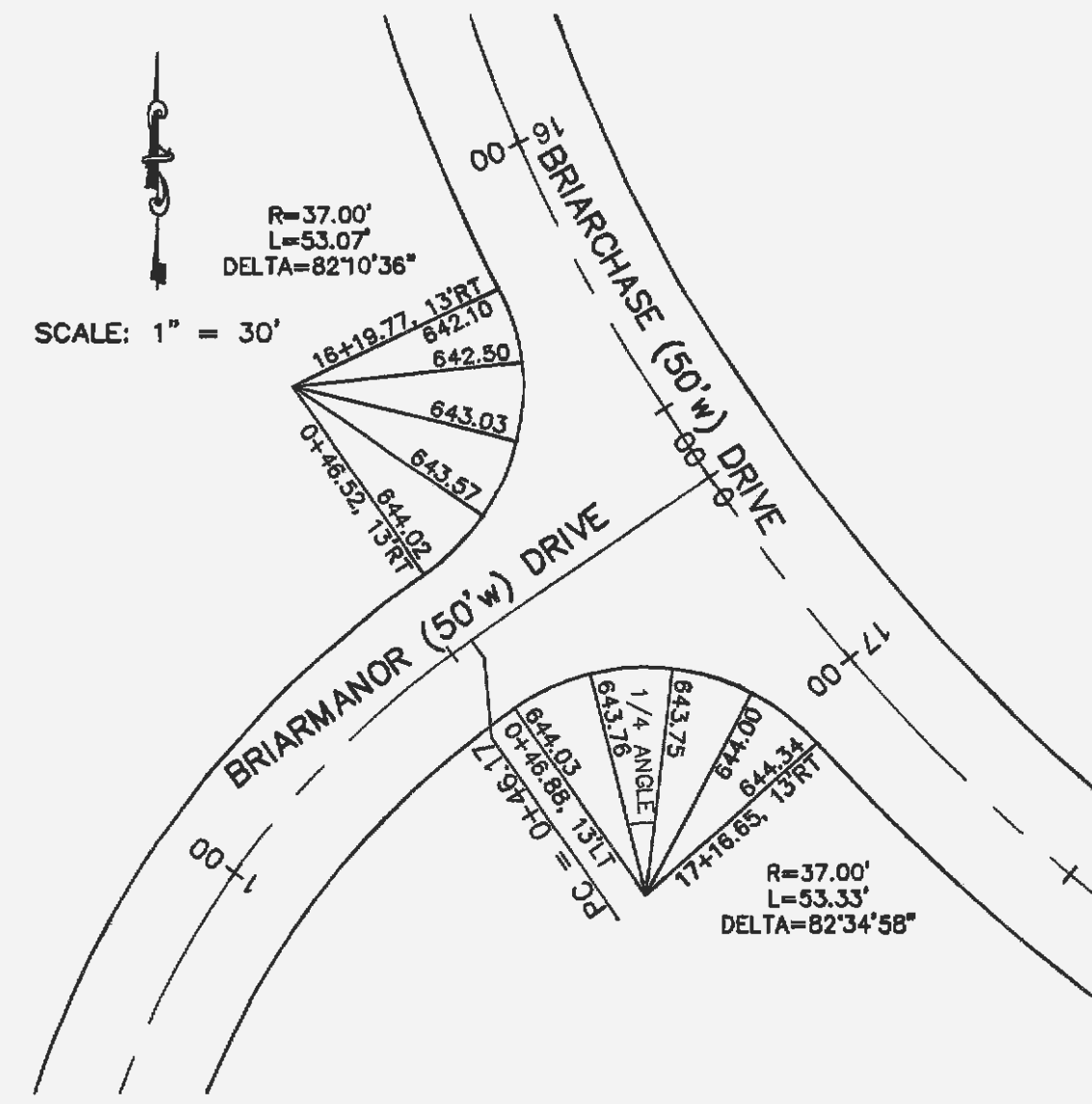
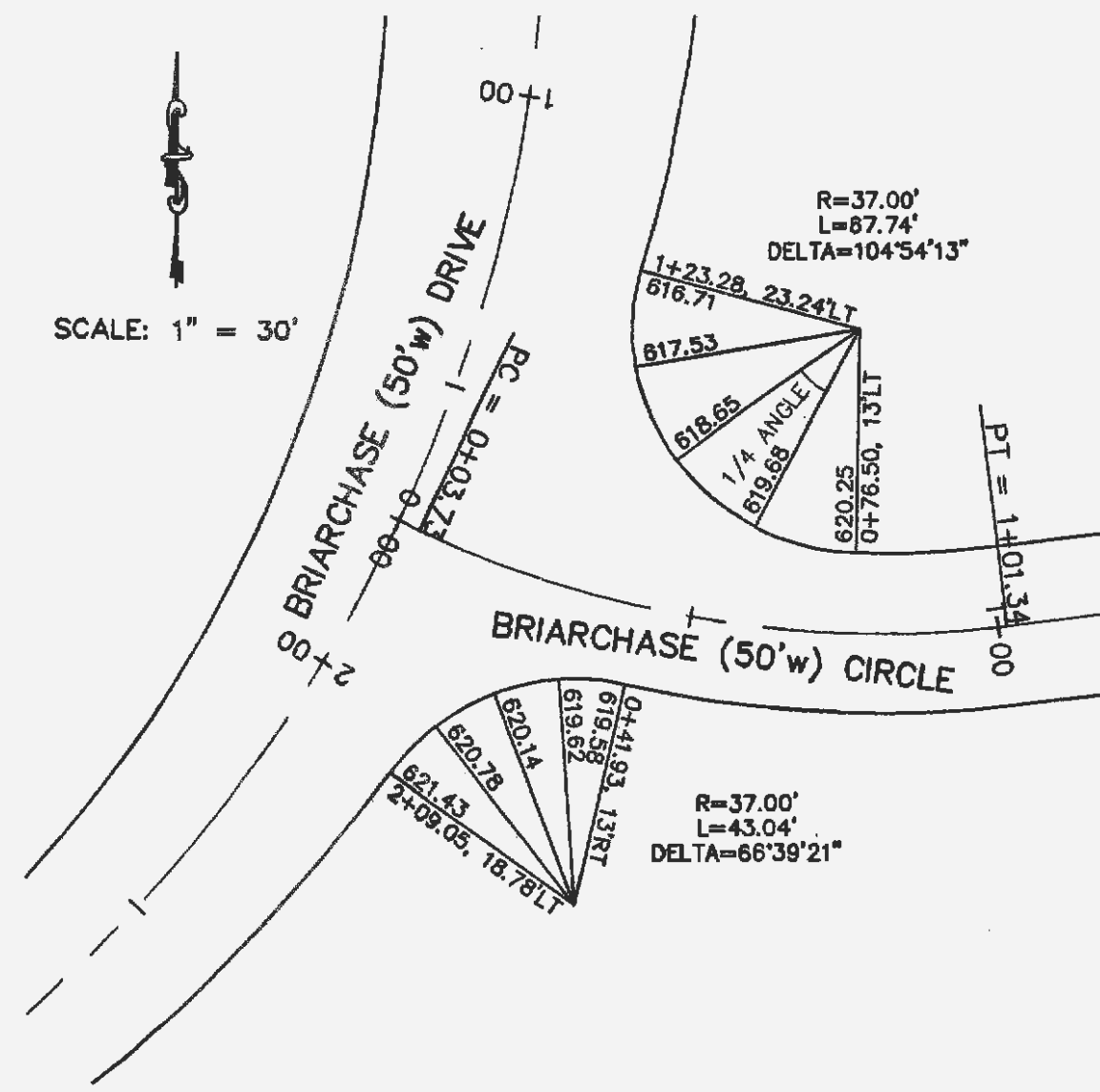


Drawing name: K:\D\0203043 HWY N (McBride)\IMPROVEMENTS 02-26-03\3043warp.dwg Plotted on: Feb 26, 2003 - 1:16pm Plotted by: Juetkenhaus



THE UNDERGROUND UTILITIES SHOWN HEREON WERE PLOTTED FROM AVAILABLE INFORMATION AND DO NOT NECESSARILY REFLECT THE ACTUAL EXISTENCE, NONEXISTENCE, SIZE, TYPE, NUMBER OR LOCATION OF THESE OR OTHER UTILITIES. THE GENERAL CONTRACTOR SHALL BE RESPONSIBLE FOR VERIFYING THE ACTUAL LOCATION OF ALL UNDERGROUND UTILITIES, SHOWN OR NOT SHOWN, AND SAID UTILITIES SHALL BE LOCATED IN THE FIELD PRIOR TO ANY GRADING, EXCAVATION OR CONSTRUCTION OF IMPROVEMENTS. THESE PROVISIONS SHALL IN NO WAY ABSOLVE ANY PARTY FROM COMPLYING WITH THE UNDERGROUND FACILITY SAFETY AND DAMAGE PREVENTION ACT, CHAPTER 319, RSMo.

PROJECT: BRIARCHASE

DESIGNED BY: THE STERLING CO.

PREPARED BY: McBride & Son Homes, Inc.

NO. 02

M.S.D.

P#

DRAWN BY:

ISSUE REMARKS/DATE

1	11-14-02 1st Submission
2	02-28-03 Client Revisions