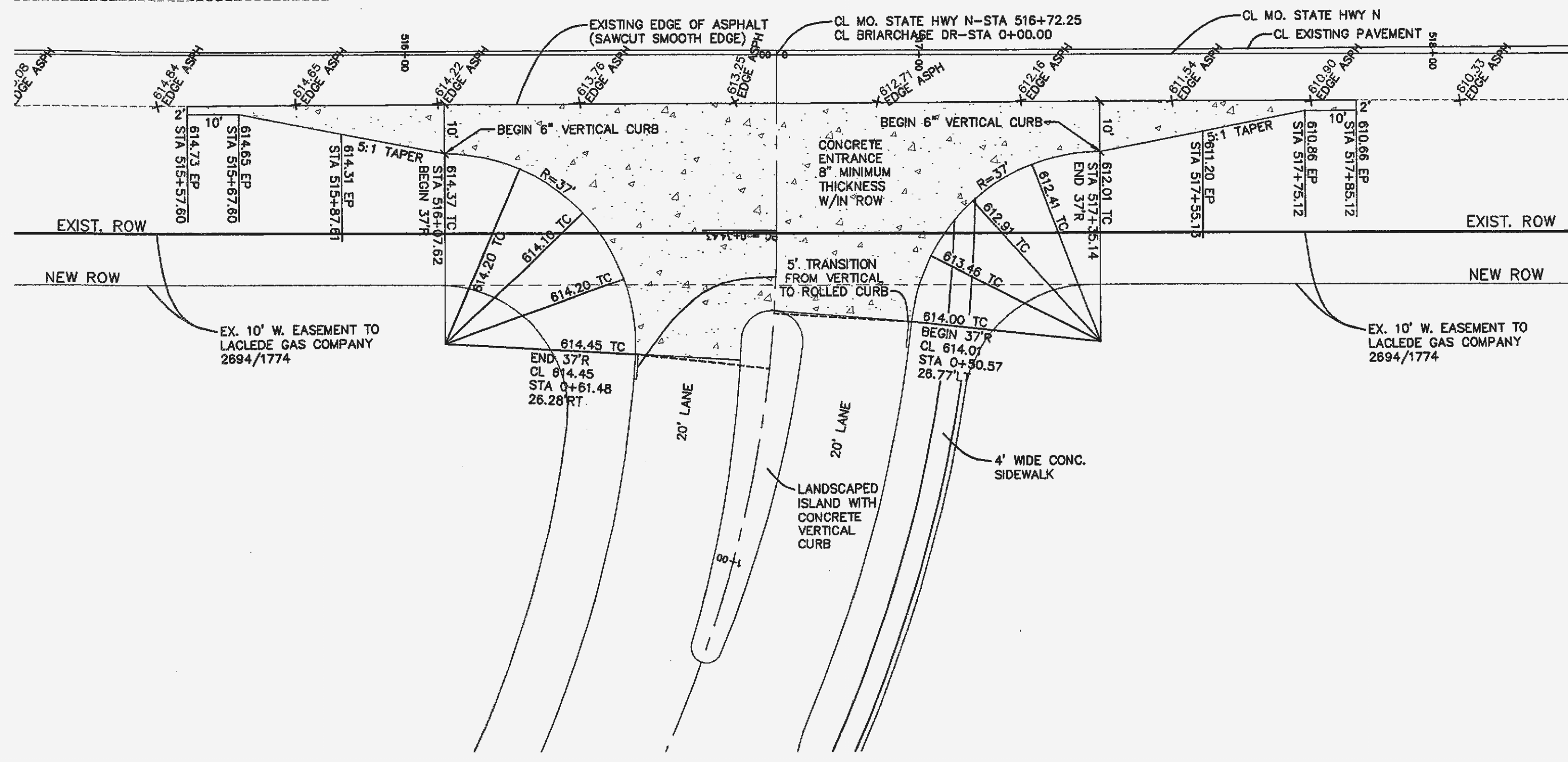
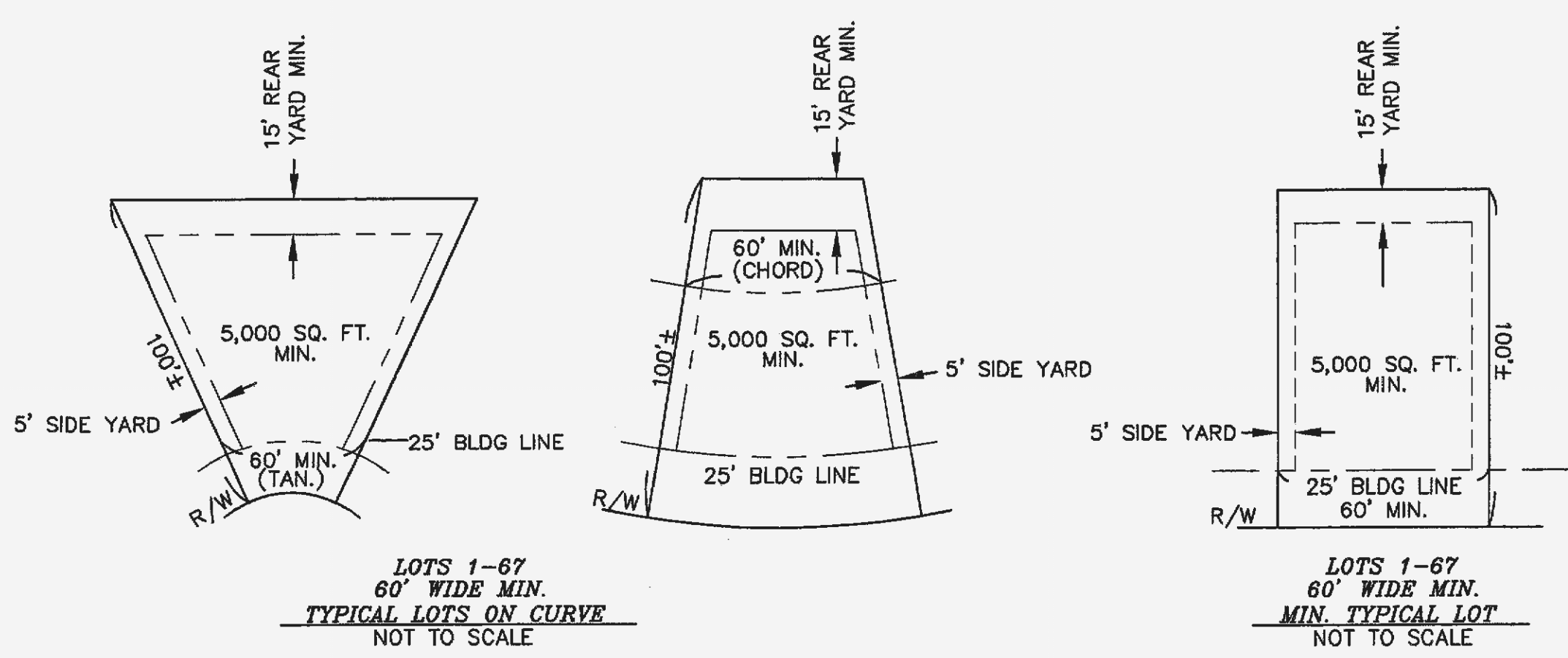
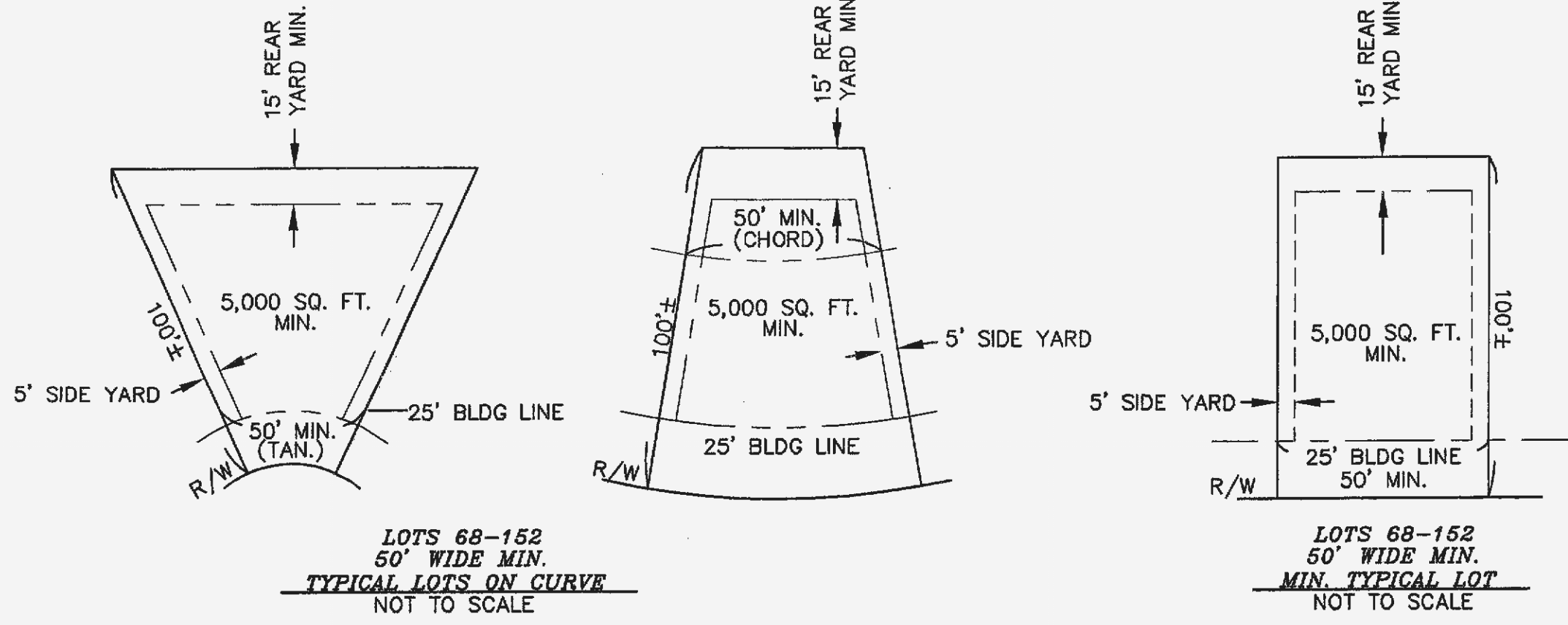
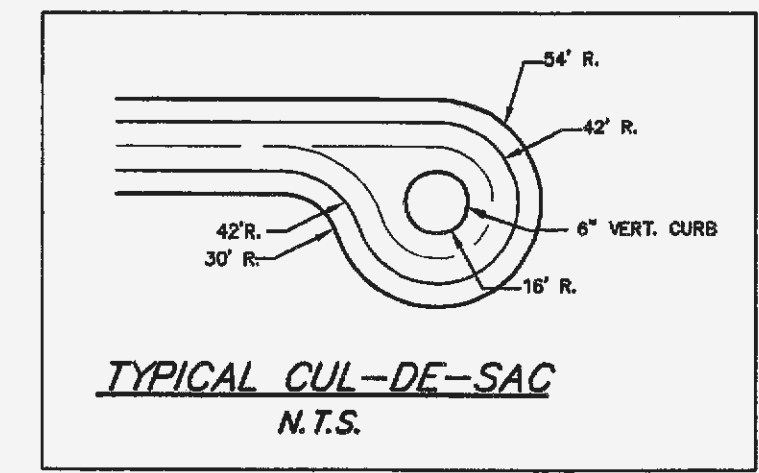
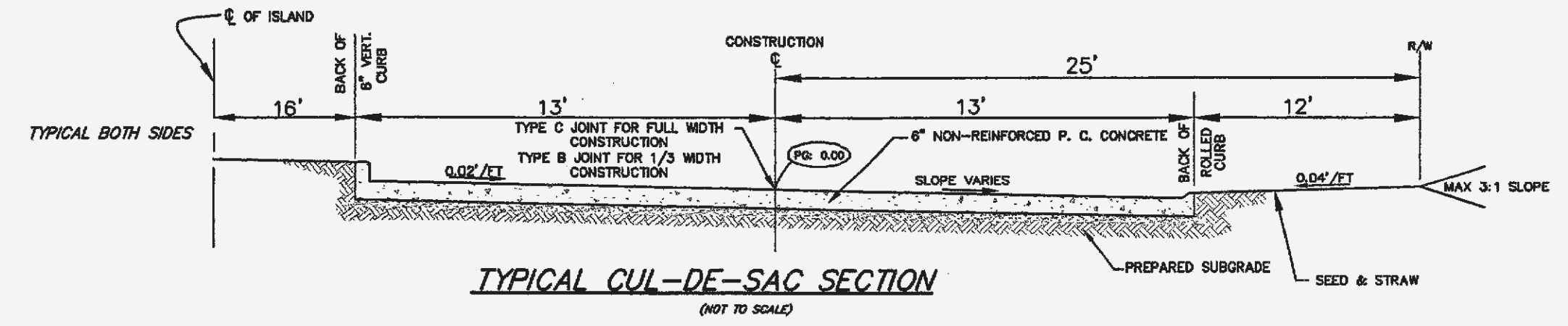
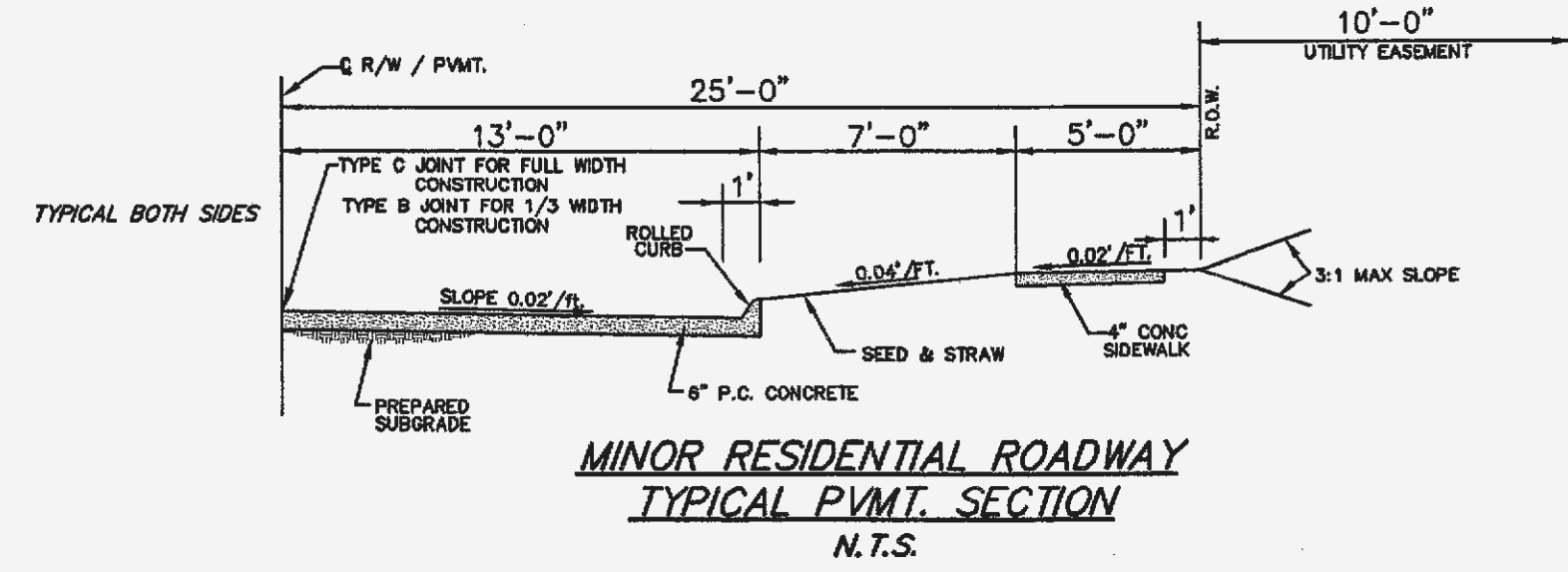


MISSOURI STATE HIGHWAY "N"

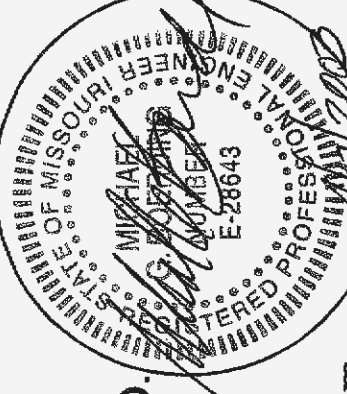


ENTRANCE DETAIL
 SCALE: 1"=20'



ISSUE	REVISIONS
1	11-14-02 RE SUBMITTED
2	02-28-03 Client Revisions

PREPARED FOR:
McBride & Son Homes, Inc.
 #1 McBride & Son Center Drive
 Chesterfield, Missouri 63005
 (636) 537-2000



PREPARED BY:
THE STERLING CO.
 ENGINEERS & SURVEYORS
 5055 NEW BAUMGARTNER ROAD
 ST. LOUIS, MISSOURI 63129
 (314)-487-0440 FAX 487-8944
 E-Mail: Sterling@sterling-eng-sur.com

DRAWN:	RLA
DESIGNED:	RLA
CHECKED:	RLA

PROJECT:
BRIARCHASE

SHEET TITLE:
 ENTRANCE DETAILS

NO.	02	03	043
M.S.D.	SHEET		
P#	CD8		
DIGITAL FILE LOCATION	SERVER-STERLING-2		
DATE	2002-04-24		
OF	01		

K:\D\0203043 HWY N (McBride)\IMPROVEMENTS\3043DETENT.dwg 11/14/2002 01:08:52 PM CST