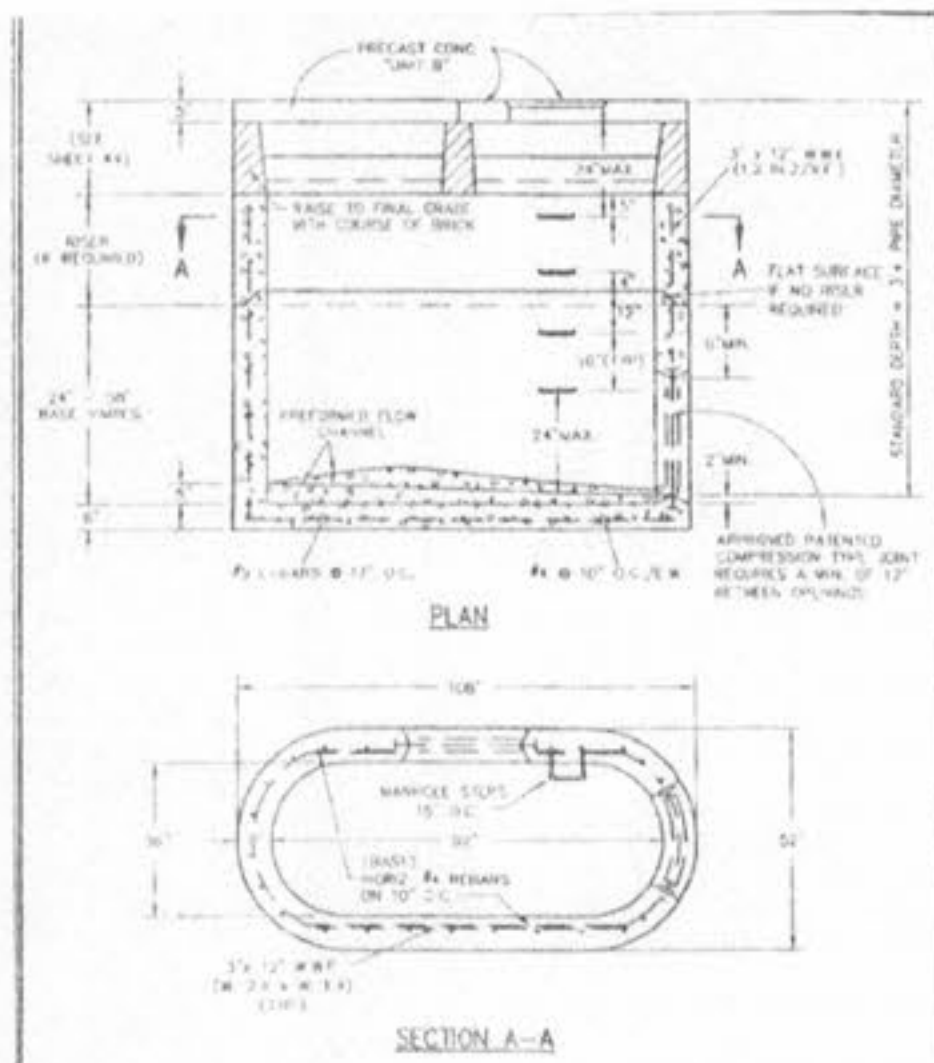
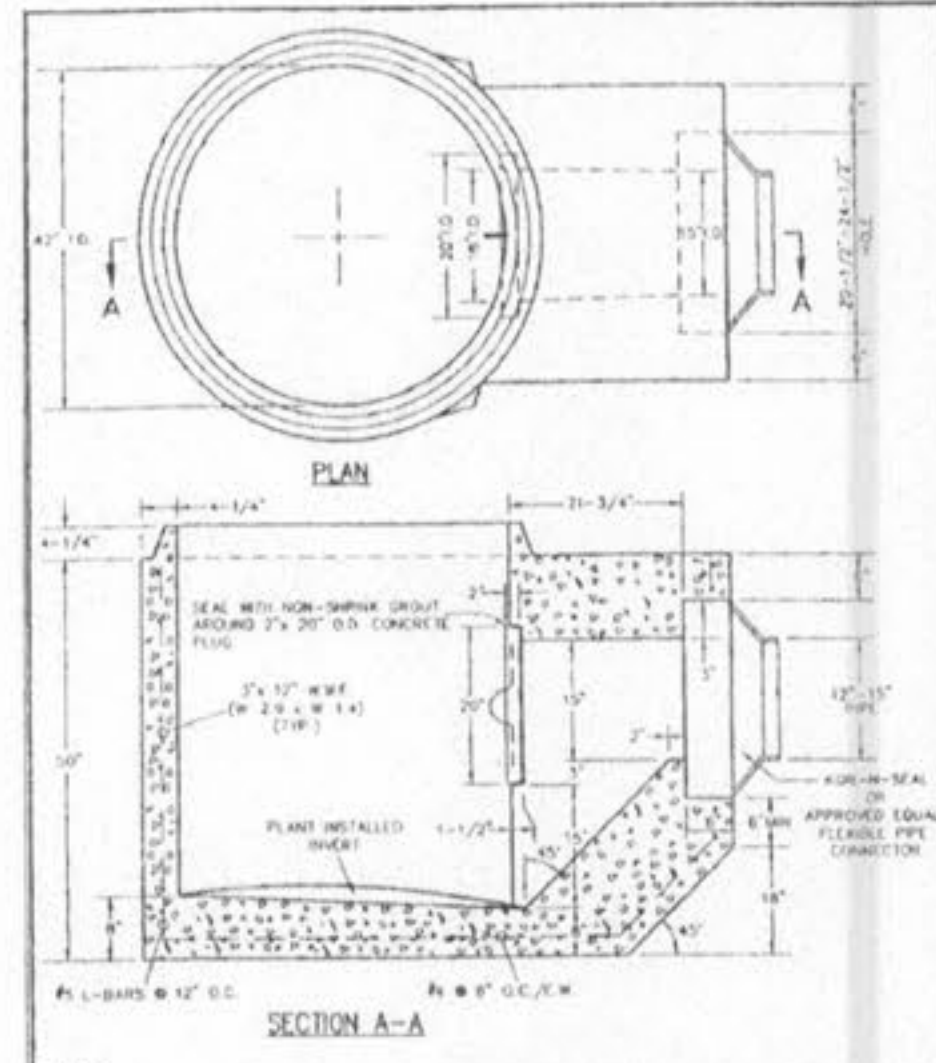


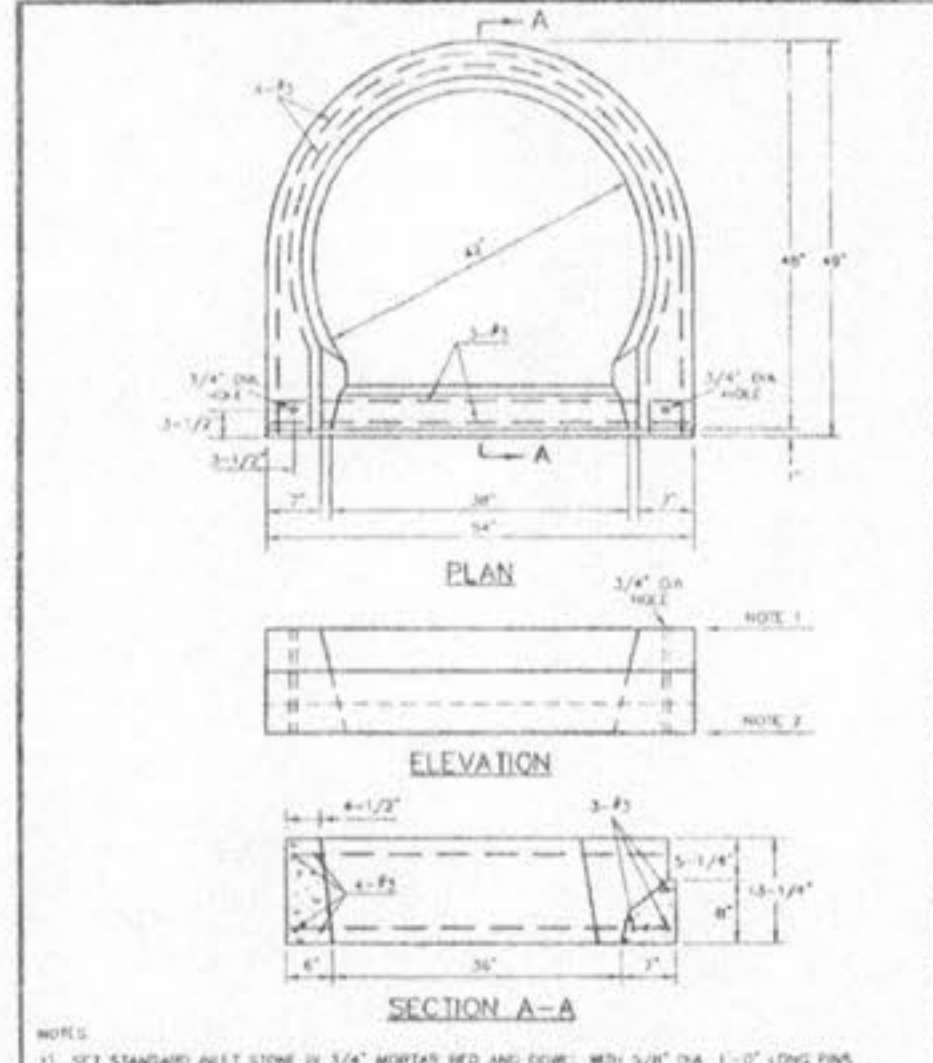
SINGLE STREET INLETS PRECAST CONCRETE	MP	J.K./J.A.M.	2000	SHEET 37
METROPOLITAN ST. LOUIS SEWER DISTRICT Standard Details of Sewer Construction	DR.	J.C.K.	2000	SHEET 37



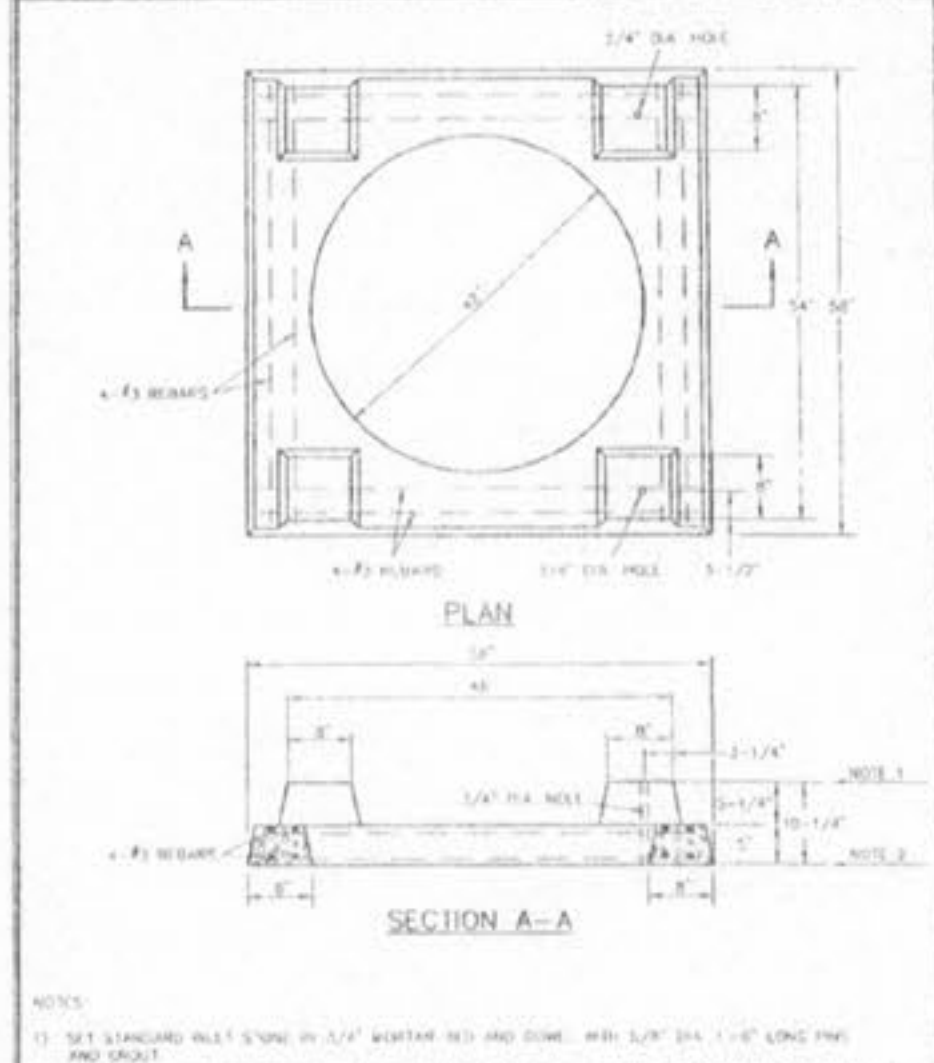
DOUBLE UNTRAPPED STREET INLET PRECAST CONCRETE	MP	J.K./J.A.M.	2000	SHEET 38
METROPOLITAN ST. LOUIS SEWER DISTRICT Standard Details of Sewer Construction	DR.	J.C.K.	2000	SHEET 38



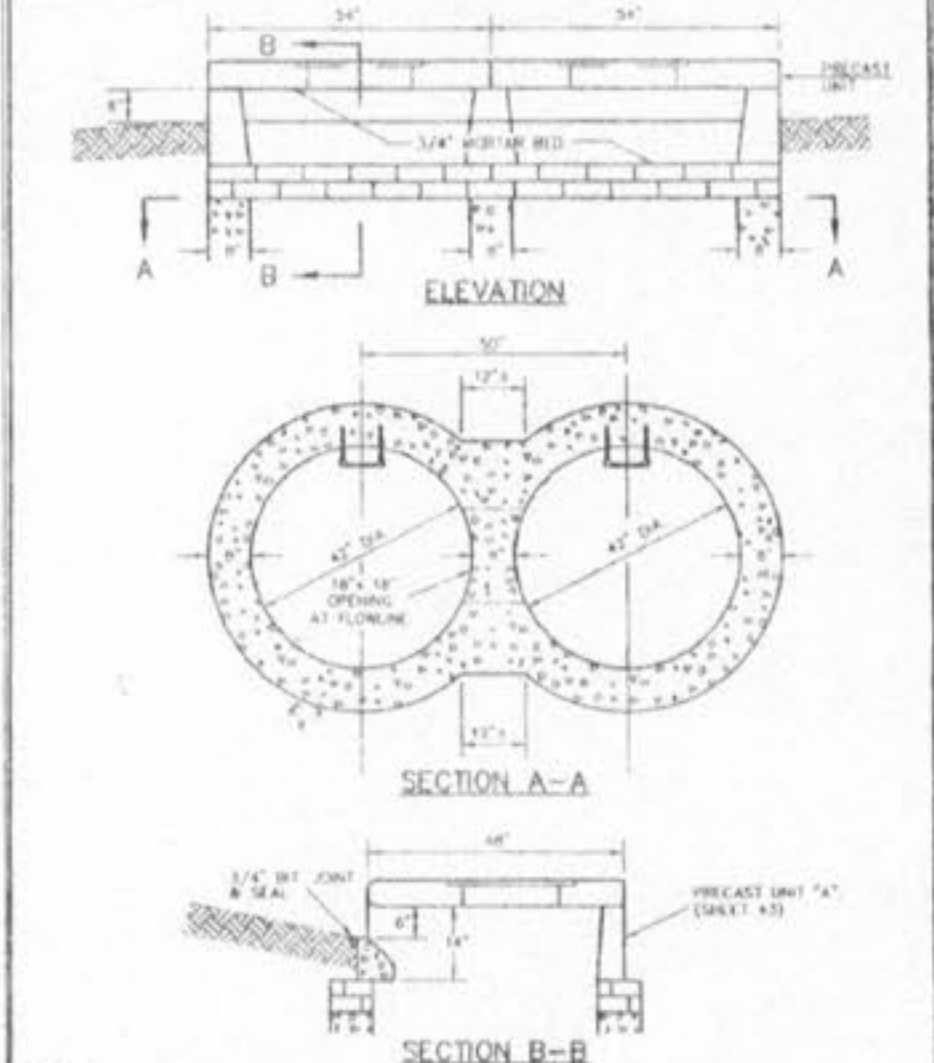
TRAPPED STREET INLET BASE PRECAST CONCRETE	MP	J.K./J.A.M.	2000	SHEET 39
METROPOLITAN ST. LOUIS SEWER DISTRICT Standard Details of Sewer Construction	DR.	J.C.K.	2000	SHEET 39



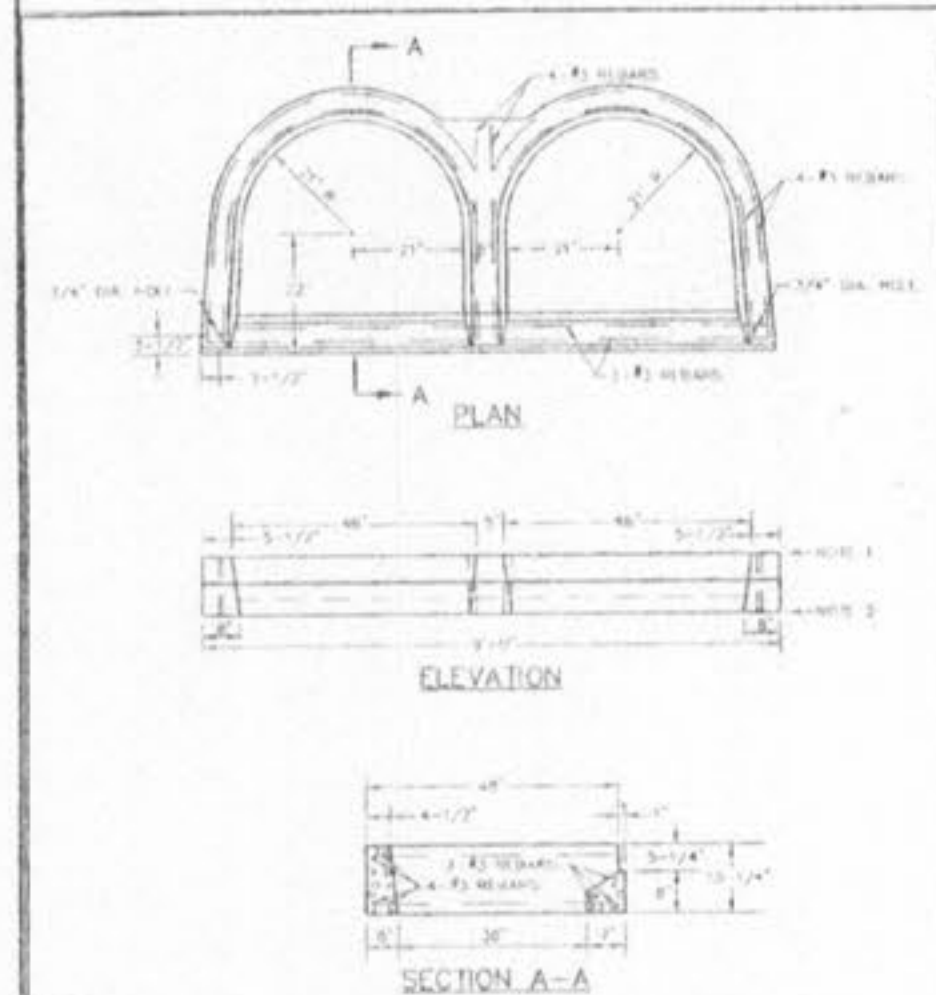
PRECAST CONCRETE UNIT FOR SINGLE STREET INLET	MP	J.K./J.A.M.	2000	SHEET 40
METROPOLITAN ST. LOUIS SEWER DISTRICT Standard Details of Sewer Construction	DR.	J.C.K.	2000	SHEET 40



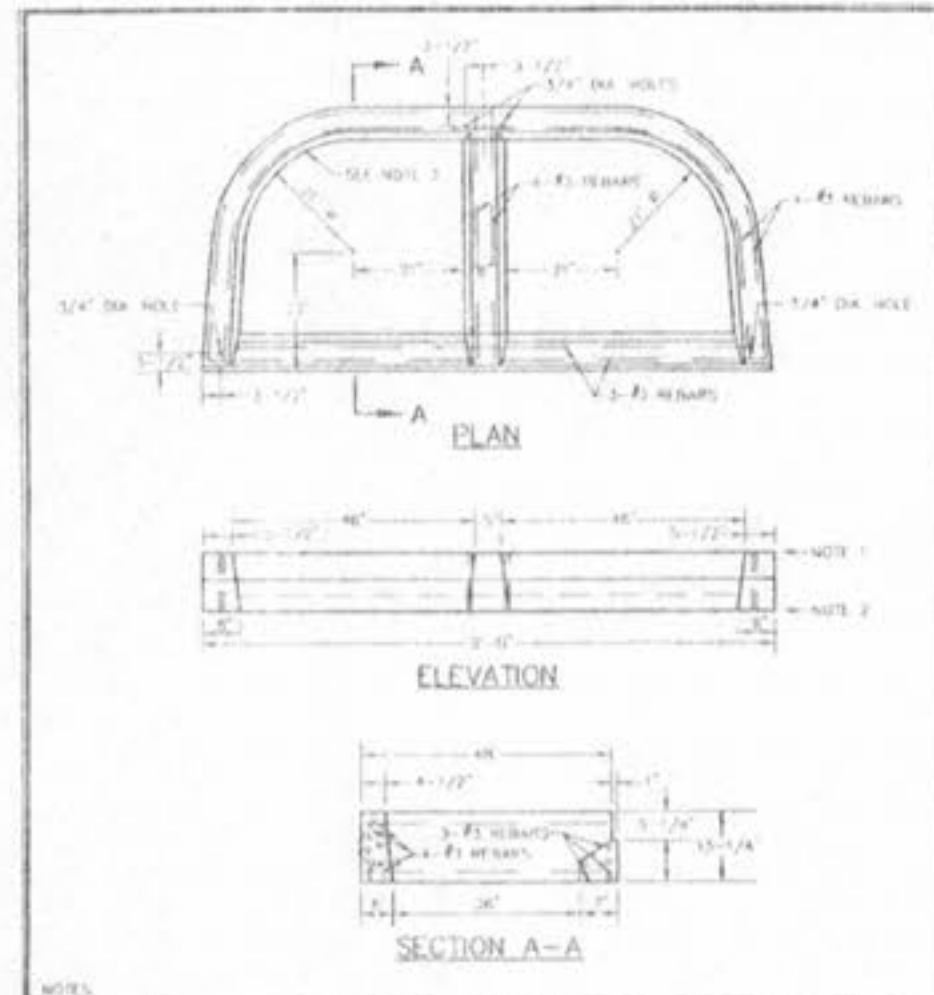
PRECAST CONCRETE UNIT FOR 4 WAY AREA INLET	MP	J.K./J.A.M.	2000	SHEET 41
METROPOLITAN ST. LOUIS SEWER DISTRICT Standard Details of Sewer Construction	DR.	J.C.K.	2000	SHEET 41



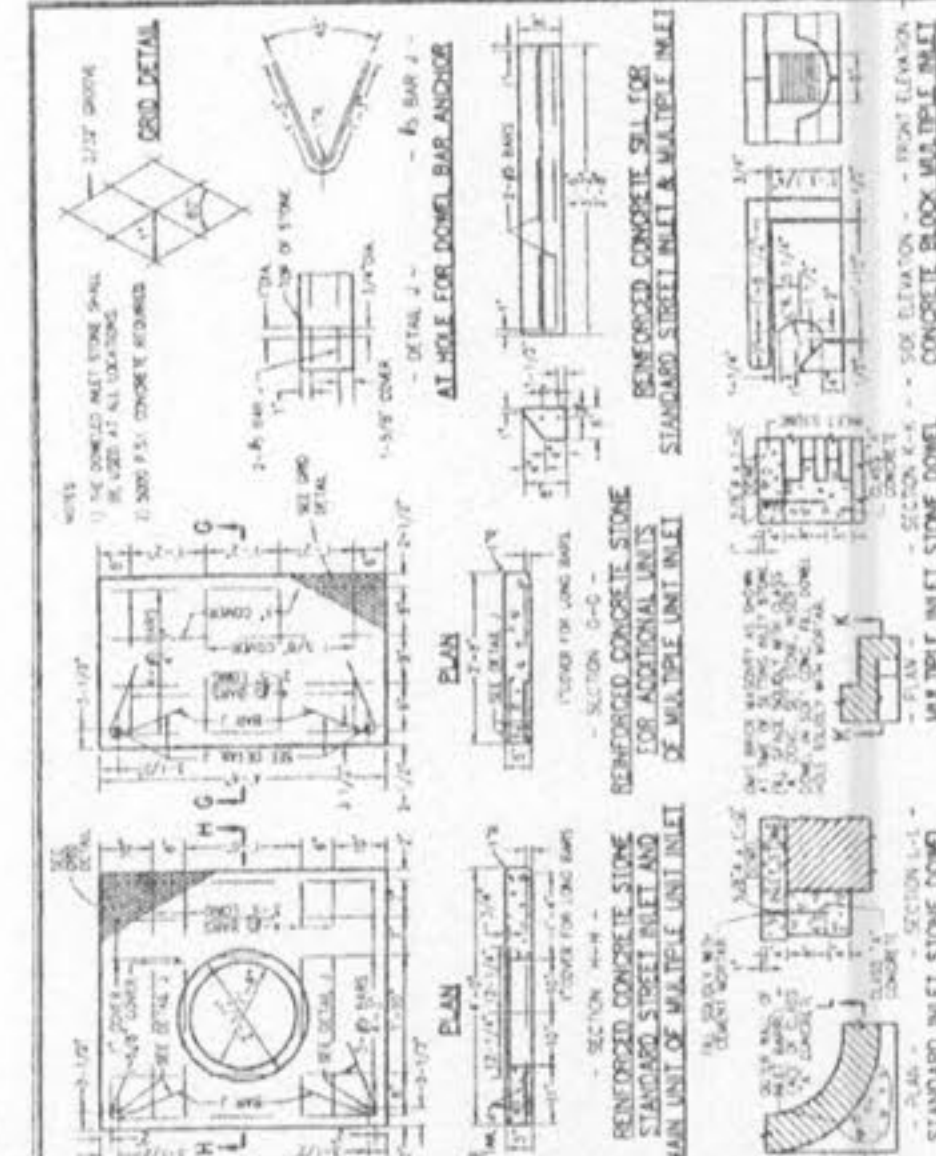
CONCRETE DOUBLE STREET INLET WITH PRECAST CONCRETE UNIT "A"	MP	J.K./J.A.M.	2000	SHEET 42
METROPOLITAN ST. LOUIS SEWER DISTRICT Standard Details of Sewer Construction	DR.	J.C.K.	2000	SHEET 42



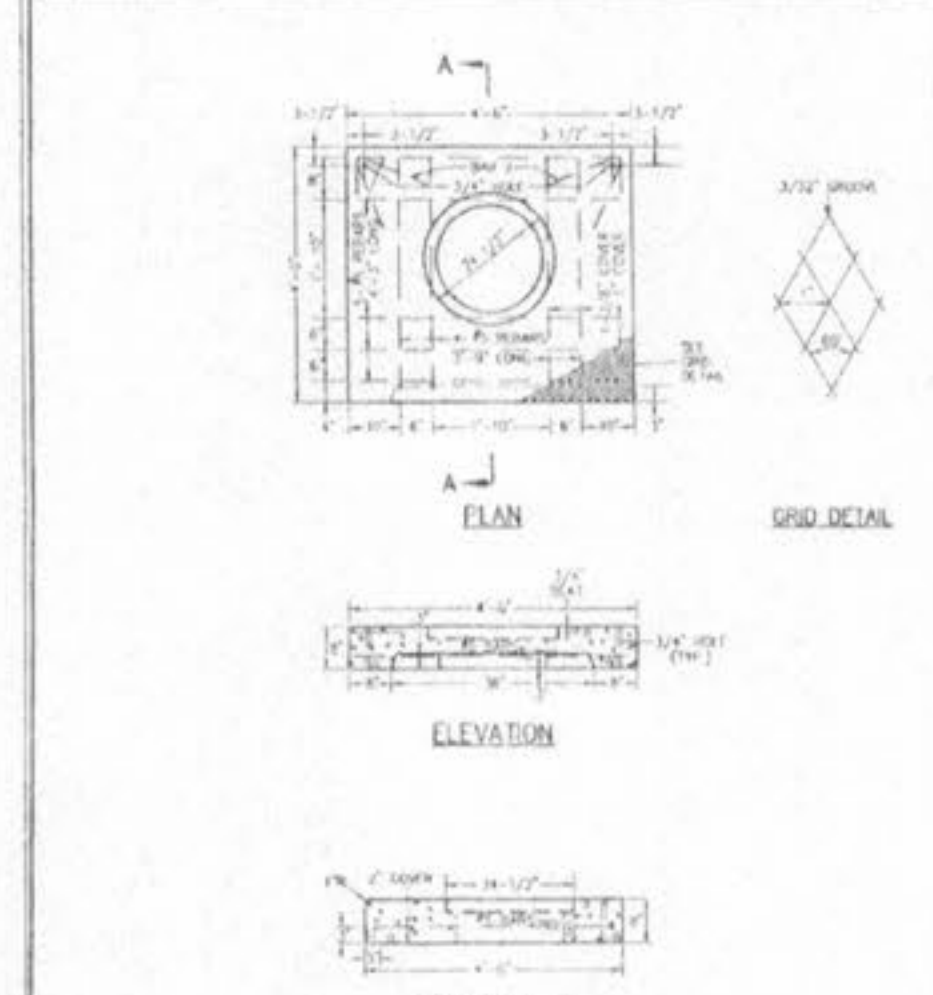
PRECAST CONCRETE UNIT "A" FOR STREET DOUBLE INLET	MP	J.K./J.A.M.	2000	SHEET 43
METROPOLITAN ST. LOUIS SEWER DISTRICT Standard Details of Sewer Construction	DR.	J.C.K.	2000	SHEET 43



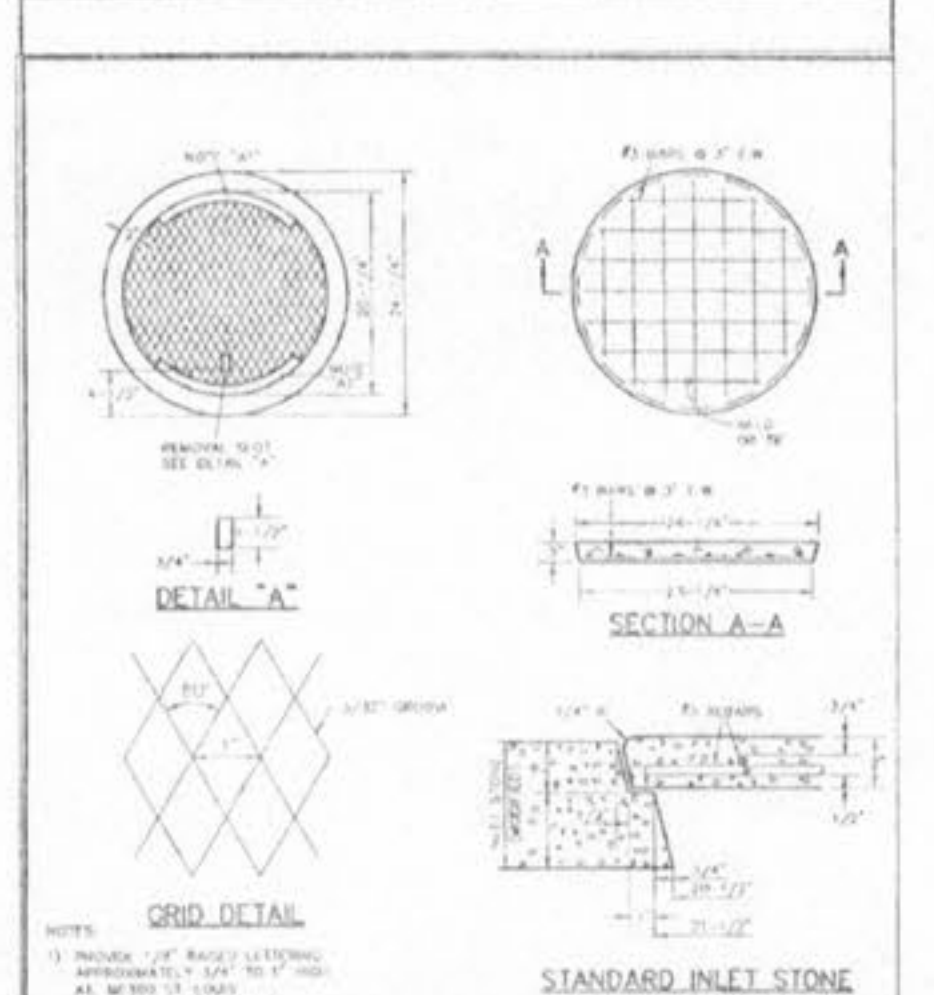
PRECAST CONCRETE UNIT "B" FOR STREET DOUBLE INLET	MP	J.K./J.A.M.	2000	SHEET 44
METROPOLITAN ST. LOUIS SEWER DISTRICT Standard Details of Sewer Construction	DR.	J.C.K.	2000	SHEET 44



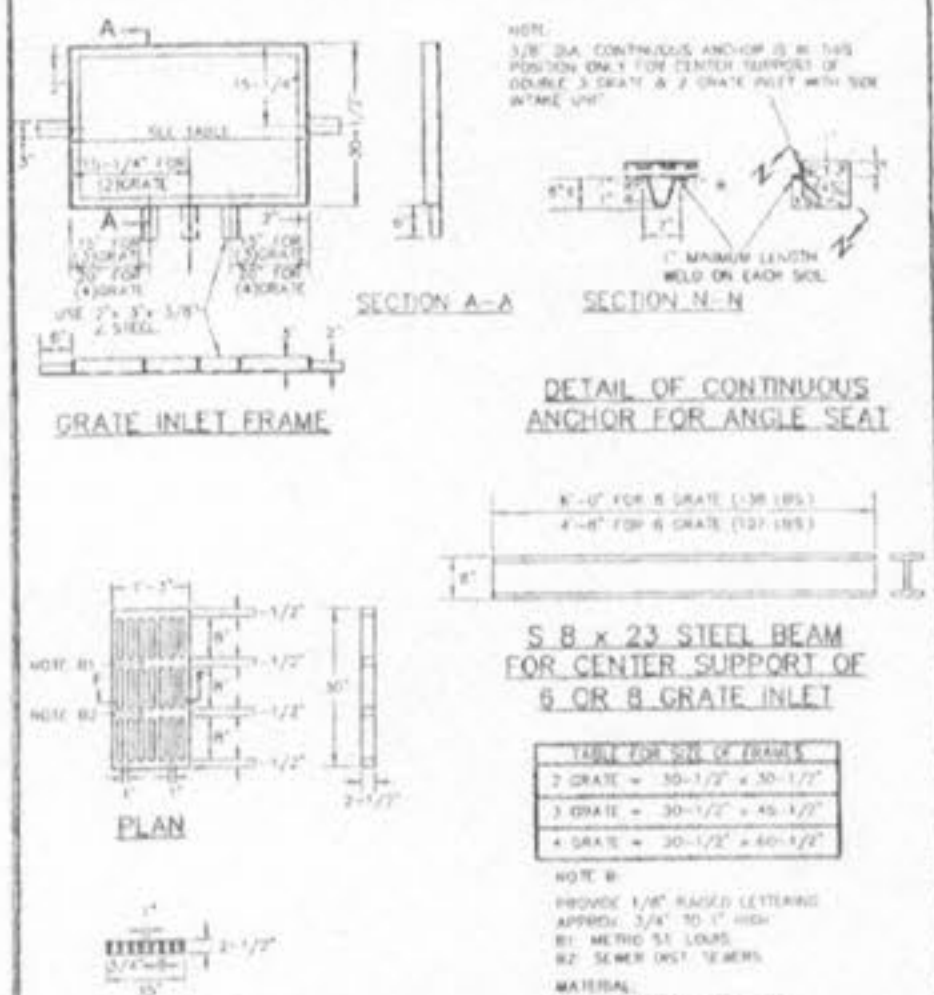
STANDARD - INLET STONES, BLOCKS & DESIGN DETAILS	MP	J.K./J.A.M.	2000	SHEET 45
METROPOLITAN ST. LOUIS SEWER DISTRICT Standard Details of Sewer Construction	DR.	J.C.K.	2000	SHEET 45



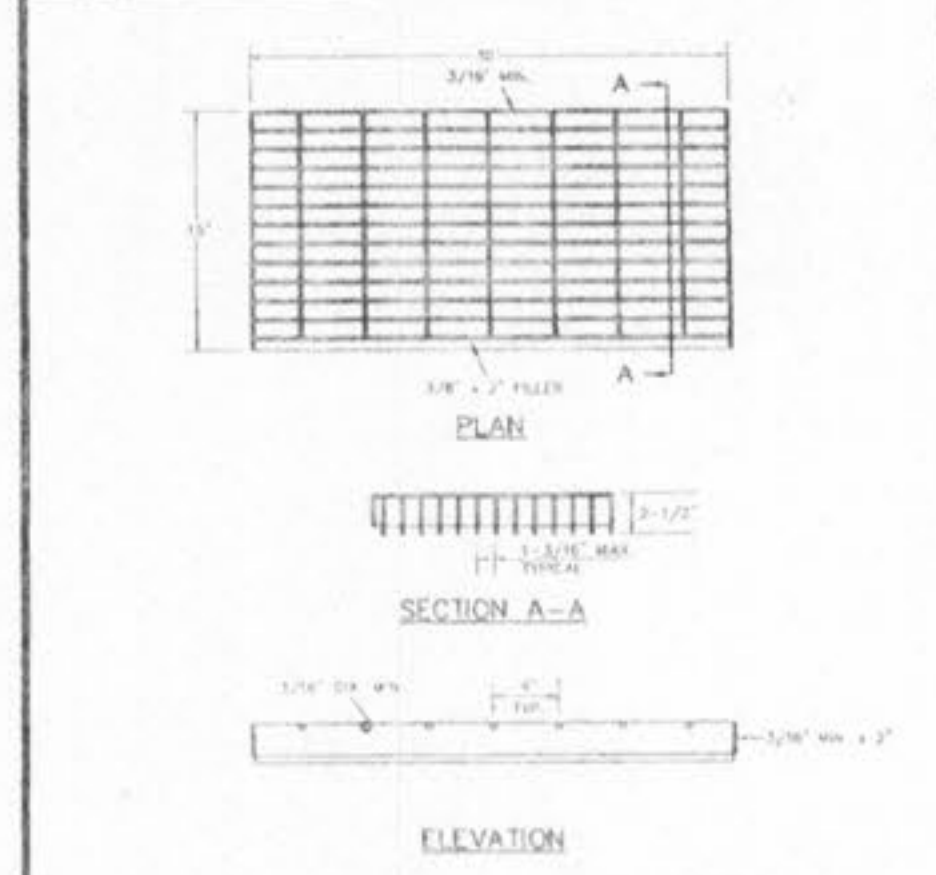
HEAVY DUTY 8 INCH INLET STONE (ALTERNATE)	MP	J.K./J.A.M.	2000	SHEET 46
METROPOLITAN ST. LOUIS SEWER DISTRICT Standard Details of Sewer Construction	DR.	J.C.K.	2000	SHEET 46



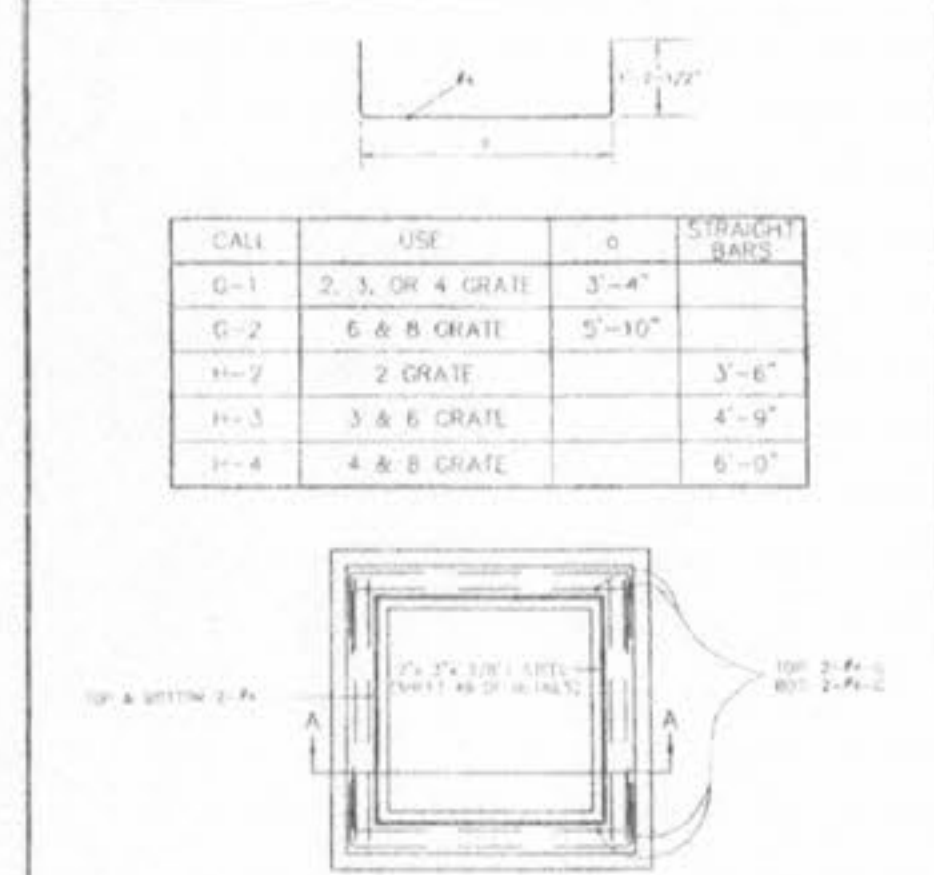
PRECAST CONCRETE INLET COVER	MP	J.K./J.A.M.	2000	SHEET 47
METROPOLITAN ST. LOUIS SEWER DISTRICT Standard Details of Sewer Construction	DR.	J.C.K.	2000	SHEET 47



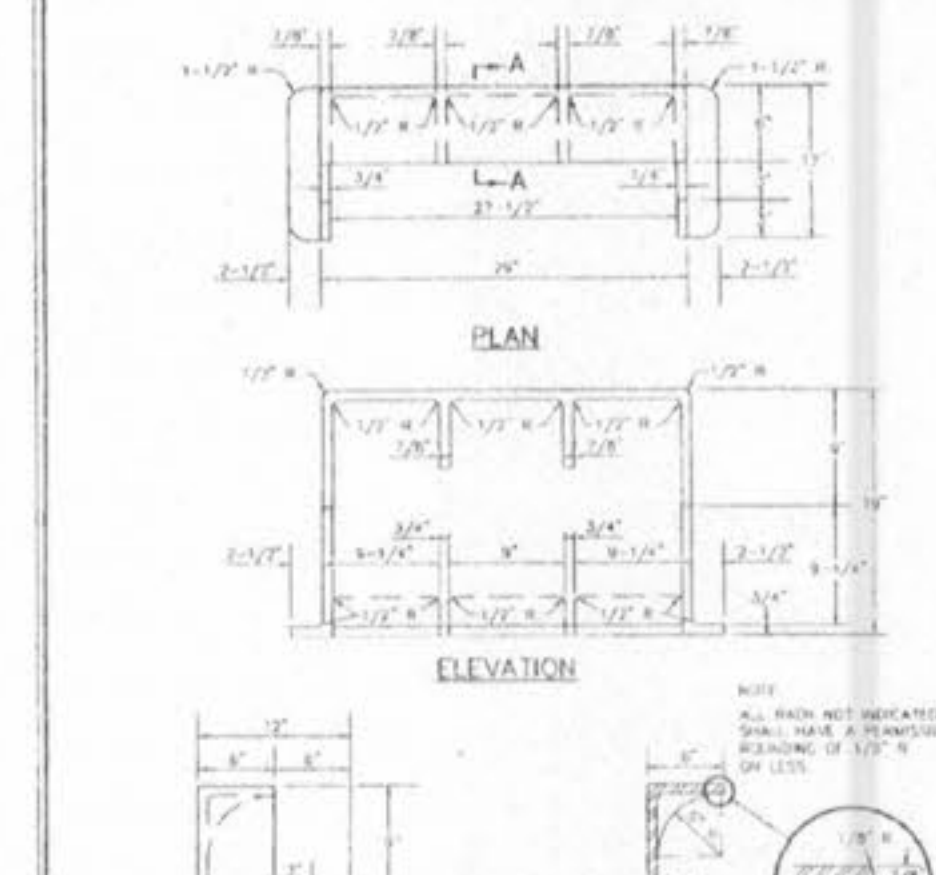
DETAILS OF INLET FRAME AND GRATES	MP	J.K./J.A.M.	2000	SHEET 48
METROPOLITAN ST. LOUIS SEWER DISTRICT Standard Details of Sewer Construction	DR.	J.C.K.	2000	SHEET 48



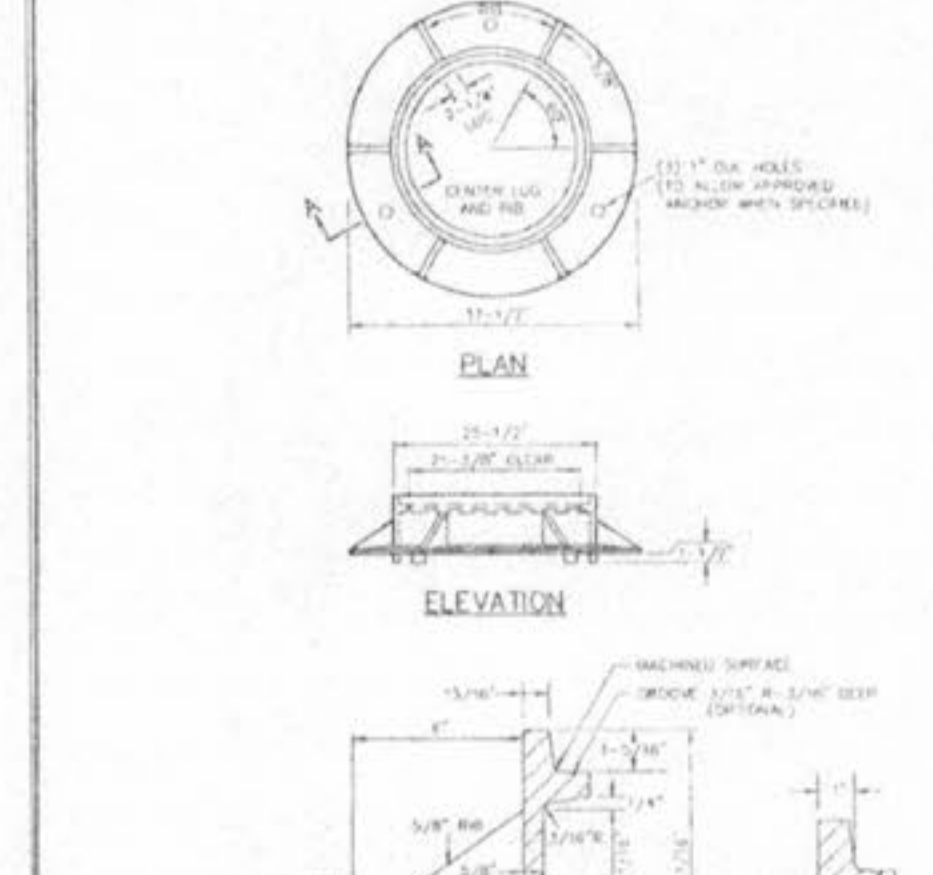
DETAIL OF STEEL GRATE	MP	J.K./J.A.M.	2000	SHEET 49
METROPOLITAN ST. LOUIS SEWER DISTRICT Standard Details of Sewer Construction	DR.	J.C.K.	2000	SHEET 49



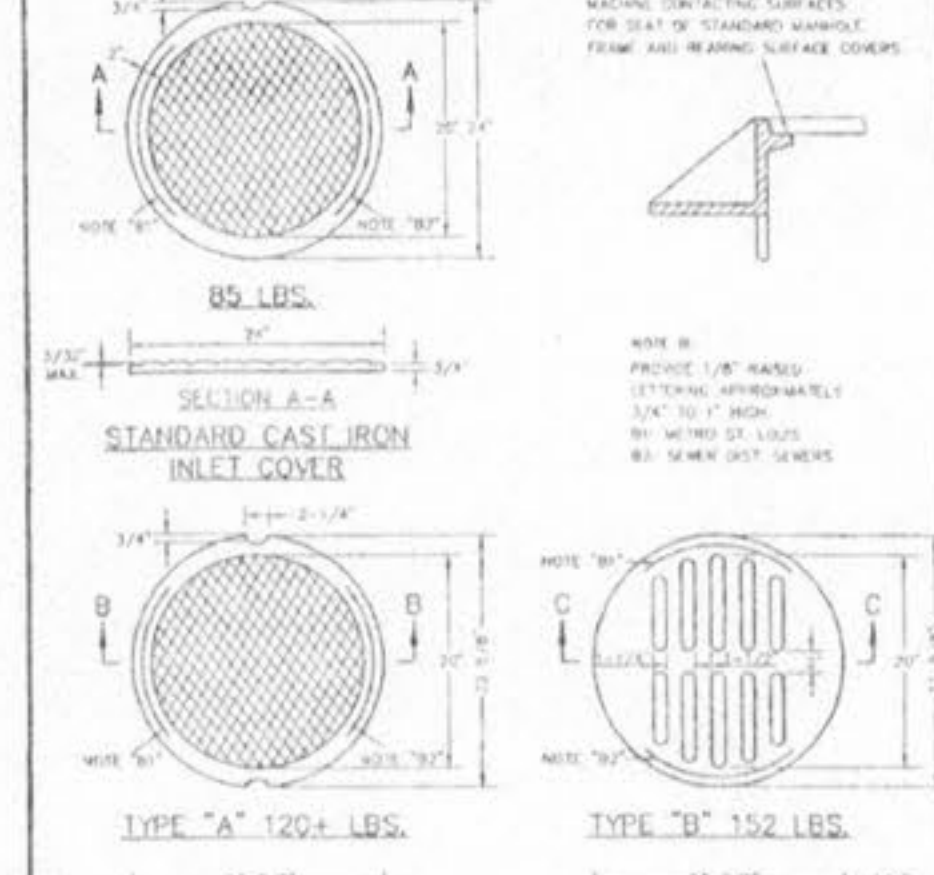
STEEL REQUIREMENTS FOR GRATE INLET SEAT	MP	J.K./J.A.M.	2000	SHEET 50
METROPOLITAN ST. LOUIS SEWER DISTRICT Standard Details of Sewer Construction	DR.	J.C.K.	2000	SHEET 50



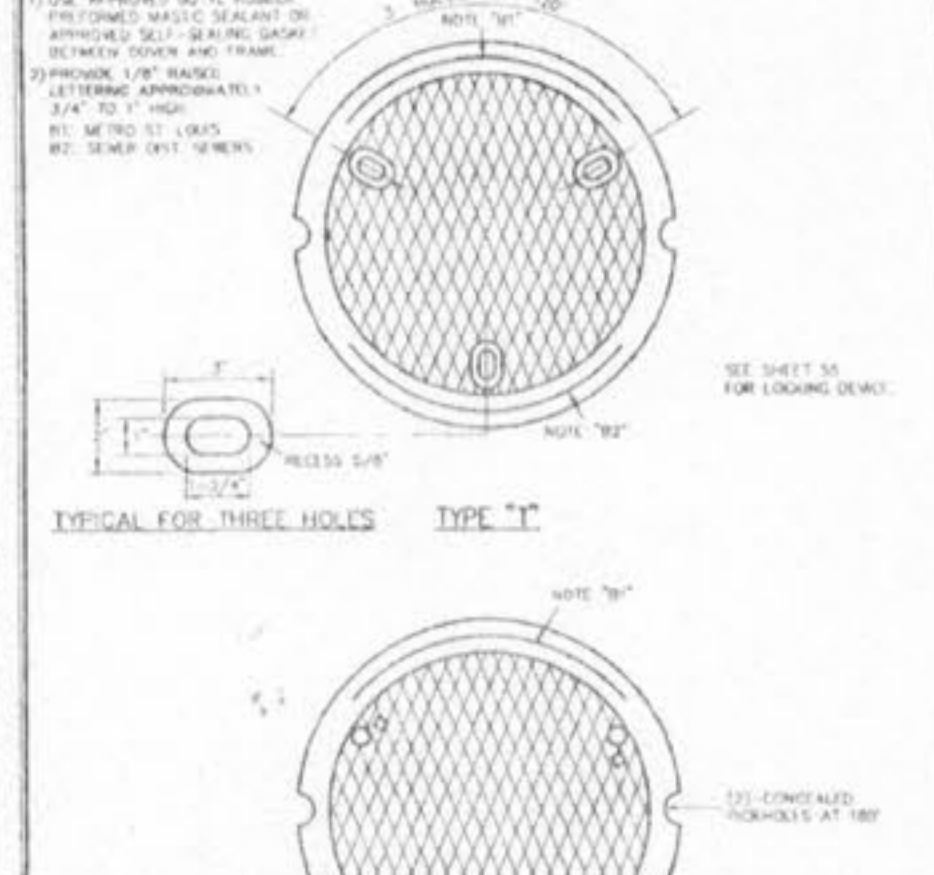
CAST IRON SIDE INTAKE UNIT FOR GRATED INLETS 249 LBS.	MP	J.K./J.A.M.	2000	SHEET 51
METROPOLITAN ST. LOUIS SEWER DISTRICT Standard Details of Sewer Construction	DR.	J.C.K.	2000	SHEET 51



CAST IRON MANHOLE FRAME	MP	J.K./J.A.M.	2000	SHEET 52
METROPOLITAN ST. LOUIS SEWER DISTRICT Standard Details of Sewer Construction	DR.	J.C.K.	2000	SHEET 52



CAST IRON COVERS, MANHOLES AND INLETS	MP	J.K./J.A.M.	2000	SHEET 53
METROPOLITAN ST. LOUIS SEWER DISTRICT Standard Details of Sewer Construction	DR.	J.C.K.	2000	SHEET 53



CAST IRON MANHOLE COVERS (LOCK TYPE)	MP	J.K./J.A.M.	2000	SHEET 54
METROPOLITAN ST. LOUIS SEWER DISTRICT Standard Details of Sewer Construction	DR.	J.C.K.	2000	SHEET 54

ISSUE REMARKS DATE  
1 11-14-02 1E SUBMIT

PREPARED FOR:

*McBride & Son Home, Inc.*  
#1 McBride & Son Center Drive  
Chesterfield, Missouri 63005  
(636) 537-2000

THE **STERLING** CO.  
ENGINEERS & SURVEYORS  
5055 NEW BAUMGARTNER ROAD  
ST. LOUIS, MISSOURI 63129  
(314) 487-0440 FAX 487-8644  
E-Mail: Sterling@con-stl.net

PREPARED BY:

DRAWN: DESIGNED: CHECKED: RLA

PROJECT: **BRIARCHASE** CONSTRUCTION DETAILS  
SHEET TITLE: CONSTRUCTION DETAILS

NO. 02 03 043  
M.S.D. SHEET CD5  
DIGITAL FILE LOCATION: BDRW-STERLING-2  
G:\DRAWING.DWG OF