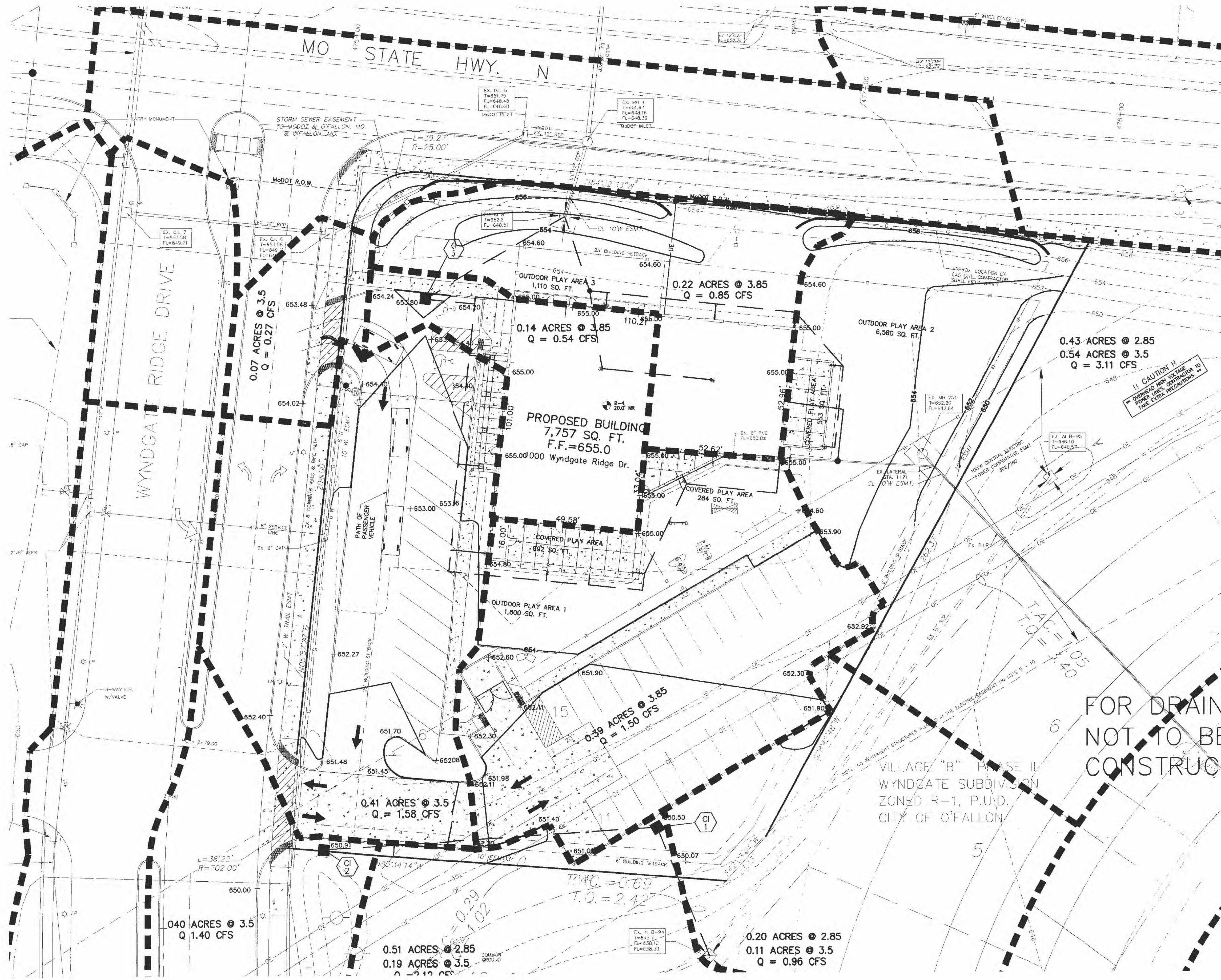
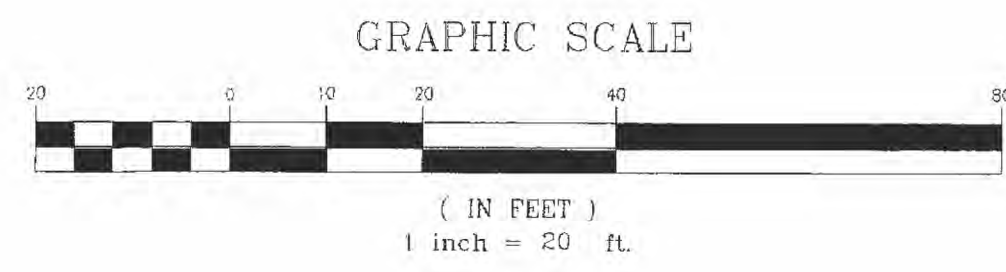


TRACTS OF LAND BEING PART OF FRACTIONAL SECTIONS 16 & 17, AND U.S. SURVEYS 61 & 417, TOWNSHIP 46 NORTH, RANGE 2 EAST, ST. CHARLES COUNTY, MISSOURI



FOR DRAINAGE PURPOSES ONLY  
NOT TO BE USED FOR  
CONSTRUCTION

VILLAGE "B" PHASE II  
WYNDGATE SUBDIVISION  
ZONED R-1, P.U.D.  
CITY OF OFFALLON

NOTE  
Underground utilities and structures have been plotted from available information and therefore, their location must be considered approximate only. It is the responsibility of the individual contractors to verify the utility companies before actual construction.

MANUFACTURER	SIZE	ADHESIVE	STYLE	MESSAGE (PART #)	WEBSITE
ACP International	3 7/8"	Epoxy	Crystal Cap	No Dumping Drains To Waterways (SD-W-CC)	www.acpinternational.com
DAS Manufacturing, Inc.	4"	Epoxy	Standard Style	No Dumping Drains To Stream (#SDS)	www.dasmanufacturing.com

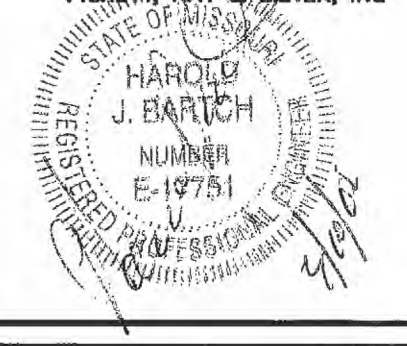
FILE #3203.05  
**NOT APPROVED FOR CONSTRUCTION**

**PICKETT RAY & SILVER**  
CIVIL ENGINEERS  
PLANNERS  
LAND SURVEYORS  
333 Mid Rivers Mall Drive  
St. Peters, MO 65376  
Phone (636) 397-1211  
Fax (636) 397-1104

**BRIGHT START**  
IMPROVEMENT PLANS  
ST. CHARLES, MO  
Prepared For:  
**SUMMIT POINTE, L.L.C.**  
230 FOX HILL ROAD  
ST. CHARLES, MO 63301  
(636) 946-9500

REVISIONS	NO.	DATE	PER CITY OF OFFALLON	PER CITY OF OFFALLON
	1	01-09-06	REVISED PER T.R. HUGHES	
	2	1-16-06	REVISED PER T.R. HUGHES	
	3	02-06-06	REVISED PER T.R. HUGHES	
	4	02-21-06	PER CITY OF OFFALLON	
	5	03-10-06	PER CITY OF OFFALLON	

ENGINEERS AUTHENTICATION  
The responsibility for professional engineering liability on this project is hereby limited to the set of plans authenticated by the seal, signature, and date hereunder attached. Responsibility is disclaimed for all other engineering plans involved in this project and specifically excludes revisions after this date unless reauthenticated.



DRAWN	DATE
B.PARKS	12-05-05
CHECKED	DATE
D.BYRD	12-05-05

PROJECT # 01267.BRST.OOC  
TASK # 2 FIELD BOOK X

BRIGHT START  
IMPROVEMENT PLANS  
DRAINAGE AREA MAP  
SHEET 4 OF 7  
© Copyright 2004 by Pickett, Ray & Silver, Inc.