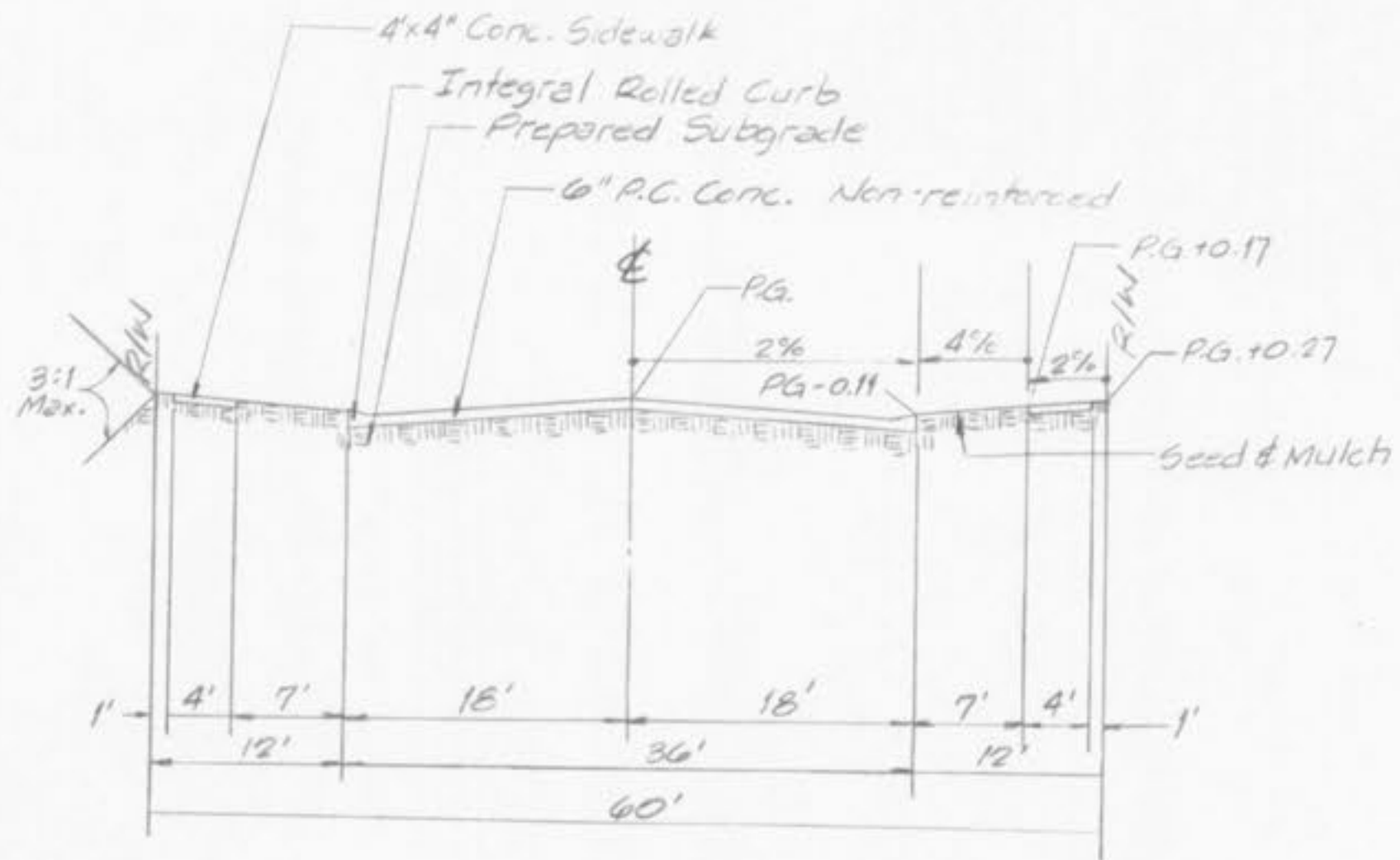
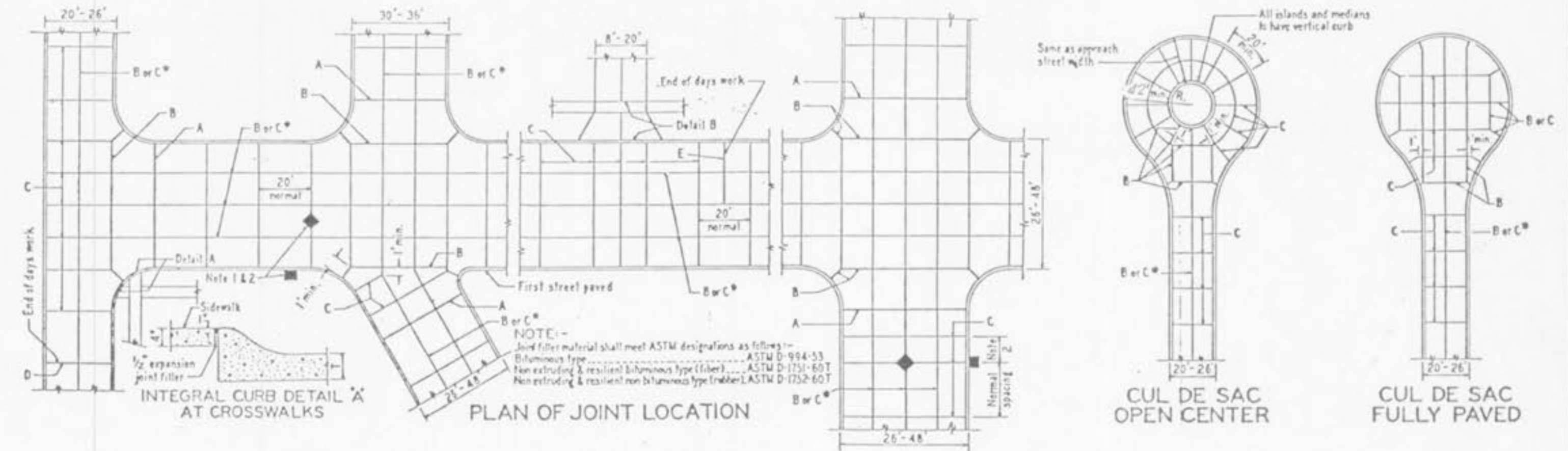
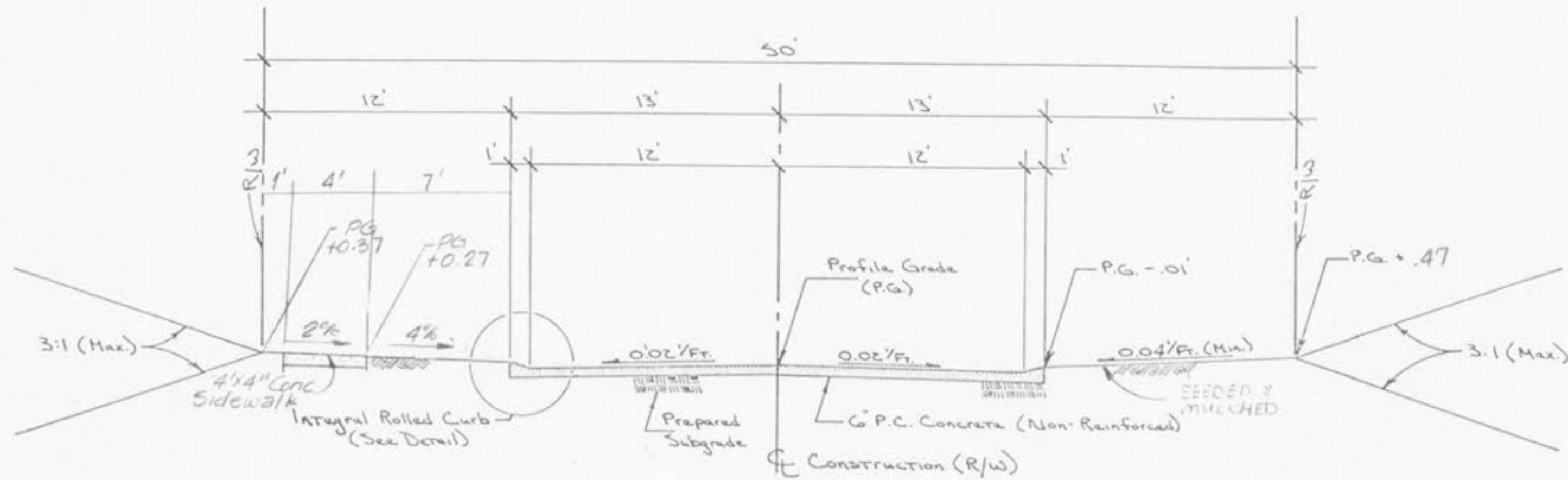


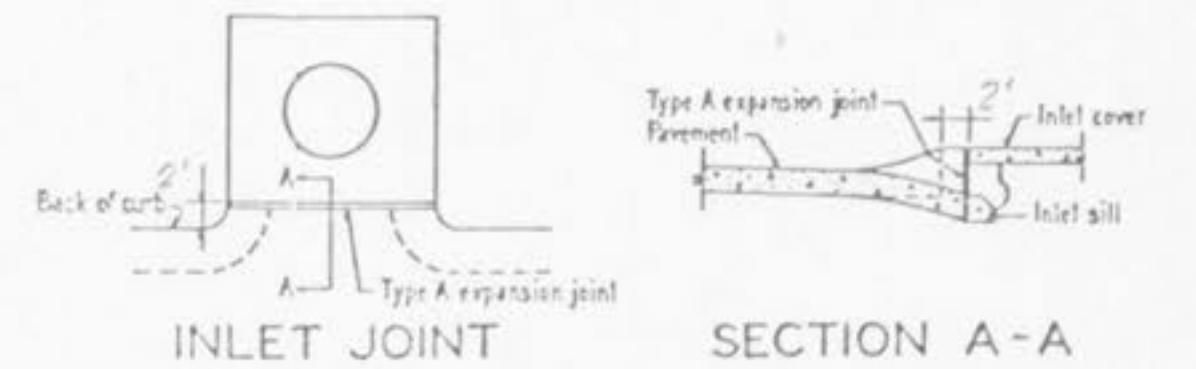
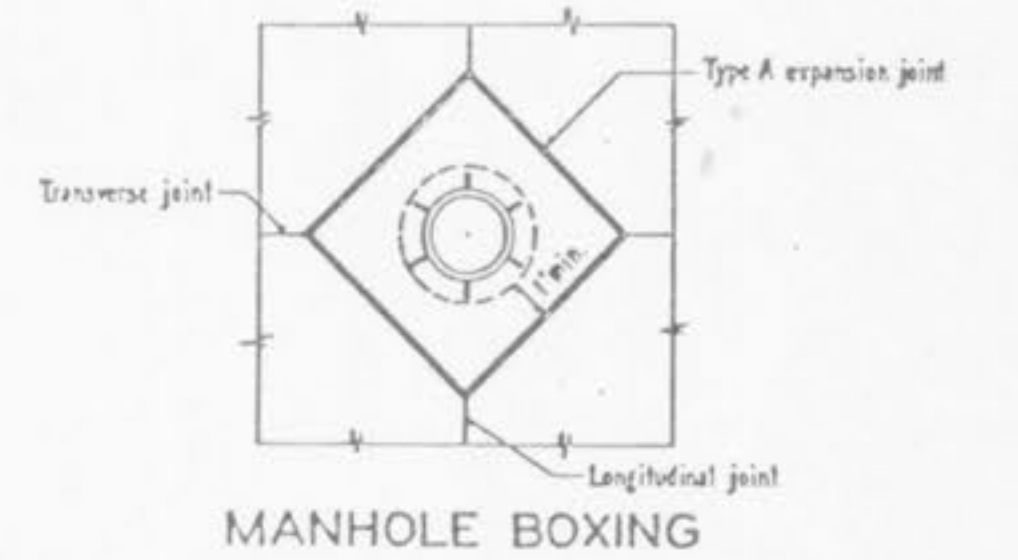
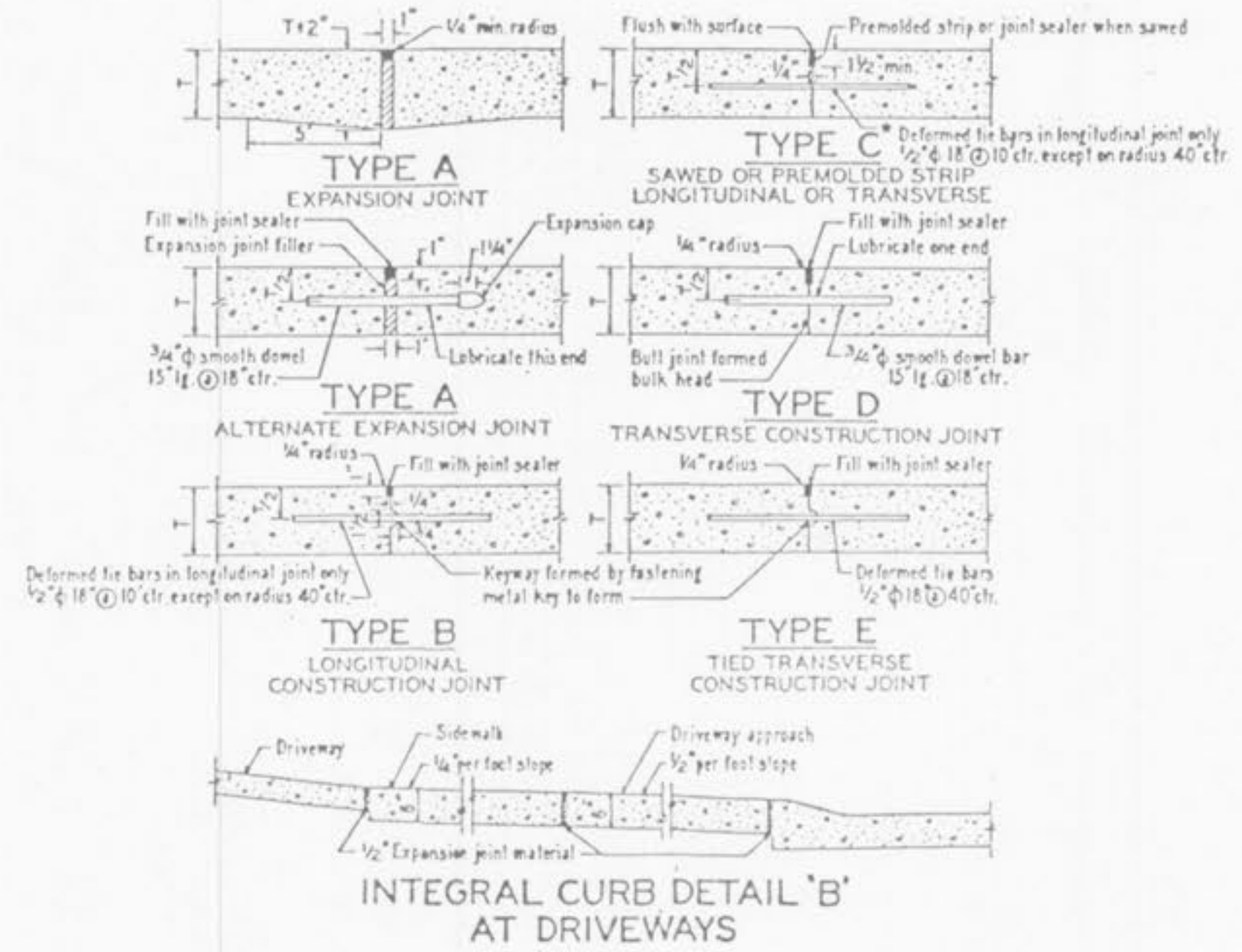
INTEGRAL CURB PAVEMENT TYPICAL SECTIONS AND DETAILS



TYPICAL SECTION
 (30' W. CONC. PVMT.)



TYPICAL SECTION
 (26' W. P.C. CONC. PVMT.)



NOTE

- 1) All catch basins shall be separated from the pavement and curb by expansion joint material extending completely through curb and slab. Manhole castings within the pavement limits shall be boxed in as shown.
- 2) When a joint falls within 3 ft. of or contacts basin, manholes or other structures, shorten one or more panels either side of opening to permit joint to fall on sound structures and at or between corners of rectangular structures.
- 3) 1/2" on local street.
- 4) 1-7" on Major or Thru street.