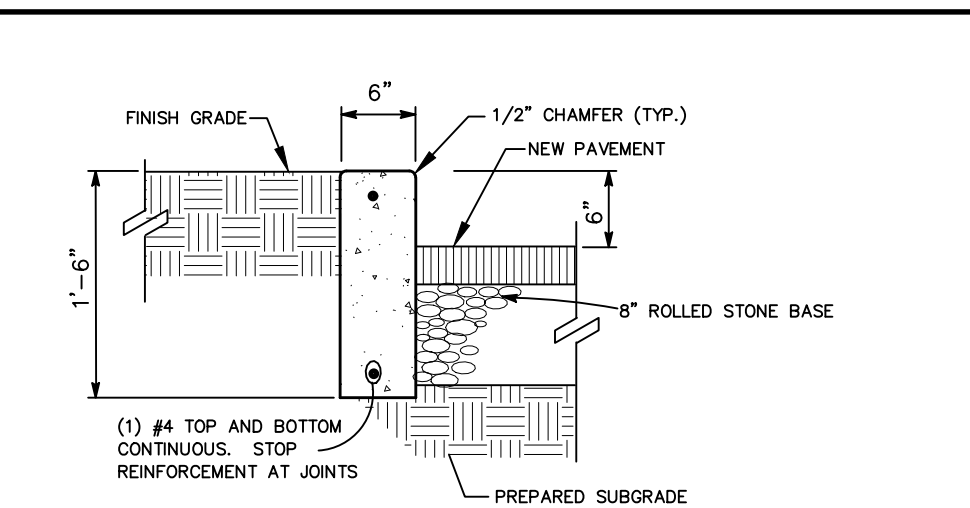


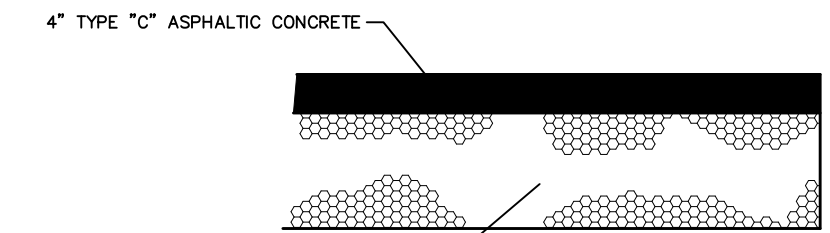
8" CONCRETE PAVEMENT DETAIL
NOT TO SCALE

* ALL GRANULAR ROLLED STONE BASE UNDER PROPOSED CONCRETE MUST BE COMPACTED TO 100% OF THE MAXIMUM DENSITY AS DETERMINED BY THE STANDARD PROCTOR TEST AASHTO T-99. CONCRETE COMPRESSIVE STRENGTH SHALL BE 4000 PSI IN 28 DAYS



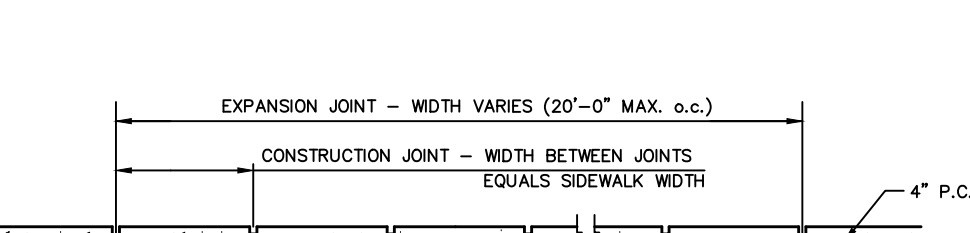
CONCRETE CURB DETAIL
NOT TO SCALE

* ALL GRANULAR ROLLED STONE BASE UNDER PROPOSED CONCRETE MUST BE COMPACTED TO 100% OF THE MAXIMUM DENSITY AS DETERMINED BY THE STANDARD PROCTOR TEST AASHTO T-99. CONCRETE COMPRESSIVE STRENGTH SHALL BE 4000 PSI IN 28 DAYS



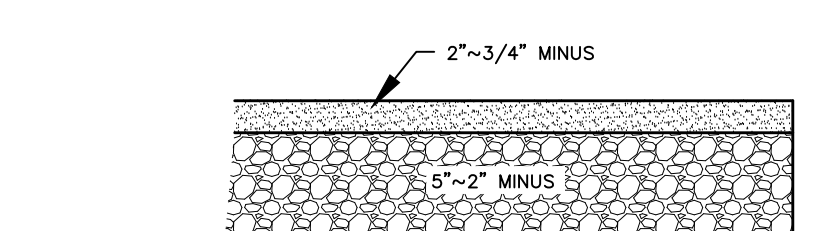
ASPHALT PAVEMENT DRIVE AISLE DETAIL
NOT TO SCALE

* THE ASPHALT SURFACE SHALL BE COMPACTED TO 98% MAXIMUM DENSITY.

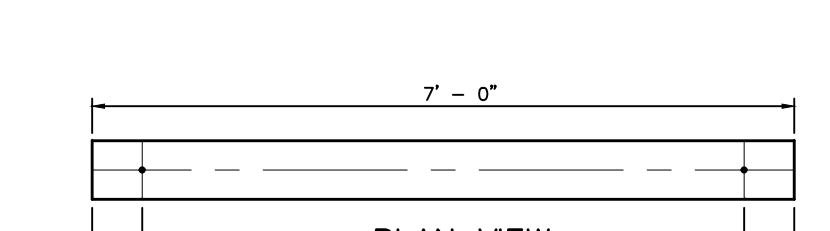


CONCRETE SIDEWALK DETAIL
NOT TO SCALE

* ALL GRANULAR ROLLED STONE BASE UNDER PROPOSED CONCRETE MUST BE COMPACTED TO 100% OF THE MAXIMUM DENSITY AS DETERMINED BY THE STANDARD PROCTOR TEST AASHTO T-99. CONCRETE COMPRESSIVE STRENGTH SHALL BE 4000 PSI IN 28 DAYS

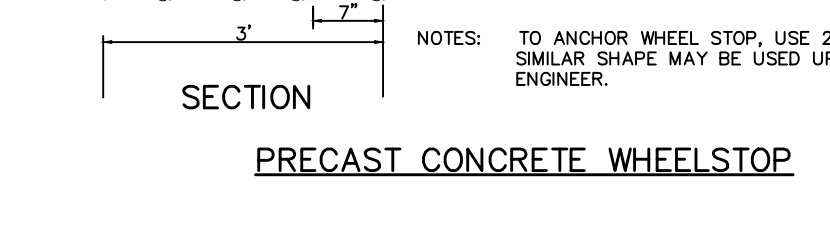


GRAVEL DETAIL
NOT TO SCALE

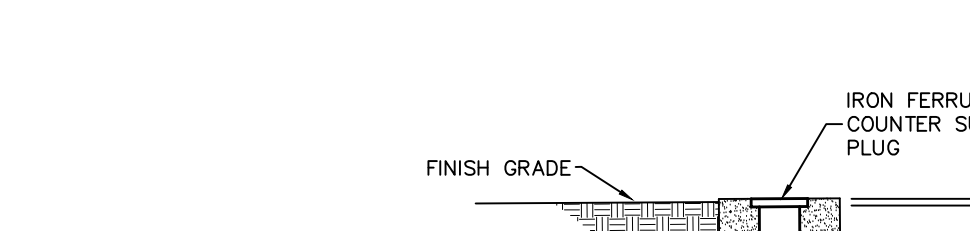


SECTION

NOTES: TO ANCHOR WHEEL STOP, USE 2 - #4 BARS 24" LONG USE 45° ELBOW WHEN ON END OF RUN. SIMILAR SHAPE MAY BE USED UPON APPROVAL OF THE ENGINEER.



SEWER CLEANOUT
NOT TO SCALE



DOWNSPOUT CLEANOUT
NOT TO SCALE



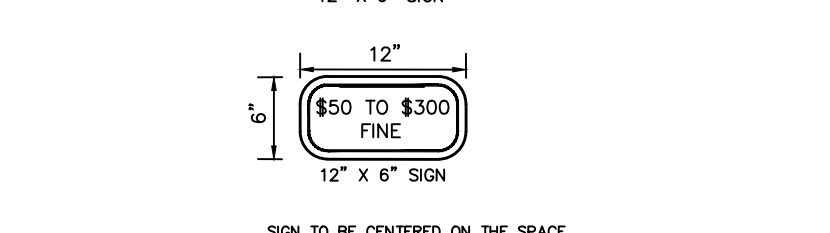
RESERVED PARKING SIGN

SIGN DESIGNATIONS ARE FROM THE CURRENT MANUAL ON UNIFORM TRAFFIC CONTROL DEVICES.

STANDARD SIGN FACE, STANDARD HIGHWAY DEPARTMENT, OR CITY STREET DEPARTMENT GAUGE, LETTERS AND BORDERS ARE GREEN, THE HANDICAP LOGO SQUARE IS BLUE AND THE BACKGROUND IS WHITE.

REFER TO NOTE RN#19 ON SHEET 2 FOR POST, BACK, AND BRACKET COLOR

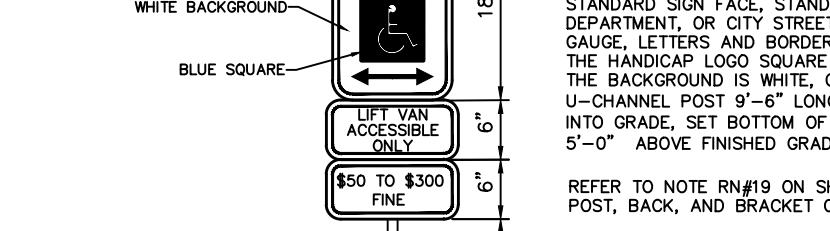
CONTRACTOR TO VERIFY ALL SIGNAGE WITH CITY PRIOR TO ORDERING ALL SIGNAGE.



VAN ACCESSIBLE SIGN

SIGN TO BE CENTERED ON THE SPACE

CONTRACTOR TO VERIFY ALL SIGNAGE WITH CITY PRIOR TO ORDERING ALL SIGNAGE.



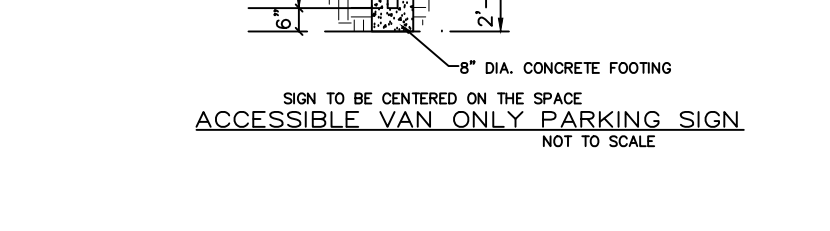
RESERVED PARKING SIGN

SIGN DESIGNATIONS ARE FROM THE CURRENT MANUAL ON UNIFORM TRAFFIC CONTROL DEVICES.

STANDARD SIGN FACE, STANDARD HIGHWAY DEPARTMENT, OR CITY STREET DEPARTMENT GAUGE, LETTERS AND BORDERS ARE GREEN, THE HANDICAP LOGO SQUARE IS BLUE AND THE BACKGROUND IS WHITE, GALVANIZED U-CHANNEL POST 5'-6" LONG, SET 2'-0" INTO GRADE, SET BOTTOM OF "FINE" SIGN 5'-0" ABOVE FINISHED GRADE.

REFER TO NOTE RN#19 ON SHEET 2 FOR POST, BACK, AND BRACKET COLOR

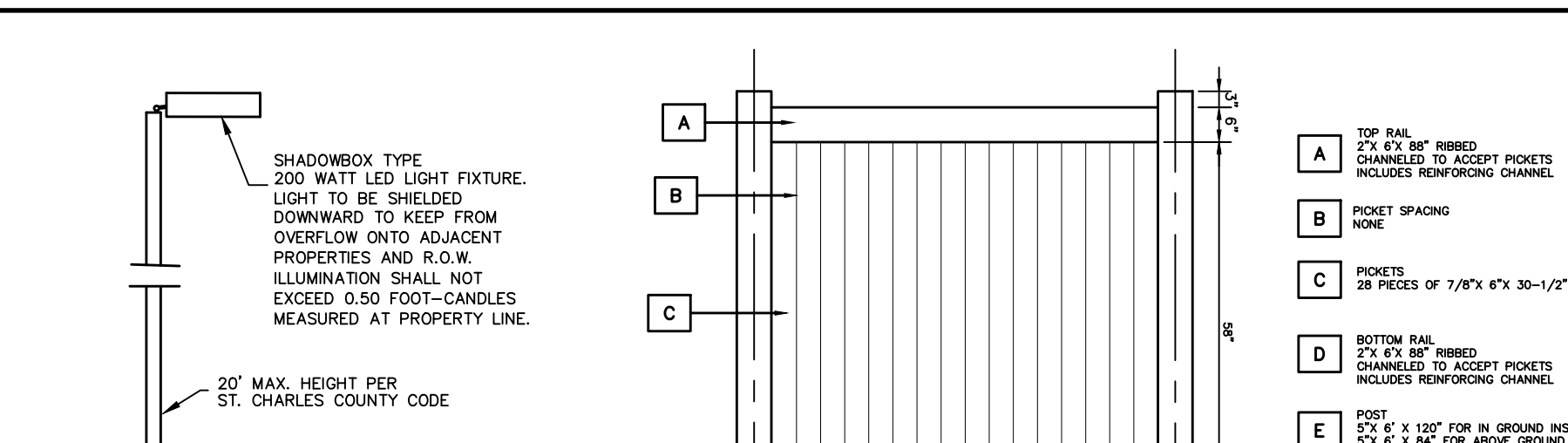
CONTRACTOR TO VERIFY ALL SIGNAGE WITH CITY PRIOR TO ORDERING ALL SIGNAGE.



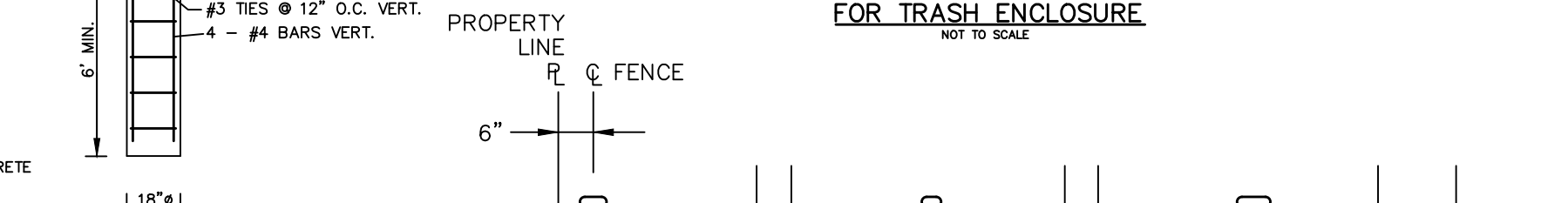
RESERVED PARKING SIGN

SIGN TO BE CENTERED ON THE SPACE

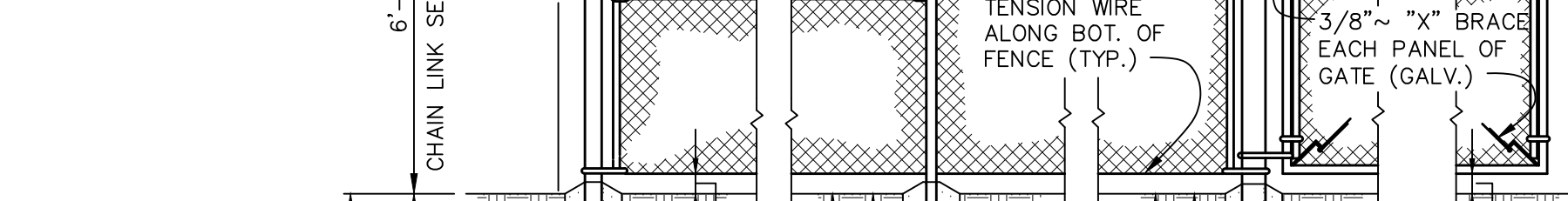
CONTRACTOR TO VERIFY ALL SIGNAGE WITH CITY PRIOR TO ORDERING ALL SIGNAGE.



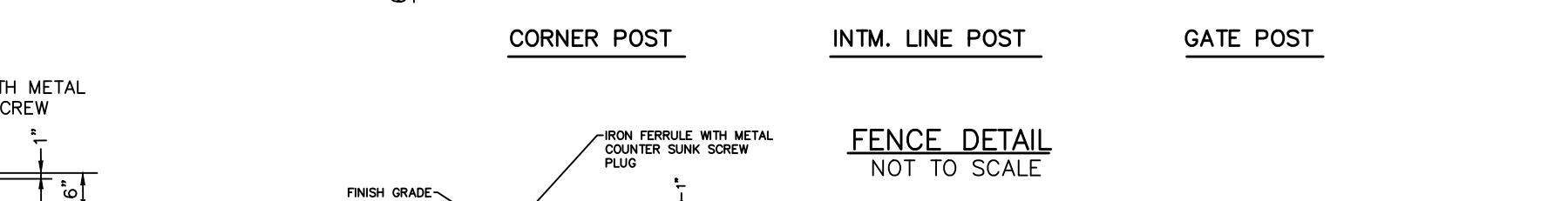
BUILDING MOUNTED LIGHT
NOT TO SCALE



6" HIGH VINYL PRIVACY FENCE FOR TRASH ENCLOSURE
NOT TO SCALE



CORNER POST, INTM. LINE POST, GATE POST



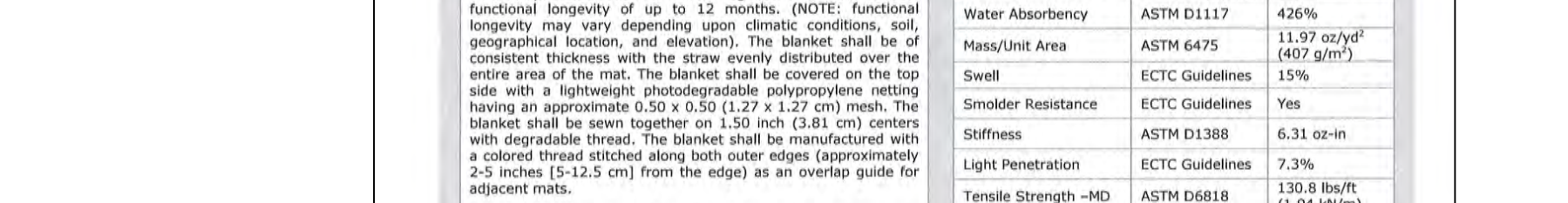
FENCE DETAIL
NOT TO SCALE



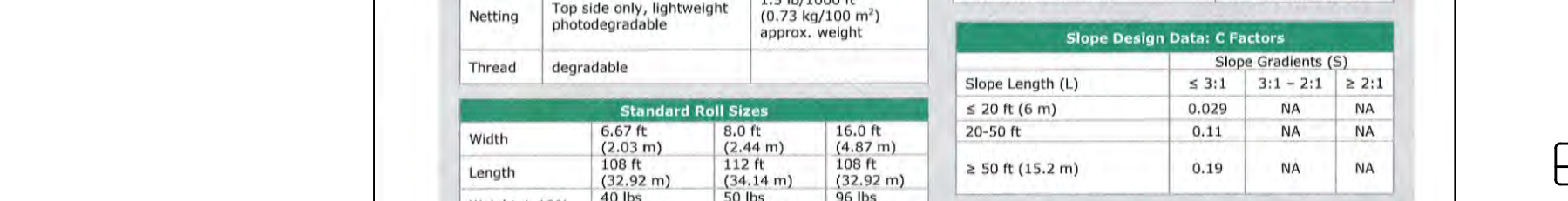
LIGHT POLE & BASE
NOT TO SCALE



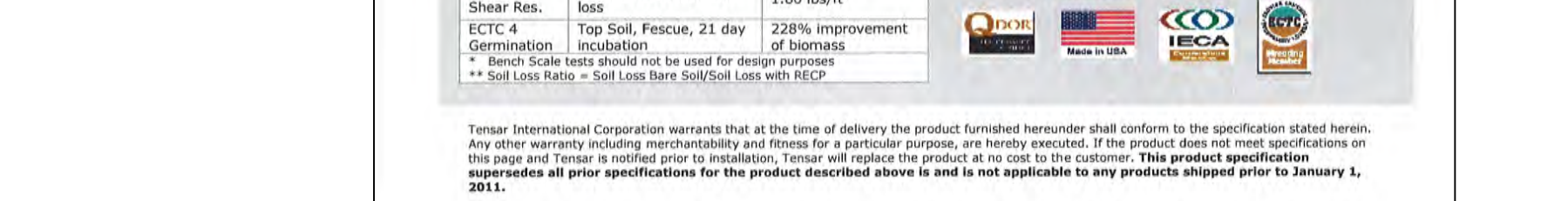
CHAIN LINK SECURITY FENCE



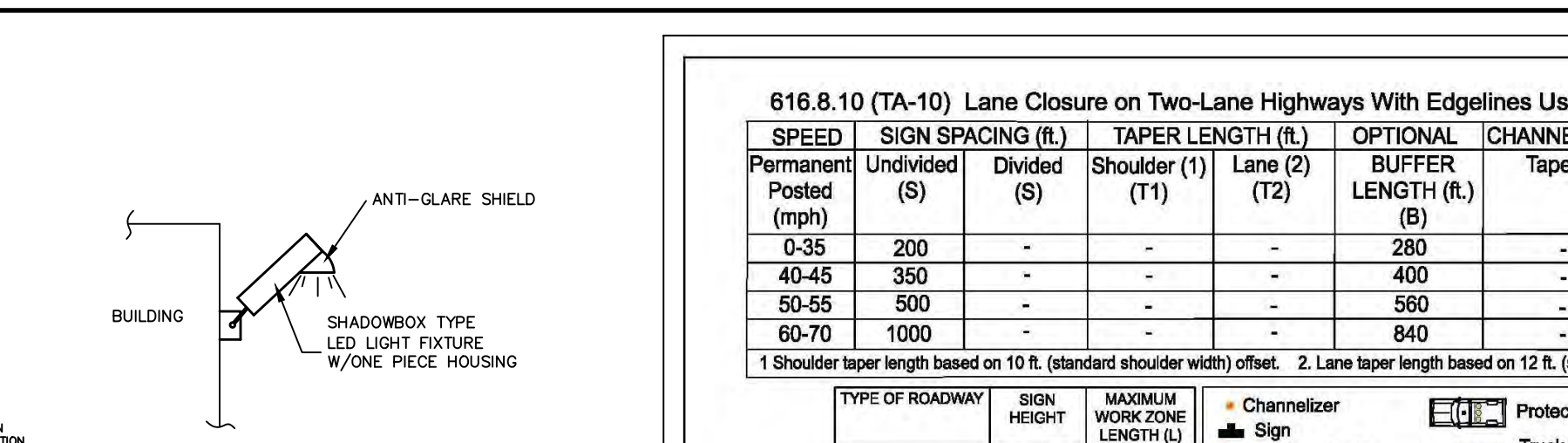
6" HIGH VINYL PRIVACY FENCE FOR TRASH ENCLOSURE
NOT TO SCALE



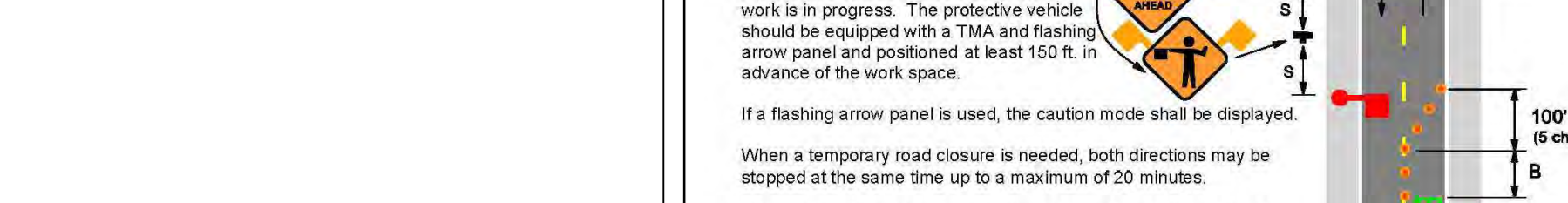
TRASH ENCLOSURE PLAN
NOT TO SCALE



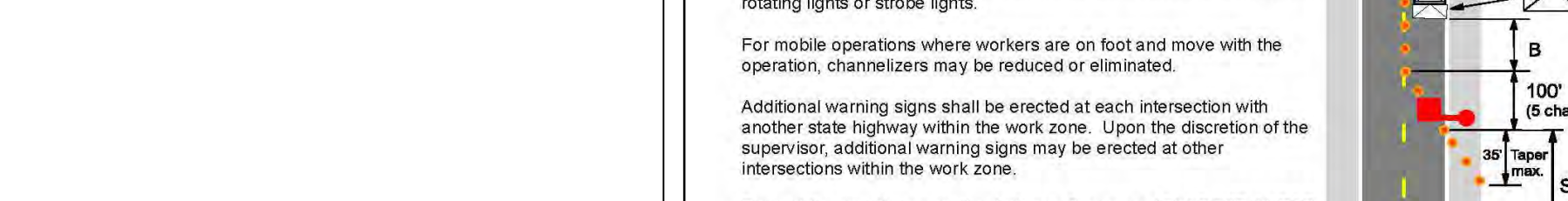
ELEVATION
NOT TO SCALE



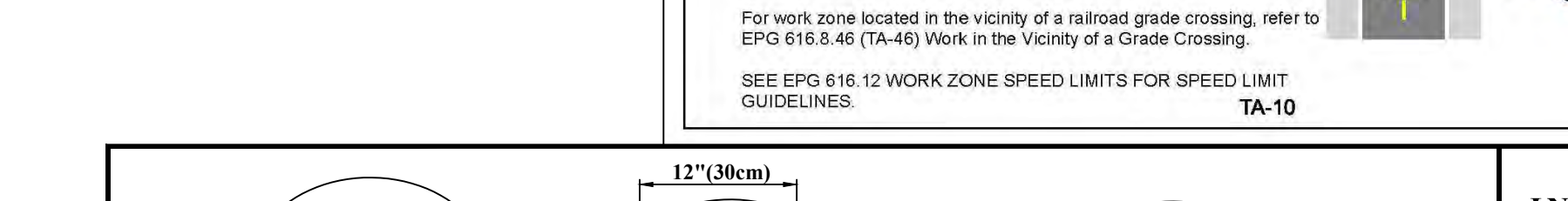
6" HIGH VINYL PRIVACY FENCE FOR TRASH ENCLOSURE
NOT TO SCALE



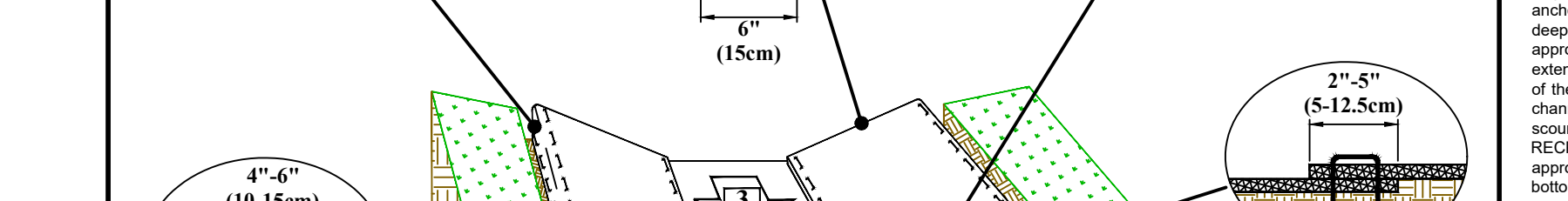
ELEVATION
NOT TO SCALE



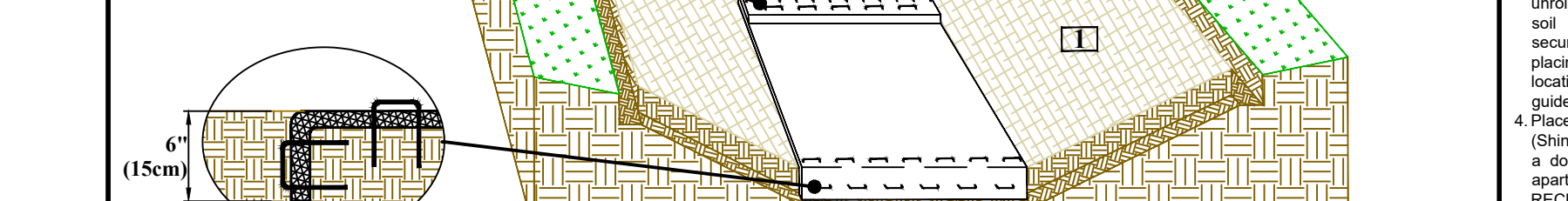
ELEVATION
NOT TO SCALE



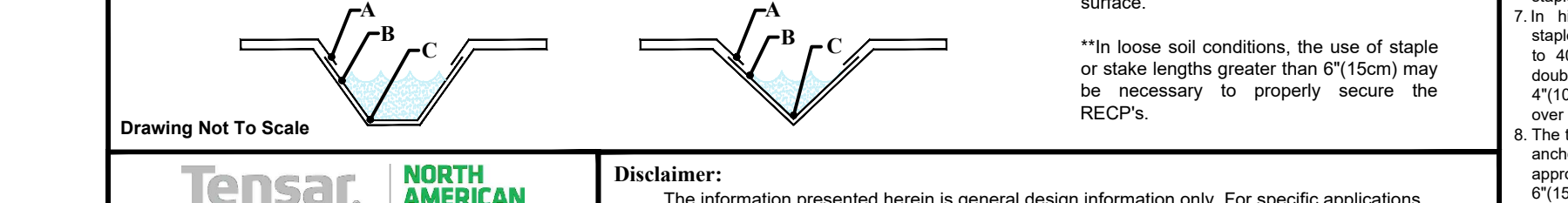
ELEVATION
NOT TO SCALE



ELEVATION
NOT TO SCALE



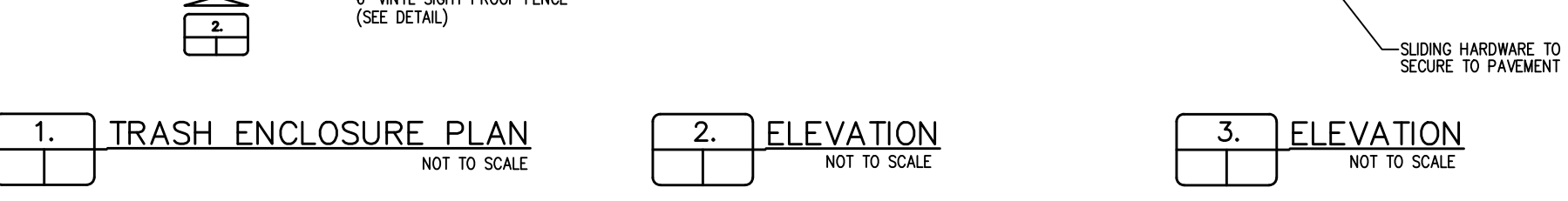
ELEVATION
NOT TO SCALE



ELEVATION
NOT TO SCALE



ELEVATION
NOT TO SCALE

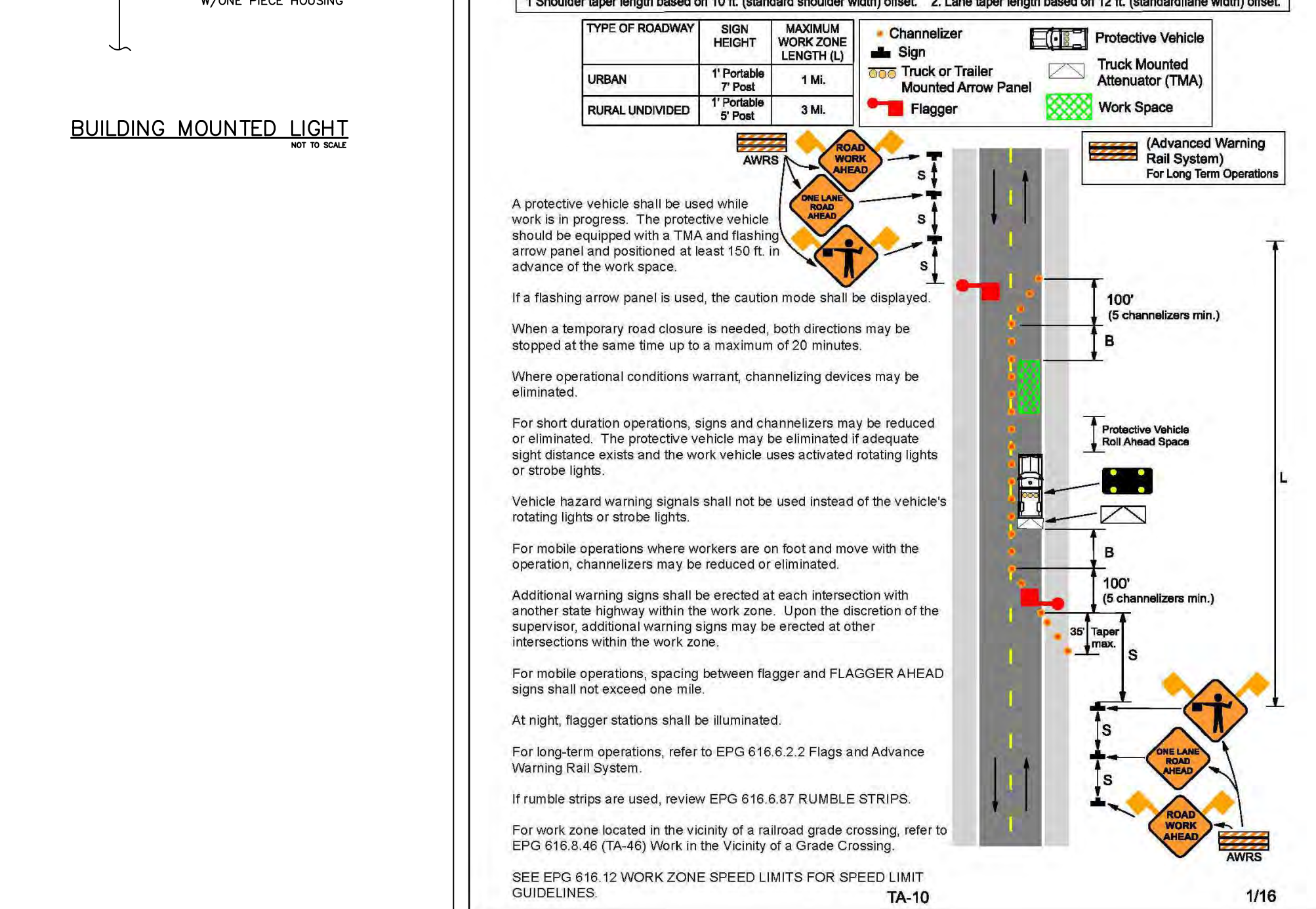


ELEVATION
NOT TO SCALE

616.8.10 (TA-10) Lane Closure on Two-Lane Highways With Edgelines Using Flaggers - MT

Permanent Posted (mph)	Sign Spacing (S)	Divided (S)	TAPER LENGTH (ft)	OPTIONAL BUFFER LENGTH (ft)	CHANNELIZER SPACING (ft)
0-35	200	-	-	280	40
40-45	350	-	-	400	80
50-55	500	-	-	580	80
60-70	1000	-	-	840	120

1 Shoulder taper length based on 10 ft. (standard shoulder width) offset. 2 Lane taper length based on 12 ft. (standard lane width) offset.



A protective vehicle shall be used while work is in progress. The protective vehicle should be equipped with a TMA and flashing arrow panel and positioned at least 150 ft. in advance of the work space.

If a flashing arrow panel is used, the caution mode shall be displayed.

When a temporary road closure is needed, both directions may be stopped at the same time up to a maximum of 20 minutes.

Where operational conditions warrant, channelizing devices may be eliminated.

For short duration operations, signs and channelizers may be reduced or eliminated. The protective vehicle may be eliminated if adequate sight distance exists and the work vehicle uses activated rotating lights or strobe lights.

Vehicle hazard warning signals shall not be used instead of the vehicle's rotating lights or strobe lights.

For mobile operators where workers are on foot and move with the operation, channelizers may be reduced or eliminated.

Additional warning signs shall be erected at each intersection with another state highway within the work zone. Upon the discretion of the supervisor, additional warning signs may be erected at other intersections within the work zone.

For mobile operators, spacing between flagger and FLAGGER AHEAD signs shall not exceed one mile.

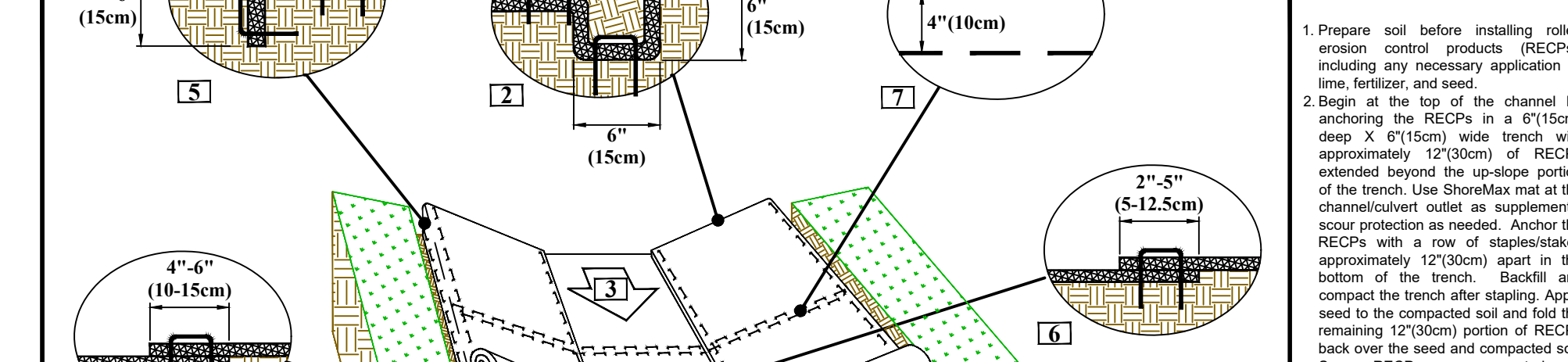
At night, flagger stations shall be illuminated.

For long-term operations, refer to EPG 616.6.2.2 Flags and Advance Warning Rail System.

If rumble strips are used, review EPG 616.6.8.7 RUMBLE STRIPS.

For work zone located in the vicinity of a railroad grade crossing, refer to EPG 616.8.46 (TA-46) Work in the Vicinity of a Grade Crossing.

SEE EPG 616.12 WORK ZONE SPEED LIMITS FOR SPEED LIMIT GUIDELINES.



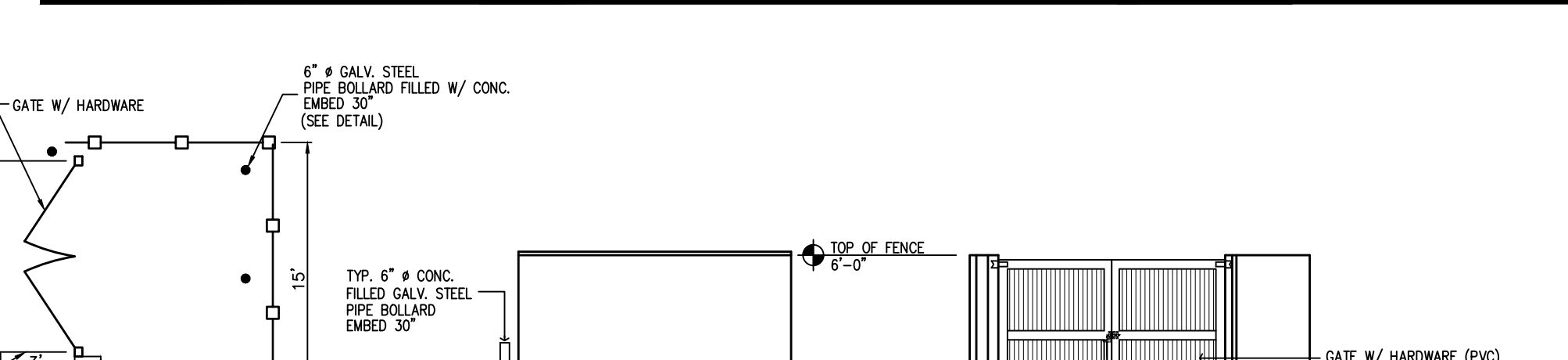
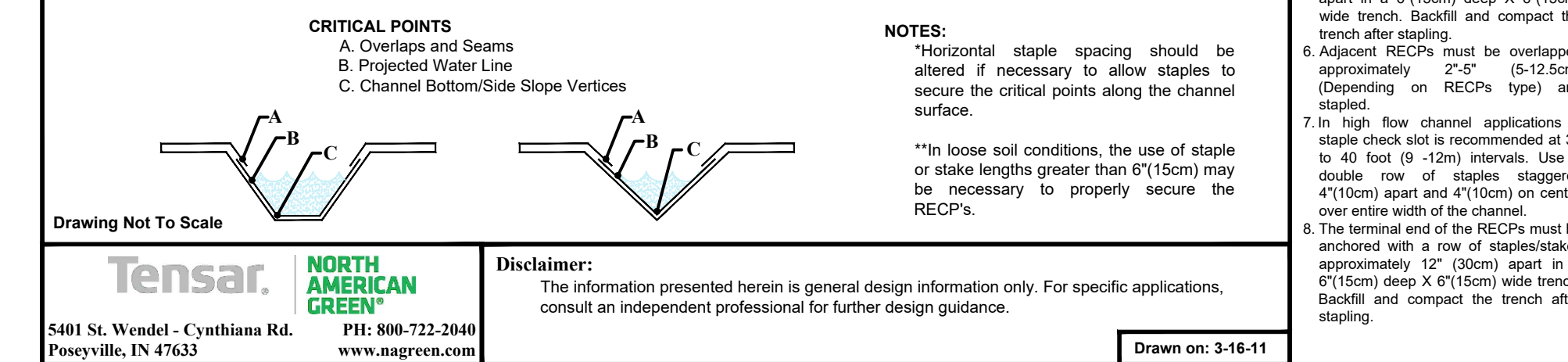
CHANNEL INSTALLATION DETAIL

- Prepare soil before installing rolled erosion control products (RECPs), including any necessary application of lime, fertilizer, and seed.
- Begin at the top of the channel by anchoring the RECPs in a 6" (15cm) deep X 6" (15cm) wide trench with approximately 12" (30cm) of RECPs extended beyond the up-slope portion of the trench. Use ShoreMax mat at the channelized outlet as supplemental scour protection as needed. Anchor the RECPs with a row of staples/stakes approximately 12" (30cm) apart in the bottom of the trench. Apply seed to the compacted soil and fold the remaining 12" (30cm) portion of RECPs back over the seed and compacted soil. Secure RECPs over compacted soil with a row of staples/stakes spaced approximately 12" (30cm) apart across the width of the RECPs.
- Roll center RECPs in direction of water flow in bottom of channel. RECPs will unroll with appropriate side against the soil surface. All RECPs must be securely fastened to soil surface by placing staples/stakes in appropriate locations as shown in the staple pattern guide.
- Place consecutive RECPs end-over-end (Shingle style) with a 4'-6" overlap. Use a double row of staples staggered 4" apart and 4" on center to secure RECPs.
- Full length edge of RECPs at top of side slopes must be anchored with a row of staples/stakes approximately 12" (30cm) apart in a 6" (15cm) deep X 6" (15cm) wide trench. Backfill and compact the trench after staping.
- Adjacent RECPs must be overlapped approximately 2'-5" (5-12.5cm) (Depending on RECPs type) and stapled.
- In high flow channel applications a staple check slot is recommended at 30 to 40 foot (9-12m) intervals. Use a double row of staples staggered 4" (10cm) apart and 4" (10cm) on center over entire width of the channel.
- The terminal end of the RECPs must be anchored with a row of staples/stakes approximately 12" (30cm) apart in a 6" (15cm) deep X 6" (15cm) wide trench. Backfill and compact the trench after staping.

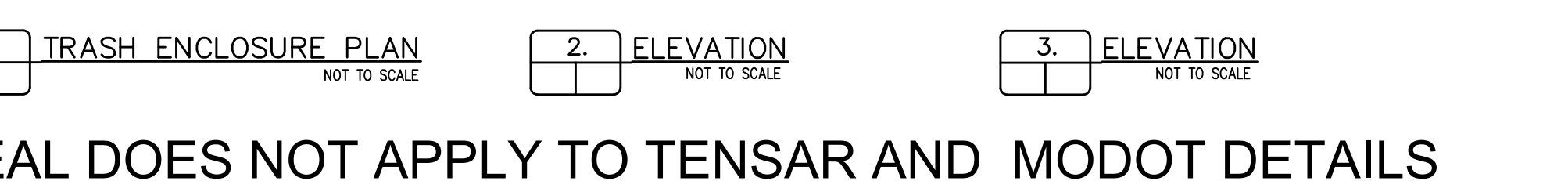
CRITICAL POINTS
A. Overlaps and Seams
B. Projected Water Line
C. Channel Bottom/Side Slope Vertices

NOTES:
Horizontal staple spacing should be altered if necessary to allow staples to secure the critical points along the channel surface.

"In loose soil conditions, the use of staple or stake lengths greater than 6" (15cm) may be necessary to properly secure the RECPs."



TRASH ENCLOSURE PLAN
NOT TO SCALE



ELEVATION
NOT TO SCALE

ELEVATION
NOT TO SCALE

ELEVATION
NOT TO SCALE

ELEVATION
NOT TO SCALE

ELEVATION
NOT TO SCALE

ELEVATION
NOT TO SCALE

ELEVATION
NOT TO SCALE

ELEVATION
NOT TO SCALE

ELEVATION
NOT TO SCALE

ELEVATION
NOT TO SCALE

ELEVATION
NOT TO SCALE

ELEVATION
NOT TO SCALE

ELEVATION
NOT TO SCALE

ELEVATION
NOT TO SCALE

ELEVATION
NOT TO SCALE

ELEVATION
NOT TO SCALE

ELEVATION
NOT TO SCALE

ELEVATION
NOT TO SCALE

ELEVATION
NOT TO SCALE

ELEVATION
NOT TO SCALE

ELEVATION
NOT TO SCALE

ELEVATION
NOT TO SCALE

ELEVATION
NOT TO SCALE

ELEVATION
NOT TO SCALE

ELEVATION
NOT TO SCALE

ELEVATION
NOT TO SCALE

ELEVATION
NOT TO SCALE

ELEVATION
NOT TO SCALE

ELEVATION
NOT TO SCALE

ELEVATION
NOT TO SCALE

ELEVATION
NOT TO SCALE

ELEVATION
NOT TO SCALE

ELEVATION
NOT TO SCALE

ELEVATION
NOT TO SCALE

ELEVATION
NOT TO SCALE

ELEVATION
NOT TO SCALE

ELEVATION
NOT TO SCALE

ELEVATION
NOT TO SCALE

ELEVATION
NOT TO SCALE

ELEVATION
NOT TO SCALE

ELEVATION
NOT TO SCALE

ELEVATION
NOT TO SCALE

ELEVATION
NOT TO SCALE

ELEVATION
NOT TO SCALE

ELEVATION
NOT TO SCALE

ELEVATION
NOT TO SCALE

ELEVATION
NOT TO SCALE

ELEVATION
NOT TO SCALE

ELEVATION
NOT TO SCALE

ELEVATION
NOT TO SCALE

ELEVATION
NOT TO SCALE

ELEVATION
NOT TO SCALE