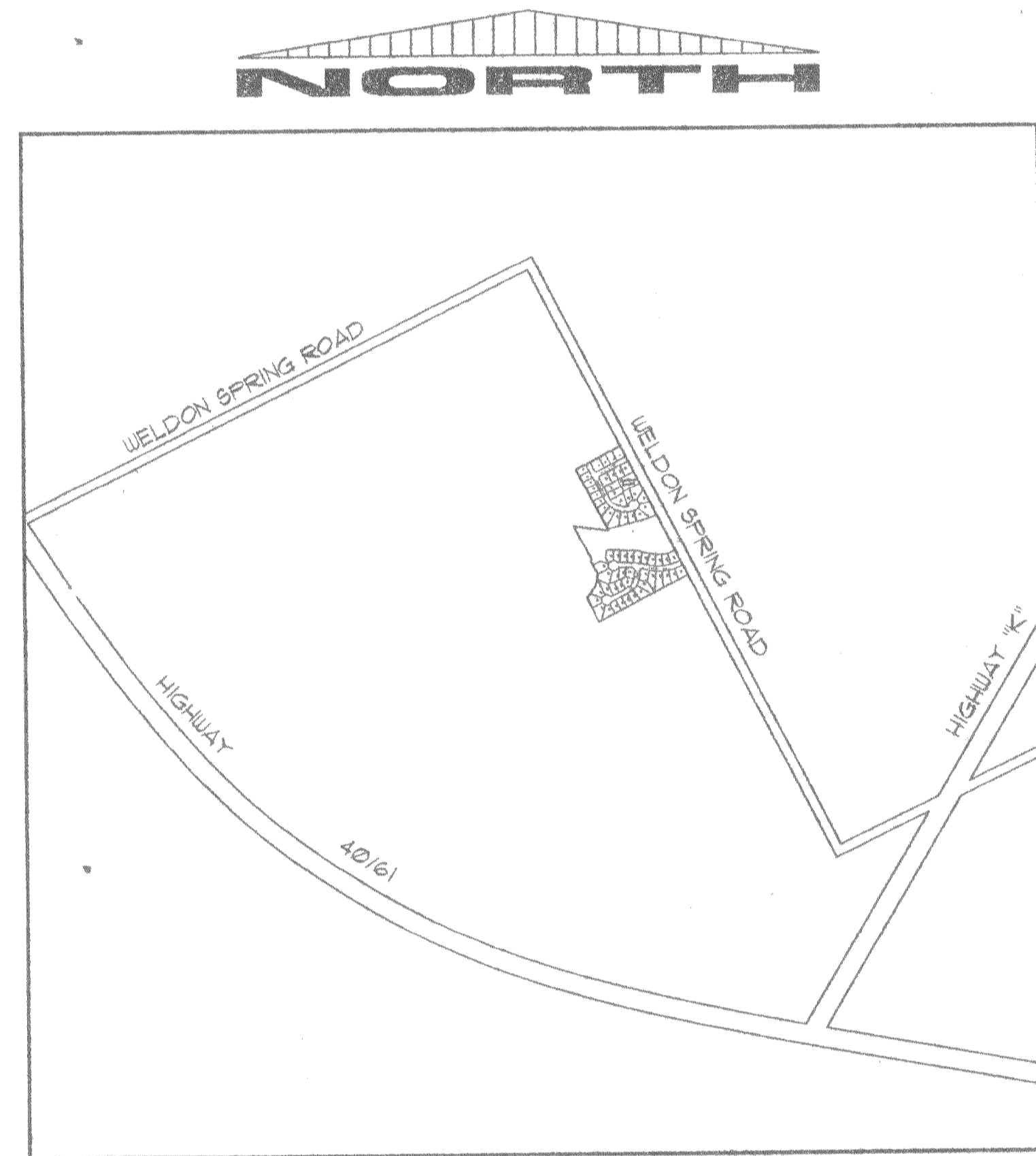


IMPROVEMENT PLANS FOR BROOKHAVEN

A TRACT OF LAND BEING PART OF LOT 4 OF COALTER'S OLD DARDENNE TRACT,
U.S. SURVEY 1669, TOWNSHIP 46 NORTH, RANGE 3 EAST,
ST. CHARLES COUNTY, MISSOURI



LOCATION MAP

N.T.S.

Benchmark: RM 37-Cheesed square on northeast corner of Weldon Spring Road bridge over Schote Creek
ELEVATION-506.11 (NGVD)

NEW	LEGEND	EXISTING
●	MANHOLE	○
■	INLET MANHOLE	□
■	INLET	□
■	DOUBLE INLET	□
○	MULTIPLE INLET	□
○	SANITARY DESIGNATOR	○
○	STORM DESIGNATOR	○
—	PIPE 6" THRU 18"	—
—	PIPE 21" THRU 108"	—
—	FLOWLINE OF CREEK OR DITCH	—
—	UNDERGROUND UTILITIES	—
—	FENCE	—
—	GUARD RAIL	—
+	TREE	+
○	BUSH	○
—	HEDGE ROW	—
▲	UTILITY METER OR VALVE	▲
—	POWER POLE & GUY	—
—	STREET SIGN	—
+	FIRE HYDRANT	+
—	LIGHT STANDARD	—
■	MAIL BOX	■
T.B.R. & R.	TO BE REMOVED AND REPLACED	
1234	DENOTES ADDRESS	

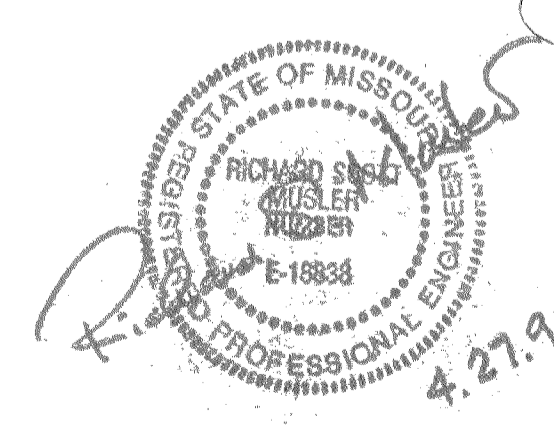
INDEX OF SHEETS

- 1 COVER SHEET
- 2 NOTES & SPECIFICATIONS
- 3 FLAT PLAN
- 4 GRADING PLAN
- 5 DRAINAGE AREA MAP
- 6 SANITARY SEWER PROFILES
- 7 SANITARY SEWER PROFILES
- 8 STORM SEWER PROFILES
- 9 STREET PROFILES
- CD1-CD5 CONSTRUCTION DETAILS

Prepared for:

ESSEX CONTRACTING, Inc.
c/o Mr. Brian Oliver
1519 McNutt Road
Herculaneum, MO 63058
(314) 931-4044

File Copy
APPROVED
D/19/98
Jan Cullum



DATE:	NO.:	REVISION:
APR 28		REVISION 1 COMMENTS FROM DESIGNED BY PALMER
FEB '98		

MUSLER ENGINEERING COMPANY
CIVIL ENGINEERING - PLANNING - LAND SURVEYING
6240 Mexico Road, St. Peters, Missouri 63376
Telephone: (314) 441-4555

DATE:	DRAWN:	CHECKED:	PROJECT NO.:	SHEET NO.:
FEB '98	MFV	ESM	91-283	