

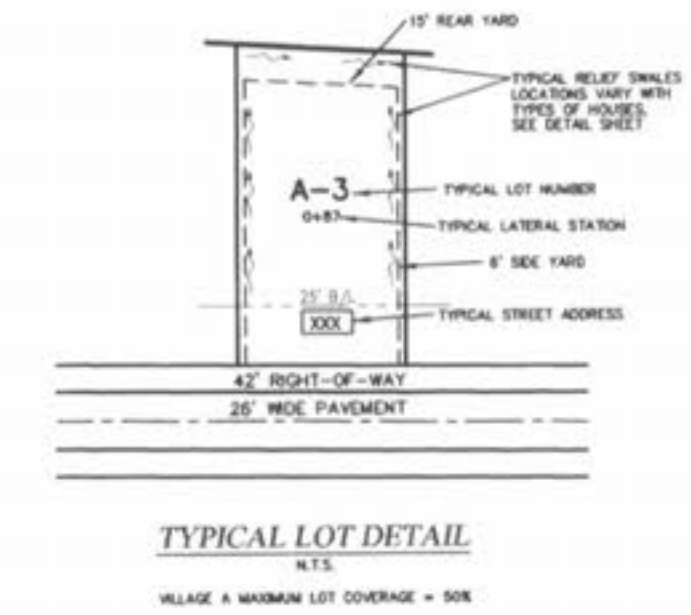
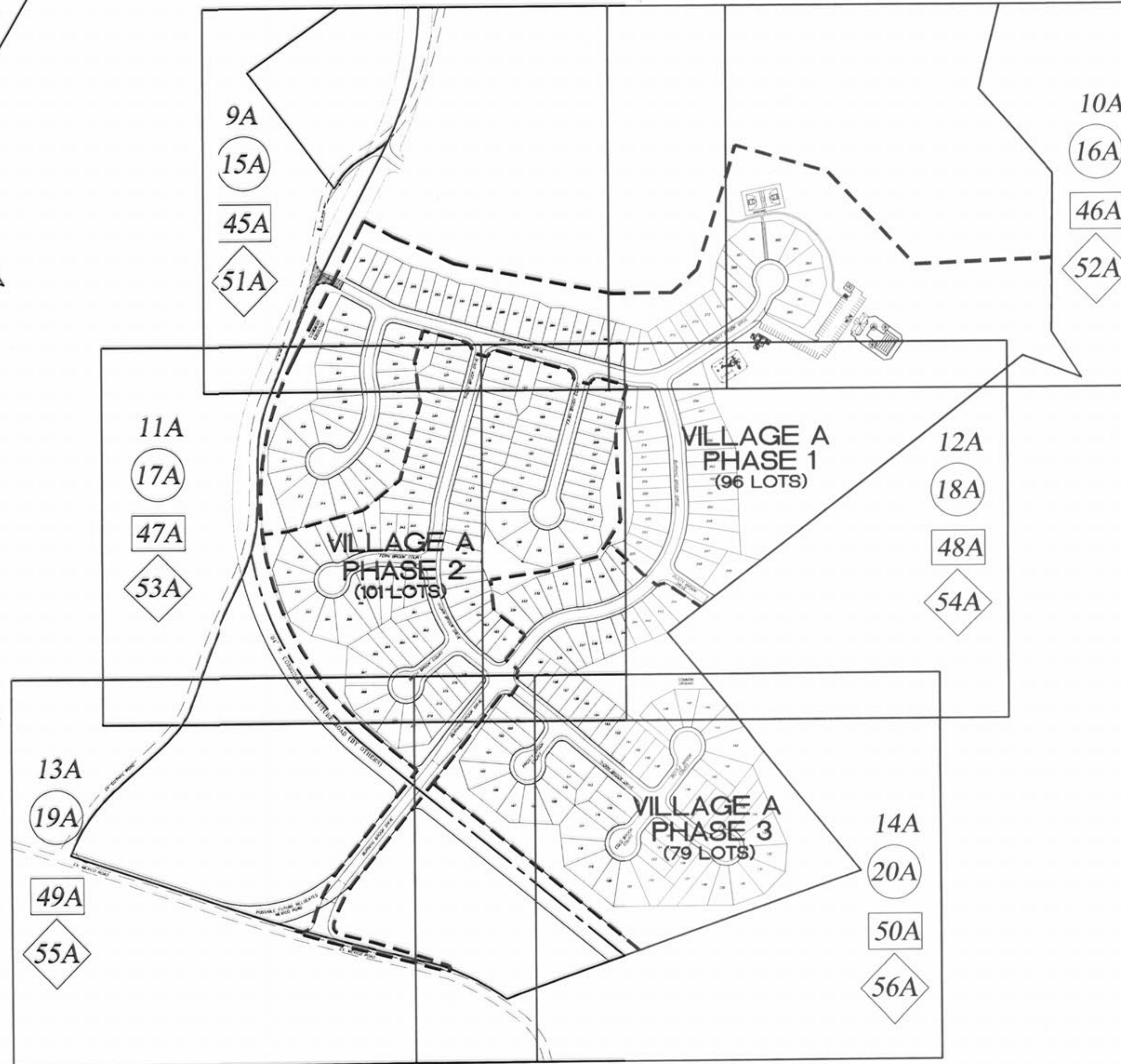
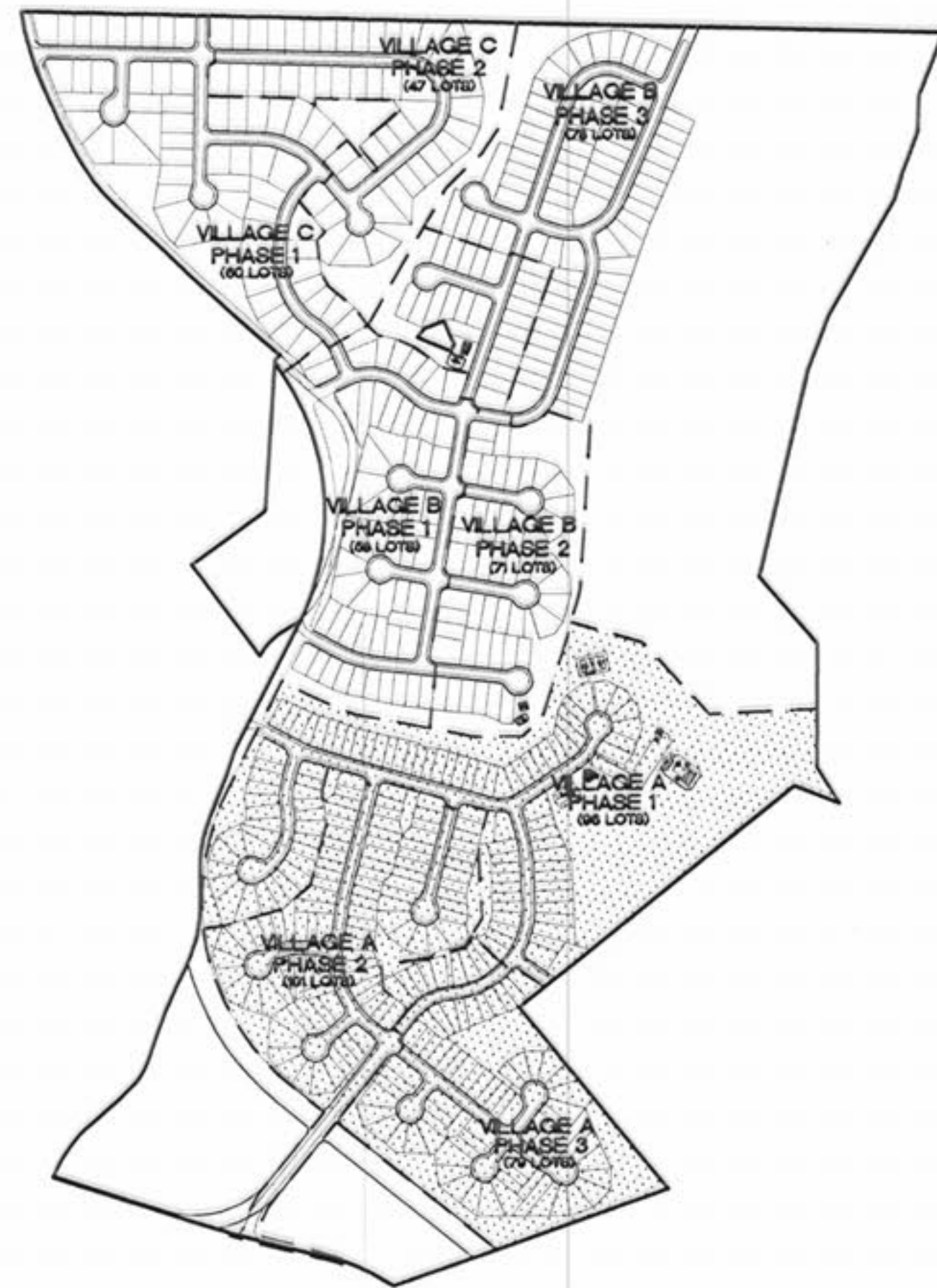
# BROOKSIDE

## VILLAGE A - IMPROVEMENT PLANS

(96 LOTS VILLAGE A PHASE 1)  
 (101 LOTS VILLAGE A PHASE 2)  
 (79 LOTS VILLAGE A PHASE 3)

### DRAWING INDEX

Sheet	Description
8A	VILLAGE "A" COVER SHEET
9A-14A	VILLAGE "A" SITE PLAN
15A-20A	VILLAGE "A" GRADING PLAN
21A-23A	VILLAGE "A" STREET PROFILES
24A	VILLAGE "A" BRUSHY BROOK DR. ENTRANCE DETAIL
25A	VILLAGE "A" MEXICO ROAD ENTRANCE DETAIL
26A-27A	VILLAGE "A" GUARDRAIL SHEETS
28A-30A	VILLAGE "A" SANITARY SEWER PROFILES
31A	VILLAGE "A" LIFT STATION SITE PLAN
32A-33A	VILLAGE "A" OFFSITE FORCE MAIN PLAN & PROFILE
34A-38A	VILLAGE "A" LIFT STATION DETAILS
39A-42A	VILLAGE "A" STORM SEWER PROFILES
43A-44A	VILLAGE "A" SPRING INTERCEPT SHEETS
45A-50A	VILLAGE "A" DRAINAGE AREA MAP
51A-56A	VILLAGE "A" WATER LAYOUT
57A-59A	VILLAGE "A" OFFSITE WATER PLAN
60A-65A	VILLAGE "A" LANDSCAPE PLAN
65A1	VILLAGE "A" POOL SITE
65A2	VILLAGE "A" RECREATION AREA



**NOTE:**  
 9A-14A SITE PLAN SHEETS  
 15A-20A GRADING PLAN SHEETS  
 45A-50A DRAINAGE AREA SHEETS  
 51A-56A WATER LAYOUT SHEETS

REVISIONS		
NO.	DATE	DESCRIPTION
2	6/14/05	REVISED SHEETS PER CLIENT 11A, 12A, 17A, 18A, 25A, 26A, 27A, 36A, 37A, 38A, 39A, 42A, 43A, 48A, 49A, 57A, 58A
3	8/11/05	REV. PER CITY COMMENTS 7/26/05
4	8/25/05	REV. ENTRANCES PER COUNTY
5	8/26/05	REV. PER CITY & CLIENT
6	9/19/05	REV. PER CITY COMMENTS 9/12/05
7	9/27/05	REV. SHEET 35A
8	10/28/05	SURPLUS A-JOINTS ELIMINATED
9	11/04/05	REV. WATER MAIN & OFF-SITE WATER
10	12/22/05	REV. SHEETS 32A, 33A, 52A, & 57A-59A
11	1/16/06	ADD AMENITY SHEETS 65A1 & 65A2
13	3/23/06	REV. SHEETS 9A-16A, 18A, 65A1, & 65A2

**PICKETT RAY & SILVER**  
 CIVIL ENGINEERS  
 PLANNERS  
 LAND SURVEYORS

333 Mid Rivers Mall Drive  
 St. Paul, MO 63176  
 Phone: (636) 987-1211  
 Fax: (636) 987-1104

**BROOKSIDE**  
 VILLAGE A  
 COVER SHEET

Prepared For:  
**SUMMIT POINTE L.C.**

239 FOX HILL ROAD  
 ST. CHARLES, MO 63101  
 (636) 940-0000

NO.	DATE	REVISIONS
1	8/14/05	REVISED PER CLIENT
2	8/17/05	REV. PER CITY COMMENTS 7/26/05
3	8/25/05	REV. ENTRANCES PER COUNTY
4	8/26/05	REV. PER CITY & CLIENT
5	9/19/05	REV. PER CITY COMMENTS 9/12/05
6	9/27/05	REV. SHEET 35A
7	10/28/05	SURPLUS A-JOINTS ELIMINATED
8	11/04/05	REV. WATER MAIN & OFF-SITE WATER
9	12/22/05	REV. SHEETS 32A, 33A, 52A, & 57A-59A
10	1/16/06	ADD AMENITY SHEETS 65A1 & 65A2
11	3/23/06	REV. SHEETS 9A-16A, 18A, 65A1, & 65A2

**ENGINEERS AUTHENTICATION**  
 The responsibility for professional engineering liability on this project is hereby limited to the set of plans authenticated by the seal, signature, and date hereunder attached. Responsibility is disclaimed for all other engineering plans involved in this project and specifically excludes revisions after this date unless reauthenticated.

**PICKETT, RAY & SILVER, INC.**

STATE OF MISSOURI  
 ELMER A. RAY  
 LICENSE NUMBER: E-16146  
 4/3/06

DRAWN	E.J.S.	DATE	02/14/05
CHECKED	D.W.D.	DATE	02/14/05
PROJECT # 03029.SUPO.01R			
TASK # 002 FIELD 847			
BOOK			

BROOKSIDE  
 VILLAGE A  
 COVER SHEET  
 SHEET **8A** OF 149

© Copyright 2005 by Pickett, Ray & Silver Inc.