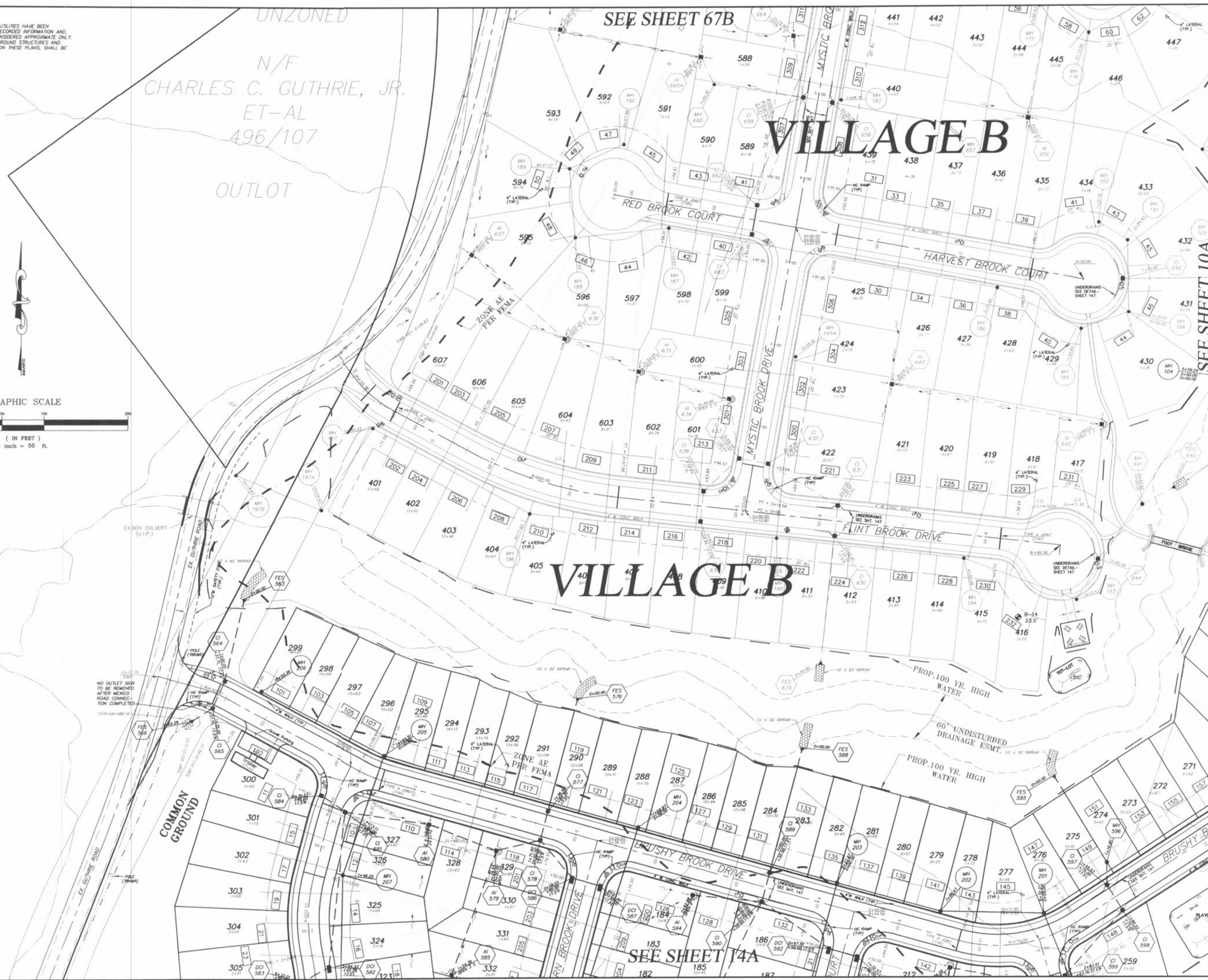
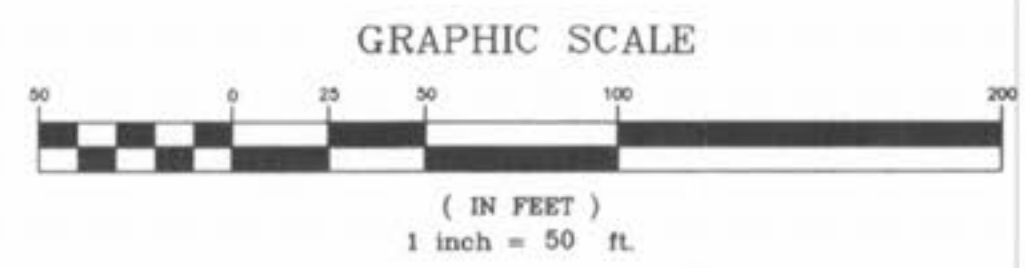


UTILITY NOTE:
 UNDERGROUND FACILITY STRUCTURES AND UTILITIES HAVE BEEN PLOTTED FROM AVAILABLE SURVEYS AND RECORDED INFORMATION AND, THEREFORE, THEIR LOCATIONS MUST BE CONSIDERED APPROXIMATE ONLY. VERIFICATION OF LOCATION OF ALL UNDERGROUND STRUCTURES AND FACILITIES EITHER SHOWN OR NOT SHOWN ON THESE PLANS, SHALL BE THE RESPONSIBILITY OF THE CONTRACTOR.

UNZONED
 N/F
 CHARLES C. GUTHRIE, JR.
 ET-AL
 496/107
 OUTLOT

SEE SHEET 67B

SEE SHEET 10A



PICKETT RAY & SILVER
 CIVIL ENGINEERS
 PLANNERS
 LAND SURVEYORS
 333 Mid Rivers Mall Drive
 St. Peters, MO 63376
 Phone (636) 397-1211
 Fax (636) 397-1104

BROOKSIDE VILLAGE A
 SITE PLAN
 Prepared For:
SUMMIT POINTE L.C.
 239 FOX HILL ROAD
 ST. CHARLES, MO 63301
 (636) 940-9300

REVISIONS

NO.	DATE	REV. PER CITY COMMENTS
1	8/11/05	REV. PER CITY COMMENTS 7/26/05
2	8/25/05	REV. PER CITY COMMENTS PER COUNTY
3	9/19/05	REV. PER CITY COMMENTS DATED 9/12/05
4	10/28/05	REV. PER CITY COMMENTS SUPPLEMENTAL A-JOINTS ELIMINATED
5	3/23/06	CORRECT LIGHT STD. LOCATIONS PER FRANK C.

ENGINEERS AUTHENTICATION
 The responsibility for professional engineering liability on this project is hereby limited to the set of plans authenticated by the seal, signature, and date hereunder attached. Responsibility is disclaimed for all other engineering plans involved in this project and specifically excludes revisions after this date unless reauthenticated.

PICKETT RAY & SILVER, INC.
 MISSOURI PROFESSIONAL ENGINEER
 DONALD S. TEMAN
 NUMBER
 E-23343

DRAWN	E.J.S.	DATE	02/14/05
CHECKED	D.W.D.	DATE	02/14/05
PROJECT #	03029_SUPO.01R		
TASK #	002	FIELD BOOK	847

VILLAGE A
 SITE PLAN
 SHEET 9A OF 149
 Copyright 2005 by Pickett, Ray & Silver, Inc.

P & Z NO. 2603.01

SEE SHEET 14A

I:\Server\Projects\03029\03029SUPO.01R.DWG, 3/24/2006 11:46:17 AM, DON DANSON