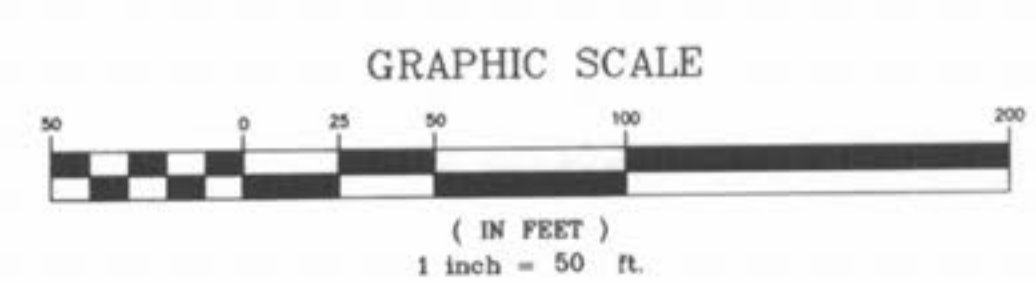


P & Z INVESTMENTS
 COMPANY, INC.
 1414/1244
 CITY OF O'FALLON
 ZONED I-2

UTILITY NOTE:
 UNDERGROUND FACILITY STRUCTURES AND UTILITIES HAVE BEEN PLOTTED FROM AVAILABLE SURVEYS AND RECORDED INFORMATION AND, THEREFORE, THEIR LOCATIONS MUST BE CONSIDERED APPROXIMATE ONLY. VERIFICATION OF LOCATION OF ALL UNDERGROUND STRUCTURES AND FACILITIES EITHER SHOWN OR NOT SHOWN ON THESE PLANS, SHALL BE THE RESPONSIBILITY OF THE CONTRACTOR.



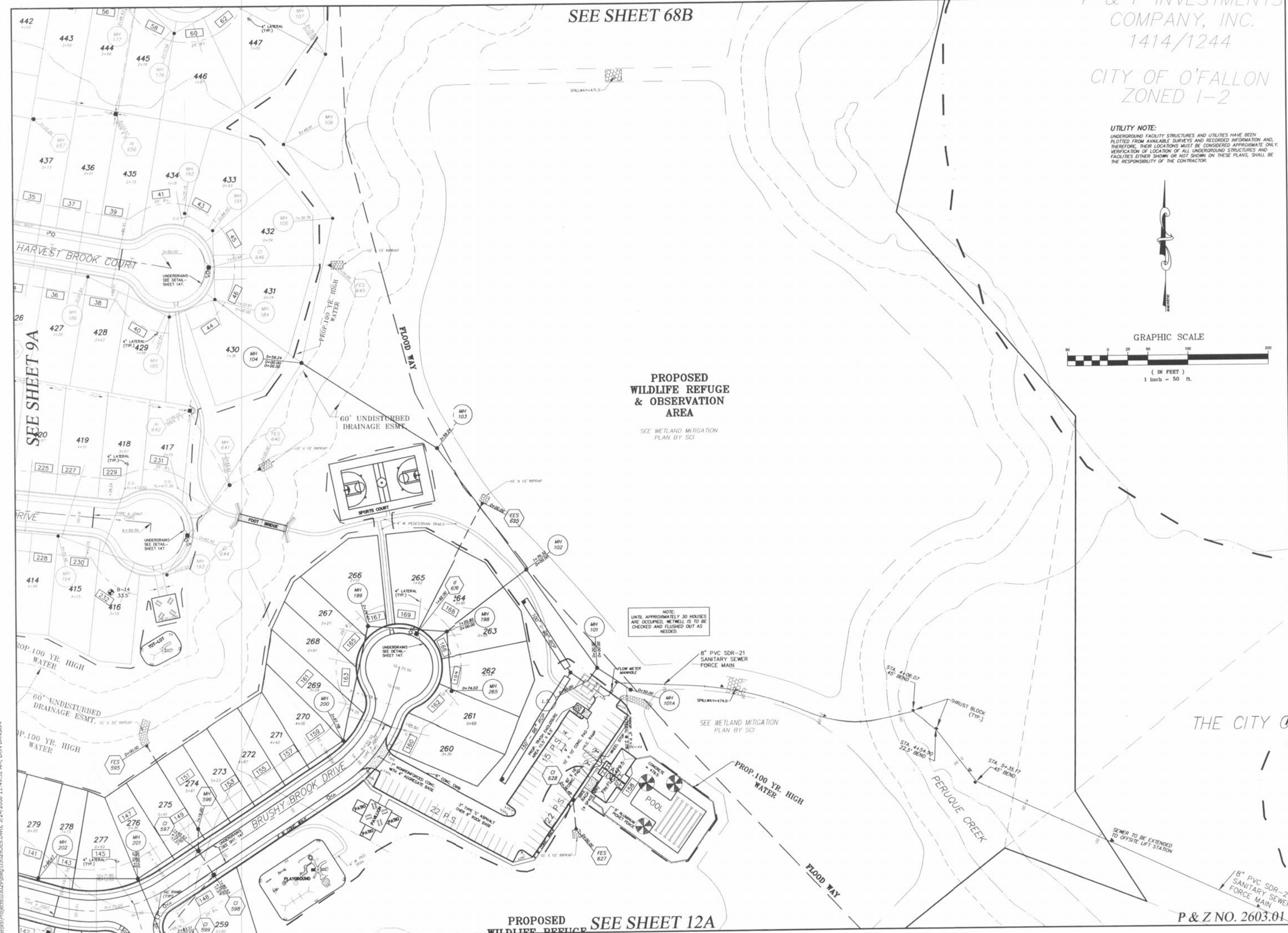
SEE SHEET 68B

**PROPOSED
 WILDLIFE REFUGE
 & OBSERVATION
 AREA**

SEE WETLAND MITIGATION
 PLAN BY SCI

NOTE:
 UNTIL APPROXIMATELY 30 HOUSES
 ARE OCCUPIED, WETWELL IS TO BE
 CHECKED AND FLOUSHED OUT AS
 NEEDED.

SEE WETLAND MITIGATION
 PLAN BY SCI



PROPOSED WILDLIFE REFUGE SEE SHEET 12A

P & Z NO. 2603.01

PICKETT RAY & SILVER
 CIVIL ENGINEERS
 PLANNERS
 LAND SURVEYORS

333 Mid Rivers Mall Drive
 St. Peters, MO 63376
 Phone (636) 397-1211
 Fax (636) 397-1104

**BROOKSIDE
 VILLAGE A**
 SITE PLAN

Prepared For:
SUMMIT POINTE L.C.

239 FOXHILL ROAD
 ST. CHARLES, MO 63301
 (636) 940-9300

NO.	DATE	REV.	PER CITY COMMENTS
1	8/11/05	1	REV. PER CITY COMMENTS 7/26/05
2	9/19/05	2	REV. PER CITY COMMENTS DATED 9/12/05
3	10/29/05	3	REV. PER CITY COMMENTS DATED 10/29/05
4	3/23/06	4	REV. PER CITY COMMENTS DATED 3/23/06

ENGINEERS AUTHENTICATION
 The responsibility for professional engineering liability on this project is hereby limited to the set of plans authenticated by the seal, signature, and date hereunder attached. Responsibility is disclaimed for all other engineering plans involved in this project and specifically excludes revisions after this date unless reauthenticated.

PROFESSIONAL ENGINEER
 DORIS S. TIEMAN
 LICENSE NUMBER 1000
 EXPIRES 12/31/06

DRAWN	E.J.S.	DATE	02/14/05
CHECKED	D.W.D.	DATE	02/14/05
PROJECT #	03029 SUPD.01R		
TASK #	002	FIELD BOOK	847

VILLAGE A
 SITE PLAN
 SHEET 10A OF 149
 © Copyright 2005 by Pickett, Ray & Silver, Inc.

I:\p\projects\03029\dwg\03029DES.DWG, 3/24/2006 11:49:32 AM, DON DANSON