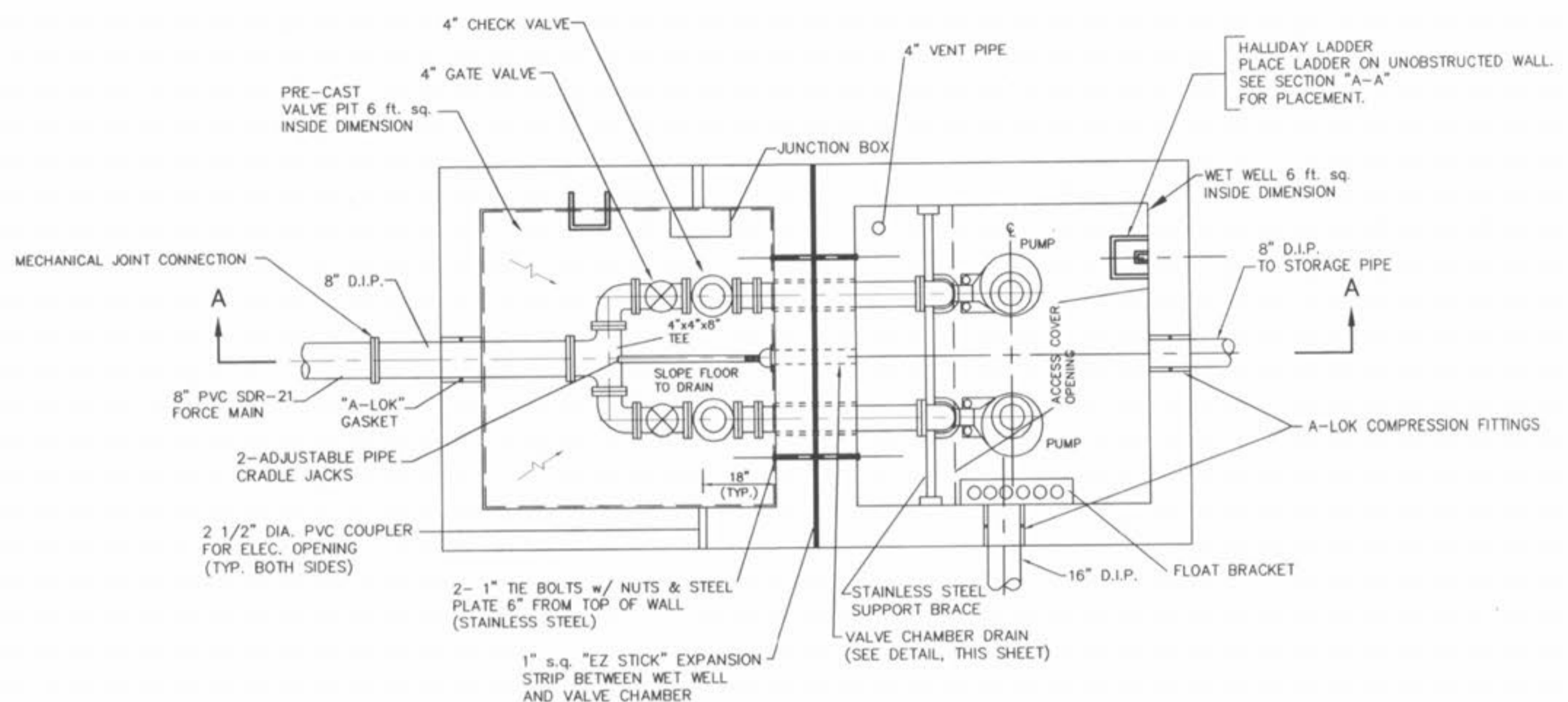


SECTION "A-A"
WET WELL AND VALVE CHAMBER
 SCALE: 1/2" = 1'-0"

NOTE: THESE PLANS HAVE BEEN PREPARED WITH SUPPLEMENTAL INFORMATION PROVIDED BY THE SUPPLIER OF THE MECHANICAL AND ELECTRICAL EQUIPMENT. THE CONTRACTOR AND THE SUPPLIER SHOULD VERIFY THAT THE DIMENSIONS SPECIFIED ON THESE STRUCTURAL AND MECHANICAL PLANS ARE ACCURATE AND CONFORM WITH THE EQUIPMENT TO BE INSTALLED PRIOR TO CONSTRUCTION.

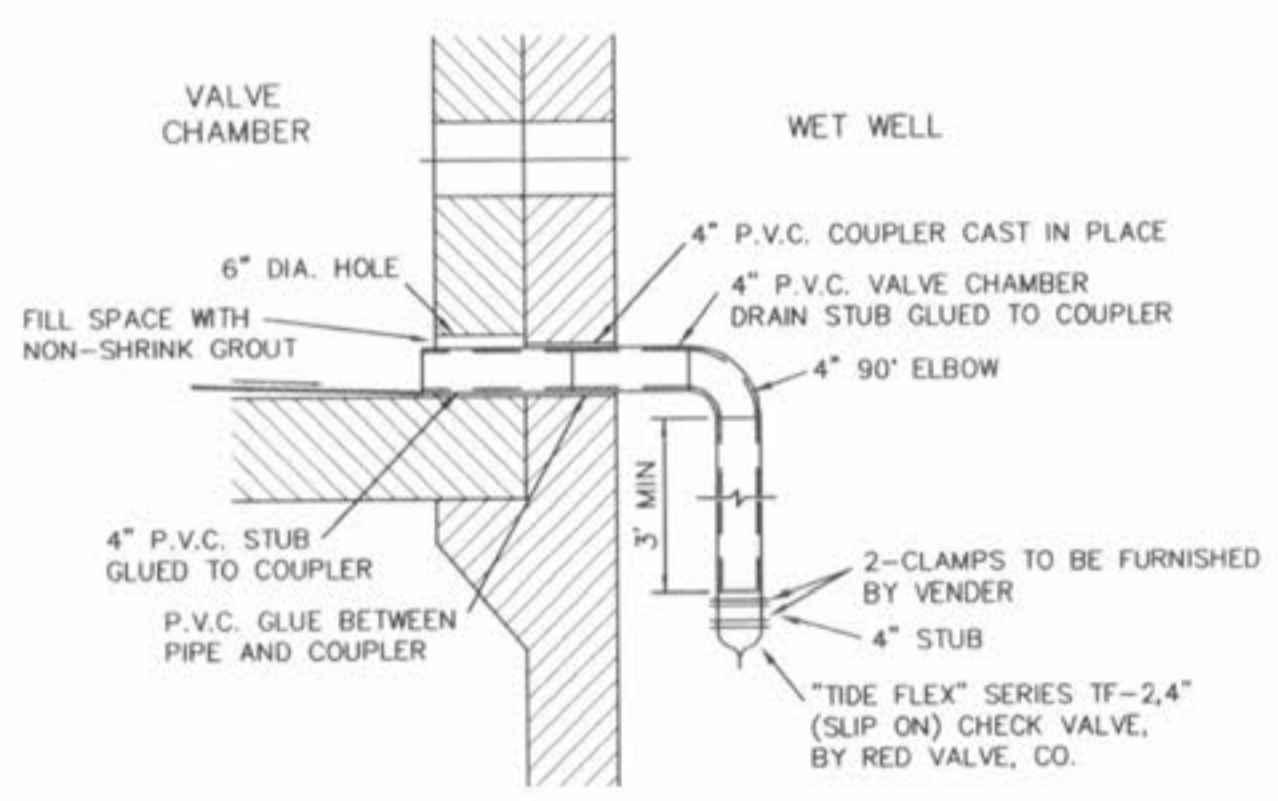
PUMP SHALL BE ABS MODEL AFP-1547 WITH 10.4 INCH IMPELLER, 25 HORSEPOWER MOTOR.
 ALTERNATE FLYGT MODEL NS3171.180 255mm IMPELLER, 30 HORSEPOWER MOTOR.

ELECTRIC CONTRACTOR SHALL PROVIDE AUTO DIALER FOR ALARMS FOR WET WELL LEVEL, POWER FAILURE, AND GENERATOR FAILURE.
 SURGE PROTECTION AND LIGHTNING ARRESTORS ARE REQUIRED FOR LIFTSTATION CONTROLS.



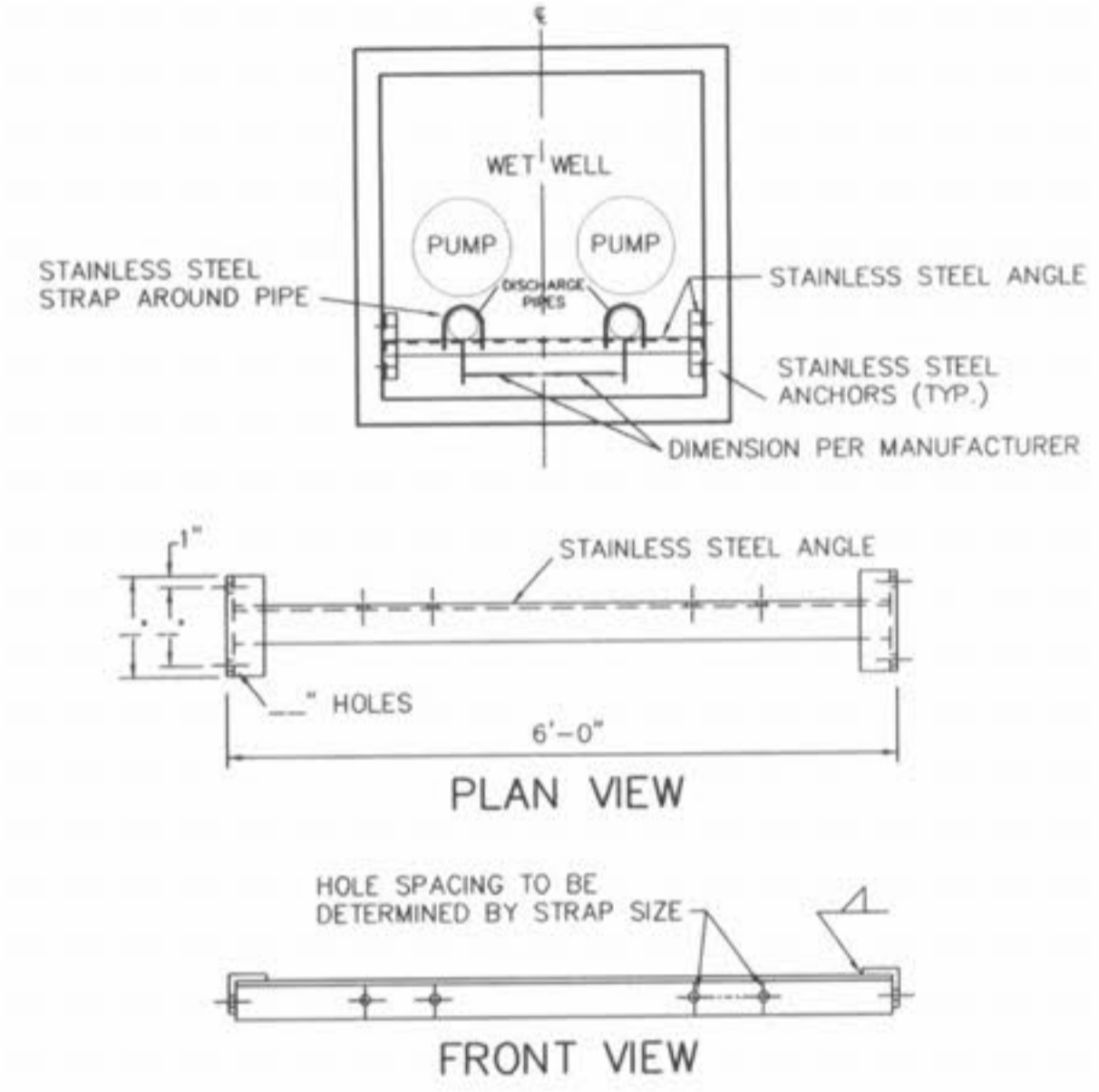
NOTES:
 1. ALL PIPING INSIDE LIFT STATION WILL BE CLASS 53 A.N.S.I. A-21.51 (AWWAC151).

WET WELL AND VALVE CHAMBER
 N.T.S.

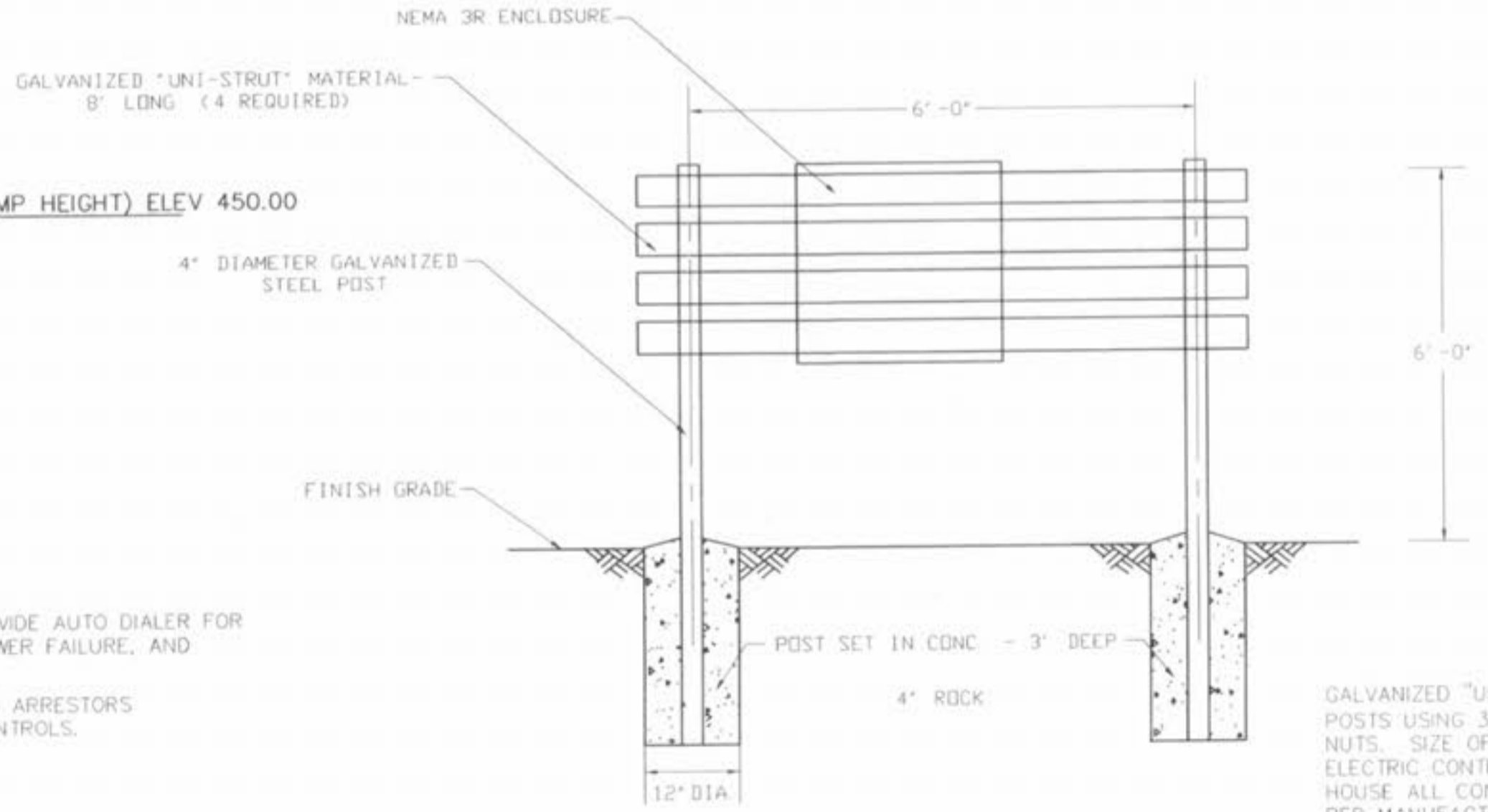


VALVE CHAMBER DRAIN DETAIL
 N.T.S.

NOTE: DEWATERING MAY BE REQUIRED FOR CONSTRUCTION OF THIS PUMP STATION & SEWERS



WET WELL PIPE SUPPORT BRACKET
 N.T.S.



CONTROL PANEL DETAIL
 N. T. S.

GALVANIZED "UNI-STRUT" MATERIAL SHALL BE FASTENED TO POSTS USING 3/8" CARRIAGE BOLTS WITH WASHERS AND NUTS. SIZE OF NEMA 4 ENCLOSURE TO BE DETERMINED BY ELECTRIC CONTRACTOR. IT SHALL BE LARGE ENOUGH TO HOUSE ALL CONTROLS NEEDED TO OPERATE PUMP STATION PER MANUFACTURERS RECOMMENDATIONS. USE 2 OR MORE NEMA ENCLOSURES IF NECESSARY. NEMA 4 ENCLOSURE(S) SHALL BE FASTENED TO GALVANIZED "UNI-STRUT" MATERIAL WITH 4-1/2" BOLTS WITH WASHERS AND NUTS.

PICKETT RAY & SILVER
 333 Mid Rivers Mall Drive
 St. Peters, MO 63376
 Phone (636) 397-1211
 Fax (636) 397-1104

**CIVIL ENGINEERS
 PLANNERS
 LAND SURVEYORS**

**BROOKSIDE
 VILLAGE A**
 MECHANICAL DETAILS SHEET

Prepared For:
SUMMIT POINT L.C.

239 FOX HILL ROAD
 ST. CHARLES, MO 63301
 636-940-9500

REVISIONS	NO.	DATE	DESCRIPTION
1	9/21/04	ADDED FLOW FROM KAPLAN PROPERTY	
2	8/11/05	REV. PER CITY COMMENTS 7/26/05	
3	9/19/05	REV. PER CITY COMMENTS 9/12/05	
4	9/27/05	REV. PUMP NOTE	

ENGINEERS AUTHENTICATION
 The responsibility for professional engineering liability on this project is hereby limited to the set of plans authenticated by the seal, signature, and date hereunder attached. Responsibility is disclaimed for all other engineering plans involved in this project and specifically excludes revisions after this date unless reauthenticated.

PICKETT RAY & SILVER, INC.
 STATE OF MISSOURI
HAROLD J. BARTCH
 REGISTERED PROFESSIONAL ENGINEER
 NUMBER 817751

DRAWN	DKL	DATE	08-10-04
CHECKED	EAK	DATE	08-10-04
PROJECT #	03029 SUP0.01R		
TASK #	4 FIELD BOOK		

VILLAGE A
 OFF-SITE FORCE MAIN
 LIFT STATION MECHANICAL DETAILS
 SHEET **35A** OF 149

© Copyright 2005 by Pickett, Ray & Silver Inc.

I:\sewer\projects\03029.dwg\03029-DE\AALS.dwg, 10/10/2005 3:24:24 PM, NICK