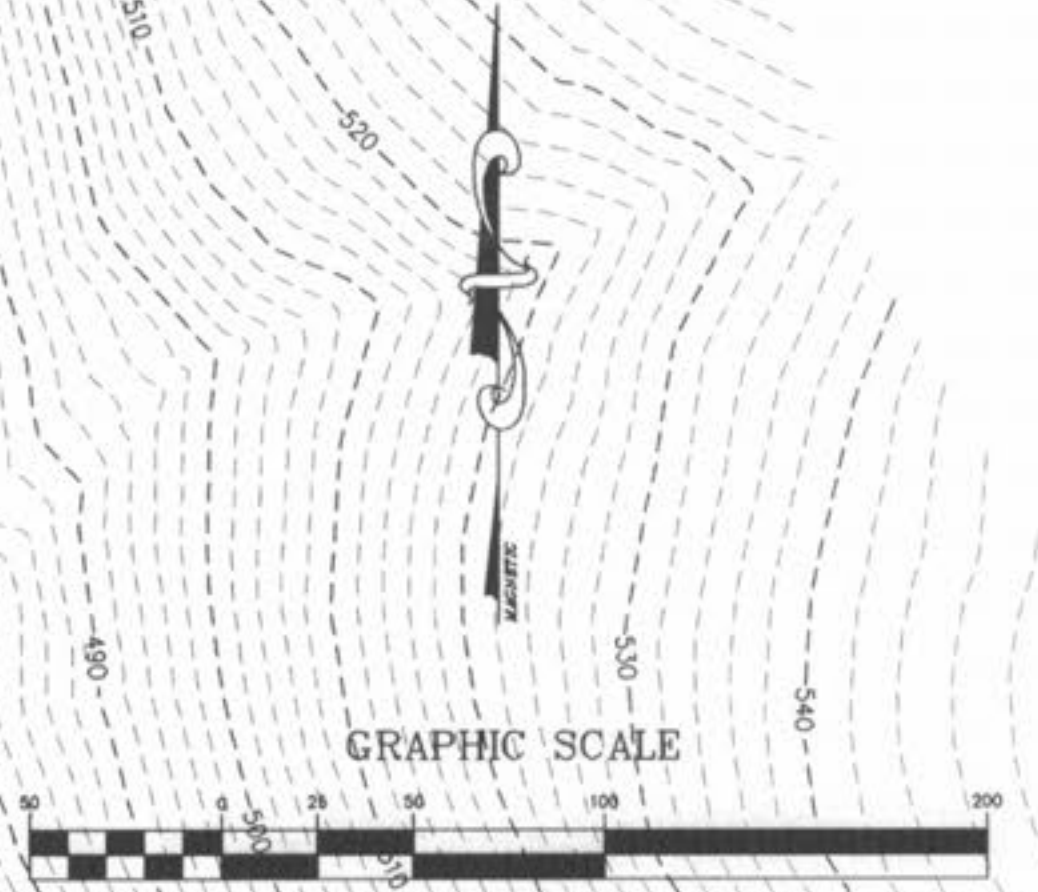


SEE SHEET 105B

SEE SHEET 60A

**UTILITY NOTE:**  
 UNDERGROUND FACILITY STRUCTURES AND UTILITIES HAVE BEEN PLOTTED FROM AVAILABLE SURVEYS AND RECORDED INFORMATION AND, THEREFORE, THEIR LOCATIONS MUST BE CONSIDERED APPROXIMATE ONLY. VERIFICATION OF ALL UNDERGROUND STRUCTURES AND FACILITIES EITHER SHOWN OR NOT SHOWN ON THESE PLANS, SHALL BE THE RESPONSIBILITY OF THE CONTRACTOR.



PROPOSED WILDLIFE REFUGE & OBSERVATION AREA  
 SEE WETLAND MITIGATION PLAN BY SCI

STREET TREE  
 ALL LANDSCAPING TO CONFORM TO CITY OF O'FALLON ORDINANCES  
 SEE NOTES ON SHEET 2

PLANS FOR ALL AMENITIES, SPORTS COURT, PLAYGROUNDS, PAVILIONS, POOL AND BATH HOUSE ETC. WILL BE IN A SEPARATE SUBMITTAL.

60' UNDISTURBED DRAINAGE ESMT.

60' UNDISTURBED DRAINAGE ESMT.

SEE WETLAND MITIGATION PLAN BY SCI

SEE SHEET 63A

PROPOSED WILDLIFE REFUGE

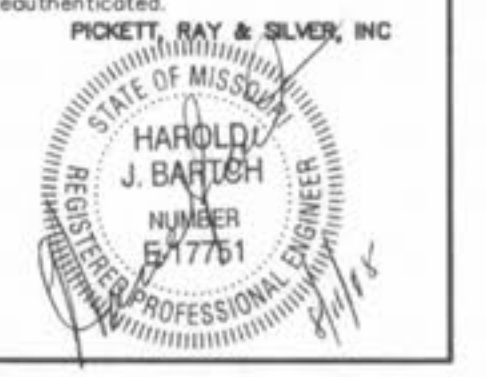
INVESTMENTS COMPANY, INC.  
 1414/1244  
 CITY OF O'FALLON  
 ZONED R-2

**PICKETT RAY & SILVER**  
 CIVIL ENGINEERS  
 PLANNERS  
 LAND SURVEYORS  
 335 Mid Rivers Mall Drive  
 St. Peters, MO 63376  
 Phone (636) 397-1211  
 Fax (636) 397-1104

**BROOKSIDE VILLAGE A**  
 LANDSCAPE PLAN  
 Prepared For:  
 SUMMIT POINTE L.C.  
 239 FOX HILL ROAD  
 FOX HILL, MO 63091  
 (636) 946-9300

REV. NO.	DATE	REV. PER CITY COMMENTS
3	8/11/05	

**ENGINEERS AUTHENTICATION**  
 The responsibility for professional engineering liability on this project is hereby limited to the set of plans authenticated by the seal, signature, and date hereunder attached. Responsibility is disclaimed for all other engineering plans involved in this project and specifically excludes revisions after this date unless reauthenticated.



DRAWN	E.J.S.	DATE	02/14/05
CHECKED	D.W.D.	DATE	02/14/05
PROJECT #	03029 SUPD.01R	TASK #	002 FIELD BOOK 847

VILLAGE A LANDSCAPE PLAN  
 SHEET 61A OF 149  
 © Copyright 2005 by Pickett, Ray & Silver, Inc.

P & Z NO. 2603.01

I:\enr\proj\proj03029\dwg\0302906ES.DWG, 8/11/2005 11:52:00 AM, NICK