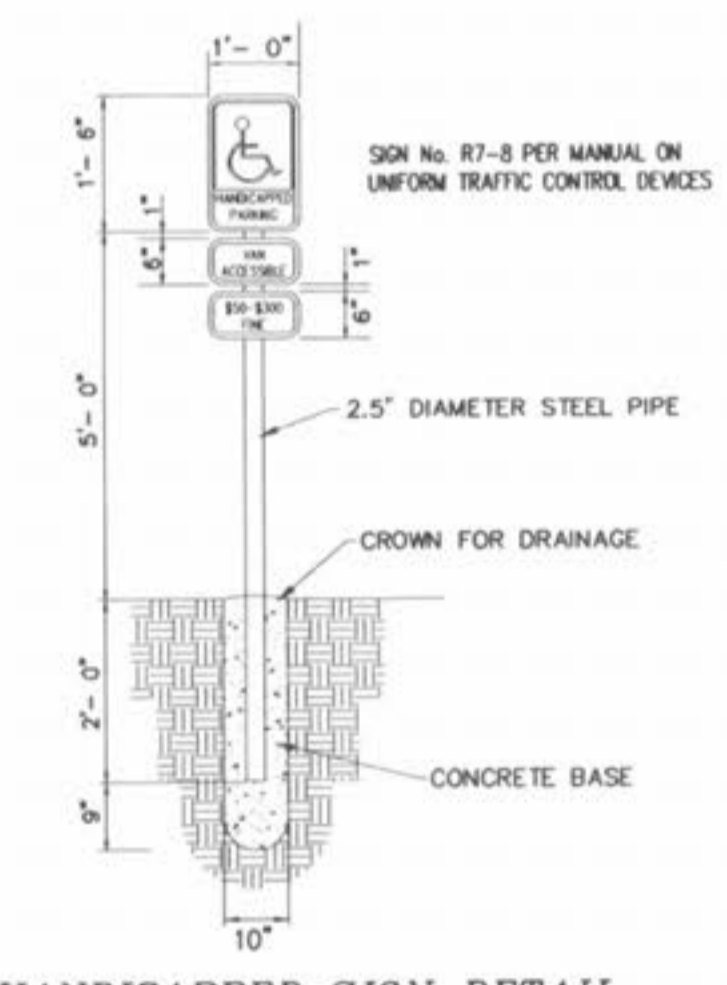
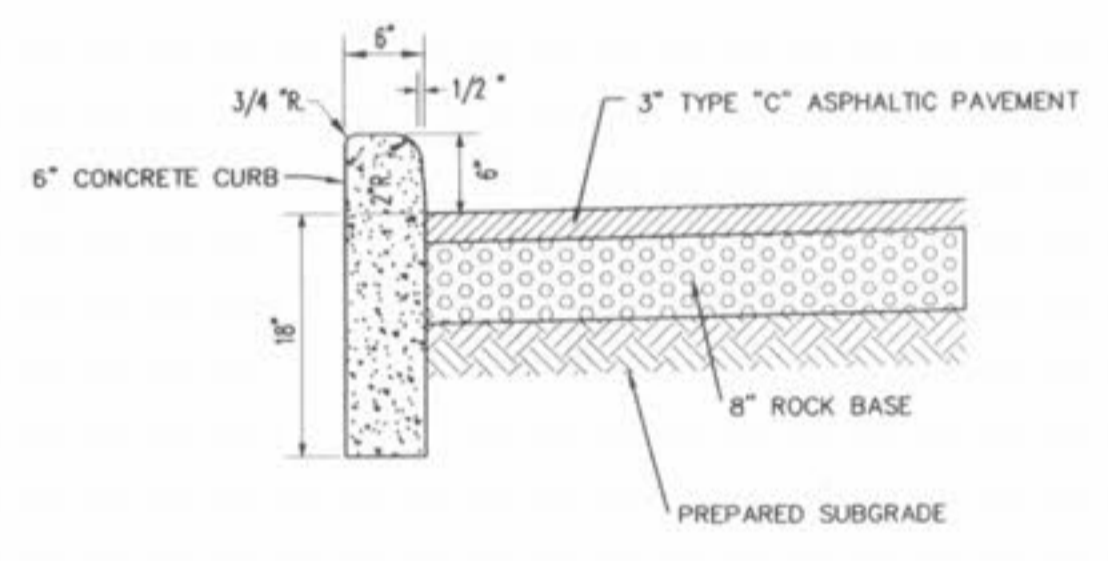


NOTE: UNTIL APPROXIMATELY 30 HOUSES ARE OCCUPIED, WETWELL IS TO BE CHECKED AND FLUSHED OUT AS NEEDED.

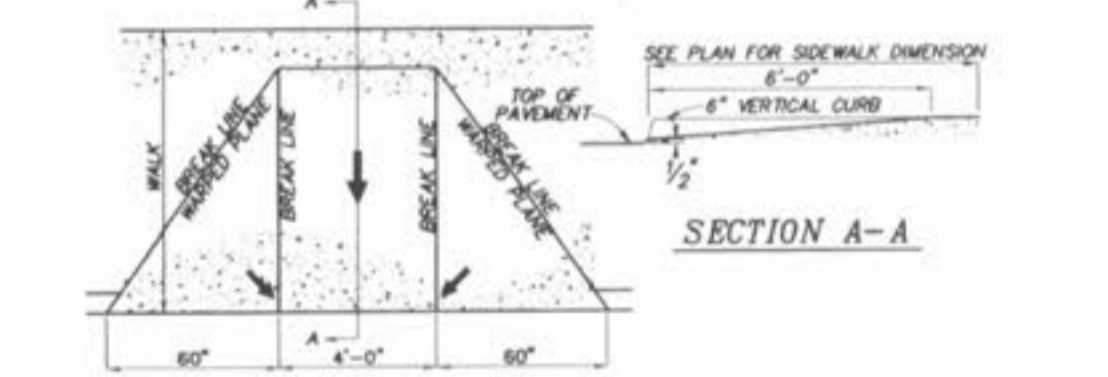
REAR & SIDE VIEW OF TRASH ENCLOSURE N.T.S.



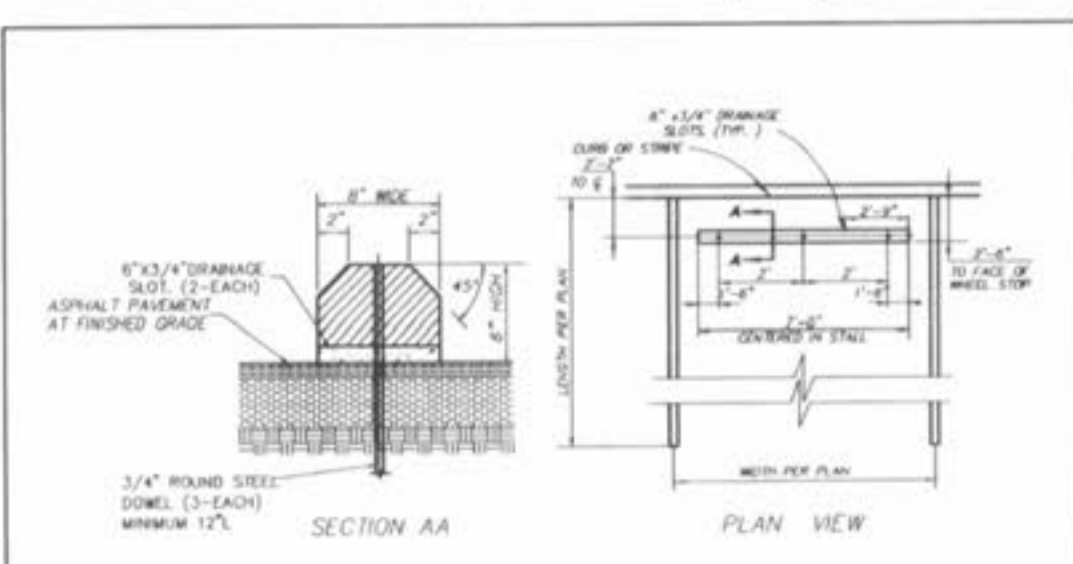
HANDICAPPED SIGN DETAIL N.T.S.



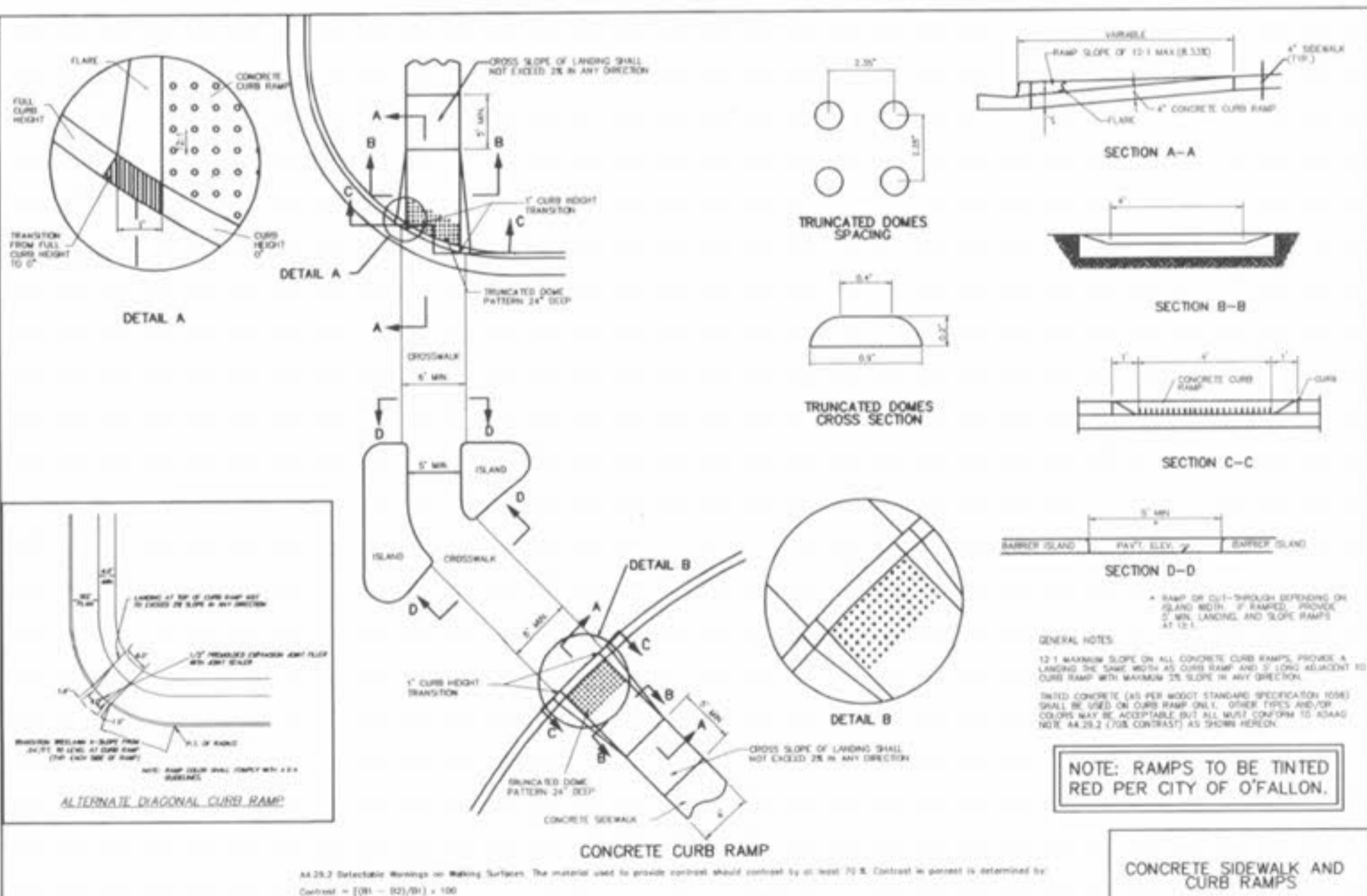
PAVEMENT DETAIL N.T.S.



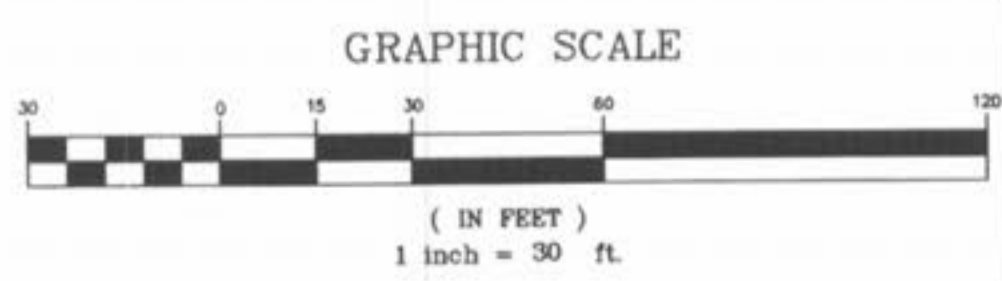
STRAIGHT CURB HANDICAPPED RAMP DETAIL N.T.S. WHERE SHOWN ON PLANS ONLY



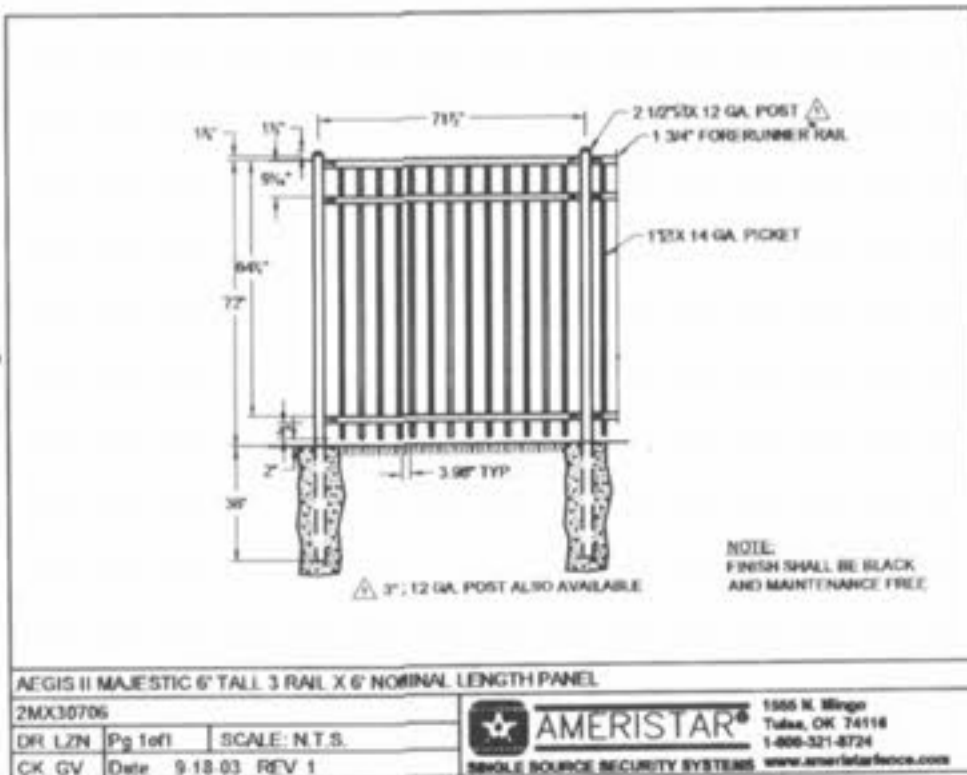
WHEEL STOP DETAIL N.T.S.



CONCRETE CURB RAMP



UTILITY NOTE:
UNDERGROUND FACILITY STRUCTURES AND UTILITIES ARE BEING PLOTTED FROM AVAILABLE SURVEYS AND RECORDED INFORMATION AND, THEREFORE, THEIR LOCATIONS MUST BE CONSIDERED APPROXIMATE ONLY. VERIFICATION OF LOCATION OF ALL UNDERGROUND STRUCTURES AND FACILITIES EITHER SHOWN OR NOT SHOWN ON THESE PLANS, SHALL BE THE RESPONSIBILITY OF THE CONTRACTOR.



PLAYGROUND NOTE:
4\"/>

BIKE RACK NOTE:
DETAILS OF THE PROPOSED BIKE RACK ARE TO BE SUBMITTED TO THE CITY AFTER A VENDOR IS SELECTED. BIKE RACK IS TO BE SIMILAR TO THE EXISTING ONES ALREADY IN USE AT OTHER SUMMIT POINTE DEVELOPMENTS IN THE CITY OF O'FALLON. (4 SPACES MIN.)

LANDSCAPE NOTE:
ALL PROPOSED LANDSCAPING IS TO CONFORM TO CITY OF O'FALLON ORDINANCES. SEE LANDSCAPING NOTES ON COVER SHEET.

POOL / BATHHOUSE PARKING CALCULATIONS
1 PARKING SPACE / 10 UNITS
590 LOTS = 59 PARKING SPACES REQUIRED
= 60 PARKING SPACES PROVIDED
2 H.C. SPACES REQUIRED
2 H.C. SPACES PROVIDED

HANDICAPPED ACCESSIBLE PARKING SPACES HAVE BEEN PROVIDED IN ACCORDANCE WITH ADA GUIDELINES ADDRESS: 158 BRUSHY BROOK DRIVE

PICKETT RAY & SILVER
CIVIL ENGINEERS
PLANNERS
LAND SURVEYORS
333 Mid Rivers Mall Drive
St. Charles, MO 63376
Phone (636) 397-1211
Fax (636) 397-1104

BROOKSIDE VILLAGE A
POOL SITE
Prepared For:
SUMMIT POINTE, L.C.

NO.	DATE	ADD AMENDMENT SHEET TO PLANS	REV. PER CITY COMMENTS
1	1/16/06		
2	3/25/06		

ENGINEERS AUTHENTICATION
The responsibility for professional engineering liability on this project is hereby limited to the set of plans authenticated by the seal, signature, and date hereunder attached. Responsibility is disclaimed for all other engineering plans involved in this project and specifically excludes revisions after this date unless reauthenticated.

PROFESSIONAL ENGINEER
S. TIEMAN
NUMBER 1714
E-23354

DRAWN NSG **DATE** 09/12/05
CHECKED DWD **DATE** 09/12/05
PROJECT # 03029 SUPD.01R
TASK # 002 FIELD 847
BOOK

BROOKSIDE VILLAGE A POOL SITE
SHEET 65A1 OF 149
© Copyright 2005 by Pickett, Ray & Silver, Inc.