

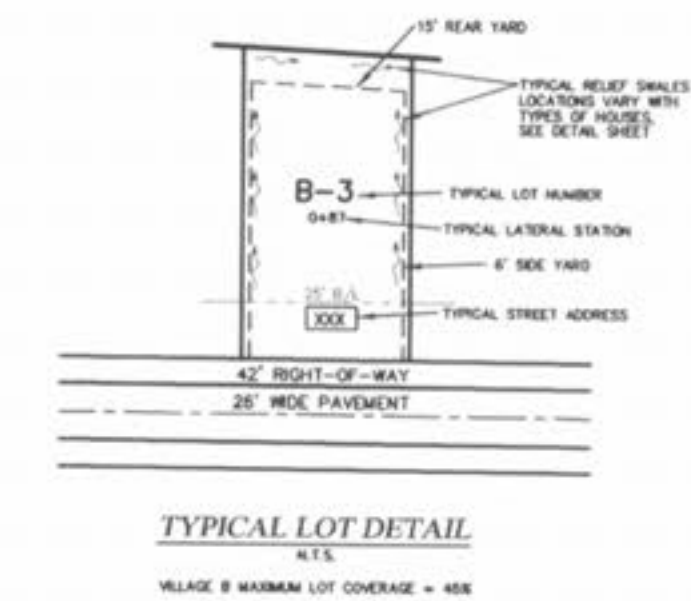
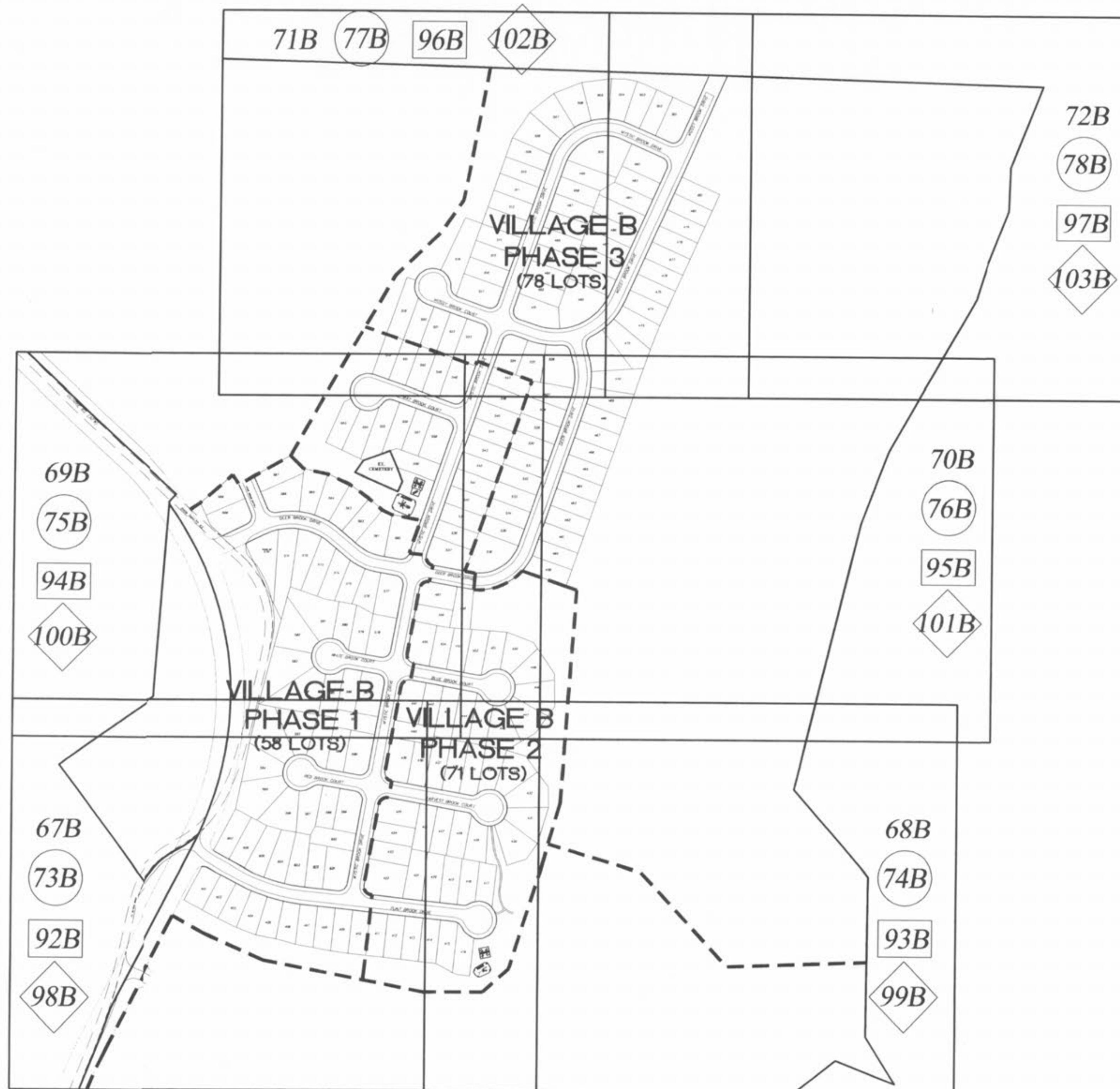
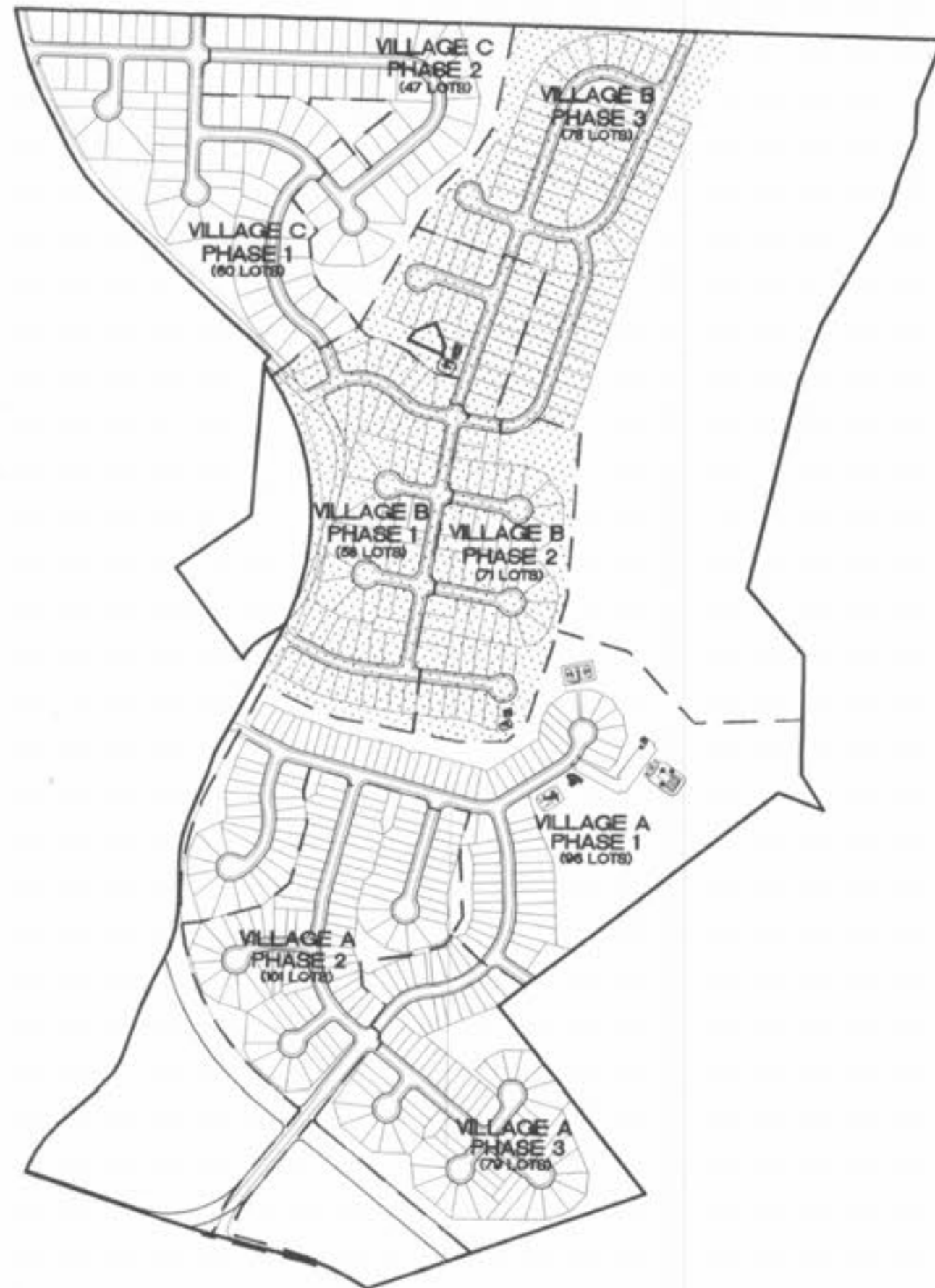
# BROOKSIDE

## VILLAGE B - IMPROVEMENT PLANS

(58 LOTS VILLAGE B PHASE 1)  
 (71 LOTS VILLAGE B PHASE 2)  
 (78 LOTS VILLAGE B PHASE 3)

### DRAWING INDEX

Sheet	Description
66B	VILLAGE "B" COVER SHEET
67B-72B	VILLAGE "B" SITE PLAN
73B-78B	VILLAGE "B" GRADING PLAN
79B-82B	VILLAGE "B" STREET PROFILES
83B	VILLAGE "B" FLINT BROOK DR. ENTRANCE DETAIL
84B	VILLAGE "B" DEER BROOK DR. ENTRANCE DETAIL
85B-87B	VILLAGE "B" SANITARY SEWER PROFILES
88B-91B	VILLAGE "B" STORM SEWER PROFILES
92B-97B	VILLAGE "B" DRAINAGE AREA MAP
98B-103B	VILLAGE "B" WATER LAYOUT
104B-109B	VILLAGE "B" LANDSCAPE PLAN



REVISIONS		
NO.	DATE	DESCRIPTION
3	8/11/05	REV. PER CITY COMMENTS 7/26/05
4	8/25/05	REV. ENTRANCES PER COUNTY
5	8/26/05	REV. SHEETS 69B, 75B, 88B & 94B PER CITY & CLIENT
6	9/19/05	REV. PER CITY COMMENTS 9/12/05
8	10/28/05	SURPLUS A-JOINTS & SHOT-ROCK WALL ELIMINATED
9	11/04/05	REV. WATER MAIN & OFF-SITE WATER
11	1/16/06	ADD AMENITY SHEETS 109B1 & 109B2
12	1/26/06	REV. SHEETS 67B, 68B, 73B, 74B & 109B2
13	3/23/06	REV. SHEETS 67B-78B, 109B1 & 109B2

NOTE:  
 67B-72B SITE PLAN SHEETS  
 73B-78B GRADING PLAN SHEETS  
 92B-97B DRAINAGE AREA SHEETS  
 98B-103B WATER LAYOUT SHEETS

**PICKETT RAY & SILVER**  
 CIVIL ENGINEERS  
 PLANNERS  
 LAND SURVEYORS  
 333 Mid Rivers Mall Drive  
 St. Peters, MO 63376  
 Phone (636) 397-1211  
 Fax (636) 397-1104

**BROOKSIDE**  
 VILLAGE B  
 COVER SHEET  
 Prepared For:  
 SUMMIT POINTE L.C.

NO.	DATE	REV. PER CITY COMMENTS
3	8/11/05	REV. PER CITY COMMENTS 7/26/05
4	8/25/05	REV. ENTRANCES PER COUNTY
5	8/26/05	REV. PER CITY & CLIENT
6	9/19/05	REV. PER CITY COMMENTS 9/12/05
8	10/28/05	SURPLUS A-JOINTS ELIMINATED
9	11/04/05	REV. WATER MAIN & OFF-SITE WATER
11	1/16/06	ADD AMENITY SHEETS 109B1 & 109B2
12	1/26/06	REV. SHEETS 67B, 68B, 73B, 74B & 109B2
13	3/23/06	REV. SHEETS 67B-78B, 98B, 109B1, & 109B2

**ENGINEERS AUTHENTICATION**  
 The responsibility for professional engineering liability on this project is hereby limited to the set of plans authenticated by the seal, signature, and date hereunder attached. Responsibility is disclaimed for all other engineering plans involved in this project and specifically excludes revisions after this date unless reauthenticated.  
**PICKETT, RAY & SILVER, INC.**  
 STATE OF MISSOURI  
 ELMER ANTHONY  
 REGISTERED PROFESSIONAL ENGINEER  
 NUMBER E-16146  
 4/13/06

DRAWN	E.J.S.	DATE	02/14/05
CHECKED	D.W.D.	DATE	02/14/05
PROJECT #	03029.SUPO.01R		
TASK #	2	FIELD BOOK	847

VILLAGE B  
 COVER SHEET  
 SHEET 66B OF 149  
 © Copyright 2005 by Pickett, Ray & Silver Inc.