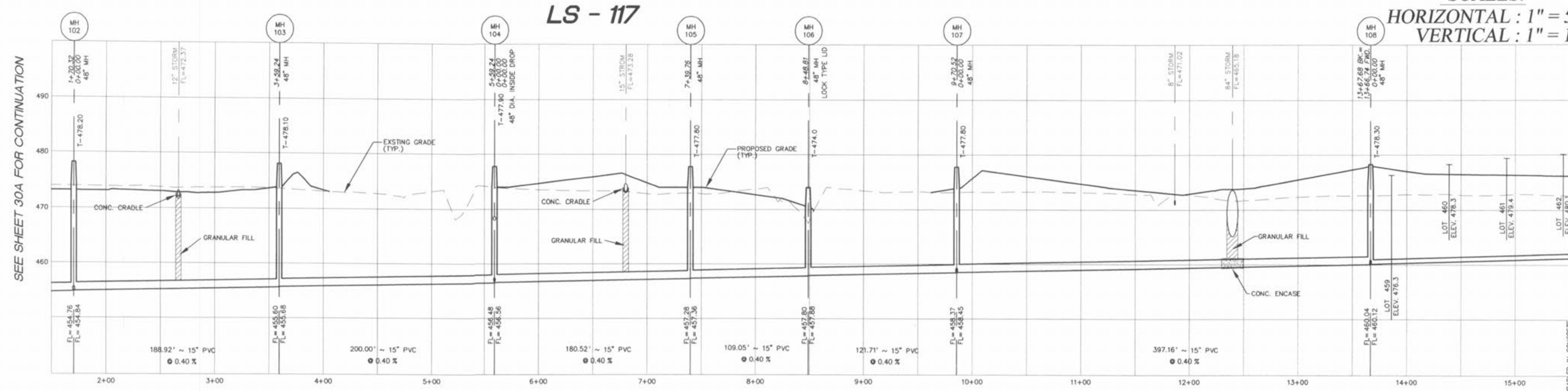
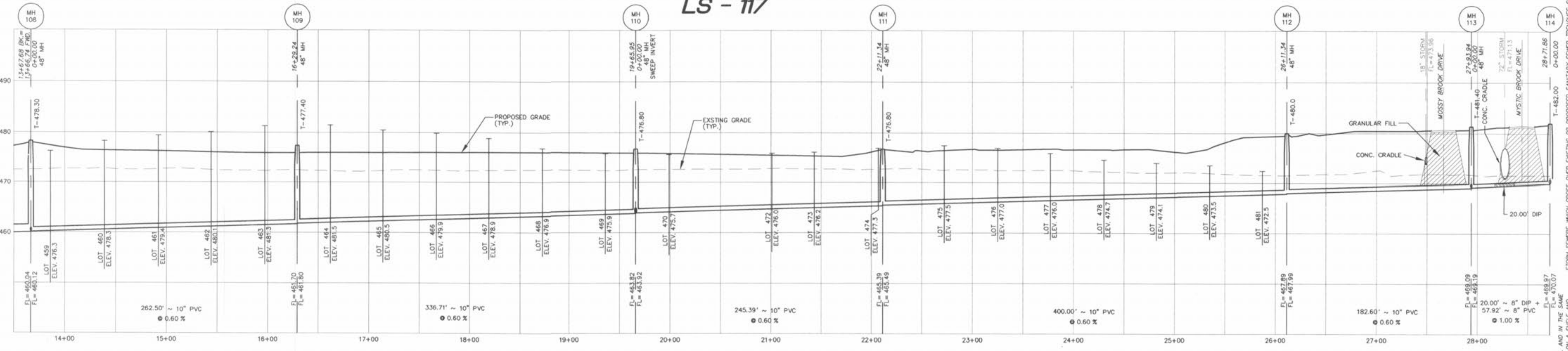


SCALES:  
HORIZONTAL : 1" = 50'  
VERTICAL : 1" = 10'



SEE SHEET 30A FOR CONTINUATION

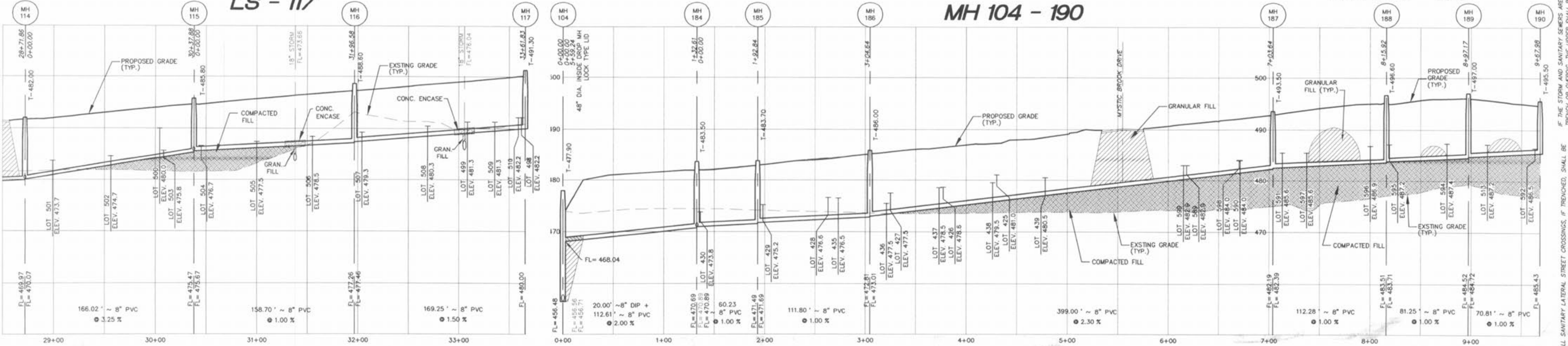
LS - 117



LS - 117

MH 104 - 190

MH 104 - 190



IF THE STORM AND SANITARY SEWERS ARE PARALLEL AND IN THE SAME TRENCH OR OVERHEAD, THE UPPER SHALL BE PLACED ON A SHELVE AND BACKFILLED WITH GRANULAR MATERIAL (AGGREGATE).  
IF THE STORM AND SANITARY SEWERS CROSS OVER EXISTING OR PROPOSED SANITARY SEWER TRUNKS, THE TRUNKS SHALL BE GRADED IN-CONCRETE GRANULAR FILL TO THE BOTTOM OF THE CONCRETE CRADLE.

**PICKETT RAY & SILVER**  
CIVIL ENGINEERS  
PLANNERS  
LAND SURVEYORS  
333 Mid Rivers Mall Drive  
St. Peters, MO 65376  
Phone (636) 397-1211  
Fax (636) 397-1104

**BROOKSIDE VILLAGE B**  
SANITARY PROFILES  
Prepared For:  
**SUMMIT POINTE L.C.**  
239 FOX HILL ROAD  
ST. CHARLES, MO. 63101  
(636) 445-9580

NO.	DATE	REV.	PER CITY COMMENTS
1	8/11/05	REV.	PER CITY COMMENTS DATED 7/29/05
2	9/19/05	REV.	PER CITY COMMENTS 9/15/05
3			
4			
5			

**ENGINEERS AUTHENTICATION**  
The responsibility for professional engineering liability on this project is hereby limited to the set of plans authorized by the seal, signature, and date hereunder attached. Responsibility is disclaimed for all other engineering plans involved in this project and specifically excludes revisions after this date unless reauthentications are provided.

**PICKETT RAY & SILVER, INC.**  
Professional Engineer  
No. 23345  
E-23345

DRAWN	MAK	DATE	FEB, 2005
CHECKED	DWD	DATE	FEB, 2005
PROJECT #	03029 SUPD.01R		
TASK #	002 FIELD BOOK 847		