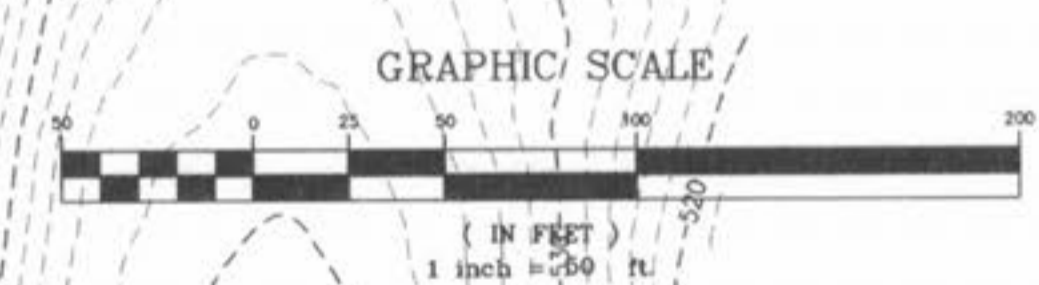
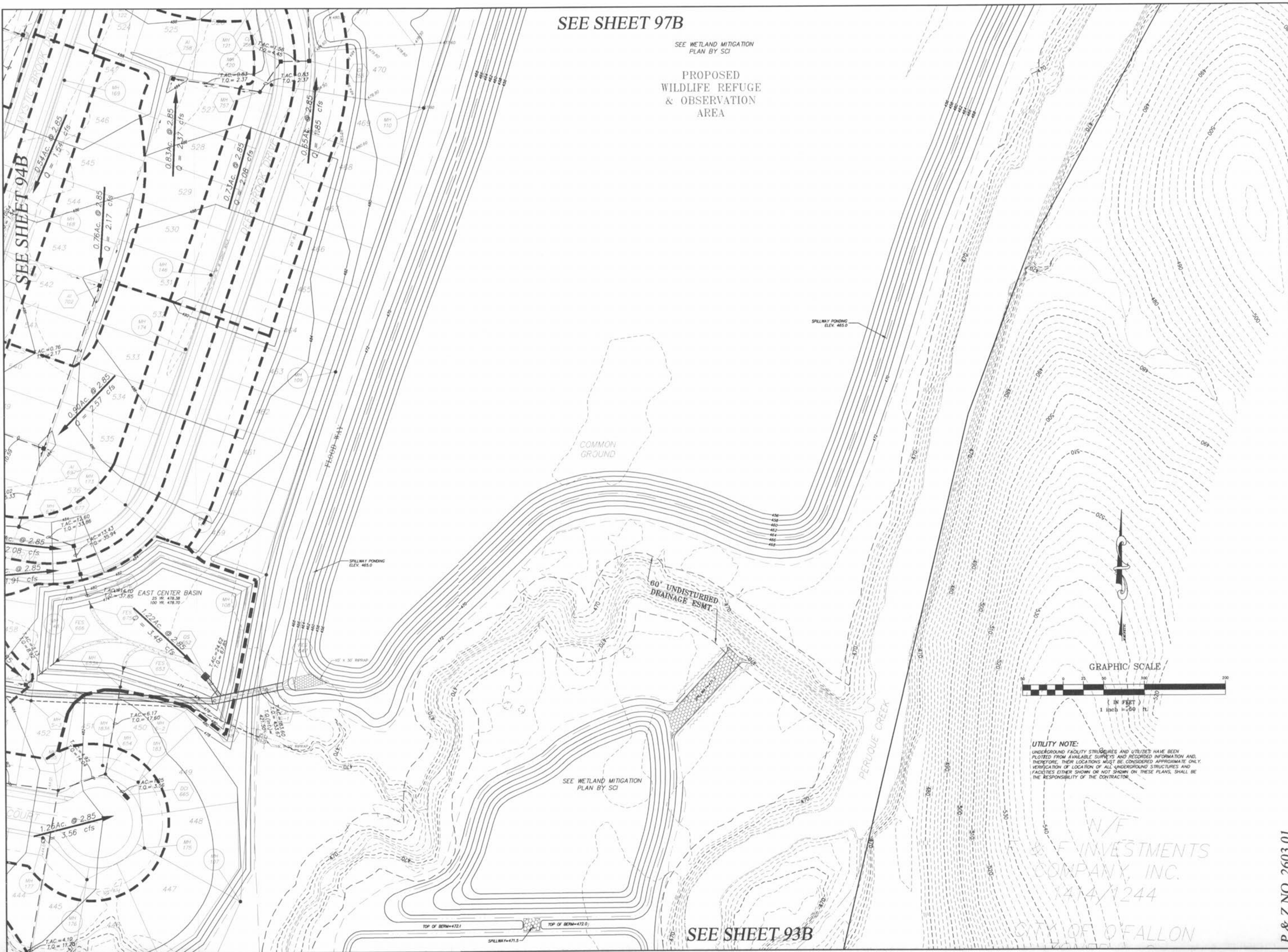


SEE SHEET 97B

SEE WETLAND MITIGATION  
PLAN BY SCI

PROPOSED  
WILDLIFE REFUGE  
& OBSERVATION  
AREA



UTILITY NOTE:  
UNDERGROUND FACILITY STRUCTURES AND UTILITIES HAVE BEEN  
PLOTTED FROM AVAILABLE SURVEYS AND RECORDED INFORMATION AND,  
THEREFORE, THEIR LOCATIONS MUST BE CONSIDERED APPROXIMATE ONLY.  
VERIFICATION OF LOCATION OF ALL UNDERGROUND STRUCTURES AND  
FACILITIES EITHER SHOWN OR NOT SHOWN ON THESE PLANS, SHALL BE  
THE RESPONSIBILITY OF THE CONTRACTOR.



SEE SHEET 93B

**PICKETT RAY & SILVER**  
 CIVIL ENGINEERS  
 PLANNERS  
 LAND SURVEYORS

333 Mid Rivers Mall Drive  
 St. Peters, MO 63376  
 Phone (636) 397-1211  
 Fax (636) 397-1104

**BROOKSIDE  
 VILLAGE B  
 DRAINAGE AREA MAP**

Prepared For:  
**SUMMIT POINTE L.C.**

239 FOX HILL ROAD  
 ST. CHARLES, MO 63301  
 (636) 946-9300

REVISIONS	NO.	DATE	REV. PER CITY COMMENTS
	3	6/11/05	REV. PER CITY COMMENTS 7/26/05

**ENGINEERS AUTHENTICATION**  
 The responsibility for professional engineering liability on this project is hereby limited to the set of plans authenticated by the seal, signature, and date hereunder attached. Responsibility is disclaimed for all other engineering plans involved in this project and specifically excludes revisions after this date unless reauthenticated.

**PICKETT RAY & SILVER, INC.**  
 STATE OF MISSOURI  
 REGISTERED PROFESSIONAL ENGINEER  
**HAROLD J. BARTCH**  
 NUMBER  
 E-17751

DRAWN	E.J.S.	DATE	02/14/05
CHECKED	D.W.D.	DATE	02/14/05
PROJECT #	03029.SUPO.01R		
TASK #	002	FIELD BOOK	847

VILLAGE B  
 DRAINAGE AREA MAP  
**SHEET 95B OF 149**  
 © Copyright 2005 by Pickett, Ray & Silver, Inc.

P & Z NO. 2603.01

\\server\projects\03029\dwg\03029005.DWG, 8/17/2005 9:50:54 AM, NICK