

SEE SHEET 113C

COMMON GROUND

SEE SHEET 112C

**PICKETT RAY & SILVER**

CIVIL ENGINEERS  
PLANNERS  
LAND SURVEYORS

333 Mid Rivers Mall Drive  
St. Peters, MO 65576  
Phone (636) 397-1211  
Fax (636) 397-1104

**BROOKSIDE VILLAGE C**  
SITE PLAN

Prepared For:  
**SUMMIT POINTE L.C.**

339 FOX HILL ROAD  
ST. CHARLES, MO. 63101  
(636) 940-9380

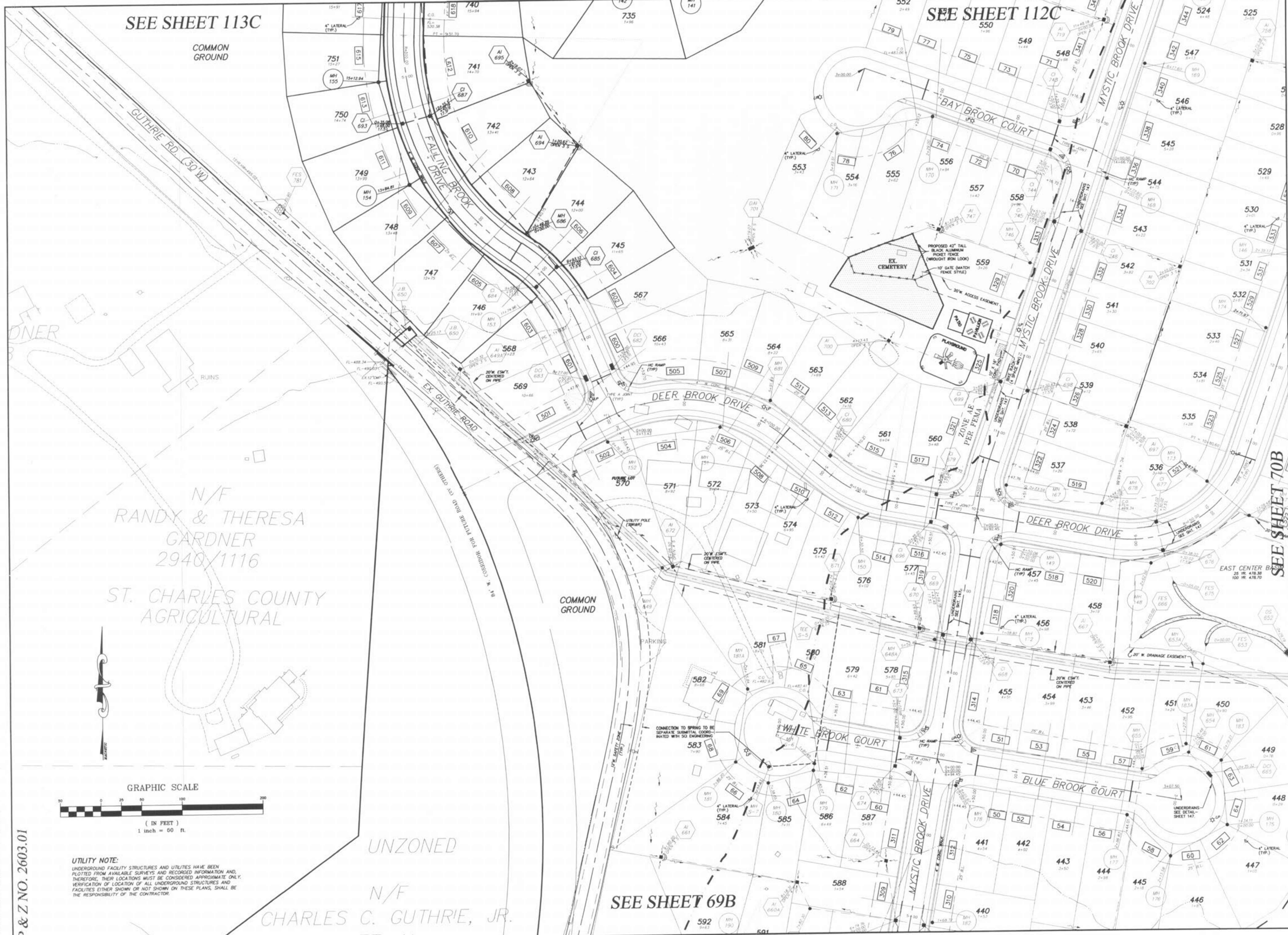
NO.	DATE	REV.	PER CITY COMMENTS
1	8/11/05	1	REV. PER CITY COMMENTS 7/28/05
2	8/11/05	2	REV. PER CITY COMMENTS PER COUNTY
3	9/16/05	3	REV. PER CITY COMMENTS DATED 9/12/05
4	10/28/05	4	REV. PER CITY COMMENTS DATED 9/12/05
5	3/23/06	5	CORRECT LIGHT STD. LOCATIONS PER FRANK G.

DRAWN	E.J.S.	DATE	02/14/05
CHECKED	D.W.D.	DATE	02/14/05
PROJECT #	03029.SUPO.01R		
TASK #	002	FIELD BOOK	847

VILLAGE C  
SITE PLAN

SHEET 111C OF 149

© Copyright 2005 by Pickett, Ray & Silver Inc.



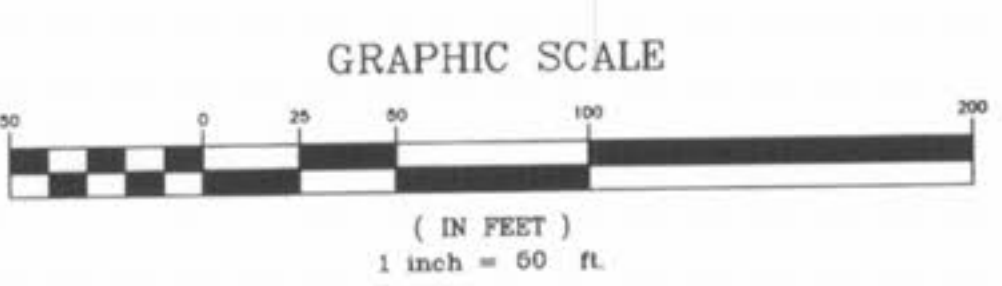
SEE SHEET 70B

SEE SHEET 69B

UNZONED

N/F  
CHARLES C. GUTHRIE, JR.

N/F  
RANDY & THERESA  
GARDNER  
2940/1116  
ST. CHARLES COUNTY  
AGRICULTURAL



UTILITY NOTE:  
UNDERGROUND FACILITY STRUCTURES AND UTILITIES HAVE BEEN PLOTTED FROM AVAILABLE SURVEYS AND RECORDED INFORMATION AND, THEREFORE, THEIR LOCATIONS MUST BE CONSIDERED APPROXIMATE ONLY. VERIFICATION OF LOCATION OF ALL UNDERGROUND STRUCTURES AND FACILITIES EITHER SHOWN OR NOT SHOWN ON THESE PLANS, SHALL BE THE RESPONSIBILITY OF THE CONTRACTOR.

P & Z NO. 2603.01

I:\server\projects\03029\dwg\03029SUPO.DWG, 3/24/2006 12:05:39 PM, DON DANSON