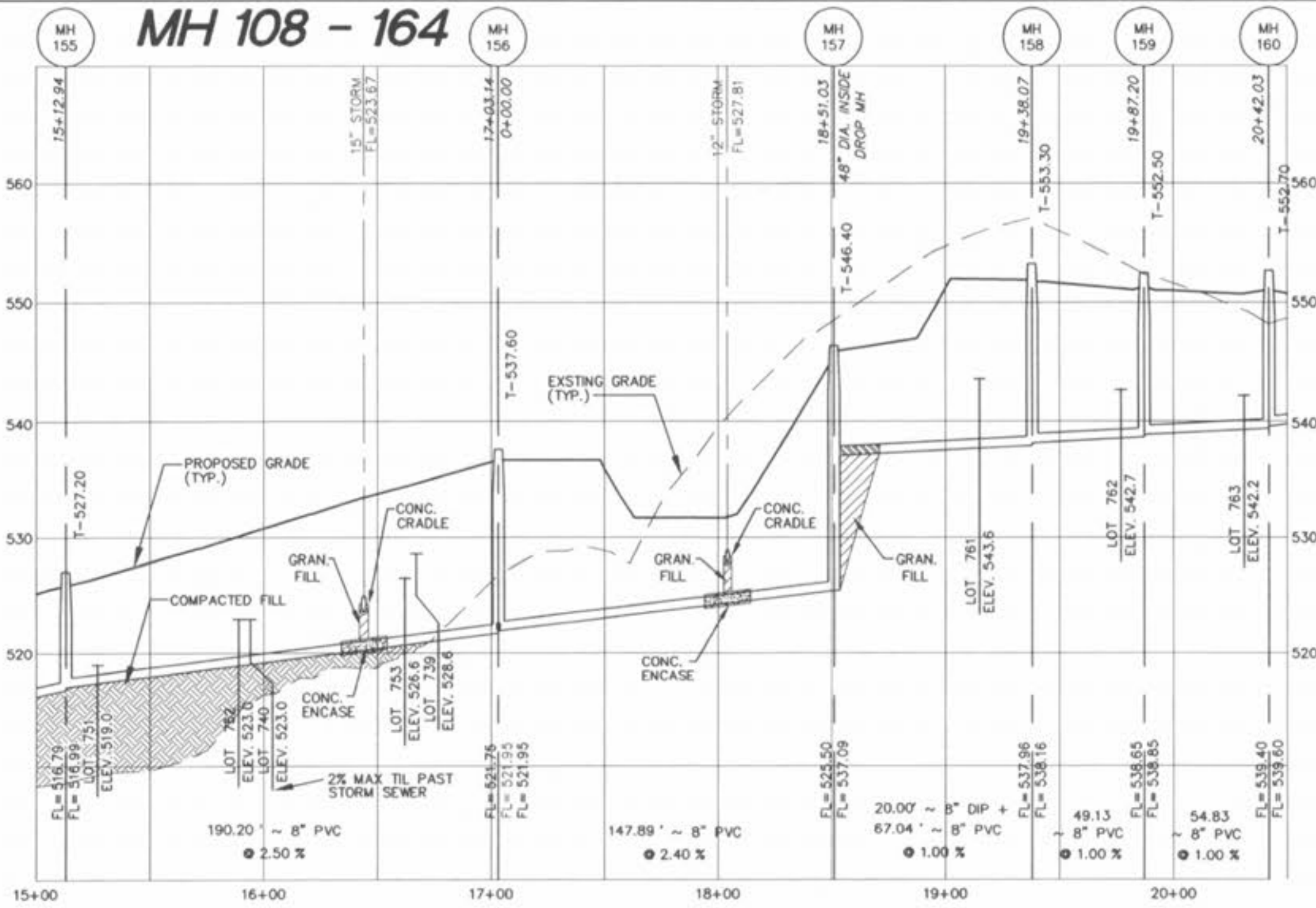


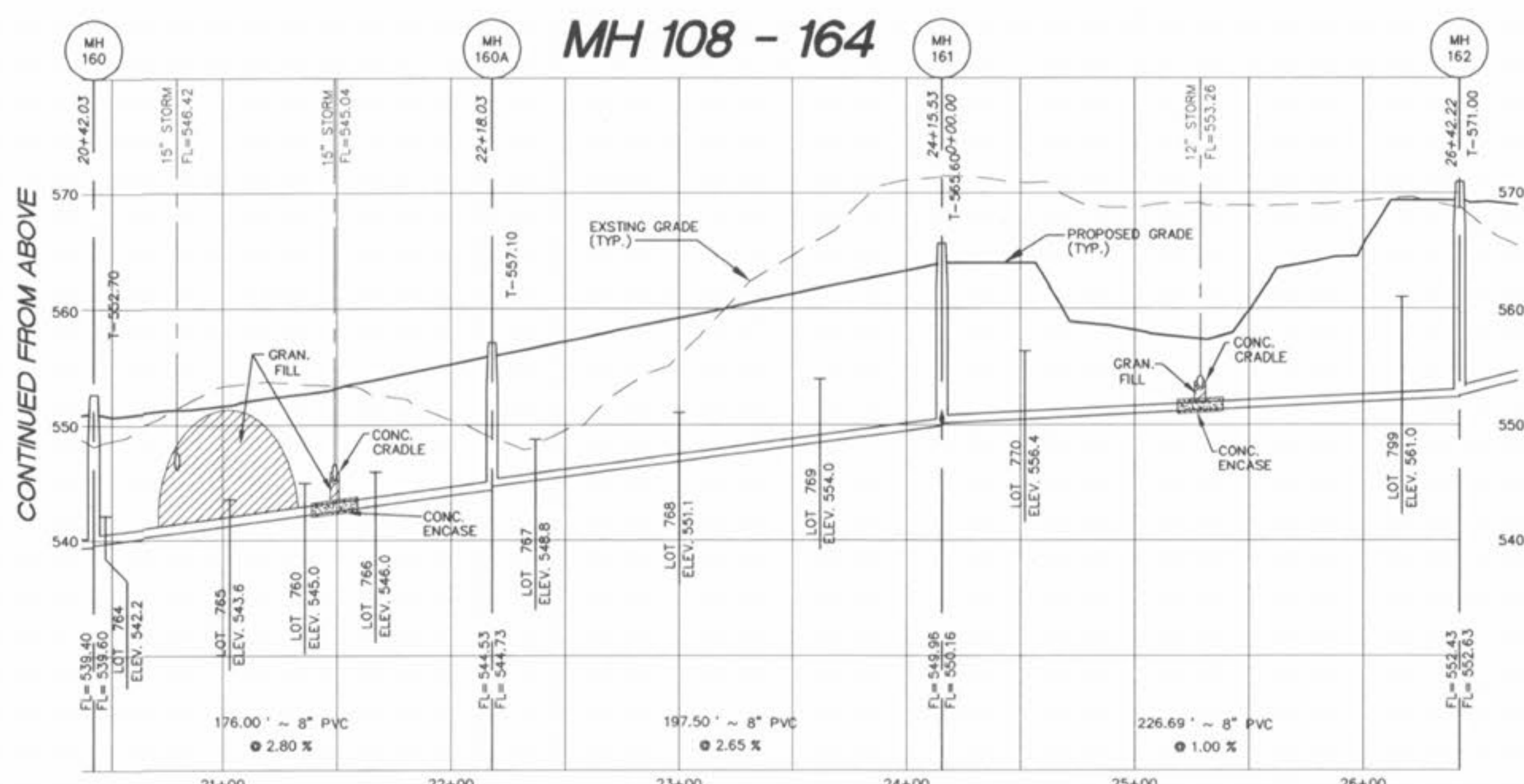
SEE SHEET 86B FOR CONTINUATION



MH 108 - 164

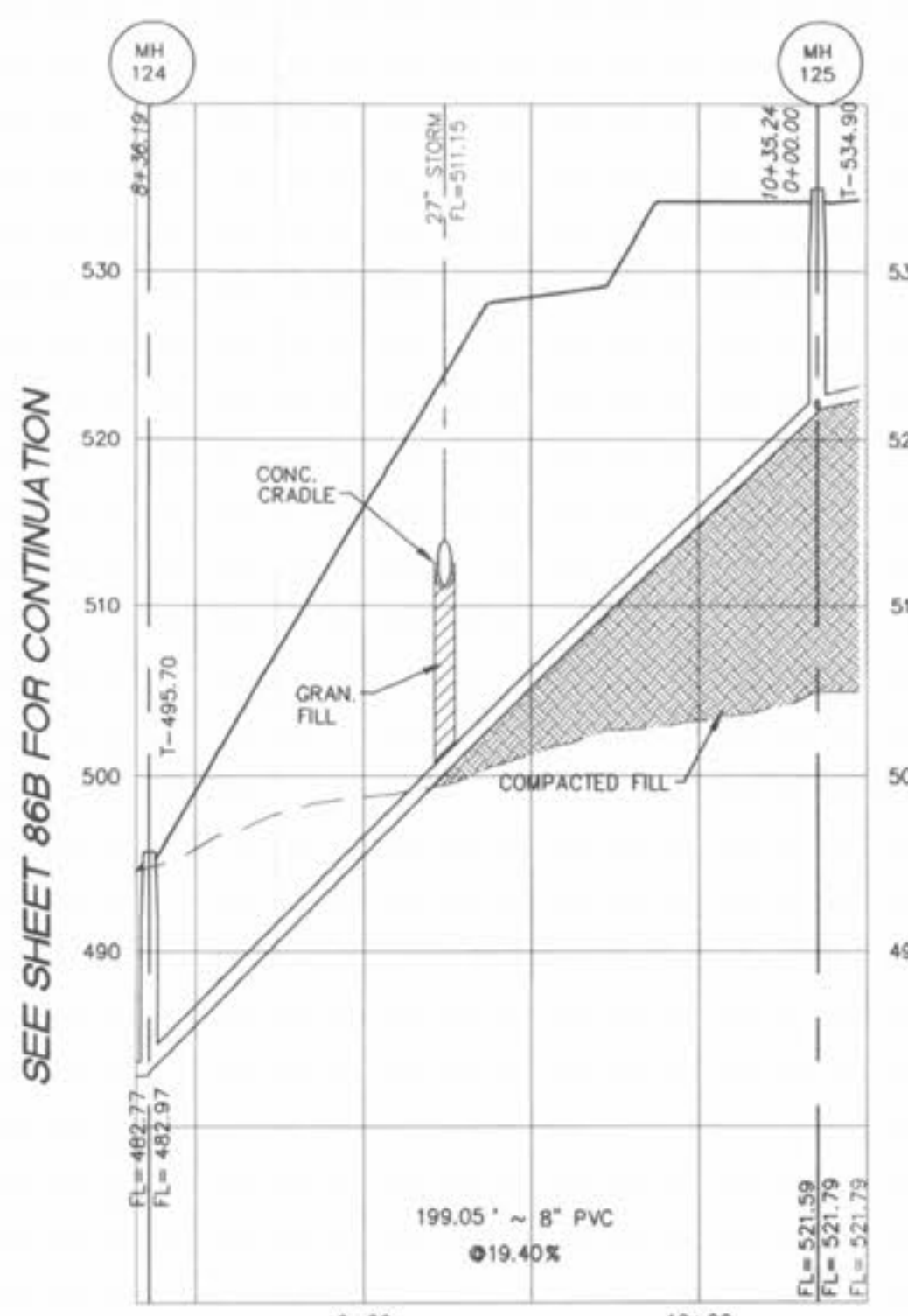
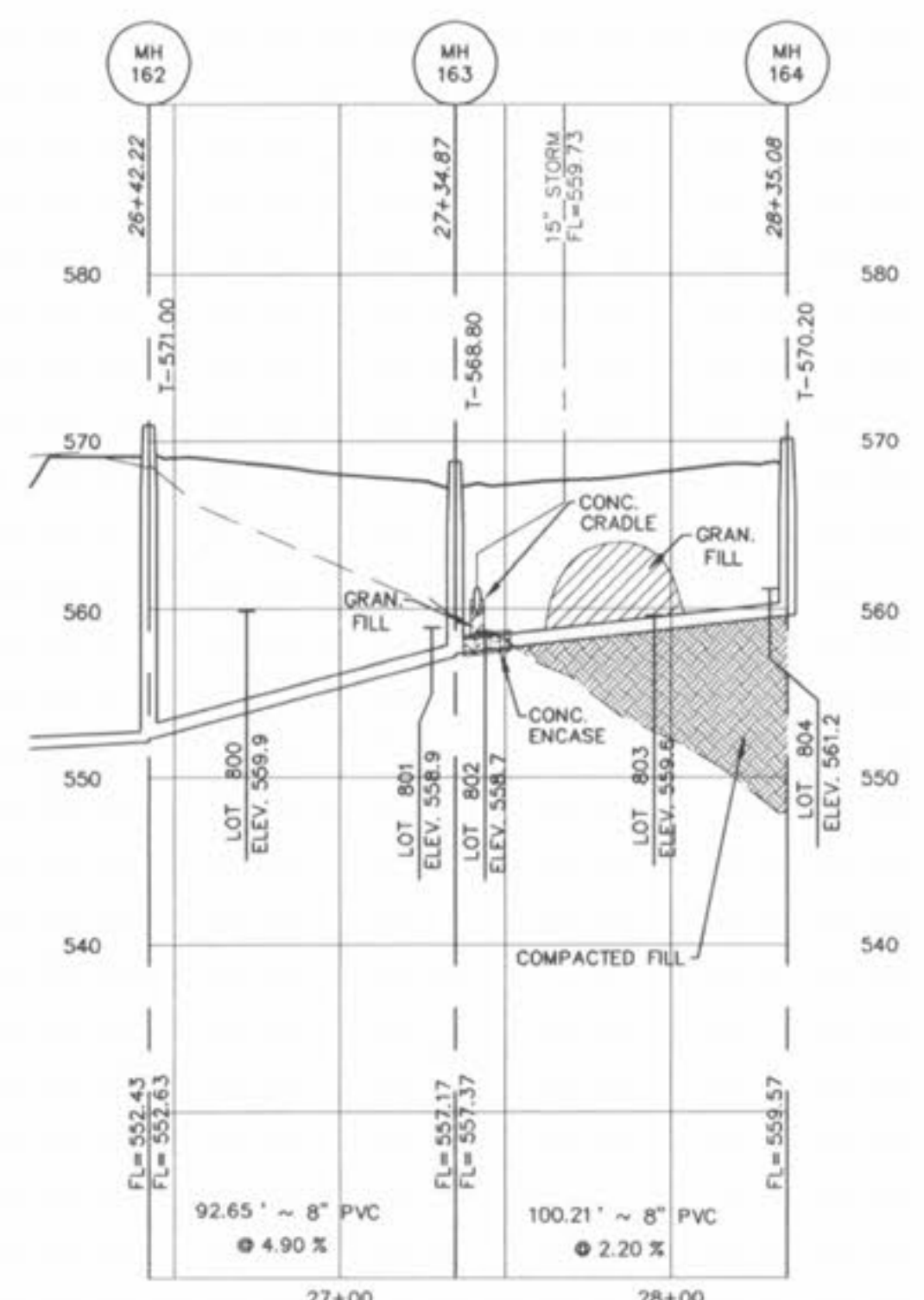
CONTINUED BELOW

ALL SANITARY LATERAL STREET CROSSINGS, IF TRENCHED, SHALL BE BACKFILLED WITH GRANULAR MATERIAL (AGGREGATE).
 IF THE STORM AND SANITARY SEWERS ARE PARALLEL AND IN THE SAME TRENCH OR OVERDIP, THE UPPER SHALL BE PLACED ON A SHELF AND THE LOWER SHALL BE BEDDED IN COMPACTED GRANULAR FILL TO THE FLOW LINE OF THE UPPER.
 STORM SEWERS WHICH CROSS OVER EXISTING OR PROPOSED SANITARY SEWER TRENCHES SHALL BE CRADLED IN CONCRETE (OR ENCASED H.D.P.E.) THROUGH THE FULL WIDTH OF THE SANITARY SEWER TRENCH. THE TRENCH SHALL BE BACKFILLED AND COMPACTED GRANULAR FILL TO THE BOTTOM OF THE CONCRETE CRADLE.

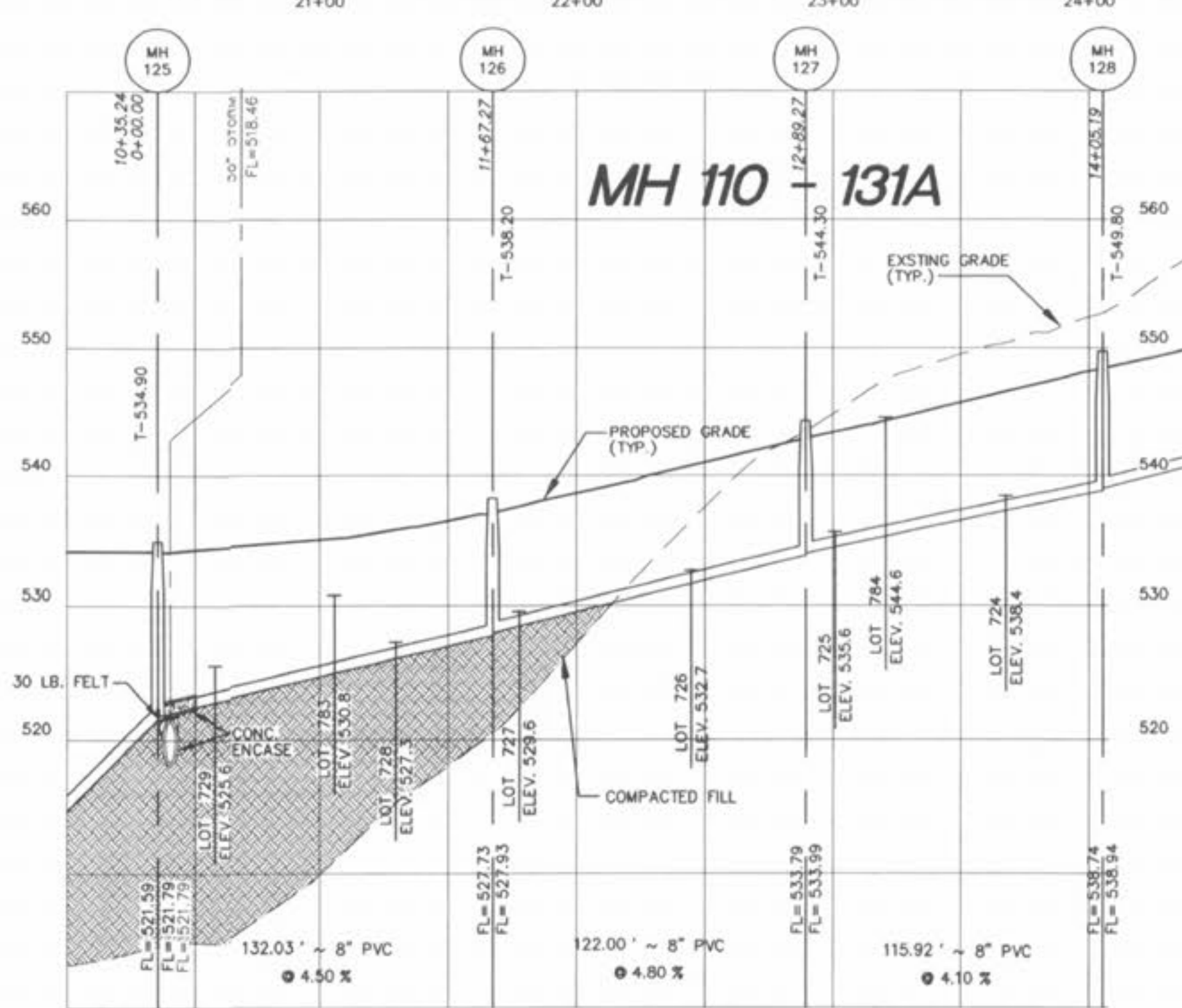


MH 108 - 164

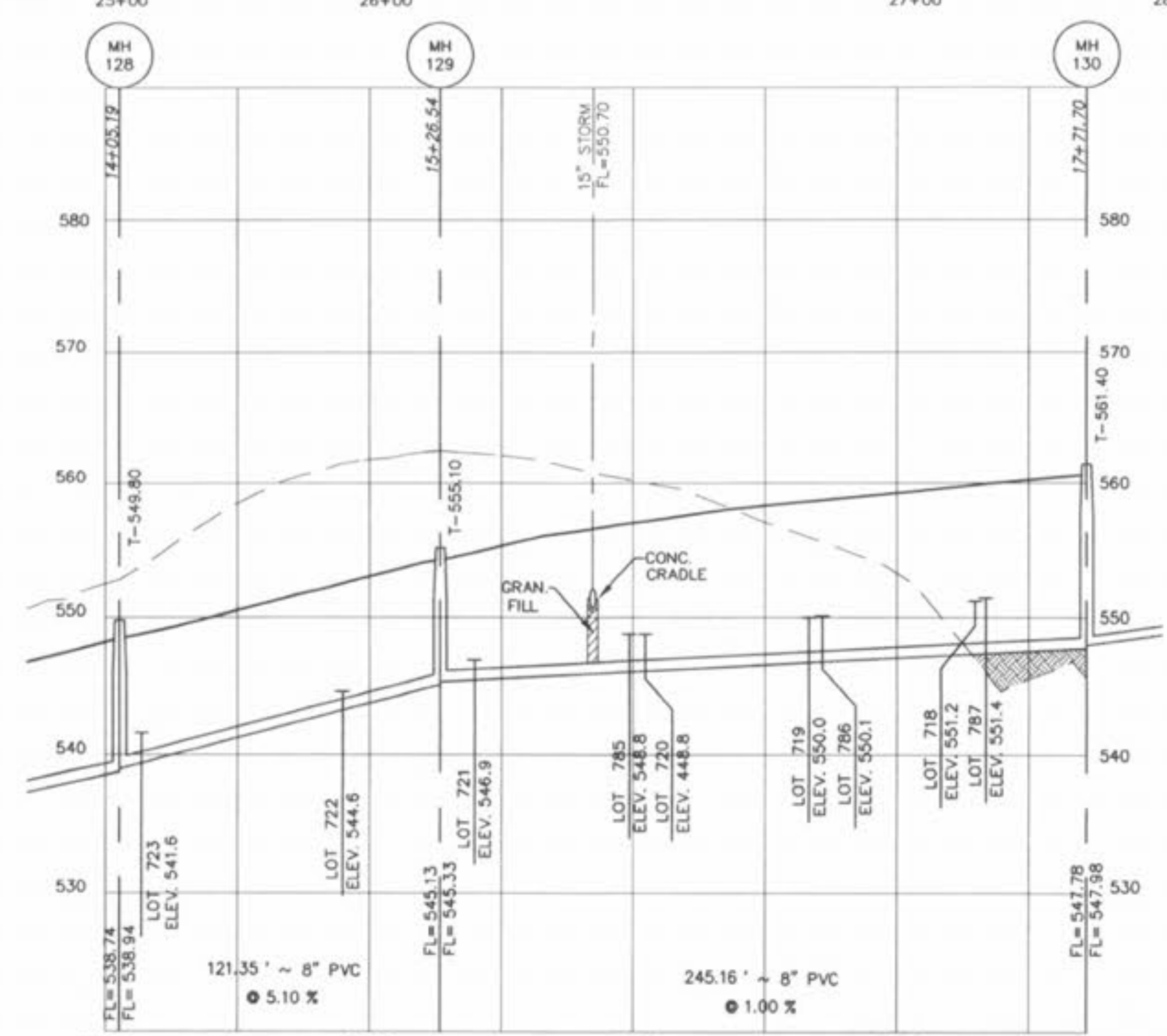
CONTINUED FROM ABOVE



SEE SHEET 86B FOR CONTINUATION



MH 110 131A



SEE SHEET 121C FOR CONTINUATION

SCALES:
 HORIZONTAL : 1" = 50'
 VERTICAL : 1" = 10'
 P & Z NO. 2603.01

PICKETT RAY & SILVER
 CIVIL ENGINEERS
 PLANNERS
 LAND SURVEYORS

333 Mid Rivers Mall Drive
 St. Peters, MO 63376
 Phone (636) 397-1211
 Fax (636) 397-1104

BROOKSIDE VILLAGE C
 SANITARY PROFILES

Prepared For:
SUMMIT POINTE L.C.

239 FOX HILL ROAD
 FORT CHARLES, MO. 63001
 (636) 340-3350

NO.	DATE	REV.	BY	CHKD.	COMMENTS
3	8/11/05				REVISED PER CITY COMMENTS DATED 7/26/05

ENGINEERS AUTHENTICATION
 The responsibility for professional engineering liability on this project is hereby limited to the set of plans authenticated by the seal, signature, and date hereunder attached. Responsibility is disclaimed for all other engineering plans involved in this project and specifically excludes revisions other than those specifically noted on this drawing.

HAROLD J. BARTCH
 REGISTERED PROFESSIONAL ENGINEER
 E-19751

DRAWN	MAK	DATE	FEB, 2005
CHECKED	DWD	DATE	FEB, 2005
PROJECT #	03029.SUPO.01R	TASK #	002 FIELD BOOK
SHEET	120C	OF	149