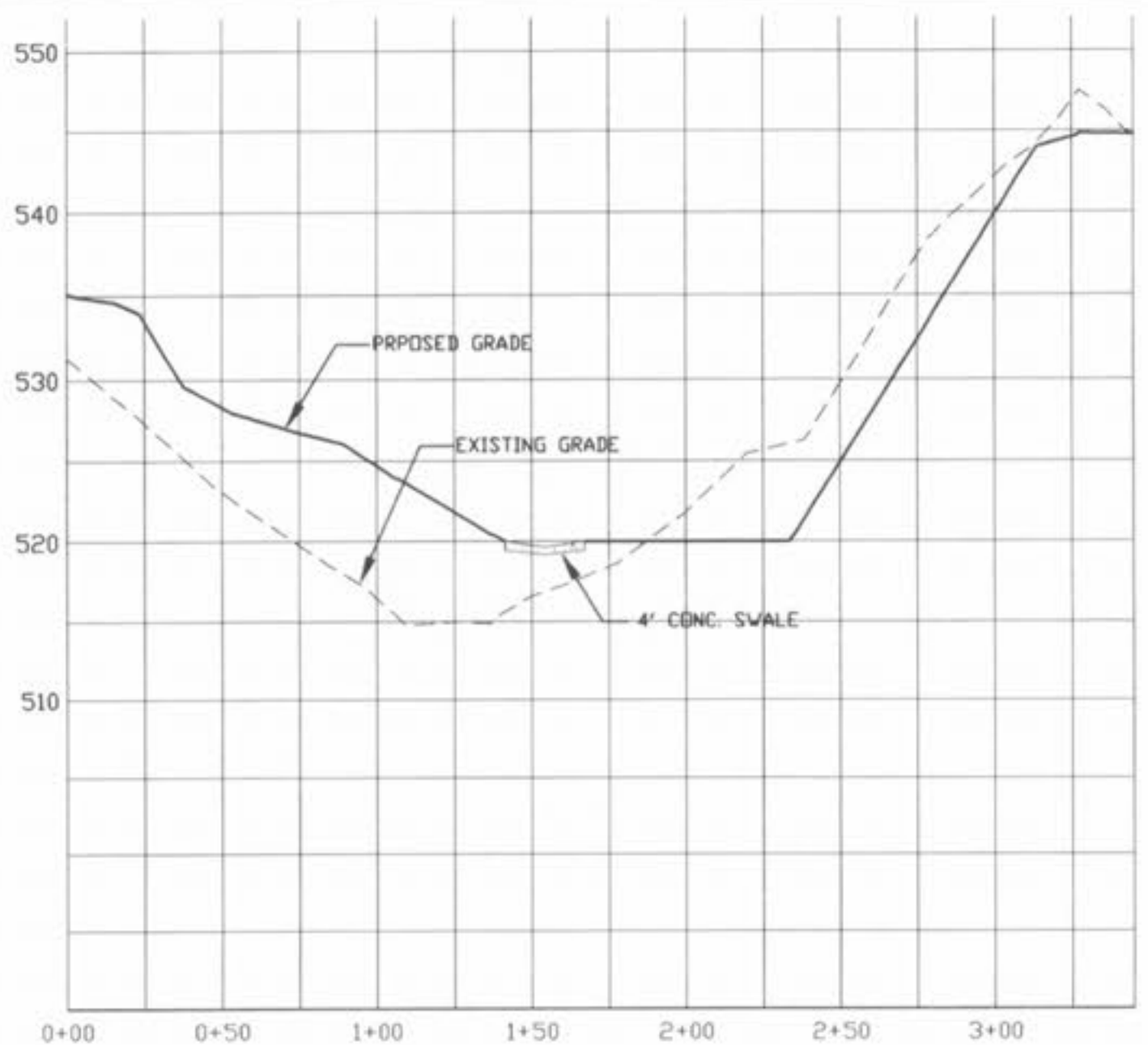
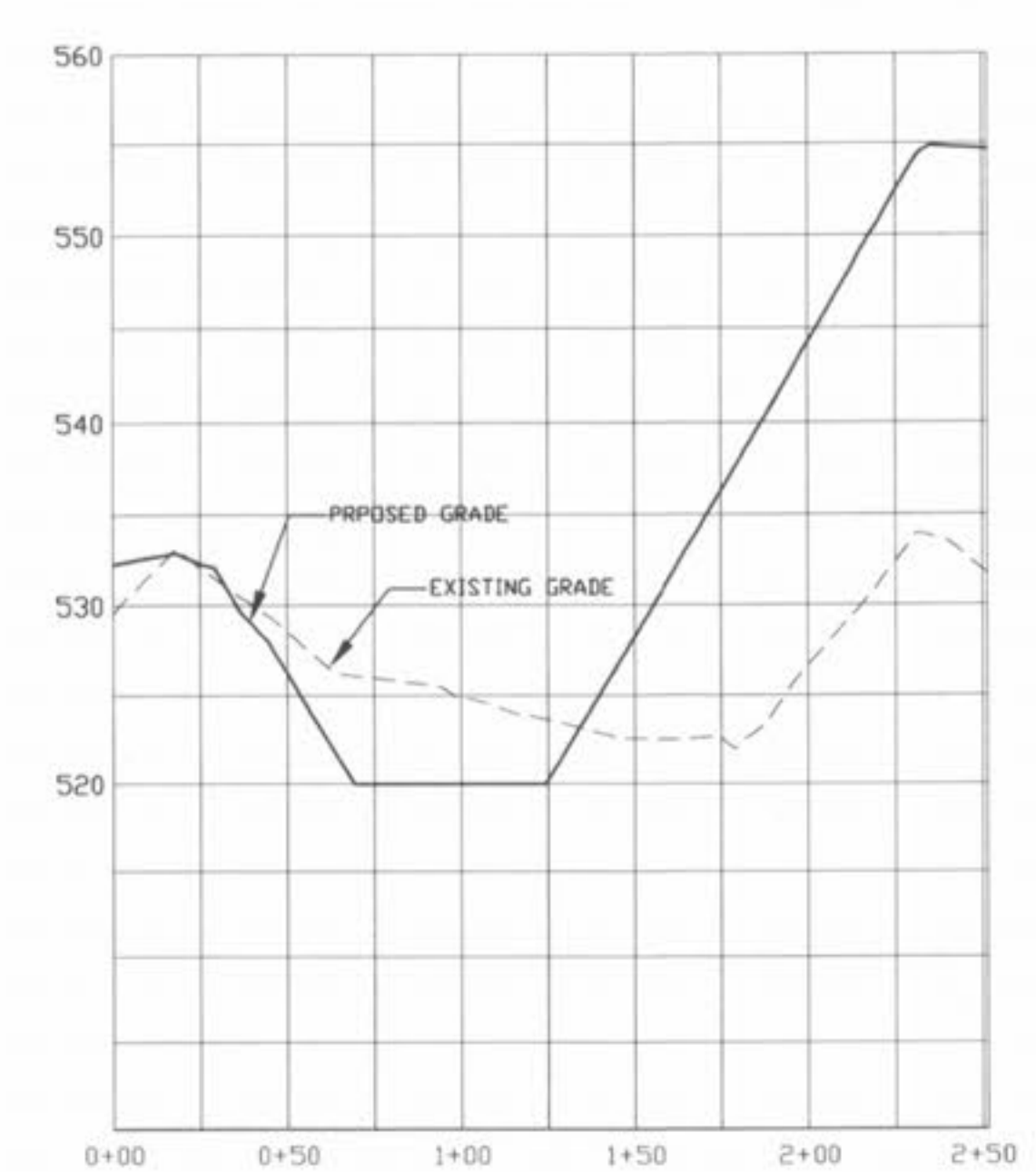


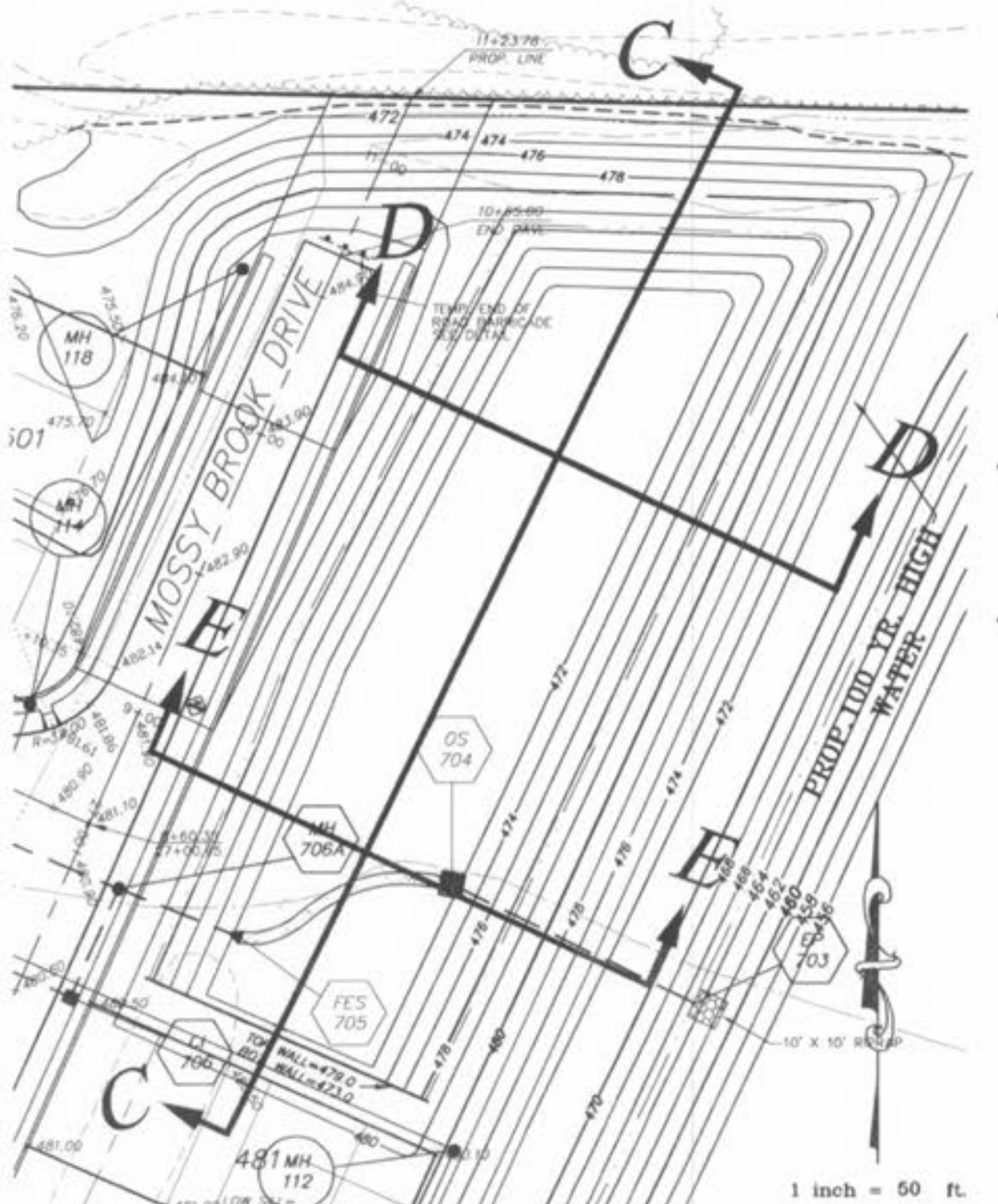
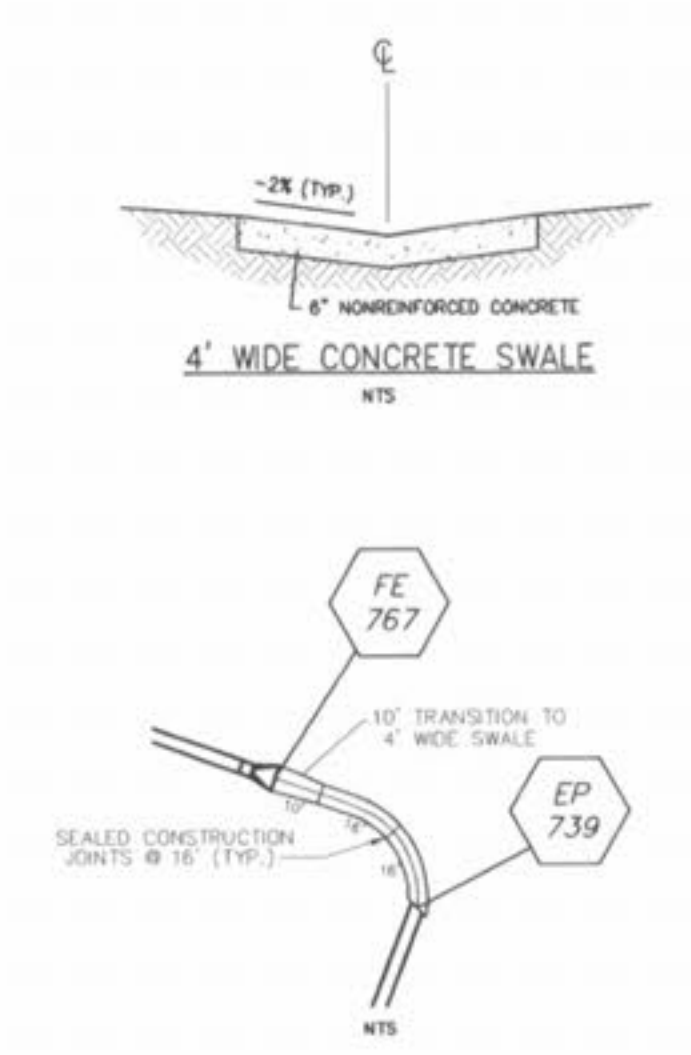
NORTH MIDDLE BASIN



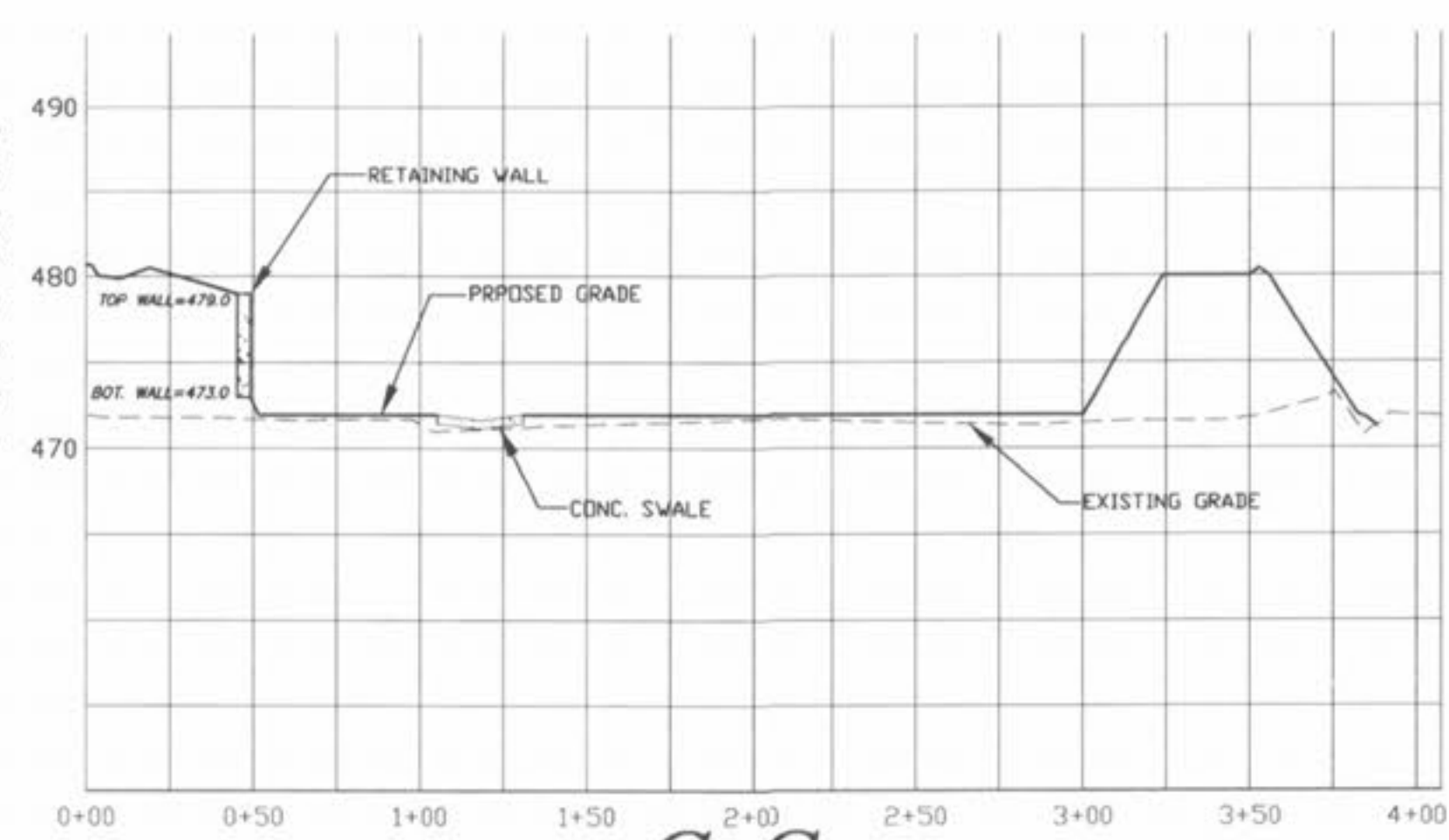
A-A
 PROFILE SCALES:
 HORIZONTAL: 1" = 50'
 VERTICAL: 1" = 10'



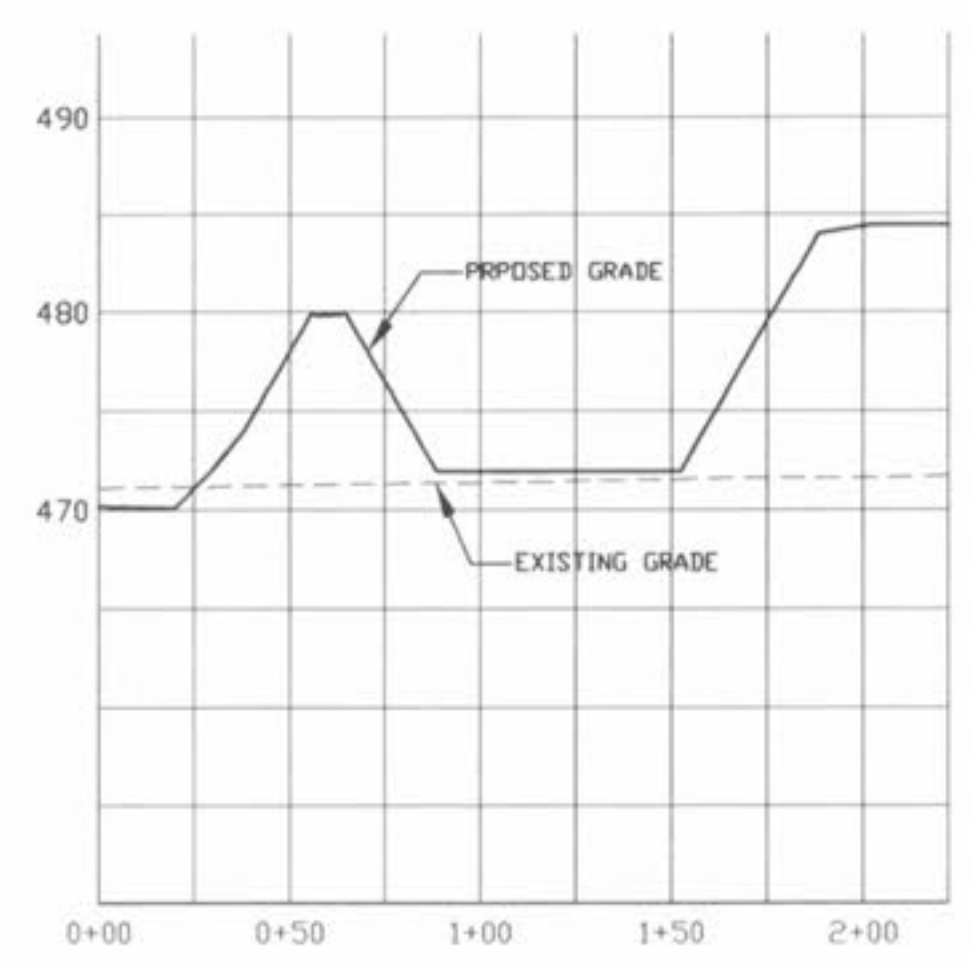
B-B
 PROFILE SCALES:
 HORIZONTAL: 1" = 50'
 VERTICAL: 1" = 10'



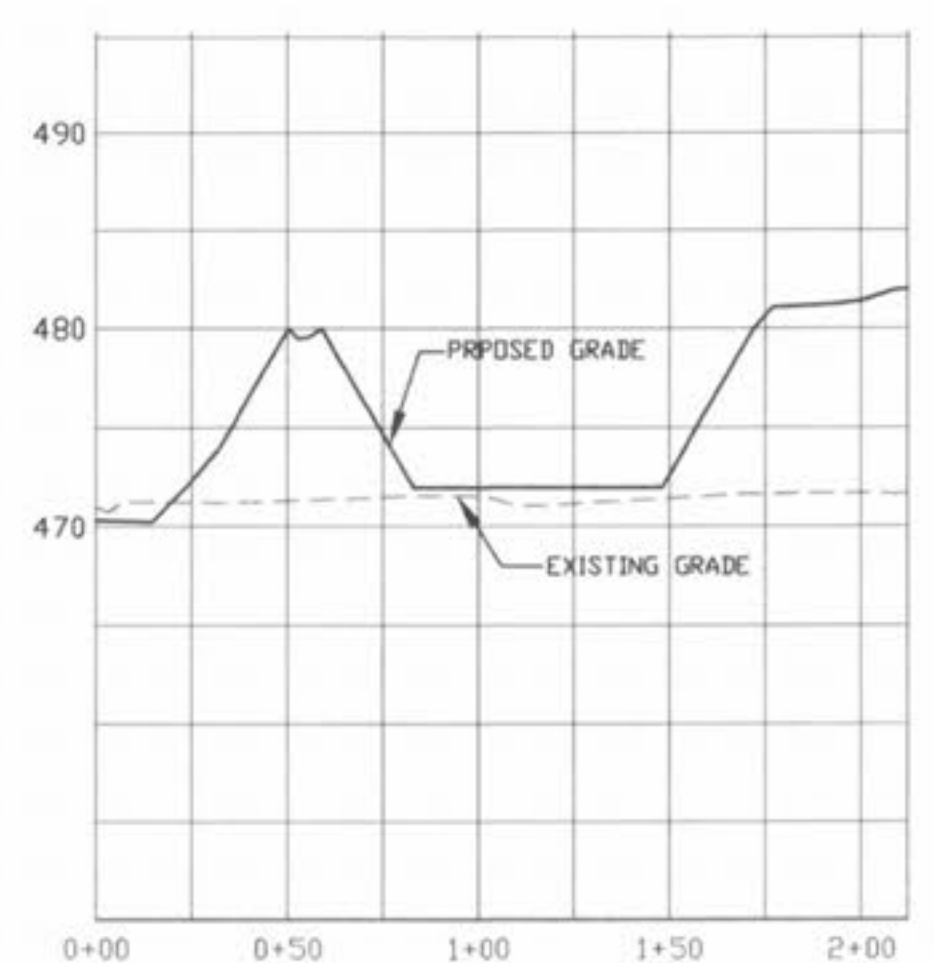
NORTHEAST BASIN



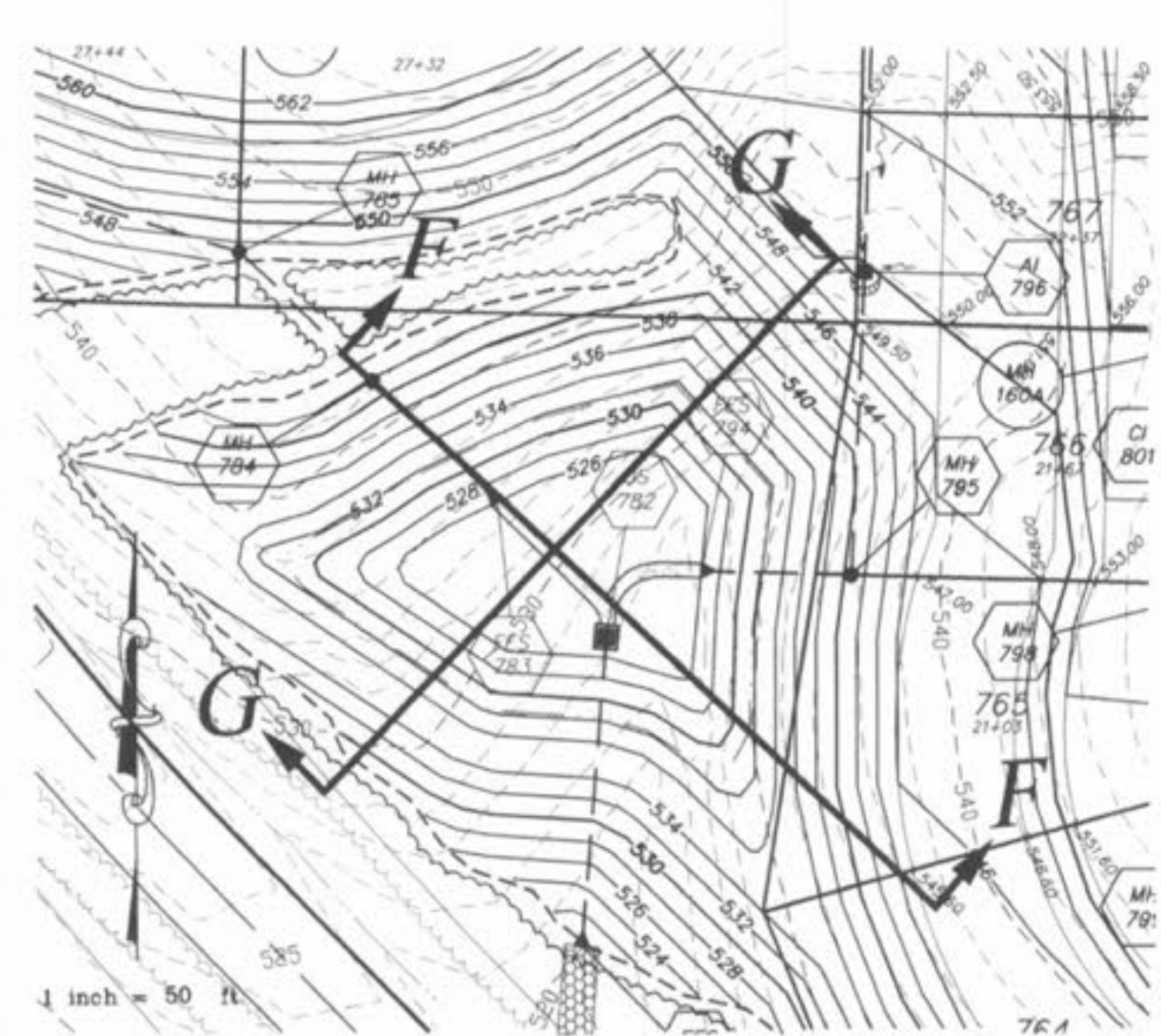
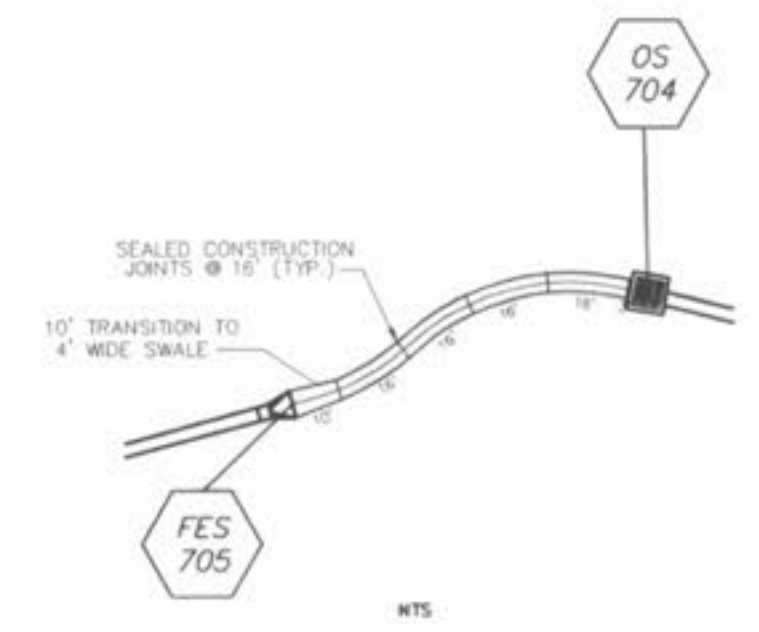
C-C
 PROFILE SCALES:
 HORIZONTAL: 1" = 50'
 VERTICAL: 1" = 10'



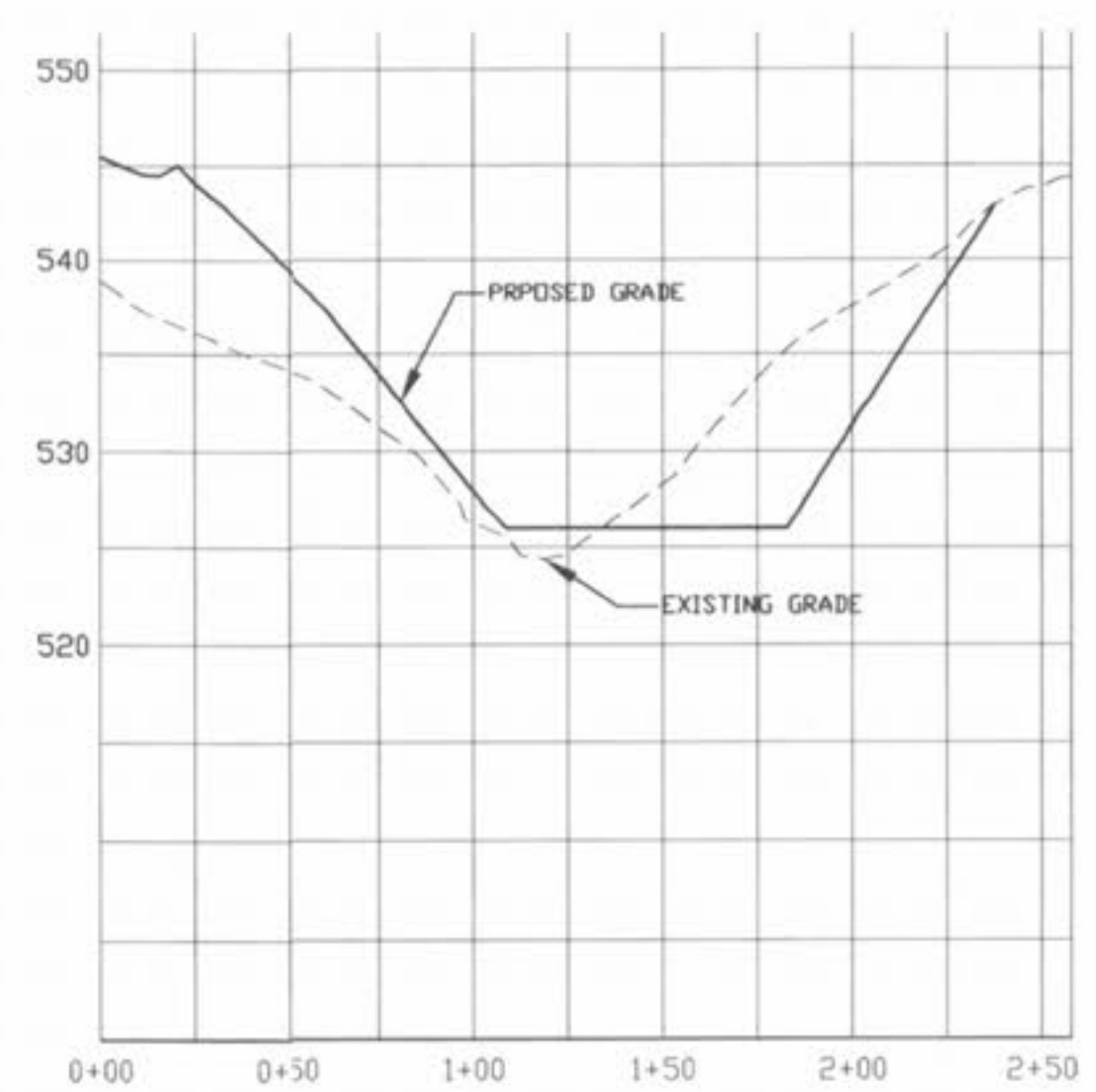
D-D
 PROFILE SCALES:
 HORIZONTAL: 1" = 50'
 VERTICAL: 1" = 10'



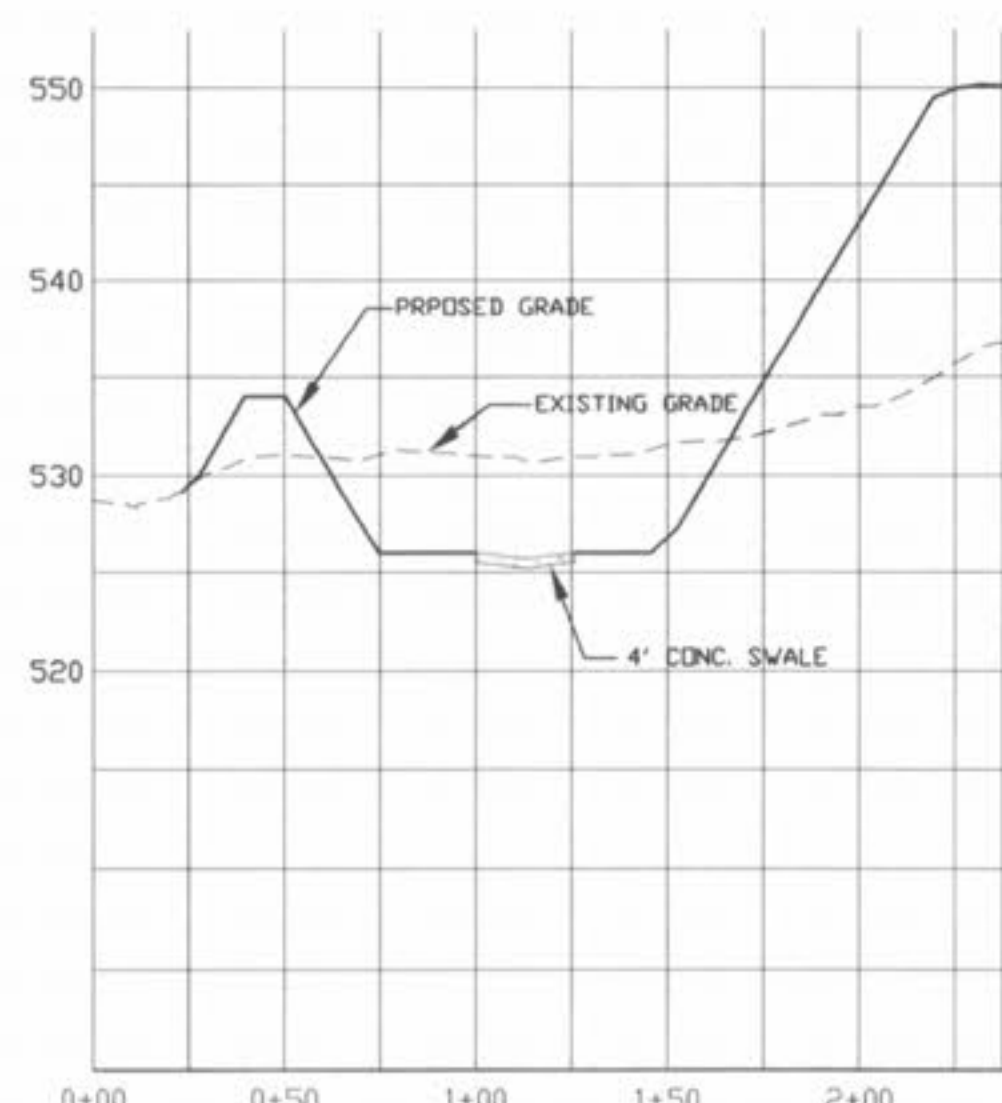
E-E
 PROFILE SCALES:
 HORIZONTAL: 1" = 50'
 VERTICAL: 1" = 10'



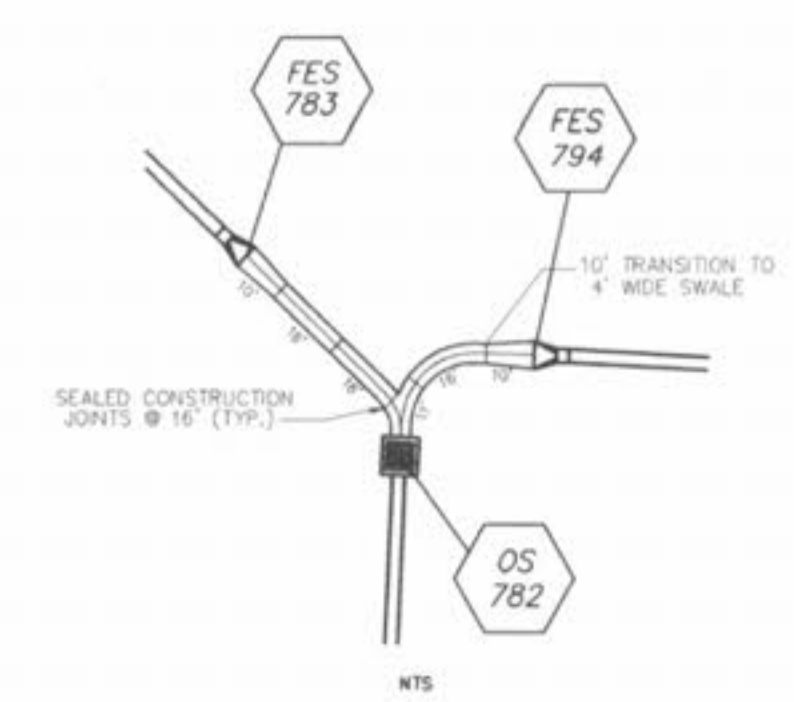
NORTHWEST BASIN



F-F
 PROFILE SCALES:
 HORIZONTAL: 1" = 50'
 VERTICAL: 1" = 10'



G-G
 PROFILE SCALES:
 HORIZONTAL: 1" = 50'
 VERTICAL: 1" = 10'



PICKETT RAY & SILVER
 CIVIL ENGINEERS
 PLANNERS
 LAND SURVEYORS
 333 Mid Rivers Mall Drive
 St. Peters, MO 63376
 Phone (636) 397-1211
 Fax (636) 397-1104

BROOKSIDE
 DETENTION BASIN DETAILS
 Prepared For:
SUMMIT POINTE L.C.
 239 FOX HILL ROAD
 ST. CHARLES, MO. 63301
 (636) 940-9370

REVISIONS	DATE	NO.	REV.	PER	CITY COMMENTS
3	08/11/05				07/28/05

ENGINEERS AUTHENTICATION
 The responsibility for professional engineering liability on this project is hereby limited to the set of plans authenticated by the seal, signature, and date hereunder attached. Responsibility is disclaimed for all other engineering plans involved in this project and specifically excludes revisions after the date unless reauthenticated.

PICKETT RAY & SILVER, INC.
 STATE OF MISSOURI
 REGISTERED PROFESSIONAL ENGINEER
 HAROLD J. BARTCH
 NUMBER
 E-17751

DRAWN	MAK	DATE	FEB., 2005
CHECKED	DWD	DATE	FEB., 2005
PROJECT #	03029.SUPD.01R		
TASK #	002	FIELD BOOK	847

BROOKSIDE
 DETENTION BASIN DETAILS
 SHEET 136 OF 149
 Copyright 2005 by Pickett, Ray & Silver, Inc.

S:\projects\03029\dwg\03029B8A\SIN_DES.dwg, 8/11/2005 1:26:12 PM, MKR, K