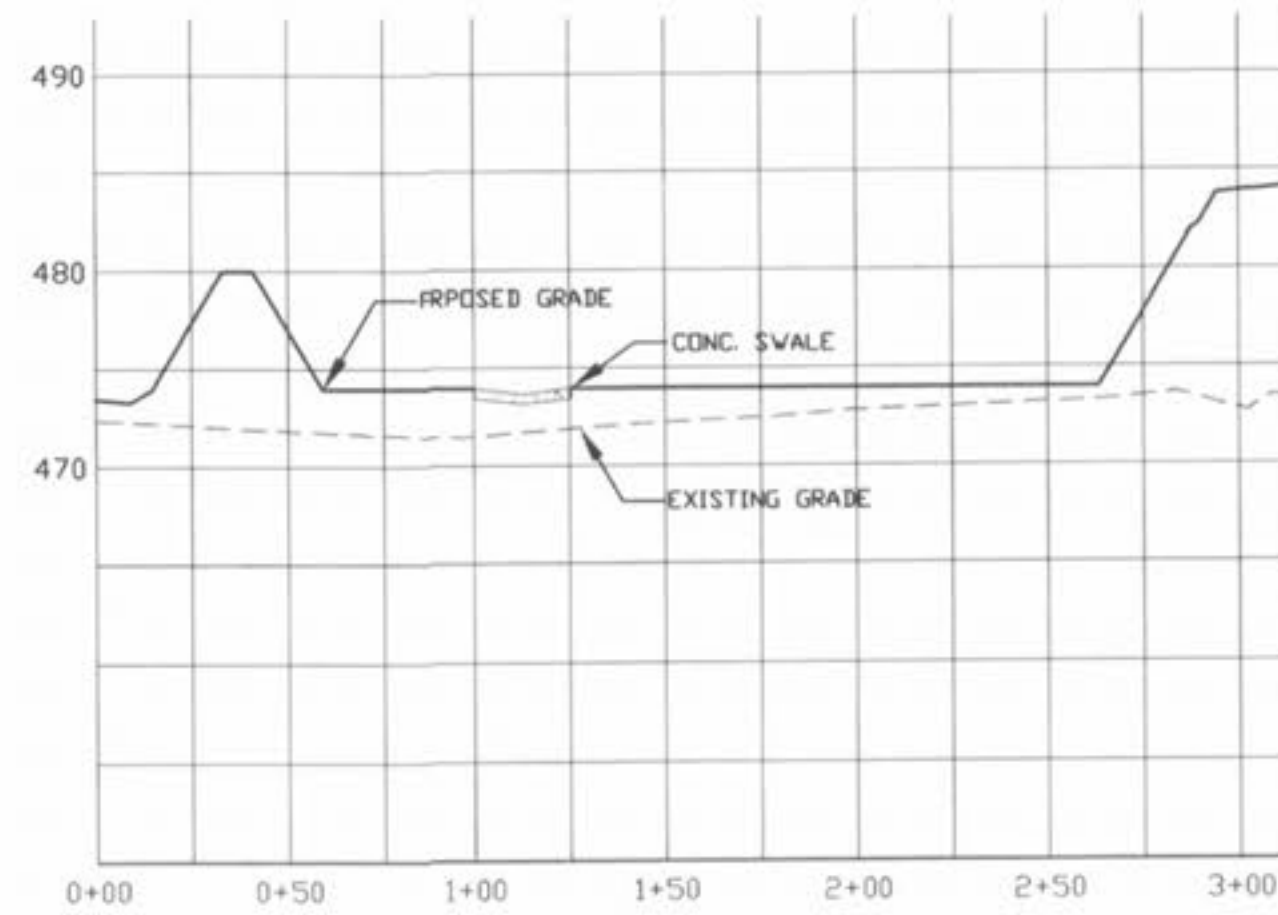
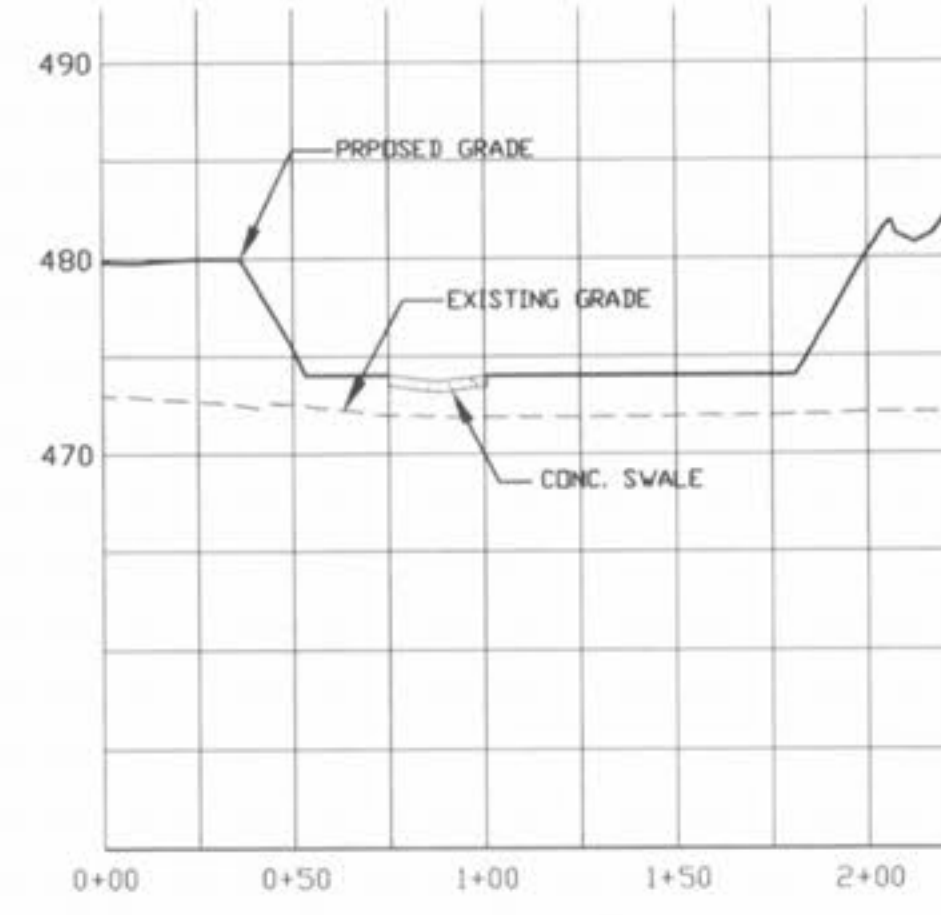


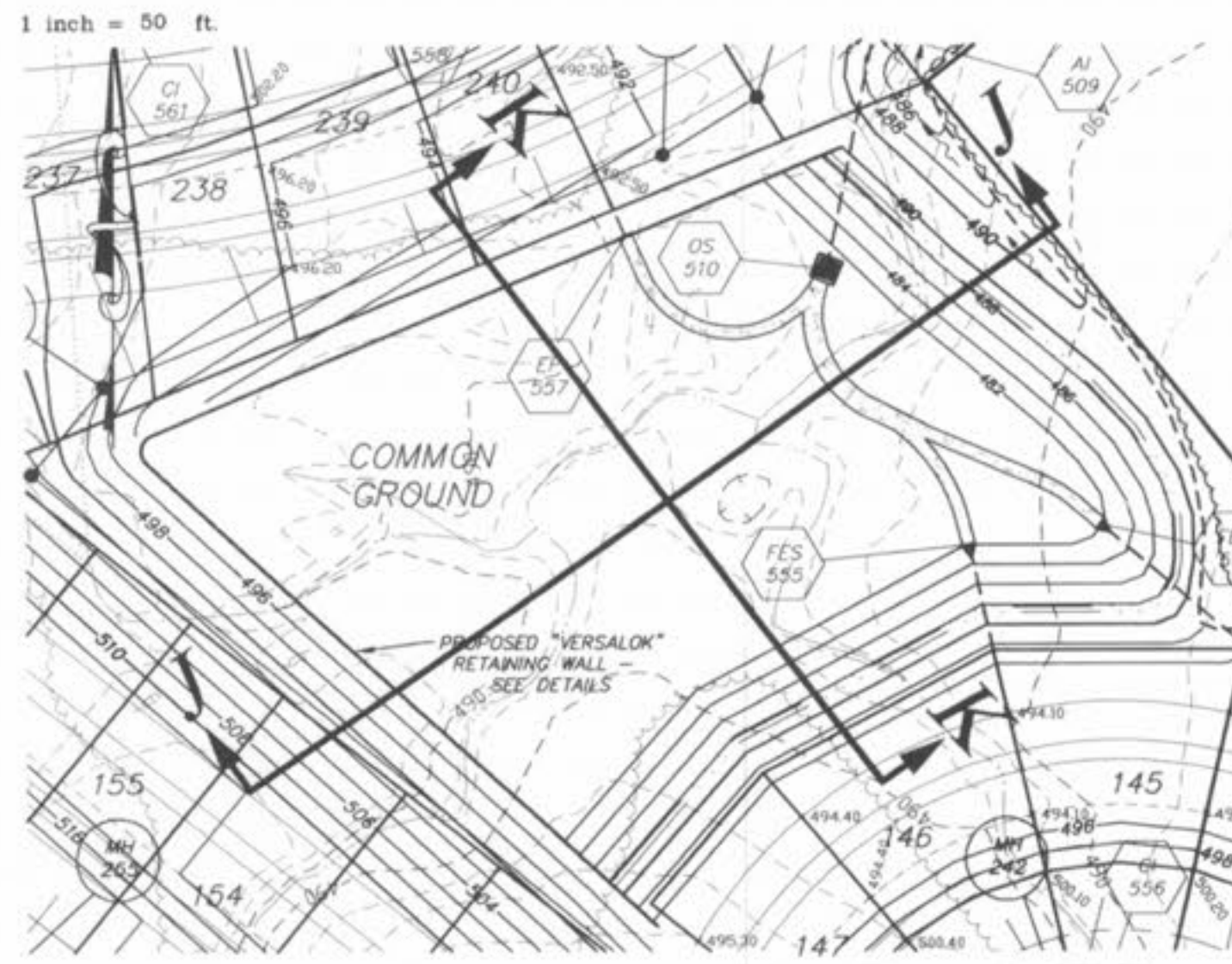
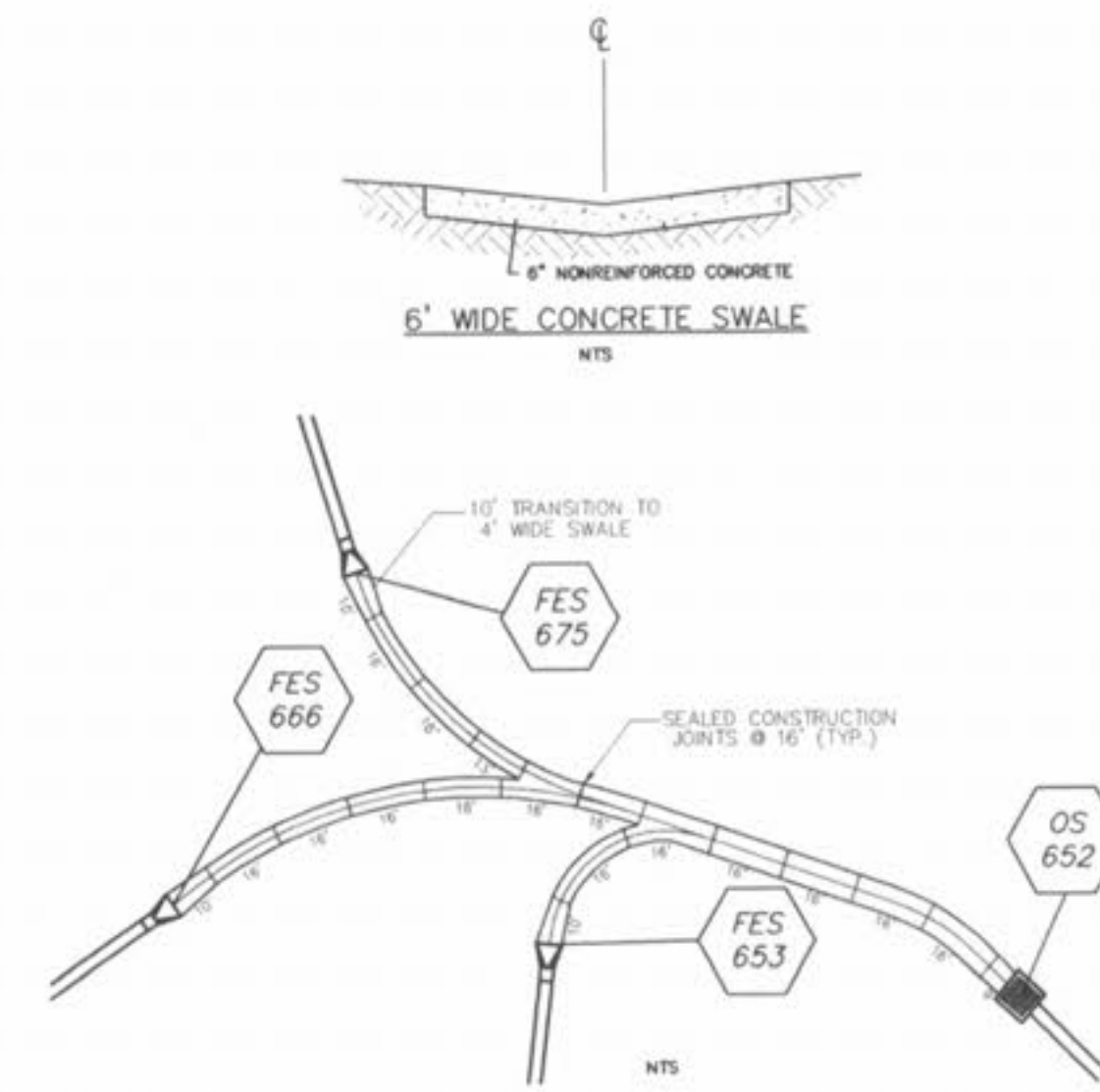
EAST CENTER BASIN



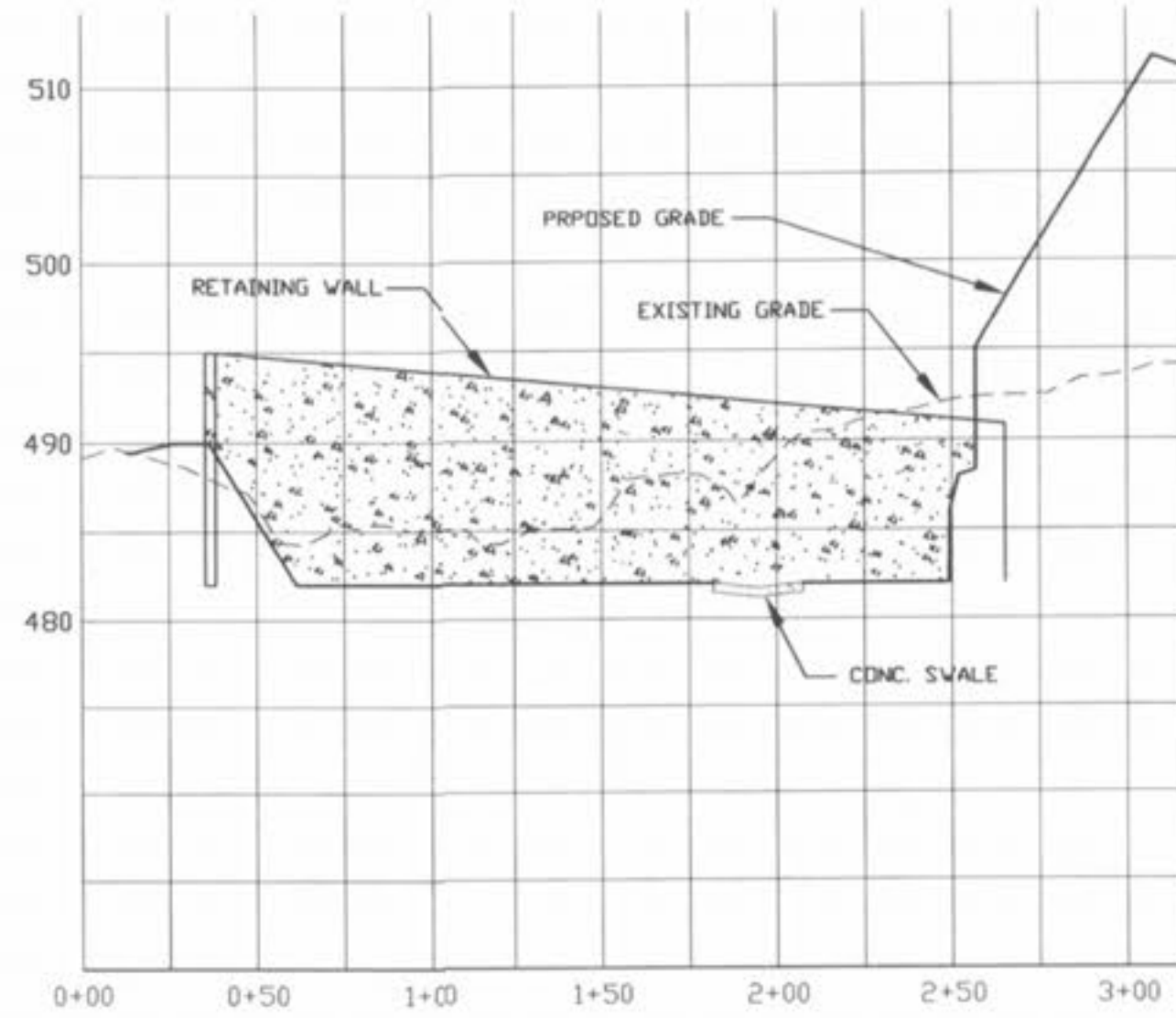
H-H
PROFILE SCALES:
HORIZONTAL: 1" = 50'
VERTICAL: 1" = 10'



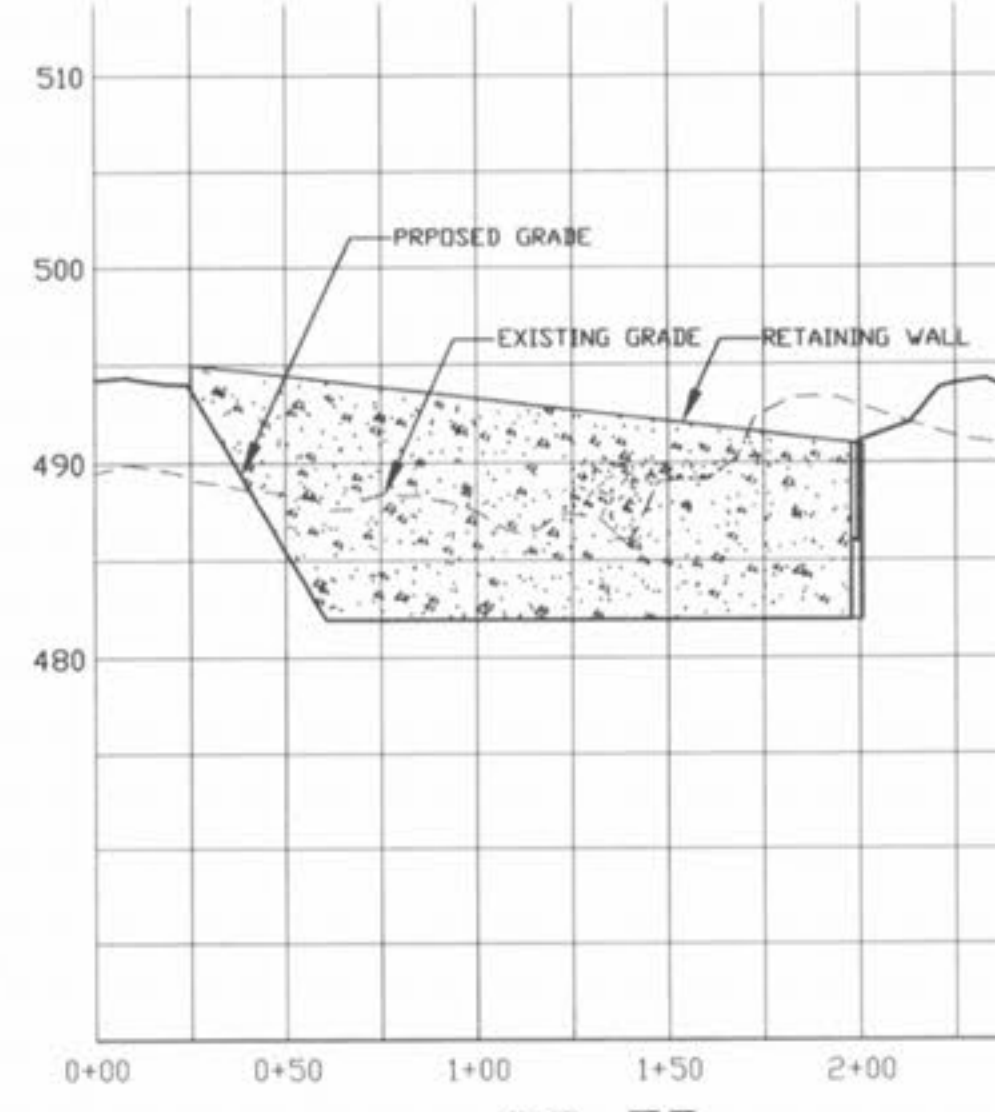
I-I
PROFILE SCALES:
HORIZONTAL: 1" = 50'
VERTICAL: 1" = 10'



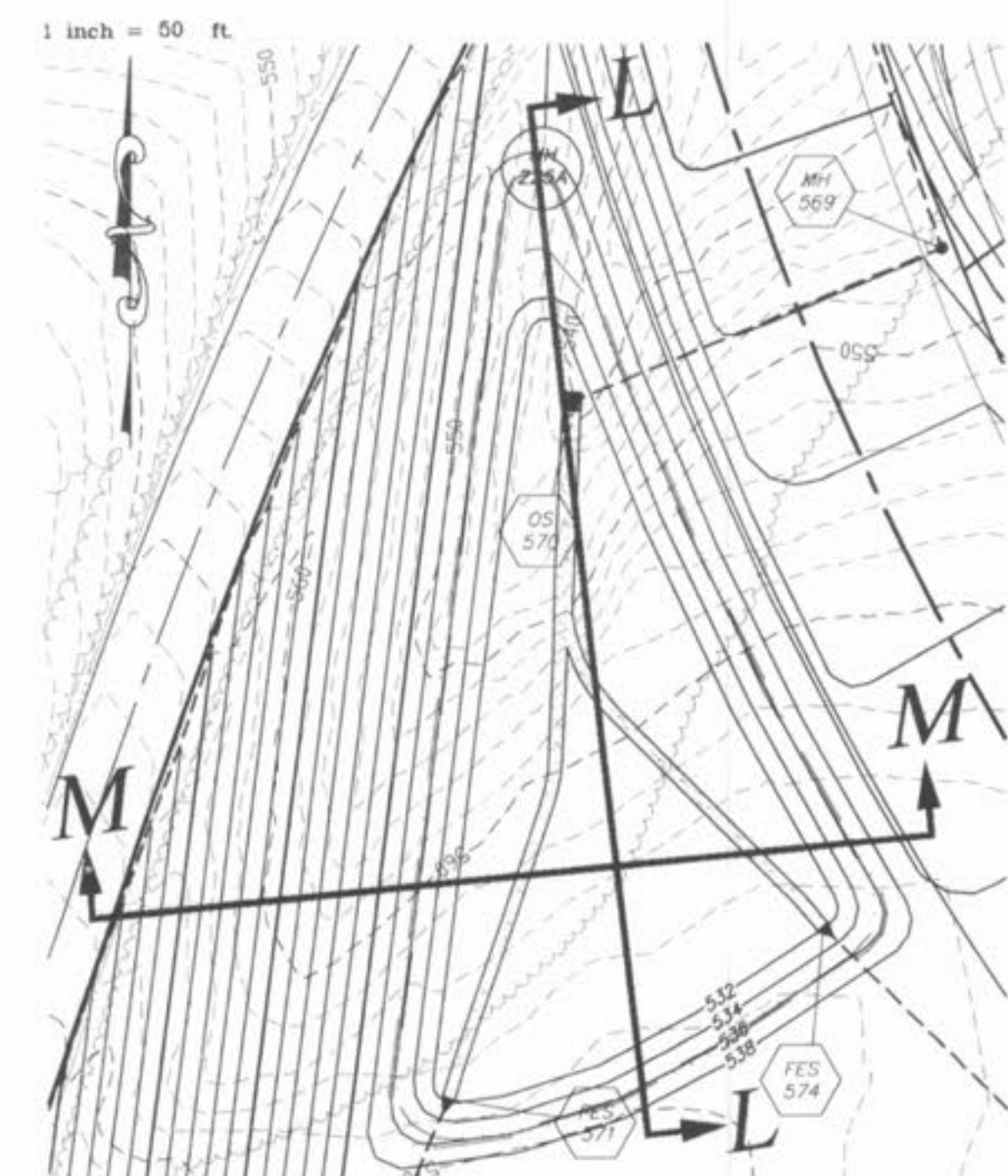
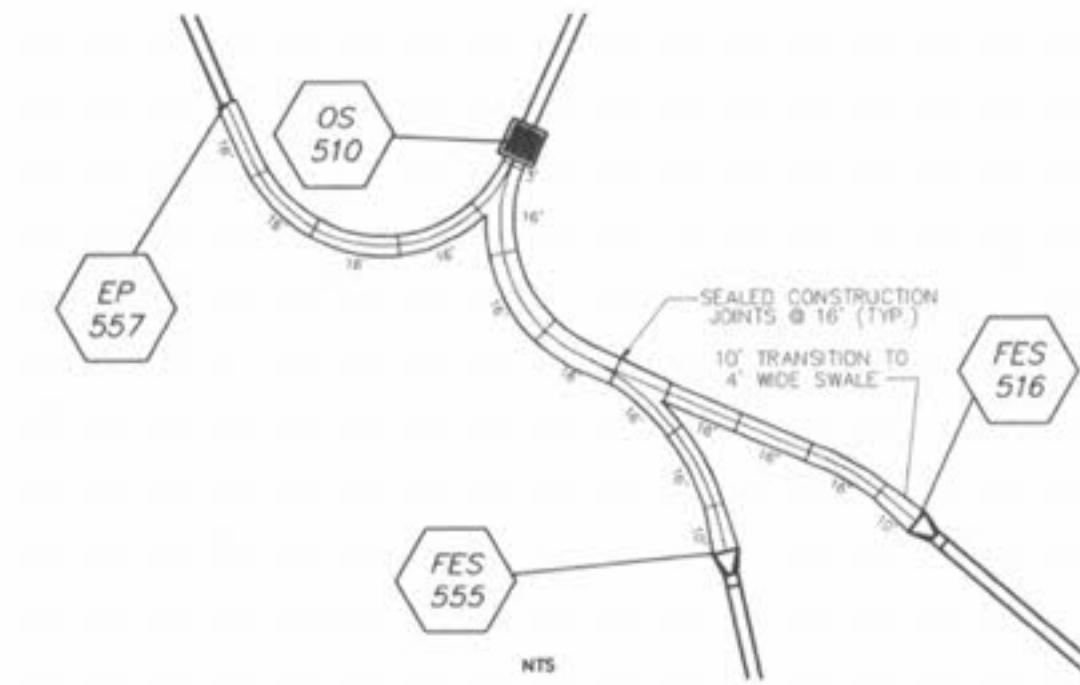
SOUTHEAST BASIN



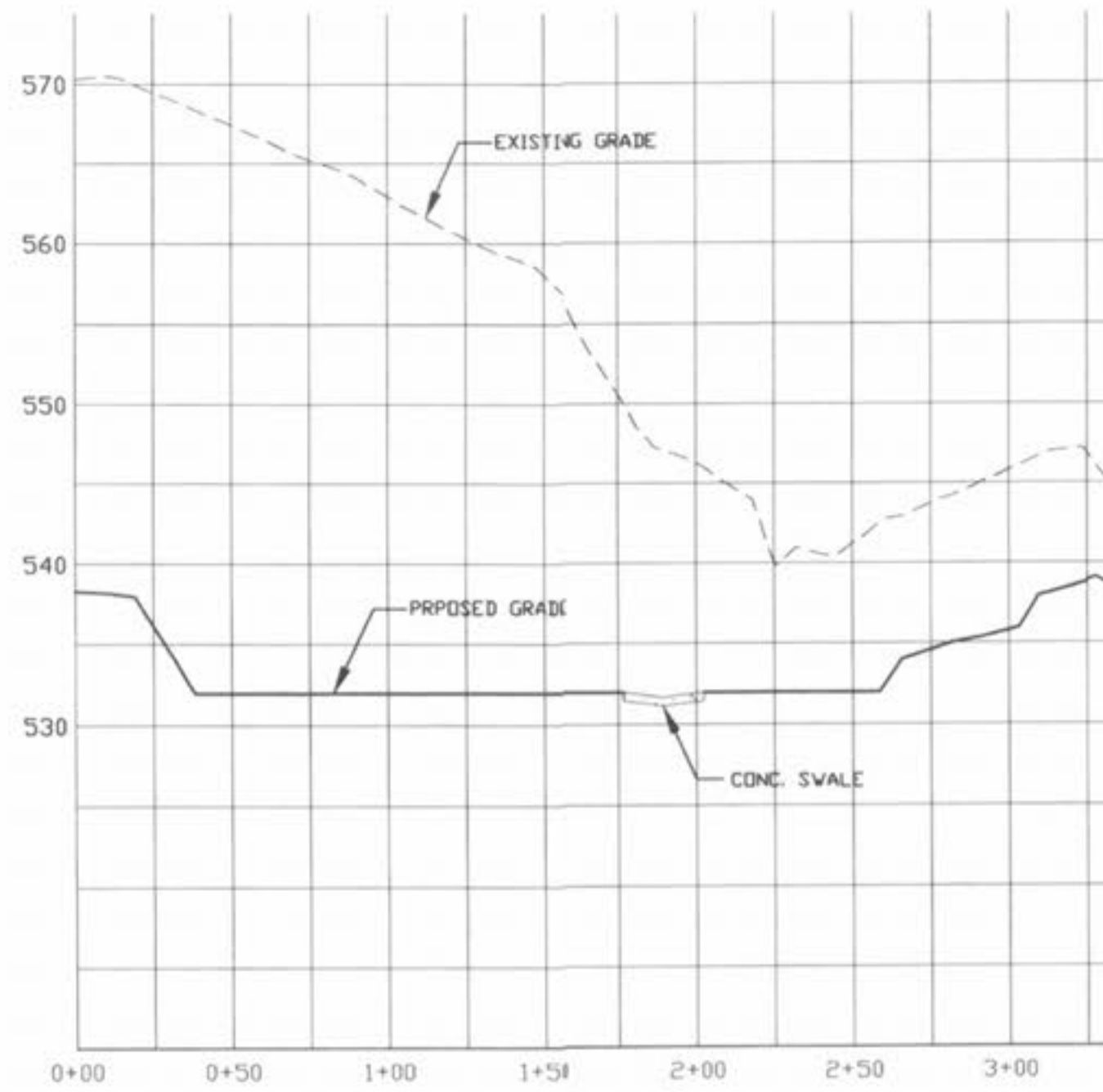
J-J
PROFILE SCALES:
HORIZONTAL: 1" = 50'
VERTICAL: 1" = 10'



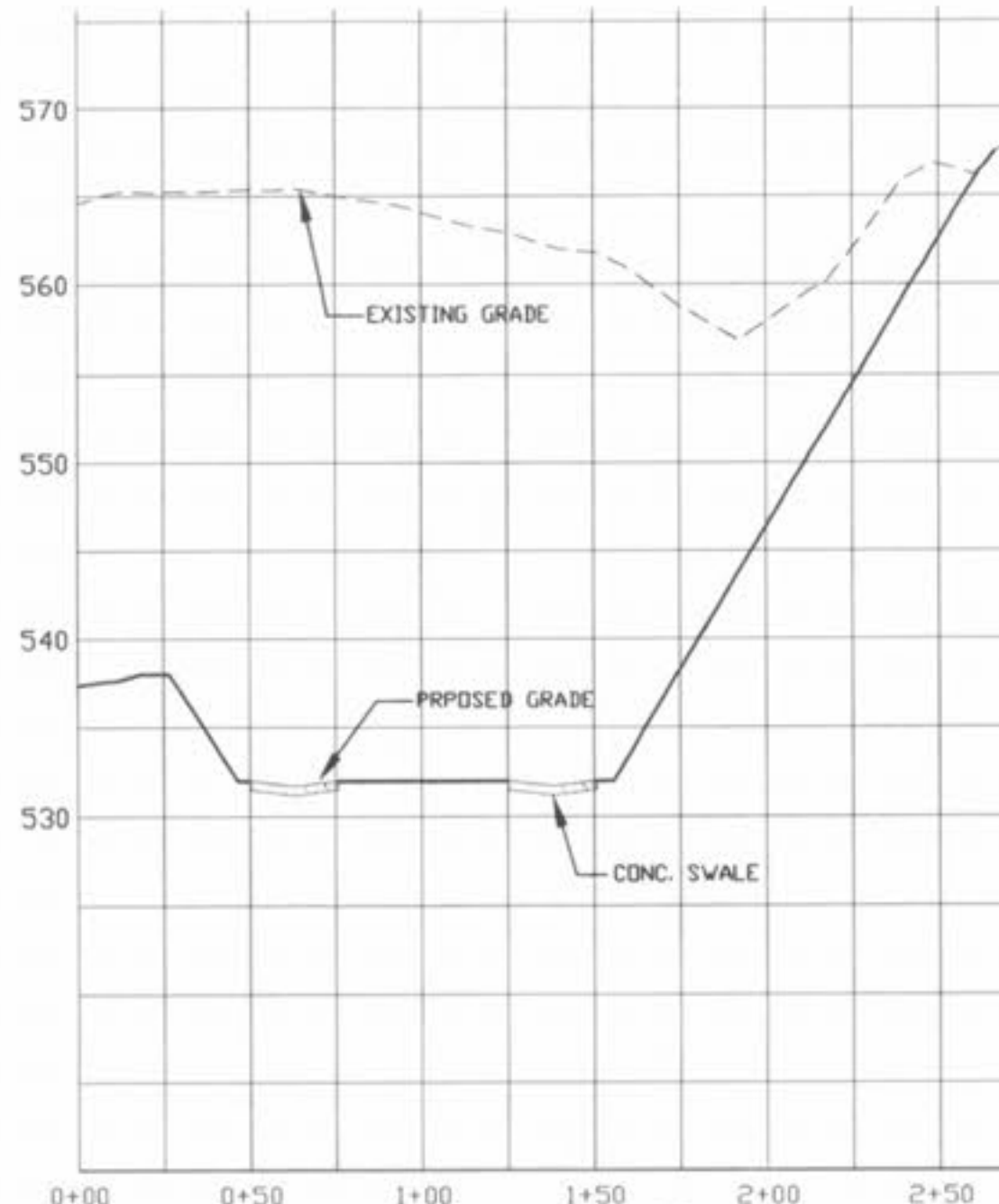
K-K
PROFILE SCALES:
HORIZONTAL: 1" = 50'
VERTICAL: 1" = 10'



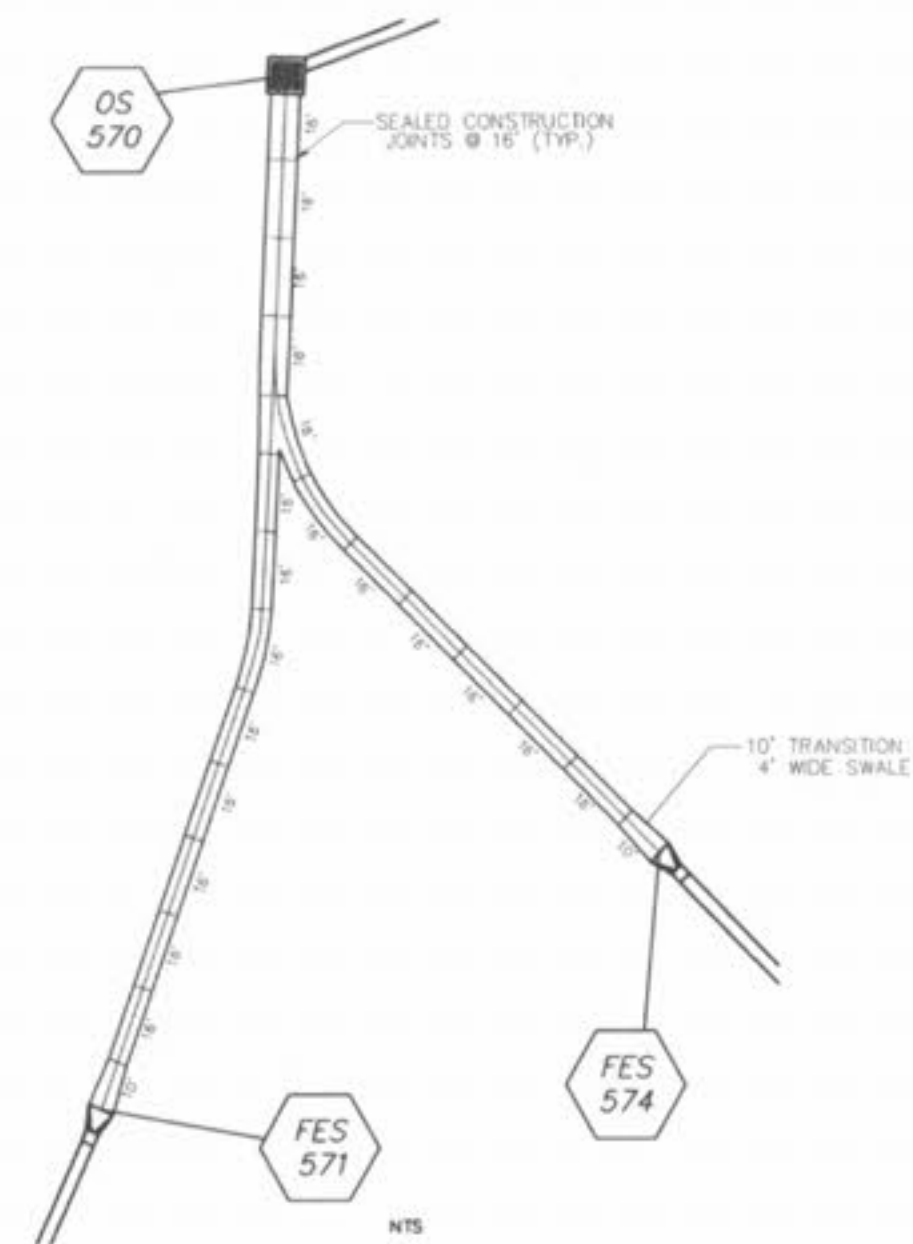
SW OUTLET BASIN



L-L
PROFILE SCALES:
HORIZONTAL: 1" = 50'
VERTICAL: 1" = 10'



M-M
PROFILE SCALES:
HORIZONTAL: 1" = 50'
VERTICAL: 1" = 10'



PICKETT RAY & SILVER
333 Mid Rivers Mall Drive
St. Peters, MO 65376
Phone (636) 397-1211
Fax (636) 397-1104

**CIVIL ENGINEERS
PLANNERS
LAND SURVEYORS**

**BROOKSIDE
DETENTION BASIN DETAILS**

Prepared For:
SUMMIT POINTE L.C.

239 FOX HILL ROAD
ST. CHARLES, MO. 63301
(636) 940-9500

REVISIONS	DATE	REV.	PER	CITY COMMENTS
3	08/11/05	REV.	PER	COMMENTS 07/26/05

ENGINEERS AUTHENTICATION
The responsibility for professional engineering liability on this project is hereby limited to the set of plans authenticated by the seal, signature, and date hereunder attached. Responsibility is disclaimed for all other engineering plans involved in this project and specifically excludes revisions after this date unless reauthenticated.

PICKETT RAY & SILVER, INC.
STATE OF MISSOURI
HAROLD J. BARTCH
REGISTERED PROFESSIONAL ENGINEER
NUMBER B-19751

DRAWN MAK	DATE FEB., 2005
CHECKED DWD	DATE FEB., 2005
PROJECT # 03029.SUPO.01R	TASK # 002 FIELD BOOK 847