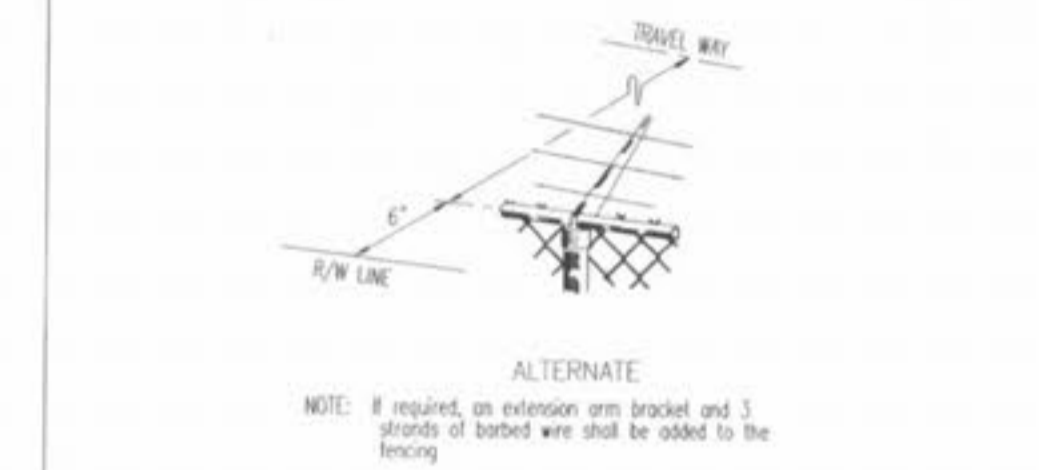
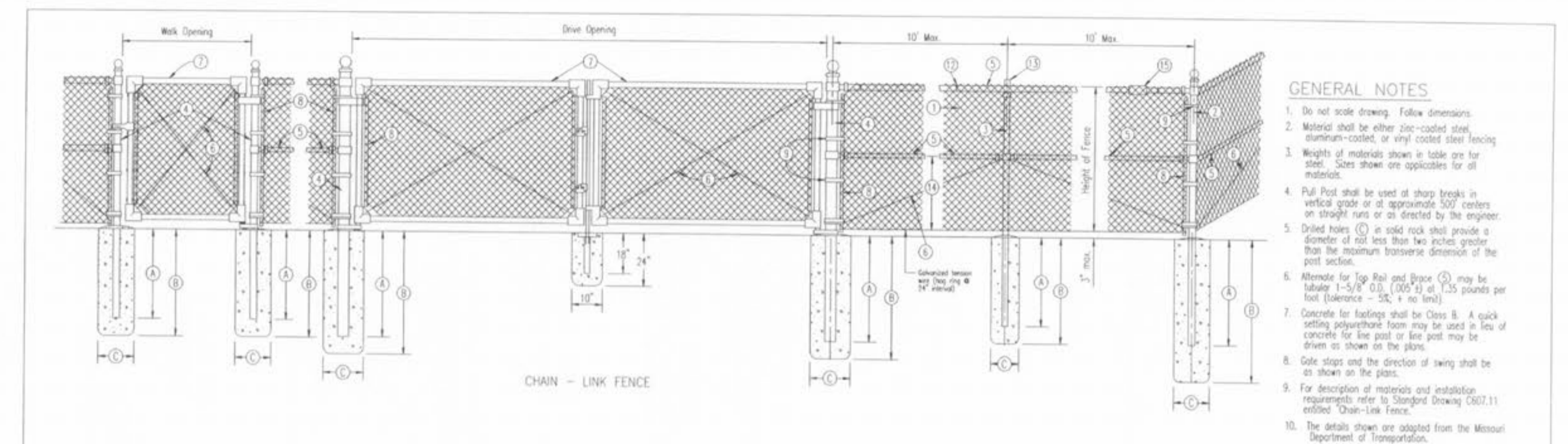


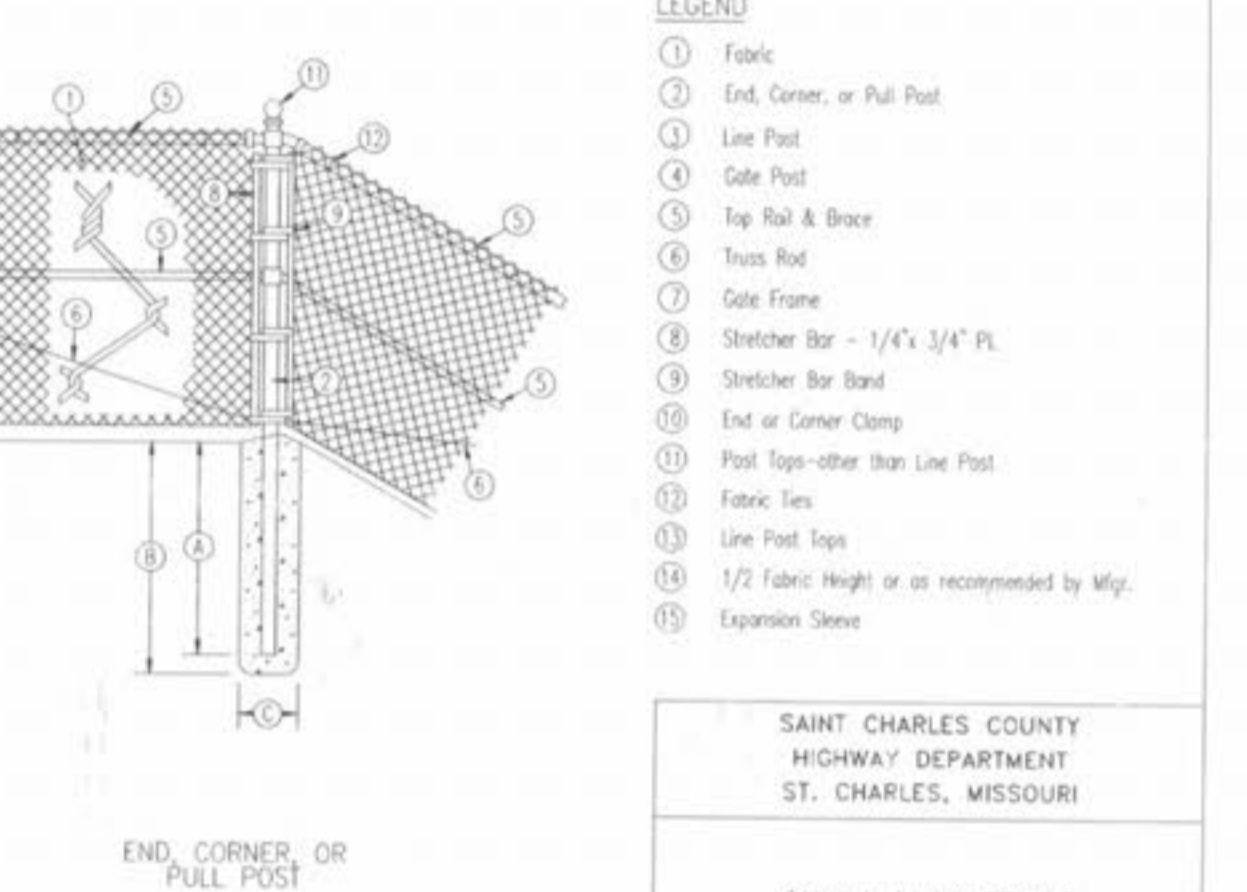
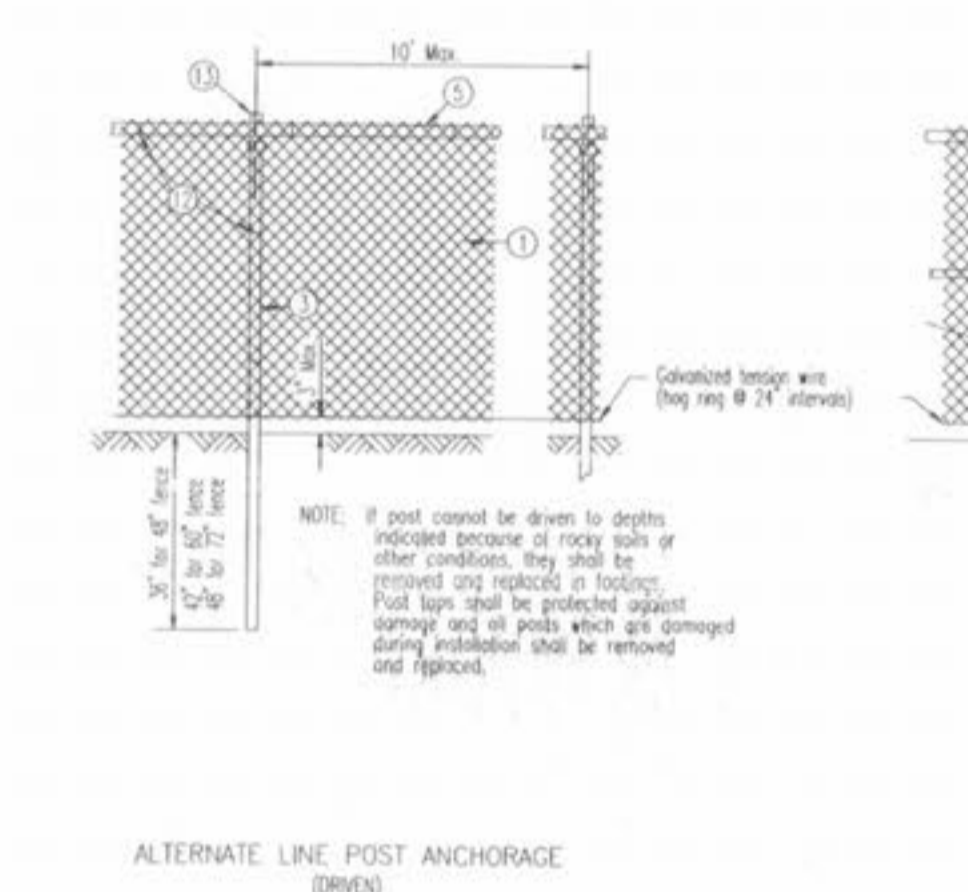
THESE PRELIMINARY DETAILS ARE INTENDED AS AN AID IN DESIGNING ATTRACTIVE, DURABLE RETAINING WALLS WITH VERSALOK STANDARD UNITS. FINAL DETERMINATION OF THE SUITABILITY OF ANY INFORMATION OR MATERIAL FOR THE USE CONTEMPLATED, AND ITS MANNER OF USE, IS THE SOLE RESPONSIBILITY OF THE USER. A FINAL PROJECT SPECIFIC DESIGN SHOULD BE PREPARED BY A QUALIFIED, LICENSED, PROFESSIONAL ENGINEER.

VERSALOK®
Retaining Wall Systems
Solid Solutions™

(800)770-4525 fax(651)770-4089
6346 Hwy35 Ste1, Oakdale, MN 55129



Description	Height of Fence			
	48"	60"	72"	84"
End Corner, & Pull Post	30"	36"	42"	48"
Line Post	1-1/2" x 12'	2-1/2" x 12'	3-1/2" x 12'	4-1/2" x 12'
Top Rail and Brace	1-1/4" x 12'	1-1/4" x 12'	1-1/4" x 12'	1-1/4" x 12'
Truss Rod	3/8"	3/8"	3/8"	3/8"
Gate Frame	1-1/2" x 12'	1-1/2" x 12'	1-1/2" x 12'	1-1/2" x 12'



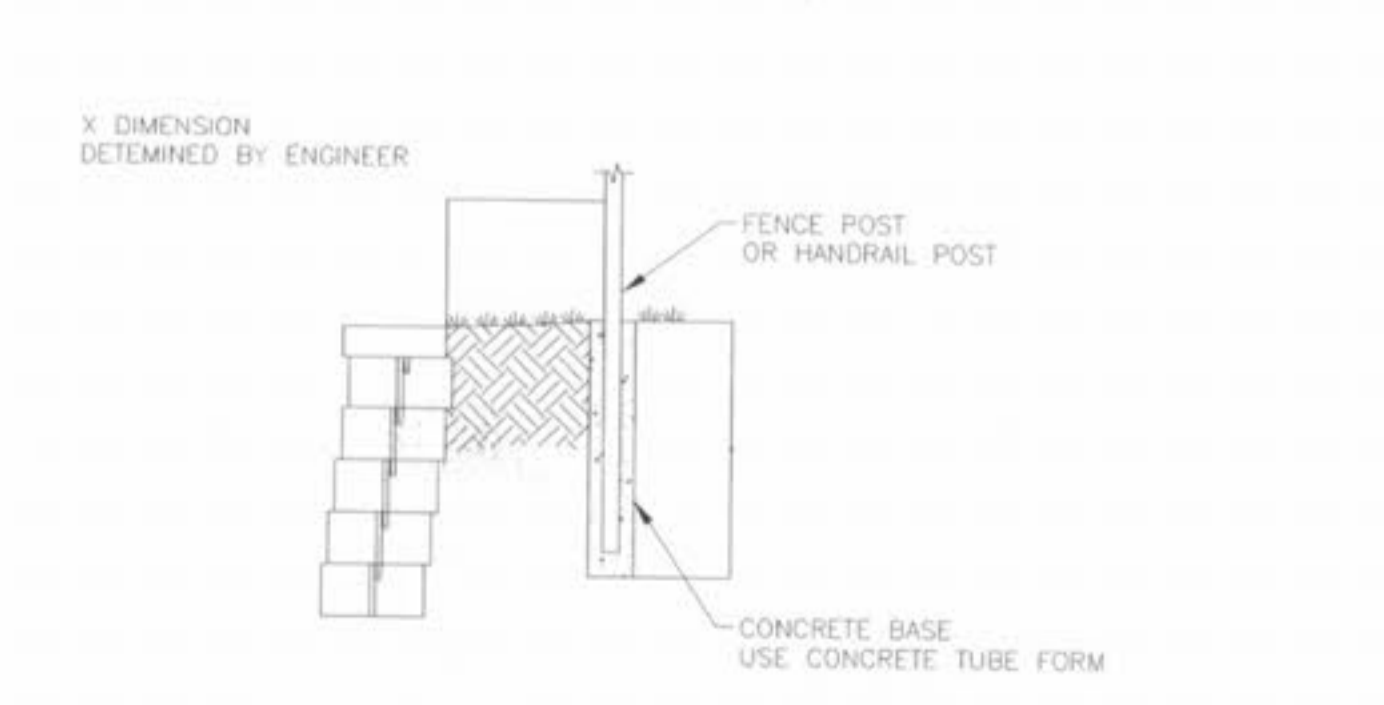
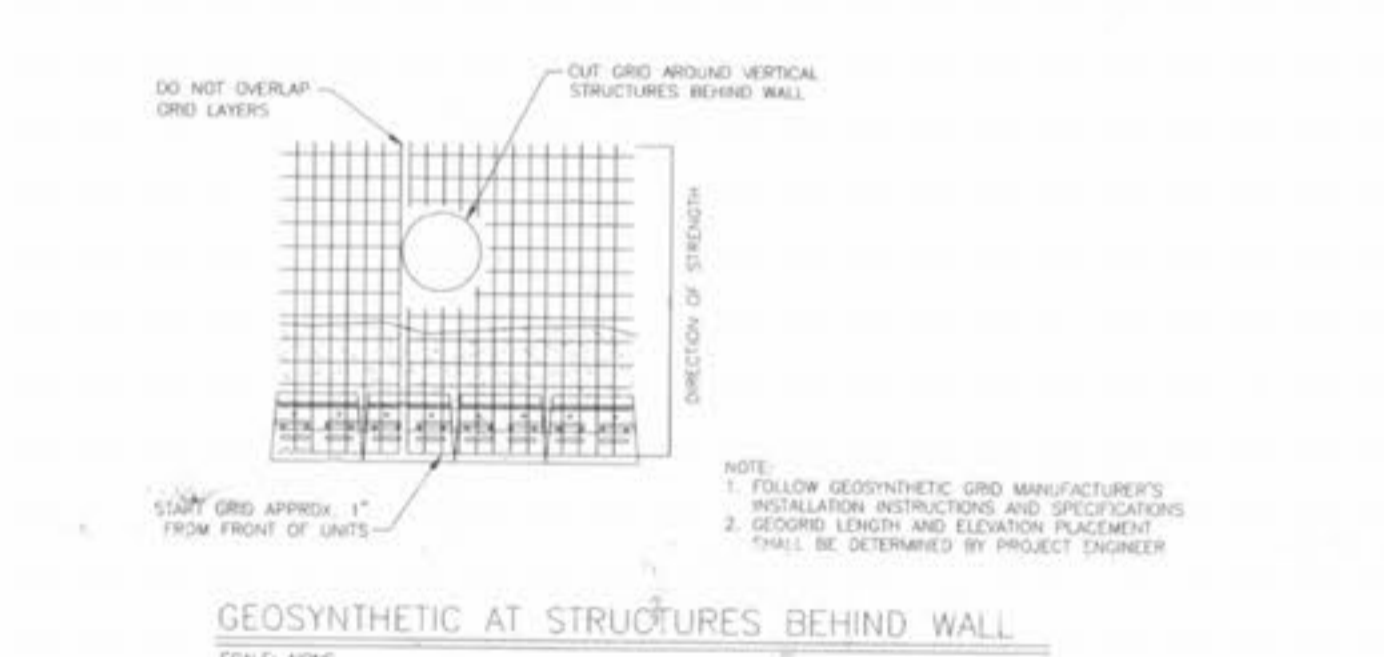
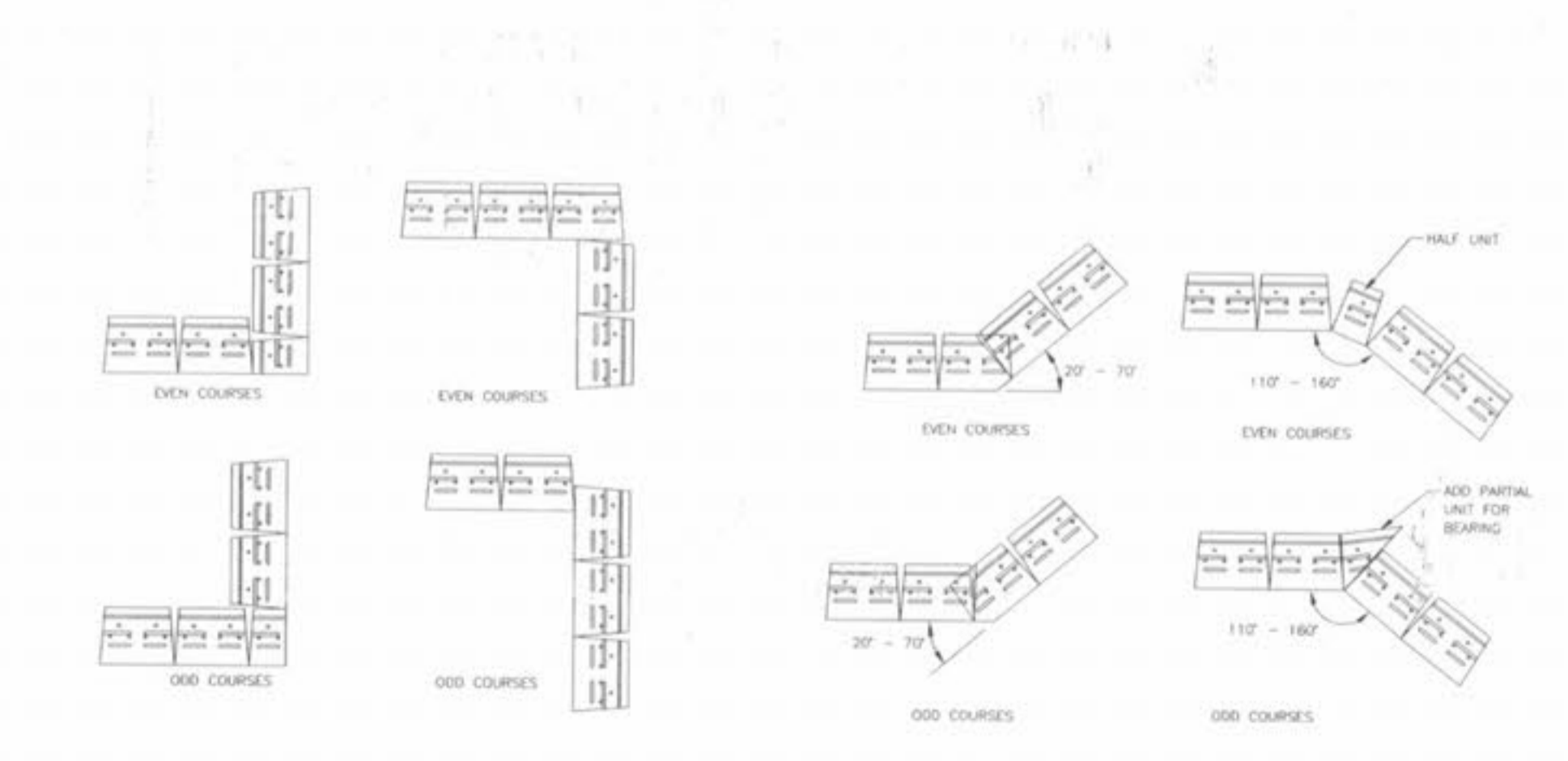
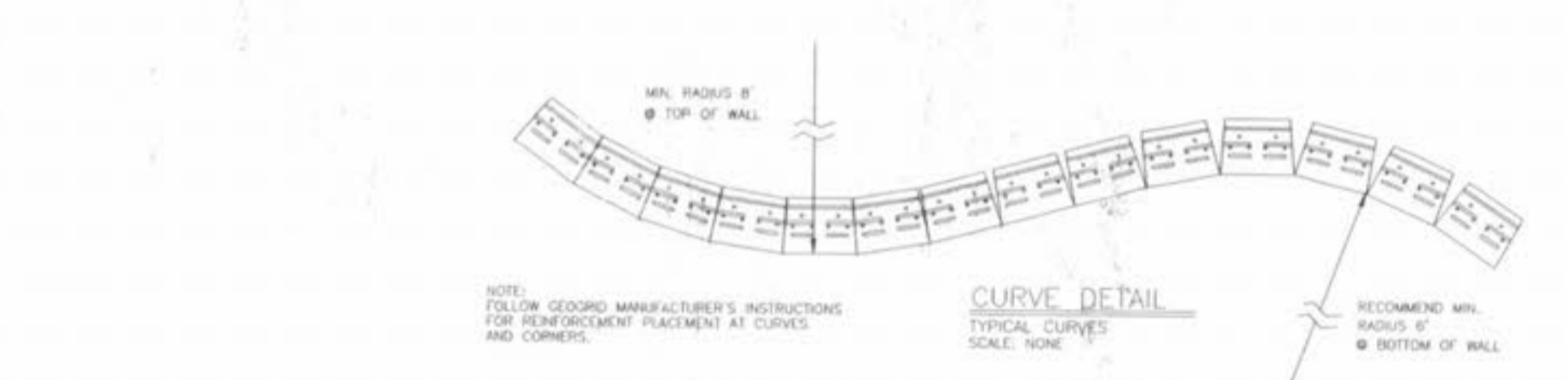
- GENERAL NOTES**
- Do not scale drawing. Follow dimensions.
 - Material shall be either zinc-coated steel, aluminum-coated, or vinyl coated steel fencing.
 - Weights of materials shown in table are for chain-link. Sizes shown are opposites for all materials.
 - Pull Post shall be used of sharp breaks in vertical grade or at approximate 500' centers on straight runs or as directed by the engineer.
 - Dried holes (H) in solid rock shall provide a diameter of not less than two inches greater than the maximum transverse dimension of the post section.
 - Alternate for Top Rail and Brace (B) may be tubular 1-5/8" O.D. (100#) at 1.35 pounds per foot (tolerance = .5%, 4' no limit).
 - Concrete for footings shall be Class B. A quick setting polyurethane foam may be used in lieu of concrete for line post or pull post may be shown as shown on the plans.
 - Gate stops and the direction of swing shall be as shown on the plans.
 - For description of materials and installation requirements refer to Standard Drawing C607.11 entitled "Chain-Link Fence".
 - The details shown are adopted from the Missouri Department of Transportation.

- LEGEND**
- Fabric
 - End, Corner, or Pull Post
 - Line Post
 - Gate Post
 - Top Rail & Brace
 - Truss Rod
 - Gate Frame
 - Stretchers - 1/4" x 3/4" PL
 - Stretchers Bar Band
 - End or Corner Clamp
 - Post Tops - other than Line Post
 - Fabric Ties
 - Line Post Tops
 - 1/2" Fabric Height or as recommended by Mfg.
 - Expansion Sleeve

SAINT CHARLES COUNTY
HIGHWAY DEPARTMENT
ST. CHARLES, MISSOURI

CHAIN-LINK FENCE

DATE: December, 2000 DRAWING: C607.10



NOTE: RETAINING WALL DESIGN IS TO BE BY OTHERS. PLANS ALONG WITH STRUCTURAL CALCULATIONS WILL BE PROVIDED TO THE CITY AND APPROVED PRIOR TO CONSTRUCTION OF WALLS.

PICKETT RAY & SILVER

CIVIL ENGINEERS
PLANNERS
LAND SURVEYORS

333 Mid Rivers Mall Drive
St. Peters, MO 63376
Phone (636) 397-1211
Fax (636) 397-1104

BROOKSIDE
RETAINING WALL DETAILS

Prepared For:
SUMMIT POINTE L.C.

139 FOX HILL ROAD
ST. CHARLES, MO 63301
(636) 940-9300

REV. NO.	DATE	REV. PER CITY COMMENTS
1	8/11/05	REV. PER CITY COMMENTS 7/26/05
2	9/19/05	REV. PER CITY COMMENTS 9/12/05
3		
4		
5		
6		

ENGINEERS AUTHENTICATION

The responsibility for professional engineering liability on this project is hereby limited to the set of plans authenticated by the seal, signature, and date hereunder attached. Responsibility is disclaimed for all other engineering plans involved in this project and specifically excludes revisions after this date unless reauthenticated by Pickett, Ray & Silver, Inc.

PICKETT RAY & SILVER, INC.
Professional Engineer
No. 23345
Missouri

DRAWN	DATE
RDW	FEB., 2005
CHECKED	DATE
DWD	FEB., 2005
PROJECT #	03029 SUP0.01R
TASK #	002 FIELD BOOK 847