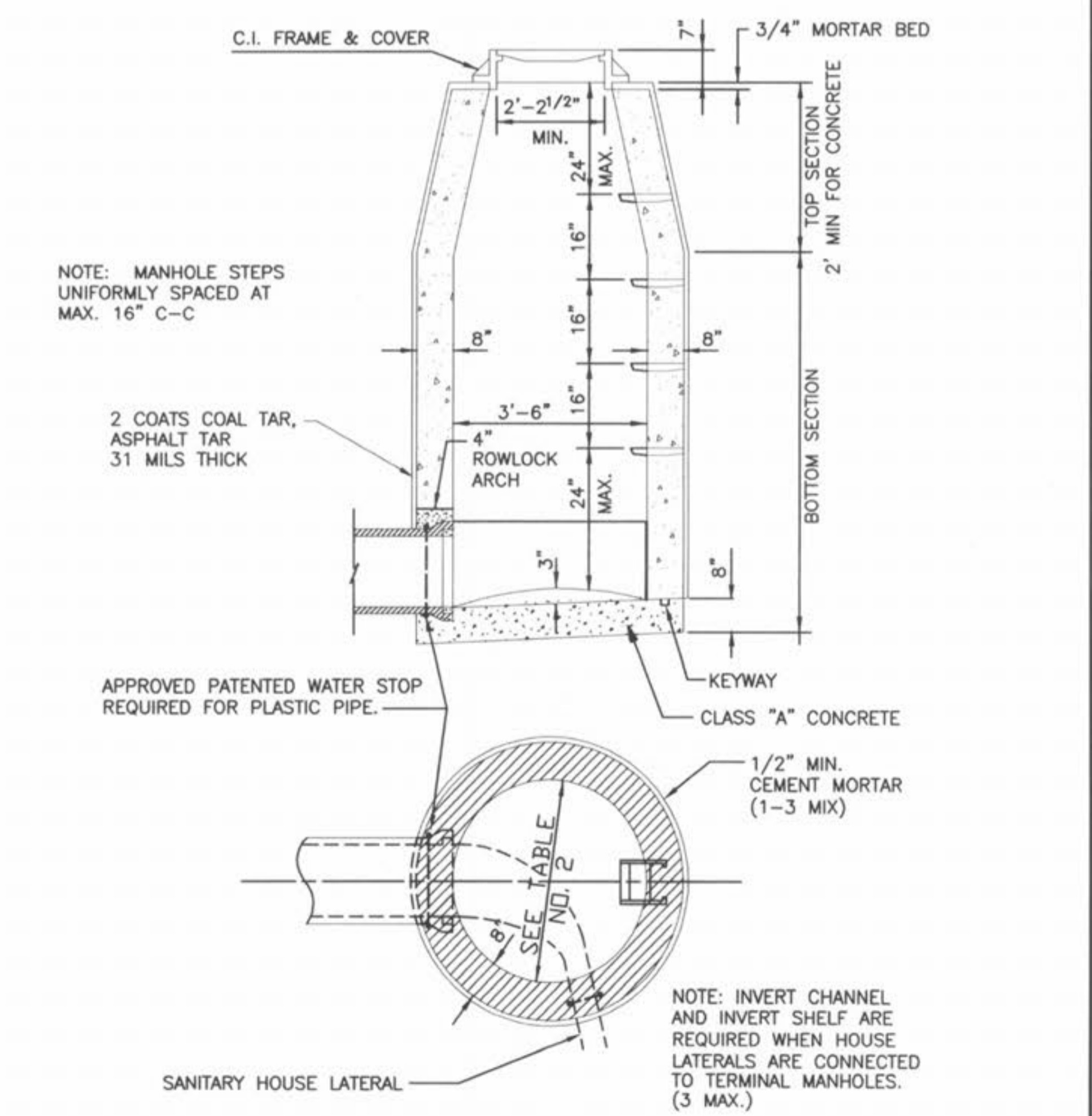
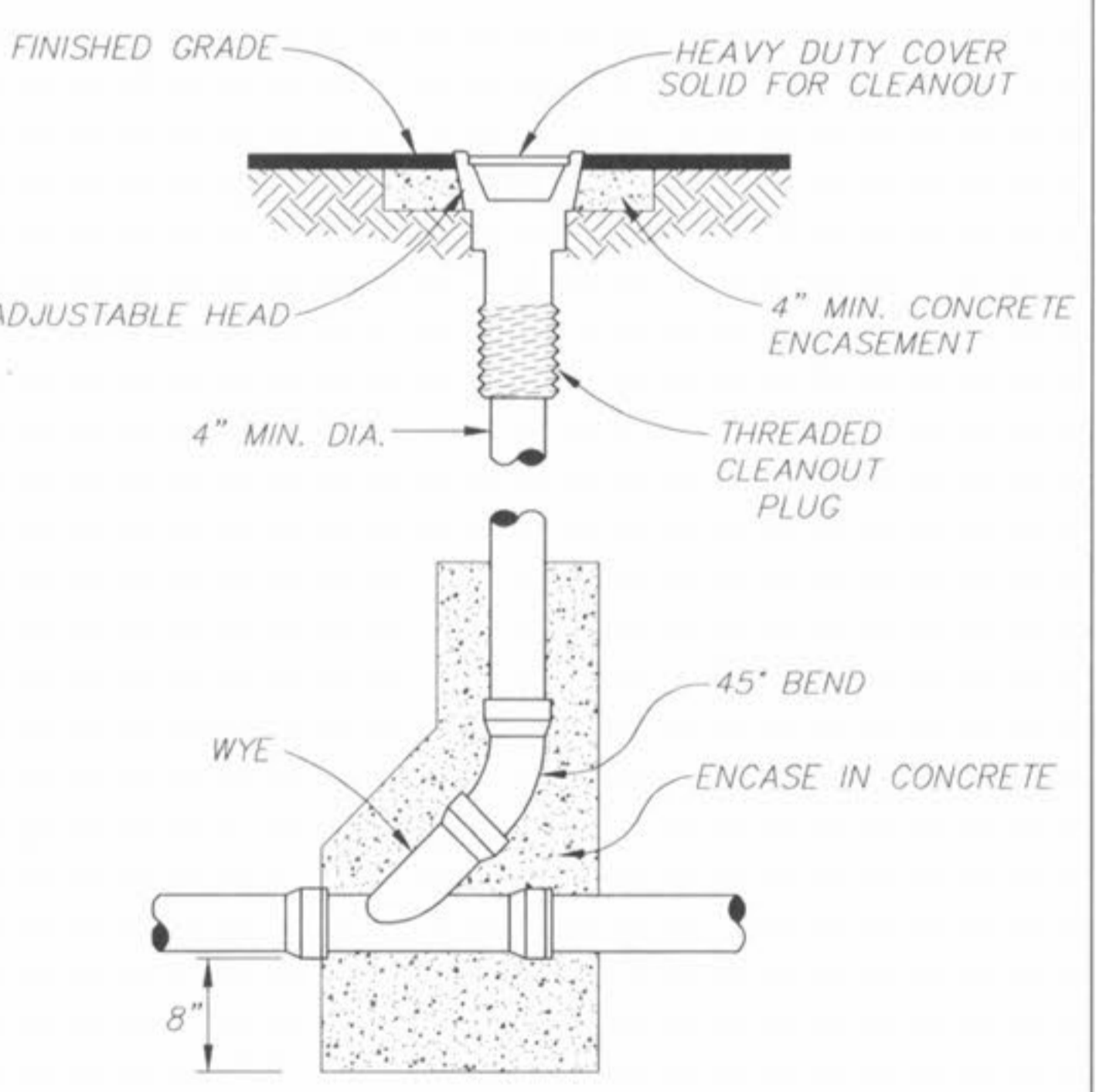


HOUSE CONNECTION TO EXISTING WYE

SUBMIT SAMPLE WYE TO THE CITY OF O'FALLON PRIOR TO CONSTRUCTION FOR APPROVAL.



PICKETT RAY & SILVER

CIVIL ENGINEERS
PLANNERS
LAND SURVEYORS

333 Mid Rivers Mall Drive
St. Peters, MO 63376
Phone (636) 397-1211
Fax (636) 397-1104

BROOKSIDE CONSTRUCTION DETAILS

Prepared For:
SUMMIT POINTE L.C.

259 FOX HILLE ROAD
ST. CHARLES, MO 63301
636-940-9900

REVISIONS	NO.	DATE	REV. PER CITY COMMENTS
	3	8/11/05	REV. PER CITY COMMENTS 7/20/05

ENGINEERS AUTHENTICATION

The responsibility for professional engineering liability on this project is hereby limited to the set of plans authenticated by the seal, signature, and date hereunder attached. Responsibility is disclaimed for all other engineering plans involved in this project and specifically excludes revisions after this date unless reauthenticated.

PICKETT RAY & SILVER, INC.

HAROLD J. BARCH
REGISTERED PROFESSIONAL ENGINEER
NO. 1751

DRAWN	DATE
CAD	FEB. 2005
CHECKED	DATE
DWD	FEB. 2005
PROJECT #	03029.SUP0.01R
TASK #	002 FIELD BOOK 847

I:\Users\rs1\Projects\03029\cvg\03029-DETAILS.dwg, 8/11/2005 1:10:11 PM, MIKE K.