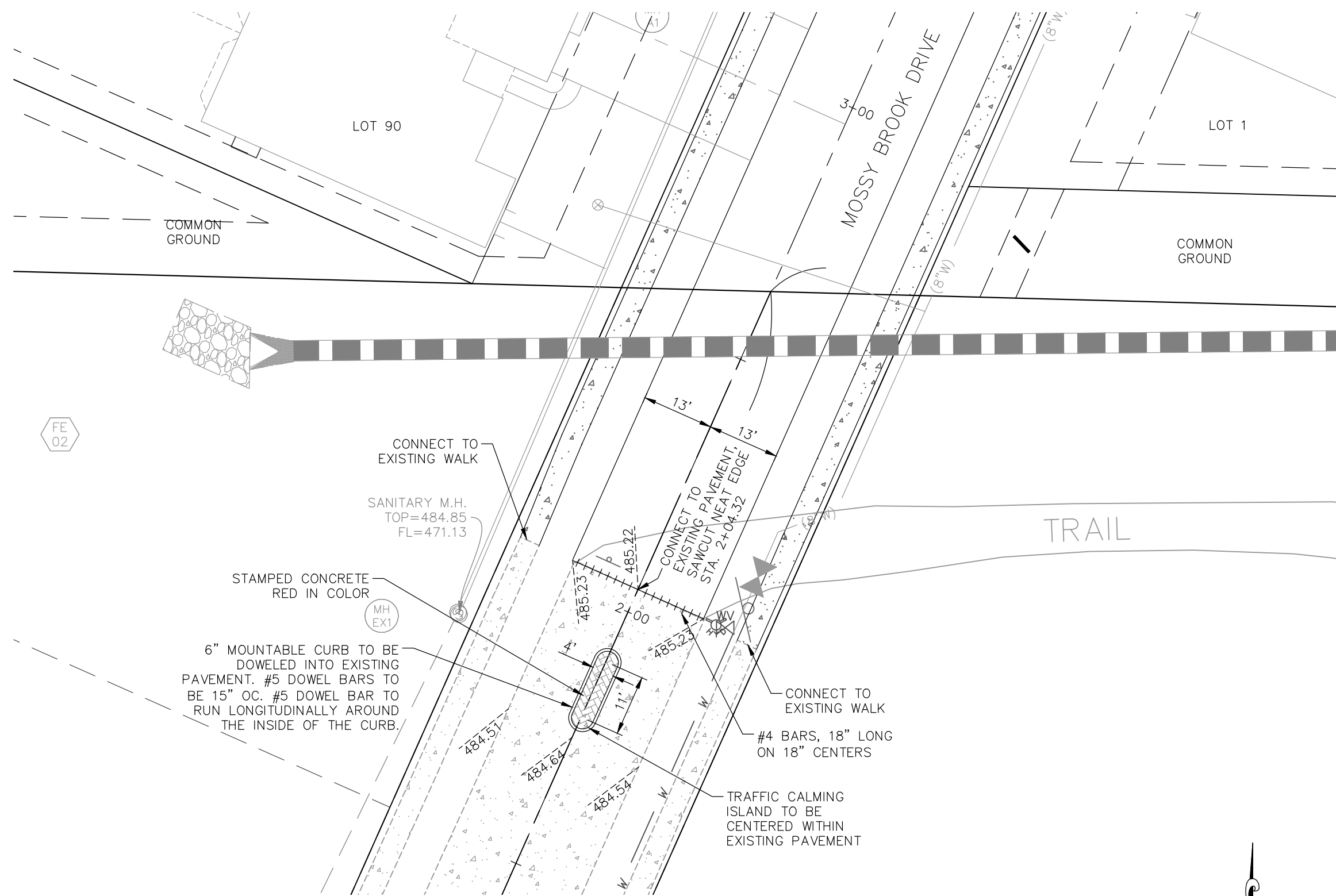
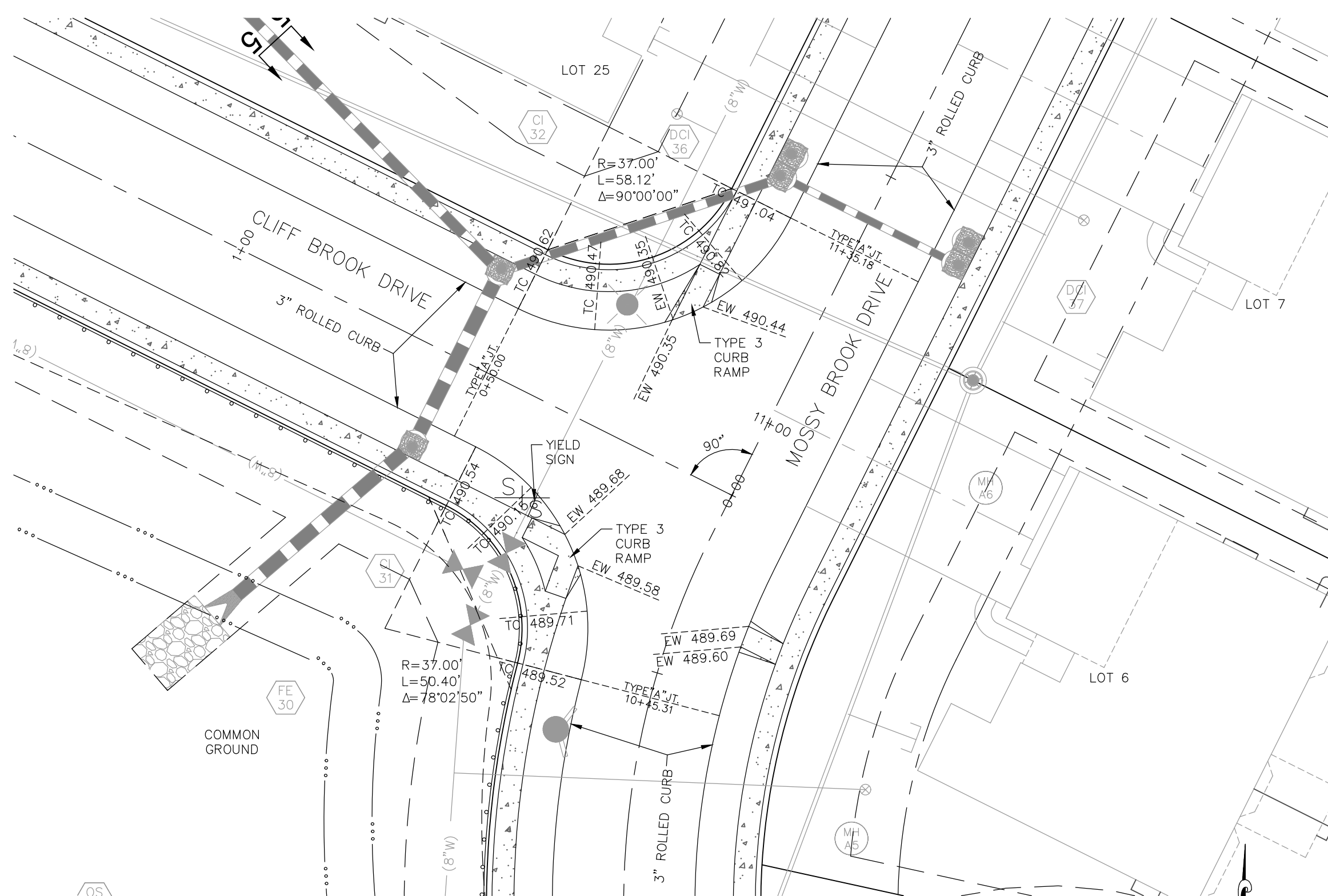


Drawing name: V:\1910344-Feldewert\Drawings\Engineering\Improvements\0344\IMP.dwg Printed on: Jun 15, 2021, 7:55am Printed by: janderhaus

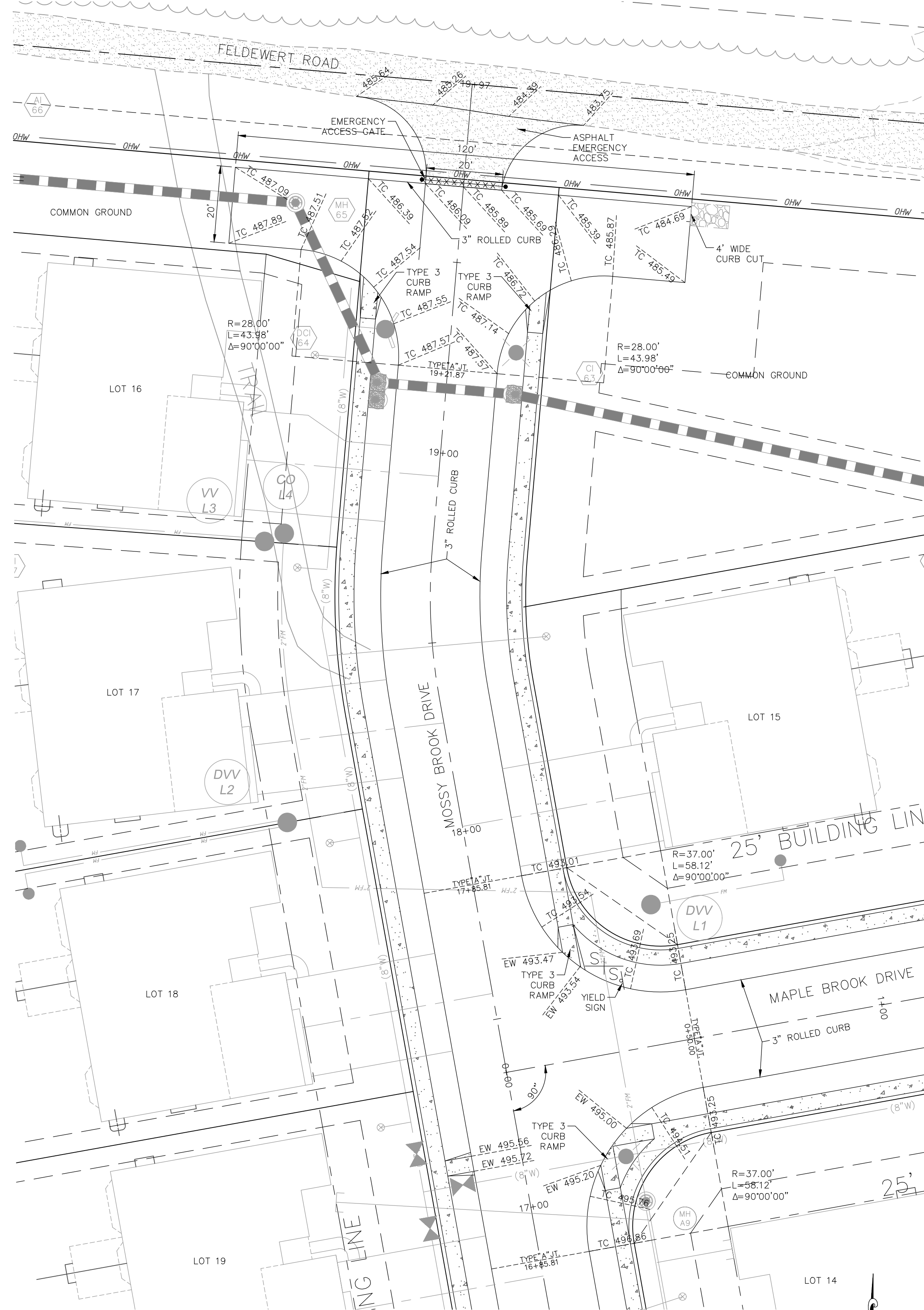


PAVEMENT CONNECTION DETAIL
SCALE: 1"=20'



INTERSECTION DETAIL
SCALE: 1"=20'

NOTE:
ALL INTERSECTION ROUNDINGS AND
CUL-DE-SAC WARPINGS ARE TO BE
CONSTRUCTED TO ENSURE POSITIVE
STORM WATER DRAINAGE. NO STORM
WATER PONDING WILL BE ALLOWED.



INTERSECTION DETAIL
SCALE: 1"=20'

ISSUE	REMARKS/DATE
1	2020-12-31 INITIAL SUBMITTAL
2	2021-02-23 CITY COMMENTS
3	2021-04-13 CITY COMMENTS
4	2021-05-26 CITY COMMENTS
5	2021-06-15 FOR APPROVAL

PROJECT TITLE

**BROOKSIDE
ADDITION**

OFALLON, MISSOURI

THE STERLING CO.
ENGINEERS & SURVEYORS

5055 New Baumgartner Road
St. Louis, Missouri 63129
Ph 314-487-0440 Fax 314-487-8944
www.sterling-eng-survey.com
Corporate Certificate of Authority #001348

The Professional Engineer's seal and signature shall be on the sheet. All drawings, documents or other documents not containing the seal and signature shall not be considered. The Professional Engineer shall be responsible for the accuracy of the drawings and shall not be responsible for the accuracy of the documents not containing the seal and signature.



Date: 06-15-2021
Michael G. Boering, PE
License No. MO E-28643
Professional Engineer

LOMBARDO HOMES OF ST. LOUIS, LLC
2289 TECHNOLOGY DRIVE, SUITE 150
OFALLON, MISSOURI 63368
Ph. 636-265-2710
Fax 636-695-3195

WARPING DETAILS

P+Z No. 20-001538
City No. 20-009251
Date: June 15, 2021
Job No. 19-10-344

Page No.

10.1

IMP