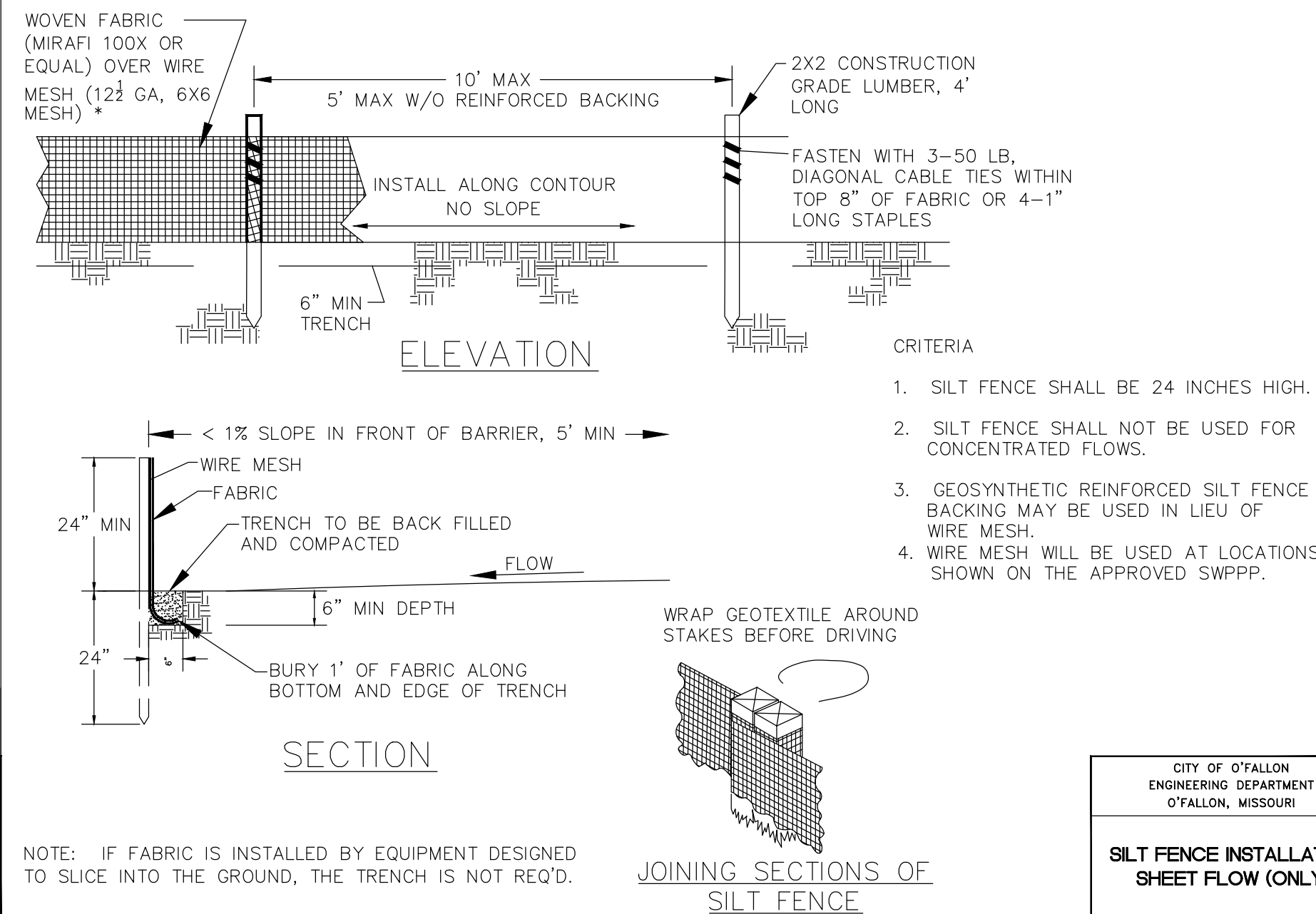


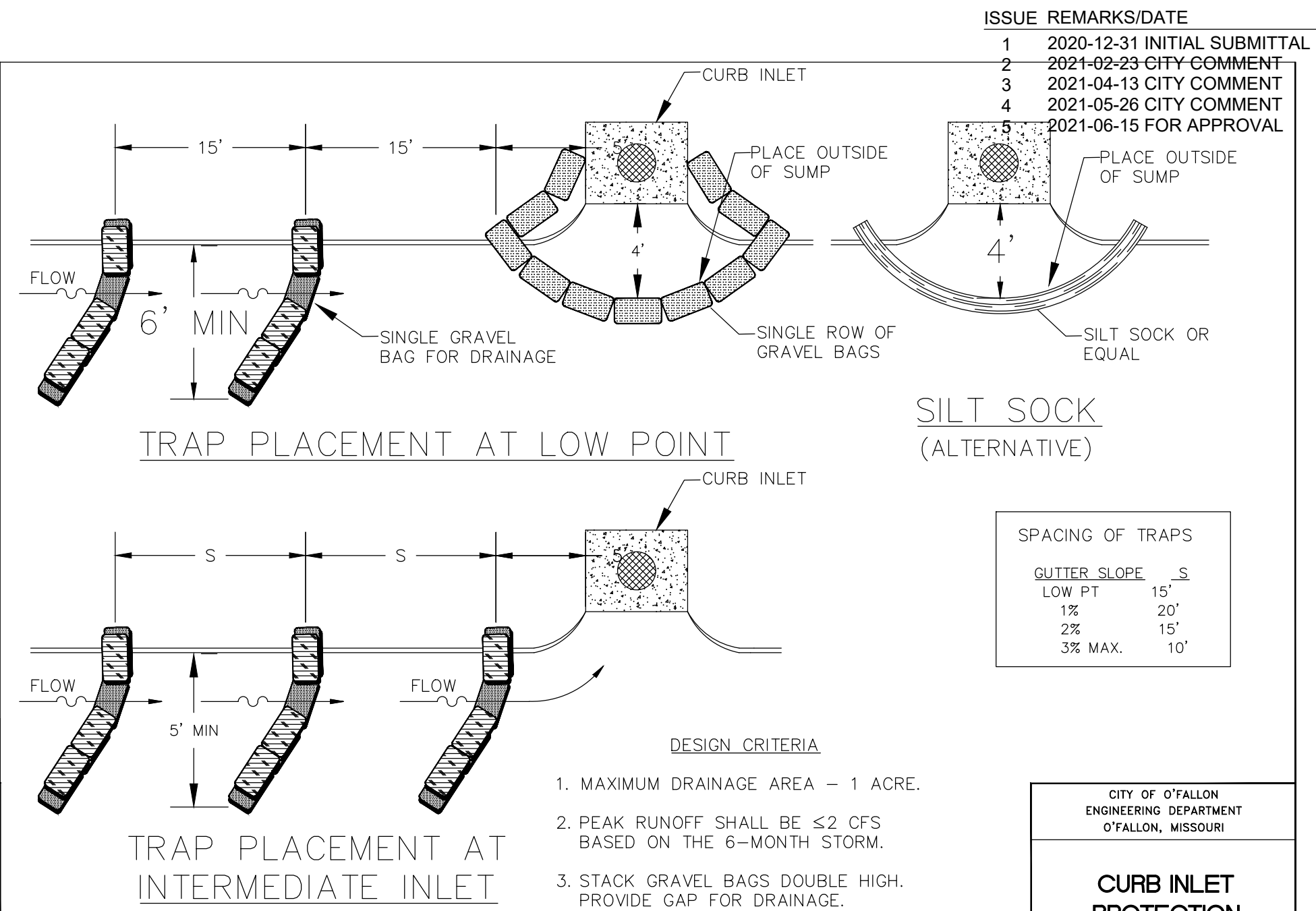
CITY OF O'FALLON
ENGINEERING DEPARTMENT
O'FALLON, MISSOURI

SPACING CHART
FOR ESC DEVICES



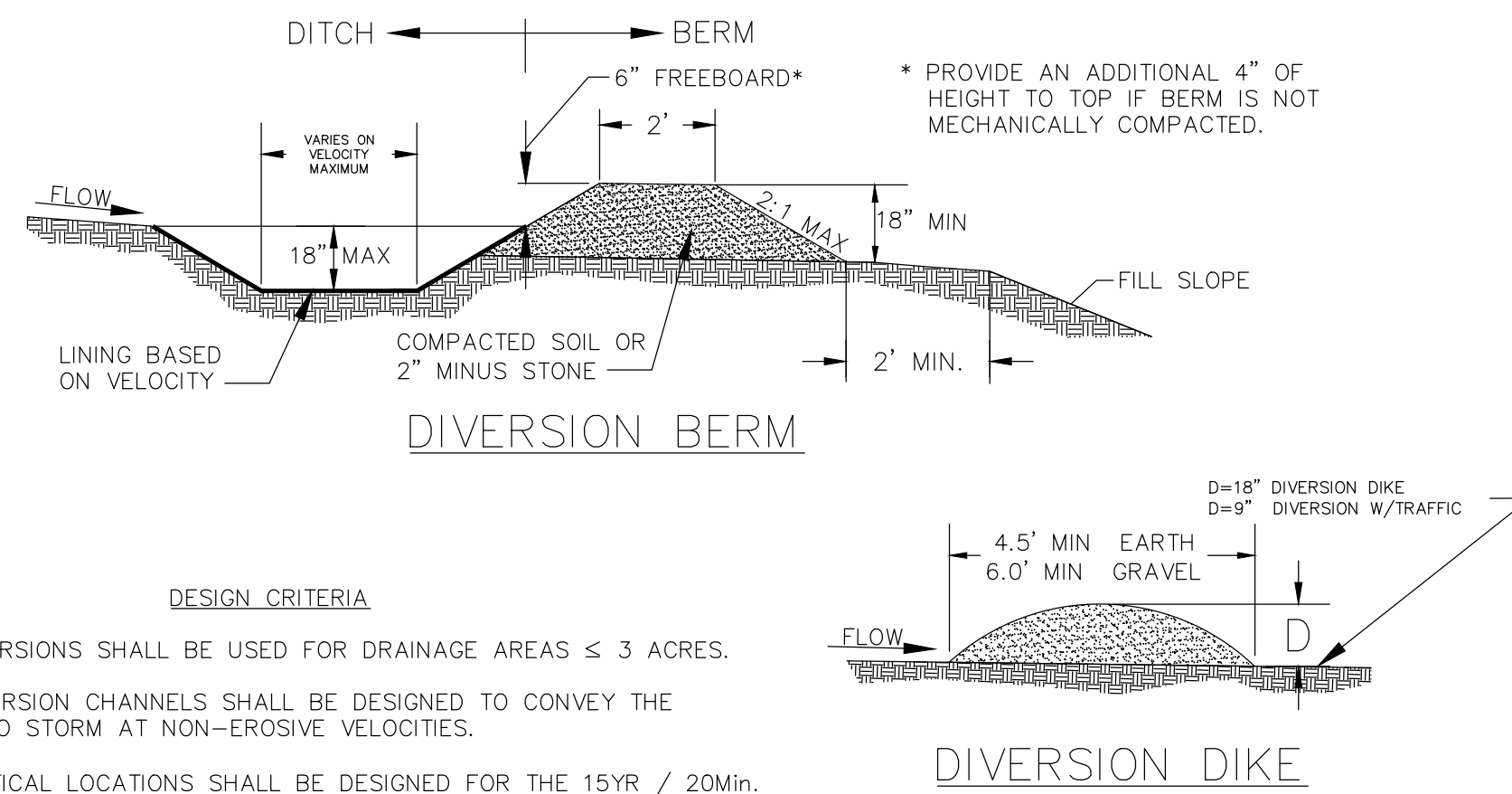
CITY OF O'FALLON
ENGINEERING DEPARTMENT
O'FALLON, MISSOURI

**SILT FENCE INSTALLATION
SHEET FLOW (ONLY)**

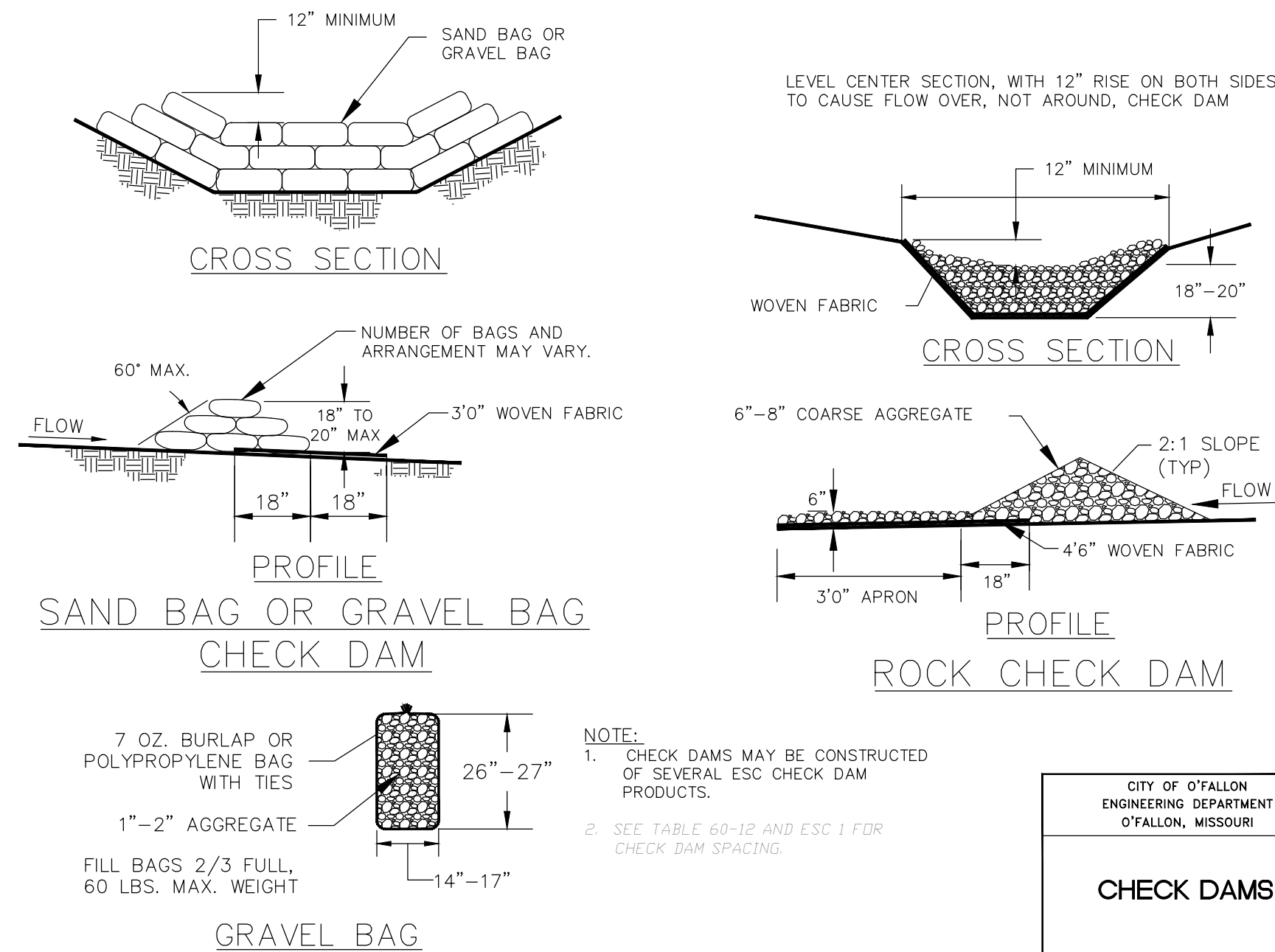


CITY OF O'FALLON
ENGINEERING DEPARTMENT
O'FALLON, MISSOURI

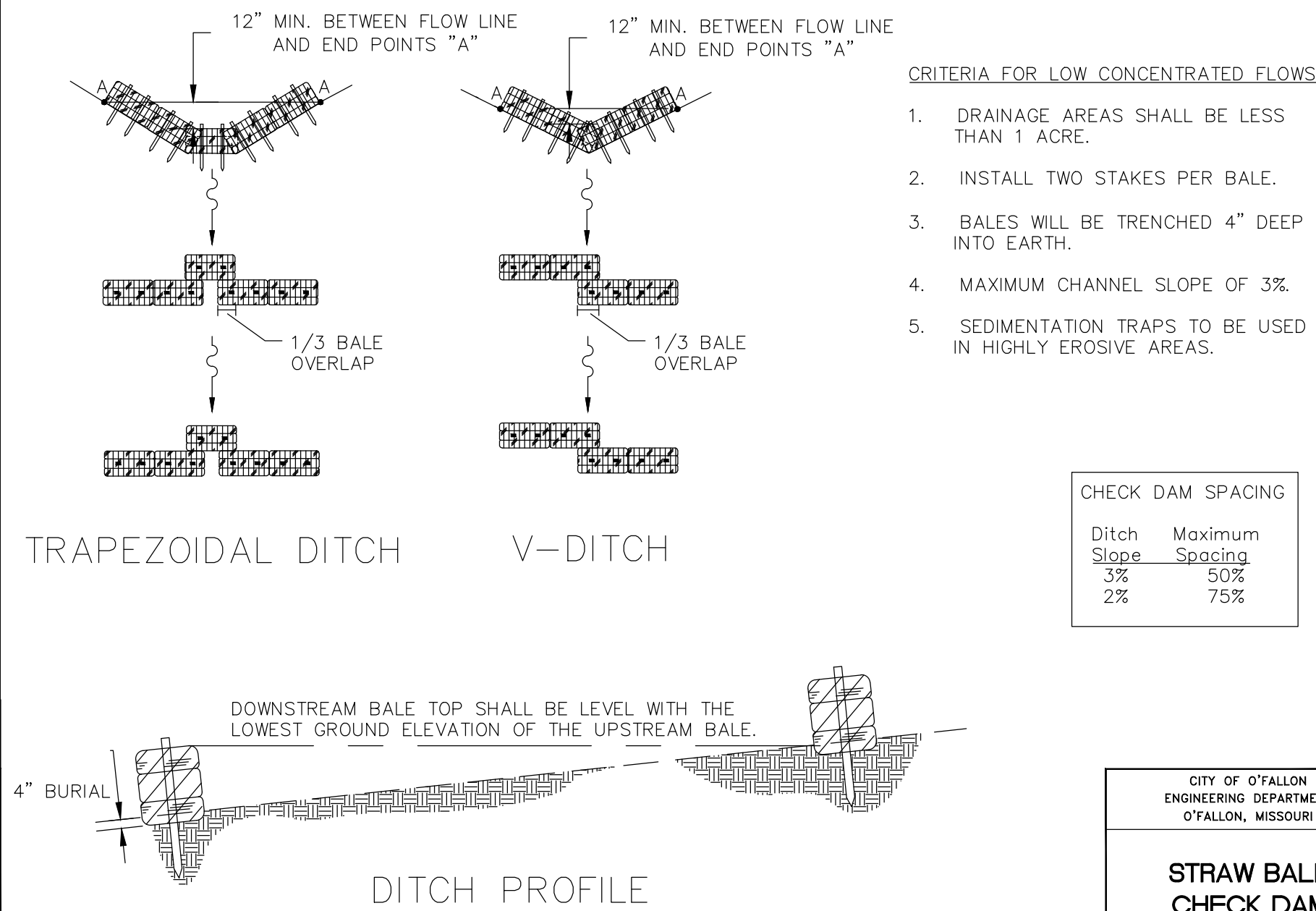
**CURB INLET
PROTECTION**



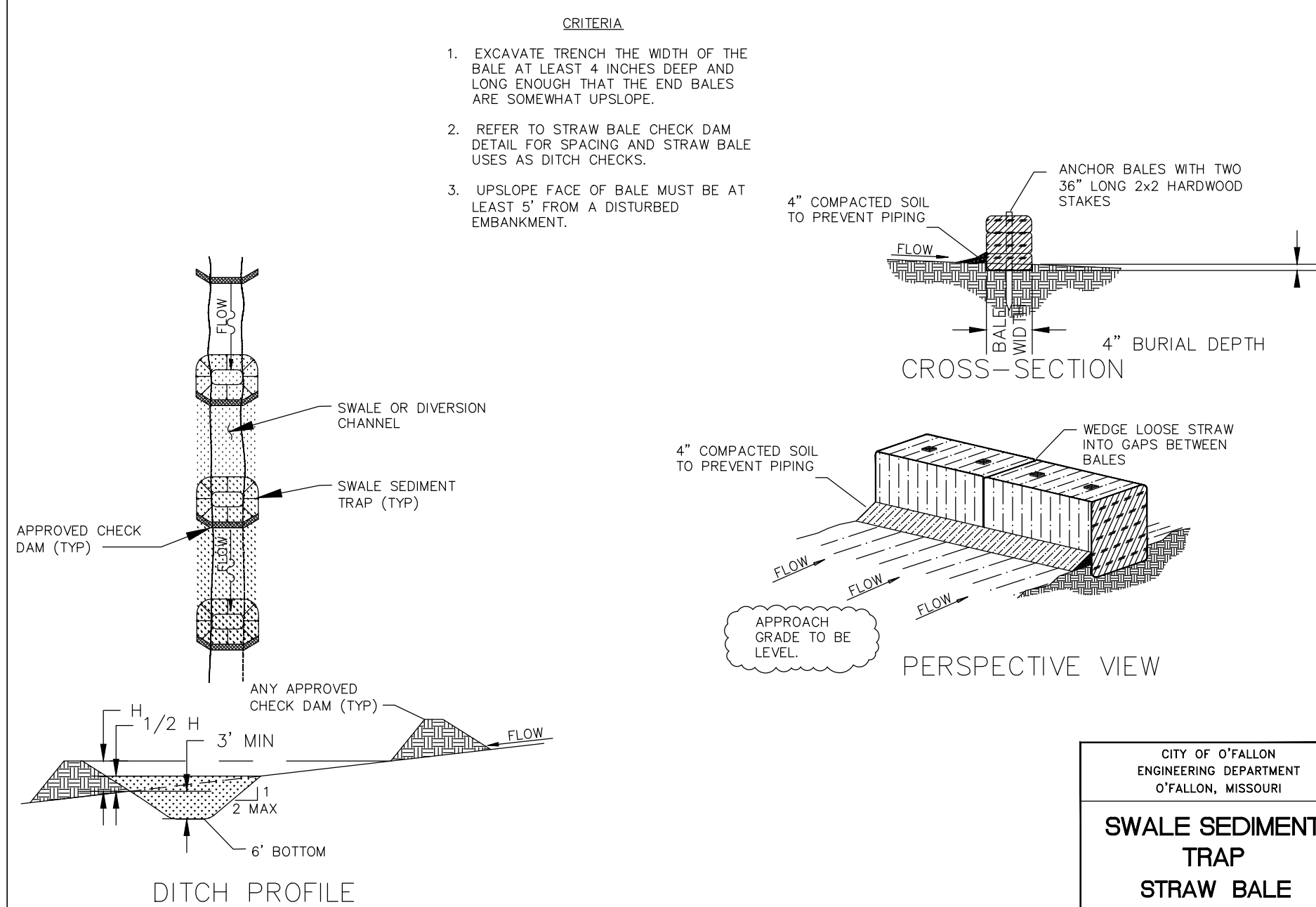
DIVERSION BERMS + DIKES



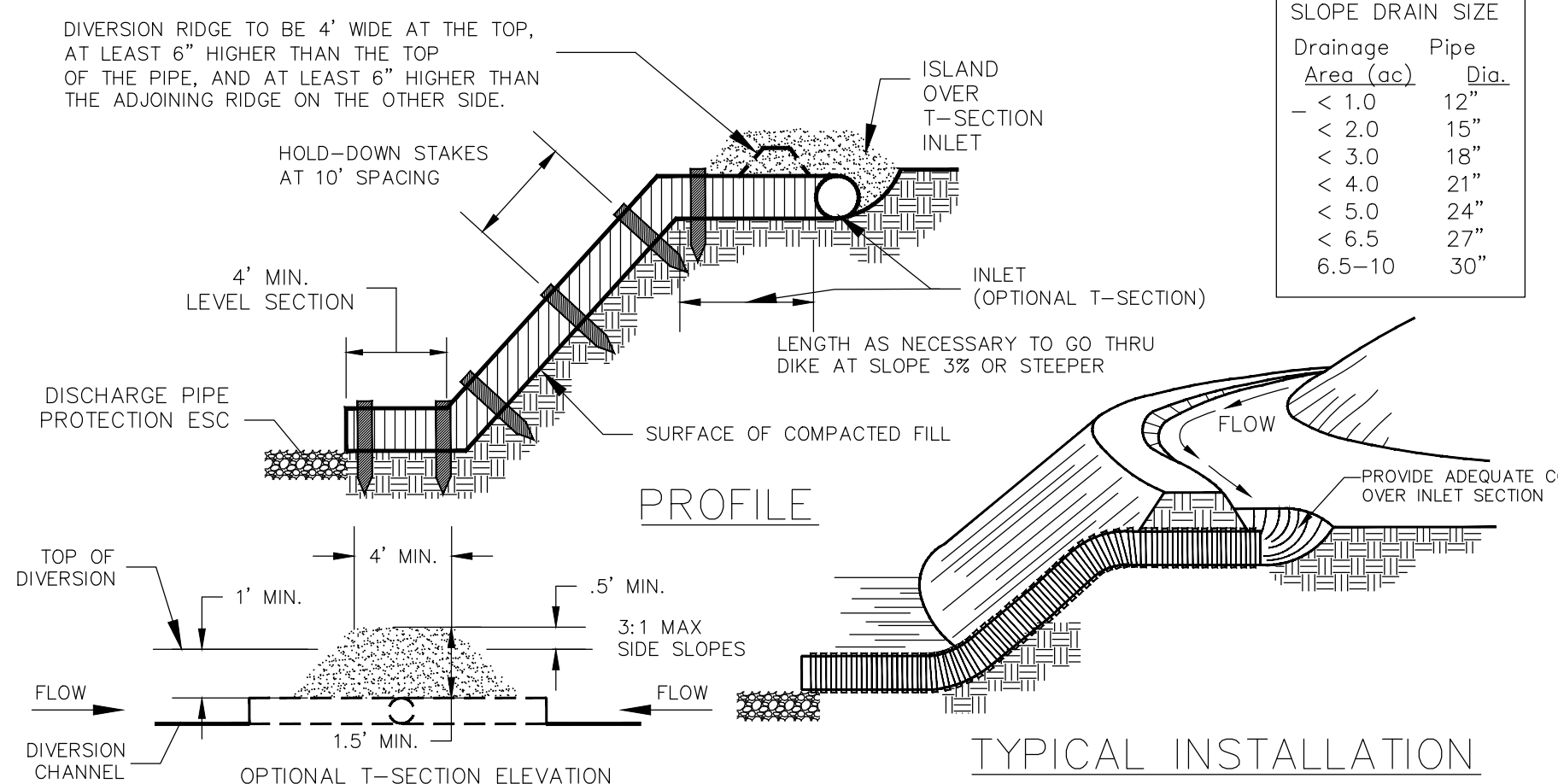
CHECK DAMS



STRAW BALE CHECK DAM



SWALE SEDIMENT
TRAP
STRAW BALE
BARRIER INSTALLATION



TEMPORARY
SLOPE DRAIN

PLAN VIEW
W/ FLARED END SECTION

PLAN VIEW - OPEN PIPE

SECTION A-A

DESIGN CRITERIA
FROUDE NUMBER MUST
BE ≤ 2.50 .

- USE 3 TIMES PIPE
DIAMETER FOR
DOWNSTREAM CHANNEL
WIDTH IF THERE IS NO
DEFINED CHANNEL.
- BANK PROTECTION HEIGHT
TO BE 2/3 TIMES PIPE
DIAMETER.
- ROCK SLOPES SHALL BE
NO STEEPER THAN 3:1.

SECTION B-B

PIPE SIZE	RIPRAP SIZE & APRON DIMENSION							
	VELOCITY < 5 FPS				VELOCITY < 10 FPS			
	ROCK SIZE	APRON DIM	ROCK SIZE	APRON DIM	ROCK SIZE	APRON DIM	ROCK SIZE	APRON DIM
	d ₅₀	d _{max}	T	L	d ₅₀	d _{max}	T	L
(inch)	(inch)	(inch)	(inch)	(ft)	(inch)	(inch)	(inch)	(ft)
12	5	9	15	12	5	9	15	16
15	5	9	15	14	5	9	15	18
18-24	5	9	15	16	9	14	24	20
27-30	5	9	15	18	9	14	24	22
36-42	9	14	24	22	12	18	27	26
48-54	9	14	24	26	12	18	27	30
60-66	12	18	27	34	15	24	30	38
72-84	15	24	30	42	15	24	30	46
96	18	27	30	50	18	27	30	54

d₅₀ = NOMINAL DIAMETER
d_{max} = MAXIMUM DIAMETER
T = THICKNESS
L = LENGTH

CITY OF O'FALLON
ENGINEERING DEPARTMENT
O'FALLON, MISSOURI

TEMPORARY OUTLET
PIPE DISCHARGE
PROTECTION

TEMPORARY OUTLET PIPE DISCHARGE PROTECTION

THE STERLING CO.
ENGINEERS & SURVEYORS
5055 New Baumgartner Road
St. Louis, Missouri 63129
Ph 314-487-0440 Fax 314-487-8944
www.sterling-eng-sur.com
Corporate Certificate of Authority #001348



Date: 06-15-2021
Michael G. Boerding, PE
License No. MO E-28643
Professional Engineer

LOMBARDO HOMES OF ST. LOUIS, LLC
2299 TECHNOLOGY DRIVE, SUITE 150
O'FALLON, MISSOURI 63368
Ph. 636-265-2710
Fax 636-695-3195

Ph. 636-265-2710
Fax 636-695-3195

P+Z No. 20-001538
City No. 20-009251
Date: JUNE 15, 2021
Job No. 19-10-344

DTL-1

IMP