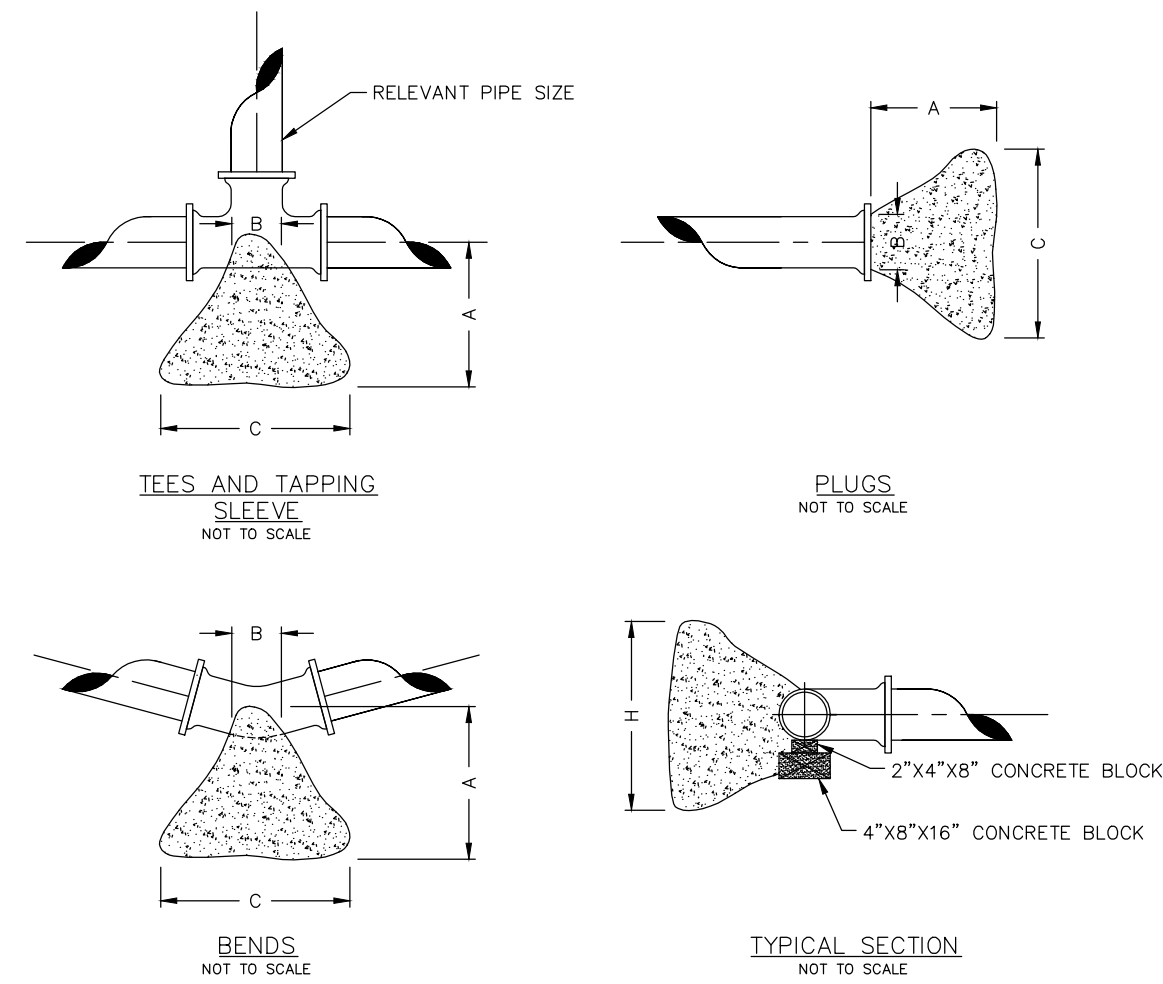


Drawing name: V:\1910344-Finlwerf Lombardo\Drawings\Engineering\Improvements\0344\IMP DETAILS.dwg Plotted on: Jun 15, 2021 - 7:57am Plotted by: jllankhaus

NOTE: THIS DETAIL IS FROM PWS#2



THRUST BLOCK DIMENSIONS - INCHES													
PIPE DIA.	ALL FTGS.		TEE PLUG TAPPING		90 DEGREE BEND		45 DEGREE BEND		22-1/2 BEND		11-1/4 BEND		
	A	B	C	H	C	H	C	H	C	H	C	H	
4	14	4	24	12	26	15	18	12	12	12	12	12	
6	16	6	36	18	36	24	30	18	24	12	12	12	
8	20	8	36	30	42	36	36	24	24	18	18	12	
10	20	10	48	36	66	36	36	36	28	24	18	18	
12	24	12	68	36	82	42	52	36	40	24	28	18	

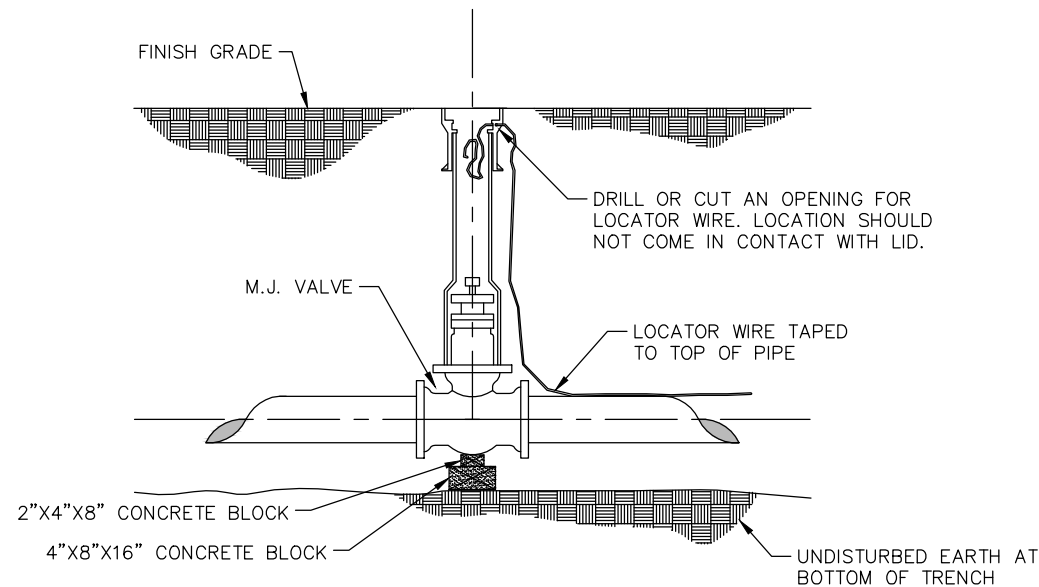
NOTE

FOR FITTINGS LARGER THAN 12", SPECIAL RESTRAINT DESIGNS ARE REQUIRED.

HORIZONTAL THRUST BLOCKING
DETAIL "C"

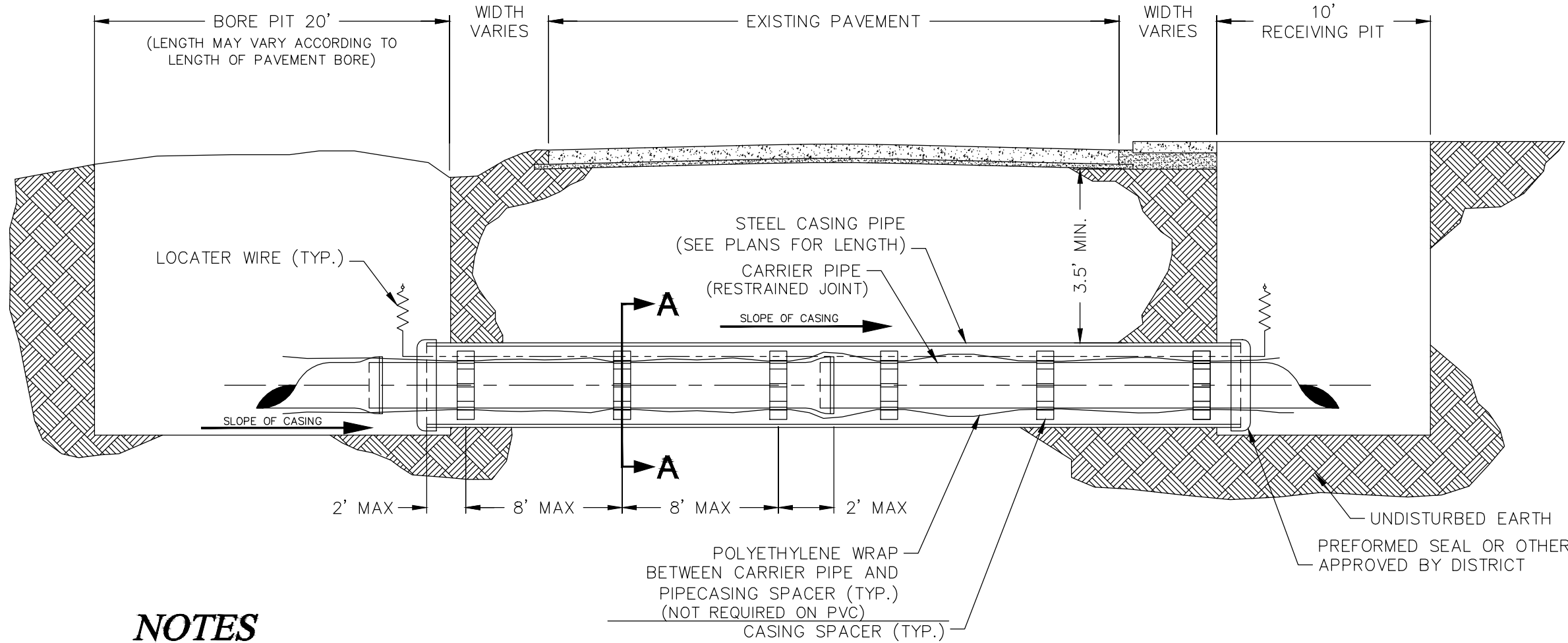
NOTE: THIS DETAIL IS FROM PWS#2

Buffalo box is an acceptable product to use.
Tyler 562-S and 564-S are acceptable products.



GATE VALVE DETAIL
DETAIL "D"

NOTE: THIS DETAIL IS FROM PWS#2



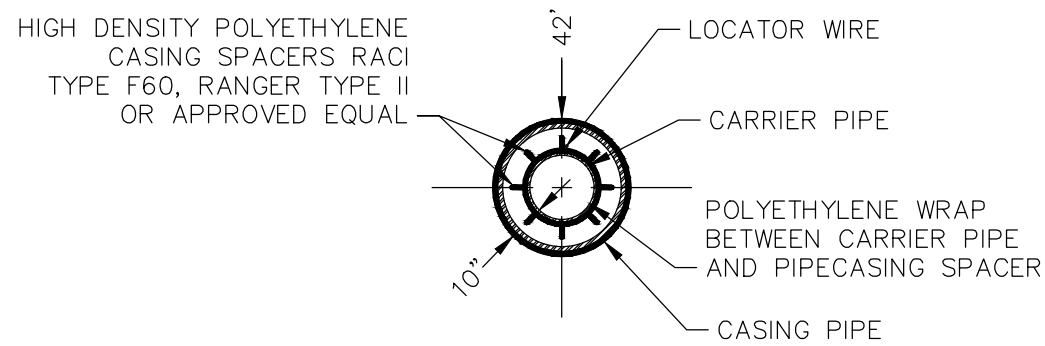
NOTES

- INSTALLATION OF THE CASING AND CARRIER PIPES SHALL MEET THE REQUIREMENTS OF PUBLIC WATER SUPPLY DISTRICT No. 2 OF ST. CHARLES COUNTY.
- CASING PIPES FOR ROAD AND HIGHWAY CROSSINGS SHALL BE WELDED STEEL PIPE WITH A MINIMUM WALL THICKNESS OF 1/4" NON-COATED AND SHALL HAVE A MINIMUM DIAMETER OF 10" LARGER THAN THE NOMINAL SIZE OF THE CARRIER PIPE.
- THE CARRIER PIPE SHALL BE RESTRAINED JOINT PIPE.

FOR SANITARY SEWER BORES, SEE THE MSD DETAIL

TYPICAL WATER BORE AND ENCASEMENT
DETAIL "H"

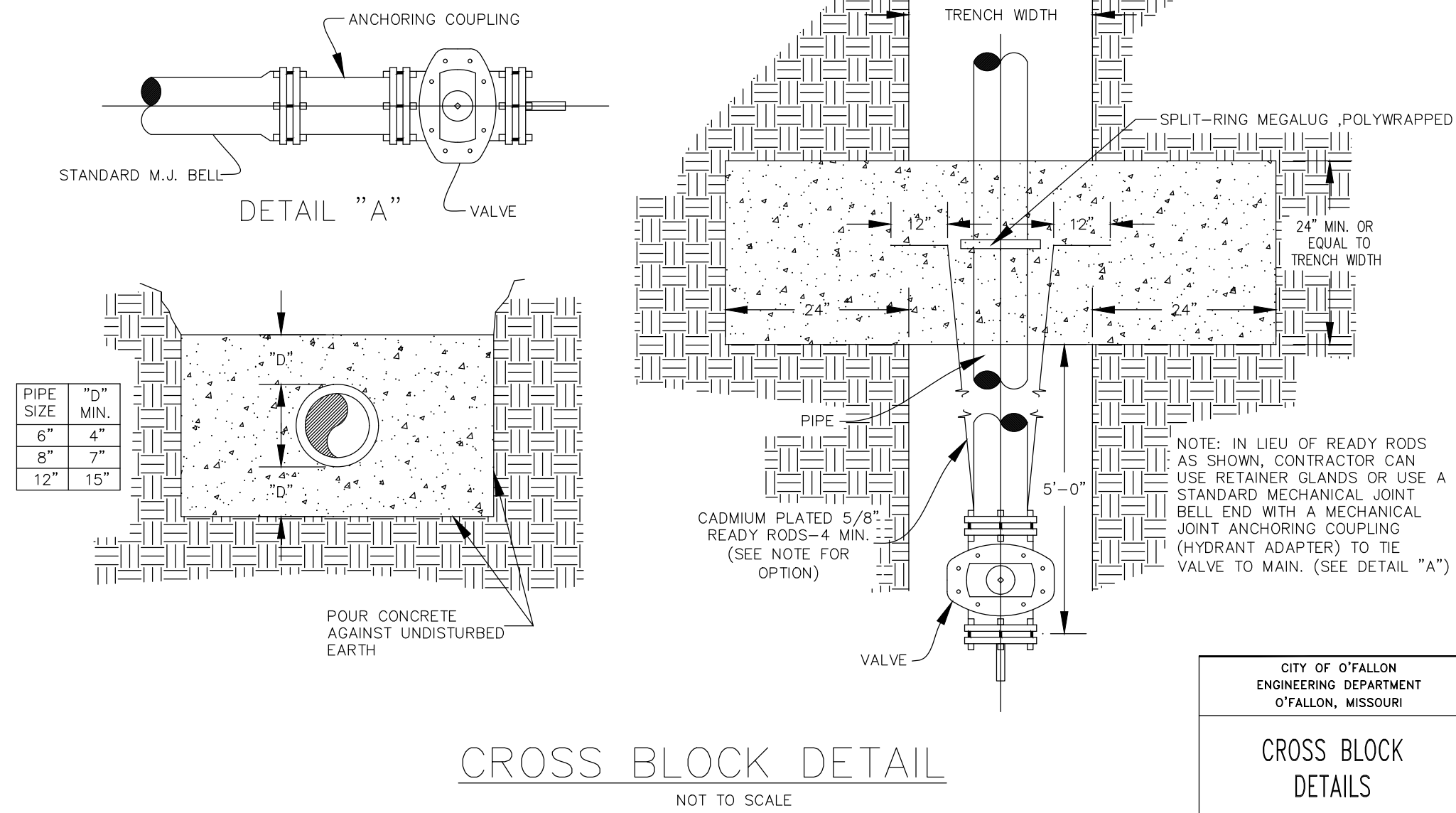
PLAN VIEW
NOT TO SCALE



SECTION A-A
NOT TO SCALE

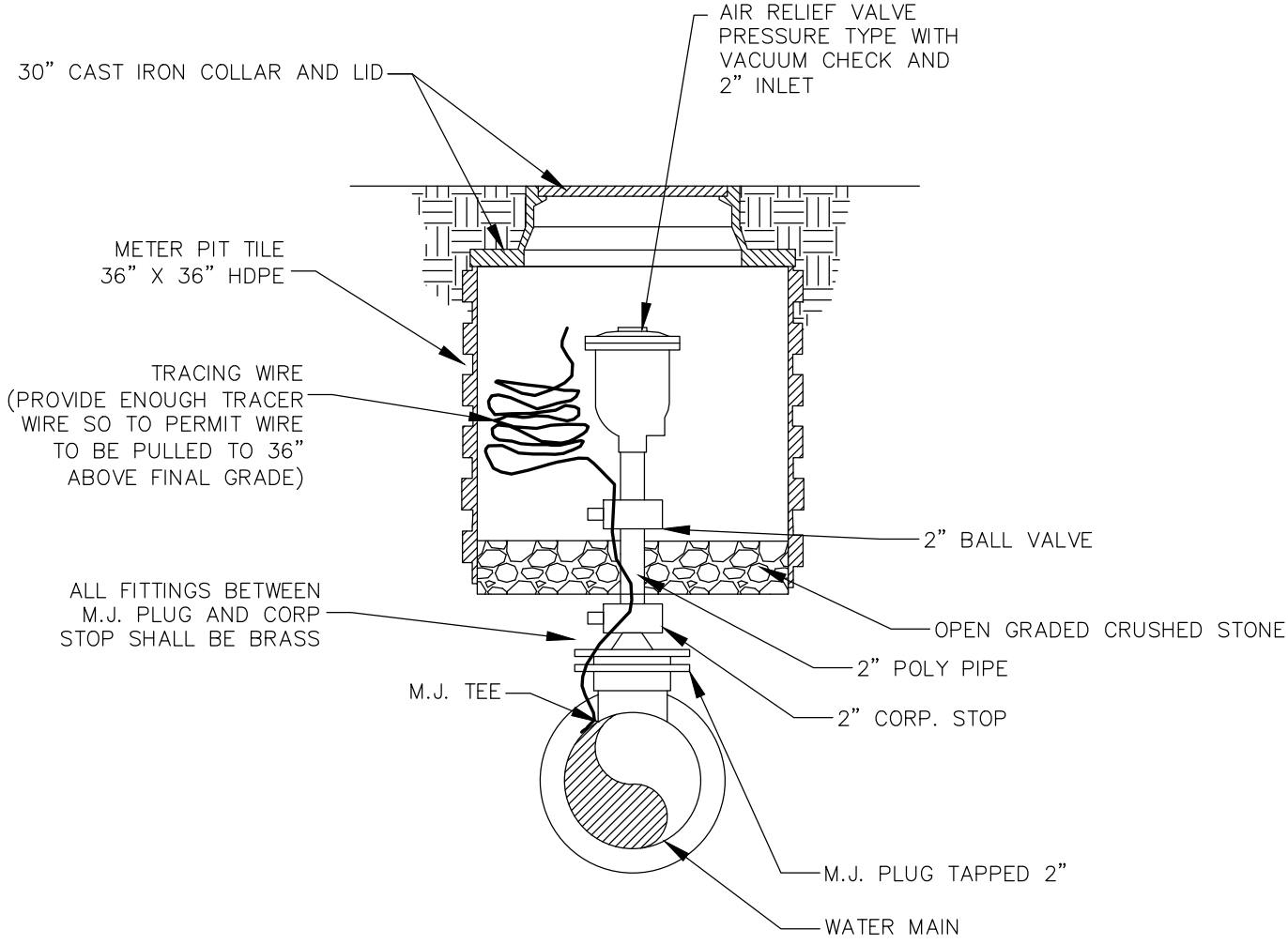
ISSUE REMARKS/DATE

- 2020-12-31 INITIAL SUBMITTAL
- 2021-02-23 CITY COMMENT
- 2021-04-13 CITY COMMENT
- 2021-05-26 CITY COMMENT
- 2021-06-15 FOR APPROVAL



CROSS BLOCK DETAIL
NOT TO SCALE

CROSS BLOCK DETAILS



AIR RELIEF ASSEMBLY
NOT TO SCALE

PROJECT TITLE

BROOKSIDE
ADDITION

O'FALLON, MISSOURI

THE **STERLING** CO.
ENGINEERS & SURVEYORS

5055 New Baumgartner Road
St. Louis, Missouri 63129
Ph 314-487-0440 Fax 314-487-8944
www.sterling-eng-sur.com
Corporate Certificate of Authority #001348

The Professional Engineer's seal and signature attest to the accuracy and reliability of the information contained herein. The Engineer shall be responsible for the accuracy and reliability of the information contained herein and shall be responsible for the accuracy and reliability of the information contained herein.



Date: 06-15-2021
Michael G. Boerding, PE
License No. MO E-28643
Professional Engineer

LOMBARDO HOMES OF ST. LOUIS, LLC
2289 TECHNOLOGY DRIVE, SUITE 150
OFALLON, MISSOURI 63368
Ph. 636-265-2710
Fax 636-695-3195

WATER DETAILS

P+Z No. 20-001538
City No. 20-009251
Date: JUNE 15, 2021
Job No. 19-10-344

Page No.

DTL-7

IMP