

BROOKSIDE

A TRACT OF LAND BEING PART OF
SECTIONS 22, 23, 26, & 27, AND PART OF
U.S. SURVEY 54, TOWNSHIP 47 NORTH, RANGE 2 EAST,
ST. CHARLES COUNTY, MISSOURI

CHANGE ORDER BKS-008

PICKETT RAY & SILVER

333 Mid Rivers Mall Drive
St. Peters, MO 63376
Phone (636) 397-1211
Fax (636) 397-1104

CIVIL ENGINEERS
PLANNERS
LAND SURVEYORS

BROOKSIDE
CHANGE ORDER BKS-008

Prepared For:
SUMMIT POINTE, LC
239 FOX HILL ROAD
PHONE: 636-946-9300

REVISIONS NO.	DATE

ENGINEERS AUTHENTICATION
The responsibility for professional engineering liability on this project is hereby limited to the set of plans authenticated by the seal, signature, and date hereunder attached. Responsibility is disclaimed for all other engineering plans involved in this project and specifically excludes revisions after this date unless reauthenticated.

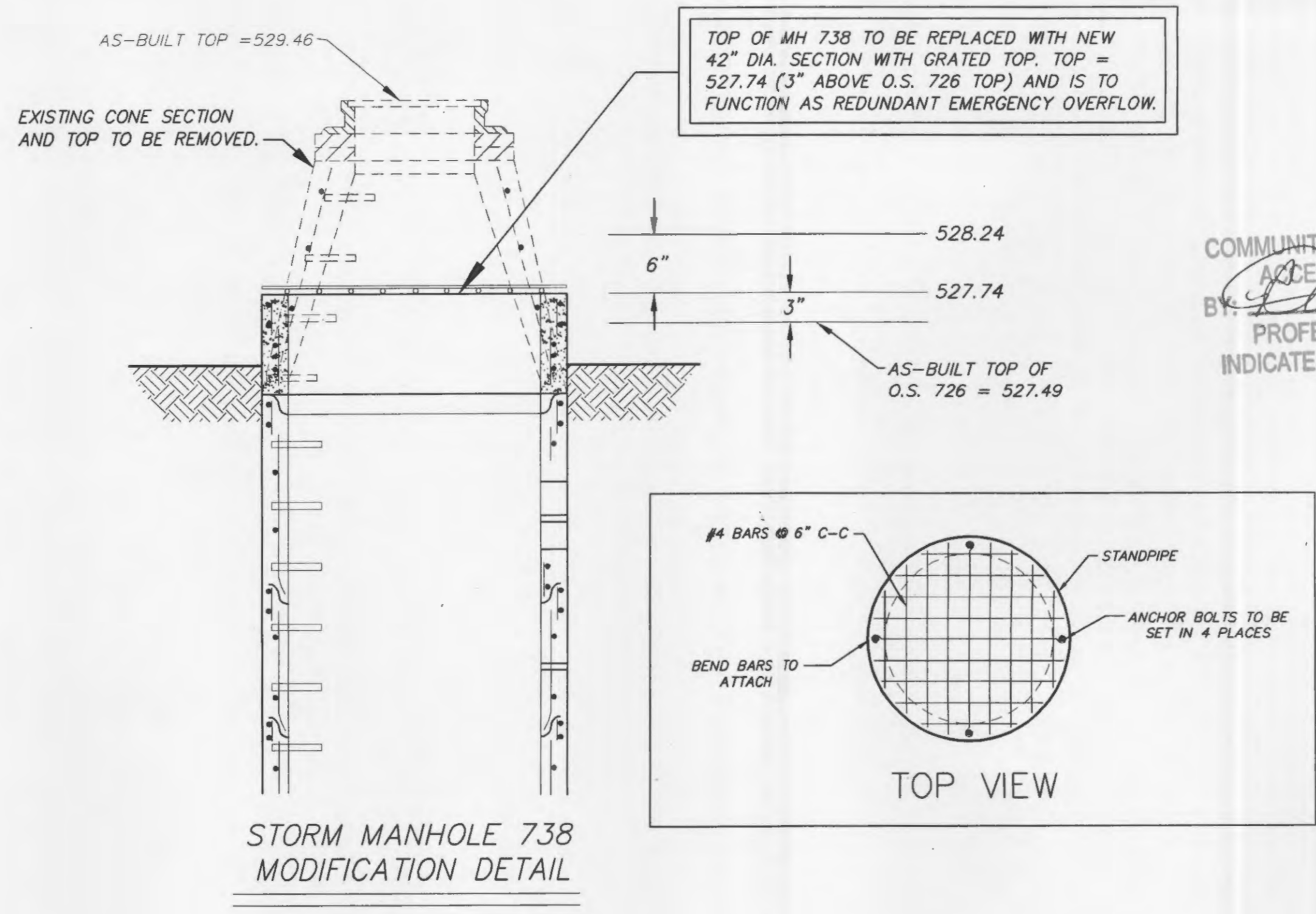
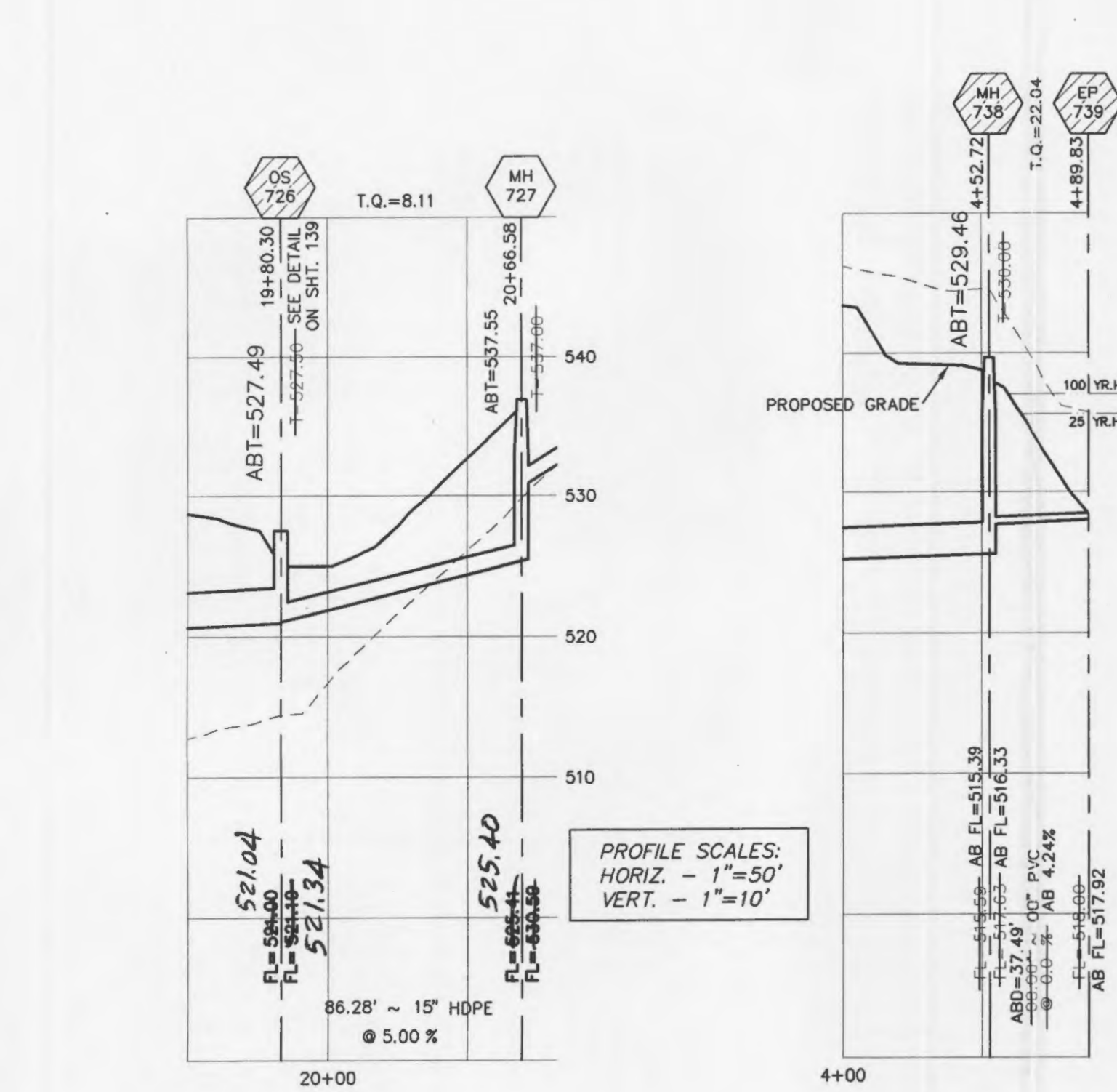
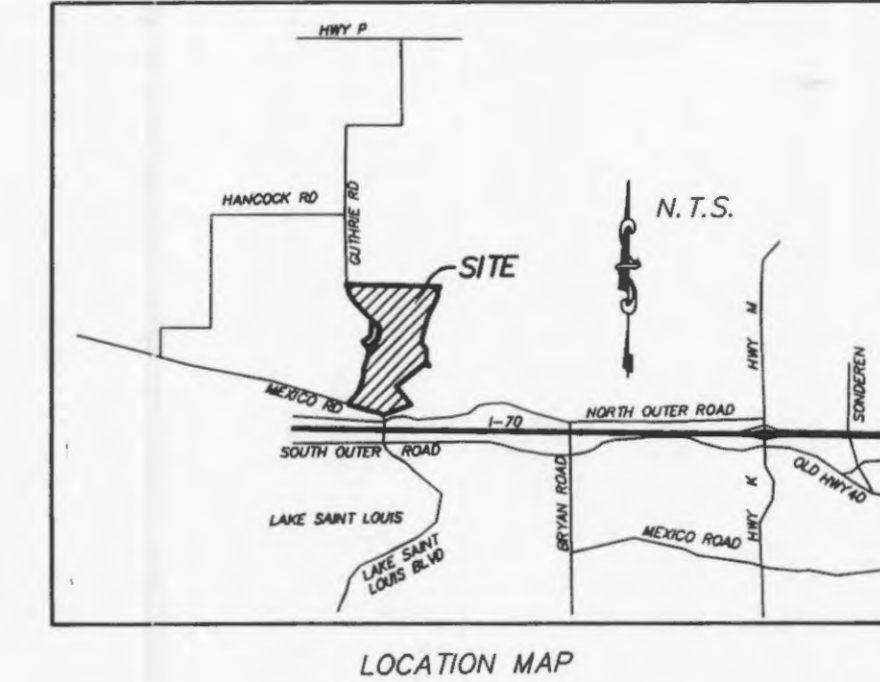
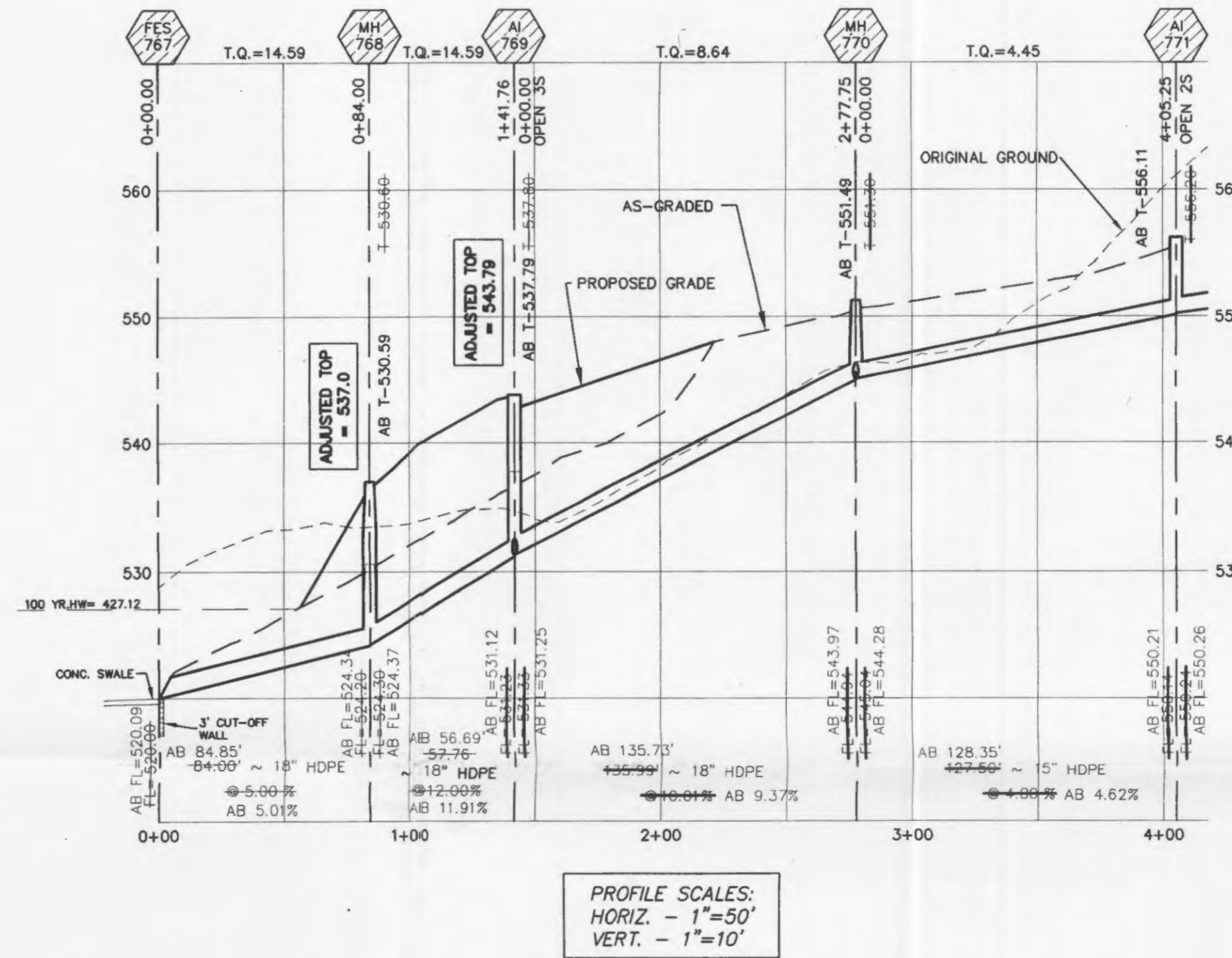
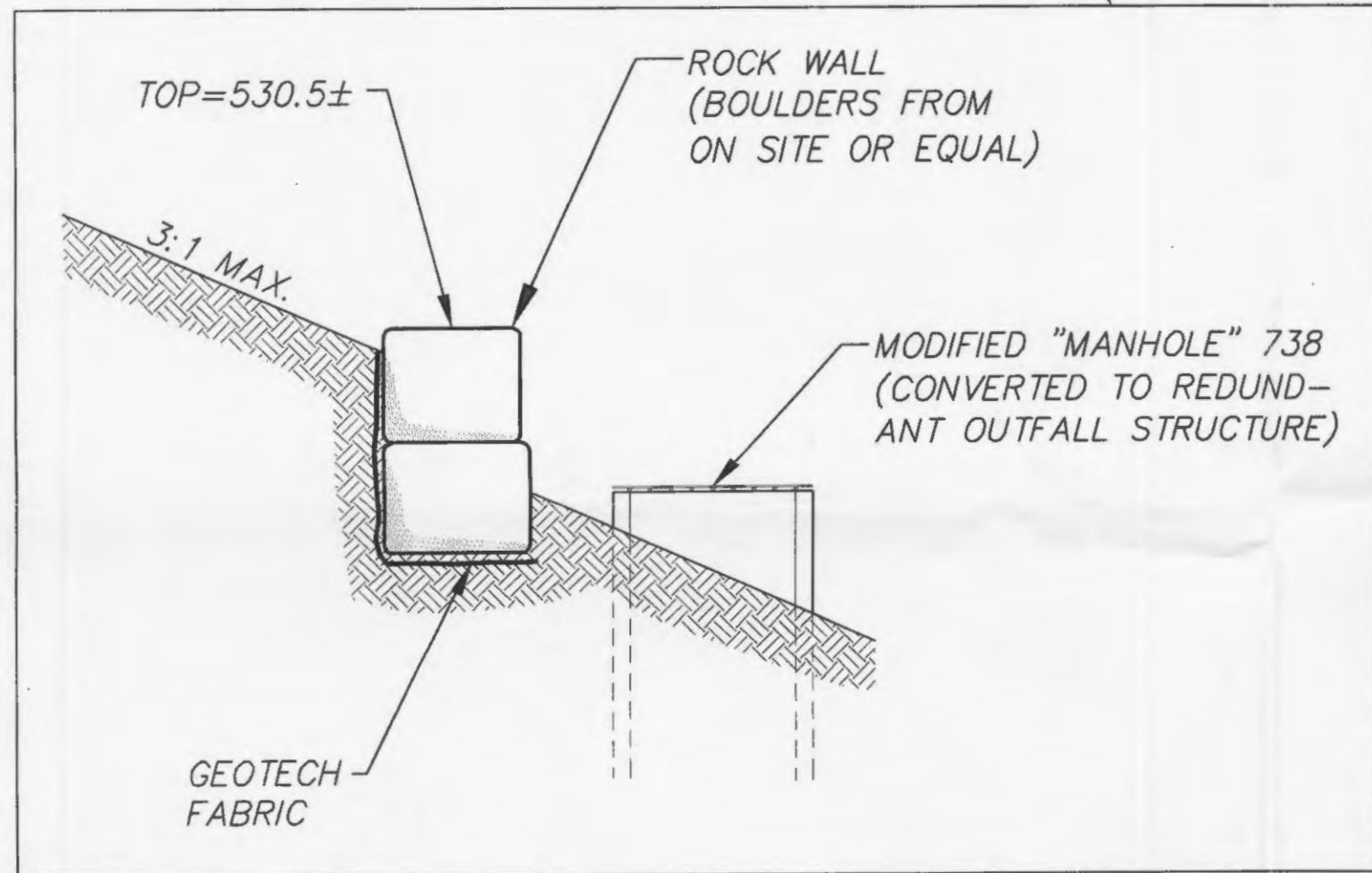
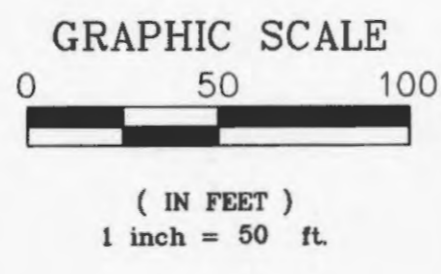
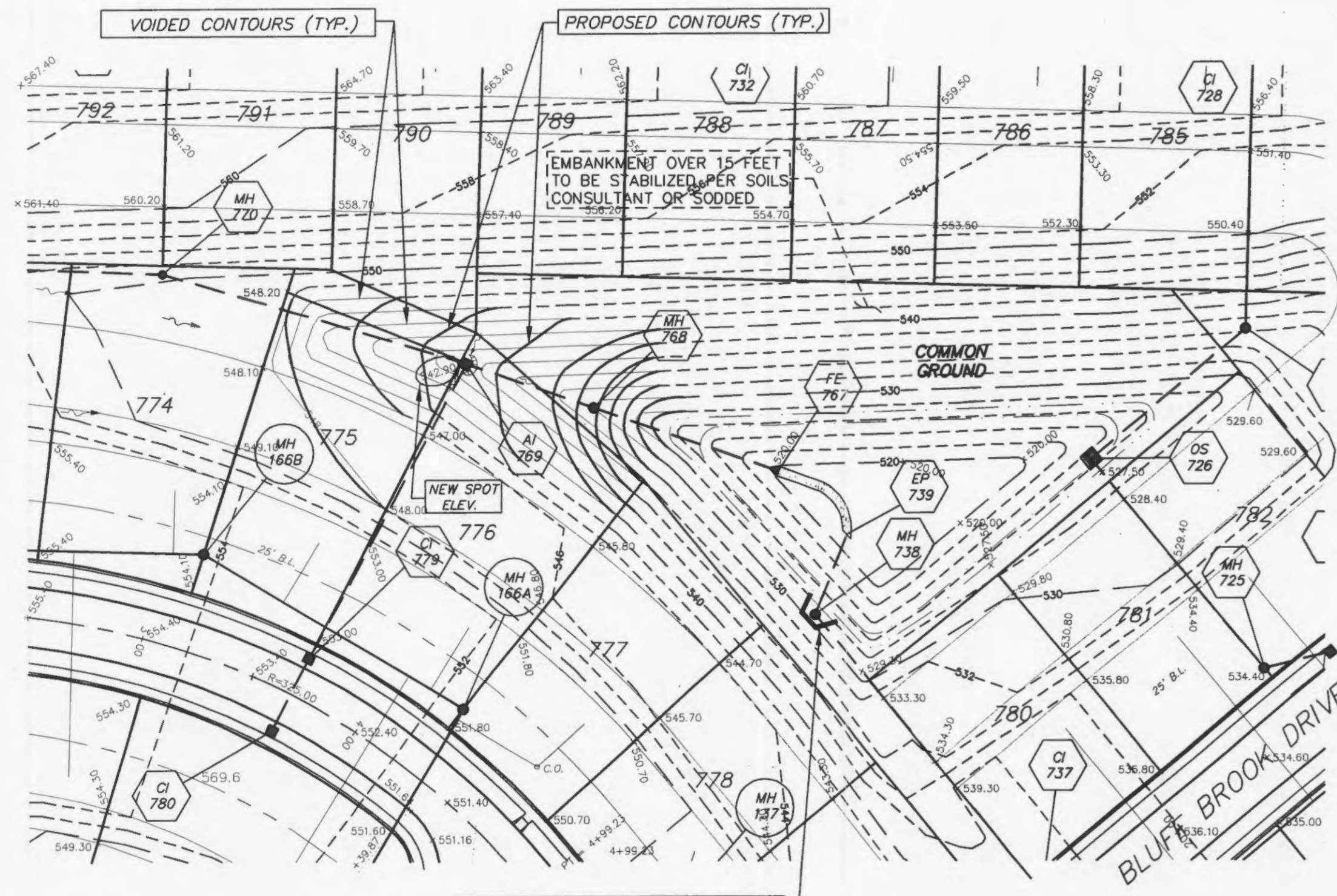


DRAWN	DWD	DATE	2/28/07
CHECKED	DWD	DATE	2/28/07
PROJECT #	03029 SUP0.01R		
TASK #	013 FIELD BOOK X		

BROOKSIDE
CHANGE ORDER BKS-008

SHEET **1** OF **1**

© Copyright 2007 by Pickett, Ray & Silver Inc.



CITY OF O'FALLON
COMMUNITY DEVELOPMENT DEPARTMENT
ACCEPTED FOR CONSTRUCTION
BY: *[Signature]* DATE: 5/3/07
PROFESSIONAL ENGINEER'S SEAL
INDICATES RESPONSIBILITY FOR DESIGN

PROJECT BENCH MARK

NGVD (same as USGS)
RM 45: Chiseled square on the southeast wingwall of the Lake Saint Louis Boulevard bridge over the spillway of Lake Saint Louis.
Elev. 526.16

SITE BENCH MARK

RM 45: Chiseled square on the southeast wingwall of the Lake Saint Louis Boulevard bridge over the spillway of Lake Saint Louis.
Elev. 526.16

RECEIVED
APR 24 2007