

# BROOKSIDE

A TRACT OF LAND BEING PART OF SECTIONS 22, 23, 26, & 27, AND PART OF U.S. SURVEY 54, TOWNSHIP 47 NORTH, RANGE 2 EAST, ST. CHARLES COUNTY, MISSOURI

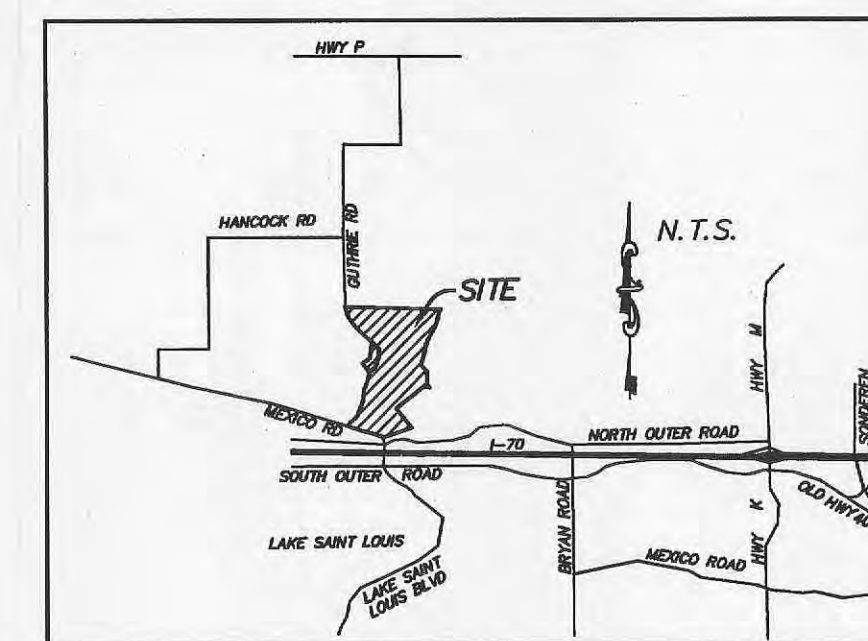
## CHANGE ORDER BKS-009 REVISE DRAINAGE ON LOT 705.

### PROJECT BENCH MARK

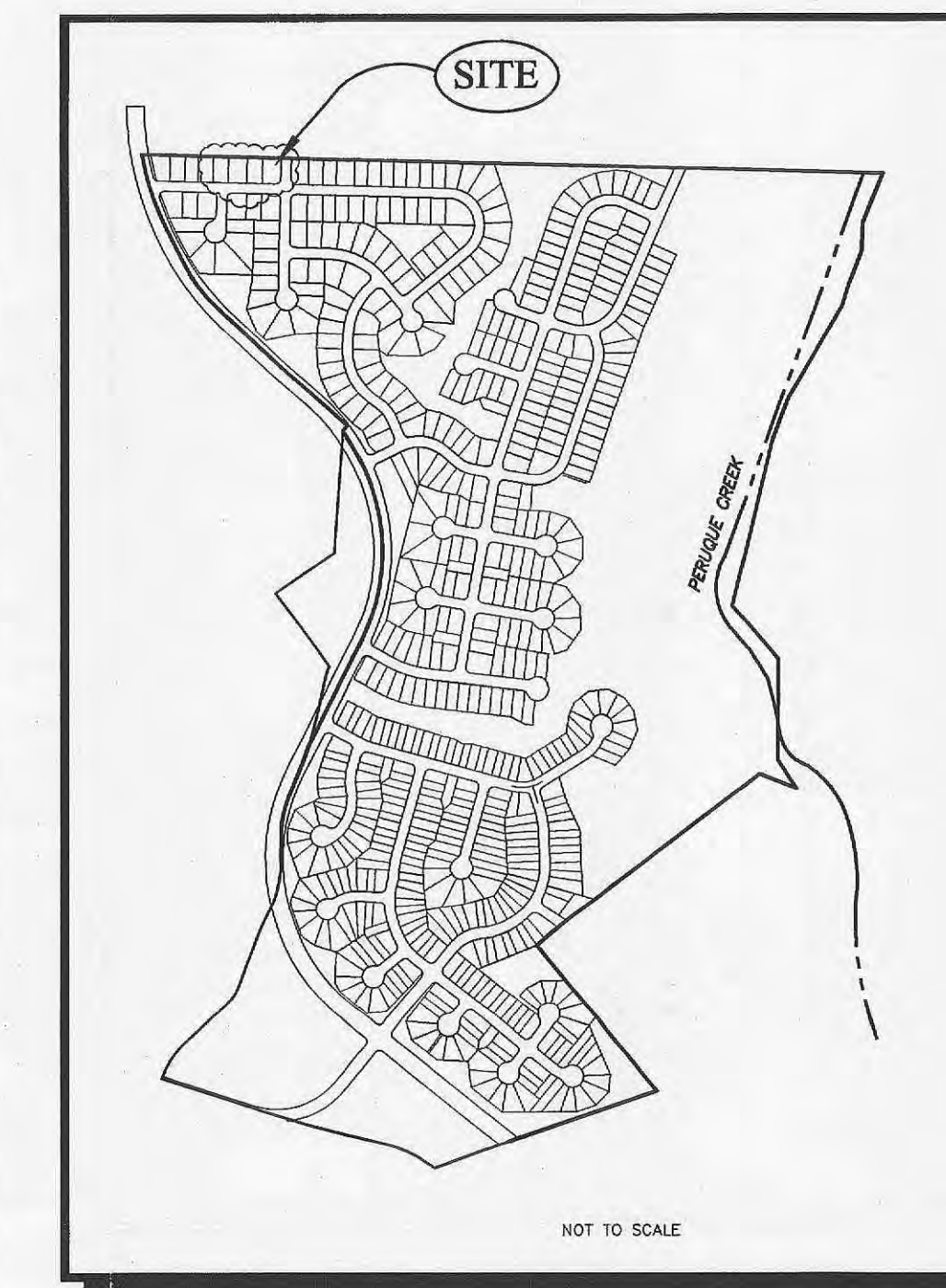
NGVD (same as USGS)  
RM 45: Chiseled square on the southeast wingwall of the Lake Saint Louis Boulevard bridge over the spillway of Lake Saint Louis.  
Elev. 526.16

### SITE BENCH MARK

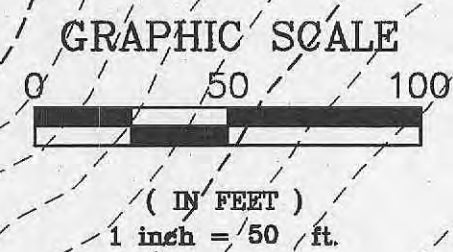
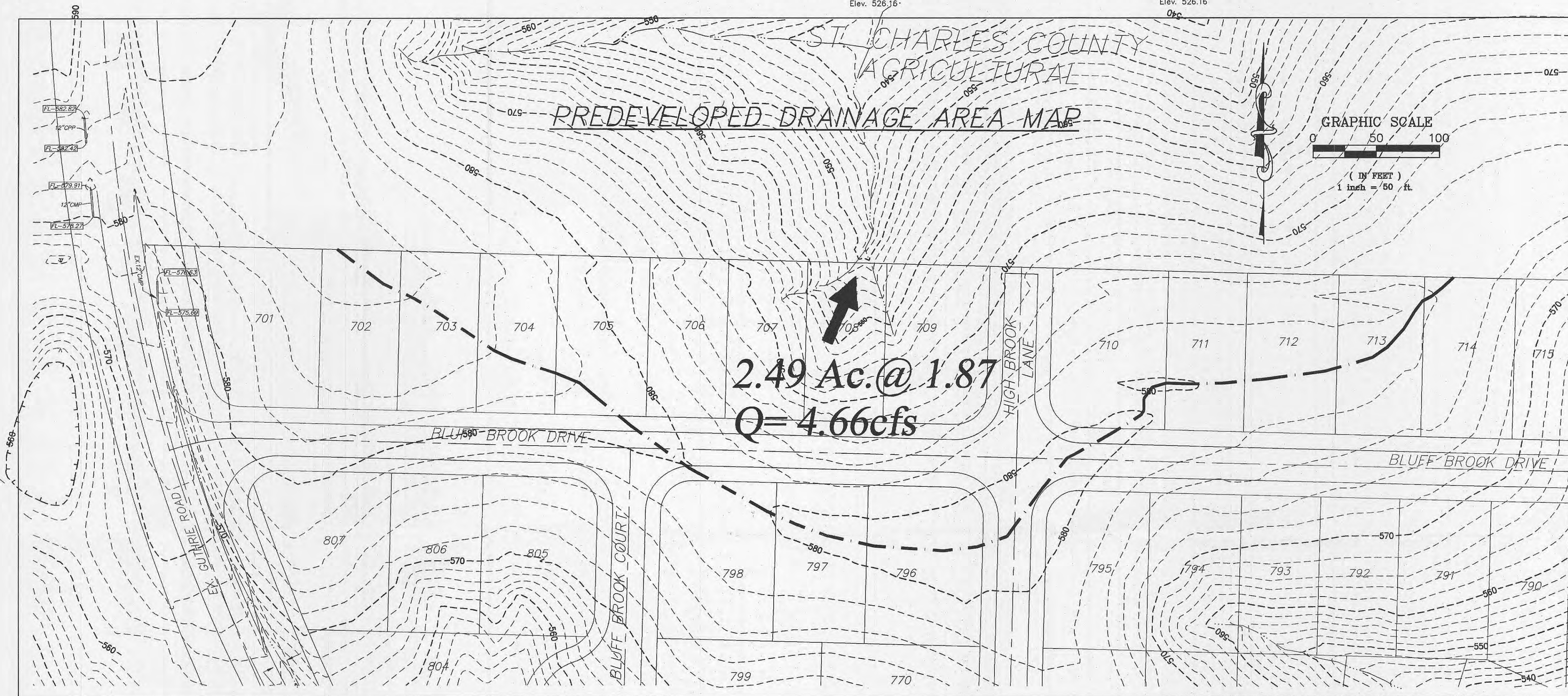
RM 45: Chiseled square on the southeast wingwall of the Lake Saint Louis Boulevard bridge over the spillway of Lake Saint Louis.  
Elev. 526.16



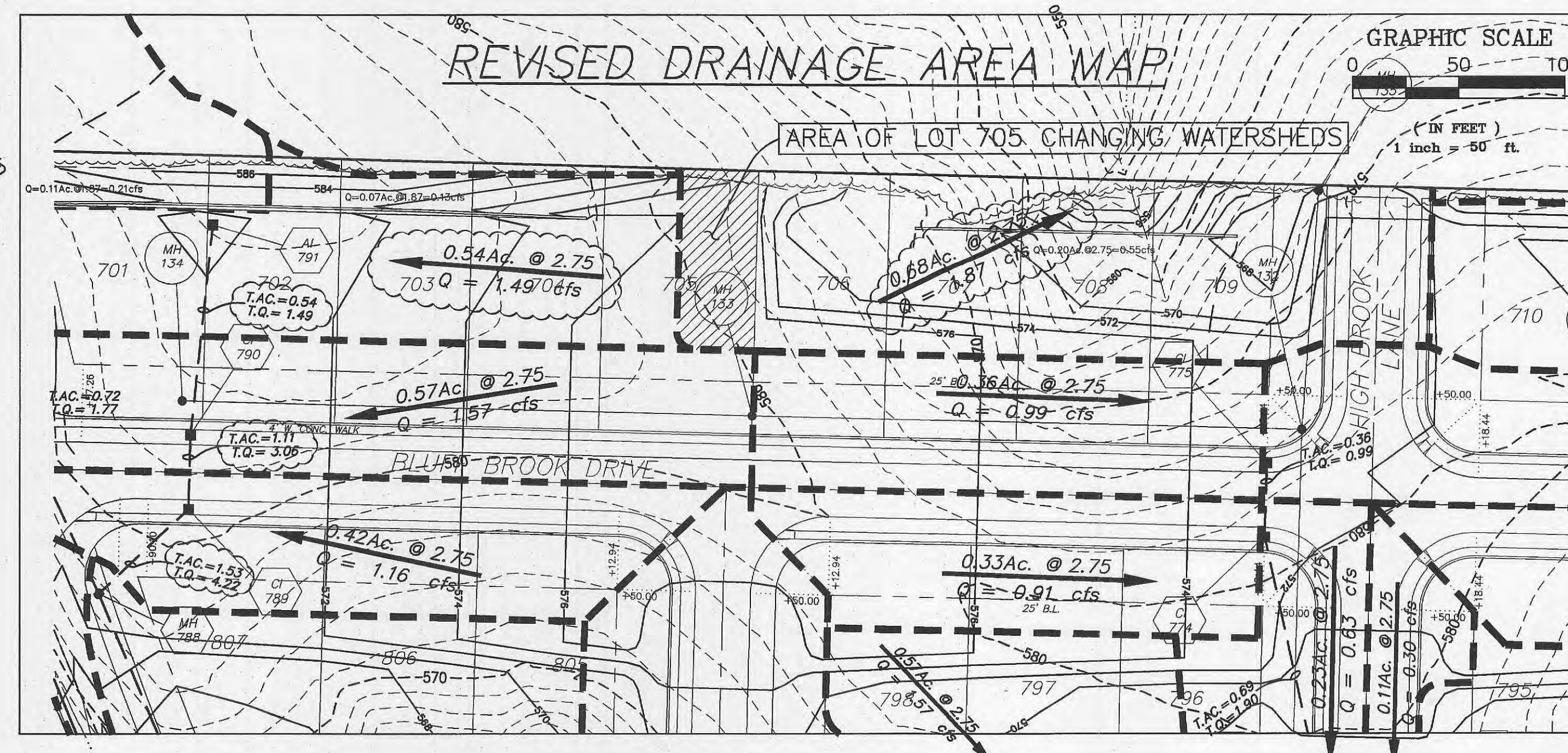
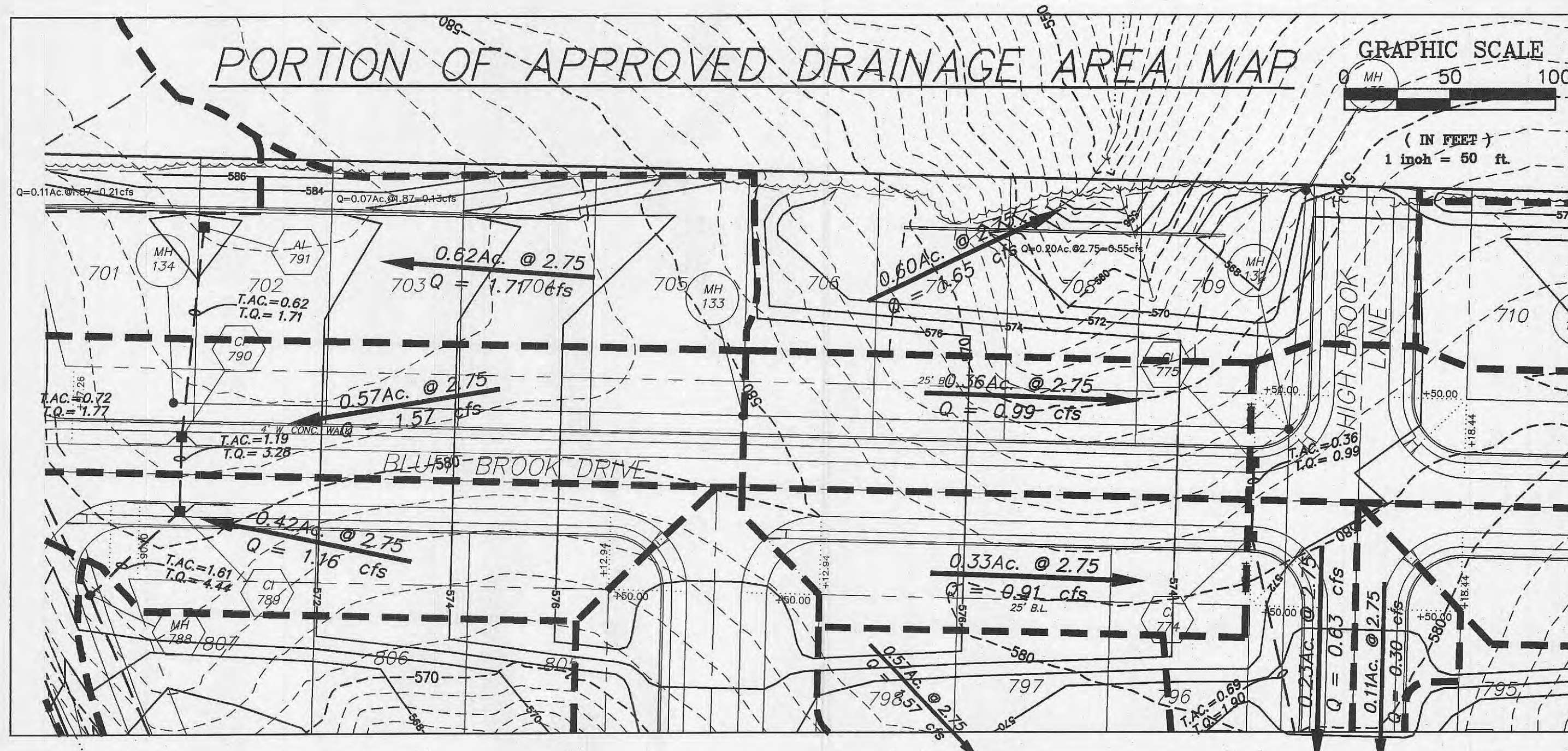
LOCATION MAP



NOT TO SCALE



CITY OF O'FALLON  
COMMUNITY DEVELOPMENT DEPARTMENT  
ACCEPTED FOR CONSTRUCTION  
BY: *[Signature]* DATE: 6/16/07  
PROFESSIONAL ENGINEER'S SEAL  
INDICATES RESPONSIBILITY FOR DESIGN



**PICKETT RAY & SILVER**  
CIVIL ENGINEERS  
PLANNERS  
LAND SURVEYORS  
333 Mid Rivers Mall Drive  
St. Peters, MO 63376  
Phone (636) 397-1211  
Fax (636) 397-1104

**BROOKSIDE**  
CHANGE ORDER BKS-009  
Prepared For:  
**SUMMIT POINTE, LC**  
299 FOX HILL ROAD  
ST. CHARLES, MO 63301  
PHONE: 636-540-9300

REVISIONS NO.	DATE

**ENGINEERS AUTHENTICATION**  
The responsibility for professional engineering liability on this project is hereby limited to the set of plans authenticated by the seal, signature, and date hereunder attached. Responsibility is disclaimed for all other engineering plans involved in this project and specifically excludes revisions after this date unless reauthenticated.  
**PICKETT RAY & SILVER, INC.**  
STATE OF MISSOURI  
**THOMAS S. TEMANN**  
REGISTERED PROFESSIONAL ENGINEER  
NUMBER: E-23349  
EXPIRES: 12/31/07

DRAWN	DWD	DATE	2/28/07
CHECKED	DWD	DATE	2/28/07
PROJECT #	03029 SUPP.01R		
TASK #	013	FIELD BOOK	X

**BROOKSIDE**  
CHANGE ORDER: BKS-009  
SHEET 1 OF 1  
© Copyright 2007 by Pickett, Ray & Silver Inc.