

THE UNDERGROUND UTILITIES SHOWN HEREON WERE PLOTTED FROM AVAILABLE INFORMATION AND DO NOT NECESSARILY REFLECT THE ACTUAL EXISTENCE, NONEXISTENCE, SIZE, TYPE, NUMBER OR LOCATION OF THESE OR OTHER UTILITIES. THE GENERAL CONTRACTOR SHALL BE RESPONSIBLE FOR VERIFYING THE ACTUAL LOCATION OF ALL UNDERGROUND UTILITIES, SHOWN OR NOT SHOWN, AND SAID UTILITIES SHALL BE LOCATED IN THE FIELD PRIOR TO ANY GRADING, EXCAVATION OR CONSTRUCTION OF IMPROVEMENTS. THESE PROVISIONS SHALL IN NO WAY ABSOLVE ANY PARTY FROM COMPLYING WITH THE UNDERGROUND FACILITY SAFETY AND DAMAGE PREVENTION ACT, CHAPTER 319, RSMo

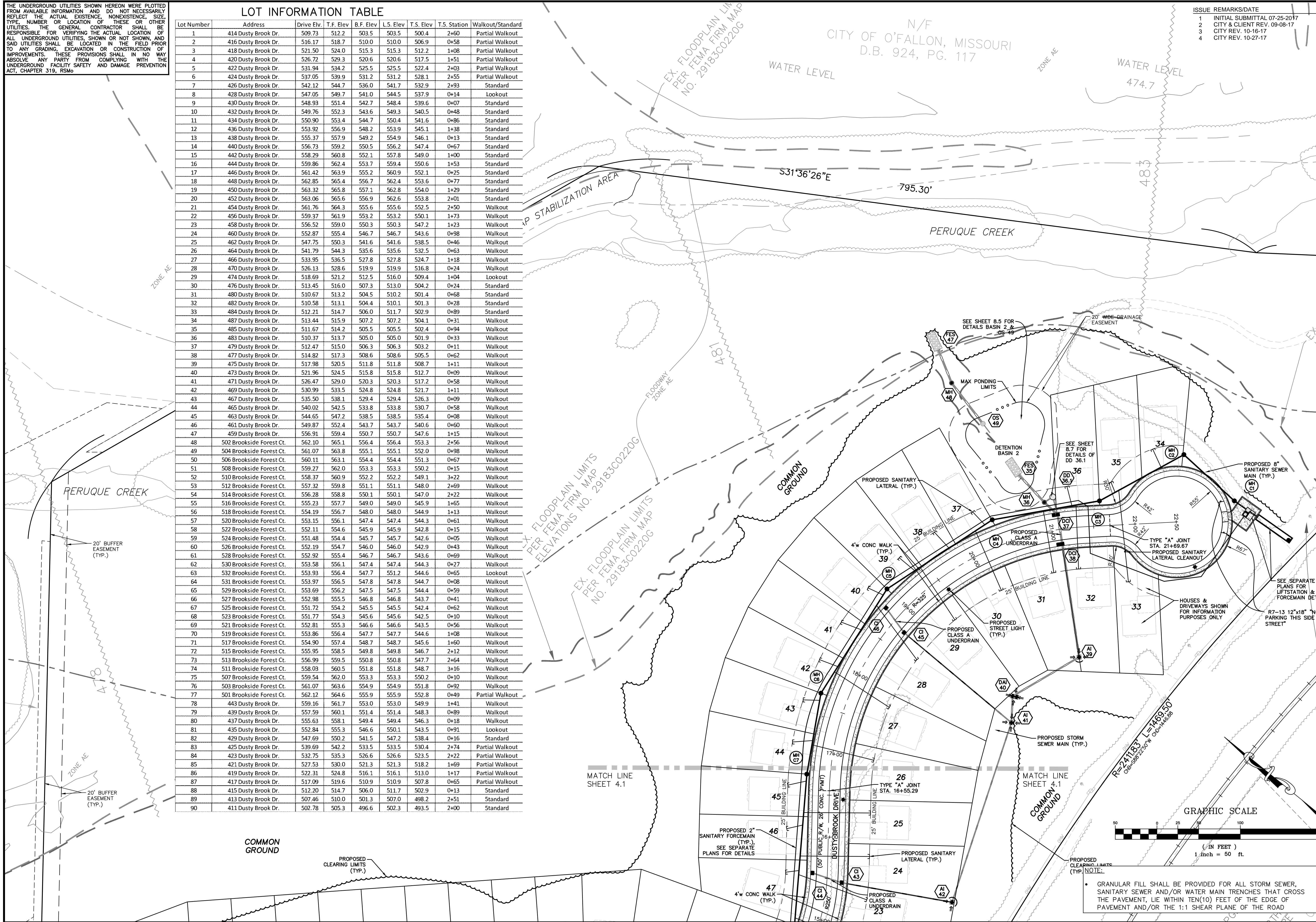
LOT INFORMATION TABLE

Lot Number	Address	Drive Elev.	T.F. Elev.	B.F. Elev.	L.S. Elev.	T.S. Elev.	T.S. Station	Walkout/Standard
1	414 Dusty Brook Dr.	509.73	512.2	503.5	503.5	500.4	2+60	Partial Walkout
2	416 Dusty Brook Dr.	516.17	518.7	510.0	510.0	506.9	0+58	Partial Walkout
3	418 Dusty Brook Dr.	521.50	524.0	515.3	515.3	512.2	1+08	Partial Walkout
4	420 Dusty Brook Dr.	526.72	529.3	520.6	520.6	517.5	1+51	Partial Walkout
5	422 Dusty Brook Dr.	531.94	534.2	525.5	525.5	522.4	2+03	Partial Walkout
6	424 Dusty Brook Dr.	537.05	539.9	531.2	531.2	528.1	2+55	Partial Walkout
7	426 Dusty Brook Dr.	542.12	544.7	536.0	536.0	532.9	2+93	Standard
8	428 Dusty Brook Dr.	547.05	549.7	541.0	544.5	537.9	0+14	Lookout
9	430 Dusty Brook Dr.	548.93	551.4	542.7	548.4	539.6	0+07	Standard
10	432 Dusty Brook Dr.	549.76	552.3	543.6	549.3	540.5	0+48	Standard
11	434 Dusty Brook Dr.	550.90	553.4	544.7	550.4	541.6	0+86	Standard
12	436 Dusty Brook Dr.	553.92	556.9	548.2	553.9	545.1	1+38	Standard
13	438 Dusty Brook Dr.	555.37	557.9	549.2	554.9	546.1	0+13	Standard
14	440 Dusty Brook Dr.	556.73	559.2	550.5	556.2	547.4	0+67	Standard
15	442 Dusty Brook Dr.	558.29	560.8	552.1	557.8	549.0	1+00	Standard
16	444 Dusty Brook Dr.	559.86	562.4	553.7	559.4	550.6	1+53	Standard
17	446 Dusty Brook Dr.	561.42	563.9	555.2	560.9	552.1	0+25	Standard
18	448 Dusty Brook Dr.	562.85	565.4	556.7	562.4	553.6	0+77	Standard
19	450 Dusty Brook Dr.	563.32	565.8	557.1	562.8	554.0	1+29	Standard
20	452 Dusty Brook Dr.	563.05	565.6	556.9	562.6	553.8	2+01	Standard
21	454 Dusty Brook Dr.	561.76	564.3	555.6	555.6	552.5	2+50	Walkout
22	456 Dusty Brook Dr.	559.37	561.9	553.2	553.2	550.1	1+73	Walkout
23	458 Dusty Brook Dr.	556.52	559.0	550.3	550.3	547.2	1+23	Walkout
24	460 Dusty Brook Dr.	552.87	555.4	546.7	546.7	543.6	0+98	Walkout
25	462 Dusty Brook Dr.	547.75	550.3	541.6	541.6	538.5	0+46	Walkout
26	464 Dusty Brook Dr.	541.79	544.3	535.6	535.6	532.5	0+63	Walkout
27	466 Dusty Brook Dr.	533.95	536.5	527.8	527.8	524.7	1+18	Walkout
28	470 Dusty Brook Dr.	526.13	528.6	519.9	519.9	516.8	0+24	Walkout
29	474 Dusty Brook Dr.	518.69	521.2	512.5	516.0	509.4	1+04	Lookout
30	476 Dusty Brook Dr.	513.45	516.0	507.3	513.0	504.2	0+24	Standard
31	480 Dusty Brook Dr.	510.67	513.2	504.5	510.2	501.4	0+68	Standard
32	482 Dusty Brook Dr.	510.58	513.1	504.4	510.1	501.3	0+28	Standard
33	484 Dusty Brook Dr.	512.21	514.7	506.0	511.7	502.9	0+89	Standard
34	487 Dusty Brook Dr.	513.44	515.9	507.2	507.2	504.1	0+31	Walkout
35	485 Dusty Brook Dr.	511.67	514.2	505.5	505.5	502.4	0+94	Walkout
36	483 Dusty Brook Dr.	510.37	513.7	505.0	505.0	501.9	0+33	Walkout
37	479 Dusty Brook Dr.	512.47	515.0	506.3	506.3	503.2	0+11	Walkout
38	477 Dusty Brook Dr.	514.82	517.3	508.6	508.6	505.5	0+62	Walkout
39	475 Dusty Brook Dr.	517.98	520.5	511.8	511.8	508.7	1+11	Walkout
40	473 Dusty Brook Dr.	521.96	524.5	515.8	515.8	512.7	0+09	Walkout
41	471 Dusty Brook Dr.	526.47	529.0	520.3	520.3	517.2	0+58	Walkout
42	469 Dusty Brook Dr.	530.99	533.5	524.8	524.8	521.7	1+11	Walkout
43	467 Dusty Brook Dr.	535.50	538.1	529.4	529.4	526.3	0+09	Walkout
44	465 Dusty Brook Dr.	540.02	542.5	533.8	533.8	530.7	0+58	Walkout
45	463 Dusty Brook Dr.	544.65	547.2	538.5	538.5	535.4	0+08	Walkout
46	461 Dusty Brook Dr.	549.87	552.4	543.7	543.7	540.6	0+60	Walkout
47	459 Dusty Brook Dr.	556.91	559.4	550.7	550.7	547.6	1+15	Walkout
48	502 Brookside Forest Ct.	562.10	565.1	556.4	556.4	553.3	2+56	Walkout
49	504 Brookside Forest Ct.	561.07	563.8	555.1	555.1	552.0	0+98	Walkout
50	506 Brookside Forest Ct.	560.11	563.1	554.4	554.4	551.3	0+67	Walkout
51	508 Brookside Forest Ct.	559.27	562.0	553.3	553.3	550.2	0+15	Walkout
52	510 Brookside Forest Ct.	558.37	560.9	552.2	552.2	549.1	3+22	Walkout
53	512 Brookside Forest Ct.	557.32	559.8	551.1	551.1	548.0	2+69	Walkout
54	514 Brookside Forest Ct.	556.28	558.8	550.1	550.1	547.0	2+22	Walkout
55	516 Brookside Forest Ct.	555.23	557.7	549.0	549.0	545.9	1+65	Walkout
56	518 Brookside Forest Ct.	554.19	556.7	548.0	548.0	544.9	1+13	Walkout
57	520 Brookside Forest Ct.	553.15	556.1	547.4	547.4	544.3	0+61	Walkout
58	522 Brookside Forest Ct.	552.11	554.6	545.9	545.9	542.8	0+15	Walkout
59	524 Brookside Forest Ct.	551.48	554.4	545.7	545.7	542.6	0+05	Walkout
60	526 Brookside Forest Ct.	552.19	554.7	546.0	546.0	542.9	0+43	Walkout
61	528 Brookside Forest Ct.	552.92	555.4	546.7	546.7	543.6	0+69	Walkout
62	530 Brookside Forest Ct.	553.58	556.1	547.4	547.4	544.3	0+27	Walkout
63	532 Brookside Forest Ct.	553.93	556.4	547.7	551.2	544.6	0+65	Lookout
64	531 Brookside Forest Ct.	553.97	556.5	547.8	547.8	544.7	0+08	Walkout
65	529 Brookside Forest Ct.	553.69	556.2	547.5	547.5	544.4	0+59	Walkout
66	527 Brookside Forest Ct.	552.98	555.5	546.8	546.8	543.7	0+41	Walkout
67	525 Brookside Forest Ct.	551.72	554.2	545.5	545.5	542.4	0+62	Walkout
68	523 Brookside Forest Ct.	551.77	554.3	545.6	545.6	542.5	0+10	Walkout
69	521 Brookside Forest Ct.	552.81	555.3	546.6	546.6	543.5	0+56	Walkout
70	519 Brookside Forest Ct.	553.86	556.4	547.7	547.7	544.6	1+08	Walkout
71	517 Brookside Forest Ct.	554.90	557.4	548.7	548.7	545.6	1+60	Walkout
72	515 Brookside Forest Ct.	555.95	558.5	549.8	549.8	546.7	2+12	Walkout
73	513 Brookside Forest Ct.	556.99	559.5	550.8	550.8	547.7	2+64	Walkout
74	511 Brookside Forest Ct.	558.03	560.5	551.8	551.8	548.7	3+16	Walkout
75	507 Brookside Forest Ct.	559.54	562.0	553.3	553.3	550.2	0+10	Walkout
76	503 Brookside Forest Ct.	561.07	563.6	554.9	554.9	551.8	0+92	Walkout
77	501 Brookside Forest Ct.	562.12	564.6	555.9	555.9	552.8	0+49	Partial Walkout
78	443 Dusty Brook Dr.	559.16	561.7	553.0	553.0	549.9	1+41	Walkout
79	439 Dusty Brook Dr.	557.59	560.1	551.4	551.4	548.3	0+89	Walkout
80	437 Dusty Brook Dr.	555.63	558.1	549.4	549.4	546.3	0+18	Walkout
81	435 Dusty Brook Dr.	552.84	555.3	546.6	550.1	543.5	0+91	Lookout
82	429 Dusty Brook Dr.	547.69	550.2	541.5	547.2	538.4	0+16	Standard
83	425 Dusty Brook Dr.	539.69	542.2	533.5	533.5	530.4	2+74	Partial Walkout
84	423 Dusty Brook Dr.	532.75	535.3	526.6	526.6	523.5	2+22	Partial Walkout
85	421 Dusty Brook Dr.	527.53	530.0	521.3	521.3	518.2	1+69	Partial Walkout
86	419 Dusty Brook Dr.	522.31	524.8	516.1	516.1	513.0	1+17	Partial Walkout
87	417 Dusty Brook Dr.	517.09	519.6	510.9	510.9	507.8	0+65	Partial Walkout
88	415 Dusty Brook Dr.	512.20	514.7	506.0	511.7	502.9	0+13	Standard
89	413 Dusty Brook Dr.	507.46	510.0	501.3	507.0	498.2	2+51	Standard
90	411 Dusty Brook Dr.	502.78	505.3	496.6	502.3	493.5	2+00	Standard

ISSUE REMARKS/DATE

- 1 INITIAL SUBMITTAL 07-25-2017
- 2 CITY & CLIENT REV. 09-08-17
- 3 CITY REV. 10-16-17
- 4 CITY REV. 10-27-17

N/F
CITY OF O'FALLON, MISSOURI
D.B. 924, PG. 117



PROJECT TITLE
BROOKSIDE FOREST
O'FALLON, MISSOURI

THE **STERLING** CO.
ENGINEERS & SURVEYORS
5065 New Baumgartner Road
St. Louis, Missouri 63129
Ph 314-487-0440 Fax 314-487-8944
www.sterling-eng-sur.com
Corporate Certificate of Authority #001348

Date: 11-7-17
Jason D Howell
License No. PE 2007002801
Civil Engineer

Brookside Forest, LLC
16091 SWINGLEY RIDGE ROAD, SUITE 300
CHESTERFIELD, MISSOURI 63017
Ph. 636-537-2000
Fax 636-537-2546
www.mcbrooksidehomes.com

P+Z No. 02-17.01
City No.
Date: Nov. 7, 2017
Job No. 16-09-274
Page No.

4.2
IMP