

LEGEND
 I.D. - NOMINAL PIPE SIZE
 O.D. - OUTSIDE DIAMETER OF PIPE
 H - COVER ABOVE TOP OF PIPE
 A - EMBEDDED BELOW PIPE (SEE TABLE)

TAMPED BACK FILL
 COMPACTED BACK FILL
 GRANULAR BEDDING

TABLE OF EMBEDDED DEPTHS BELOW PIPE		
I.D.	A	A
27" & SMALLER	3"	6"

GRANULAR BEDDING SHALL BE CRUSHED ROCK OR PEA GRAVEL WITH NOT LESS THAN 95% PASSING 1/2" (95% PASSING 3/4" FOR 30" AND LARGER PIPE) AND NOT LESS THAN 50% RETAINED ON A #4. TO BE PLACED IN NOT MORE THAN 6" LAYERS AND COMPACTED BY SLUING WITH A SHOVEL OR VIBRATING.

COMPACTED BACK FILL SHALL BE FINELY DIVIDED JOB EXCAVATED MATERIAL FREE FROM DEBRIS, ORGANIC MATERIAL AND STONES, PLACED IN UNIFORM LAYERS NOT MORE THAN 6" THICK, COMPACTED TO 95% MAXIMUM DENSITY AS DETERMINED BY A S.T.M. DE98, OR GRADED AGGREGATE. GRANULAR BACK FILL MATERIAL MAY BE SUBSTITUTED FOR ALL OR PART OF COMPACTED BACK FILL.

TAMPED BACK FILL SHALL BE FINELY DIVIDED JOB EXCAVATED MATERIAL FREE FROM DEBRIS, ORGANIC MATERIAL AND STONES, HAND PLACED IN UNIFORM LAYERS NOT MORE THAN 8" THICK AND TAMPED AROUND CONDUIT PIPE. GRANULAR BACK FILL MATERIAL MAY BE SUBSTITUTED FOR ALL OR PART OF TAMPED BACK FILL.

JERDON BACK FILL SHALL BE AS REQUIRED IN THE "LAYING AND BACK FILL" SECTION OF THE DETAILED SPECIFICATIONS.

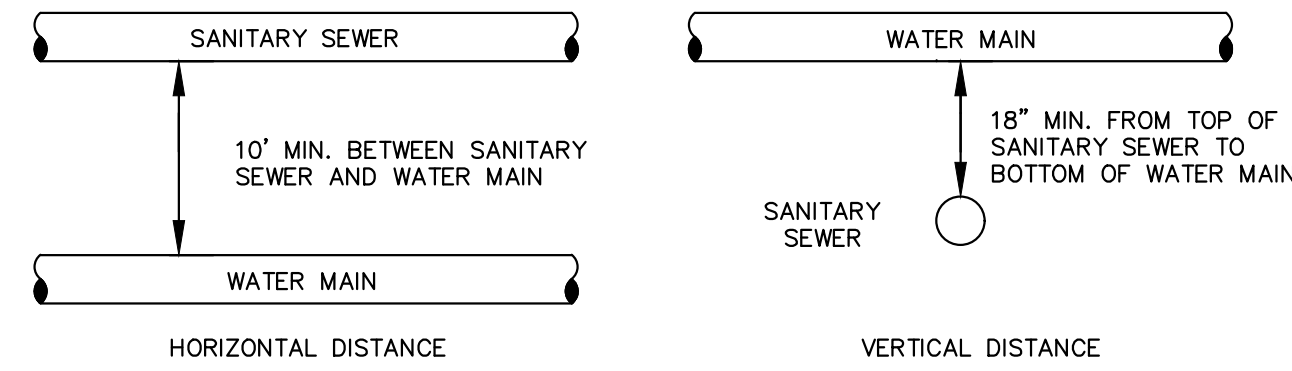
EMBED THE TYPE OF EMBEDDED TO BE USED SHALL BE AS SPECIFIED IN THE PLANS AND SPECIFICATIONS.

TRACER WIRE REQUIRED ON ALL WATER MAINS

WATER MAIN EMBEDDED
NOT TO SCALE

CITY OF O'FALLON
 ENGINEERING DEPARTMENT
 O'FALLON, MISSOURI

WATER MAIN EMBEDDED

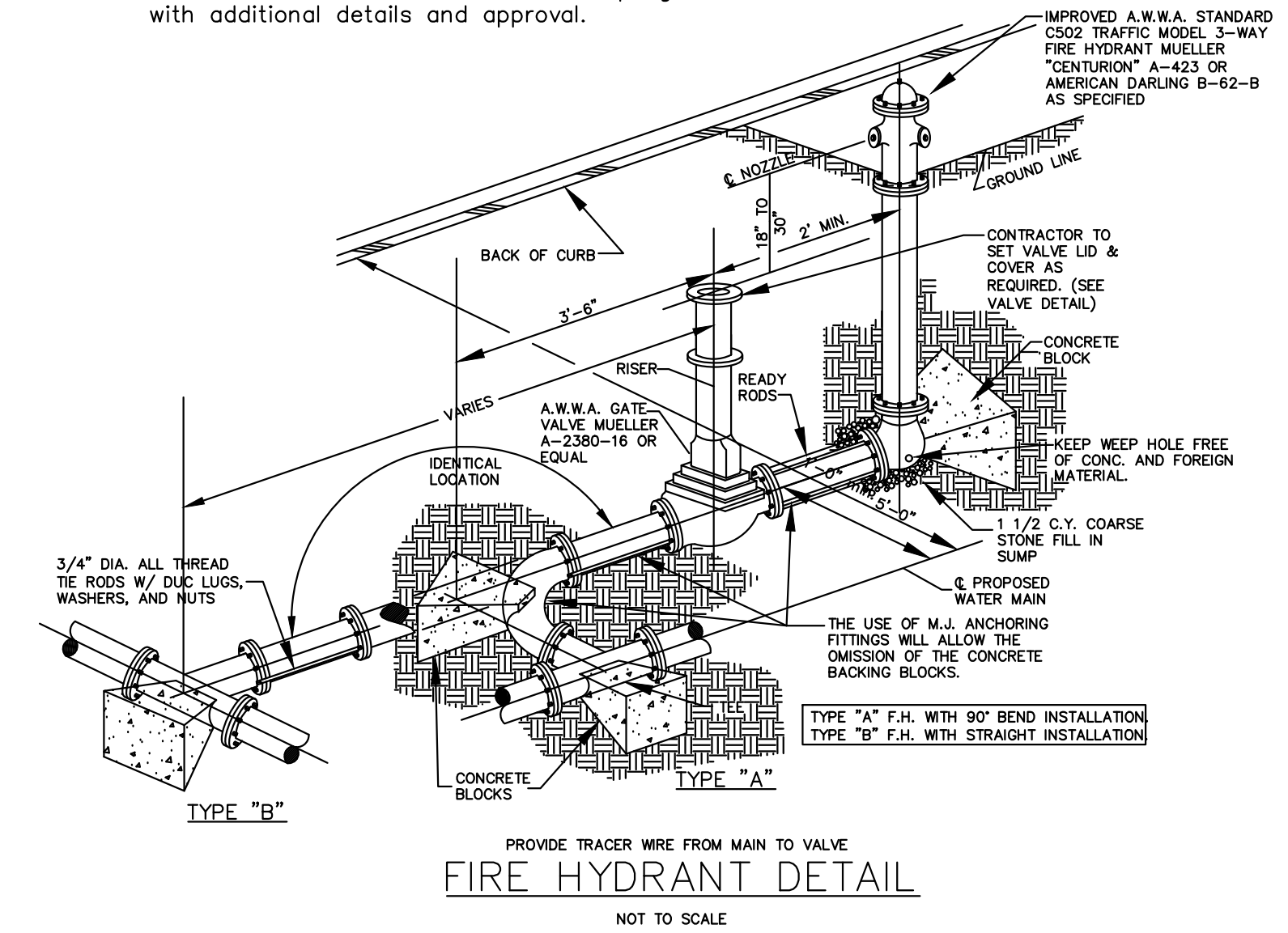


TYPICAL WATER AND SEWER SEPARATION
NOT TO SCALE

CITY OF O'FALLON
 ENGINEERING DEPARTMENT
 O'FALLON, MISSOURI

WATER AND SEWER SEPARATION DETAIL

Note: Other connections such as anchor coupling are allowable with additional details and approval.



- ISSUE REMARKS/DATE**
- 1 INITIAL SUBMITTAL 07-25-2017
 - 2 CITY & CLIENT REV. 09-08-17
 - 3 CITY REV. 10-16-17
 - 4 CITY REV. 10-27-17

CITY OF O'FALLON
 ENGINEERING DEPARTMENT
 O'FALLON, MISSOURI

FIRE HYDRANT DETAILS

PROJECT TITLE

BROOKSIDE FOREST
O'FALLON, MISSOURI

THE STERLING CO.
 ENGINEERS & SURVEYORS
 5065 New Baumgartner Road
 St. Louis, Missouri 63129
 Ph 314-487-0440 Fax 314-487-8944
 www.sterling-eng-sur.com
 Corporate Certificate of Authority #001348

THE STERLING COMPANY, ENGINEERS AND SURVEYORS, IS A PROFESSIONAL CORPORATION REGISTERED IN THE STATE OF MISSOURI. THE PROFESSIONAL ENGINEER'S SIGNATURE AND SEAL ARE REQUIRED FOR ALL PROFESSIONAL ENGINEERING WORK. THE PROFESSIONAL ENGINEER'S SEAL IS VALID FOR THE STATE OF MISSOURI ONLY. THE PROFESSIONAL ENGINEER'S SEAL IS NOT VALID FOR ANY OTHER STATE OR COUNTRY. THE PROFESSIONAL ENGINEER'S SEAL IS NOT VALID FOR ANY OTHER TYPE OF WORK. THE PROFESSIONAL ENGINEER'S SEAL IS NOT VALID FOR ANY OTHER TYPE OF WORK.



Date: 11-7-17
 Jason D Howell
 License No. PE 2007002801
 Civil Engineer

Brookside Forest, LLC
 16091 SWINGLEY RIDGE ROAD, SUITE 300
 CHESTERFIELD, MISSOURI 63017
 Ph. 636-537-2000
 Fax 636-537-2546
 www.mcbridehomes.com

WATER DETAILS

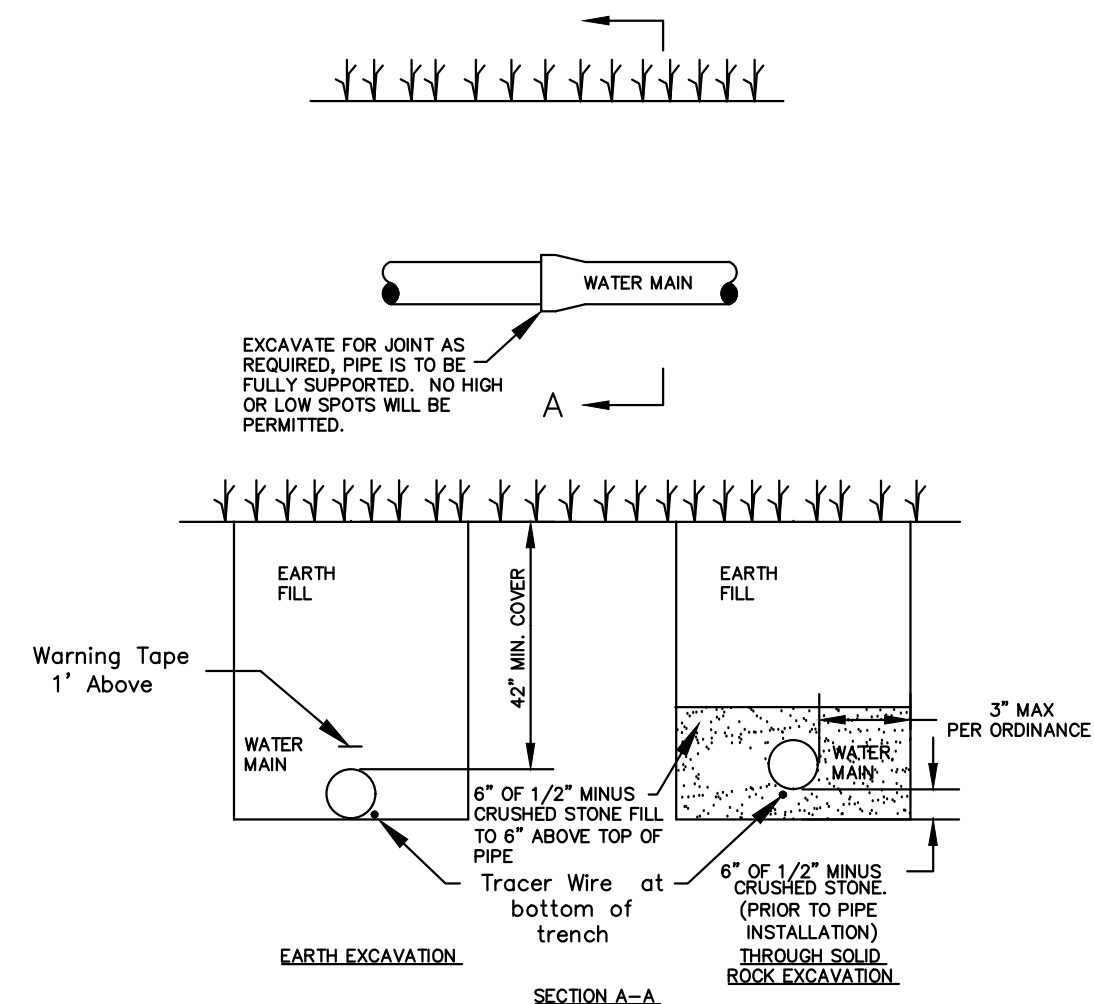
P+Z No. 02-17.01
City No.
Date: Nov. 7, 2017
Job No. 16-09-274

Page No.

5.4

IMP

Ductile Iron Pipe installation shall follow the Ductile Iron Research Association (DIPRA) guide line.
 The Installation of PVC Pipe shall follow the Uni-Bell PVC Pipe Association Handbook of PVC Design and Construction.



TYPICAL WATER MAIN INSTALLATION DETAILS
NOT TO SCALE

CITY OF O'FALLON
 ENGINEERING DEPARTMENT
 O'FALLON, MISSOURI

WATER MAIN INSTALLATION DETAIL