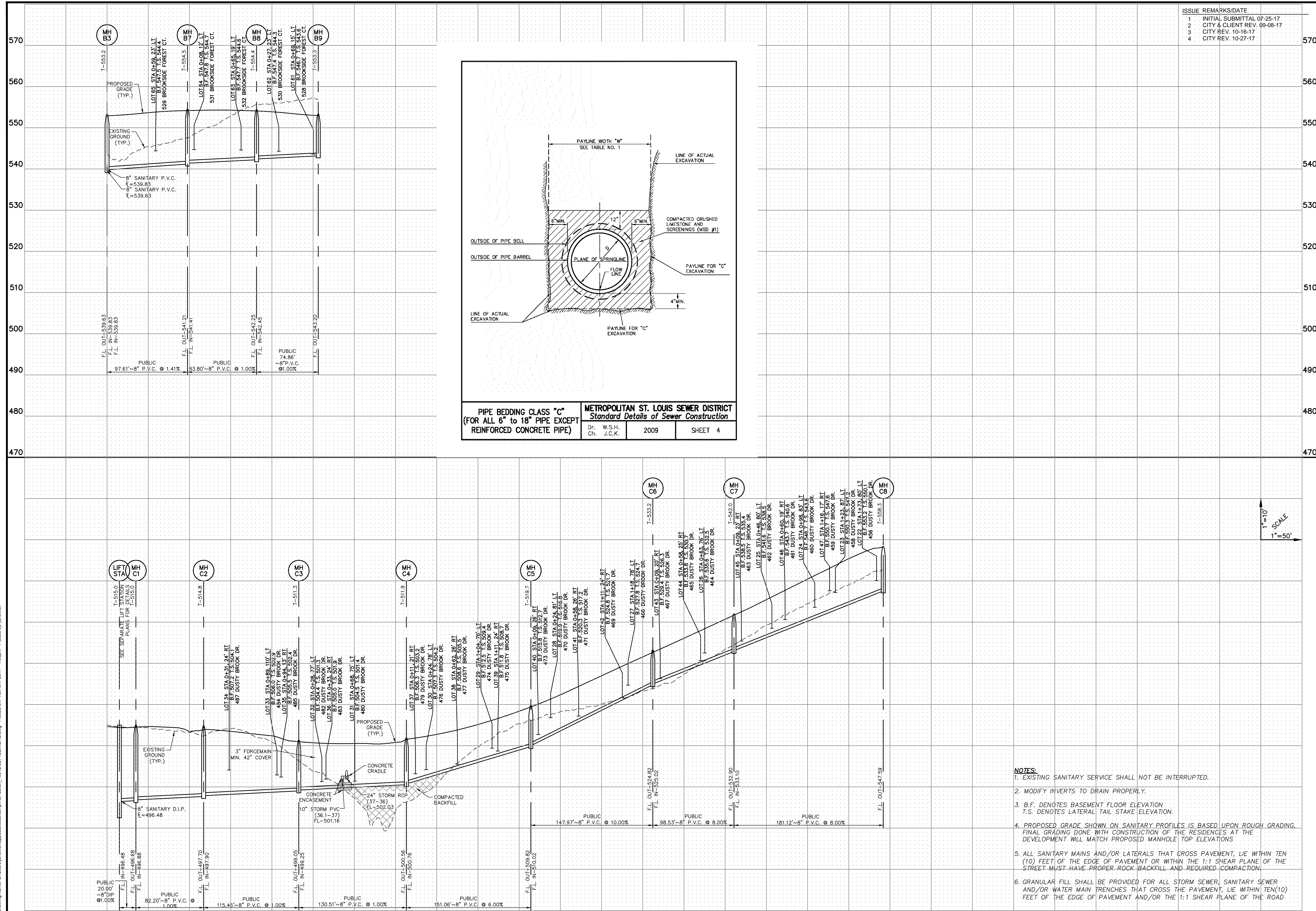


Drawing name: C:\Users\jhowell\appdata\local\temp\AcP\Pub_13512824\SEWER.dwg Printed on: Nov 07, 2017, 1:03pm. Printed by: jhowell



PROJECT TITLE

BROOKSIDE FOREST
OF FALLON, MISSOURI

THE STERLING CO.
ENGINEERS & SURVEYORS
5065 New Baumgartner Road
St. Louis, Missouri 63129
Ph 314-487-0440 Fax 314-487-8944
www.sterling-eng-sur.com
Corporate Certificate of Authority #001348



Date: 11-7-17
Jason D Howell
License No. PE 2007002801
Civil Engineer

Brookside Forest, LLC
16091 SWINGLEY RIDGE ROAD, SUITE 300
CHESTERFIELD, MISSOURI 63017
Ph. 636-537-2000
Fax 636-537-2546
www.mcbrookside.com

SANITARY SEWER PROFILES

P+Z No. 02-17-01
City No.
Date: Nov. 7, 2017
Job No. 16-09-274
Page No.

7.2

IMP