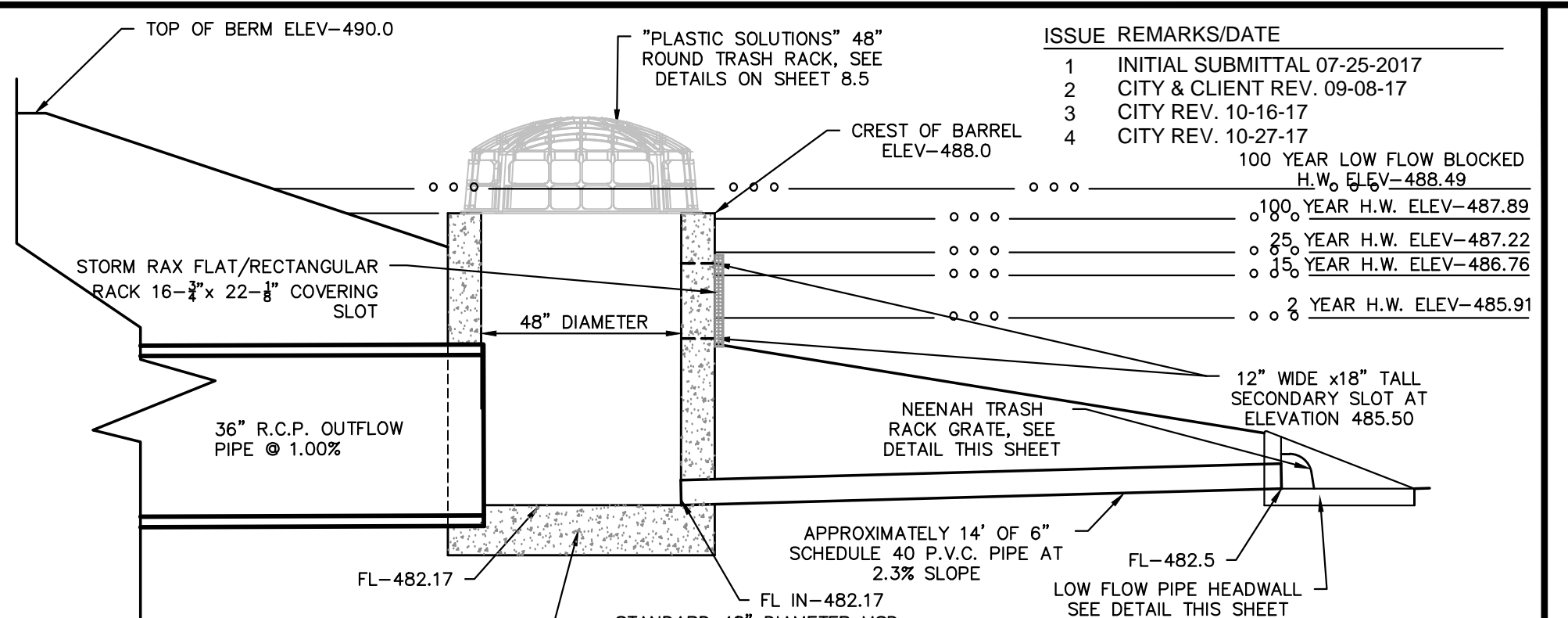
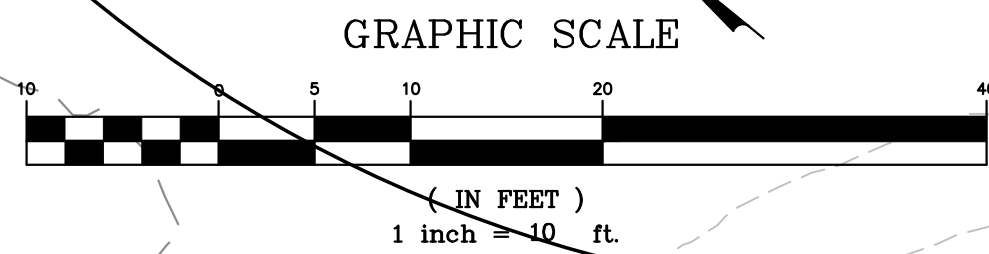
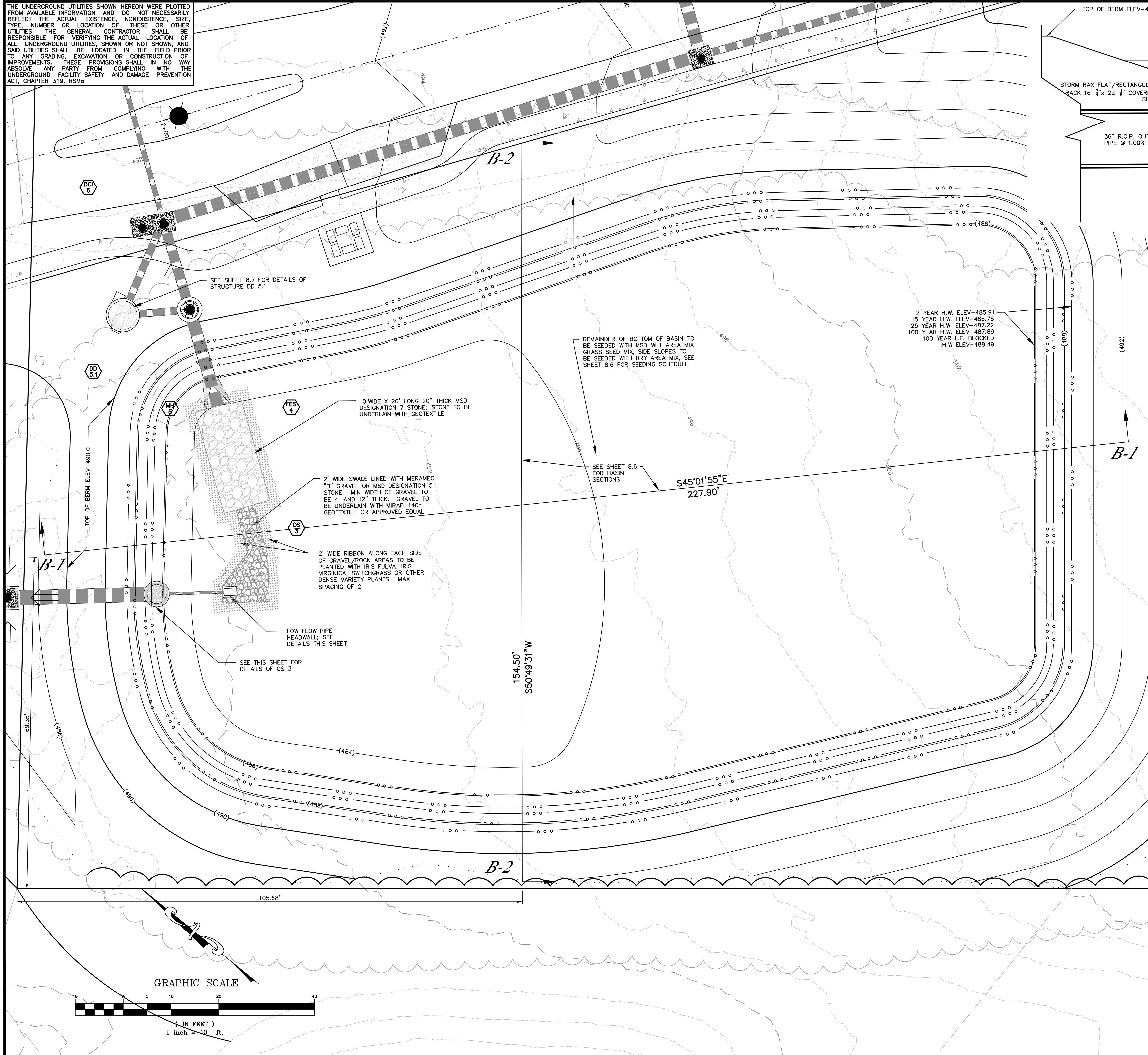
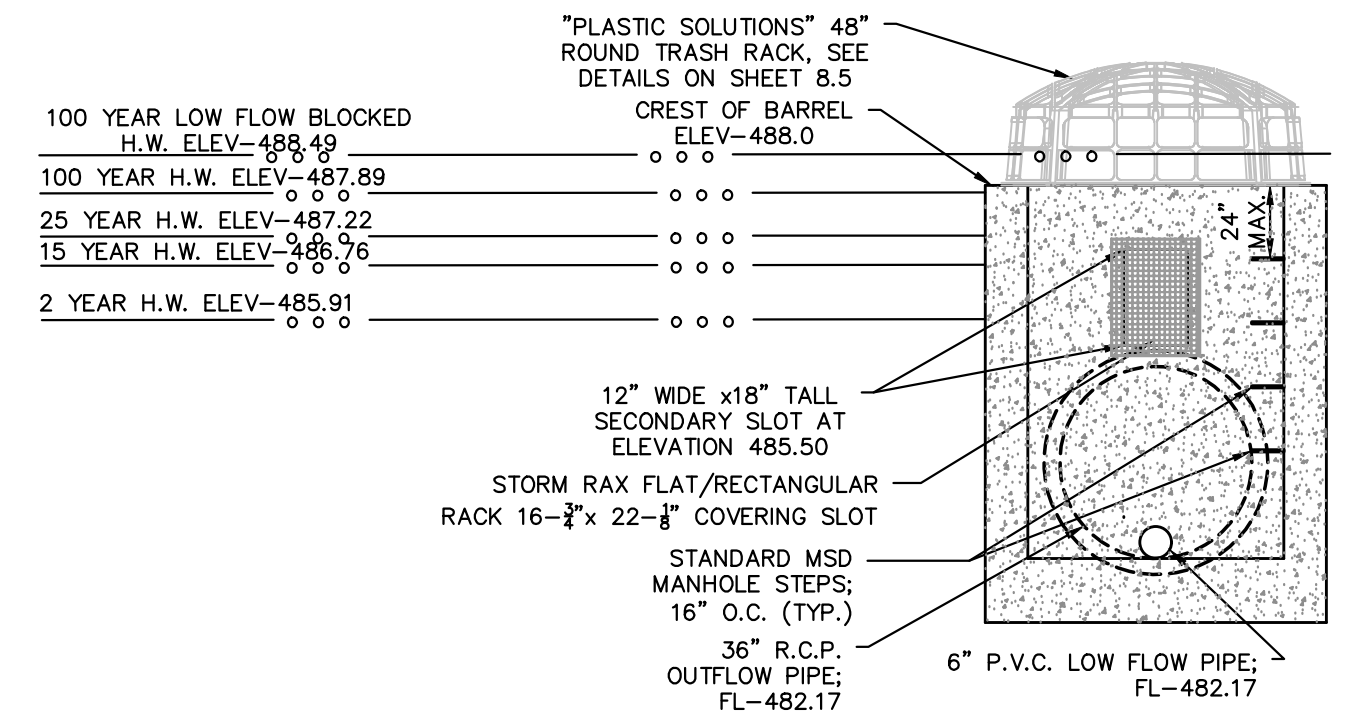


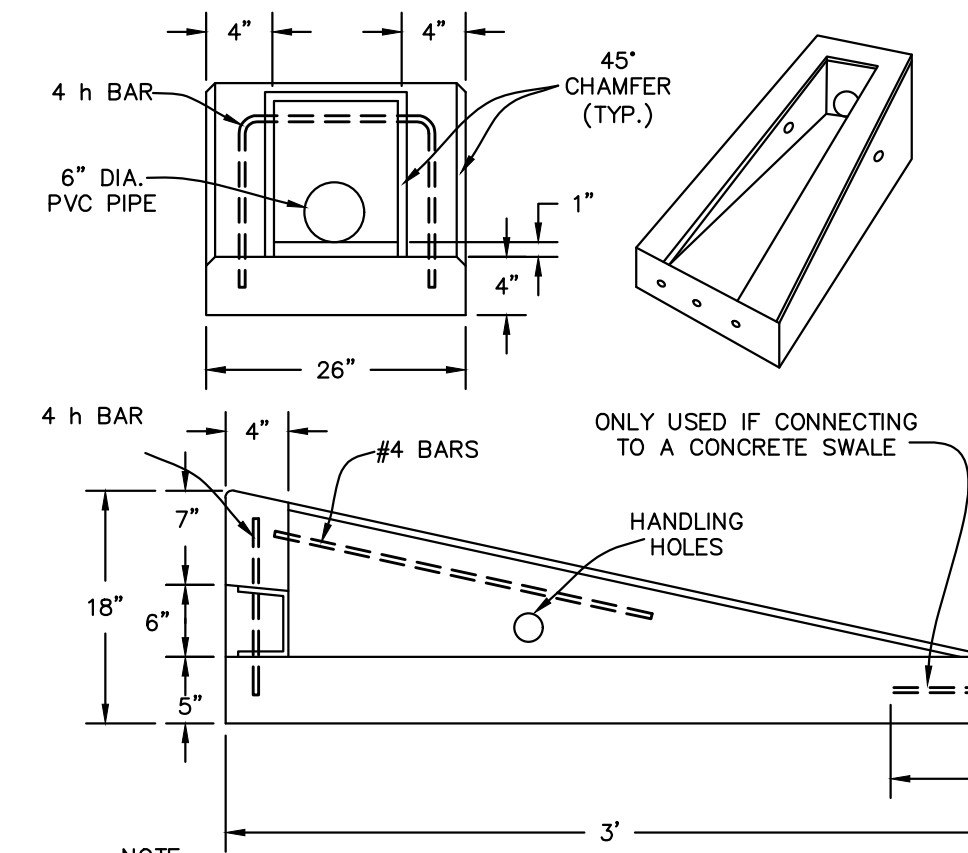
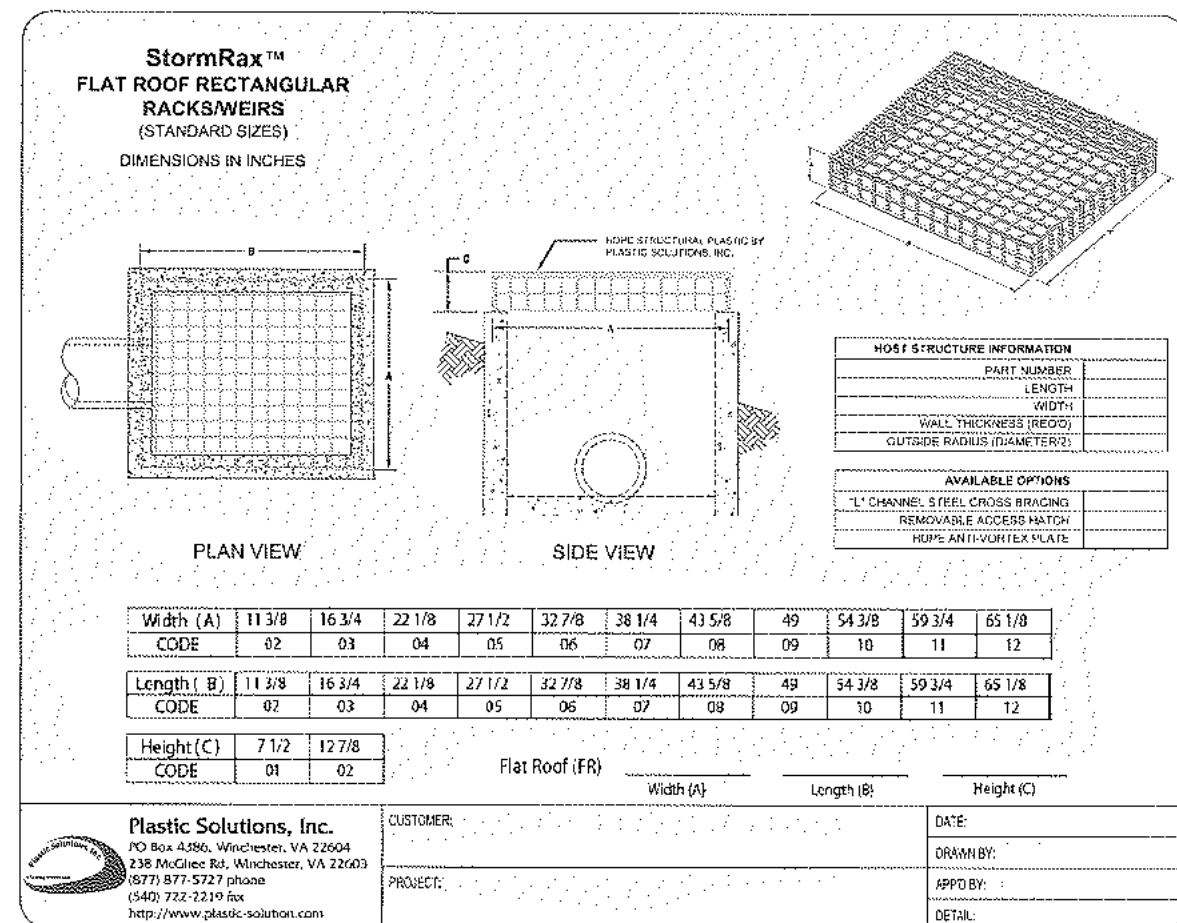
THE UNDERGROUND UTILITIES SHOWN HEREON WERE PLOTTED FROM AVAILABLE INFORMATION AND DO NOT NECESSARILY REFLECT THE ACTUAL EXISTENCE, NONEXISTENCE, SIZE, TYPE, NUMBER OR LOCATION OF THESE OR OTHER UTILITIES. THE GENERAL CONTRACTOR SHALL BE RESPONSIBLE FOR VERIFYING THE ACTUAL LOCATION OF ALL UNDERGROUND UTILITIES, SHOWN OR NOT SHOWN, AND SAID UTILITIES SHALL BE LOCATED IN THE FIELD PRIOR TO ANY GRADING, EXCAVATION OR CONSTRUCTION OF IMPROVEMENTS. THESE PROVISIONS SHALL IN NO WAY ABSOLVE ANY PARTY FROM COMPLYING WITH THE UNDERGROUND FACILITY SAFETY AND DAMAGE PREVENTION ACT, CHAPTER 319, RSMo



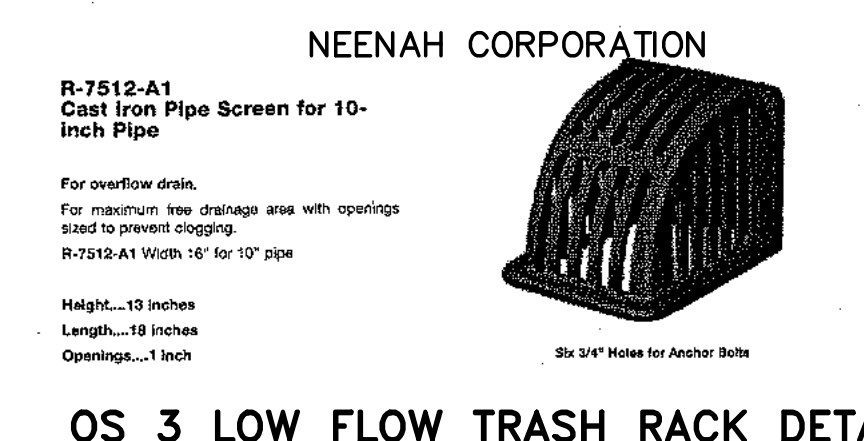
OUTFALL STRUCTURE 3 SIDE SECTION SCALE: 1"=3'



OUTFALL STRUCTURE 3 FRONT SECTION SCALE: 1"=3'



OS 3 TRASH RACK HEADWALL DETAIL N.T.S.



OS 3 LOW FLOW TRASH RACK DETAIL

PROJECT TITLE

BROOKSIDE FOREST
OF FALLON, MISSOURI

THE **STERLING** CO.
ENGINEERS & SURVEYORS
5065 New Baumgartner Road
St. Louis, Missouri 63129
Ph 314-487-0440 Fax 314-487-8944
www.sterling-eng-sur.com
Corporate Certificate of Authority #001348

Date: 11-7-17
Jason D Howell
License No. PE 2007002801
Civil Engineer

Brookside Forest, LLC
16091 SWINGLEY RIDGE ROAD, SUITE 300
CHESTERFIELD, MISSOURI 63017
Ph. 636-537-2000
Fax 636-537-2546
www.mcbrookside.com

DETENTION BASIN/OUTFALL STRUCTURE DETAILS

P+Z No. 02-17.01
City No.
Date: Nov. 7, 2017
Job No. 16-09-274

Page No.

8.4

IMP