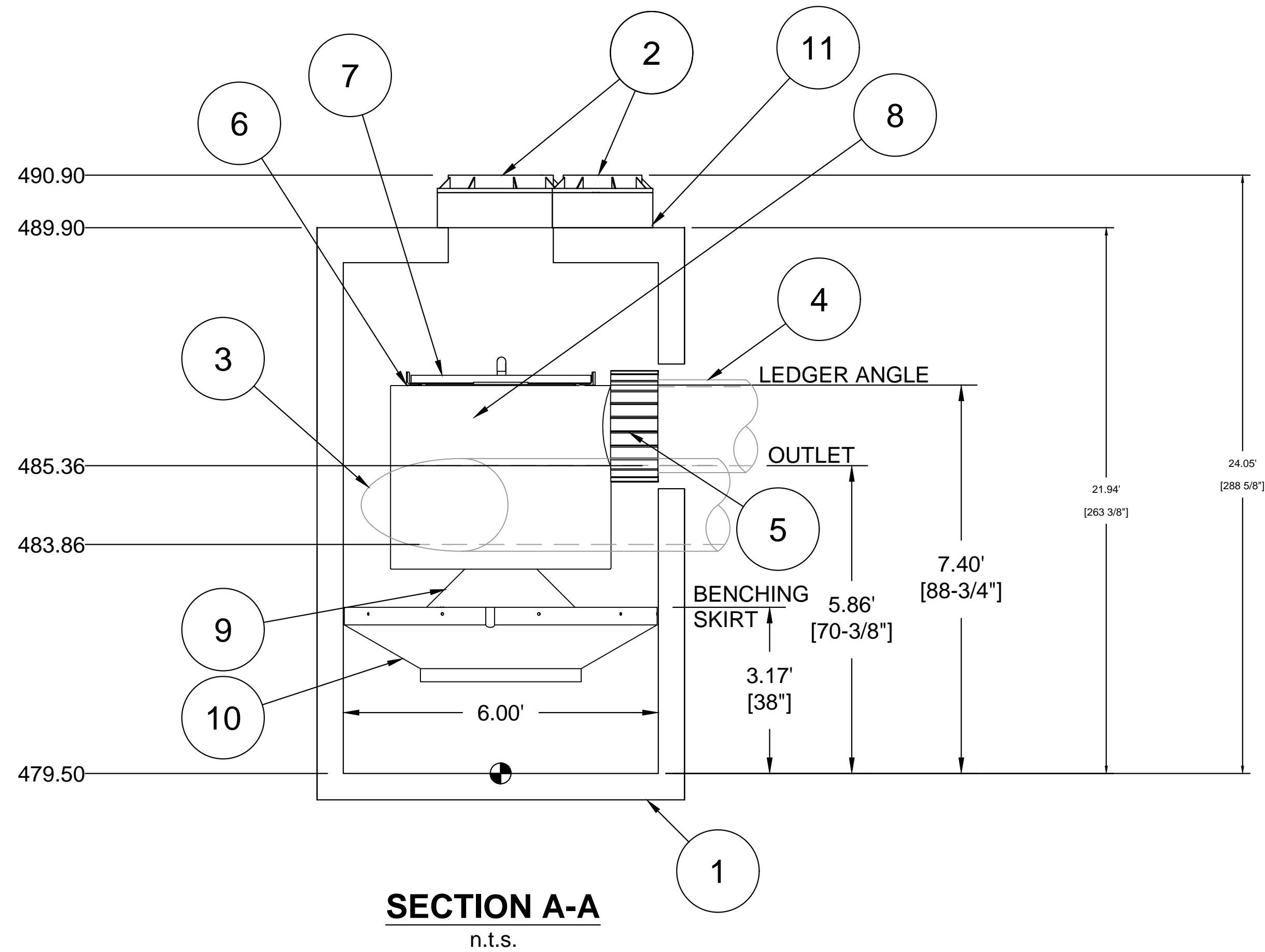


**PARTS LIST: 6' DOWNSTREAM DEFENDER**

ITEM	SIZE (IN)	MATERIAL	DESCRIPTION
1	72	CONCRETE	I.D. PRECAST MANHOLE
2	18 & 24	-	FRAME & COVER
3	18	PVC	INLET PIPE (BY OTHERS)
4	18	PVC	OUTLET PIPE (BY OTHERS)
5	18	-	PIPE COUPLING (BY OTHERS)
6	-	-	LEDGER ANGLE
7	-	-	SUPPORT FRAME
8	-	-	DIP PLATE
9	-	-	CENTER SHAFT & CONE
10	-	-	BENCHING SKIRT
11	-	-	MATERIALS & LABOR TO ACHIEVE FINAL GRADE (BY OTHERS)

**NOTES:**

ENGINEER / CONTRACTOR TO CONFIRM PIPE MATERIALS.



**SECTION A-A**  
n.t.s.

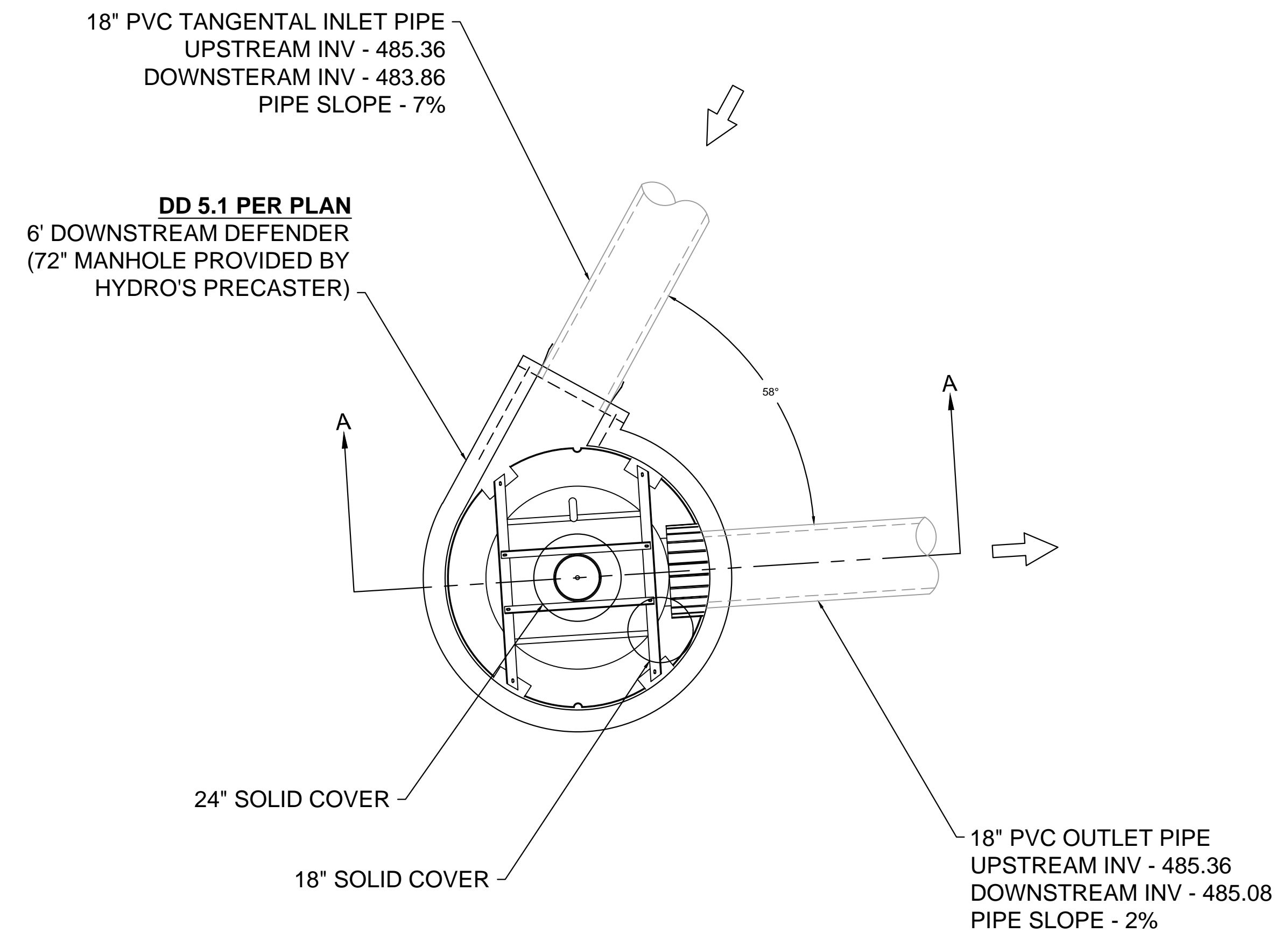
**CAPACITIES**

1. PEAK TREATMENT FLOW: 8.0 CFS (227 L/S)
2. SEDIMENT STORAGE CAPACITY: 2.10 YD<sup>3</sup> (1.61 m<sup>3</sup>)
3. OIL STORAGE CAPACITY: 216 GALLONS (818 LITERS)

**ADDITIONAL DESIGN INFORMATION**

1. THE OUTLET PIPE STUB IS A ROTO-MOLDED PRODUCT WITH AN I.D. OF 18" THAT CANNOT BE MODIFIED. TO AVOID THE USE OF A REDUCER OR EXPANDER ON THE OUTLET AN 18" OUTLET PIPE SHOULD BE USED IF POSSIBLE.
2. ONLY SMALLER INLET PIPES MAY BE USED. THE INLET PIPE INVERT SHOULD BE PLACED ONE INLET PIPE DIAMETER BELOW THE OUTLET PIPE INVERT. THE I.D. OF THE INLET PIPE SHOULD BE PLACED TANGENT TO THE I.D. OF THE MANHOLE. HEADLOSS AT 8.0 CFS WITH AN 18" INLET: 12" (305 mm). HEADLOSS WILL INCREASE WITH SMALLER INLET PIPES.
3. SEDIMENT SHALL BE STORED IN A ZONE THAT IS ISOLATED FROM THE MAIN FLOW PATH AND PROTECTED FROM RE-ENTRAINMENT BY THE BENCHING SKIRT.

UPSTREAM ELEVATED BYPASS INVERT  
INV: 486.41



**PLAN VIEW**  
n.t.s.

<b>BROOKSIDE FOREST</b>	
O'FALLON, MO	
DATE: 09-19-17	DRAWN: VLW
PROJECT #: S032607	CHECKED: MRJ

REV	DESCRIPTION	CKD	DWN
#	#	#	#
#	#	#	#
#	#	#	#
#	#	#	#
#	#	#	#
#	#	#	#
#	#	#	#
#	#	#	#
#	#	#	#
#	#	#	#

STORMWATER SOLUTIONS  
94 HUTCHINS DR.  
PORTLAND, ME 04102-1930  
(207) 756-6200  
WWW.HYDRO-INT.COM

**Hydro International**

THE DOWNSTREAM DEFENDER® AND FIRST DEFENSE® ARE REGISTERED, MANUFACTURED AND SUPPLIED BY HYDRO INTERNATIONAL P.L.C. AND ALL TRADEMARKS ARE THE PROPERTY OF HYDRO INTERNATIONAL P.L.C.

4640 TRUEEMAN BLVD  
HILLIARD, OH 43026

**ADS**  
ADVANCED DRAINAGE SYSTEMS, INC.

**STRUCTURE DD5.1**  
**DETAILS**