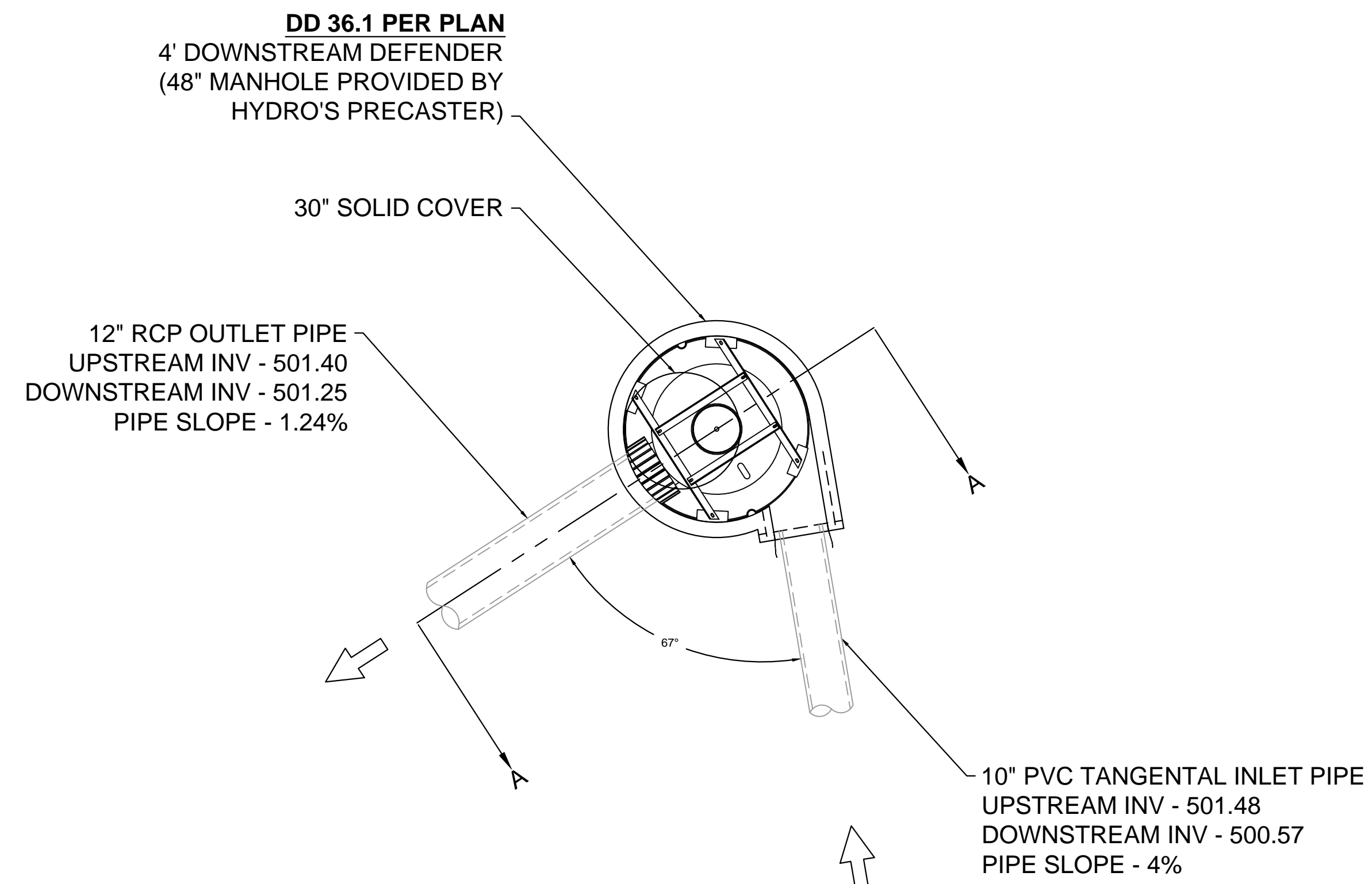
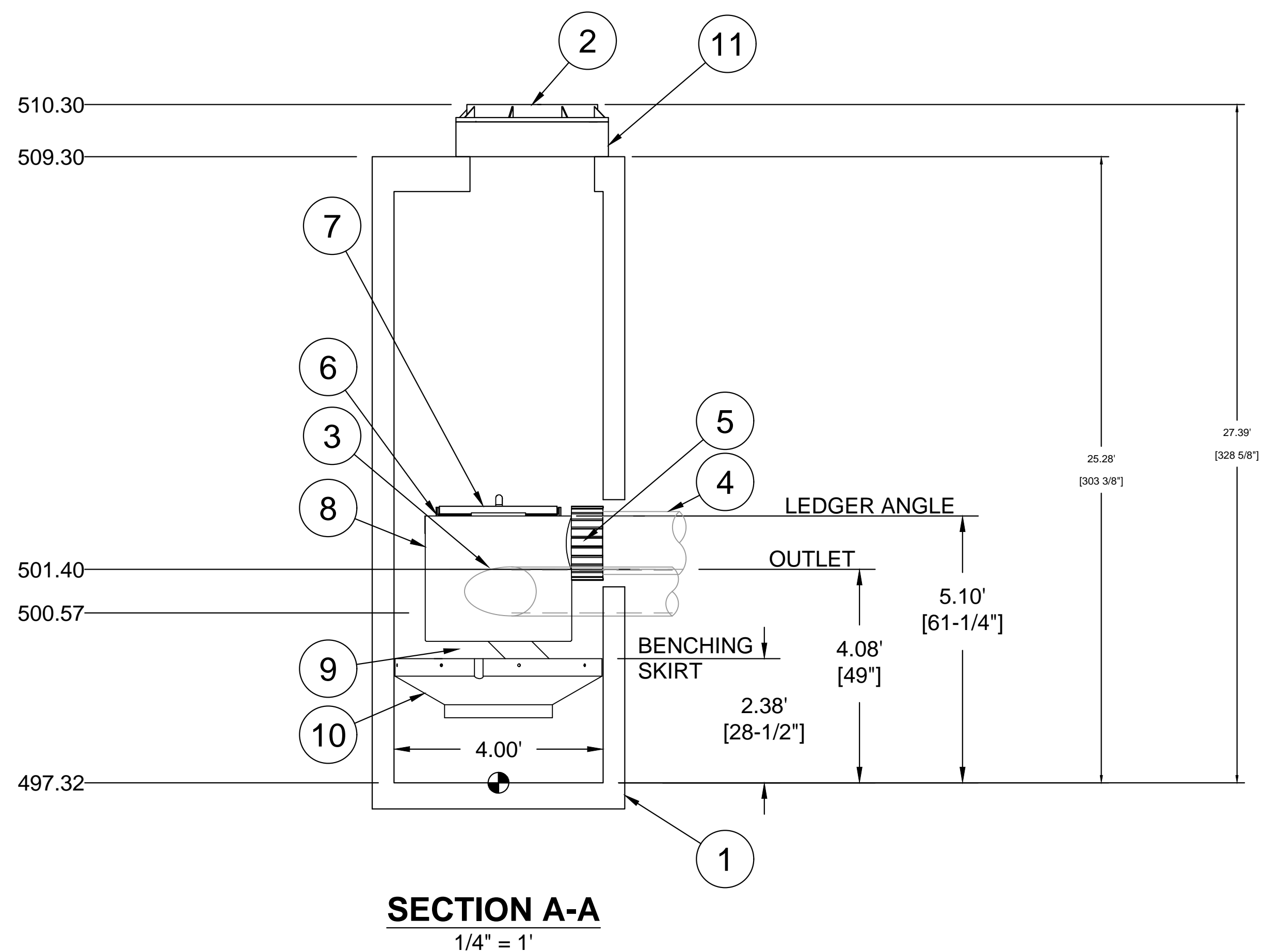


PARTS LIST: 4' DOWNSTREAM DEFENDER

ITEM	SIZE (IN)	MATERIAL	DESCRIPTION
1	48	CONCRETE	I.D. PRECAST MANHOLE
2	30	-	FRAME & COVER
3	10	PVC	INLET PIPE (BY OTHERS)
4	12	RCP	OUTLET PIPE (BY OTHERS)
5	12	-	PIPE COUPLING (BY OTHERS)
6	-	-	LEDGER ANGLE
7	-	-	SUPPORT FRAME
8	-	-	DIP PLATE
9	-	-	CENTER SHAFT & CONE
10	-	-	BENCHING SKIRT
11	-	-	MATERIALS & LABOR TO ACHIEVE FINAL GRADE (BY OTHERS)

NOTES:
ENGINEER / CONTRACTOR TO CONFIRM PIPE MATERIALS.



UPSTREAM ELEVATED BYPASS INVERT
INV: 502.13

CAPACITIES

1. PEAK TREATMENT FLOW: 3.0 CFS (85 L/S)
2. SEDIMENT STORAGE CAPACITY: 0.70 YD³ (0.54 m³)
3. OIL STORAGE CAPACITY: 70 GALLONS (265 LITERS)

ADDITIONAL DESIGN INFORMATION

1. THE OUTLET PIPE STUB IS A ROTO-MOLDED PRODUCT WITH AN I.D. OF 12" THAT CANNOT BE MODIFIED. TO AVOID THE USE OF A REDUCER OR EXPANDER ON THE OUTLET A 12" OUTLET PIPE SHOULD BE USED IF POSSIBLE.
2. ONLY SMALLER INLET PIPES MAY BE USED. THE INLET PIPE INVERT SHOULD BE PLACED ONE INLET PIPE DIAMETER BELOW THE OUTLET PIPE INVERT. THE I.D. OF THE INLET PIPE SHOULD BE PLACED TANGENT TO THE I.D. OF THE MANHOLE. HEADLOSS AT 3.0 CFS WITH A 12" INLET: 8" (203 mm). HEADLOSS WILL INCREASE WITH SMALLER INLET PIPES.
3. SEDIMENT SHALL BE STORED IN A ZONE THAT IS ISOLATED FROM THE MAIN FLOW PATH AND PROTECTED FROM RE-ENTRAINMENT BY THE BENCHING SKIRT.

BROOKSIDE FOREST O'FALLON, MO	DATE: 09-19-17	DRAWN: VLV	CHECKED: MRJ		
Hydro international	STORMWATER SOLUTIONS 84 HUTCHINS DR. PORT CHARLES, MO 64306 WWW.HYDRO-INT.COM				
ADS ADVANCED DRAINAGE SYSTEMS, INC.	THE DOWNSTREAM DEFENDER® AND FIRST DEFENSE® ARE DESIGNED, MANUFACTURED AND SUPPLIED BY HYDRO INTERNATIONAL P.L.C. AND ALL TRADEMARKS ARE THE PROPERTY OF HYDRO INTERNATIONAL P.L.C.				
4640 TRUEMAN BLVD HILLIARD, OH 43026	STRUCTURE DD36.1 DETAILS				
THIS DRAWING HAS BEEN PREPARED BASED ON INFORMATION PROVIDED TO ADS UNDER THE DIRECTION OF THE SITE DESIGN ENGINEER OR OTHER PROJECT REPRESENTATIVE. THE SITE DESIGN ENGINEER SHALL REVIEW THIS DRAWING PRIOR TO CONSTRUCTION. IT IS THE ULTIMATE RESPONSIBILITY OF THE SITE DESIGN ENGINEER TO ENSURE THAT THE PRODUCT(S) DEPICTED AND ALL ASSOCIATED DETAILS MEET ALL APPLICABLE LAWS, REGULATIONS, AND PROJECT REQUIREMENTS.					