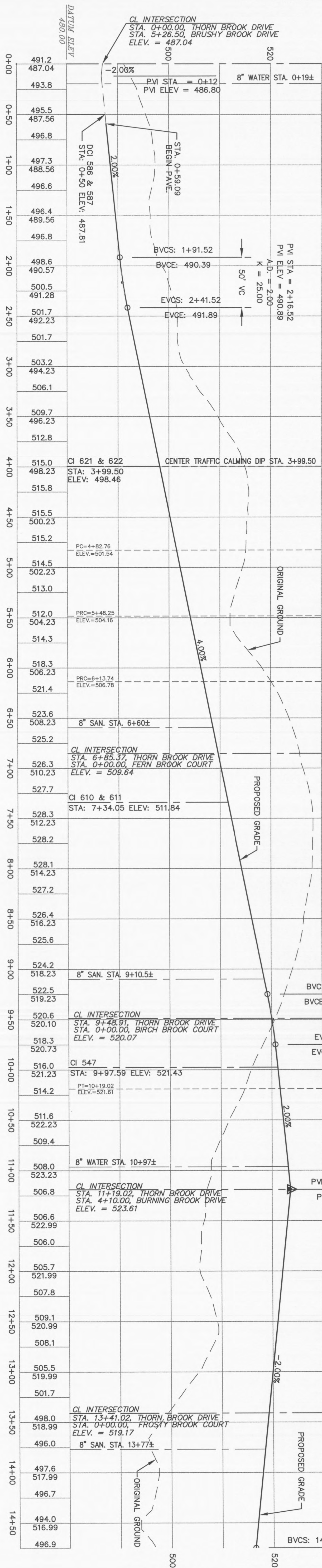
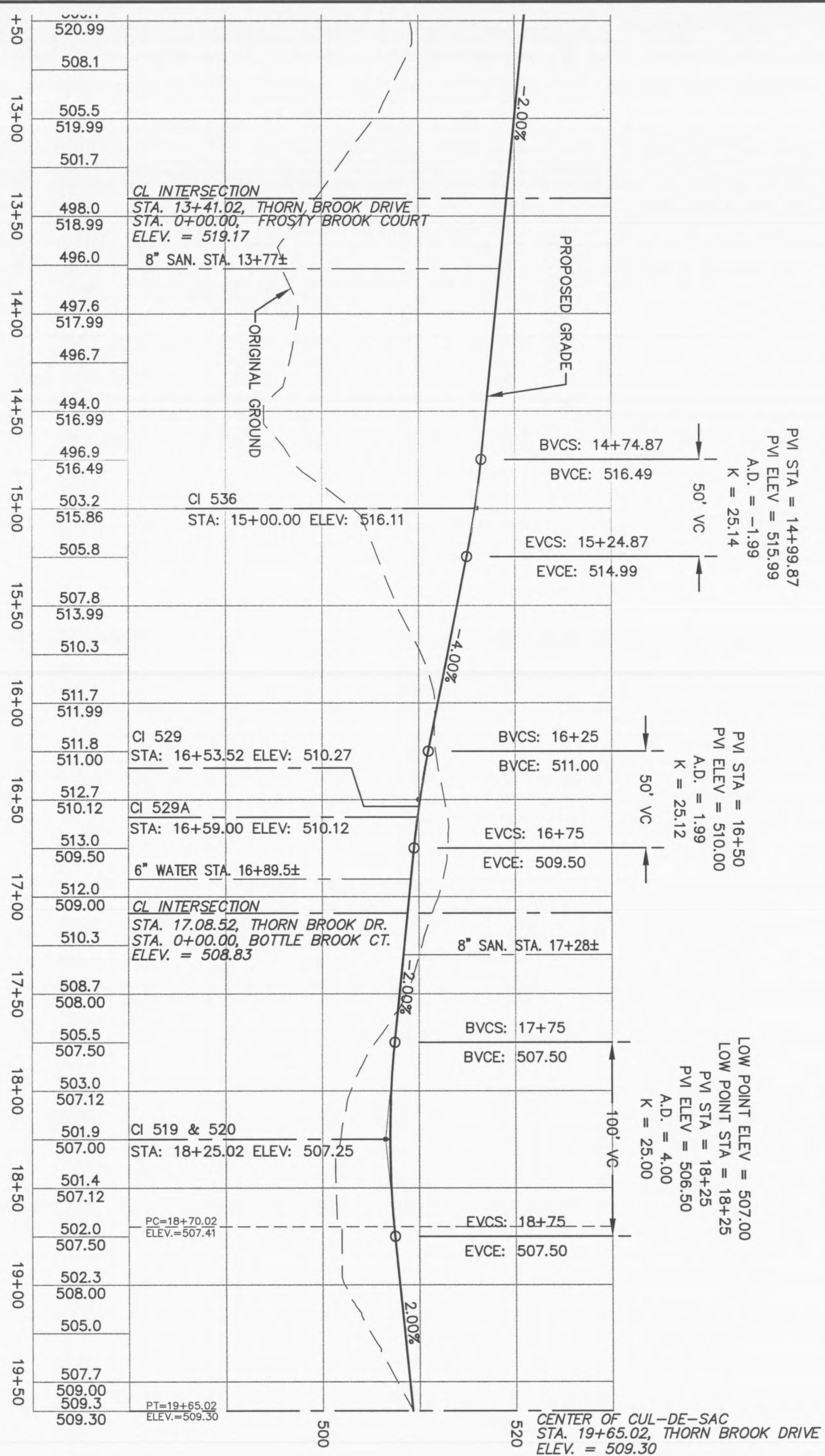


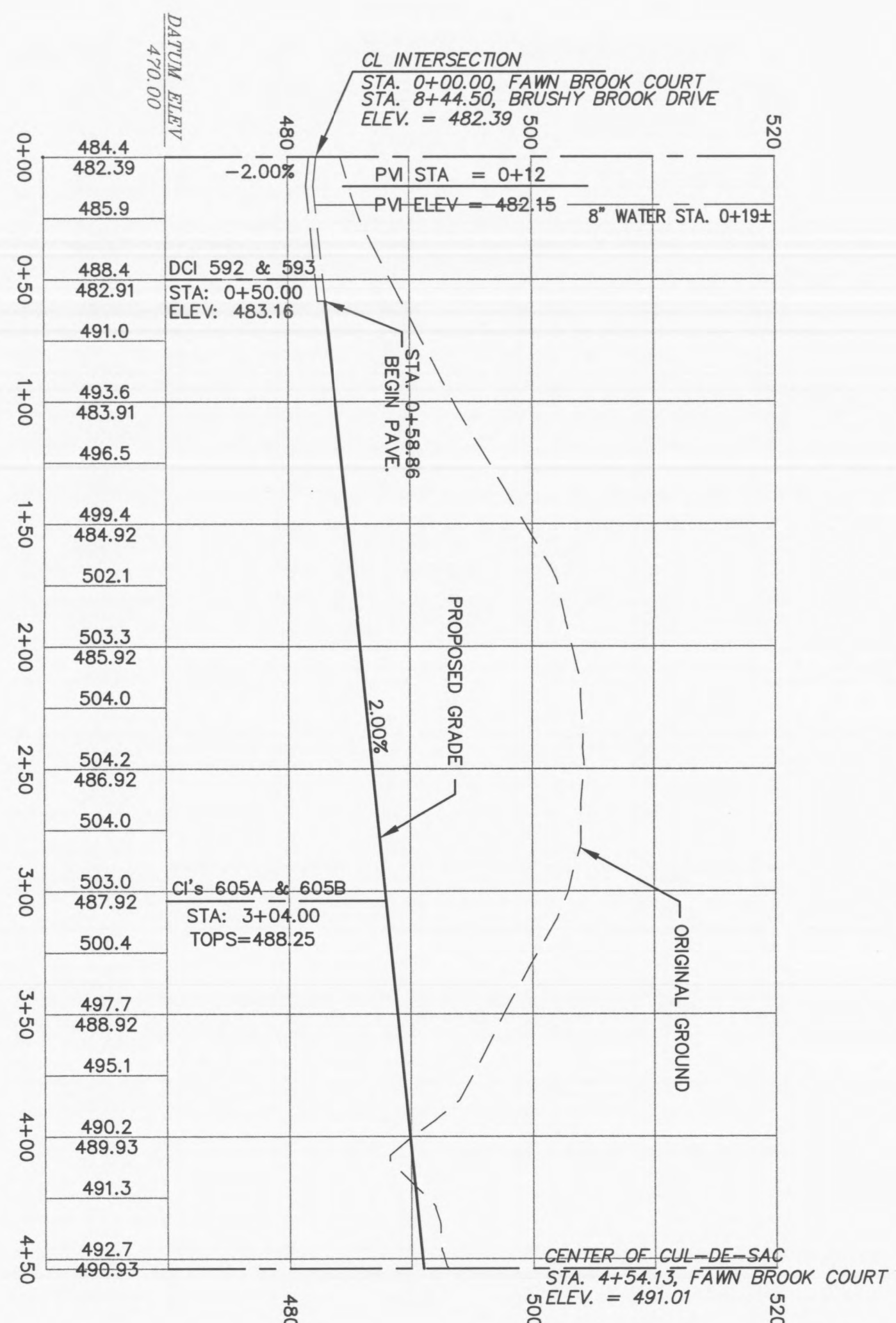
THORN BROOK DRIVE



THORN BROOK DRIVE



FAWN BROOK COURT



SCALE: 1"=50' HORIZONTAL
1"=10' VERTICAL

CONTINUED BELOW

City of O'Fallon Standard Subdivision Notes and Details - June 2010

Developer / Owner Information
Lombardo H.O.M.E.S. OF EXCELLENCE
 Lombardo Homes of St. Louis, LLC
 2299 Technology Drive, Suite 150
 O'Fallon, Missouri 63368
 CITY OF O'FALLON Street Profiles

PROFESSIONAL ENGINEER
 PICKETT, RAY & SILVER, INC.
 REGISTERED PROFESSIONAL ENGINEER
 STATE OF MISSOURI
 LICENSE NO. 22936
 PROJECT: ST. PETERS, MO

PICKETT, RAY & SILVER INC
 CIVIL ENGINEERING, LAND SURVEYING,
 AND NATURAL RESOURCES SERVICES
 St. Peters: 22 Richmond Center Court, St. Peters, MO 63376
 Branson: 110 West Adams, Suite 201, Branson, Mo 65616
 Phone (636) 397-1211 Fax (636) 397-1104
 www.prs3.com 1-800-708-3918

PROJECT TITLE
BROOKSIDE VILLAGE A
 PRS No. 03029.LOMB.01R