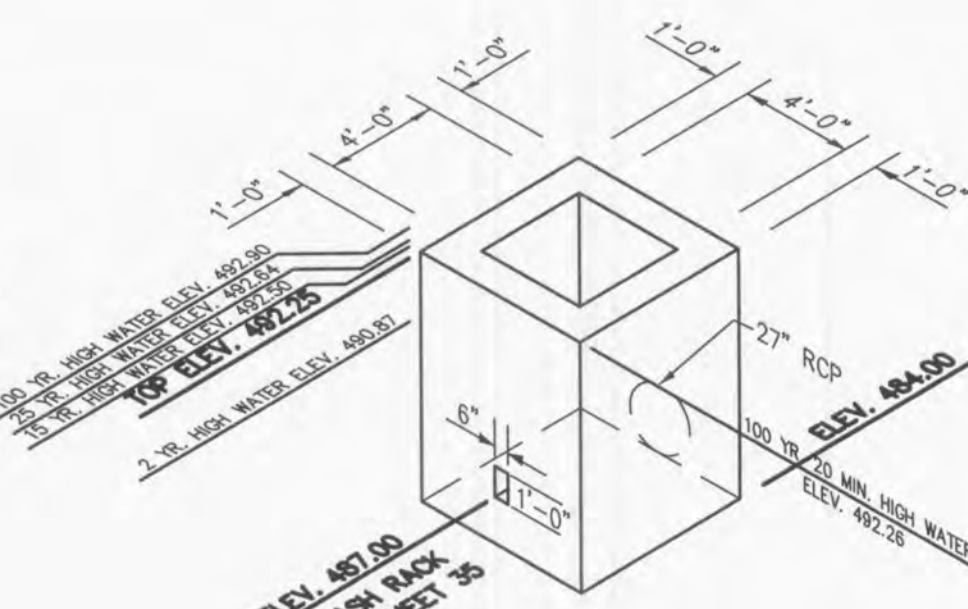
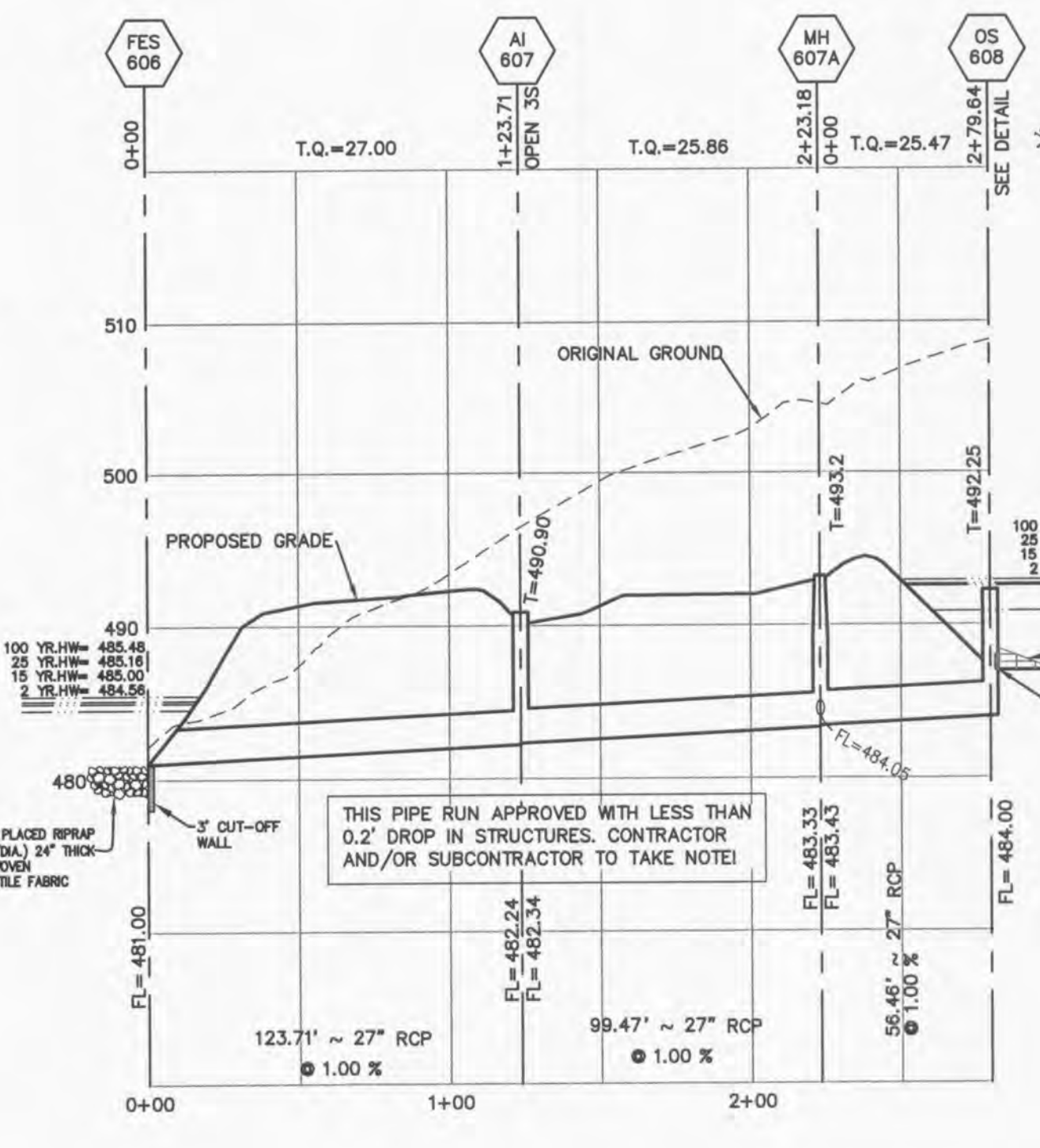
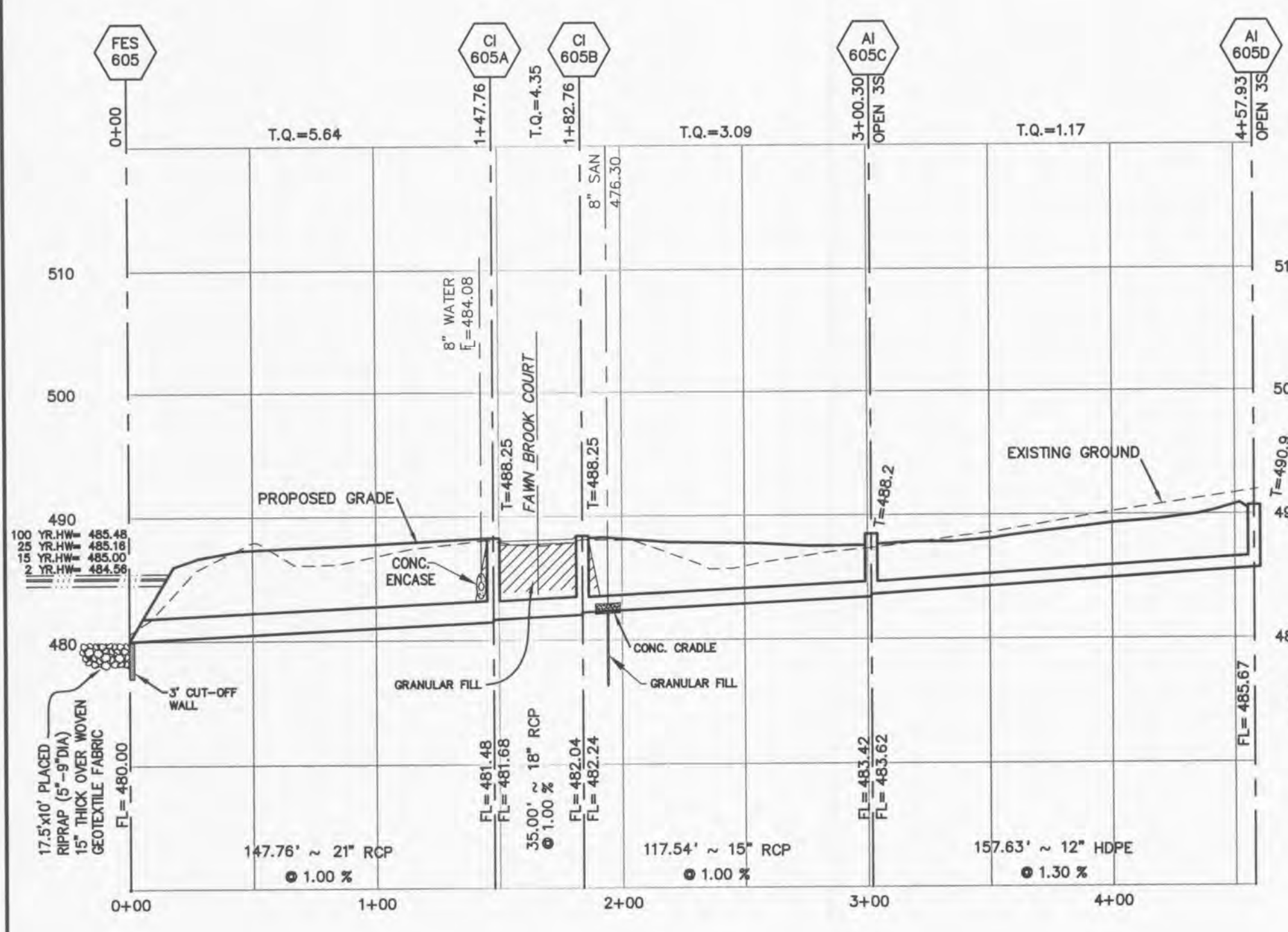


SCALE: 1"=50' HORIZONTAL  
1"=10' VERTICAL

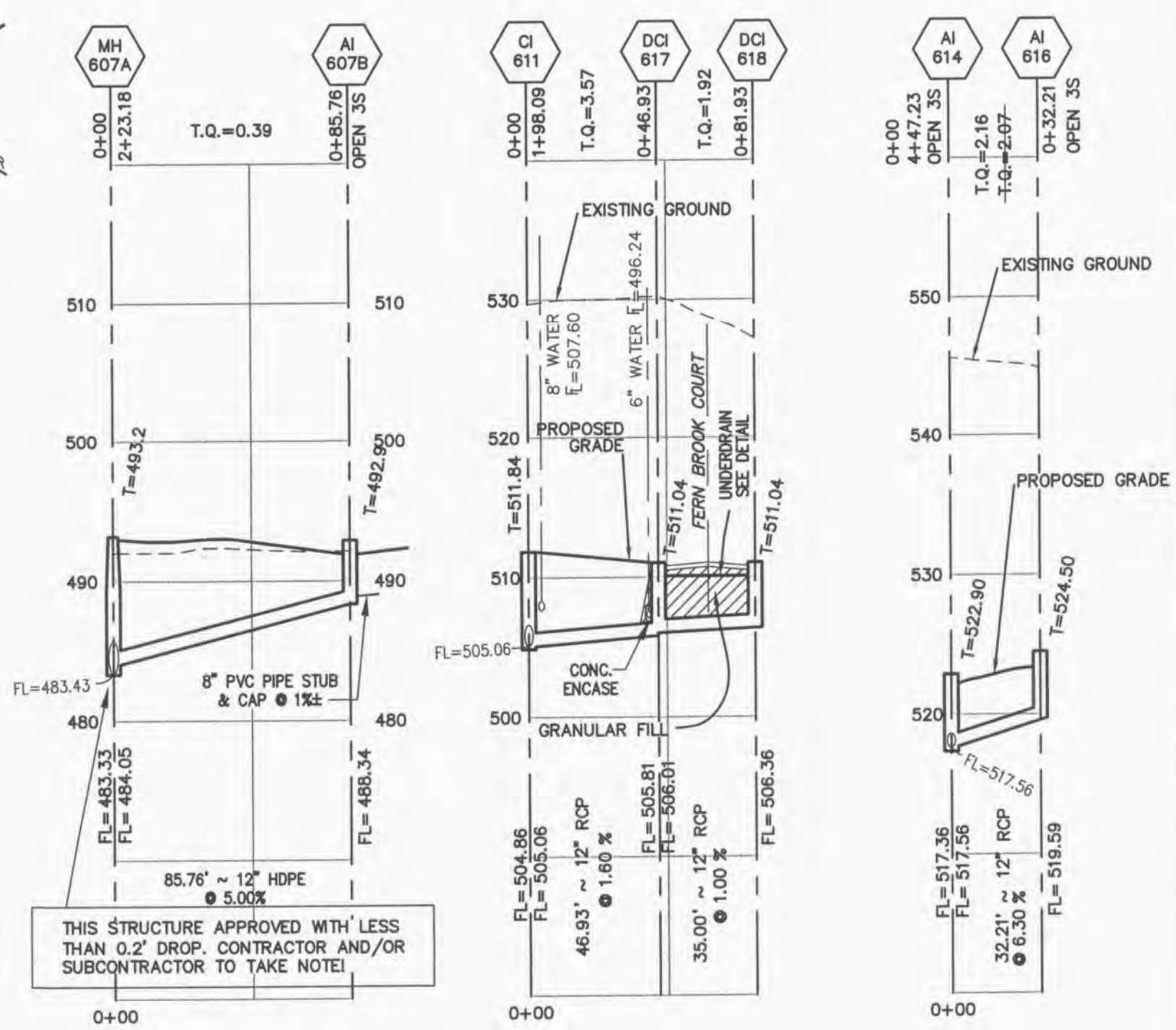
ALL STORM SEWERS MUST MAINTAIN A MINIMUM OF 36" COVER OVER TOP OF PIPE.



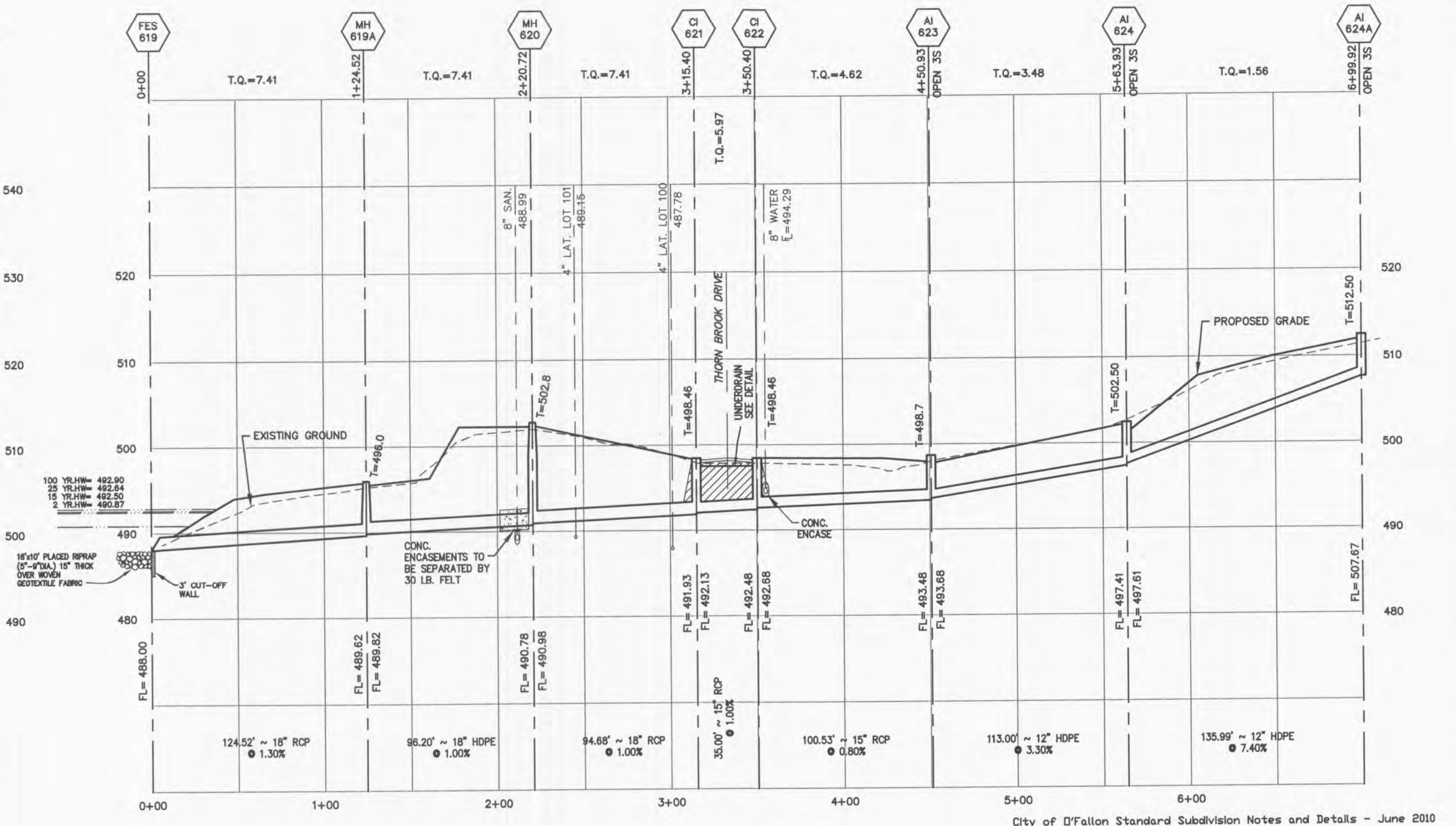
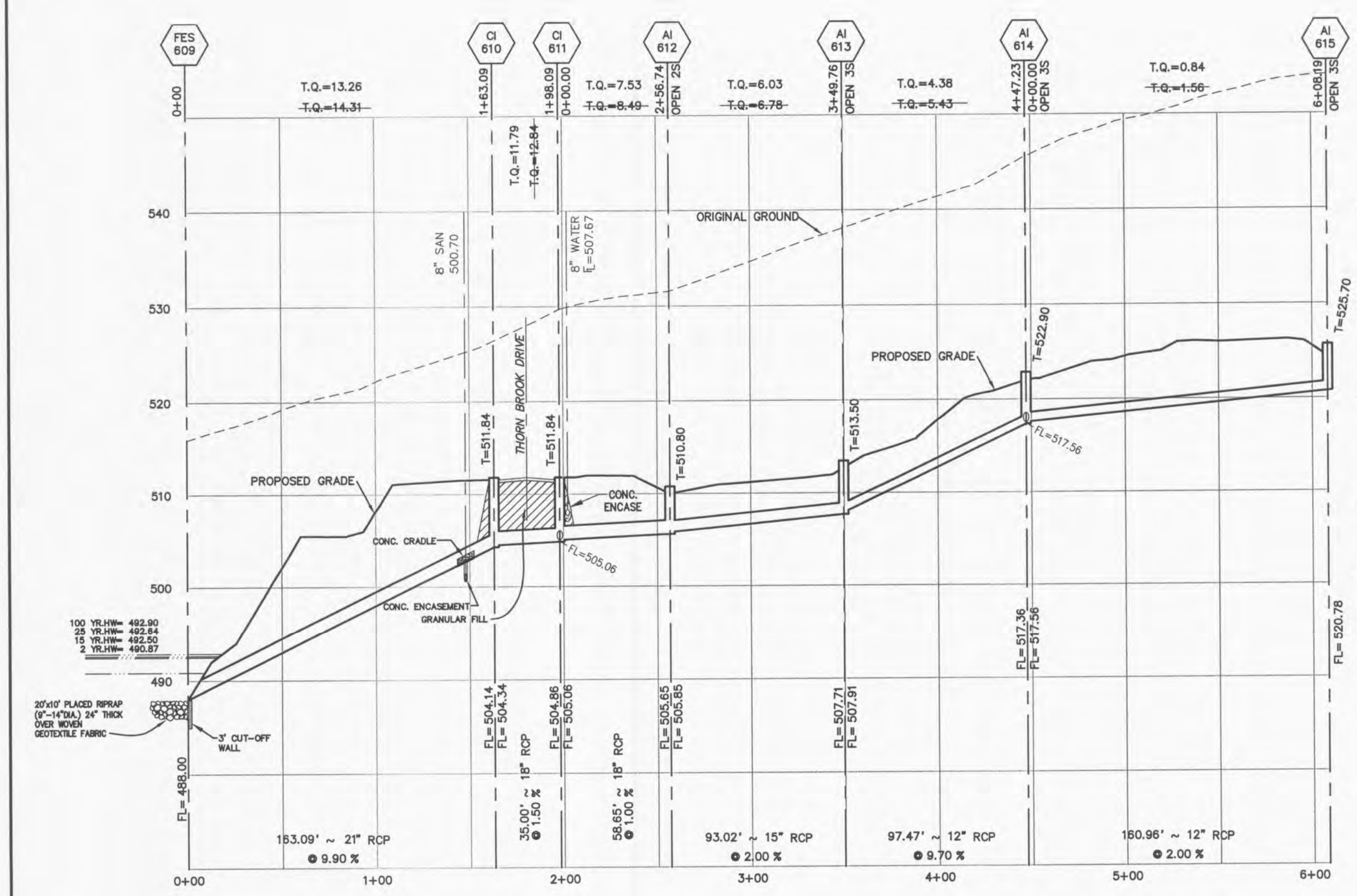
S MID OUTFALL STRUCTURE OS-608

NOTE: ALL OUTFALL STRUCTURES ARE TO HAVE A GRATE TOP: #4 BARS @ 6" ON CENTERS TACKLED AND ATTACHED WITH ANCHOR BOLTS

THIS PIPE RUN APPROVED WITH LESS THAN 0.2' DROP IN STRUCTURES. CONTRACTOR AND/OR SUBCONTRACTOR TO TAKE NOTE!



THIS STRUCTURE APPROVED WITH LESS THAN 0.2' DROP. CONTRACTOR AND/OR SUBCONTRACTOR TO TAKE NOTE!



PROJECT TITLE  
**BROOKSIDE VILLAGE A**

**PICKETT, RAY & SILVER, INC.**  
CIVIL ENGINEERING, LAND SURVEYING,  
AND NATURAL RESOURCES SERVICES  
St. Peters  
222 Richmond Center Court  
St. Peters, MO 65076  
Phone (636) 397-1211 Fax (636) 397-1104  
www.prs3.com 1-800-708-3818

ENGINEER'S AUTHENTICATION  
THE RESPONSIBILITY FOR PROFESSIONAL ENGINEERING LIABILITY ON THIS PROJECT IS HEREBY LIMITED TO THE SET OF PLANS AUTHENTICATED BY THE SEAL, SIGNATURE, AND DATE HEREINER ATTACHED. RESPONSIBILITY IS DISCLAIMED FOR ALL OTHER ENGINEERING PLANS INVOLVED IN THIS PROJECT AND SPECIFICALLY EXCLUDES REVISIONS AFTER THE DATE UNLESS REAUTHENTICATED.  
**PICKETT, RAY & SILVER, INC.**  
NO LICENSE NUMBER  
DOUGLAS S. TIEMANN  
NUMBER E-23345  
PROFESSIONAL ENGINEER  
DOUGLAS S. TIEMANN  
PROFESSIONAL ENGINEER LICENSE E-23345

Developer / Owner Information  
**Lombardo Homes of St. Louis, LLC**  
2299 Technology Drive, Suite 150  
O'Fallon, Missouri 63368  
CITY OF OFFALLON Storm Sewer Profiles

P+Z No. 2603.04  
City No.  
Page No. 20 of 40  
City of O'Fallon Standard Subdivision Notes and Details - June 2010